

MISSISSIPPI HISTORIC BRIDGE SURVEY

OCT 03 1988

1. Name of Bridge: Fairground Street Bridge

2. Location

Code 149

County Warren USGS Quadrangle Vicksburg West

Town/vicinity City of Vicksburg

UTM coordinates:

Zone 16 Easting 698560 Northing 3579640

Acreage less than one Owner City of Vicksburg

Verbal boundary description:

Includes the 20 by 175.5 ft. bridge that spans the ICG railroad yard on the Fairground Street crossing in the City of Vicksburg.

3. Description

Number of spans 2 Length overall 175.5 ft (53.5 m)

Span types:

(1) (E) Pratt through truss length 83 ft (25.3 m)

(2) (W) Pratt through truss length 92.2 ft (28.2m)

(3) _____ length _____

Truss span components:

Top chords 2 channel beams and 1 plate laced underneath

End posts Phoenix columns

Bottom chords rectilinear eye-bars

Hip verticals _____

Intermediate posts _____

Diagonals rectilinear eye-bars

Counters _____

Connections Pins

Piers Concrete piers on ends. Metal beam support middle.

Condition Unpainted. heavily rusted in places. Many bottom chord eye-bars have almost disintegrated from rust. Some have been replaced.

Date of construction 1895

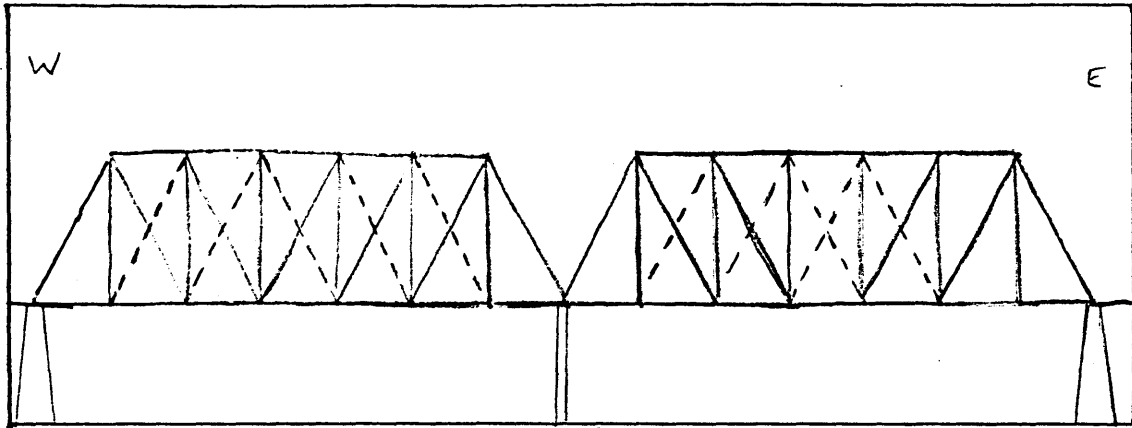
Builder Keystone Bridge Co., Pittsburg, Pennsylvania

Source Bridge plaques list builder. Date from Mr. Gordon Cotton, director, Vicksburg Old Courthouse Museum

4. Location of Legal Description

Courthouse, Office of the Chancery Clerk
Registry of Deeds, etc.: Warren County Courthouse
Street & Number: Cherry Street
City, Town: Vicksburg State: Mississippi

Profile Sketch



5. Significance

Level of significance:

Local ____; State x ; National ____

Statement of significance:

This bridge consists of two Pratt through truss spans, the most commonly used type of truss in Mississippi during the late 19th and early 20th centuries. In addition this is the oldest known surviving bridge in Mississippi and the only one with Phoenix columns.

6. Form prepared by:

Jack D. Elliott, Jr.
Historical Archaeologist
Division of Historic Preservation
Mississippi Department of Archives and History
P.O. Box 571
Jackson, Mississippi 39205