



- 1) Moose Creek Ranger Station
- 2) Idaho
- 3) James Heid
- 4) October, 1989
- 5) Nez Perce N.F. Supervisor's Office
- 6) Building #1 facing west



- 1) Moose Creek Ranger Station
- 2) Idaho
- 3) James Heid
- 4) October, 1989
- 5) Nez Perce N.F. Supervisor's Office
- 6) Building #1 facing east



- 1) Moose Creek Ranger Station
- 2) Idaho
- 3) James Heid
- 4) October, 1989
- 5) Nez Perce N.F. Supervisor's Office
- 6) Building # 2 facing west.



- 1) Moose Creek Ranger Station
- 2) Idaho
- 3) James Heid
- 4) October, 1989
- 5) Nez Perce N.F., Supervisor's Office
- 6) Building #3 facing east



- 1) Moose Creek Ranger Station
- 2) Idaho
- 3) James Heid
- 4) October, 1989
- 5) Nez Perce N.F. Supervisor's Office
- 6) Building #4 facing east



- 1) Moose Creek Ranger Station
- 2) Idaho
- 3) James Heid
- 4) October, 1989
- 5) Nez Perce N.F. Supervisor's Office
- 6) Building # 5 facing east



- 1) Moose Creek Ranger Station
- 2) Idaho
- 3) James Heid
- 4) October, 1989
- 5) Nez Perce N.F. Supervisor's Office
- 6) Building #7 facing east



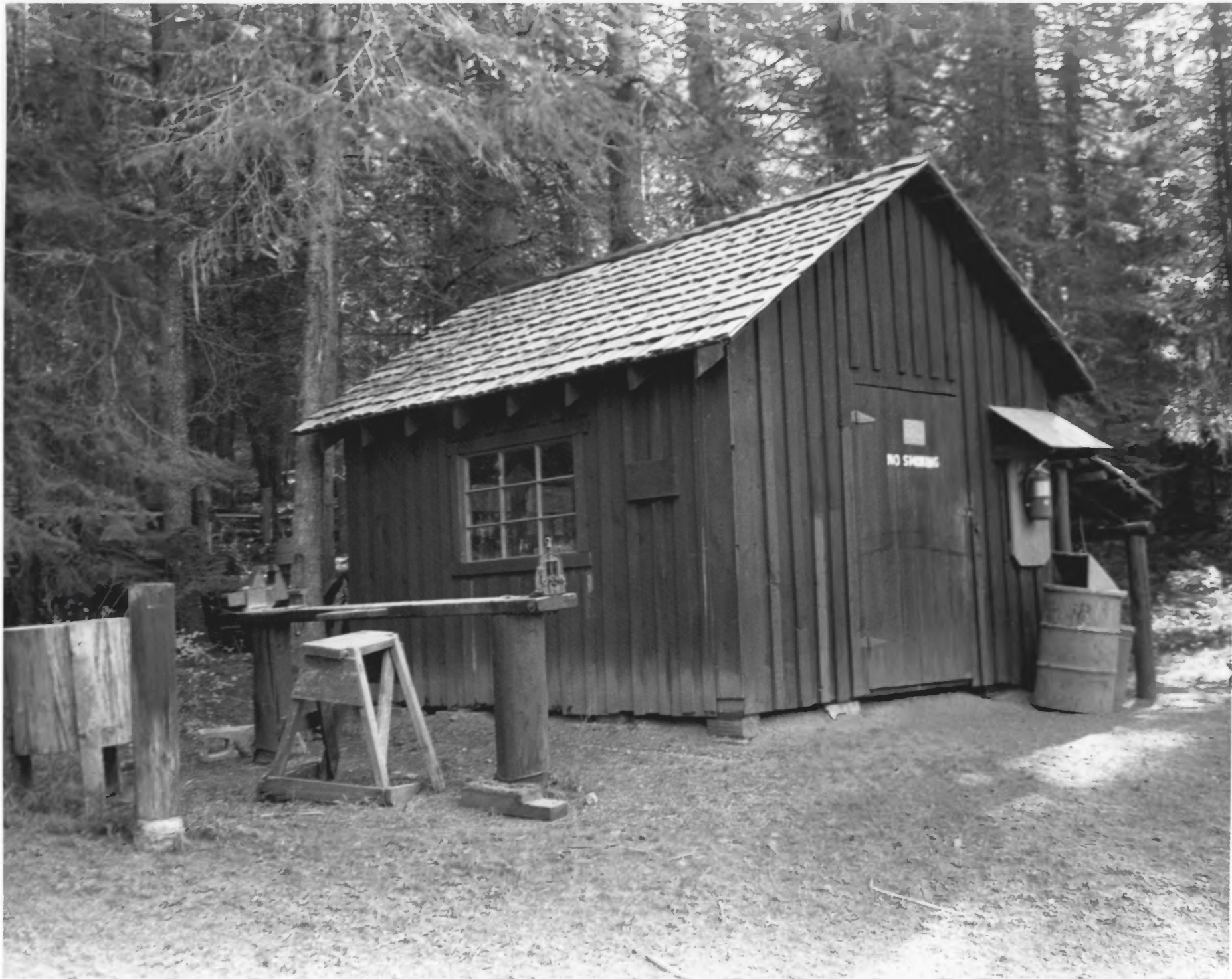
- 1) Moose Creek Ranger Station
- 2) Idaho
- 3) James Heid
- 4) October, 1989
- 5) Nez Perce N.F. Supervisor's Office
- 6) Building #8 facing southwest



- 1) Moose Creek Ranger Station
- 2) Idaho
- 3) James Heid
- 4) October, 1989
- 5) Nez Perce N.F. Supervisor's Office
- 6) Building #10 facing south



- 1) Moose Creek Ranger Station
- 2) Idaho
- 3) James Heid
- 4) October, 1989
- 5) Nez Perce N.F. Supervisor's Office
- 6) Building #6 facing northeast

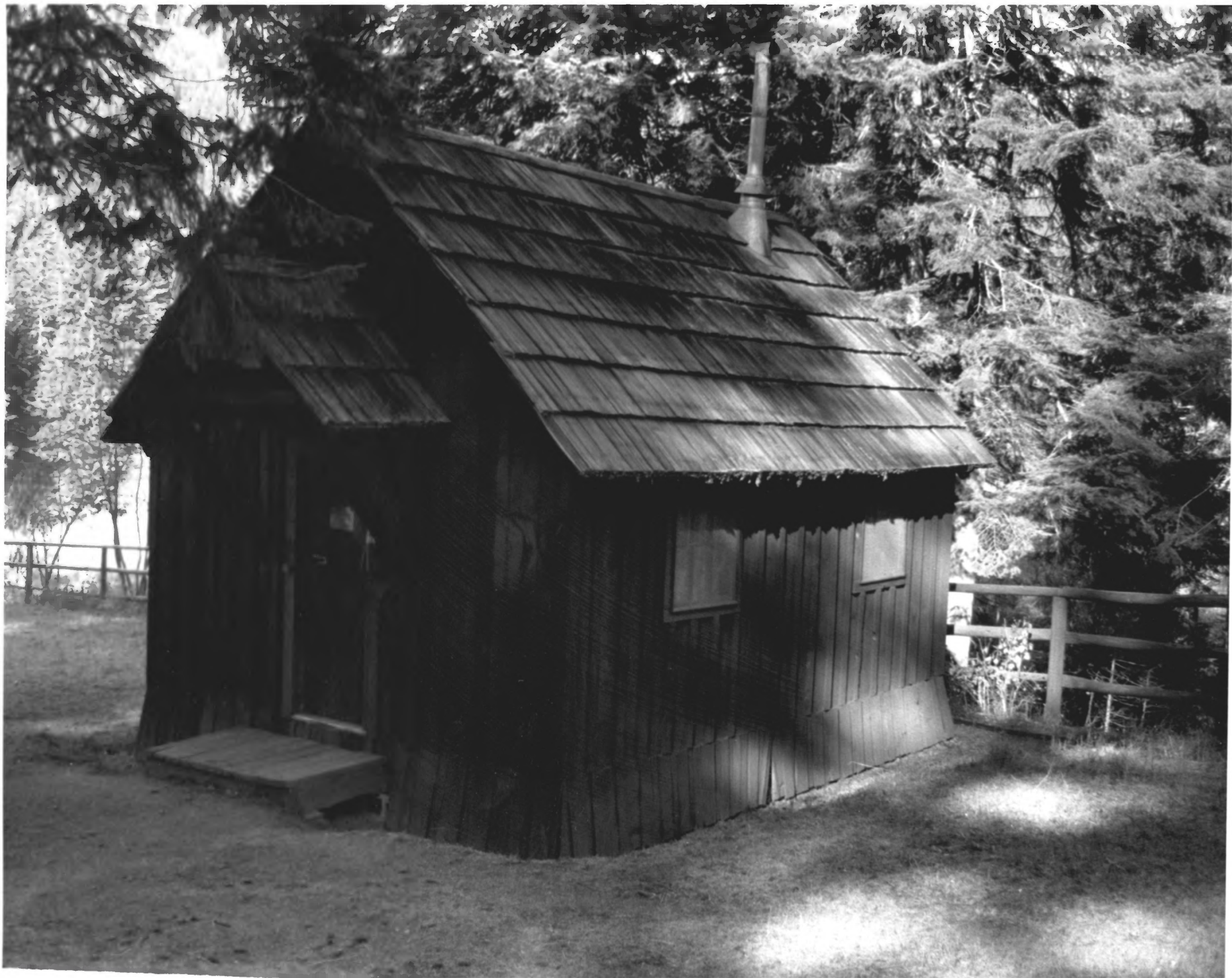


NO SMOKING

- 1) Moose Creek Ranger Station
- 2) Idaho
- 3) James Heid
- 4) October, 1989
- 5) Nez Perce N.F. Supervisor's Office
- 6) Building # 11 facing east



- 1) Moose Creek Ranger Station
- 2) Idaho
- 3) James Weid
- 4) October, 1989
- 5) Nez Perce N.F. Supervisor's Office
- 6) Building #9 facing east



- 1) Moose Creek Ranger Station
- 2) Idaho
- 3) James Heid
- 4) October, 1989
- 5) Nez Perce N.F. Supervisor's Office
- 6) Building #12 facing northwest



- 1) Moose Creek Ranger Station
- 2) Idaho
- 3) James Heid
- 4) October, 1989
- 5) Nez Perce N.F. Supervisor's Office
- 6) Building # 13 facing northeast



1) Moose Creek Ranger Station

2) Idaho

3) Unknown

4)

5) Nez Perce N.F. Supervisor's Office

6) E. Cooley (L), R. Robinson (R-Back)
and Frank Davvy (R-Front)
preparing for first smokejump
from Moose Creek Ranger Station
in 1940.



- 1) Moose Creek Ranger Station
- 2) Idaho
- 3) Leroy Lewis
- 4) 1930
- 5) Nez Perce N.F. Supervisor's Office
- 6) Building # 14 facing south



- 1) Moose Creek Ranger Station
- 2) Idaho
- 3) Unknown
- 4) Circa 1920's
- 5) Nez Perce N.F. Supervisor's Office
- 6) Building #1 facing west