

440

United States Department of the Interior National Park Service

APR 24 1989

National Register of Historic Places Registration Form

NATIONAL REGISTER

This form is for use in nominating or requesting determinations of eligibility for individual properties or districts. See instructions in Guidelines for Completing National Register Forms (National Register Bulletin 16). Complete each item by marking "x" in the appropriate box or by entering the requested information. If an item does not apply to the property being documented, enter "N/A" for "not applicable." For functions, styles, materials, and areas of significance, enter only the categories and subcategories listed in the instructions. For additional space use continuation sheets (Form 10-900a). Type all entries.

1. Name of Property

historic name Whitney & Company other names/site number

2. Location

street & number 142 Water Street city, town Leominster state MA code MA county Worcester code 027 zip code 01453

3. Classification

Table with 3 columns: Ownership of Property, Category of Property, and Number of Resources within Property. Includes checkboxes for private/public ownership and building/site/structure/object categories.

Name of related multiple property listing: n/a

Number of contributing resources previously listed in the National Register 0

4. State/Federal Agency Certification

As the designated authority under the National Historic Preservation Act of 1966, as amended, I hereby certify that this nomination request for determination of eligibility meets the documentation standards for registering properties in the National Register of Historic Places and meets the procedural and professional requirements set forth in 36 CFR Part 60. In my opinion, the property meets does not meet the National Register criteria. See continuation sheet. Executive Director, Massachusetts Historical Commission. Signature of certifying official: [Signature] Date: 3/30/89

In my opinion, the property meets does not meet the National Register criteria. See continuation sheet. Signature of commenting or other official: Date: State or Federal agency and bureau:

5. National Park Service Certification

I, hereby, certify that this property is: [X] entered in the National Register. [] See continuation sheet. [] determined eligible for the National Register. [] See continuation sheet. [] determined not eligible for the National Register. [] removed from the National Register. [] other, (explain:). Signature of the Keeper: [Signature] Date of Action: 6-7-89

6. Function or Use

Historic Functions (enter categories from instructions)
 Industry/Processing/Extraction

Current Functions (enter categories from instructions)
 Vacant/Not in Use

7. Description

Architectural Classification
 (enter categories from instructions)

Materials (enter categories from instructions)

Late Victorian/Queen Anne

foundation Brick

walls Asphalt

Steel (sheet metal)

roof Tar & gravel

other _____

Describe present and historic physical appearance.

The Whitney & Company, Leominster, is a large, three- and four-story frame factory building with a central flat-roofed tower projection midway along its facade. A variety of sheet metal and concrete block additions have been added at the rear of the site, but the three major original elevations remain unaffected. Other minor alterations include the application of later asphalt shingle siding and window infill and the removal of the center tower's top story and castellated parapet.

The property is an industrial plant, which historically served as a paper box manufacturing facility. The main rectangular block is built into a relatively steep hillside with the facade shifting from 4 to 2 1/2 stories as it extends eastward along Water Street. To the rear of the main block, a number of original and later ell's of varying heights and masses extend northward into the hillside and along the Whitney Street edge of the site.

The property defines the eastern edge of the city's central manufacturing district. It is adjacent to the sprawling F. A. Whitney Carriage Co. (NR 198-) to its west across Whitney Street, and there are several other small frame factories further north and south on Whitney Street. However, the area immediately to the east along Water Street is the beginning of the large East Side residential neighborhood, a late-nineteenth/early twentieth century working class community that evolved to house the city's many mill workers.

The main factory facade fronting on Water Street dates in part from 1893 and was fully built by 1900. It is along rectangular mass, 4 stories at its western end and gradually decreasing to 2 1/2 stories at the eastern end. The facade is 238 feet long while its seven-bay west elevation extends 82 feet along Whitney Street. The building's design features a strong wooden cornice, which projects slightly from the building plane and is capped by a flat roof.

The facade is divided into 26 bays, with a projecting two-bay unit slightly west of center. This unit extends a full story above the facade as a tower element and is now capped by a matching wood cornice and flat roof. The windows that remain are 6/6 double-hung sash in plain wood frames. Many of the openings are presently boarded and most of the sash have been removed. There is a later door in the bay east of the tower, a two-bay recessed loading dock three bays west of the tower unit, and an original hooded doorway in the second bay from Whitney Street. Its gabled hood survives, although the original carved brackets have been replaced by simpler wood bracing.

See continuation sheet

United States Department of the Interior
National Park ServiceNational Register of Historic Places
Continuation SheetWhitney & Company
Leominster, MassachusettsSection number 7 Page 1

The east elevation rises up Oak Avenue and is mainly of two-story height. At the Water Street end, the five-bay, two-story end of the main factory repeats the cornice design and window pattern of the facade. Abutting this mass is a two-bay unit of three-story height, to which a flat-roofed open shed has been added at the first level. To the north, a three-bay, two-story wing projects out to the street line beyond the open shed. Its first-story facade has been rebuilt in concrete block with a large loading door in its south half. At the second story, an original wood loading door is flanked by 6/6 windows. Both this element and the adjoining three-story block are capped by an overhanging wood cornice with simple wood brackets.

The factory's west elevation along Whitney Street is seven bays deep and a full four stories in height. There is a large single-light wood door with paneled base in the third bay from the south corner. All other openings have, or had wood 6/6 sash, but the majority of openings are infilled with 1960s fiberglass panels, which replaced the original sash.

A two-story, flat-roofed ell of two-bay depth is attached to the north elevation of this building. Further east along the rear elevation is a full-height frame wing, which extends six bays to the north. This later mass features regularly-spaced 8/8 wood sash and a simple wooden cornice. It too is sheathed in asphalt shingles. Based on their construction, materials, scale, and review of early photos, these two additions date from ca. 1915 and ca. 1910 respectively.

A one-story, storage/shipping addition, also of early twentieth century date (ca. 1915), stands beyond the main factory to the north of its rear wing. It has four pairs of multi-light wood sash along its west elevation but is almost entirely concealed from view by the later concrete addition to its west along Whitney Street.

Several other later warehouse additions of lesser significance occupy the balance of the Whitney and Company site. Facing Oak Avenue and set back 100 feet from the main factory is a flat-roofed, two-story metal warehouse addition built of corrugated metal with an assortment of 12/12 wood sash and corrugated fiberglass infill at most of the former window openings. From the opposite (west) side, the building has a similar metal elevation but of four-story height and with only three bays of infilled openings. A date of ca. 1923 is suggested by the heavy timber interior construction, comparable exterior siding to the former 1929 storage warehouse at the nearby F. A. Whitney Carriage Co. complex, and an undocumented 1923 date on the state survey form. The early 1920s were a period of steady expansion for the local industries to which the company supplied boxes, likewise supporting this construction date.

**United States Department of the Interior
National Park Service**

**National Register of Historic Places
Continuation Sheet**

Whitney & Company
Leominster, Massachusetts

Section number 7 Page 2

Another four-story metal warehouse (ca. 1923), also of nondescript character, is connected to the first metal warehouse by a narrow metal-enclosed passage of slightly low height.

A long, one-story, painted concrete block wing extends northward along Whitney Street, set back from the street edge by a ten-foot berm. It has a flat roof, a loading door in the angled southwest corner bay, and a row of small horizontal metal windows high up along its west elevation.

Between the two north wings of the original factory is a tall brick chimney, ca. 1915, which rises above the four-story factory. It is of square form and has patterned brick panels at the top and a simple steeped brick cornice.

The factory interior features wood floors and plain columns and is a modest industrial design.

The property has been poorly maintained and is in a neglected state at present. It is a present being rehabilitated according to the standards of the Secretary of the Interior. The asphalt shingle exterior and inappropriately infilled windows would be removed and the historic design of the main factory restored under the new owner's proposed renovation plan. The corrugated metal warehouse additions and the concrete block wing would be removed. These changes would accentuate the form and design of the original factory complex and its relationship to the sloping site.

**United States Department of the Interior
National Park Service**

National Register of Historic Places Continuation Sheet

Whitney & Company
Leominster, Massachusetts

Section number 7 Page 3

Archaeological Description

While no prehistoric sites are currently recorded on the property, sites may be present. One known prehistoric site is recorded in the general area (within one mile). This factor plus the locational characteristics of the property, high ground overlooking Monoosnoc Brook, indicates a moderate potential for locating prehistoric sites. In general, however, there is little potential for locating significant archaeological survivals, either prehistoric or historic because of extensive industrial and existing structures within the parcel.

8. Statement of Significance

Certifying official has considered the significance of this property in relation to other properties:

 nationally statewide locallyApplicable National Register Criteria A B C DCriteria Considerations (Exceptions) A B C D E F G

Areas of Significance (enter categories from instructions)

IndustryArchitecture

Period of Significance

1839-1930

Significant Dates

18931910-1915

Cultural Affiliation

n/a

Significant Person

n/a

Architect/Builder

unknown

State significance of property, and justify criteria, criteria considerations, and areas and periods of significance noted above.

The Whitney & Company Factory, Leominster, retains its integrity of location design, setting, materials, workmanship, feeling, and association and, fulfills Criteria A and C of the National Register on the local level. The property is one of the few substantial wood-frame factory buildings remaining in Leominster. Despite its asphalt siding, the building's overall design integrity as a late-nineteenth century industrial plant is largely intact. The building has important associations with Leominster's industrial development in the late nineteenth and early twentieth centuries, having been the home of one of the city's two major folding box manufacturers. The boxes produced by the company were used largely by comb and shirt manufacturers to package their products for national distribution, thus providing a vital link in the success of the local industrial base.

The property's historic context is defined by the strong industrial economy that developed in Leominster from the post-Civil War era until the late 1920s. The vitality of the economic base derived from the multitude of small industries in the town, so that downturns in one industry were frequently offset by technological advances or new market demands in another. Key industrial products included baby carriages, piano cases, horn (and later plastic) combs and accessories (jewelry, buttons, hair ornaments), and men's shirts and collars. Of these major industries, the horn and shirt industries were particularly in demand of packaging materials for distributing their products.

Leominster's paper box industry actually began in the 1850s, when Charles Carter, a clothier, began making paper boxes in a small shop. This business was sold to George L. Chase in 1880 but after moving and expanding several times, closed in 1895. Another boxmaker, John Davis, began making boxes in his home in 1854-1855, employing young girls and moving the shop several times before closing in 1870. In 1857, Mrs. E. F. Dodge began a similar home business. She was joined by her son, Wooster F. Dodge, and the business became E. F. Dodge and Co. This firm was the first to become a substantial manufacturing facility and continued well into the twentieth century as one of the city's two major box producers.

 See continuation sheet

9. Major Bibliographical References

Burdett, Edna M., Industries of Leominster, September 22, 1910, Papers read at Meetings of the Leominster Historical Society, 1933.

City Directories, Leominster, MA 1886-1961, on file in Leominster Public Library, Historical Collections.

Emerson, William A., Leominster, Historical & Picturesque, Lithotype Publishing Co., Gardner, MA 1888.

Nichols, Kate, Leominster of Today Illustrated, Leominster, 1900, p. 229.

See continuation sheet

Previous documentation on file (NPS):

- preliminary determination of individual listing (36 CFR 67) has been requested
- previously listed in the National Register
- previously determined eligible by the National Register
- designated a National Historic Landmark
- recorded by Historic American Buildings Survey # _____
- recorded by Historic American Engineering Record # _____

Primary location of additional data:

- State historic preservation office
- Other State agency
- Federal agency
- Local government
- University
- Other

Specify repository: _____

10. Geographical Data

Acreeage of property less than 1 acre

UTM References

A

1	9	2	7	3	8	2	5	4	7	1	1	9	0	0
Zone	Easting		Northing											

C

--	--	--	--	--	--	--	--	--	--	--	--	--	--	--

B

Zone	Easting		Northing											

D

--	--	--	--	--	--	--	--	--	--	--	--	--	--	--

See continuation sheet

Verbal Boundary Description

See continuation sheet

Boundary Justification

See continuation sheet

11. Form Prepared By

name/title Margo B. Webber, Pres. Consult. w/ Betsy Friedberg, Nat. Reg. Director, MHC

organization Massachusetts Historical Commission date February, 1989

street & number 80 Boylston Street, Suite 310 telephone 617 727-8470

city or town Boston, state MA zip code 02116

United States Department of the Interior
National Park ServiceNational Register of Historic Places
Continuation SheetWhitney & Company
Leominster, MassachusettsSection number 8 Page 1

Within this context, Fred Abbott Whitney and his brother Walter F. Whitney, nephews of Francis A. Whitney who was so instrumental in the success of Leominster's baby carriage and shirt industries, founded another box manufacturing company in 1886. Their shop, Whitney & Company, was first located near the Water Street railroad crossing and then in the old Enterprise Building. The business prospered and in 1893, the large factory at Whitney and Water Streets was constructed.

By 1910, a large rear wing had been added and two other related paper businesses had been acquired, the Handifold Toilet Paper Co. and the National Fibreboard Co. plant on Mill Street. The first two rear additions (ca. 1910-1915), were of matching frame construction and provided additional manufacturing space to meet new demands. In addition, a separate boiler plant and chimney and several large open storage sheds stood behind the factory. As of 1906, the city's two box makers, E. F. Dodge & Co. and Whitney & Company, employed upwards of 200 people.

In its early years, the company manufactured boxes of all types, including fancy hand-painted and satin-lined boxes as well as folding cartons. The company acquired special machinery, which it boasted could make every style and description of folding box. As the industry grew, it concentrated more and more on folding cartons. This trend reflected similar trends in Leominster's comb and shirt industries: emphasis on high volume production for national distribution rather than specialty good items and localized markets.

Whitney & Company continued in operation at this site until 1961, expanding in the 1920s with large metal-sided warehouse additions that replaced the earlier open-sided warehouse additions that in turn replaced the original open-sided storage sheds. The two Whitney brothers remained in the business throughout its growth years. F. W. Whitney served as president until the late 1930s and was succeeded by F. A. Whitney as president until he too retired in 1944.

The property was one of the city's two major packaging manufacturers during its period of greatest industrialization between 1880 and 1925. The earlier home-based box makers had all closed by the turn of the century, in light of the fact that packaging had become a mechanized industry requiring substantial factory space and machinery to produce in the high volumes required by local industry.

Architecturally, the building's original appearance was a handsome period example of vernacular industrial design. The early frame expansion to the north was also reflective of turn-of-the-century frame factory design. Over the years, the removal of the tower's top story and crenellated parapet has slightly lessened its visual impact. The exact date of this change could not

**United States Department of the Interior
National Park Service**

**National Register of Historic Places
Continuation Sheet**

Whitney & Company
Leominster, Massachusetts

Section number 8 Page 2

be documented, but it most likely coincides with the ca. 1940 asbestos siding treatment of the exterior. The more recent siding treatment and rear additions clearly detract from the original character. Despite these changes, however, and with historic rehabilitation being proposed, the factory is a fine example of the city's last phase of frame factory construction.

Like most of Leominster's industries, the packaging industry was comprised of several mid-sized shops. This was also true of the comb industry, where a great deal of capital was not required in order to set up a business and so there were many small enterprises in the early years. This pattern is reflected today in the stock of remaining industrial structures in the city. Several small frame factories survive, but these have mostly been inappropriately updated and do not have the imposing scale and size of the Whitney & Company complex. Two earlier frame factories at the nearby F. A. Whitney Carriage Co. have recently been renovated but these date from the 1860s and 1870s and are quite different in their Second Empire designs. Most of the other mid-size frame factories, such as the Gane Shirt Co., were demolished or replaced by larger brick plants as their occupants expanded in the early twentieth century years. Whitney & Company dates from the last period of frame factory construction and is one of the last surviving examples of its type.

United States Department of the Interior
National Park Service

National Register of Historic Places
Continuation Sheet

Whitney & Company
Leominster, Massachusetts

Section number 10 Page 1

10. Verbal Boundary Description

Beginning at the northeast corner of Water and Whitney Streets, the boundary runs east along the north side of Water Street for a distance of 238.5'. It then turns northward along the west side of Oak Avenue for a distance of 82.5', returns westward and runs 100.', and then follows the east property line of the parcel for a distance of 72.5' northward, 8.' westward, 85.' northward, 7.' westward and 29.84 northward to the northeast corner of the parcel. From here the boundary proceeds westward for 113.53' to the east side of Whitney Street, then turns southward along the east side of Whitney Street to the point of origin.

Boundary Justification

The nomination includes the entire parcel formerly owned and developed by Whitney & Co. box manufacturers and which still remains under single ownership. This boundary includes the original factory, its historic addition to the rear, the brick chimney from its power plant, and three later rear additions. These last elements were all included because they remain under single ownership, even though they are of lesser significance. The boundary excludes unrelated industrial structures to the north as well as unrelated residential properties along Oak Avenue to the east. Water Street and Whitney Street form logical boundaries to the south and west, denoting the prominent corner location originally selected for its high visibility and proximity to other Water Street factories.

United States Department of the Interior
National Park Service

National Register of Historic Places
Continuation Sheet

Section number _____ Page _____

SUPPLEMENTARY LISTING RECORD

NRIS Reference Number: 89000440

Date Listed: 06/07/89

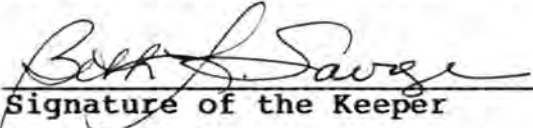
Whitney & Company
Property Name

Worcester
County

MA
State

N/A
Multiple Name

This property is listed in the National Register of Historic Places in accordance with the attached nomination documentation subject to the following exceptions, exclusions, or amendments, notwithstanding the National Park Service certification included in the nomination documentation.

for 
Signature of the Keeper

6-7-89
Date of Action

=====

Amended Items in Nomination:

Period and Level of Significance:

1839 was inadvertantly entered as the beginning date for the period of significance, 1893 was intended as indicated by the text and the specific dates.

Sufficient context is not provided to justify the property's significance at a national level, local is applicable.

This information was confirmed with Ann Tait, Acting National Register Director, MASHPO, by telephone.

DISTRIBUTION:

- National Register property file
- Nominating Authority (without nomination attachment)

UNITED STATES DEPARTMENT OF THE INTERIOR
NATIONAL PARK SERVICE

NATIONAL REGISTER OF HISTORIC PLACES
EVALUATION/RETURN SHEET

REQUESTED ACTION: NOMINATION

PROPERTY NAME: Whitney & Company

MULTIPLE NAME:

STATE & COUNTY: MASSACHUSETTS, Worcester

DATE RECEIVED: 4/24/89 DATE OF PENDING LIST: 5/09/89
DATE OF 16TH DAY: 5/25/89 DATE OF 45TH DAY: 6/08/89
DATE OF WEEKLY LIST:

REFERENCE NUMBER: 89000440

NOMINATOR: STATE

REASONS FOR REVIEW:

APPEAL: N DATA PROBLEM: N LANDSCAPE: N LESS THAN 50 YEARS: N
OTHER: N PDIL: N PERIOD: N PROGRAM UNAPPROVED: N
REQUEST: N SAMPLE: N SLR DRAFT: N NATIONAL: Y

COMMENT WAIVER: N

ACCEPT RETURN REJECT 6/7/89 DATE

ABSTRACT/SUMMARY COMMENTS:

Architecturally and historically important industrial building.

RECOM./CRITERIA Accept A+C
REVIEWER Javage
DISCIPLINE Architectural History
DATE 6/7/89

DOCUMENTATION see attached comments Y/N see attached SLR (Y/N)

CLASSIFICATION

count resource type

STATE/FEDERAL AGENCY CERTIFICATION

FUNCTION

historic current

DESCRIPTION

architectural classification
 materials
 descriptive text

SIGNIFICANCE

Period Areas of Significance--Check and justify below

Specific dates Builder/Architect
Statement of Significance (in one paragraph)

summary paragraph
 completeness
 clarity
 applicable criteria
 justification of areas checked
 relating significance to the resource
 context
 relationship of integrity to significance
 justification of exception
 other

BIBLIOGRAPHY

GEOGRAPHICAL DATA

acreage verbal boundary description
 UTM's boundary justification

ACCOMPANYING DOCUMENTATION/PRESENTATION

sketch maps USGS maps photographs presentation

OTHER COMMENTS

Questions concerning this nomination may be directed to

_____ Phone _____

Signed _____ Date _____



Whitney & Company

Leominster, MA

Photo by : Margo B. Webber

October, 1987

Req. at : 136 Ridge Ave, Newton, MA 02159

View looking nw towards Water St. facade of main factory (1)

Photo 1 of 5



For LEASE 534-6249

WHITNEY
CARLAGE
→

HOUSE
FOR LEASE
534-6249

W. CARLAGE

Whitney & Company

Leominster, MA

Photo by: Margo B. Webber

October, 1987

Neg. at: 136 Ridge Ave., Newton, MA 02159

View looking east towards west and south elevations of main factory (1)

Photo 2 of 5

Missing Core Documentation

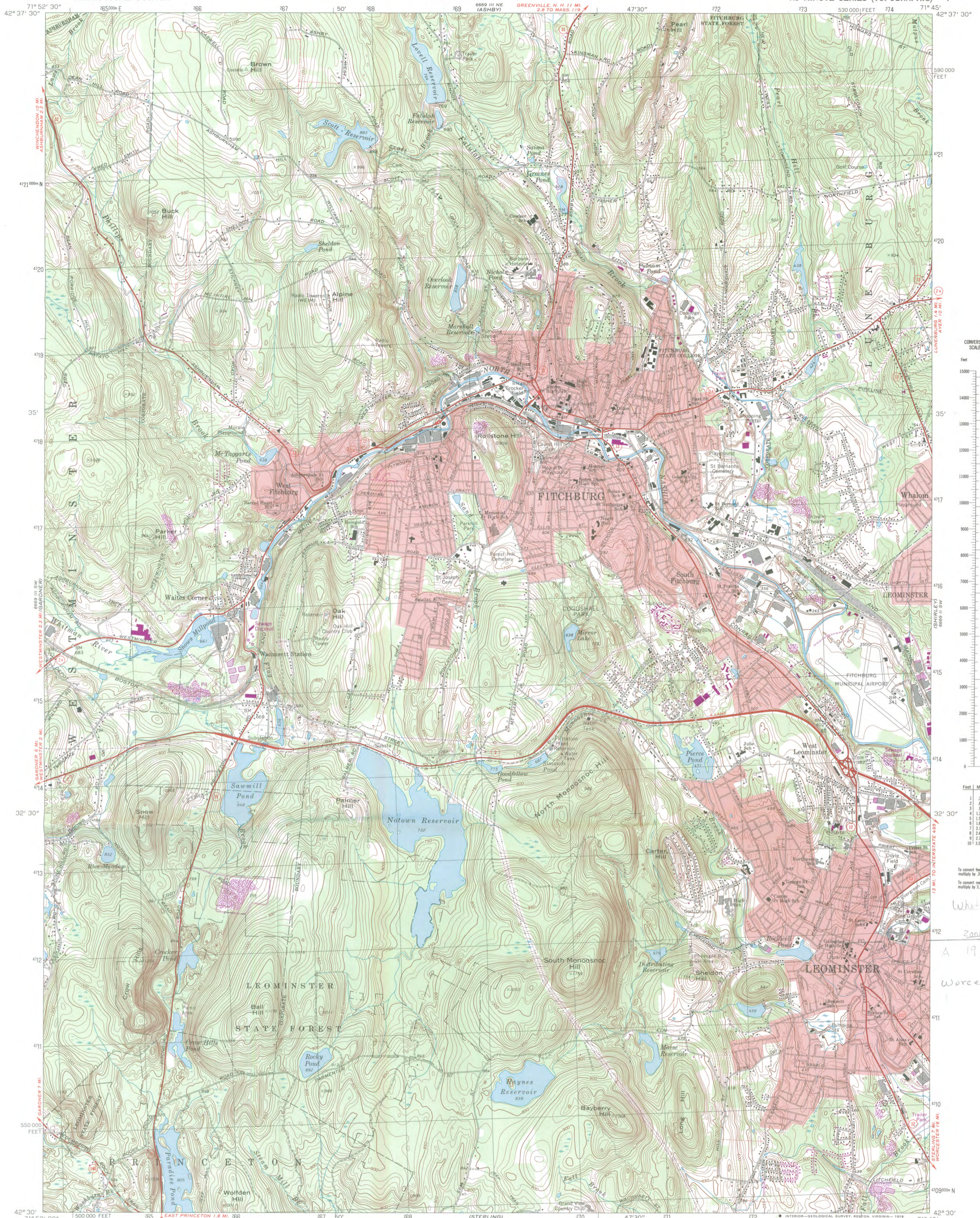
Property Name	County, State	Reference Number
Whitney & Company	Worcester County, Massachusetts	89000440

The following Core Documentation is missing from this entry:

Nomination Form

Photographs (missing #3-5)

USGS Map

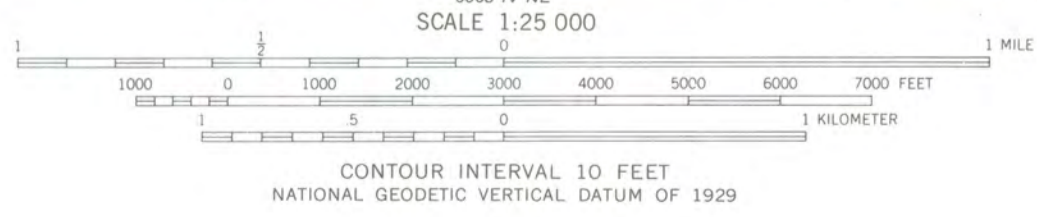
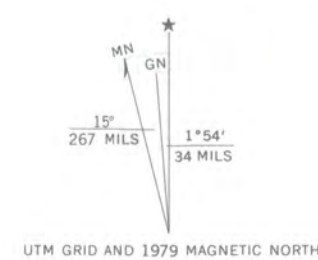


Feet	Meters
1	3048
2	6096
3	9144
4	12192
5	15240
6	18288
7	21336
8	24384
9	27432
10	30480

To convert feet to meters multiply by 0.3048
To convert meters to feet multiply by 3.2808

*Leominster
Whitney & Company
Zone Factory Planning
A 19/12/3825/471.000
Worcester County, MA*

Mapped, edited, and published by the Geological Survey
Control by USGS, USC&GS, and Massachusetts Geodetic Survey
Planimetry by photogrammetric methods from aerial photographs
taken 1948. Topography by plane-table surveys 1943 and 1944
Revised from aerial photographs taken 1968. Field checked 1969
Polyconic projection. 1927 North American datum
10,000-foot grid based on Massachusetts coordinate system,
mainland zone
1000-meter Universal Transverse Mercator grid,
zone 19
Fine red dashed lines indicate selected fence and field lines where
generally visible on aerial photographs. This information is unchecked
Red tint indicates areas in which only landmark buildings are shown
There may be private inholdings within the boundaries of
the National or State reservations shown on this map



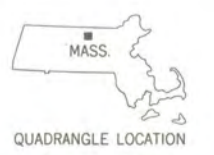
THIS MAP COMPLIES WITH NATIONAL MAP ACCURACY STANDARDS
FOR SALE BY U.S. GEOLOGICAL SURVEY, RESTON, VIRGINIA 22092
A FOLDER DESCRIBING TOPOGRAPHIC MAPS AND SYMBOLS IS AVAILABLE ON REQUEST

Revisions shown in purple compiled in cooperation with the State of
Massachusetts agencies from aerial photographs taken 1975 and other
source data. This information not field checked. Map edited 1979

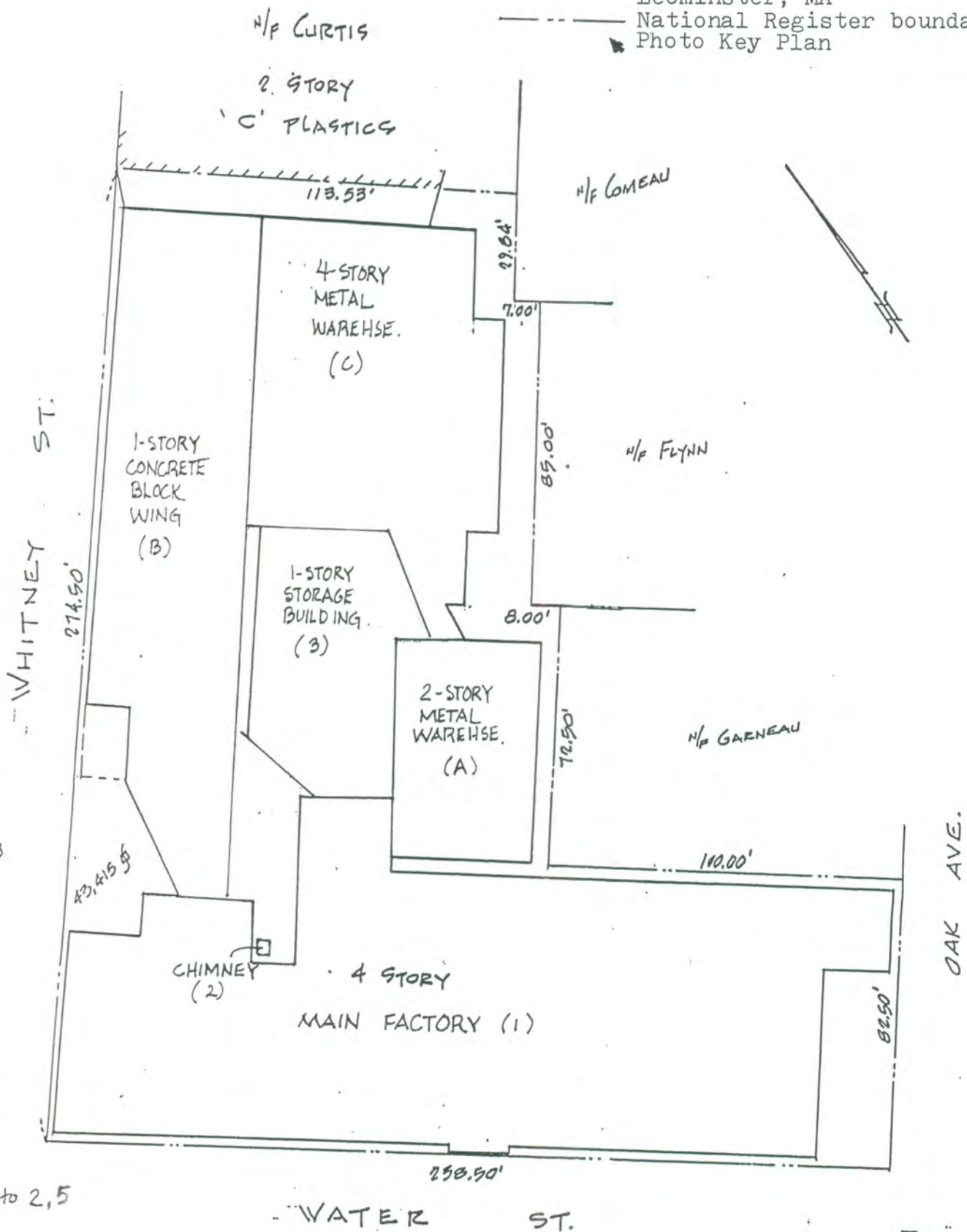
ROAD CLASSIFICATION

Primary highway, all weather, hard surface	Light-duty road, all weather, improved surface
Secondary highway, all weather, hard surface	Unimproved road, fair or dry weather

○ State Route



FITCHBURG, MASS.
N4230—W7145/7.5
1969
PHOTOREVISED 1979
AMS 6669 III SE—SERIES V814



BUYER: **ROBERT L. BOLIO & RICHARD A. HARTMAN**

MORTGAGE INSPECTION PLAN

LOCATED IN
LEOMINSTER
 MASSACHUSETTS

TO THE ... AND ITS INSURERS
 I HEREBY CERTIFY THAT I HAVE EXAMINED THE PREMISES AND ALL EASEMENTS,
 ENCROACHMENTS AND BUILDINGS ARE LOCATED ON THE GROUND AS SHOWN.
 I FURTHER CERTIFY THAT THE BUILDINGS SHOWN DO CONFORM TO THE
 ZONING LAWS AND AMENDMENTS, L.C. (FRONT, SIDE & REAR YARD SET BACK ONLY) OF **LEOMINSTER**
 WHEN CONSTRUCTED. I FURTHER CERTIFY THAT THIS PROPERTY IS **NOT**
 LOCATED IN THE ESTABLISHED FLOOD HAZARD AREA.
NOTE: THIS CERTIFICATION IS BASED ON THE LOCATION OF SURVEY MARKERS OF OTHERS, AND
 DOES NOT REPRESENT A PROPERTY SURVEY.
 EXAMINATION OF THE RECORDS IS MADE ONLY SUBSEQUENT TO THE RECORDED DATE OF THE
 LATEST DEED AND DOES NOT INCLUDE VERIFYING THE ACCURACY OF THE DEED DESCRIPTION
 PREVIOUS TO ITS DATE OF RECORD.
 THIS COMPANY IS NOT RESPONSIBLE FOR ANY INCENTURES MADE SUBSEQUENT TO THE
 RECORDED DATE OF THE LATEST DEED OF RECORD.
 WHENEVER BUILDINGS ARE SHOWN LESS THAN ONE FOOT FROM THE PROPERTY LINE IT IS
 ADVISED THAT A MORE PRECISE SURVEY BE MADE TO VERIFY THESE MEASUREMENTS.
THIS CERTIFICATION TO BE USED FOR MORTGAGE PURPOSES ONLY

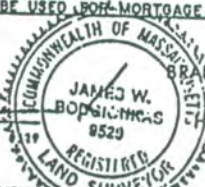
DEED
 BOOK **1199**
 PAGE **500**

PLAN
 NO. **15**
 BOOK **212**
 PAGE

CERT. NO. ...
 REC. 21... 1985
 SCALE: 1" = 40'

This plan reduced, for correct
 scaling see original on file in
 the office of
BRADFORD ENGINEERING CO.

James W. BOUGIOUKAS RLS #
BRADFORD ENGINEERING CO.
 P.O. BOX 1244
 Northoverhill, Mass 01831
 TEL. 373 2386





April 18, 1989

Carol Shull
National Register of Historic Places
Department of the Interior
National Park Service
P.O. Box 37127
Washington, DC 20013-7127

APR 24 1989

NATIONAL
REGISTER

Dear Ms. Shull:

Enclosed you will find the following nomination form:

Leominster, Cluett Peabody & Company, 123 First Street
Leominster, Whitney & Company, 142 Water Street
Norfolk, Norfolk Grange Hall, 28 Rockwood Road
Webster, Rock Castle School, Prospect Street, HPCA #11019MA
Webster, Thompson School, Prospect Street, HPCA #11018MA

All have been voted eligible by the State Review Board and have been signed by the State Historic Preservation Officer. Owners were notified of pending State Review Board consideration 30-75 days before the meeting and were afforded the opportunity to comment. Comments received to date are attached to the nomination form.

Sincerely,

Betsy Friedberg

Betsy Friedberg
National Register Director
Massachusetts Historical Commission

Enclosure:

BF/