

United States Department of the Interior
National Park ServiceNational Register of Historic Places
Registration FormRECEIVED
FEB 01 1992NATIONAL
REGISTER

This form is for use in nominating or requesting determinations of eligibility for individual properties or districts. See instructions in *Guidelines for Completing National Register Forms* (National Register Bulletin 16). Complete each item by marking "X" in the appropriate box or by entering the requested information. If an item does not apply to the property being documented, enter "N/A" for "not applicable." For functions, styles, materials, and areas of significance, enter only the categories and subcategories listed in the instructions. For additional space use continuation sheets (Form 10-900a). Type all entries.

1. Name of Property

historic name McKenzie House

other names/site number N/A

2. Location

street & number 4911 Hwy 161

☐ not for publication N/A

city, town Scott

☐ vicinity N/A

state Arkansas

code AR

county Pulaski

code AR 119

zip code 72142

3. Classification

Ownership of Property

- ☒ private
☐ public-local
☐ public-State
☐ public-Federal

Category of Property

- ☒ building(s)
☐ district
☐ site
☐ structure
☐ object

Number of Resources within Property

Contributing	Noncontributing
1	buildings
	sites
	structures
	objects
1	0
Total	

Name of related multiple property listing:

N/A

Number of contributing resources previously
listed in the National Register N/A

4. State/Federal Agency Certification

As the designated authority under the National Historic Preservation Act of 1966, as amended, I hereby certify that this
☒ nomination ☐ request for determination of eligibility meets the documentation standards for registering properties in the
National Register of Historic Places and meets the procedural and professional requirements set forth in 36 CFR Part 60.
In my opinion, the property ☒ meets ☐ does not meet the National Register criteria. ☐ See continuation sheet.

Signature of certifying official

Arkansas Historic Preservation Program

Date

7-24-91

State or Federal agency and bureau

In my opinion, the property ☐ meets ☐ does not meet the National Register criteria. ☐ See continuation sheet.

Signature of commenting or other official

Date

State or Federal agency and bureau

5. National Park Service Certification

I, hereby, certify that this property is:

- ☒ entered in the National Register.
☐ See continuation sheet.
☐ determined eligible for the National
Register. ☐ See continuation sheet.
☐ determined not eligible for the
National Register.
☐ removed from the National Register.
☐ other, (explain:)

Entered in the
National Register

Signature of the Keeper

3/5/92

Signature of the Keeper

Date of Action

6. Function or Use

Historic Functions (enter categories from instructions)

Domestic/Single Dwelling

Current Functions (enter categories from instructions)

Domestic/Single Dwelling

7. Description

Architectural Classification

(enter categories from instructions)

Other: Plain Traditional

Italianate

Materials (enter categories from instructions)

foundation Concrete

walls Wood/Weatherboarding

roof Asphalt

other

Describe present and historic physical appearance.

**United States Department of the Interior
National Park Service****National Register of Historic Places
Continuation Sheet**Section number 7 Page 1

Summary

The McKenzie House, originally constructed between the years 1868-75, is a simple one-story, wood frame, Plain Traditional style residence, yet which also features both Italianate details and an attention to symmetry and balance in its overall composition.

Elaboration

The McKenzie House, originally constructed between the years 1868-75, is a simple one-story, wood frame, Plain Traditional style residence with significant Italianate details. It is laid out in an "L" plan, with its eastern or front elevation being formed by the side wall of the gable roof front section that is dominated by the hipped, Italianate front porch that shelters the two symmetrically-placed front doors. The rear ell is covered with a "salt box" type gable roof, the northern wall of which is flush with the northern wall of the front section. Another porch roof shelters a single door in the southern wall of the ell. A small, square brick chimney formerly rose through the gable peak of the ell near its intersection with the rear of the front section's gable roof. The entire structure is covered with gable roofs, sheathed with weatherboard and supported upon a concrete block masonry foundation.

In addition to the afore-mentioned central front porch, the eastern or front elevation features beveled corner window bays on each of its outside corners. These two-over-two windows, like the pair of front doors, are ornamented with Italianate hood molds and surrounds; the windows also feature panelled bulkheads below. The northern elevation is composed of the central oculus in the gable peak above, the two-over-two window with its Italianate hood mold and trim placed directly below, and the ell wall to the west containing its smaller, rectangular central window and the larger two-over-two sash window. The southern elevation opposite contains the same window and oculus seen in the northern gable end, though the side wall of the ell is sheltered by another Italianate porch roof and punctuated by a single-leaf door to the east and a two-over-two sash window to the west, both of which are ornamented with the same Italianate hood molds and trim seen elsewhere. The western elevation consists of the door to the front section beneath the porch roof to the south and the gable end of the rear "saltbox" ell to the north. The door to the south is lighted with two arched panes in the upper half and is otherwise ornamented with Italianate trim around the entrance. The entrance near the center of the gable end is surrounded by the same trim, as are the two two-over-two windows that are placed to either side. A simple box cornice encloses the eaves on all elevations.

**United States Department of the Interior
National Park Service**

**National Register of Historic Places
Continuation Sheet**

Section number 7 Page 2

Significant exterior details are limited to the use of the Italianate porch supports and decorative wood trim that surrounds both the windows and the doors around the entire structure. The porch supports are of the bracketed type that are typical of the Italianate style, though they are unusual in spite of their relative simplicity of design by virtue of their employment of the impost block that directly supports the curving brackets. Even more elaborate, however, is the Italianate window and door trim. Each of the windows and doors on all of the principal elevations are surrounded with relatively deep moldings and surmounted with pedimented Italianate window crowns. The two single-leaf doors on the eastern elevation each contain a large, single pane of glass in the upper half of the door, and a pair of molded panels in the lower half. The two doors that lead into the house off the southern porch have the same pair of molded panels below, though they are each lighted with a pair of arched windows above. Most extraordinary of all, however, are the beveled window bays at each of the northeast and southeast corners of the house. The panelled bulkhead below and the two-over-two window above is surmounted with a molded triangular soffit that ornaments the "ceiling" of the recessed corner bay where it joins the corner of the structure as it rises to the eaves. Another triangular decorative hood mold is actually bent around the corner of the building to finish the bay. Jig-sawn wood trim placed in the two oculus openings on the northern and southern elevations complete the exterior decoration.

The McKenzie House interior is also relatively intact. All the original interior doors and baseboards remain. Other noteworthy original interior features include the built-in pantry in the kitchen.

An indoor bathroom was added in the 1950's and constitutes the only significant alteration to the entire structure. The roof decking was replaced out of necessity when the structure was moved to its current location in February of 1990. Otherwise the moving of the building required only the spot replacement of a relatively small amount of the exterior weatherboarding, and most of the original material was retained.

8. Statement of Significance

Certifying official has considered the significance of this property in relation to other properties:

☐ nationally ☐ statewide ☒ locally

Applicable National Register Criteria ☐ A ☐ B ☒ C ☐ D

Criteria Considerations (Exceptions) ☐ A ☒ B ☐ C ☐ D ☐ E ☐ F ☐ G

Areas of Significance (enter categories from instructions)
Architecture

Period of Significance
1868-75

Significant Dates
N/A

Cultural Affiliation
N/A

Significant Person
N/A

Architect/Builder
McKenzie, C.E.

State significance of property, and justify criteria, criteria considerations, and areas and periods of significance noted above.

☒ See continuation sheet

9. Major Bibliographical References

Goodspeed Biographical and Historical Memoirs of Eastern Arkansas, 1890, pp. 673-80.
Interview with John C. Edwards, April 18, 1990.

☐ See continuation sheet

Previous documentation on file (NPS):

- ☐ preliminary determination of individual listing (36 CFR 67)
has been requested
- ☐ previously listed in the National Register
- ☐ previously determined eligible by the National Register
- ☐ designated a National Historic Landmark
- ☐ recorded by Historic American Buildings
Survey # _____
- ☐ recorded by Historic American Engineering
Record # _____

Primary location of additional data:

- ☐ State historic preservation office
- ☐ Other State agency
- ☐ Federal agency
- ☐ Local government
- ☐ University
- ☐ Other

Specify repository: _____

10. Geographical Data

Acreage of property Less than one

UTM References

A 1 5 5 8 2 7 5 0 3 1 8 3 1 9 3 1 1 0
Zone Easting Northing

C _____

B _____
Zone Easting Northing

D _____

☐ See continuation sheet

Verbal Boundary Description Beginning at the northeast corner of the house (located 75 feet west of State Highway 161 and 400 feet south of the intersection of State Highway 161 with the main line of the St. Louis - Southwestern Railroad track), proceed westerly along the house's northern elevation to the northwest corner; thence proceed southerly along the house's western elevation to the southwest corner; thence proceed easterly along the house's southern elevation to the southeast corner; thence proceed northerly along the house's eastern elevation to the point of beginning.

☐ See continuation sheet

Boundary Justification

This boundary includes all the property historically associated with this resource.

☐ See continuation sheet

11. Form Prepared By

name/title Kenneth Story, Architectural Historian

organization Arkansas Historic Preservation Program date 7/23/91

street & number 225 E. Markham, Suite 200 telephone (501) 324-9346

city or town Little Rock state Arkansas zip code 72201

**United States Department of the Interior
National Park Service****National Register of Historic Places
Continuation Sheet**Section number 8 Page 1

Summary

The McKenzie House is significant under Criterion C with local significance as the only residential example of the Italianate style in the plantation community of Scott, Arkansas. Though it was moved in 1990 from Hazen, Arkansas, another agricultural community approximately forty miles to the east, it is an appropriate structure in the community of Scott, which was settled well before the onset of the Civil War and which retains a variety of historic architecture from several periods.

Elaboration

The McKenzie House was originally located in the eastern Arkansas community of Hazen, where it was erected c. 1868-1875. C.E. McKenzie was one of the largest livestock breeders in the state in the early twentieth century. It was occupied by members of the C.E. McKenzie family from the 1880's until 1975, after which it remained vacant for several years though still in the hands of the McKenzie estate.

It was moved from Hazen to the present site in 1990 when the present owner became aware that representatives of the McKenzie estate planned to demolish the building due to concerns over liability in the event of an accident on the site (the structure had been somewhat vandalized over time and posed a health hazard to anyone who wandered into it). The present owner entered into an agreement with the McKenzie estate to obtain ownership of the structure in return for moving it off the site. The house was moved a distance of approximately forty miles from its original site to the present site. The two sites are quite similar overall. Both are located within small towns and contain a large yard that surrounds the house and separates it from the thoroughfare that runs in front of it. As it was relocated, the house continues to face a principle thoroughfare and has thus retained its historic orientation.

The McKenzie House is locally significant under Criterion C as a remarkable example of a Plain Traditional House with clear Italianate stylistic influences. The curvilinear trim on the front porch and the decorative hood molds and trim that adorn the doors and windows throughout are signature elements of the Italianate style; less common, however, is the more three-dimensional use of the Italianate trim to ornament the beveled corner window bays. The pyramidal peak in the center of the hood molds seen throughout the design is uniquely adapted here to rise up to and decorate the bottom of the corner that projects out over the beveled window, thus maintaining both the consistency of style and the elegant, uncrowded proportions of a small front

**United States Department of the Interior
National Park Service**

**National Register of Historic Places
Continuation Sheet**

Section number 8 Page 2

facade while allowing more light into the interior. This same sensitivity to balance and proportion permeates the entire design on all elevations, resulting in an architecturally distinctive interpretation of what is a relatively common traditional house type and floor plan.

As noted above, it was moved because it was threatened with demolition on its original site, and it was moved to a site similar in overall character and surroundings to its original site. Thus, as is required of all moved buildings, it is considered eligible under Criterion C only.

UNITED STATES DEPARTMENT OF THE INTERIOR
NATIONAL PARK SERVICE

NATIONAL REGISTER OF HISTORIC PLACES
EVALUATION/RETURN SHEET

REQUESTED ACTION: NOMINATION

PROPERTY NAME: McKenzie House

MULTIPLE
NAME:

STATE & COUNTY: ARKANSAS, Pulaski

DATE RECEIVED: 2/04/92 DATE OF PENDING LIST: 2/18/92
DATE OF 16TH DAY: 3/05/92 DATE OF 45TH DAY: 3/20/92
DATE OF WEEKLY LIST:

REFERENCE NUMBER: 92000105

NOMINATOR: STATE

REASONS FOR REVIEW:

APPEAL: N DATA PROBLEM: N LANDSCAPE: N LESS THAN 50 YEARS: N
OTHER: N PDIL: N PERIOD: N PROGRAM UNAPPROVED: N
REQUEST: N SAMPLE: N SLR DRAFT: N NATIONAL: N

COMMENT WAIVER: N

☒ ACCEPT ☐ RETURN ☐ REJECT 3/5/92 DATE

Entered in the
National Register

ABSTRACT/SUMMARY COMMENTS:

RECOM./CRITERIA _____
REVIEWER _____
DISCIPLINE _____
DATE _____

DOCUMENTATION see attached comments Y/N see attached SLR Y/N

CLASSIFICATION

___count ___resource type

STATE/FEDERAL AGENCY CERTIFICATION

FUNCTION

___historic ___current

DESCRIPTION

___architectural classification
___materials
___descriptive text

SIGNIFICANCE

Period Areas of Significance--Check and justify below

Specific dates Builder/Architect
Statement of Significance (in one paragraph)

___summary paragraph
___completeness
___clarity
___applicable criteria
___justification of areas checked
___relating significance to the resource
___context
___relationship of integrity to significance
___justification of exception
___other

BIBLIOGRAPHY

GEOGRAPHICAL DATA

___acreage ___verbal boundary description
___UTMs ___boundary justification

ACCOMPANYING DOCUMENTATION/PRESENTATION

___sketch maps ___USGS maps ___photographs ___presentation

OTHER COMMENTS

Questions concerning this nomination may be directed to

Signed _____ Phone _____

Signed _____ Date _____



MCKENZIE HOUSE
SCOTT, ARKANSAS

Pulaski Co

P. ZOLLNER
AUGUST, 1991

NEGATIVE ON FILE AT AHPP
VIEW FROM THE EAST



Mc KENZIE HOUSE

SCOTT, ARKANSAS

Pulaski Co

P. ZOLLNER

AUGUST, 1991

NEGATIVE ON FILE AT AHPP

VIEW FROM THE SOUTH EAST



MCKENZIE HOUSE

SCOTT, ARKANSAS

Pulaski Co

P. ZOLLNER

AUGUST, 1991

NEGATIVE ON FILE AT NHPP

VIEW FROM THE SOUTH WEST



MC KENZIE HOUSE

SCOTT, ARKANSAS

P. ZOLLNER

AUGUST, 1991

NEGATIVE ON FILE AT AHPP

VIEW FROM THE NORTH

Pulaski



MCKENZIE HOUSE

SCOTT, ARKANSAS

P. ZOLLNER

AUGUST, 1991

NEGATIVE ON FILE AT AHPP

VIEW FROM THE SOUTH EAST

Pulaski Co



McKENZIE HOUSE

SCOTT, ARKANSAS

P. ZOLLNER

AUGUST, 1991

NEGATIVE ON FILE AT AHPA

VIEW FROM THE SOUTH

Pulaski Co



MC KENZIE HOUSE
SCOTT, ARKANSAS

Pulaski Co

P. ZOLLNER

AUGUST, 1991

NEGATIVE ON FILE AT AHPP

VIEW FROM THE WEST



Mc KENZIE HOUSE

SCOTT, ARKANSAS

P. ZOLLNER

AUGUST, 1991

NEGATIVE ON FILE AT NHPP

VIEW FROM THE SOUTH

Pulaski Co



McKENZIE HOUSE
SCOTT, ARKANSAS

Rulinski

P. ZOLLNER

AUGUST, 1991

NEGATIVE ON FILE AT AHPP

VIEW FROM THE SOUTH



McKENZIE HOUSE

SCOTT, ARKANSAS

P. ZOLLNER

AUGUST, 1991

Rulinski ②

NEGATIVE ON FILE AT AHPP

VIEW FROM THE NORTH



MCKENZIE HOUSE
SCOTT, ARKANSAS
P. ZOLLNER

Pulaski Co

AUGUST, 1991

NEGATIVE ON FILE AT AHPP

VIEW FROM THE EAST

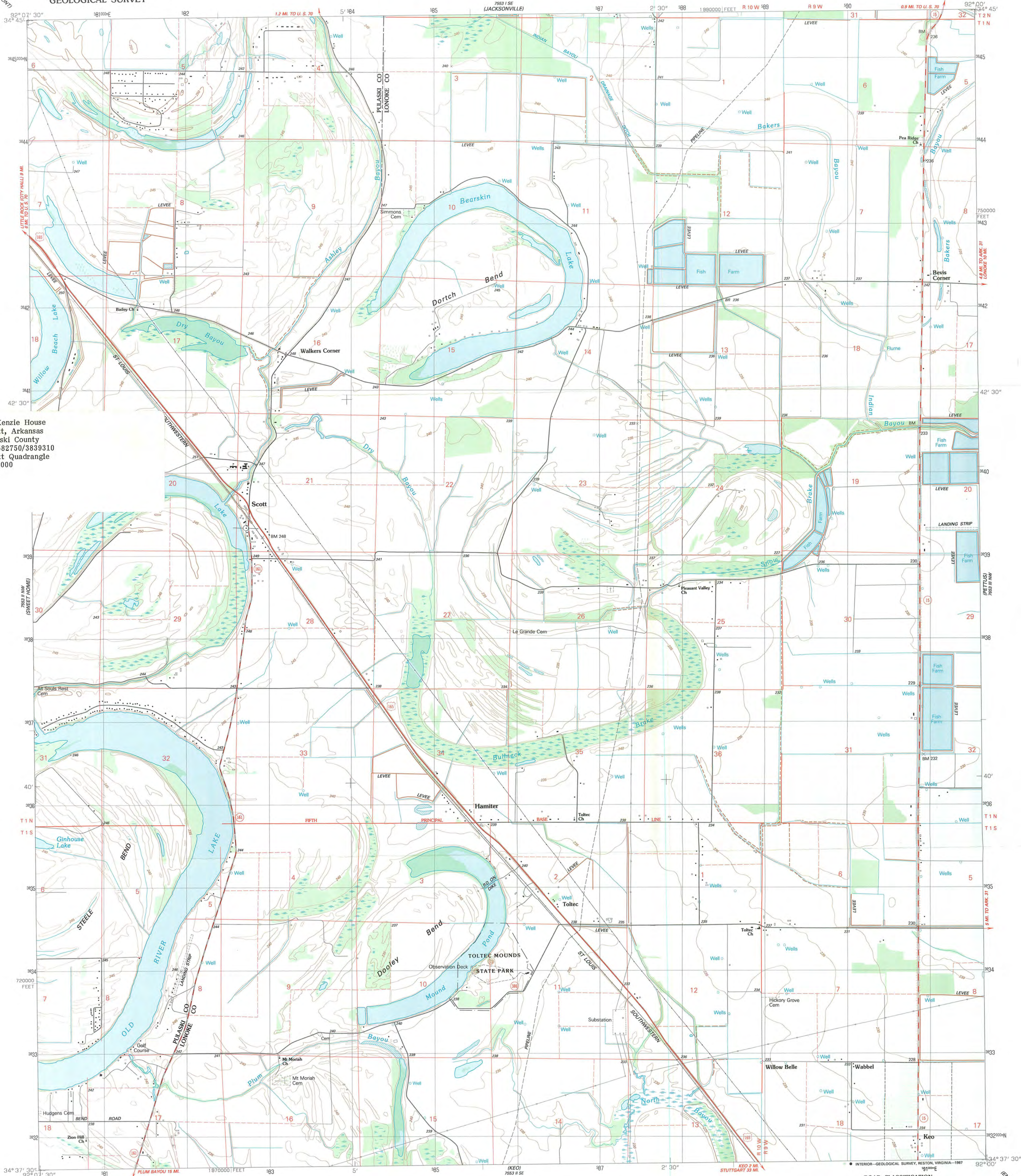
385 SW
(MC ALMON)

UNITED STATES
DEPARTMENT OF THE INTERIOR
GEOLOGICAL SURVEY

SCOTT QUADRANGLE
ARKANSAS
7.5 MINUTE SERIES (TOPOGRAPHIC)

385 SW
(LONGKE)

McKenzie House
Scott, Arkansas
Pulaski County
15/582750/3839310
Scott Quadrangle
1:24000



Produced by the United States Geological Survey

Control by USGS and NOS/NOAA

Topography by photogrammetric methods from aerial photographs taken 1984. Field checked 1985. Map edited 1987

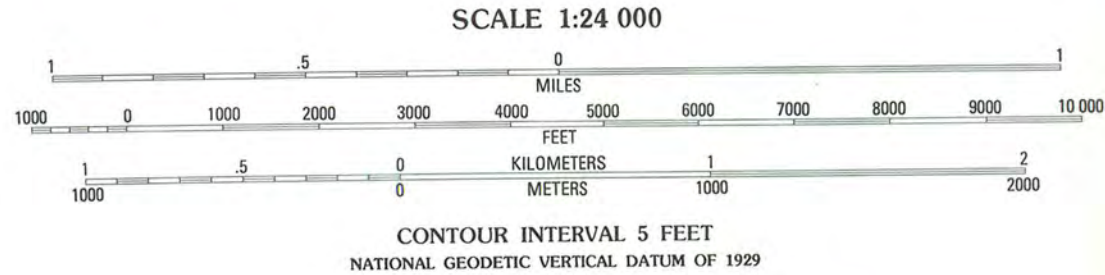
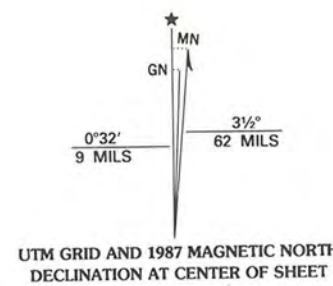
Projection and 10,000-foot grid ticks: Arkansas coordinate system, south zone (Lambert conformal conic)

1000-meter Universal Transverse Mercator grid, zone 15 1927 North American Datum

To place on the predicted North American Datum 1983, move the projection lines 8 meters south and 13 meters east as shown by dashed corner ticks

There may be private inholdings within the boundaries of the National or State reservations shown on this map

Fine red dashed lines indicate selected fence and field lines where generally visible on aerial photographs. This information is unchecked



THIS MAP COMPLIES WITH NATIONAL MAP ACCURACY STANDARDS
FOR SALE BY U.S. GEOLOGICAL SURVEY, DENVER, COLORADO 80225, OR RESTON, VIRGINIA 22092
AND ARKANSAS GEOLOGICAL COMMISSION, LITTLE ROCK, ARKANSAS 72204
A FOLDER DESCRIBING TOPOGRAPHIC MAPS AND SYMBOLS IS AVAILABLE ON REQUEST



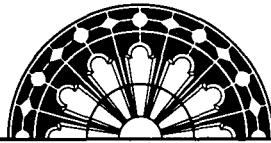
Primary highway, Light-duty road, hard or improved surface
Secondary highway, Unimproved road
Interstate Route U. S. Route State Route

SCOTT, ARK.

34092-F1-TF-024

1987

DMA 7553 II NE-SERIES V884



ARKANSAS
HISTORIC
PRESERVATION
PROGRAM

RECEIVED

FEB 04 1992

NATIONAL
REGISTER

January 29, 1992

Carol D. Shull
Chief of Registration
United States Department of the Interior
National Register of Historic Places
National Park Service
1100 "L" Street, NW
Washington, DC 20240

RE: McKenzie House
4911 Highway 161
Scott, Pulaski County

Dear Carol:

We are enclosing for your review the nomination of the above referenced property. The Arkansas Historic Preservation Program has complied with all applicable nominating procedures and notification requirements in the nomination process.

Thank you for your consideration in this matter.

Sincerely,

Cathy Buford
State Historic Preservation Officer

CB:kg

Enclosures

