



The Limestone Appt

SISTER'S
HAIR
SALON

Diner

8651-8622 US Hwy 31
East side of US Hwy 31
Calera Downtown historic District
Shelby Co, AL
Photo # 1

Resource
(#s 3, 4, 6, 7, 9, 10)



DAVE'S

Eastside of US Hwy 31
8251-8281 US Hwy 31 (Resource #s 3, 4, 6, 7, 9,
10, 11, 12, 13, 14)

Calera Downtown Historic District

Shelby Co, AZ

Photo # 2

CADLE'S

BUY-SELL-TRADE

REAL ESTATE
BUSINESS
ACQUISITIONS

AUCTIONS

ESTATE
ANTIQUES

ANTIQUES & JUNK

668-0204

GLASSWARE
POTTERY
LUMPS

2 HOUR
PARKING
8:00 AM
TO
5:30 PM

West side of US Highway 31
8258-8280 US Hwy 31 (Resource#s 5, 8, 17)

Calera Downtown Historic District

Shelby Co., AL

Photo # 3

A black and white photograph of a storefront for 'Linda's Florist & Gifts'. The building is constructed of brick and has a large sign mounted on the wall. The sign features the name 'LINDA'S FLORIST' in a large, elegant script font, with '&' in a smaller font below it, and 'GIFTS' in a bold, sans-serif font at the bottom. To the right of 'GIFTS' is the phone number '608-0016'. The storefront includes large display windows and a glass entrance door. An American flag is visible in the window to the right of the door. There are flower boxes under the windows and a large planter with flowers on the sidewalk. A utility pole with power lines is on the left side of the image. The sky is clear and bright.

LINDA'S FLORIST
&
GIFTS 608-0016

OPEN 7 DAYS
A WEEK

10828 AL Hwy 25 E (Resource #1)

Calera Downtown Historic District
Shelby Co, AL

Photo # 4



Spa & Boutique

SISTER'S
HAIR & TANNING
SALON

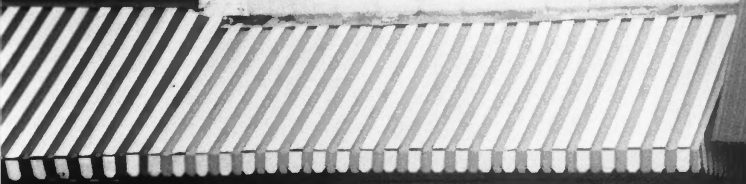
SISTER'S
Hair Tanning

9:00 AM - 12:00 PM
1:00 PM - 5:00 PM
9:00 AM - 1:00 PM
9:00 - 12:00

8251-8259 U.S. Highway 31
(Resource #'s 3, 4, 6)

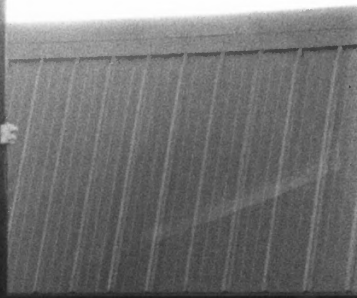
Calera Downtown Historic District
Shelby Co., AL

Photo # 5



BARBER Shop
 CLOSED
 Please Call Again
 Johnny

BAXLEY
 LISTENING
 WE DO
 ADJUSTED



Christian Life Fellowship
 Currently Meets At
 Rolling Hills Conference Center
 Sunday 10 AM Wednesday 7 PM



8261 U.S. Hwy 31 (Resource #7)

Calera Downtown Historic District
Shelby Co, AL

Photo #6

the
AnneX
downtown

Customer Life Fellowship
Loving and Caring Community
Sunday 10:00 AM - 11:00 AM
Wednesday 7:00 PM



NEXUS
"GIVE, RECEIVE & PRO"

AnneX

Customer Life Fellowship
Loving and Caring Community
Sunday 10:00 AM - 11:00 AM
Wednesday 7:00 PM

Customer Life Fellowship
Loving and Caring Community
Sunday 10:00 AM - 11:00 AM
Wednesday 7:00 PM

Customer Life Fellowship
Loving and Caring Community
Sunday 10:00 AM - 11:00 AM
Wednesday 7:00 PM

8265 US Hwy 31 (Resource #9)

Calera Downtown Historic District
Shelby Co, AZ

Photo # 7

8267 US Highway 31 (Resource #10)

Calera Downtown Historic District

Shelby Co, AZ

Photo # 8

LADIES' APPAREL
JEWELRY & GIFTS

Baer's
Carhart's 1898 CLOTHING Since 1898

SINCE **BAER'S** 1898
DEPT. STORE

BAER'S BOOT HEADQUARTERS
Price & Rent Free
Red Wing, Wolverine, Georgia
Carhart Dealer Lott Whelan
668-2733

Carhart

Carhart

Carhart

Carhart

Carhart

8271-8273 OS Hwy 31 (Resource #s 11-12)

Calera Downtown Historic District

Shelby Co, AL

Photo # 9



BAERS
DEPT. STORE
1899

8275 - 8281 US Highway 31 (Resource #s 13-14)

Calera Downtown Historic District
Shelby Co., AZ

Photo # 10



EDS PET

8279-8281 US. Hwy 31 (Resource #s 14-16)

Calera Downtown Historic District

Shelby Co, Az

Photo # 11

e Heart
A MALL



8258 US Hwy 31 (Resource #5)

Calera Downtown Historic District

Shelby Co, AL

Photo # 12



Hobbies of the Heart

APPLIANCES ARTIQUE & FLEA-MALL

1974

IVES

8262-8270 US Hwy 31 (Resource #8)

Calera Downtown Historic District
Shelby Co, Az

Photo # 13

CABLE'S
ANTIQUES & JUNK

668-0204

WE BUY SELL TRADE
Glassware Pottery Primitives



8280 ~~US~~ Highway 31 (Resource #17)

Calera Downtown Historic District

Shelby Co. AL

Photo # 14



1110 17th Av (Resource #23)

Calera Downtown Historic District

Shelby Co, Az

Photo # 15



THE HAIR STUDIO
668-2828

1120 17th Av (Resource #25)

Calera Downtown Historic District
Shelby Co, AL

Photo # 16



STORAGE
BY THE MONTH
1971

1140 17th Av (Resource # 27)

Calera Downtown Historic District

Shelby Co, AL

Photo # 17



1111 17 AVE

1111 17th Av (Resource # 24)

Calera Downtown Historic District
Shelby Co, AZ

Photo # 18



1127 17th Av (Resource # 26)

Calera Downtown Historic District
Shelby Co, AL

Photo # 19



1241-1245 17th Av (Resource # 28)
Calera Downtown Historic District
Shelby Co., AL

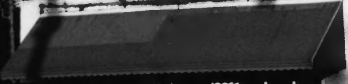
Photo # 20



COWART *Rexall* DRUGS

Cowart DRUG Co.
PRESCRIPTIONS
SICK ROOM SUPPLIES

Since 1920



Coca-Cola
BOTTLED BY THE
Coca-Cola



8320 US Hwy 31 (Resource # 18)

Calera Downtown Historic District
Shelby Co. AL

Photo # 21

ED'S PET WORLD

OPEN 7 DAYS A WEEK
MONDAY THROUGH SATURDAY 10-5 SUNDAY 11-4

EXOTIC
TROPICAL
FISH

1111
→



8360 US Hwy 31 (Resource #20)

Calera Downtown Historic District

Shelby Co, AL

Photo # 22



8371 US Hwy 31 (Resource #22)

Calera Downtown Historic District
Shelby Co, AL

Photo # 23



discount
food mart

TENNY CIGARETTES IN TOWN

Shell

ICE

ICE

89

8361 US Hwy 31 (Resource # 21)

Calera Downtown Historic District
Shelby Co, AL

Photo # 24

BOBBY BOWDON'S

AMERICAN
PICKUP
\$249

AMERICAN
MILLER
SALE \$299

AMERICAN
LEATHER
MOTORCYCLE
SALE \$299

AMERICAN
SALE \$149

AMERICAN
SALE \$299

AMERICAN
SALE \$299

8331 US Hwy 31 (Resource # 19)

Calera Downtown Historic District

Shelby Co, AL

Photo # 25



1110 18th Av (Resource #29)

Calera Downtown Historic District
Shelby Co., AZ.

Photo # 26



1116 18th Av (Resource # 30)

Calera Downtown Historic District

Shelby Co, AL

Photo # 27



1220 - 1870 - 812

1120 18th Av (Resource # 32)

Calera Downtown Historic District

Shelby Co, AL

Photo # 28



1117 18th Av (Resource # 31)

Calera Downtown Historic District
Shelby Co, AL

Photo # 29

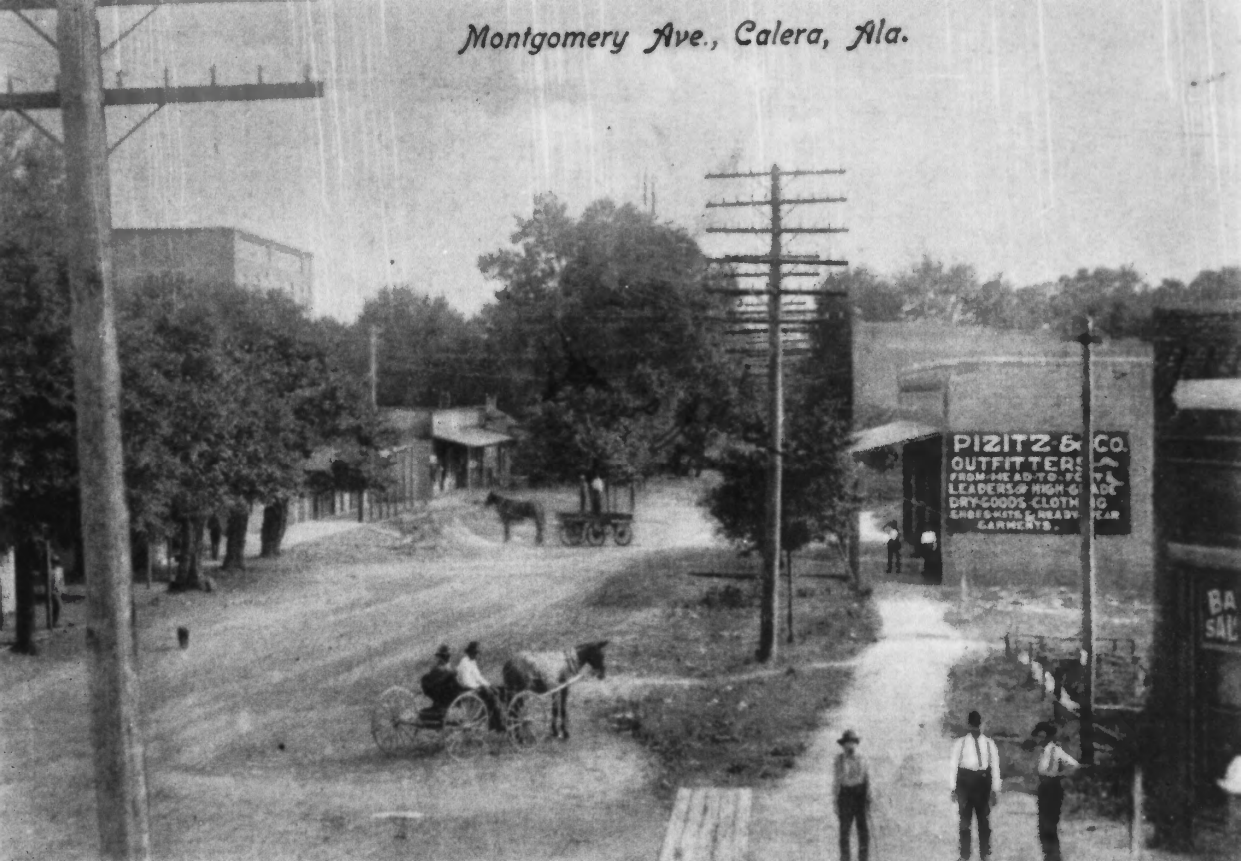


1121 18th Av (*Resource # 33)

Calera Downtown Historic District
Shelby Co., AL

Photo # 30

Montgomery Ave., Calera, Ala.



Calera Downtown Historic District
Shelby Co., AL

Photo # 31

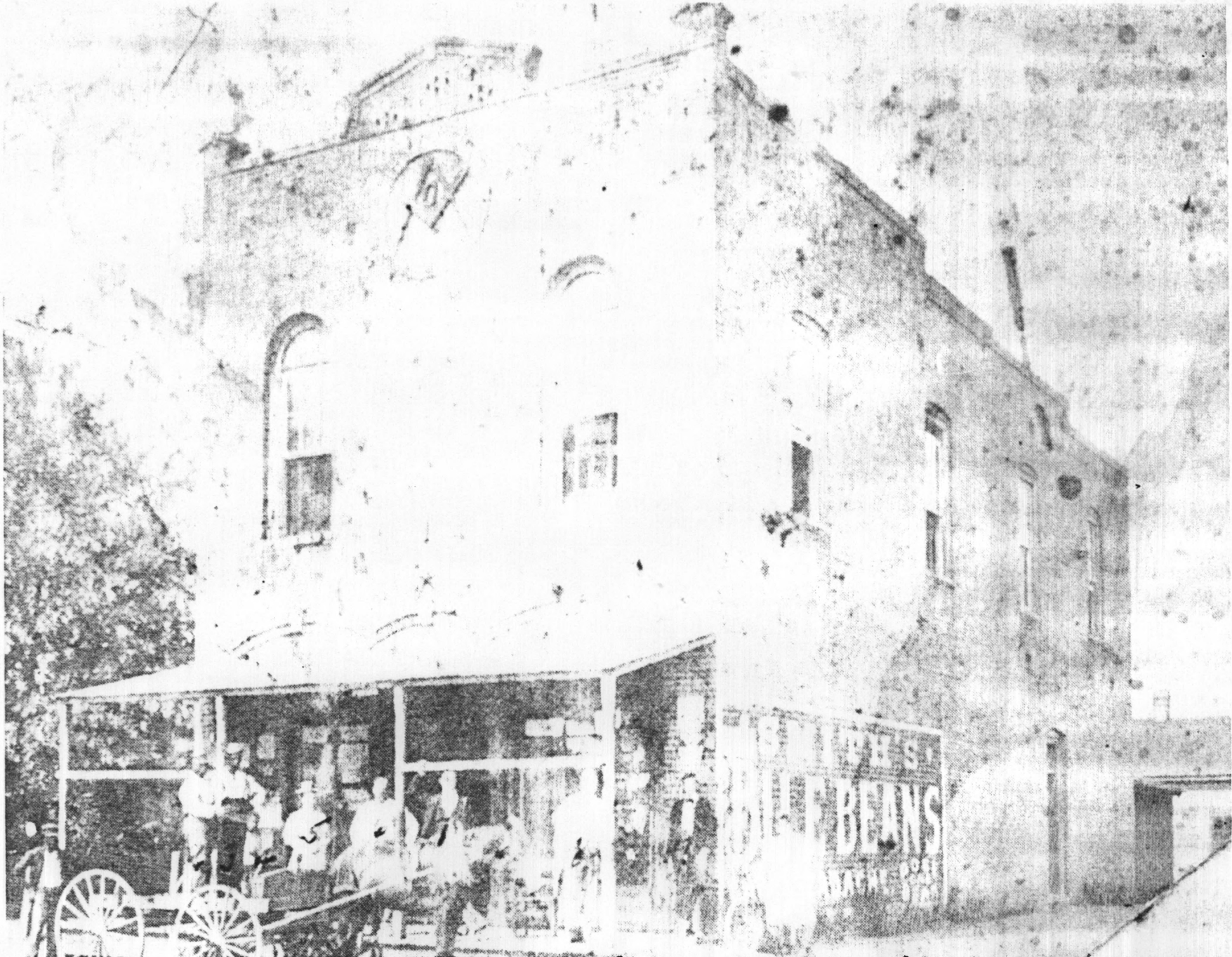


Wade Building (1903 -) The Wade Building was constructed in 1903 or 1904 and was located on the east side of Main street (Highway 31) and Twelfth street. This building remains standing today.

Calera Downtown Historic District

Shelby County, AL

Photo # 32



The Masonic Hall, the only brick store in town at the time it was built (1884 or 1885), housed a drugstore on its lower floor, as it does today. The upper floor was, and still is, used as meeting space for the Masons. At one time (prior to 1901), it served as headquarters for City government.

Calera Downtown Historic District

Shelby Co., AL

Photo # 33