



ST. JOSEPH'S HOSPITAL
LEWISTOWN, MONTANA
INTERIOR OF THE CHAPEL

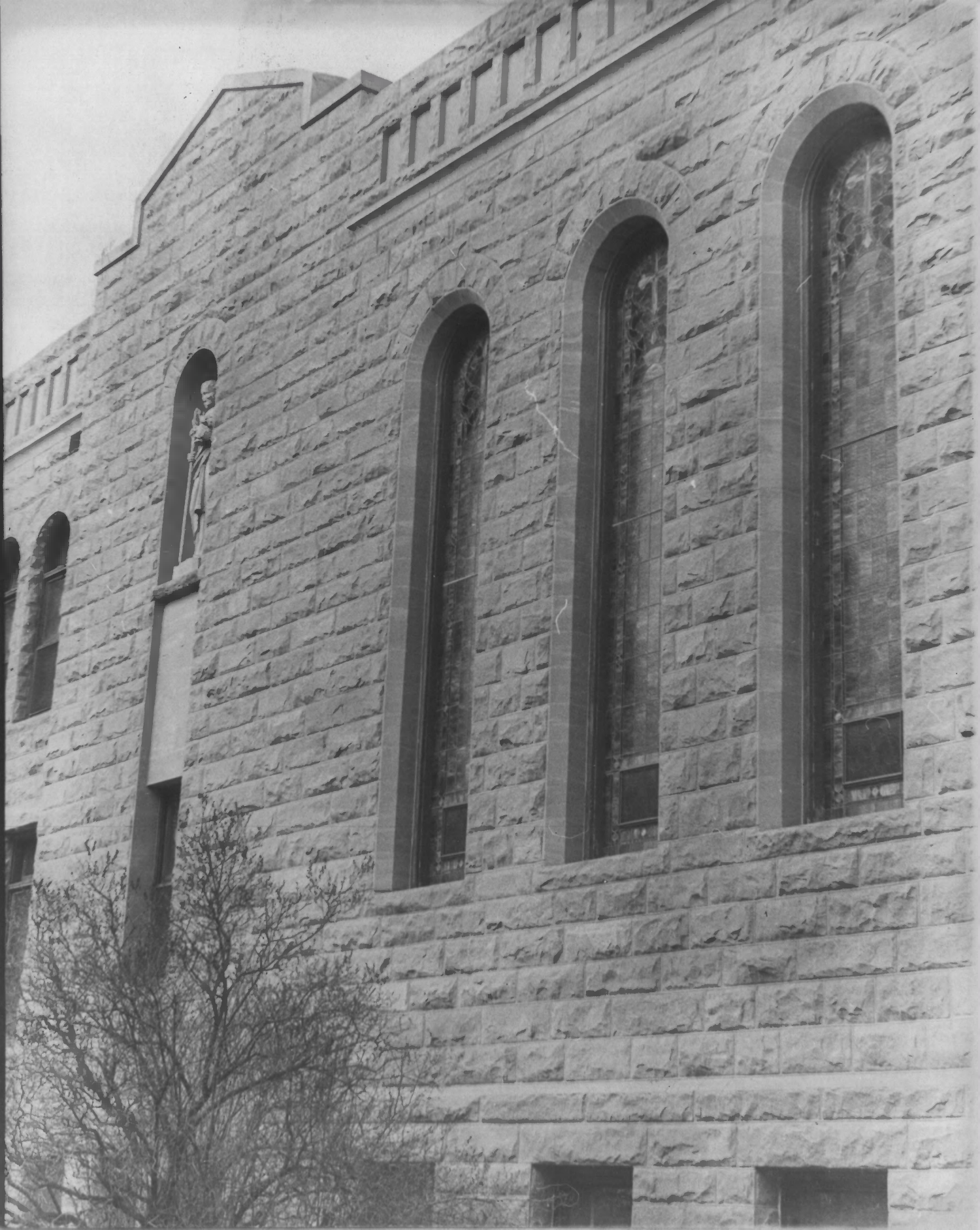
Fergus County

#1 of 7

Lorni Faber, Photographer
Taken April, 1978

MAY 15 1978

SEP 13 1978



ST. JOSEPH'S HOSPITAL

LEWISTOWN, MONTANA

Fergus County
VIEW LOOKING NORTH AT 1933 ADDITION,
SHOWING CHAPEL WINDOWS AND THE
STATUARY NICHE

#2 of 7

Lorni Faber, Photographer

Taken April, 1978

MAY 15 1978

SEP 13 1978



ST. JOSEPH'S HOSPITAL

LEWISTOWN, MONTANA

Fergus County
VIEW OF STATUARY NICHE AND STATUE OF

ST. JOSEPH

3 of 7

Lorni Faber, Photographer

Taken April, 1978

SEP 13 1978

MAY 2 1978



ST. JOSEPH'S HOSPITAL

LEWISTOWN, MONTANA

FEBBUS County
VIEW LOOKING NORTH, SHOWING UPPER
FLOORS, PARAPET WALL, CHAPEL WIN-
DOWS, STATUARY NICHE OF 1933 AND
1936 ADDITIONS

#4 of 7

Lorni Faber, Photographer

Taken April, 1978

SEP 13 1978



ST. JOSEPH'S HOSPITAL
LEWISTOWN, MONTANA
Fergus County
VIEW LOOKING WEST AT 1933 ADDITION,
SHOWING BASEMENT

5077

Lorni Faber, Photographer
Taken April, 1978

MAY 15 1978

SEP 13 1978



Typical wood staircase (still intact
throughout hospital but after enclosed)

ST. JOSEPH'S HOSPITAL
LEWISTOWN, MONTANA
FERGUS COUNTY
TYPICAL STAIRCASE & NEWEL POST

#6 of 7

Lorni Faber, Photographer

Taken April, 1978

MAY 15 1978

SEP 13 1978



ST. JOSEPH'S HOSPITAL
LEWISTOWN, MONTANA
FERGUS COUNTY

#7087

Lorni Faber, Photographer
Taken April, 1978

SEP 13 1978

MAY 15 1978