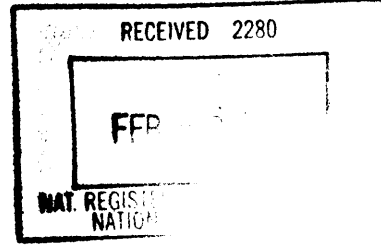


United States Department of the Interior
National Park Service



173

National Register of Historic Places Registration Form

This form is for use in nominating or requesting determination for individual properties and districts. See instruction in *How to Complete the National Register of Historic Places Registration Form* (National Register Bulletin 16A). Complete each item by marking "x" in the appropriate box or by entering the information requested. If an item does not apply to the property being documented, enter "N/A" for "not applicable." For functions, architectural classification, materials and areas of significance, enter only categories and subcategories from the instructions. Place additional entries and narrative items on continuation sheets (NPS Form 10-900a). Use a typewriter, word processor, or computer, to complete all items.

1. Name of Property

historic name Hose House No. 2

other names/site number West End Hose House, 6th and Colorado Hose House, 5CC967

2. Location

street & number 600 Colorado Boulevard [N/A] not for publication

city or town Idaho Springs [N/A] vicinity

state Colorado code CO county Clear Creek code 019 zip code 80452

3. State/Federal Agency Certification

As the designated authority under the National Historic Preservation Act, as amended, I hereby certify that this nomination request for determination of eligibility meets the documentation standards for registering properties in the National Register of Historic Places and meets the procedural and professional requirements set forth in 36 CFR Part 60. In my opinion, the property meets does not meet the National Register criteria. I recommend that this property be considered significant nationally statewide locally.
(See continuation sheet for additional comments [].)

James Dwight Hartman State Historic Preservation Officer January 13, 1998
Signature of certifying official/Title Date

State Historic Preservation Office, Colorado Historical Society
State or Federal agency and bureau

In my opinion, the property meets does not meet the National Register criteria.
(See continuation sheet for additional comments [].)

Signature of certifying official/Title Date

State or Federal agency and bureau

4. National Park Service Certification

I hereby certify that the property is:

entered in the National Register
See continuation sheet [].

determined eligible for the
National Register
See continuation sheet [].

determined not eligible for the
National Register.

removed from the
National Register

other, explain
See continuation sheet [].

Signature of the Keeper Date

Beth Roland 3/19/98

Hose House No. 2
Name of Property

Clear Creek/Colorado
County/State

5. Classification

Ownership of Property

(Check as many boxes as apply)

- private
- public-local
- public-State
- public-Federal

Category of Property

(Check only one box)

- building(s)
- district
- site
- structure
- object

Number of Resources within Property

(Do not count previously listed resources.)

Contributing Noncontributing

<u>0</u>	<u>0</u>	buildings
<u>0</u>	<u>0</u>	sites
<u>2</u>	<u>0</u>	structures
<u>0</u>	<u>0</u>	objects
<u>2</u>	<u>0</u>	Total

Name of related multiple property listing.

(Enter "N/A" if property is not part of a multiple property listing.)

N/A

Number of contributing resources previously listed in the National Register.

0

6. Function or Use

Historic Function

(Enter categories from instructions)

GOVERNMENT/fire station

Current Functions

(Enter categories from instructions)

OTHER/storage

7. Description

Architectural Classification

(Enter categories from instructions)

LATE VICTORIAN

Materials

(Enter categories from instructions)

foundation Stone
walls Brick

roof Asphalt
other _____

Narrative Description

(Describe the historic and current condition of the property on one or more continuation sheets.)

Hose House No. 2

Clear Creek/Colorado

Name of Property

County/State

8. Statement of Significance

Applicable National Register Criteria

(Mark "x" in one or more boxes for the criteria qualifying the property for National Register listing.)

- A** Property is associated with events that have made a significant contribution to the broad patterns of our history.
- B** Property is associated with the lives of persons significant in our past.
- C** Property embodies the distinctive characteristics of a type, period, or method of construction or represents the work of a master, or possesses high artistic values, or represents a significant and distinguishable entity whose components lack individual distinction.
- D** Property has yielded, or is likely to yield, information important in prehistory or history.

Criteria Considerations

(Mark "x" in all the boxes that apply.)

Property is:

- A** owned by a religious institution or used for religious purposes.
- B** removed from its original location.
- C** a birthplace or grave.
- D** a cemetery.
- E** a reconstructed building, object, or structure.
- F** a commemorative property.
- G** less than 50 years of age or achieved significance within the past 50 years.

Narrative Statement of Significance

(Explain the significance of the property on one or more continuation sheets.)

9. Major Bibliographic References

Bibliography

(Cite the books, articles and other sources used in preparing this form on one or more continuation sheets.)

Previous documentation on file (NPS):

- preliminary determination of individual listing (36 CFR 67) has been requested
- previously listed in the National Register
- previously determined eligible by the National Register
- designated a National Historic Landmark
- recorded by Historic American Buildings Survey
- # _____
- recorded by Historic American Engineering Record
- # _____

Areas of Significance

(Enter categories from instructions)

Architecture

Community Planning and Development

Periods of Significance

1882

Significant Dates

1882

Significant Person(s)

(Complete if Criterion B is marked above).

N/A

Cultural Affiliation

N/A

Architect/Builder

Unknown

Primary location of additional data:

- State Historic Preservation Office
- Other State Agency
- Federal Agency
- Local Government
- University
- Other:

Name of repository:

Hose House No. 2

Clear Creek/Colorado

Name of Property

County/State

10. Geographical Data

Acreage of Property Less than one

UTM References

(Place additional UTM references on a continuation sheet.)

1. 13 454940 4399280
Zone Easting Northing

3. Zone Easting Northing

2. Zone Easting Northing

4. Zone Easting Northing

[] See continuation sheet

Verbal Boundary Description

(Describe the boundaries of the property on a continuation sheet.)

Boundary Justification

(Explain why the boundaries were selected on a continuation sheet.)

11. Form Prepared By

name/title Mark Thomas Harpe, Intern (Edited by S. Doggett)

organization Colorado Center for Community Development date 08-26-97

street & number 535 16th St, Suite 320, Mail to Campus Box 128 telephone 303-620-4660

city or town Denver state CO zip code 80217-3364

Additional Documentation

Submit the following items with the completed form:

Continuation Sheets

Maps

A **USGS map** (7.5 or 15 minute series) indicating the property's location.

A **Sketch map** for historic districts and properties having large acreage or numerous resources.

Photographs

Representative **black and white photographs** of the property.

Additional Items

(Check with the SHPO or FPO for any additional items)

Property Owner

(Complete this item at the request of SHPO or FPO.)

name City of Idaho Springs, Jim White, City Administrator

street & number 1711 Miner Street, PO Box 907 telephone 303-567-4421

city or town Idaho Springs state CO zip code 80452

Paperwork Reduction Act Statement: This information is being collected for applications to the National Register of Historic Places to nominate properties for listing or determine eligibility for listing, to list properties, and to amend existing listings. Response to this request is required to obtain a benefit in accordance with the National Historic Preservation Act, as amended (16 U.S.C. 470 *et seq.*).

Estimated Burden Statement: Public reporting burden for this form is estimated to average 18.1 hours per response including time for reviewing instructions, gathering and maintaining data, and completing and reviewing the form. Direct comments regarding this burden estimate or any aspect of this form to the Chief, Administrative Services Division, National Park Service, P.O. Box 37127, Washington, DC 20013-7127; and the Office of Management and Budget, Paperwork Reductions Projects (1024-0018), Washington, DC 20503.

**United States Department of the Interior
National Park Service**

**National Register of Historic Places
Continuation Sheet**

HOSE HOUSE NO. 2
Clear Creek County, CO

Section number 7 Page 1

DESCRIPTION

Built circa 1882, Hose House No. 2 was constructed to house the fire hose cart associated with early volunteer fire fighting efforts in the west end of Idaho Springs. The property is located in a residential area at the northeast corner of 6th Avenue and Colorado Boulevard. The hose house faces south onto Colorado Boulevard. The site is relatively flat, with a slight rise to the rear. Overall, the structure is in good condition. Although portions of its brick exterior have been patched with stucco, the property retains integrity in terms of location, setting, design, workmanship, feeling, and association.

The one-story structure has a rectangular plan measuring 16 x 20 feet. The walls are painted red and extend almost to grade, leaving very little of what appears to be a rubble foundation visible. The north wall was stuccoed at an unknown date, and there are stucco patches on the lower portion of the west, south, and east walls. The brick walls extend to form a parapet on the east, south, and west. The parapet is topped with corbeled brick detailing on the south facade. On the east and west, the parapet is stepped.

The flat roof consists of wood rafters that extend beyond the north wall and a wood sub-roof that is covered with rolled asbestos roofing. A brick chimney, capped with decorative brickwork pierces the roof on the east.

The south facade includes a central segmental arch opening which contains two wood paneled garage doors that are painted white with brick red trim. The surrounding wood frame is also painted red. The doors, which appear to be original, have been rehung to open outward. A standard size entry door exists within the left garage door. Within the arch, above the doors, the inscription "HOSE No 2" appears in white.

Single, double hung 4/4 wood framed windows, set in segmental arches of brick, are found on the east and west walls. The wood lug sills, windows, and surrounding trim are painted white. There are no openings on the north.

On the interior, the rafters and the brick walls are exposed. The floor is concrete. On the east wall, the brick chimney includes an outlet for a pot-bellied stove pipe. Although the structure currently functions as a storage facility for antique fire fighting equipment, it ceased to function as a working hose house in 1929.

Siren Tower

The circa 1916 siren tower, located approximately 6 feet to the north of the hose house, is a contributing structure. The tower, approximately 6 feet square at its base, is constructed of angle iron and is topped with a cylindrical metal siren that is painted green. On the east side, a narrow metal ladder extends to the top of the tower's framework.

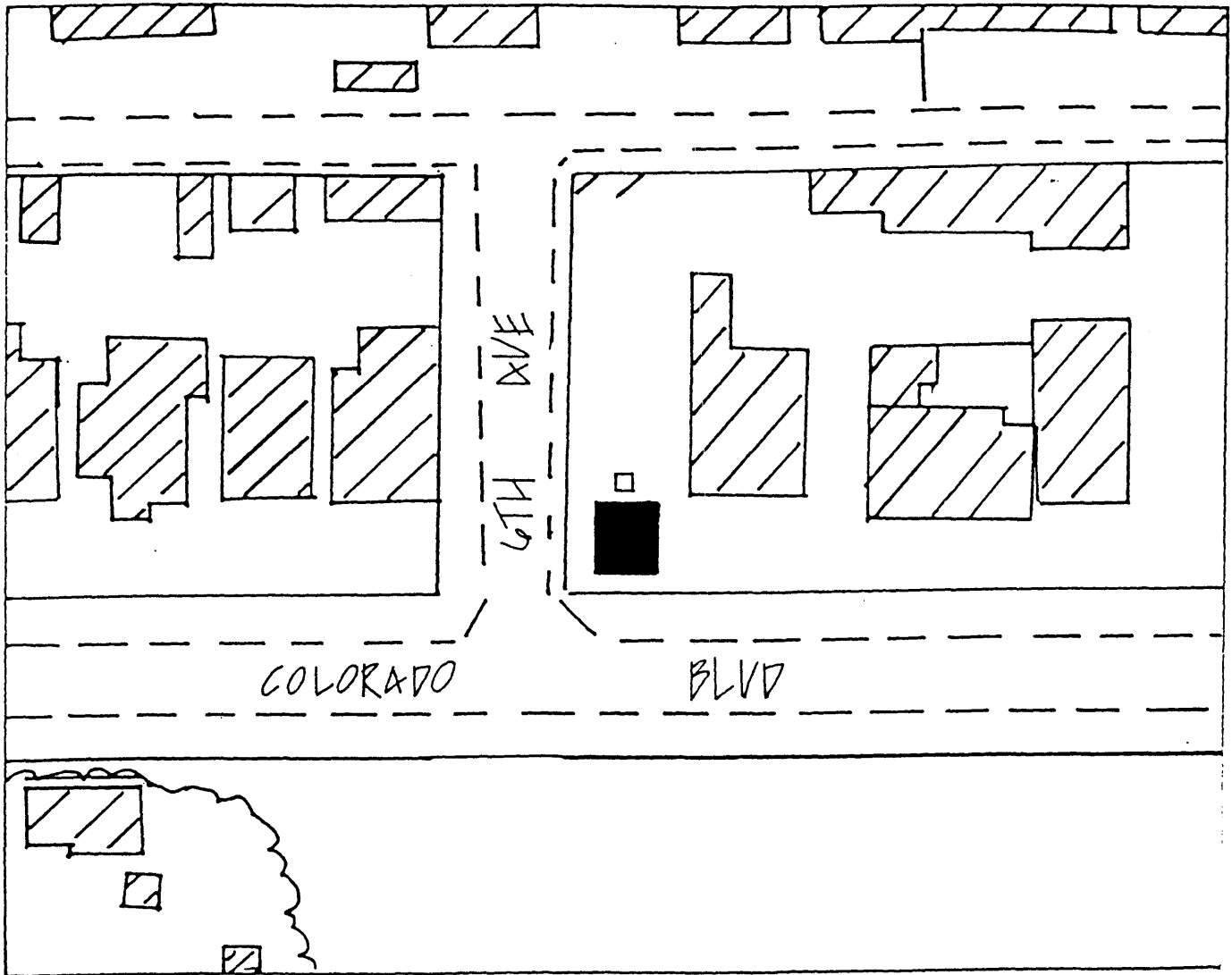
United States Department of the Interior
National Park Service

National Register of Historic Places
Continuation Sheet

HOSE HOUSE NO. 2
Clear Creek County, CO

Section number 7 Page 2

SITE PLAN



- TOWER
- HOSE HOUSE NO. 2
- ▨ SURROUNDING BUILDINGS



United States Department of the Interior
National Park Service

National Register of Historic Places
Continuation Sheet

HOSE HOUSE NO. 2
Clear Creek County, CO

Section number 8 Page 3

SIGNIFICANCE

The circa 1882 Hose House No. 2 is significant under Criterion C for Architecture as a building type associated with a period of construction and for Community Development and Planning for its association with the early efforts of Idaho Springs residents to provide basic community infrastructure.

During the late 19th and early 20th century, three small brick hose houses were constructed, at strategic locations within Idaho Springs, to support the larger Central Hose House located in the downtown commercial area. The small hose houses were similar in appearance and design, and each played a significant role in the community's fire fighting efforts. Although specifically constructed only for storage of the carts which carried the fire hoses, their arched window and door openings and decorative brickwork trim reflected the use of materials and detailing found in the much larger commercial buildings being constructed in the downtown area during the same period.

Hose House No. 2 was constructed in order to protect the west end of the growing city and is believed to have initially functioned as a substation of the Central Hose House. The structure and its hose cart remained in service until 1929.

The circa 1907 East End Hose House was demolished at an unconfirmed date, while the circa 1882 Hose House No. 2 and the 1881 Bryan Hose House remain intact. Hose House No. 2 compares favorably with the Bryan Hose House which is located approximately one mile to the east. The significance of the property is enhanced by the existence of the surviving siren tower located to the structure's north.

Hose House No. 2 remains at its original location, set close to the adjacent street, and its small rectangular plan, original lettering, and large double doors contribute to its ability to reflect its historic use. Although the original brick exterior has been painted and portions have been patched with stucco, the structure retains sufficient integrity to serve as an important visual reminder of its role in the establishment of basic community infrastructure within Idaho Springs.

Historic Background

The success of the surrounding mining region influenced the growth and development of Idaho Springs. Placer operations in the 1860s first resulted in a temporary community of tents and primitive wood structures. By the 1870s, the accelerating development of hardrock mining began to give the community an aura of stability. The arrival of the railroad in 1877 strengthened Idaho Springs' position as a supply center, and numerous brick commercial buildings, reflecting late Victorian and early 20th-century detailing, were constructed in the downtown business district.

**United States Department of the Interior
National Park Service**

**National Register of Historic Places
Continuation Sheet**

HOSE HOUSE NO. 2
Clear Creek County, CO

Section number 8 Page 4

The Idaho Springs Fire Department was organized in 1878 after a devastating fire burned a local boarding house and brewery to the ground. The failure of the local bucket brigade to contain this fire prompted the community to organize against the threat of future fires.

Since the primary function of the small hose houses was hose cart storage, the volunteers met with other hose company volunteers in the circa 1878, wood frame Central Hose House on Miner Street, adjacent to an early town hall. Circa 1912, a new wood frame Central Hose House, located at 1340 Miner Street, was constructed to accommodate the changing needs of the fire department. This building is recognized as contributing to the National Register listed Idaho Springs Downtown Commercial District.

By 1886, Idaho Springs had a fire department of 70 volunteer men, 3 independent hose carts, 1,800 feet of 2½ inch hose, 1 hook and ladder truck, and 17 double hydrants.

The three hose carts, which were used to carry hoses to fight fires, were housed at three distinct locations within the city. The hose carts were physically pulled by volunteer firemen to the scene of a fire. Multiple locations made the fire fighting efforts more productive by reducing the distance between the equipment and the actual fires. By 1886, the hose cart locations were: the Central Hose House, Hose House No. 2, also known as the West End Hose House; and the Bryan Hose House, also known as Hose Company No. 2.

Volunteers who manned the hose carts were organized into independent companies. These organizations known as hose companies usually consisted of 20 to 30 volunteers. They were headed by a foreman who had an assistant foreman, and a secretary and treasurer to help with administrative duties. Each hose company was responsible for raising funds and maintaining its equipment.

The volunteer fire companies usually functioned as brotherhoods or fraternal organizations. Potential members were voted on and faced the possibility of being blackballed. Members were expected to attend a certain number of meetings annually and were removed from the roster if they did not. As was typical, the Idaho Springs companies sponsored fundraising balls and participated in a variety of social events both locally and statewide.

The Idaho Springs Fire Department was headed by a chief engineer and an assistant chief engineer. The chief made semi-annual reports available to the proper governing body. His report often gave information on the condition of fire fighting equipment, the total number of volunteers within all the companies, the number of fires and their outcomes and recommendations on how to make the community a safer place from the danger of fire.

By 1904, a third hose company, Hose Company No. 3, had been formed. In 1907, Sanborn Fire Insurance Maps credit Idaho Springs with having 80 volunteers, 4 hose houses, one hook and ladder truck and 5 independent hose carts. The fourth hose house was called the East End Hose House and was located in the rapidly growing east end of town.

**United States Department of the Interior
National Park Service**

**National Register of Historic Places
Continuation Sheet**

HOSE HOUSE NO. 2
Clear Creek County, CO

Section number 8 Page 5

During a meeting held on December 7, 1920, the companies decided to consolidate. Fire ordinances which had promoted safer living conditions, the use of more fire resistant building materials, the ability of fire fighters to respond more quickly, and the stability of the city prompted the consolidation. By 1921, with the approval of the city council, only one company consisting of 40 members met.

In 1926, the Idaho Springs Fire Department re-organized again into four distinct districts: the Grass Valley, East Miner and Soda Creek District, which included the East End Hose House; the Sunnyside District, which included the Bryan Hose House; the Central District, which included the Central Hose House; and the West End District, which included the West End Hose House.

These districts each contained a series of fire boxes which were hooked up by telegraph to a main or central alarm box in the Central Hose House. If an alarm was pulled, the bell in the belfry of the Central Hose House tower would ring in code to summon the volunteers.

In 1929, after much debate and effort, Idaho Springs bought its first motorized fire fighting truck which rendered the hose carts and their hose houses obsolete.

Circa 1960, the former King Hotel directly across the street from the Central Hose House was converted into a fire house. It functioned as the fire station until a new one was built on Colorado Boulevard in the eastern portion of the city in 1963.

United States Department of the Interior
National Park Service

National Register of Historic Places
Continuation Sheet

HOSE HOUSE NO. 2
Clear Creek County, CO

Section number 9 Page 6

BIBLIOGRAPHY

Published Materials

History of Clear Creek County: Tailings, Tracks & Tommyknockers. First Edition. Denver, Colorado, Specialty Publishing, Inc.; The Historical Society of Idaho Springs.

Noel, Thomas J. *Buildings of Colorado.* (Series - Society of Architectural Historians, Buildings of the United States) Oxford University Press, NY, Oxford, 1997.

Stoehr, C. Eric. *Bonanza Victorian Architecture and Society in Colorado Mining Towns.* University of New Mexico Press, Albuquerque, 1975.

Zurier, Rebecca. *The Firehouse: An Architectural and Social History.* Abbeville Press, NY. 1982. Third Printing 1991.

Unpublished Materials

Bradley, Christine, Clear Creek County Archivist and Historian. [Materials Gathered from 19th Century Newspapers the *Colorado Miner* and the *Georgetown Courier*], copy of which was given to Mark Thomas Harpe by Christine Bradley in June of 1997.

Minute Books from April 1912 - March 1940 of the Idaho Springs Fire Department, kept in possession of the Idaho Springs Fire Department. (Don Krueger, acting fire chief, Clear Creek County, Colorado, 1997).

Scrapbook of the Idaho Springs Fire Department, kept in possession of the Idaho Springs Fire Department. (Don Krueger, acting fire chief, Clear Creek County, Colorado, 1997.)

White, Willis H. *Idaho Springs Downtown Commercial District.* National Register Nomination Form. Copy on file at Colorado Historical Society, 1984.

United States Department of the Interior
National Park Service

National Register of Historic Places
Continuation Sheet

HOSE HOUSE NO. 2
Clear Creek County, CO

Section number 10 Page 7

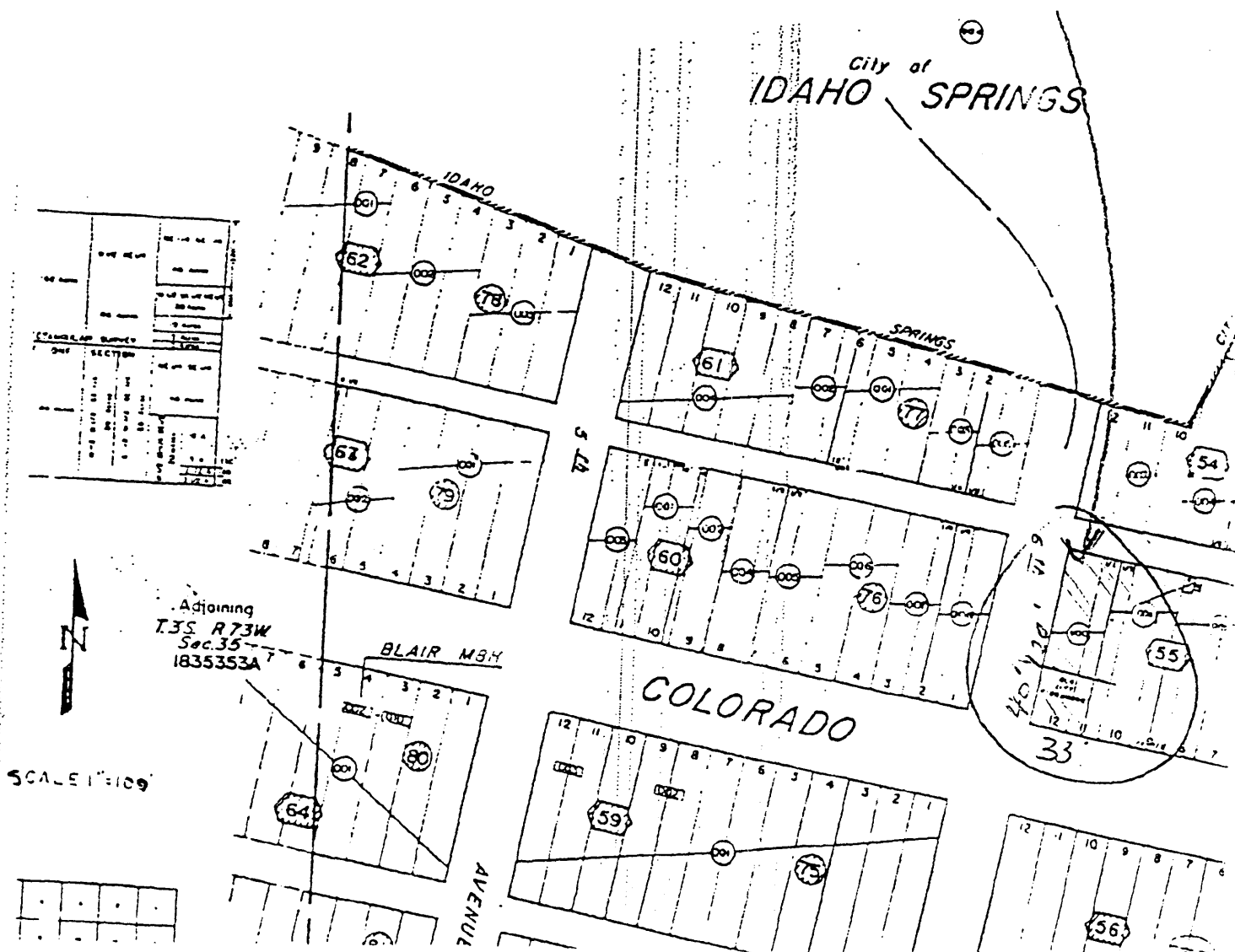
GEOGRAPHICAL DATA

Verbal Boundary Description

The south 40 feet of the west 1/2 of Lot 11 & the south 40 feet of Lot 12, Block 55, in the City of Idaho Springs, the County of Clear Creek, the State of Colorado.

Boundary Justification

The boundary includes the parcel of land historically associated with the property.



United States Department of the Interior
National Park Service

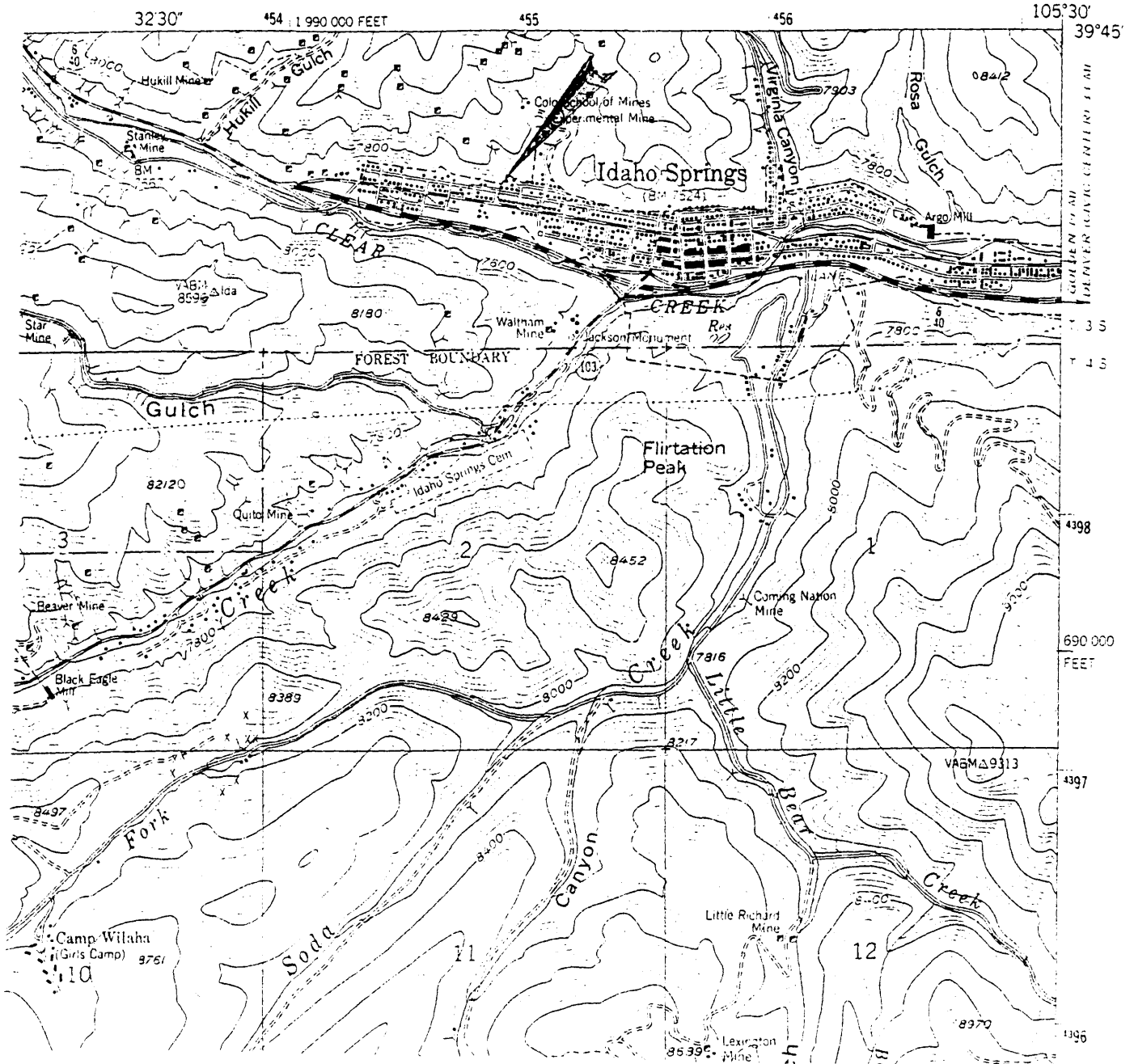
National Register of Historic Places
Continuation Sheet

HOSE HOUSE NO. 2
Clear Creek County, CO

Section number Additional Materials Page 8

USGS MAP
Idaho Springs, Colorado

7.5 MINUTE SERIES (TOPOGRAPHIC)
NE/4 GEORGETOWN 15 QUADRANGLE



United States Department of the Interior
National Park Service

National Register of Historic Places
Continuation Sheet

HOSE HOUSE NO. 2
Clear Creek County, CO

Section number Additional Materials Page 9

PHOTOGRAPH LOG

The following information pertains to photographs numbers 1-6.

Name of Property: Hose House No. 2

Location: 600 Colorado Boulevard, Idaho Springs, Clear Creek County, CO 80452

Photographer: Mark Harpe

Date of Photographs: October 1997

Negatives: City of Idaho Springs, 1711 Miner Street, P.O. Box 907, Idaho Springs, CO 80452

<u>Photo No.</u>	<u>Information</u>
1	South facade, view north
2	South and east sides, view northwest
3	South facade, view north
4	East side, view northwest
5	North side, with siren tower, view south
6	West and south sides, view northeast

United States Department of the Interior
National Park Service

National Register of Historic Places
Continuation Sheet

BRYAN HOSE HOUSE
Clear Creek County, CO

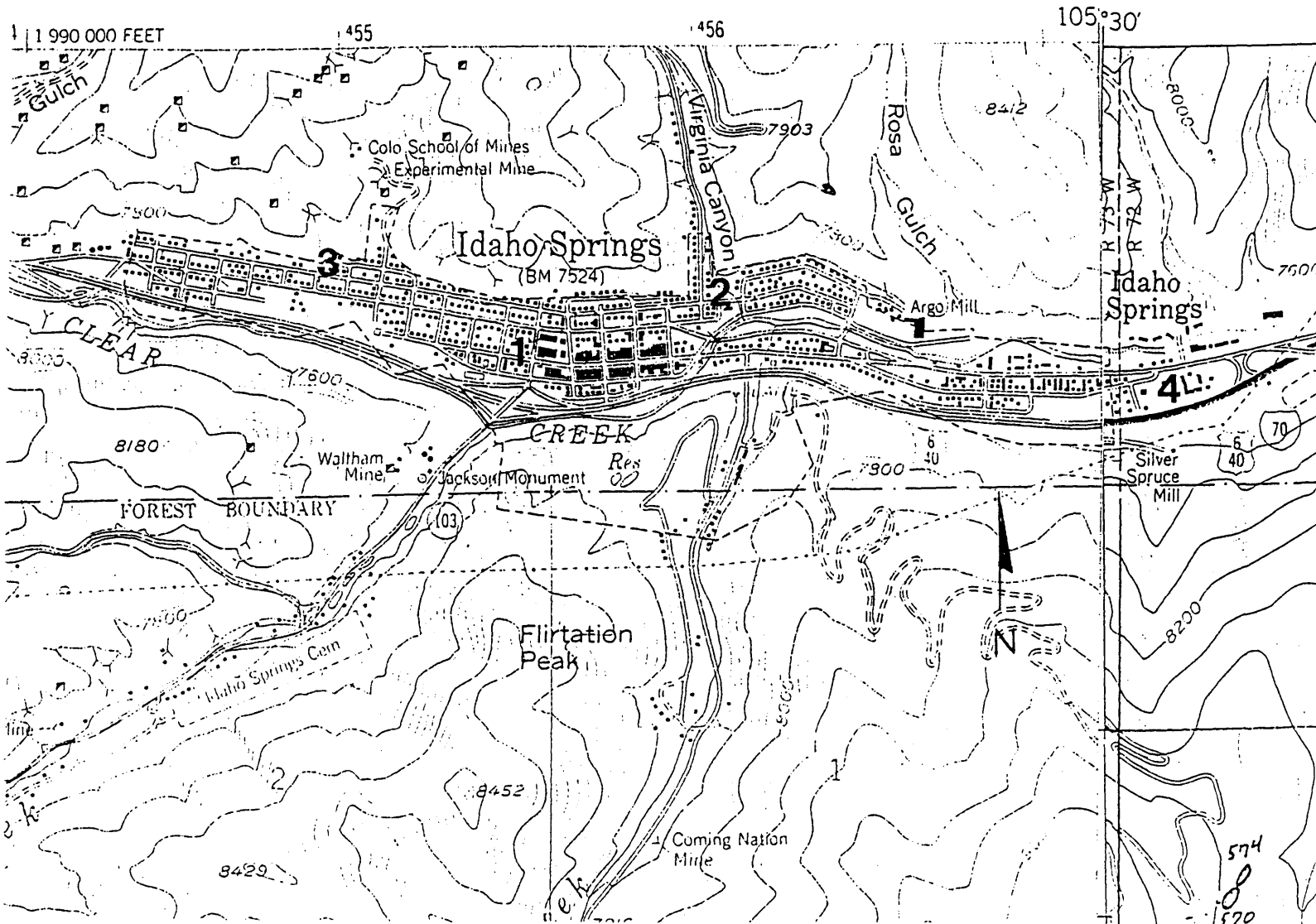
Section number Additional Materials Page 10

LOCATIONAL MAP

Idaho Springs - Late 19th & Early 20th Century - Firefighting Facilities

Key

- 1. Central Hose House
- 2. Bryan Hose House
- 3. Hose House No. 2
- 4. East End Hose House - demolished



United States Department of the Interior
National Park Service

National Register of Historic Places
Continuation Sheet

HOSE HOUSE NO. 2
Clear Creek County, CO

Section number Additional Materials Page 10

LOCATIONAL MAP

Idaho Springs - Late 19th & Early 20th Century - Firefighting Facilities

Key

- 1. Central Hose House
- 2. Bryan Hose House
- 3. Hose House No. 2
- 4. East End Hose House - demolished

