



10 13 '98

3033 NE Bryce Street

Multnomah, OR.

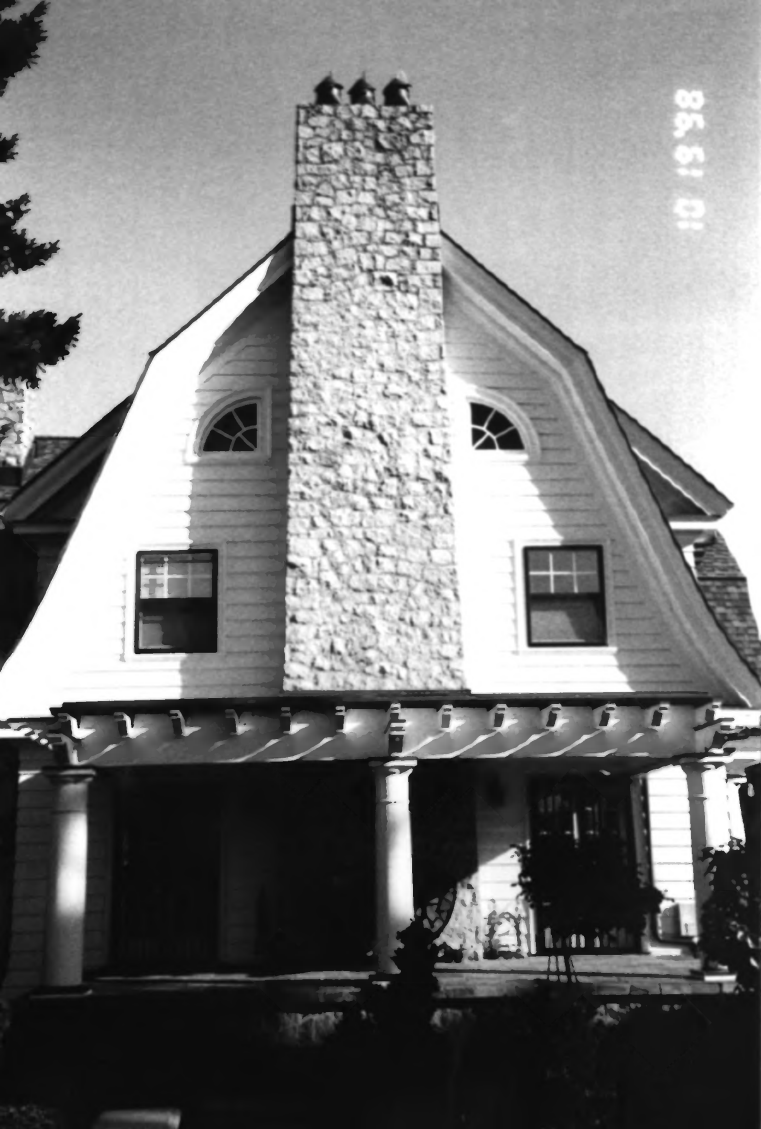
Robert Curry

10-12-04

3033 NE Bryce Street

south main facade facing north

201



05.31.01

3033 NE Bryce Street

Multnomah, OR

Amber Curry

10-12-04

3033 NE Bryce Street

West facade facing east

#2



111'99

The Jeffrey House

3033 NE Bryce St.

MULTNOMAH, OR.

Amber Curry - 1-4-05

3033 NE Bryce St.

North facade, facing South

#3



11/93

The Jeffrey House  
3033 NE Bryce St.  
Multnomah, OR

Amber Curry

1-4-05

3033 NE Bryce St.

East facade, facing west  
#4





10 19 '98

3033 NE Bryce Street

Multnomah, OR

Amber Curry

10-12-04

3033 NE Bryce Street

Perada - Facing West

# 5



98

3033 NE Bryce Street

Multnomah, OR

Amber Cuning

10-12-04

3033 NE Bryce Street

stairs to Pergola - facing West

#6



3033 NE Bryce Street  
Multnomah, OR.

Amber Curry

10-12-04

3033 NE Bryce Street

sundial - facing west

# 7



3033 NE Bryce Street  
Multnomah, OR

Amber Curry  
10-12-04

3033 NE Bryce Street

kitchen nook facing  
south

#8





10 19 '98

3033 NE Bryce Street

Multnomah, OR

Amber Curry

10-12-04

3033 NE Bryce Street.

Dining Room - facing east

#9



10 19 '98

3033 NE Bryce Street

Multnomah, OR

Amber Curry

10-12-04

3033 NE Bryce Street

Living Room facing southwest

#10



3033 NE Bryce Street

Multnomah, OR

Amber Curry

10-12-04

3033 NE Bryce Street

Kitchen facing west

# 11



10 19 '98

3033 NE Bryce Street

Multnomah, OR.

Amber Curry

10-12-04

3033 NE Bryce Street

tin ceiling in study facing north

# 12



85,61 01

DE

3033 NE Bryce Street  
Multnomah, OR

Amber Curry

10-12-04

3033 NE Bryce Street

built in writing desk in study facing  
south

#13



3033 NE Bryce Street

Multnomah, OR.

Amber Curry

10-12-04

3033 NE Bryce Street

2nd floor bathroom facing  
north

#17



10 19 '98

3033 NE Bryce Street

Multnomah, OR

Amber Curry

10-12-04

3033 NE Bryce Street

4-layered molding in master bedroom

#15









