

Namur Historic District, Wisconsin
Yau Chun Wong Farmstead
Old House (28), facing southeast
Photo: William Tishler, 1985



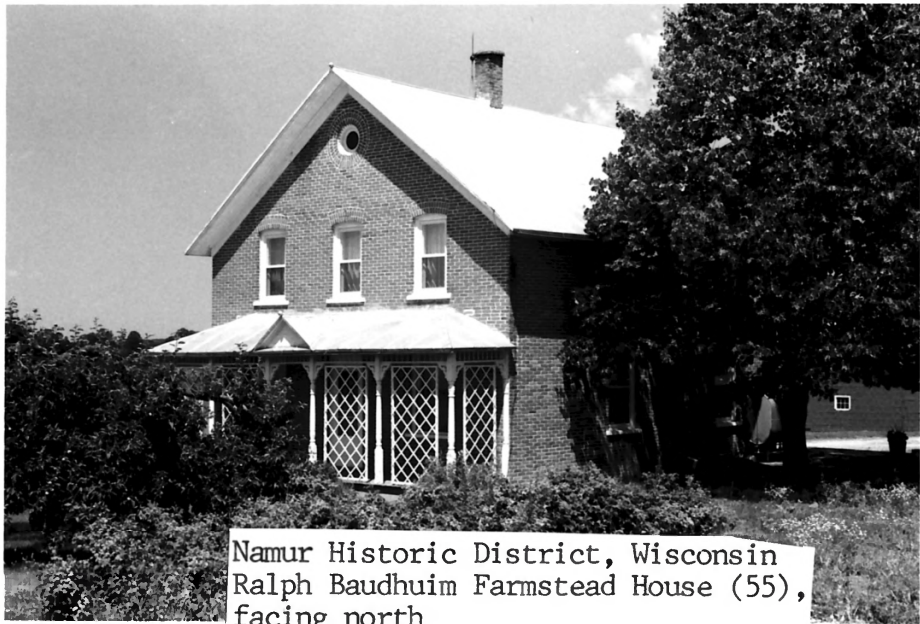
Namur Historic District, Wisconsin
Douglas Pierre Farmstead (26)
facing northwest
Photo: William Tishler, 1985



Namur Historic District, Wisconsin
Joseph Lampereur Farmstead (30)
Photo: William Tishler, 1985



Namur Historic District, Wisconsin
Kermit Conard Farmstead (47),
looking northeast
Photo: William Tishler, 1985



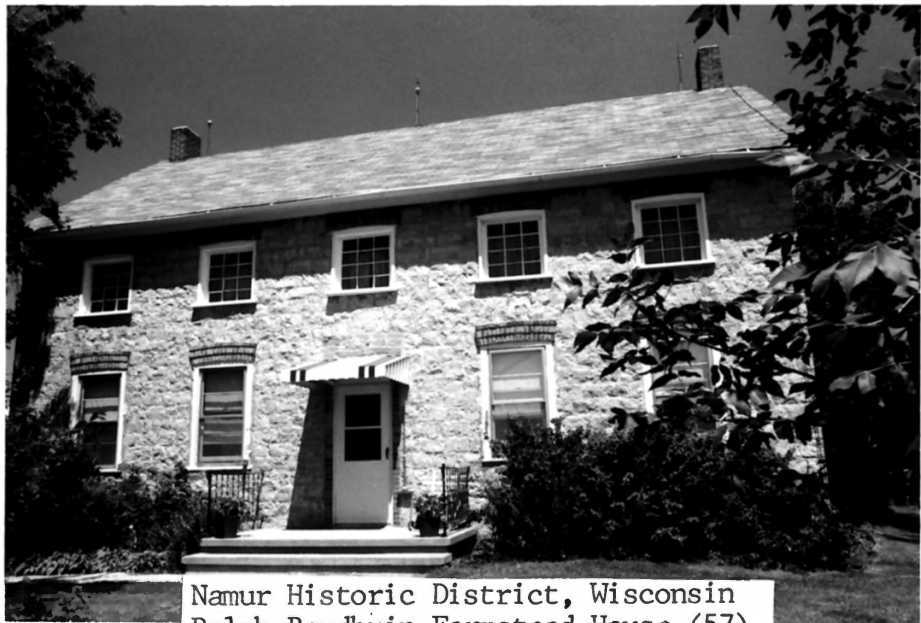
Namur Historic District, Wisconsin
Ralph Baudhuim Farmstead House (55),
facing north
Photo: William Tishler, 1985



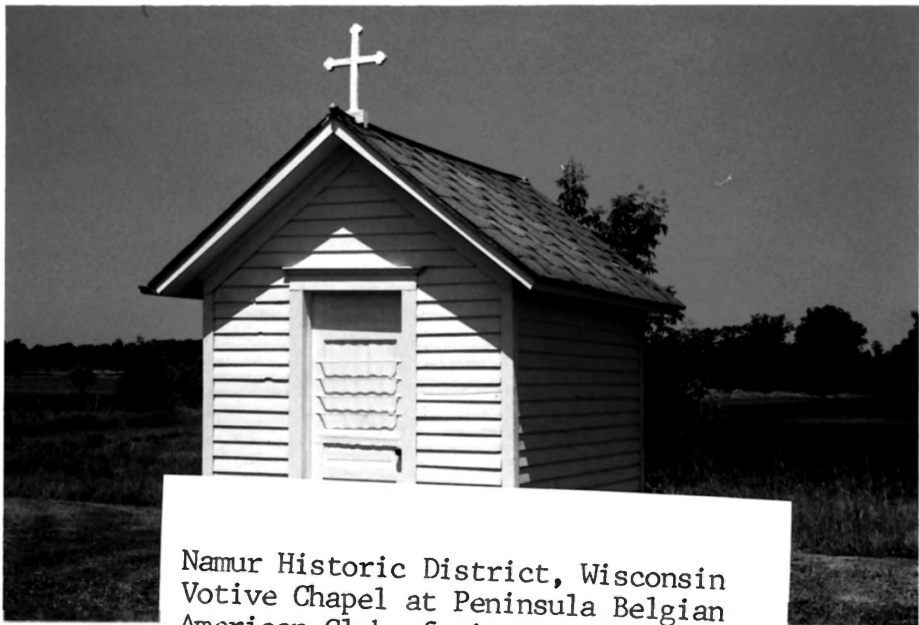
Namur Historic District, Wisconsin
David Jeanquart Farmstead (56)
Outbuildings, facing northwest
Photo: William Tishler, 1985



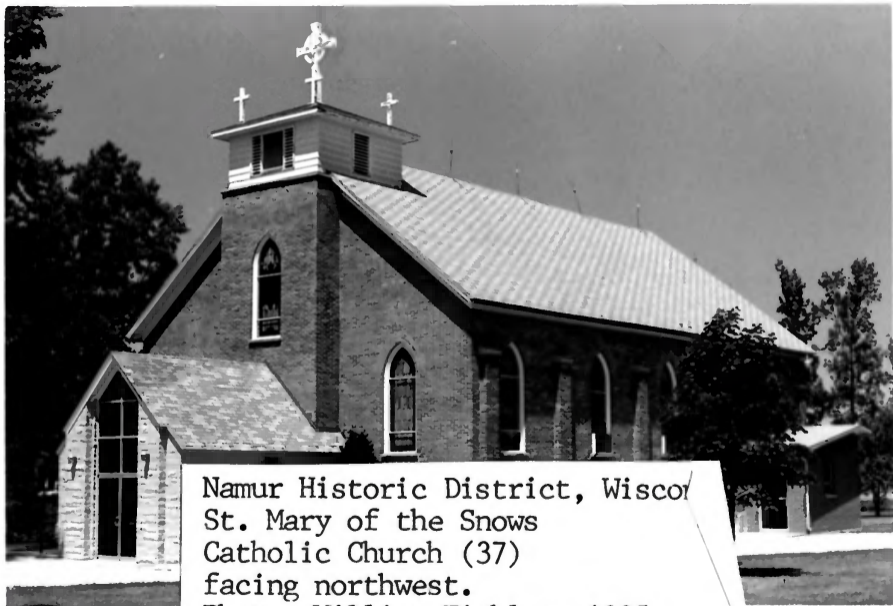
Namur Historic District, Wisconsin
James Baudhuin Farmstead (57)
Outbuildings, facing northwest
| Photo: William Tishler, 1985



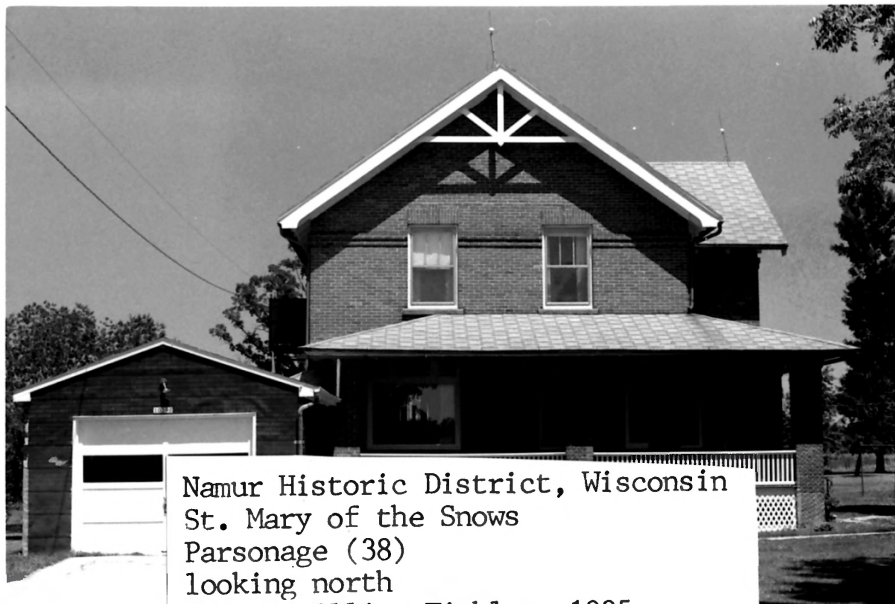
Namur Historic District, Wisconsin
Ralph Baudhuin Farmstead House (57),
facing north
Photo: William Tishler, 1985



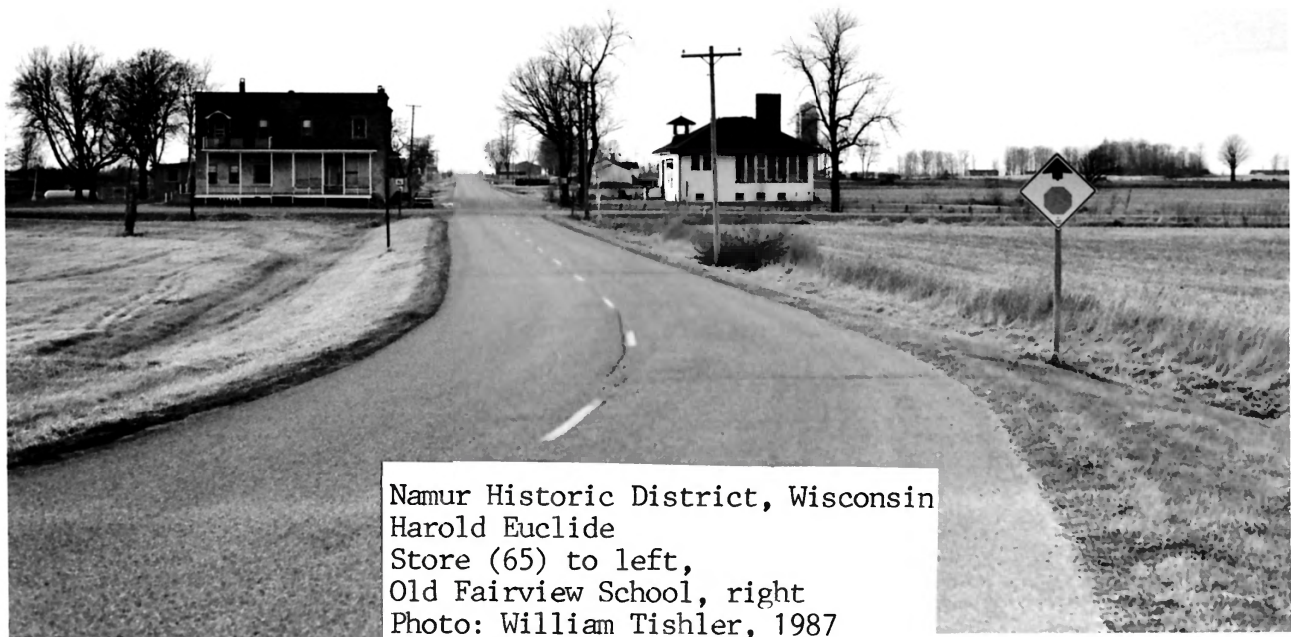
Namur Historic District, Wisconsin
Votive Chapel at Peninsula Belgian
American Club, facing north northwest
Photo: William Tishler, 1985



Namur Historic District, Wisconsin
St. Mary of the Snows
Catholic Church (37)
facing northwest.
Photo: William Tishler, 1985



Namur Historic District, Wisconsin
St. Mary of the Snows
Parsonage (38)
looking north
Photo: William Tishler, 1985



Namur Historic District, Wisconsin
Harold Euclide
Store (65) to left,
Old Fairview School, right
Photo: William Tishler, 1987