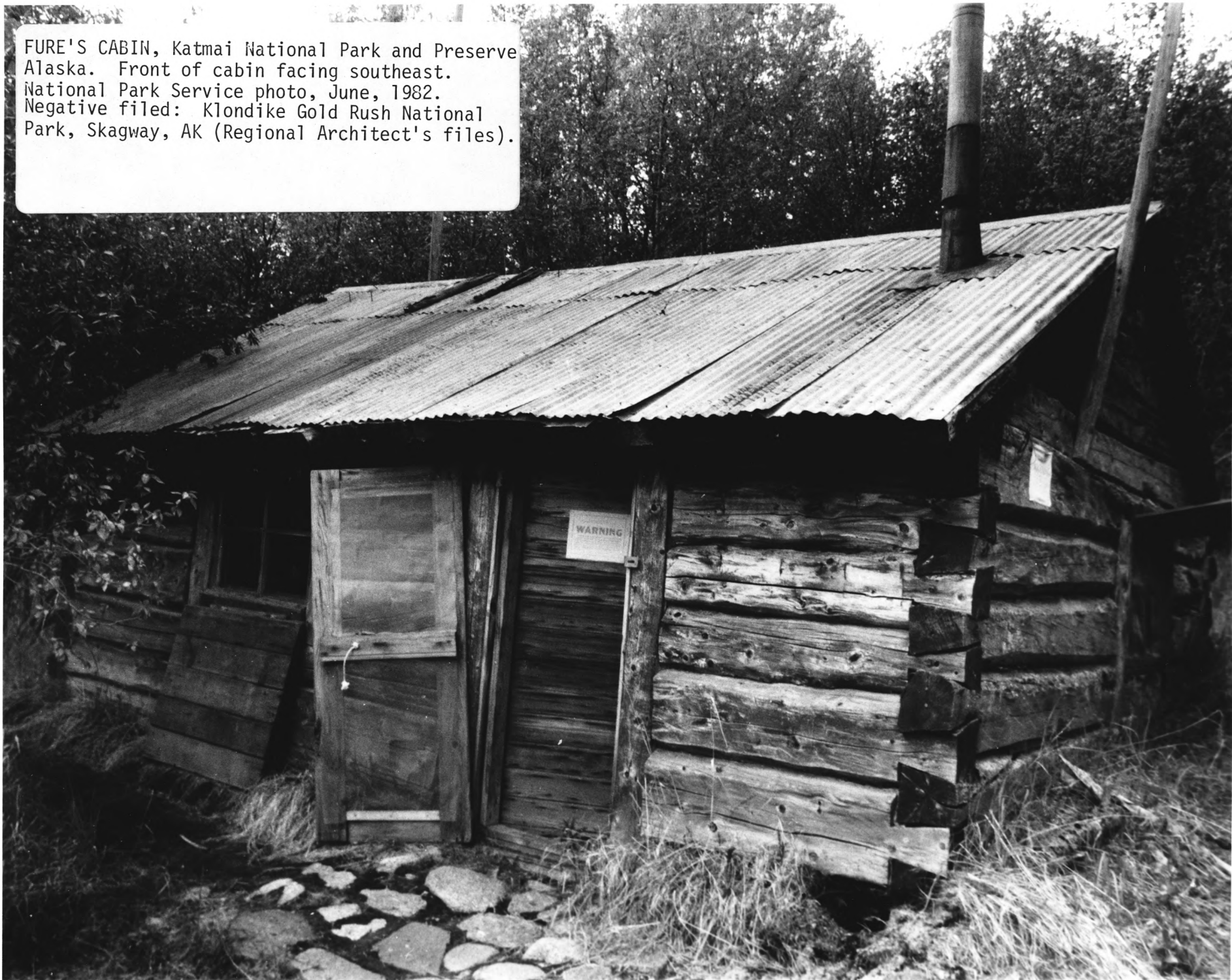


FURE'S CABIN, Katmai National Park and Preserve, Alaska. Front of southeast corner showing log construction details and animal traps. NPS photo, August, 1973. Neg. filed Katmai Park office, King Salmon, Alaska 99613.

FURE'S CABIN, Katmai National Park and Preserve
Alaska. Front of cabin facing southeast.
National Park Service photo, June, 1982.
Negative filed: Klondike Gold Rush National
Park, Skagway, AK (Regional Architect's files).

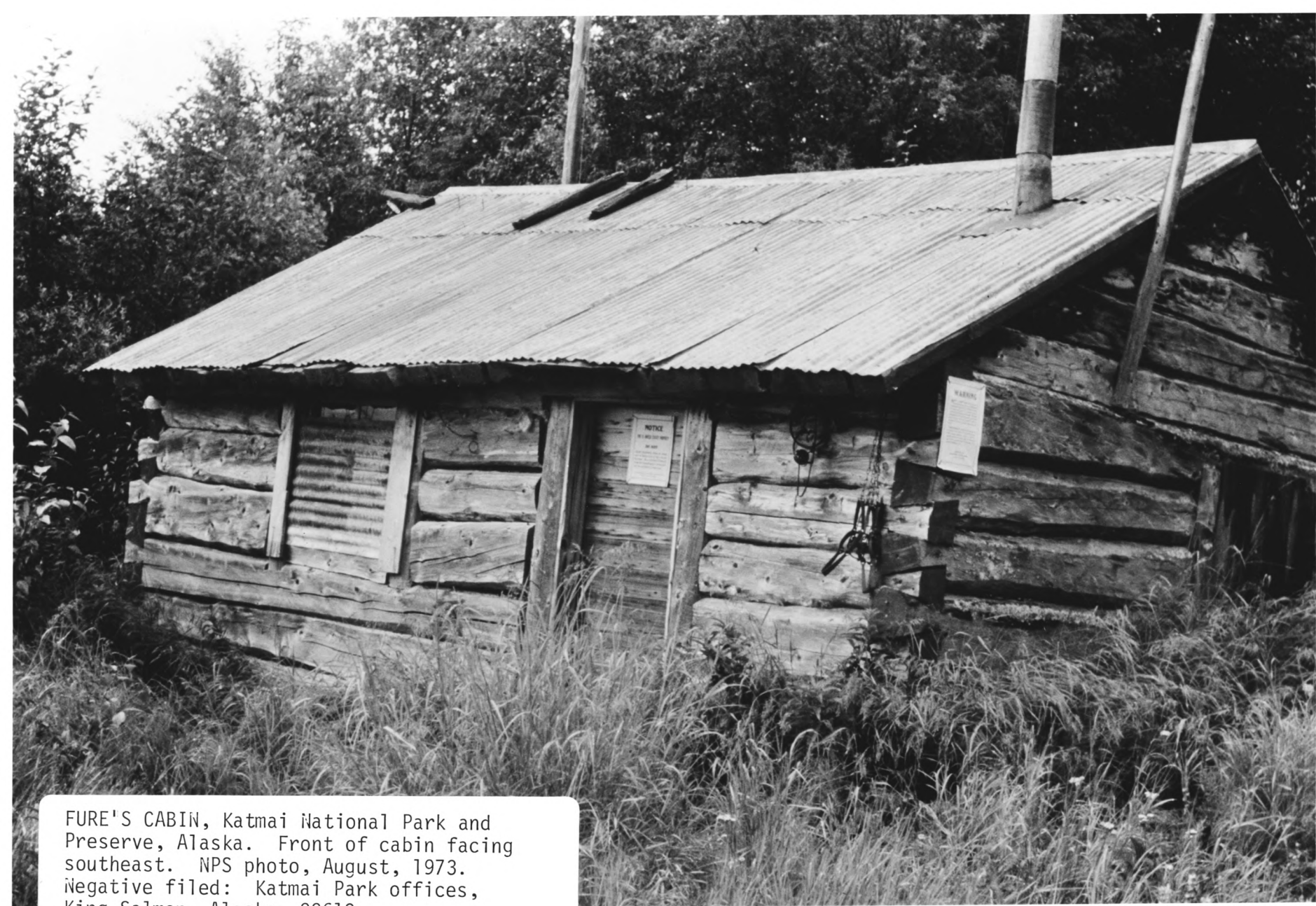




Fure's Cabin, Katmai National Park and Preserve, Alaska. NW view of storage shed for lumber. NPS photo, Sept. 1983. Negative filed at Alaska Regional Office, NPS, Anchorage, Alaska. J. Estus.



Fure's Cabin, Katmai National Park and Preserve, Alaska. Remains of dory on sandy beach west of the cabin itself. NPS photo. Sept. 1983. Neg. filed Alaska Regional Office, Anchorage, Alaska. J. Estus



FURE'S CABIN, Katmai National Park and Preserve, Alaska. Front of cabin facing southeast. NPS photo, August, 1973. Negative filed: Katmai Park offices, King Salmon, Alaska 99613



FURE'S CABIN, Katmai National Park
and Preserve, Alaska. Southeastern
view of cabin, with windmill tower in
background. NPS photo, August 1975.
Negative filed Katmai Park office,
King Salmon, Alaska 99613



Fure's Cabin, Katmai National Park and Preserve, Alaska. Outhouse located about 20' southeast of cabin. NPS photo, June, 1983. Negative filed: Regional Architect's files, Klondike Gold Rush NHP, Skagway, AK. D. Snow



FURE'S CABIN

KATMAI NATIONAL PARK & Preserve

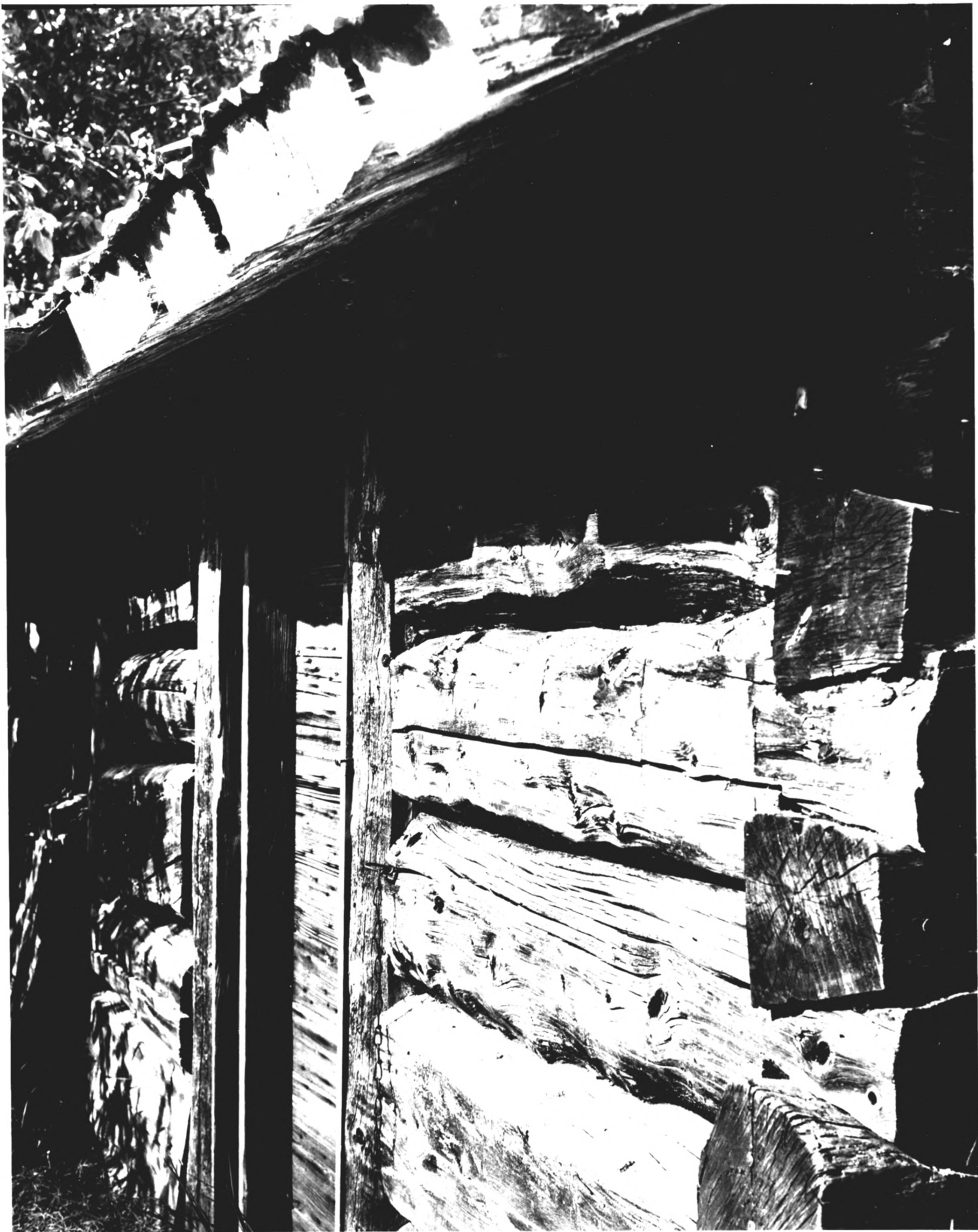
#1



FURE'S CABIN

KATHAI NATIONAL PARK & RESERVE

#2



FURR'S CABIN

KATHAI NATIONAL PARK & RESERVE

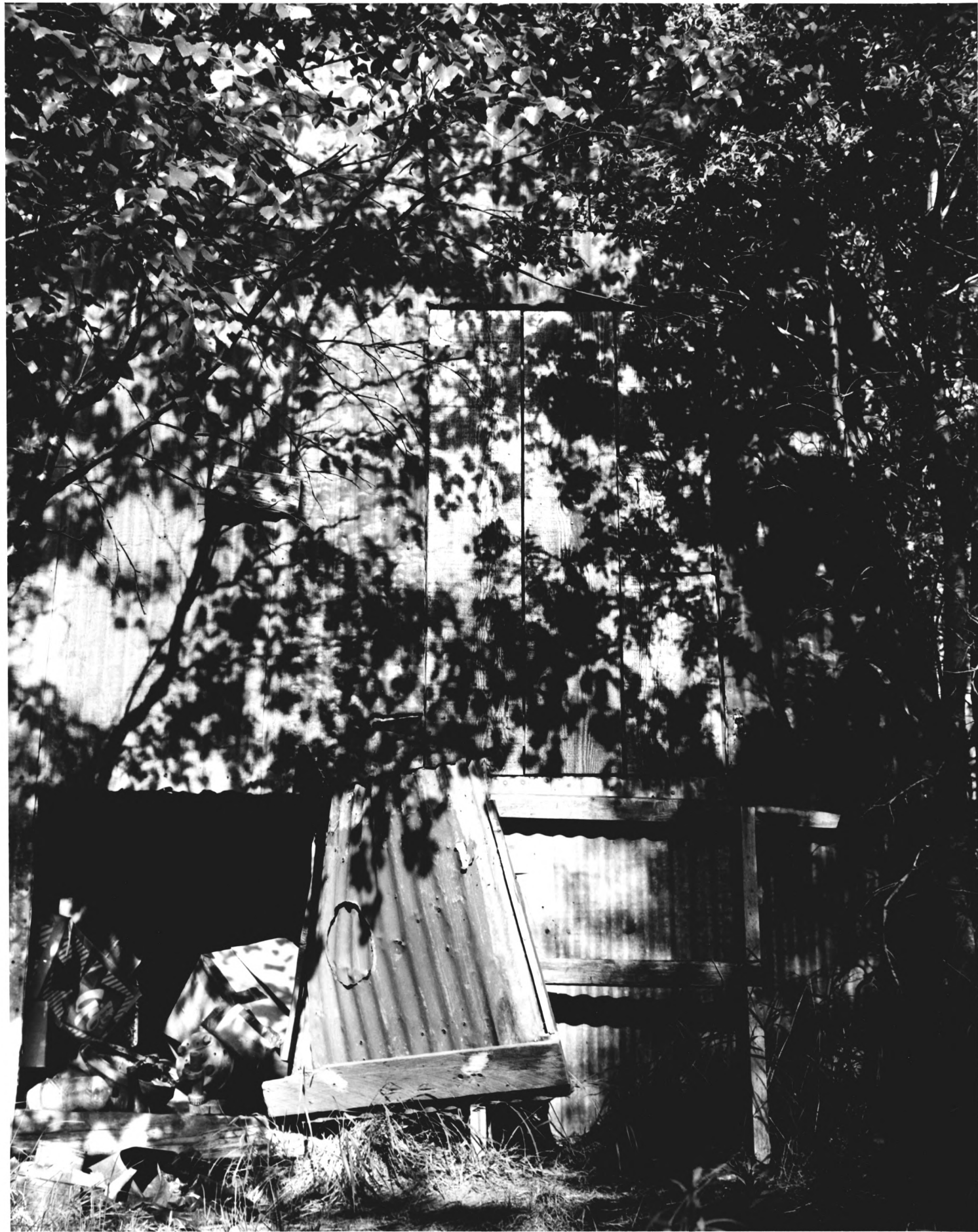
#3



FuEE'S CABIN; Windmill Tower

KATMAI National Park & Preserve

#4



FURE'S CABIN: Windmill Tower Storage

KATMAI National Park & Reserve

#5



FURE'S CABIN : Storage Shed

KATHAI NATIONAL PARK & RESERVE

6



Fure's Cabin : Out house

KATHAI NATIONAL PARK & PRESERVE

#7