



Sloss Blast Furnaces
1st Ave. at 32d St.
Birmingham, Ala.

Photo No. 3

By: George R. Adams, AASLH

Neg. at: HSS, HCRS

Date: February 1978

View: From northwest, showing from right to left, a portion of the Powerhouse, the Air Conditioning House, ruins of the Laboratory, and the Bathhouse.



Sloss Blast Furnaces
1st Ave. at 32d St.
Birmingham, Ala.

Photo No. 1

By: George R. Adams, AASLH

Neg. at: HSS, HCRS

Date: February 1978

**View: From southwest, showing furnace
number two on left and furnace number
one on right.**



Sloss Blast Furnaces
1st Ave. at 32d St.
Birmingham, Ala.

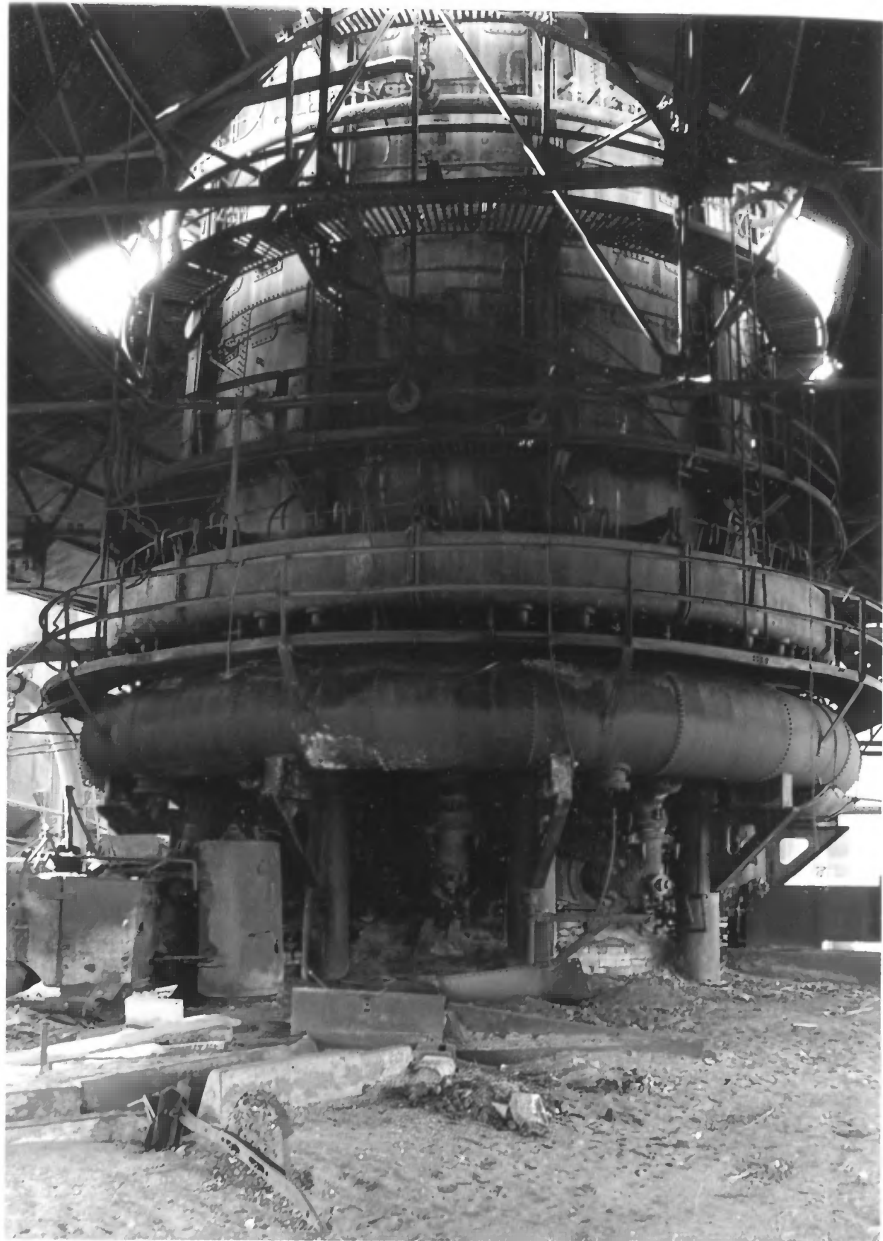
Photo No. 4

By: George R. Adams, AASLH

Neg. at: HSS, HCRS

Date: February 1978

**View: From northwest, showing west end
of Powerhouse and the Blowing-engine
House.**



Sloss Blast Furnaces
1st Ave. at 32d St.
Birmingham, Ala.

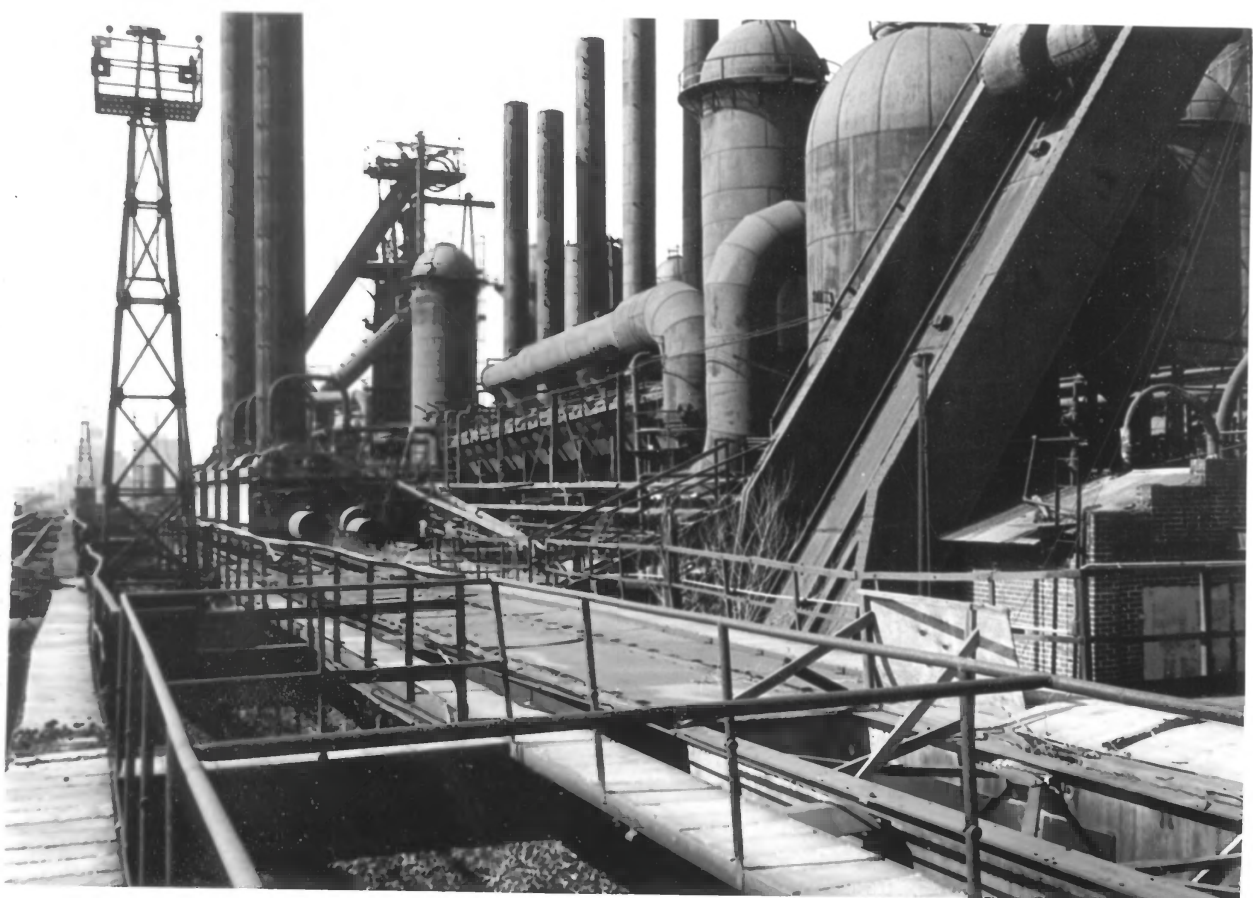
Photo No. 2

By: George R. Adams, AASLH

Neg. at: HSS, HCRS

Date: February 1978

View: Detail of furnace Number one.



Sloss Blast Furnaces
1st Ave. at 32d Street
Birmingham, Ala.

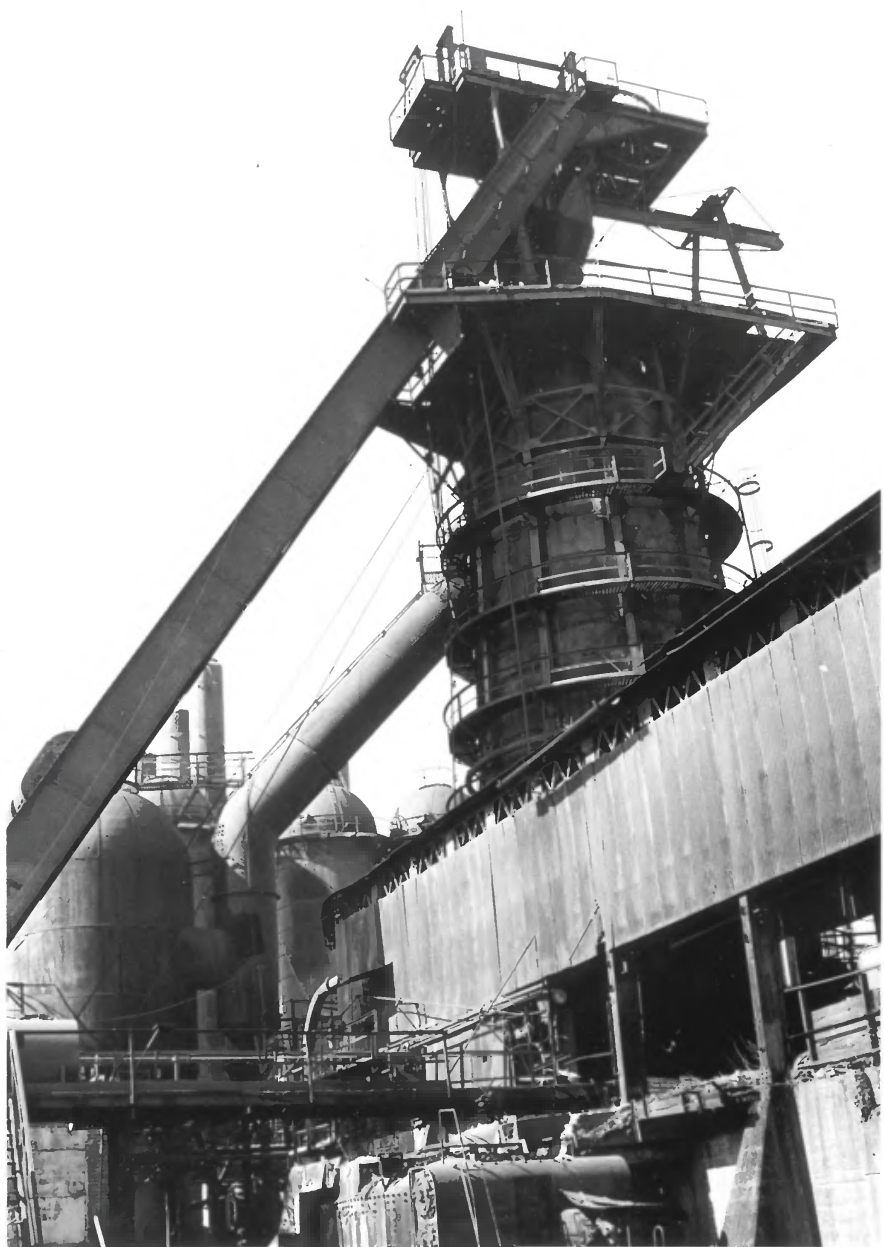
Photo No. 6

By: George R. Adams, AASLH

Neg. at: HSS, HCRS

Date: February 1978

**View: From southeast, showing from
right to left, the number one furnace
base and the number two furnace.**



Sloss Blast Furnaces
1st Ave. at 32d Street
Birmingham, Ala.

Photo No. 5

By: George R. Adams, AASLH

Neg. at: HSS, HCRS

Date: February 1978

View: From southeast, showing number
one furnace and portion of east
Casting Shed.