



Pacific Coast Biscuit Company and Factory  
Portland, Multnomah County, Oregon

Heritage Investment Corporation Photo  
123 NW Second Avenue #200  
Portland, Oregon 97209

Photo, July 1997

Looking SE at W and N elevations

Photo 1 of 15



Pacific Coast Biscuit Company and Factory  
Portland, Multnomah County, Oregon

Heritage Investment Corporation Photo  
123 NW Second Avenue #200  
Portland, Oregon 97209

Photo, July 1997

Looking E at W elevation

Photo 2 of 15



Pacific Coast Biscuit Company and Factory  
Portland, Multnomah County, Oregon

Heritage Investment Corporation Photo  
123 NW Second Avenue #200  
Portland, Oregon 97209

Photo, July 1997  
Looking NE at W and S elevations  
Photo 3 of 15



Pacific Coast Biscuit Company and Factory  
Portland, Multnomah County, Oregon

Heritage Investment Corporation Photo  
123 NW Second Avenue #200  
Portland, Oregon 97209

Photo, July 1997  
Looking NE at W and S elevations  
Photo 4 of 15





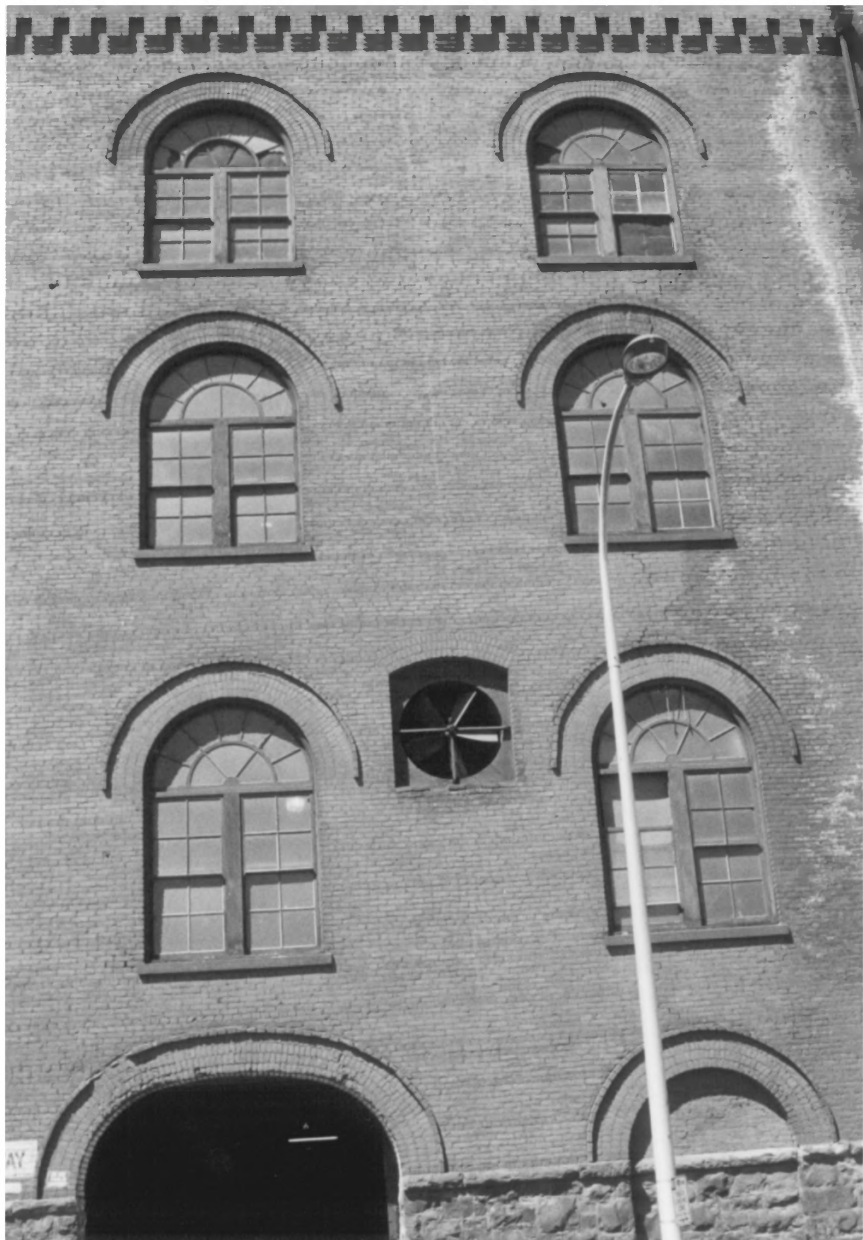
Pacific Coast Biscuit Company and Factory  
Portland, Multnomah County, Oregon

Heritage Investment Corporation Photo  
123 NW Second Avenue #200  
Portland, Oregon 97209

Photo, July 1997

Exterior detail

Photo 5 of 15



Pacific Coast Biscuit Company and Factory  
Portland, Multnomah County, Oregon

Heritage Investment Corporation Photo  
123 NW Second Avenue #200  
Portland, Oregon 97209

Photo, July 1997

Exterior detail

Photo 6 of 15



Pacific Coast Biscuit Company and Factory  
Portland, Multnomah County, Oregon

Heritage Investment Corporation Photo  
123 NW Second Avenue #200  
Portland, Oregon 97209

Photo, July 1997

Exterior detail

Photo 7 of 15



Pacific Coast Biscuit Company and Factory  
Portland, Multnomah County, Oregon

Heritage Investment Corporation Photo  
123 NW Second Avenue #200  
Portland, Oregon 97209

Photo, July 1997  
Basement general view  
Photo 8 of 15





Pacific Coast Biscuit Company and Factory  
Portland, Multnomah County, Oregon

Heritage Investment Corporation Photo  
123 NW Second Avenue #200  
Portland, Oregon 97209

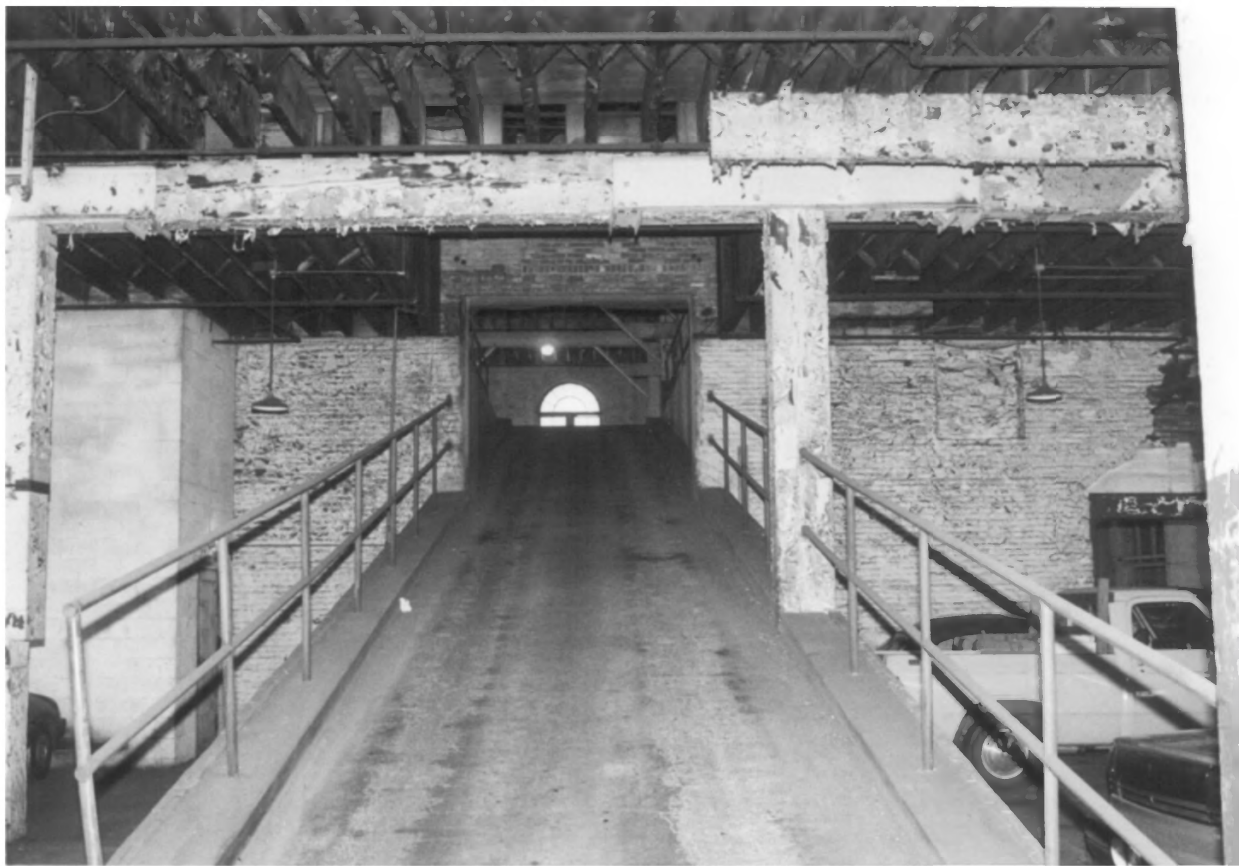
Photo, July 1997  
First floor general view  
Photo 9 of 15



Pacific Coast Biscuit Company and Factory  
Portland, Multnomah County, Oregon

Heritage Investment Corporation Photo  
123 NW Second Avenue #200  
Portland, Oregon 97209

Photo, July 1997  
First floor general view  
Photo 10 of 15



Pacific Coast Biscuit Company and Factory  
Portland, Multnomah County, Oregon

Heritage Investment Corporation Photo  
123 NW Second Avenue #200  
Portland, Oregon 97209

Photo, July 1997

Auto ramp

Photo 11 of 15



Pacific Coast Biscuit Company and Factory  
Portland, Multnomah County, Oregon

Heritage Investment Corporation Photo  
123 NW Second Avenue #200  
Portland, Oregon 97209

Photo, July 1997  
Truss work first floor  
Photo 12 of 15





Pacific Coast Biscuit Company and Factory  
Portland, Multnomah County, Oregon

Heritage Investment Corporation Photo  
123 NW Second Avenue #200  
Portland, Oregon 97209

Photo, July 1997  
Upper floor auto ramp  
Photo 13 of 15



Pacific Coast Biscuit Company and Factory  
Portland, Multnomah County, Oregon

Heritage Investment Corporation Photo  
123 NW Second Avenue #200  
Portland, Oregon 97209

Photo, July 1997  
Upper floor typical view  
Photo 14 of 15



Pacific Coast Biscuit Company and Factory  
Portland, Multnomah County, Oregon

Heritage Investment Corporation Photo  
123 NW Second Avenue #200  
Portland, Oregon 97209

Photo, July 1997

Typical truss work upper floors

Photo 15 of 15