



211 Seventh Avenue North

Nashville Davidson County, TN

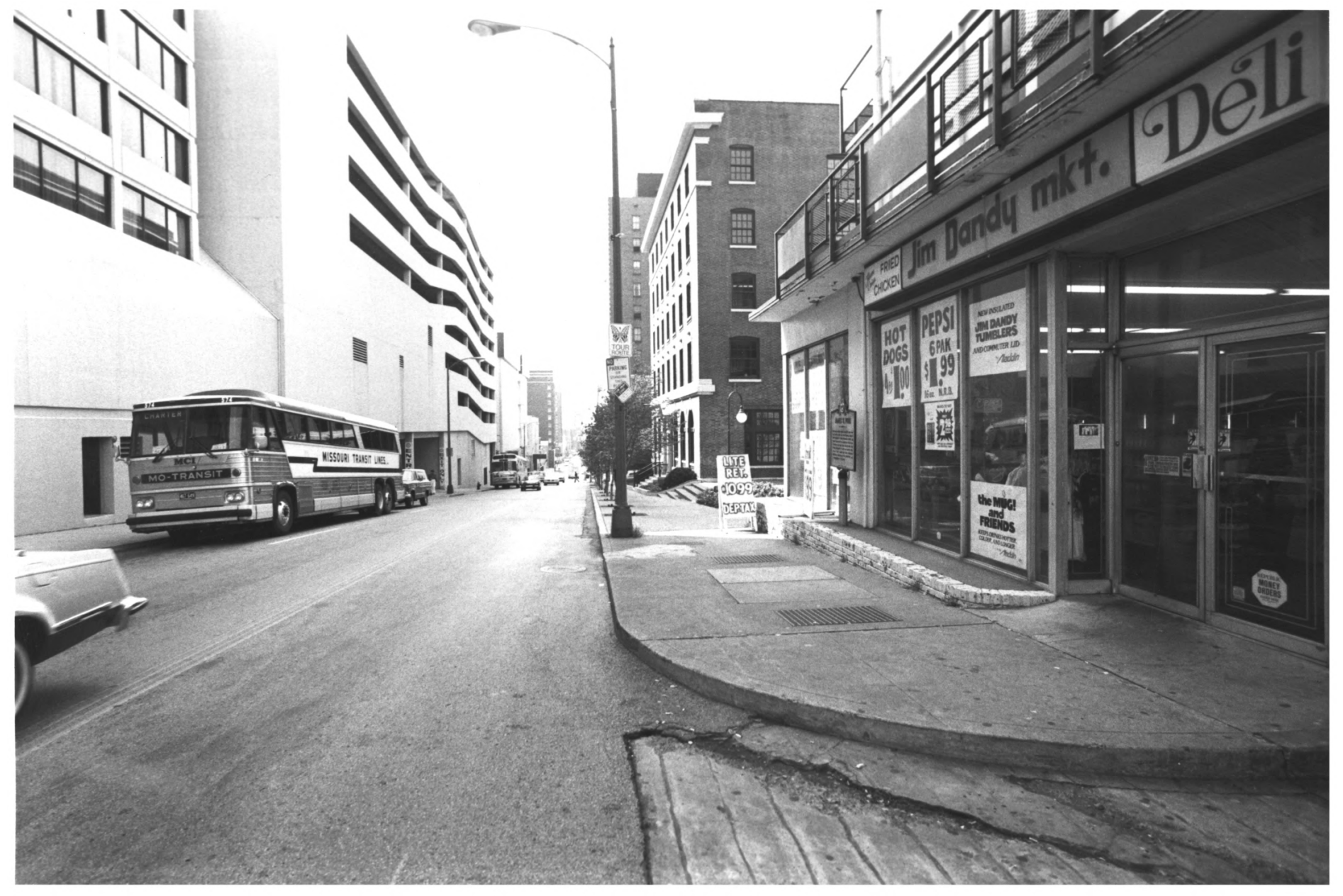
Photographed by Larry Mullican

Date: August 2, 1982

10130

Seventh Avenue North,

facing north



Deli

Jim Dandy mkt.

FRIED CHICKEN

HOT DOGS \$1.00

PEPSI 6PAK \$1.99

NEW INSULATED JIM DANDY TUMBLERS AND COMPACT LID

the MPCI and FRIENDS

LITE REC. 1099 DEPTAN

TOUR

MISSOURI TRANSIT LINES

MO-TRANSIT

YWCA Building

211 Seventh Avenue North

Nashville, Davidson County, TN

Photographed by Larry Mullican

Date: August 2, 1982

2 of 30

Seventh Avenue North,  
facing south



YWCA Building

211 Seventh Avenue North

Nashville Davidson County, TN

Photographed by Larry Mullican

Date: August 2, 1982

3 of 30

East and South Elevations,

facing northwest.



YWCA Building

211 Seventh Avenue North

Nashville, Davidson County, TN

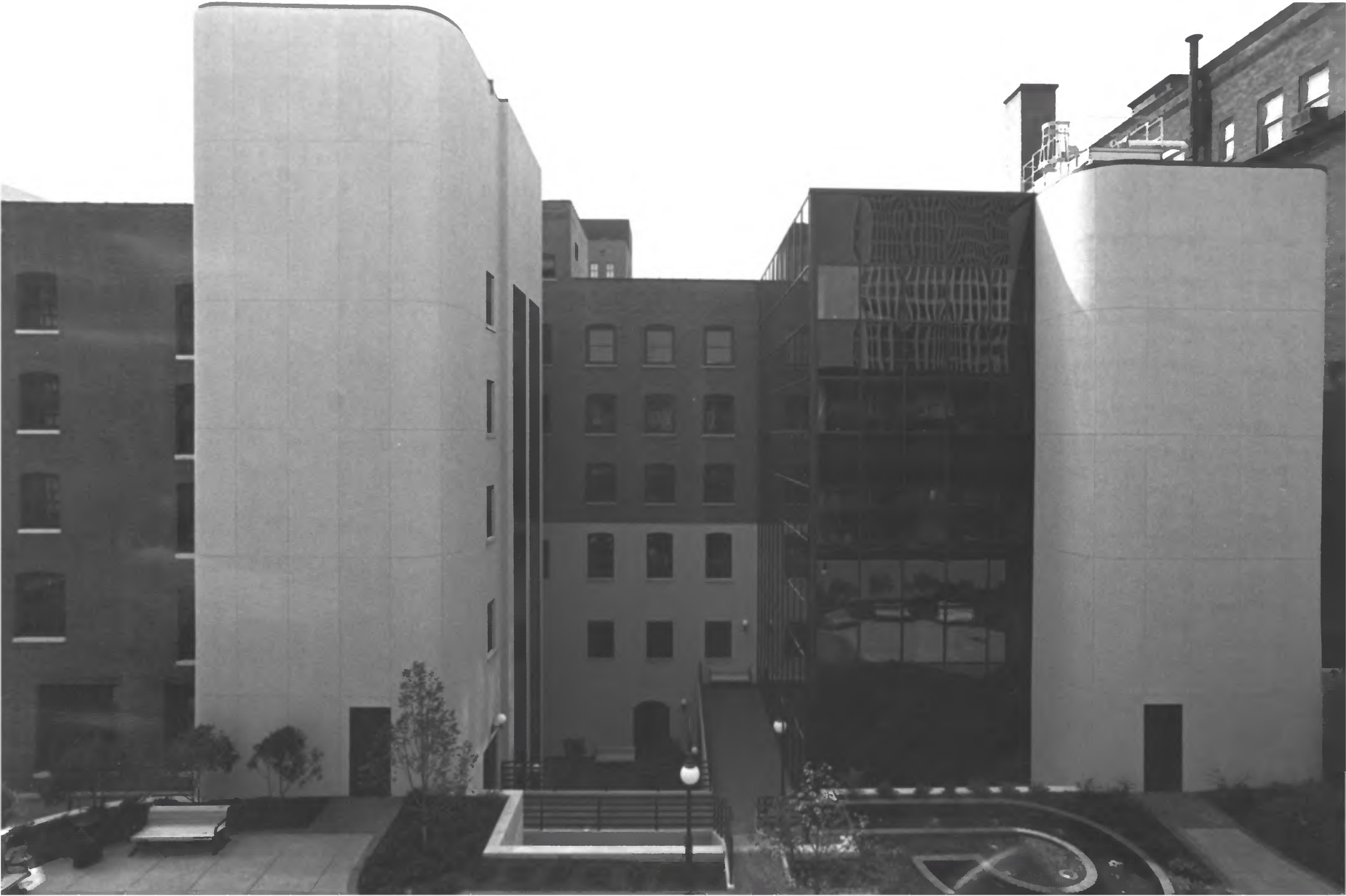
Photographed by Larry Mullican

Date: August 2, 1982

4 of 30

East Elevation, facing west





YWCA Building

211 Seventh Avenue North

Nashville, Davidson County, TN

Photographed by Larry Mullican

Date: August 2, 1982

5 of 30

North Elevation, facing south



YWCA Building

211 Seventh Avenue North

Nashville, Davidson County, TN

Photographed by Larry Mullican

Date: August 2, 1982

6 of 30

Site details to north of  
building, facing south



YWCA Building

211 Seventh Avenue North

Nashville, Davidson County, TN

Photographed by Larry Mullican

Date: August 2, 1982

7 of 30

Site details, facing southeast



YWCA Building

211 Seventh Avenue North

Nashville, Davidson County, TN

Photographed by Larry Mullican

Date: August 2, 1982

8 of 30

Entrance at new stair tower,  
east elevation, facing west





YWCA Building

211 Seventh Avenue North

Nashville, Davidson County, TN

Photographed by Larry Mullican

Date: August 2, 1982

9 of 30

Lower floors, east elevation,  
facing west



YWCA Building  
211 Seventh Avenue North  
Nashville, Davidson County, TN  
Photographed by Larry Mullican  
Date: August 2, 1982

10 of 30

Basement windows, east elevation,  
facing west

WEN'S CHRISTMAN AS



YWCA Building

211 Seventh Avenue North  
Nashville, Davidson County, TN

Photographed by Larry Mullican

Date: August 2, 1982

11 of 30

Entrance doors, east elevation,  
facing west

YOUNG



YWCA Building

211 Seventh Avenue North

Nashville Davidson County, TN

Photographed by Larry Mullican

Date: August 2, 1982

12 OT 30

First floor windows,  
East elevation, facing west





CHRISTIAN ASSOCIAT



**YWCA Building**

**211 Seventh Avenue North**

**Nashville, Davidson County, TN**

**Photographed by Larry Mullican**

**Date: August 2, 1982**

**13 of 30**

**Second and third floor windows,  
east elevation, facing west**



YWCA Building  
211 Seventh Avenue North  
Nashville, Davidson County, TN  
Photographed by Larry Mullican  
Date: August 2, 1982

14 of 30  
Upper and top floor windows,  
east elevation, facing west



YWCA Building

211 Seventh Avenue North

Nashville, Davidson County, TN

Photographed by Larry Mullican

Date: August 2, 1982

15 of 30

First floor window, north  
elevation, facing south



YWCA Building

211 Seventh Avenue North

Nashville, Davidson County, TN

Photographed by Larry Mullican

Date: August 2, 1982

16 of 30

Typical upper floor windows,  
north elevation, facing south





YWCA Building

211 Seventh Avenue North

Nashville, Davidson County, TN

Photographed by Larry Mullican

Date: August 2, 1982

17 of 30

South elevation, facing north



YWCA Building

211 Seventh Avenue North

Nashville, Davidson County, TN

Photographed by Larry Mulligan

Date: August 2, 1982

18 of 30

Typical windows, south  
elevation, facing north



YWCA Building

211 Seventh Avenue North

Nashville, Davidson County, TN

Photographed by Larry Mulligan

Date: August 2, 1982

19 of 30

Space 120, Receptionist,  
facing west



YWCA Building

211 Seventh Avenue North

Nashville, Davidson County, TN

Photographed by Larry Mullican

Date: August 2, 1982

20 of 30

Space 120, Receptionist,  
facing east





YWCA Building

211 Seventh Avenue North

Nashville, Davidson County, TN

Photographed by Larry Mullican

Date: August 2, 1982

21 of 30

Arch detail, space 120,  
receptionist, facing east



YWCA Building

211 Seventh Avenue North

Nashville, Davidson County, TN

Photographed by Larry Mullican

Date: August 2, 1982

22 of 30

Space 102,

Lobby, facing north



YWCA Building

211 Seventh Avenue North

Nashville, Davidson County, TN

Photographed by Larry Mullican

Date: August 2, 1982

23 of 30

Space 122, Library,  
facing north



YWCA Building  
211 Seventh Avenue North  
Nashville Davidson County, TN  
Photographed by Larry Mullican  
Date: August 2, 1982

24 of 30  
Space 123, Conference,  
facing north





YWCA Building

211 Seventh Avenue North

Nashville, Davidson County, TN

Photographed by Larry Mullican

Date: August 2, 1982

25 of 30

Space 132, Vestibule,  
facing east



YWCA Building  
211 Seventh Avenue North  
Nashville, Davidson County, TN  
Photographed by Larry Mullican  
Date: August 2, 1982

26 of 30  

---

Space 206, Stair,  
facing south



YWCA Building

211 Seventh Avenue North

Nashville, Davidson County, TN

Photographed by Larry Mullican

Date: August 2, 1982

27 of 30

Space 142, Secretarial,

facing east



YWCA Building

211 Seventh Avenue North

Nashville, Davidson County, TN

Photographed by Larry Mullican

Date: August 2, 1982

28 of 30

Space 130, Office,  
facing south





**YWCA Building**  
**211 Seventh Avenue North**  
**Nashville, Davidson County, TN**  
**Photographed by Larry Mullican**  
**Date: August 2, 1982**

**29 of 30**  
**Space 328, Conference,**  
**facing north**



YWCA Building  
211 Seventh Avenue North  
Nashville, Davidson County, TN  
Photographed by Larry Mulligan  
Date: August 2, 1982

30 of 30  
Space 341, Kitchen,  
facing north