

2812

#4 RECEIVED

CREOLE AND GULF COAST COTTAGES IN BALDWIN COUNTY

NOV 8 1988

(Thematic Group)

NATIONAL REGISTER

Owner: Bucky Nordmann
P. O. Box 872
Daphne, Al. 36526

Historic Names: McMillan House
Captain O'Neal House

Common Name: Nordmann House

Location: 1404 Captain O'Neal Avenue, Daphne

Verbal Boundary Description:

Begin at a point 220 feet south of the southeast corner of Captain O'Neal Avenue and College Avenue, thence proceed east 137 feet to a point, thence south 169.07 feet to a point, thence west 136 feet to a point and thence north along the east side of Captain O'Neal Avenue 150.47 feet to the point of beginning.

Acreage: .5

UTM: 16/412/605/3385/200

Date of Construction: 1835

Architect/Builder: Unknown

Statement of Significance

Criterion C-Architecture:

The McMillan-O'Neal-Nordmann House is significant as the oldest Gulf Coast Cottage in Baldwin County. The slight eave kick-off over the recessed front porch, which acts as a rain porch, is significant as a further local adjustment to climatic conditions along the Gulf Coast.

Integrity:

The McMillan-O'Neal-Nordmann House retains its integrity of location, materials and design. The only significant exterior changes are the back porch, filled and covered with asbestos siding during the 1950s, and the leaded glass transom and side-lights added in 1985.

Interior integrity is good. The mantels were replaced with Victorian examples and upstairs sheetrocked by the present owner in the early 1980s. The house retains its original plan. Floors are original throughout.

Description:

The McMillan-O'Neal-Nordmann House is a 5x3 bay, clapboarded, 1½ story Gulf Coast Cottage resting on brick piers. It has a gable roof to the sides and a recessed porch, with square posts and balusters, covers the full facade. The front eave kicks off slightly and overhangs the porch by about two feet. This has diagonal braces and acts as a rain porch. This feature may be a precursor to the full blown rain porches

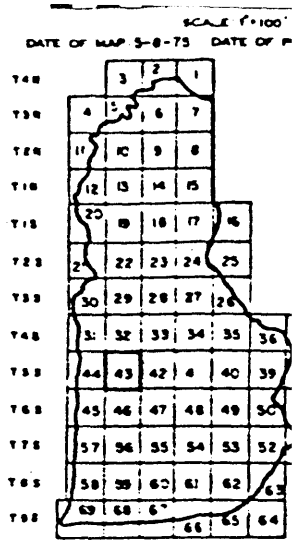
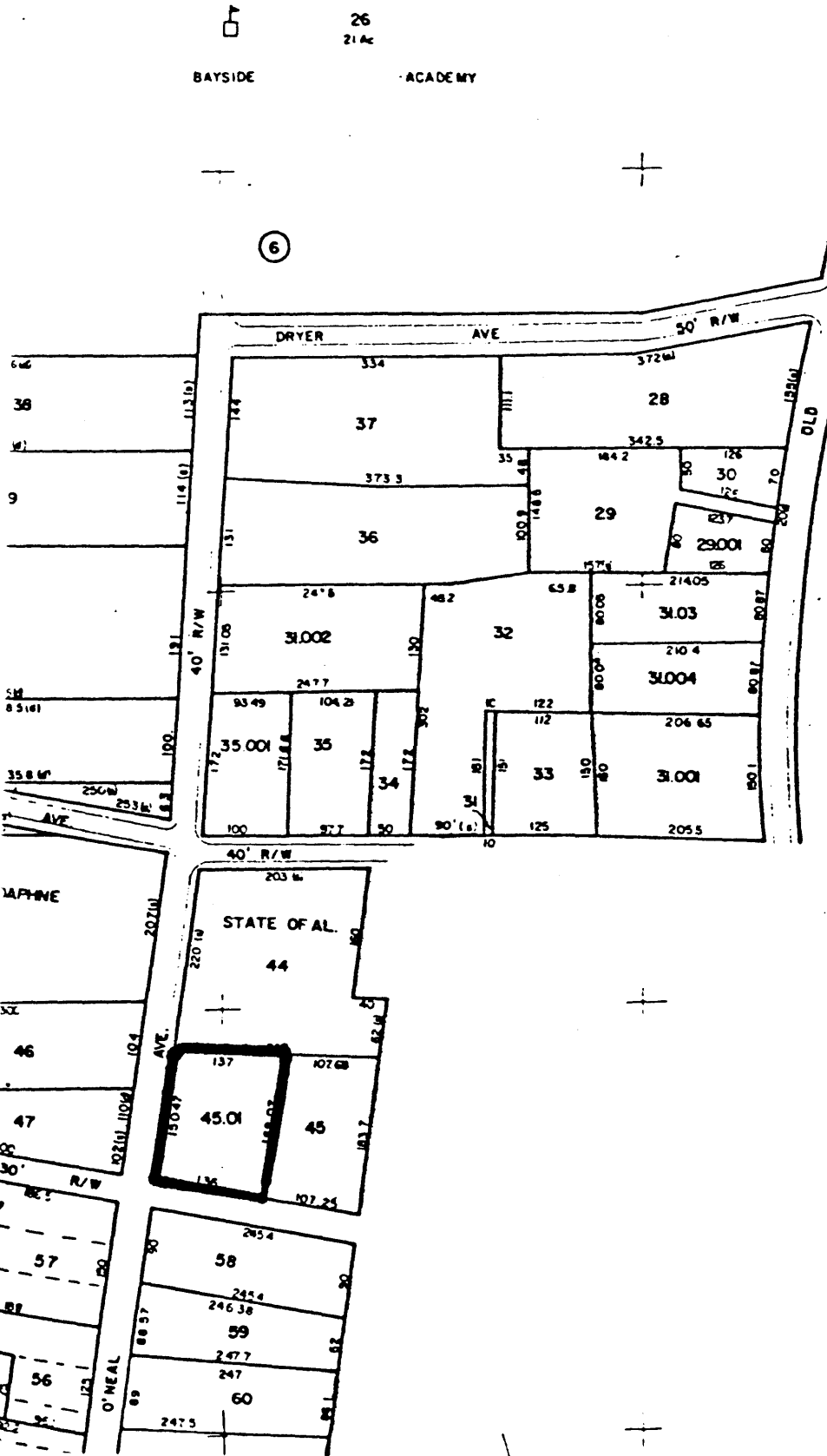
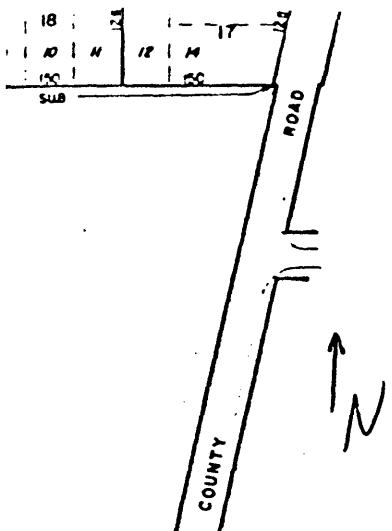
which became popular along the bay later in the 19th century. The central entrance is flanked by a pair of 6/6 windows with shutters. The four panel front door has leaded glass sidelights and transom, added in 1985. Two gabled dormers each feature a 6/6 window flanked by flat, vertical boards. The sides of the dormers are clapboarded. The back porch was filled during the 1950s and covered with asbestos siding. This shed roof appendage features six 8/8 windows and a single door across the rear. The house has two exterior end chimneys of brick with corbeled caps. The front steps are concrete with flanking concrete and rock newels, all constructed in 1921.

The McMillan-O'Neal-Nordmann House has a central hall with two rooms either side. There is a fireplace in each front room. Interior features are plain, simple window surrounds and baseboards and four panel wooden doors. At the rear of the central hall are a pair of boxed columns with a screen wall (of half height panels attaching it to side walls) either side and freize above. The back porch leads to a narrow staircase which runs back towards the facade to the half story. The upstairs features a garrated ceiling, two bedrooms and a bath. Original hardwood floors are throughout.

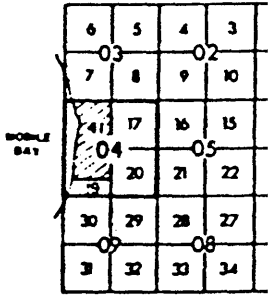
Historical Summary:

In 1835 William McMillan purchased over two hundred acres on the Eastern Shore of Mobile Bay and shortly thereafter constructed a house on the high bluffs. McMillan's house was part of a small community which would soon be called Daphne. Daphne was a popular summer retreat for Mobilians and became the Baldwin County seat in 1867. McMillan died in 1869 and his widow sold the house and thirty acres of the land to James O'Neal in 1872. Indeed, the house is most closely associated with O'Neal who was a bayboat captain and an extensive land owner in Daphne. The courthouse was located just north of O'Neal's house and he and his son rented cottages (all long since destroyed) and a stable to visitors. The present owner acquired the house in 1979. Despite a number of previous owners, the house is popularly referred to as the Captain O'Neal House.

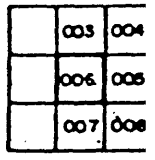
McMillan-O'Neal-Nordmann House #4
 Daphne
 Baldwin County, Alabama
 Scale 1"=200'



TOWNSHIP LOC
 (INDEX TO 1"=400' & 1"=200')



SUB-SHEET II



LEGEND

- STATE LINE ----- AREA (F)
- COUNTY LINE ----- AREA (F)
- CORPORATION LINE ----- DIMENSE
- DISTRICT LINE ----- DIMENSE
- ROAD R/W ===== WATER
- TRAVELED ROAD ===== INTERST
- RAILROAD R/W ===== U.S. HIGH
- PROPERTY LINE ----- STATE H
- LAND MARK ----- COUNTY
- INTERIOR TRACT LINE OR ORIGINAL TRACT LINE ----- MAJOR T LINES
- SUBDIVISION LOT NUMBER 29 ----- SECTION
- PARCEL NUMBER 15 ----- STATE H COOROP
- BLOCK LINT. (WHERE APPLICABLE) -----
- OWNERSHIP MAP BLOCK (WHERE APPLICABLE) (2)
- CHURCHES SCHOOLS, CEMETERIES, AIRPORTS, GOVERNMENT LANDS, ETC. BY NAME

REVISIONS

DATE	BY	DATE	BY	CHANGES OR
9-10-75	J.F.E.	3-26-76	J.C.	
12-8-76	M.A.M.			
4-22-77	R.P.C.			
5-5-77	J.E.M.			
6-24-77	J.C.			

GRANT SECTIONS 4
 TOWN 5 SOUTH, RANGE