



Presque Isle National Bank

422 Main Street

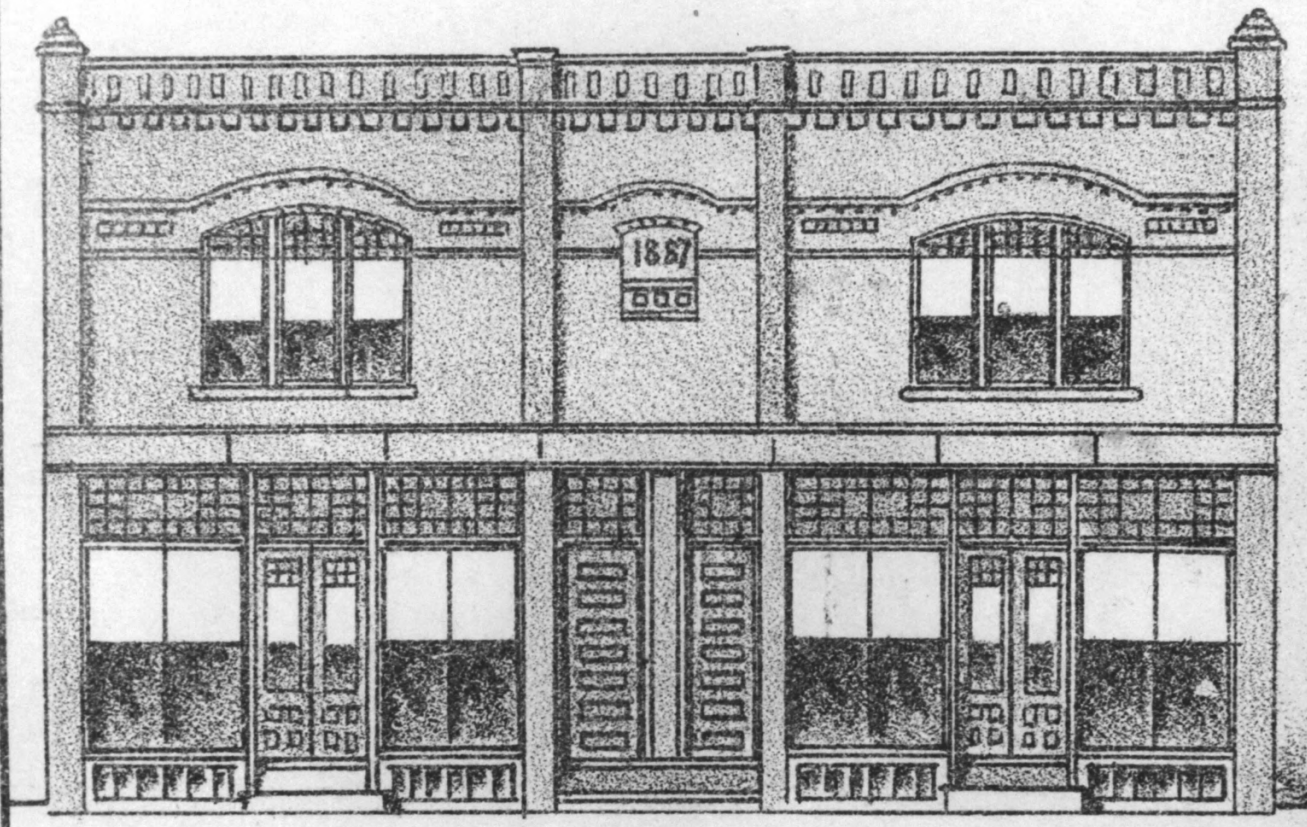
Presque Isle, Aroostook, Maine

Roger G. Reed 10/85

Me. Historic Preservation Comm.

View from NW

(over)



PRESQUE ISLE NATIONAL BANK

SKILLINGS & HOWARD PUBLISHERS

This was taken from "map" photo in historical society.  
Note elevation of street & glass roof