



Brandon Village Historic District

Brandon, Vermont

credit: Jane A. McLuckie

Rutland Co

date: April 1976

Negative filed at Vermont Division for Historic
Preservation

Park Street to Central Square, looking west;

L to R: #S 34, 33, 32, 31

Photograph 31 of 55

DEC 22 1976

APR 30 1976

VERMONT DIVISION FOR HISTORIC PRESERVATION

CO. Rutland TOWN Brandon DATE 4/76

SUBJECT Park St to Center Square VIEW W

FILE # 76-A-32 CREDIT Jane McLuckie

PROPERTY OF THE NATIONAL REGISTER

32



Brandon Village Historic District

Brandon, Vermont

credit: Jane A. McLuckie

Rutland

date: December 1975

Negative filed at Vermont Division for Historic
Preservation

Park Street, looking northwes ;

L to R: #S 54, 56, 60

Photograph 2 of 55

DEC 22 1976

APR 30 1976

VERMONT DIVISION FOR HISTORIC PRESERVATION

CO. _____ TOWN _____ DATE _____

SUBJECT 7 VIEW _____

FILE # 75-A-73 CREDIT _____

PROPERTY OF THE NATIONAL REGISTER



Brandon Village Historic District

Brandon, Vermont

credit: Jane A. McLuckie

Rutland Co

date: December 1975

Negative filed at Vermont Division for Historic
Preservation

Park Street, looking southeast;

L to R: #S 20, 21, 22, 23

Photograph 3 of 5

DEC 24 1976

APR 30 1976

75 A 72-21

VERMONT DIVISION OF HISTORIC SITES

COUNTY *Rutland* TOWN *Brandon*

SUBJECT *Park Street*

DATE *12/75* FILE # *75-A-72*

CREDIT *JANE A. McLUCKIE*

VIEW *SE*

PROPERTY OF THE NATIONAL REGISTER



Brandon Village Historic District

Brandon, Vermont

credit: Jane A. McLuckie

date: December 1975

Negative filed at Vermont Division for Historic
Preservation

Franklin Streetscape, looking northwest to
Brandon Inn

Photograph # 4 of 55

Rutland Co

APR 30 1976

DEC 24 1976

75 A73-3

VERMONT DIVISION OF HISTORIC SITES

COUNTY *Rutland* TOWN *Brandon*

SUBJECT *Franklin Streetscape to
Brandon Inn*

DATE *12/75* FILE # *75-A-73*

CREDIT *JANE A. McLUCKIE*

VIEW *nw*

PROPERTY OF THE NATIONAL REGISTER



Brandon Village Historic District

Brandon, Vermont

credit: Jane A. McLuckie

date: December 1975

Negative filed at Vermont Division for Historic

Preservation
Carver Streetscape to Central Square, looking
Northwest

Photograph 5 of 55

APR 30 1976

DEC 24 1976

75 A 73-70

VERMONT DIVISION OF HISTORIC SITES

COUNTY Rutland TOWN Brandon

SUBJECT Carver Street to Central Sq.

DATE 12/75 FILE # 75-A-73

CREDIT JANE A. McLUCKIE

VIEW NW

PROPERTY OF THE NATIONAL REGISTER



Brandon Village Historic District

Brandon, Vermont

credit: Jane A. McLuckie

Rutland Co

date: April 1976

Negative filed at Vermont Division for Historic
Preservation

Central Square at Carver Street, viewed east;

L to R: #65, United Methodist Church (106),

#s 105, 104, 103

Photograph # 6 of 55

DEC 28 1976

APR 30 1976

VERMONT DIVISION FOR HISTORIC PRESERVATION

CO. Rutland TOWN Brandon DATE 4/76

SUBJECT United Methodist Church VIEW S. E.

FILE # 76-A-33 CREDIT Jane McLuckie

PROPERTY OF THE NATIONAL REGISTER

33



GRAND
UNION

BANKEN CEN

Shoppers

7
Brandon Village Historic District

Brandon, Vermont

credit: Jane A. McLuckie

date: December 1975

Negative filed at Vermont Division for Historic
Preservation

Central Square, along Park Street, viewed north

Photograph #7 of 55

Rutland Co

DEC 22 1975

APR 30 1976

75 A 73-17

VERMONT DIVISION OF HISTORIC SITES

COUNTY *Rutland* TOWN *Brandon*

SUBJECT *Central Sq Commercial Bldg, Brandon*

DATE *12/75* FILE # *75-A-73* *clmn*

CREDIT *JANE A. MCLUCKIE*

VIEW *N*

PROPERTY OF THE NATIONAL REGISTER



Brandon Village Historic District

Brandon, Vermont

credit: Jane A. McLuckie

date: December 1975

Negative filed at Vermont Division for Historic
Preservation

7 Union Street (#145), 5 Union Street (#144),
viewed northwest

Photograph 8 of 55

APR 30 1976

DEC 22 1976

VERMONT DIVISION FOR HISTORIC PRESERVATION

CC. RUTLAND TOWN BRANDON DATE 12/75
SUBJECT 7, 5 UNION ST VIEW NW
FILE # 75-A-73 CREDIT JANE A. McLUCKIE

PROPERTY OF THE NATIONAL REGISTER



Brandon Village Historic District

Brandon, Vermont

credit: Jane A. McLuckie

date: December 1975

Negative filed at Vermont division for Historic
Preservation

Central Square at head of Union Street, view
to northeast

Photograph 9 of 55

Rutland Co

APR 30 1976

DEC 22 1976

75 A 73-18

VERMONT DIVISION OF HISTORIC SITES

COUNTY Rutland TOWN Brandon

SUBJECT Central Square

DATE 12/75 FILE # 75-A-73

CREDIT JANE A. MCLUCKIE

VIEW NE

PROPERTY OF THE NATIONAL REGISTER



Brandon Village Historic District

Brandon, Vermont

credit: Jane A. McLuckie

date: April 1976

Negative filed at Vermont Division for Historic
Preservation

Central Square, view west to Congregational Church
(#196), from bandstand

Photograph 10 of 55

Rutland Co

APR 30 1976

DEC 22 1976

VERMONT DIVISION FOR HISTORIC PRESERVATION

CO. RUTLAND TOWN BRANDON DATE 4/76
SUBJECT GRAND UNION, ETC - FROM BANDSTAND VIEW SW
FILE # 76-A-31 CREDIT JANE MC LUCKIE

PROPERTY OF THE NATIONAL REGISTER

31



Brandon Village Historic District

Brandon, Vermont

credit: Jane A. McLuckie

date: December 1975

Rutland

Negative filed at Vermont Division for Historic
Preservation

Central Square, viewed Northwest to: (L to R)

Brandon National Bank (#156), Lawrence Build-
ing (#155), 1919 Commercial Block (#154)

Photograph # 11 of 55

APR 30 1976

DEC 22 1975

75 A 73-19

VERMONT DIVISION OF HISTORIC SITES

COUNTY Rutland TOWN Brandon

SUBJECT Central Square Commercial

DATE 12/75 FILE # 75-A-43 ledge

CREDIT JANE A. McLUCKIE

VIEW NW

PROPERTY OF THE NATIONAL REGISTER



Brandon Village Historic District
Brandon, Vermont

Credit: Jane McLuckie

Sutton

Date: 4/76

Negative filed at Vermont Division for
Historic Preservation

Smith's Block (#147), view NW

Photograph #12 *of 55*

APR 30 1976

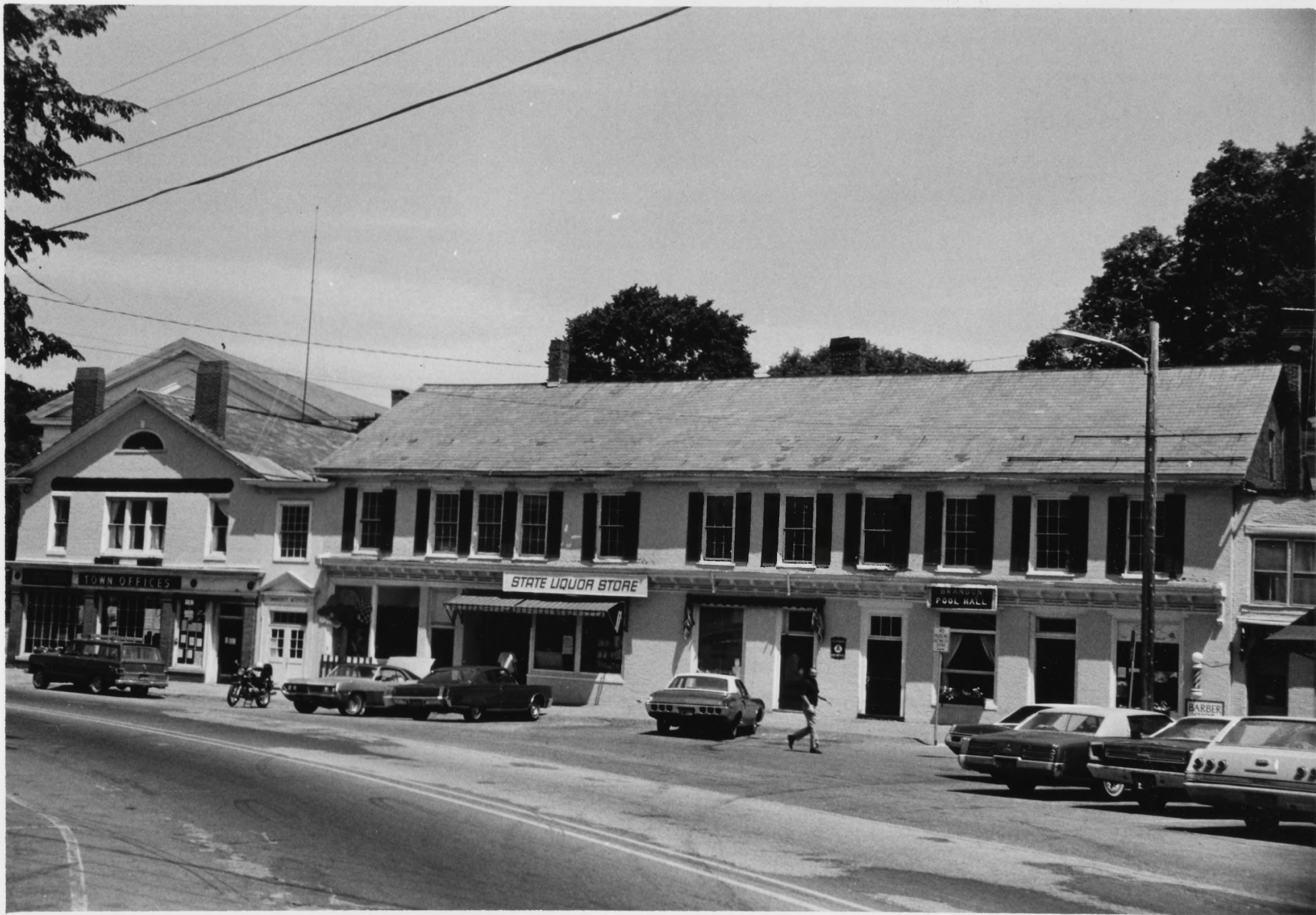
DEC 22 1976

VERMONT DIVISION FOR HISTORIC PRESERVATION

CO. RUTLAND TOWN BRANDON DATE 4/76
SUBJECT SMITH'S BLOCK, CENTER ST VIEW NW
FILE # 76-A-31 CREDIT JANE MCLUCKIE

PROPERTY OF THE NATIONAL ARCHIVES

31



Brandon Village Historic District

Brandon, Vermont

Credit: Kathlyn Hatch

Hutland Co

Date: 6/75

Negative filed at Vermont Division for
Historic Preservation

L to R: Brandon Town offices (#164), Conant
Block (#163), Southwest facade

Photograph #13 of 35

APR 30 1976

DEC 22 1976

75-A-46

PROPERTY OF THE NATIONAL REGISTER



Brandon Village Historic District
Brandon, Vermont

Credit: Jane McLuckie

Rutland

Date: 12/75

Negative filed at Vermont Division for
Historic Preservation

L to R: Brandon Town Hall (#172), Brandon
Fire Station (#171), South facade

Photograph #14 of 55

APR 30 1976

DEC 22 1976

75 A 71 - 2

VERMONT DIVISION OF HISTORIC SITES

COUNTY Rutland TOWN Brandon

SUBJECT Town Hall, Fire House

DATE 12/75 FILE # 75-A-71

CREDIT JANE A. McLUCKIE

VIEW N

PROPERTY OF THE NATIONAL REGISTER



BRANDON FIRE DEPT

Brandon Village Historic District
Brandon, Vermont
Credit: Kathlyn Hatch *Rutland Co*
Date: 8/75
Negative filed at Vermont Division for
Historic Preservation
Brandon Fire Station (#171, South facade
Photograph #15 of 55

APR 30 1976

DEC 22 1976

75 A 53-20

VERMONT DIVISION OF HISTORIC SITES
COUNTY <i>Rutland</i> TOWN <i>Brandon</i>
SUBJECT <i>Fire House</i>
DATE <i>8-75</i> FILE # <i>95-A-55</i>
CREDIT <i>KATHLYN HATCH</i>
VIEW <i>3</i>

PROPERTY OF THE NATIONAL REGISTER



CHAMBERLANDS
SPORTING GOODS

7
19
35

Brandon Village Historic District
Brandon, Vermont *Rutland Co*
Credit: Jane McLuckie
Date: 12/75
Negative filed at Vermont Division for
Historic Preservation
View west along Conant Square to Crescent Park
Photograph #16 of 55

APR 30 1976

DEC 22 1976

75 A 71-3

VERMONT DIVISION OF HISTORIC SITES

COUNTY *Rutland* TOWN *Brandon*

SUBJECT *Conant Square Streetscape*

DATE *12/75* FILE # *75-A-71*

CREDIT *JANE A. McLUCKIE*

VIEW *W*

PROPERTY OF THE NATIONAL REGISTER



Brandon Village Historic District

Brandon, Vermont

Credit: Jane McLuckie *Rutland*

Date: 12/75

Negative filed at Vermont Division for
Historic Preservation

L to R: Conant Marble House (#189), 23 Conant
Square (#188), John Conant House (#187), view
to NE

Photograph #17 of 55

APR 30 1976

DEC 24 1976

75 A 71-7

VERMONT DIVISION OF HISTORIC SITES

COUNTY *Rutland* TOWN *Brandon*

SUBJECT *Conant Square Streetscape*

DATE *12/75* FILE # *75-A-71*

CREDIT **JANE A. McLUCKIE**

VIEW *NE*

PROPERTY OF THE NATIONAL REGISTER



Brandon Village Historic District
Brandon, Vermont
Credit: Jane McLuckie *Rutland Co*
Date: 12/75
Negative filed at Vermont Division for
Historic Preservation
Crescent Park; L to R: 3 Pearl Street (#219),
Thorne House (#220), Brandon Baptist Church
(#225), Stephen A. Douglas House (#230), view
to W
Photograph #18 of 55

DEC 22 1976

APR 30 1976

75A71-10

VERMONT DIVISION OF HISTORIC SITES

COUNTY RUTLAND TOWN BRANDON
CRESCENT SQ. FROM CONANT ST. ENTRANCE
SUBJECT #3 #1 PEARL ST. BAPTIST CHURCH #4 #6
GROVE ST.
DATE 12/75 FILE # 25-A-71
CREDIT JANE A. McLUCKIE
VIEW W.

PROPERTY OF THE NATIONAL REGISTER



Brandon Village Historic District
Brandon, Vermont
Credit: Jane McLuckie *Rutland Co*
Date: 12/75
Negative filed at Vermont Division for
Historic Preservation
Pearl Streetscape, view to North
Photograph #19 of 55

APR 30 1976

DEC 22 1976

75 A 71 - 4

VERMONT DIVISION OF HISTORIC SITES

COUNTY *Rutland* TOWN *Brandon*
SUBJECT *Pearl streetscape from RR crossing to 41+39 Conant Square*
DATE *12/75* FILE # *75-A-41*
CREDIT *JANE A. McLUCKIE*
VIEW *N*

PROPERTY OF THE NATIONAL REGISTER



Brandon Village Historic District

Brandon, Vermont

Credit: Jane McLuckie

Rutland Co

Date: 4/76

Negative filed at Vermont Division for
Historic Preservation

Pearl Street, L to R: Parmenter House (#213),
Mills House (#214), view to SW

Photograph #20 of 55

APR 30 1976

DEC 22 1976

VERMONT DIVISION FOR HISTORIC PRESERVATION

CO. Rutland TOWN Brandon DATE 4/76
SUBJECT 21, 17 Pearl St. VIEW SW
FILE # 76-A-31 CREDIT Jane McLuckie

PROPERTY OF THE NATIONAL REGISTER

31



Brandon Village Historic District

Brandon, Vermont

Credit: Jane McLuckie

Huttons

Date: 12/75

Negative filed at Vermont Division for
Historic Preservation

Champlain Street, viewed east to Crescent Park

Photograph #21 of 55

APR 30 1976

DEC 22 1976

75 A 71-11

VERMONT DIVISION OF HISTORIC SITES

COUNTY RUTLAND TOWN BRANDON

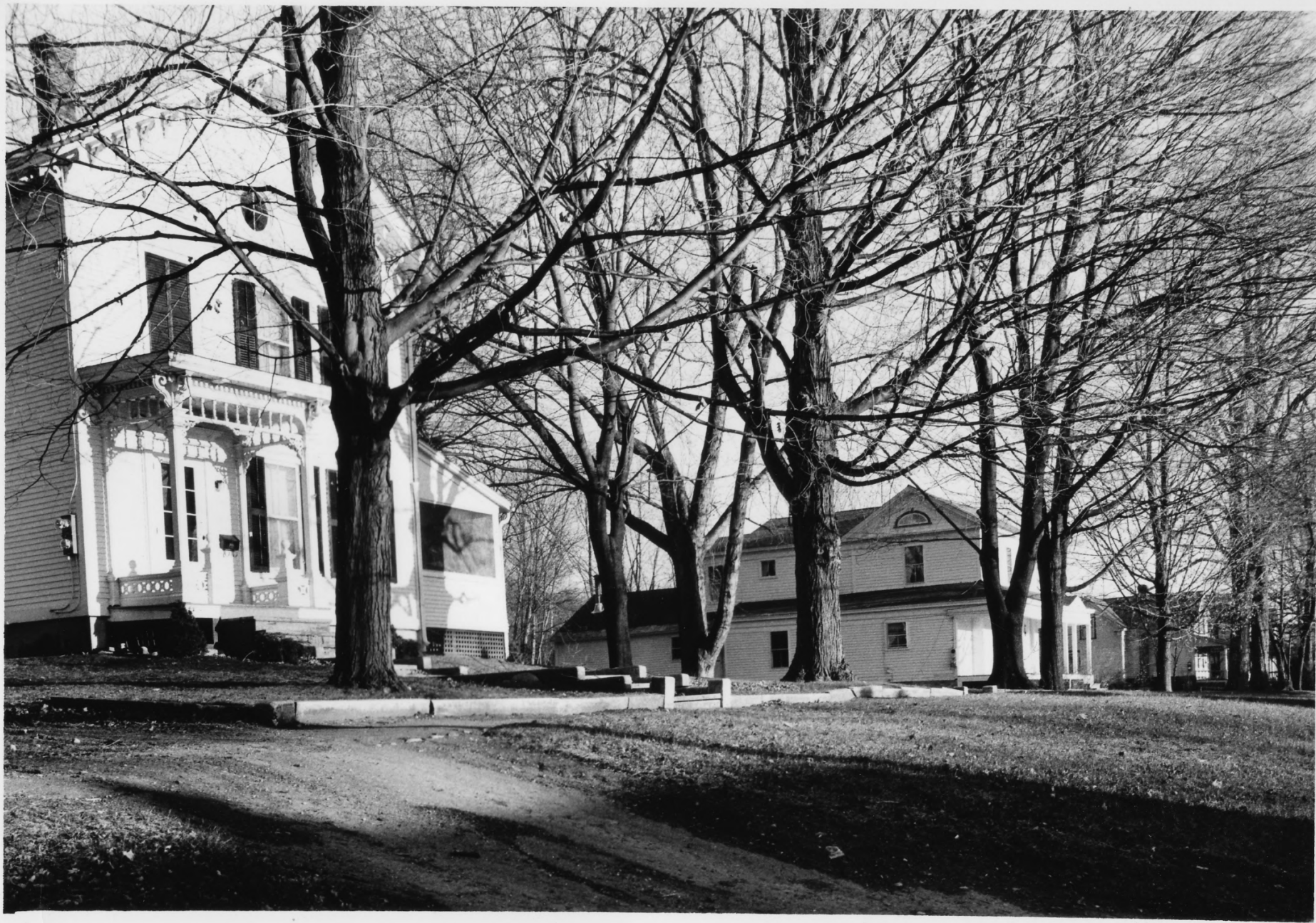
SUBJECT CHAMPLAIN STREETSCAPE TO CRESCENT
SQUARE

DATE 12/75 FILE # 75-A-71

CREDIT JANE A. McLUCKIE

VIEW E

PROPERTY OF THE NATIONAL REGISTER



Brandon Village Historic District
Brandon, Vermont

Credit: Jane McLuckie

Rutland Co

Date: 12/75

Negative filed at Vermont Division for
Historic Preservation

L to R: 25 Grove Street (#241), 19 Grove Str
(#237), 13 Grove Street (#235), view to E

Photograph #22 of 55

APR 30 1976

DEC 22 1976

75 A 77-14

VERMONT DIVISION OF HISTORIC SITES

COUNTY *Rutland* TOWN *Brandon*

SUBJECT *Grove Streetscape*

DATE *12/75* FILE # *75-A-71*

CREDIT *JANE A. McLUCKIE*

VIEW *8*

PROPERTY OF THE NATIONAL REGISTER



Brandon Village Historic District

Brandon, Vermont

Credit: Jane McLuckie

Rutland Co

Date: 4/76

Negative filed at Vermont Division for
Historic Preservation

L to R: 6 Grove Street (#232), 8 Grove Street
(#234), 10 Grove Street (#236), View to NW

Photograph #23 of 55-

APR 30 1976

DEC 22 1976

VERMONT DIVISION FOR HISTORIC PRESERVATION

CO. *Rutland* TOWN *Brandon* DATE *4/76*

SUBJECT *6, 8, 10 Grove St.* VIEW *W*

FILE # *76-A-31* CREDIT *Jane McLuckie*

PROPERTY OF THE NATIONAL REGISTER

13



Brandon Village Historic District
Brandon, Vermont
Credit: Jane McLuckie *Rutland Co*
Date: 12/75
Negative filed at Vermont Division for
Historic Preservation
Philipsen House, 83 Park Street (#1), West
facade
Photograph #24 *ax 53-*

DEC 22 1975

APR 30 1976

75 A 72 - B

VERMONT DIVISION OF HISTORIC SITES

COUNTY *Rutland* TOWN *Brandon*

SUBJECT *83 Park Street*

DATE *12/75* FILE # *75-A-72*

CREDIT *JANE A. McLUCKIE*

VIEW *E.*

PROPERTY OF THE NATIONAL REGISTER



Brandon Village Historic District

Brandon, Vermont

Credit: Jane McLuckie

Rutland Co

Date: 12/75

Negative filed at Vermont Division for
Historic Preservation

Bliss House, 52 Park Street (#9), view to NW

Photograph #25 of 55-

APR 30 1976

DEC 22 1976

VERMONT DIVISION FOR HISTORIC PRESERVATION

CO. Rutland TOWN Brandon DATE 12/75SUBJECT 52 Park St. VIEW NWFILE # 75-A-72 CREDIT JANE A. McLUCKIE

PROPERTY OF THE NATIONAL REGISTER



Brandon Village Historic District
Brandon, Vermont *Rutland Co*
Credit: Jane McLuckie
Date: 4/76
Negative filed at Vermont Division for
Historic Preservation
42 Park Street (#13), view to NE
Photograph #26 *o/s-5-*

APR 30 1976

DEC 22 1976

VERMONT DIVISION FOR HISTORIC PRESERVATION

CO. RUTLAND TOWN BRANDON DATE 4/76
SUBJECT 42 PARK ST. VIEW NE
FILE # 76-A-31 CREDIT JANE McLUCKIE

PROPERTY OF THE NATIONAL REGISTER

31



Brandon Village Historic District
Brandon, Vermont
Credit: Jane McLuckie *Rutland Co.*
Date: 12/75
Negative filed at Vermont Division for
Historic Preservation
49 Park Street (#24), view to SE
Photograph #27 of 55

APR 30 1976

DEC 22 1976

VERMONT DIVISION FOR HISTORIC PRESERVATION

CO. Rutland TOWN Brandon DATE 12/75
SUBJECT 49 Park St. VIEW SE
FILE # 75-A-72 CREDIT JANE A. MCLUCKIE

PROPERTY OF THE NATIONAL REGISTER

75 A 72



VERMONT DIVISION OF HISTORIC SITES

Brandon Village Historic District

Brandon, Vermont

Credit: Kathlyn Hatch

Rutland Co

Date: 6/75

Negative filed at Vermont Division for
Historic Preservation

The Arches, 53 Park Street (#25), view to SE
Photograph #28 of 55

APR 30 1976

DEC 22 1976

6

VERMONT DIVISION FOR HISTORIC PRESERVATION

CO. Rutland TOWN Brandon DATE 6/75

SUBJECT The Arches - 53 Park St. VIEW SE

FILE # 75-A-40 CREDIT Kathlyn Hatch

PROPERTY OF THE NATIONAL REGISTER



Brandon Village Historic District

Brandon, Vermont

Credit: Kathlyn Hatch

Hutton & Co

Date: 6/75

Negative filed at Vermont Division for
Historic Preservation

Thayer House, 69 Park Street (#32), view to S
Photograph #29 of 55

APR 30 1976

DEC 22 1976

3

VERMONT DIVISION FOR HISTORIC PRESERVATION

CO. Puttland TOWN Brandon DATE 6/75
SUBJECT Thayer House 69 Park St VIEW S
FILE # 75-A-45 CREDIT Kathlyn Hatch

PROPERTY OF THE NATIONAL REGISTER



Brandon Village Historic District
Brandon, Vermont

Credit: Jane McLuckie

Rutland Co

Date: 12/75

Negative filed at Vermont Division for Historic
Preservation

23 High Street (#45)

Photograph #30 of 55

APR 30 1976

DEC 28 1976

75A72-18

VERMONT DIVISION OF HISTORIC SITES

COUNTY *Rutland* TOWN *Brandon*

SUBJECT *23 High Street*

DATE *12/75* FILE # *75-A-72*

CREDIT *JANE A. McLUCKIE*

VIEW *4)*

PROPERTY OF THE NATIONAL REGISTER



Brandon Village Historic District
Brandon, Vermont *Rutland Co*
Credit: Jane McLuckie
Date: 12/75
Negative filed at Vermont Division for
Historic Preservation
L to R: 24 Franklin Street (#56), 26 Franklin
Street (#55), view to N
Photograph #31 *of 55*

APR 30 1976

DEC 22 1976

VERMONT DIVISION FOR HISTORIC PRESERVATION

CO. *Rutland* TOWN *Brandon* DATE *12/75*
SUBJECT *Franklin St. to Brandon* VIEW *N. W.*
15-A-73 CREDIT: *JANE A. McLUCKIE*

PROPERTY OF THE NATIONAL REGISTER



SPEED
25
AHEAD

Brandon Village Historic District

Brandon, Vermont

Credit: Jane McLuckie

Date: 4/76

Sutland C

Negative filed at Vermont Division for
Historic Preservation

L to R: Meacham House, 14 Franklin Street (#61)
Reynolds House, 16 Franklin Street, (#60),
view to NW

Photograph #32 *of 55*

APR 30 1976

DEC 22 1976

VERMONT DIVISION FOR HISTORIC PRESERVATION

CO. Sutland TOWN Brandon DATE 4/76

SUBJECT 14+16 Franklin St. (Reynolds #) VIEW W

FILE # 26-1-32 CREDIT Jane McLuckie

PROPERTY OF THE NATIONAL REGISTER

32



Brandon Village Historic District

Brandon, Vermont

Rutland Co.

Credit: Kathlyn Hatch

Date: 6/75

Negative filed at Vermont Division for
Historic Preservation

Parmenter House, 10 Franklin Street (#63),
view to NW

Photograph #33 of 55-

APR 30 1976

DEC 22 1976

3

VERMONT DIVISION FOR HISTORIC PRESERVATION

CO. Rutland TOWN Brandon DATE 6/75

SUBJECT Parmenter House 10 Franklin VIEW NW

FILE # 75-A-45 CREDIT K. Hatch

PROPERTY OF THE NATIONAL REGISTER



Brandon Village Historic District

Brandon, Vermont

Credit: Kathlyn Hatch

Date: 6/75

Negative filed at Vermont Division for
Historic Preservation

Brandon Library (#64), view to NE

Photograph #34 *up 5-5*

Rutland Co

APR 30 1976

DEC 22 1976

View to NE

75-B-24-#8

VERMONT DIVISION FOR HISTORIC PRESERVATION

CO. Rutland TOWN Brandon DATE 6/75
SUBJECT Brandon Library VIEW NE
FILE # 75-A-76 CREDIT K. Hatch

PROPERTY OF THE NATIONAL REGISTER



VERMONT DIVISION OF HISTORIC SITES

Brandon Village Historic District
Brandon, Vermont *Rutland Co.*
Credit: Kathlyn Hatch
Date: 6/75
Negative filed at Vermont Division for
Historic Preservation
13-15 Franklin Street (#71), View to S
Photograph #35 of 55-

APR 30 1976

DEC 22 1976

3

VERMONT DIVISION FOR HISTORIC PRESERVATION

CO. _____ TOWN _____ DATE _____

SUBJECT _____ VIEW _____

FILE # 75-A-45 CREDIT _____

PROPERTY OF THE NATIONAL REGISTER



Brandon Village Historic District
Brandon, Vermont

Credit: Jane McLuckie

Rutland Co.

Date: 12/75

Negative filed at Vermont Division for
Historic Preservation

31 Franklin Street (#78), view to SE

Photograph #36 of 55

APR 30 1976

DEC 11 1975

VERMONT DIVISION FOR HISTORIC PRESERVATION

CO. Rutland TOWN BRANDON DATE 12/75
SUBJECT 31 FRANKLIN ST. VIEW SE
FILE # 75-A-93 CREDIT JANE A. McLUCKIE

PROPERTY OF THE NATIONAL REGISTER



VERMONT DIVISION OF HISTORIC SITES

Brandon Village Historic District

Brandon, Vermont

Rutland Co.

Credit: Kathlyn Hatch

Date: 6/75

Negative filed at Vermont Division for
Historic Preservation

8 Carver Street (#103), SW facade

Photograph #37 of 55

APR 30 1976

DEC 22 1976

S.W. facade

3

VERMONT DIVISION FOR HISTORIC PRESERVATION

CO. _____ TOWN _____ DATE _____

SUBJECT _____ VIEW AF

FILE # 75-A-45 CREDIT K. Hatch

PROPERTY OF THE NATIONAL REGISTER



Brandon Village Historic District

Brandon, Vermont

Credit: Jane McLuckie

Date: 12/75

Negative filed at Vermont Division for
Historic Preservation

L to R: St. Mary's Rectory (#89), and Catholic
Church (#88), view to SE

Photograph #38 of 55

Rutland Co.

APR 30 1976

DEC 22 1975

VERMONT DIVISION FOR HISTORIC PRESERVATION

CO. Rutland TOWN Brandon DATE 12/75
SUBJECT St. Mary's Rectory VIEW SE
FILE # 75-A-73 CREDIT JANE A. McLUCKIE

PROPERTY OF THE NATIONAL REGISTER



VERMONT DIVISION OF HISTORIC SITES
Brandon Village Historic District
Brandon, Vermont *Rutland Co.*
Credit: Kathlyn Hatch
Date: 6/75
Negative filed at Vermont Division for
Historic Preservation
Griswold House, 44 Carver Street (#87), SW
facade
Photograph #39 of 55

APR 30 1976

DEC 24 1970

7

VERMONT DIVISION FOR HISTORIC PRESERVATION

CO. _____ TOWN _____ DATE _____
SUBJECT g. VIEW _____
FILE # 75-A-49 CREDIT K Hatch

PROPERTY OF THE NATIONAL REGISTER



Brandon Village Historic District
Brandon, Vermont *Rutland Co*
Credit: Jane McLuckie

Date: 12/75

Negative filed at Vermont Division for
Historic Preservation

The Pizza Corner (#136), view to NE
Photograph #40 *af-53-*

APR 30 1976

DEC 02 1975

VERMONT DIVISION FOR HISTORIC PRESERVATION

CO. RUTLAND TOWN BRANDON DATE 12/75
SUBJECT UNION STREET SCAPE *RR # Central St.* VIEW NE
FILE # 75-A-73 CREDIT JANE A. McLUCKIE

PROPERTY OF THE NATIONAL REGISTER



Brandon Village Historic District
Brandon, Vermont
Credit: Jane McLuckie *Rutland*
Date: 12/75
Negative filed at Vermont Division for
Historic Preservation
Whelden Coal Pocket (#138), view to NW
Photograph #41 *of 5-5*

APR 30 1976

DEC 22 1976

75 A 73-12

VERMONT DIVISION OF HISTORIC SITES

COUNTY *Rutland* TOWN *Brandon*
SUBJECT *J.H. Whelden Coal Pocket*
DATE *12/75* FILE # *45-A-43*
CREDIT *JANE A. McLUCKIE*
VIEW *N*

PROPERTY OF THE NATIONAL REGISTER



VERMONT DIVISION FOR HISTORIC PRESERVATION

Brandon Village Historic District
Brandon, Vermont
Credit: Kathlyn Hatch *Kathlyn Hatch*
Date: 6/75
Negative filed at Vermont Division for
Historic Preservation
Congregational Church (#146), view to SW
Photograph #42 of 55

APR 30 1976

DEL 26 1976

VERMONT DIVISION FOR HISTORIC PRESERVATION

CO. _____ TOWN _____ DATE _____

SUBJECT _____ VIEW _____

FILE # 75-A-56 CREDIT _____

PROPERTY OF THE NATIONAL REGISTER



Brandon Village Historic District
Brandon, Vermont *Rutland Co*
Credit: Kathlyn Hatch

Date: 7/75

Negative filed at Vermont Division for
Historic Preservation

Brandon Inn Annex (#152), South facade
Photograph #43 *al 53-*

APR 30 1976

NEG 87 270

VERMONT DIVISION FOR HISTORIC PRESERVATION
CO. *Rutland* TOWN *Brandon* DATE *7/75*
SUBJECT *Brandon Inn Annex* VIEW *NE*
FILE # *75-A-45* CREDIT *Kathlyn Hatch*

PROPERTY OF THE NATIONAL REGISTER



ORE

ELEVATOR

BRANDON INN

FINE FOOD AND

THE FROCK SHOP

BRANDON INN

Brandon Village Historic District
Brandon, Vermont *Rutland Co.*
Credit: Kathlyn Hatch
Date: 7/75
Negative filed at Vermont Division for
Historic Preservation
Brandon Inn (#153), South facade
Photograph #44 *of 55*

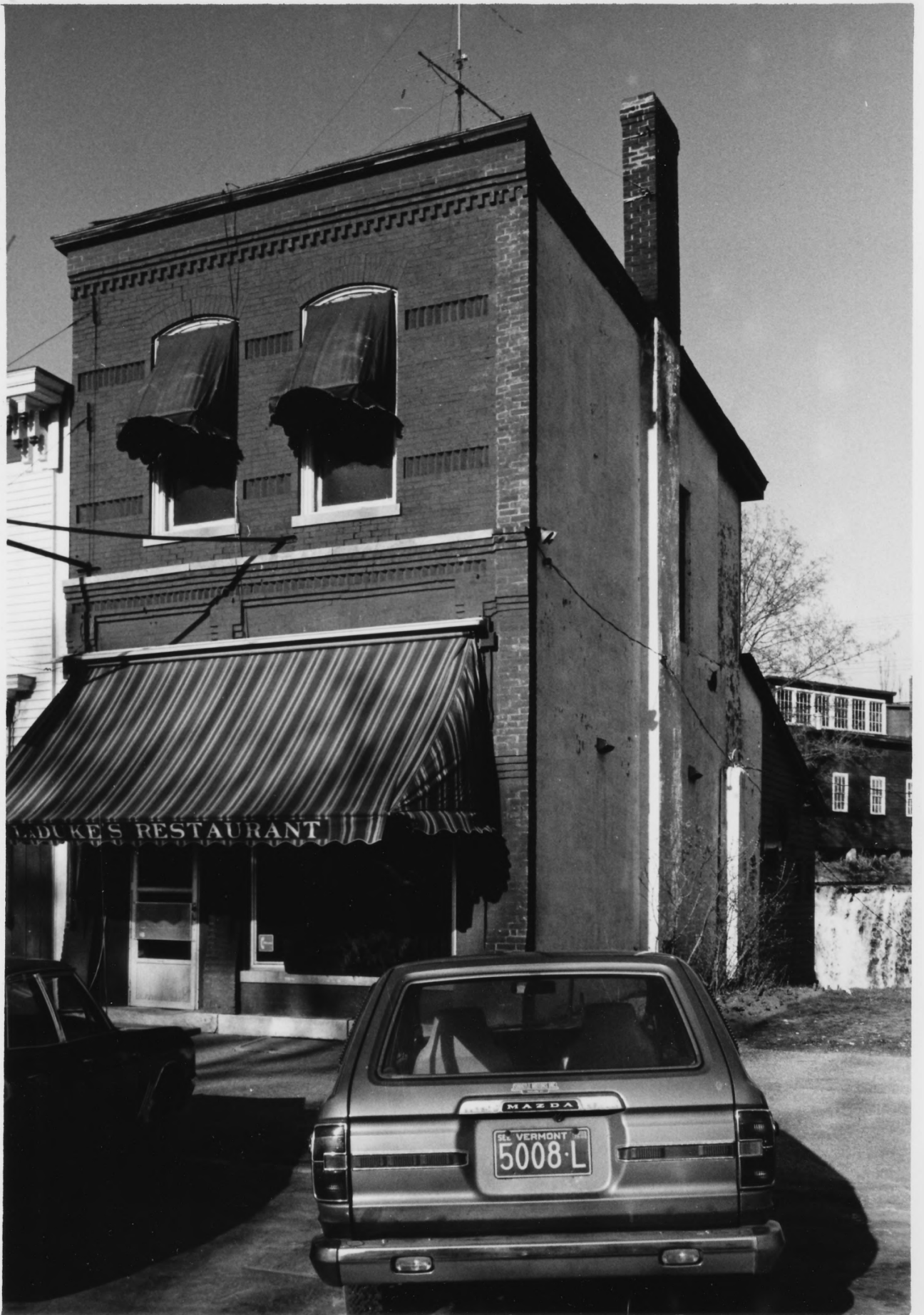
APR 30 1976

DEC 26 1975

PROPERTY OF THE NATIONAL REGISTER

VERMONT DIVISION FOR HISTORIC PRESERVATION

CO. Rutland TOWN Brandon DATE 7/75
SUBJECT Brandon Inn VIEW _____
FILE # 75-A-48 CREDIT Kathlyn Hatch



Brandon Village Historic District
Brandon, Vermont *Rutland Co.*
Credit: Jane McLuckie
Date: 4/76
Negative filed at Vermont Division for
Historic Preservation
LaDuke's Restaurant (#161), West facade
Photograph #45 *of 55*

APR 30 1976

DEC 24 1976

VERMONT DIVISION FOR HISTORIC PRESERVATION

CO. Rutland TOWN Brandon DATE 4/76
SUBJECT La Duke's Restaurant VIEW N.E.
FILE # 76-A-33 CREDIT Jane McLuckie

PROPERTY OF THE NATIONAL REGISTER

33



Brandon Village Historic District

Brandon, Vermont

Credit: Jane McLuckie

Rutland Co

Date: 4/76

Negative filed at Vermont Division for
Historic Preservation

Brandon Lumber and Millwork (#165), view to S
Photograph #46 *of 55*

APR 30 1976

DEC 22 1976

VERMONT DIVISION FOR HISTORIC PRESERVATION

CO. RUTLAND TOWN BRANDON DATE 4/76
SUBJECT BRANDON LUMBER + MILLWORK VIEW S
FILE # 76-A-31 CREDIT JANE MCLUCKIE

PROPERTY OF THE NATIONAL REGISTER

31



Brandon Village Historic District
Brandon, Vermont *Rutland Co.*
Credit: Jane McLuckie
Date: 4/76
Negative filed at Vermont Division for
Historic Preservation
L to R: 5 Seminary Hill (#168), 3 Seminary
Hill (#167), view to E
Photograph #47 of 55

APR 30 1976

DEC 22 1976

VERMONT DIVISION FOR HISTORIC PRESERVATION

CO. RUTLAND TOWN BRANDON DATE 4/76
SUBJECT 5,3 SEMINARY HILL VIEW E
FILE # 76-A-83 CREDIT JANE MCLUCKIE

PROPERTY OF THE NATIONAL REGISTER

33



Brandon Village Historic District

Brandon, Vermont

credit: Jane A. McLuckie

date: 12/75

Negative filed at Vermont Div. for Historic
Preservation

L to R: 4 Seminary Hill St. (#170), 6 Seminary Hill

St. (#169); view to NW

photograph 48 of 55-

APR 30 1976

DEC 28 1976

75 A 77-17

VERMONT DIVISION OF HISTORIC SITES

COUNTY Rutland TOWN Brandon

SUBJECT 4, 6 Seminary Hill

DATE 12/75 FILE # 75-A-41

CREDIT JANE A. McLUCKIE

VIEW NW

PROPERTY OF THE NATIONAL REGISTER



49

Brandon Village Historic District
Brandon, Vermont *Rutland Co.*
credit: Kathlyn Hatch
date: 6/75

Negative filed at Vermont Div. for Historic Preservation

Bunting Law Office, 23 Conant Square (#176),
S. facade

Photograph 49 of 55

#176)

APR 30 1976
DEC 22 1976

4

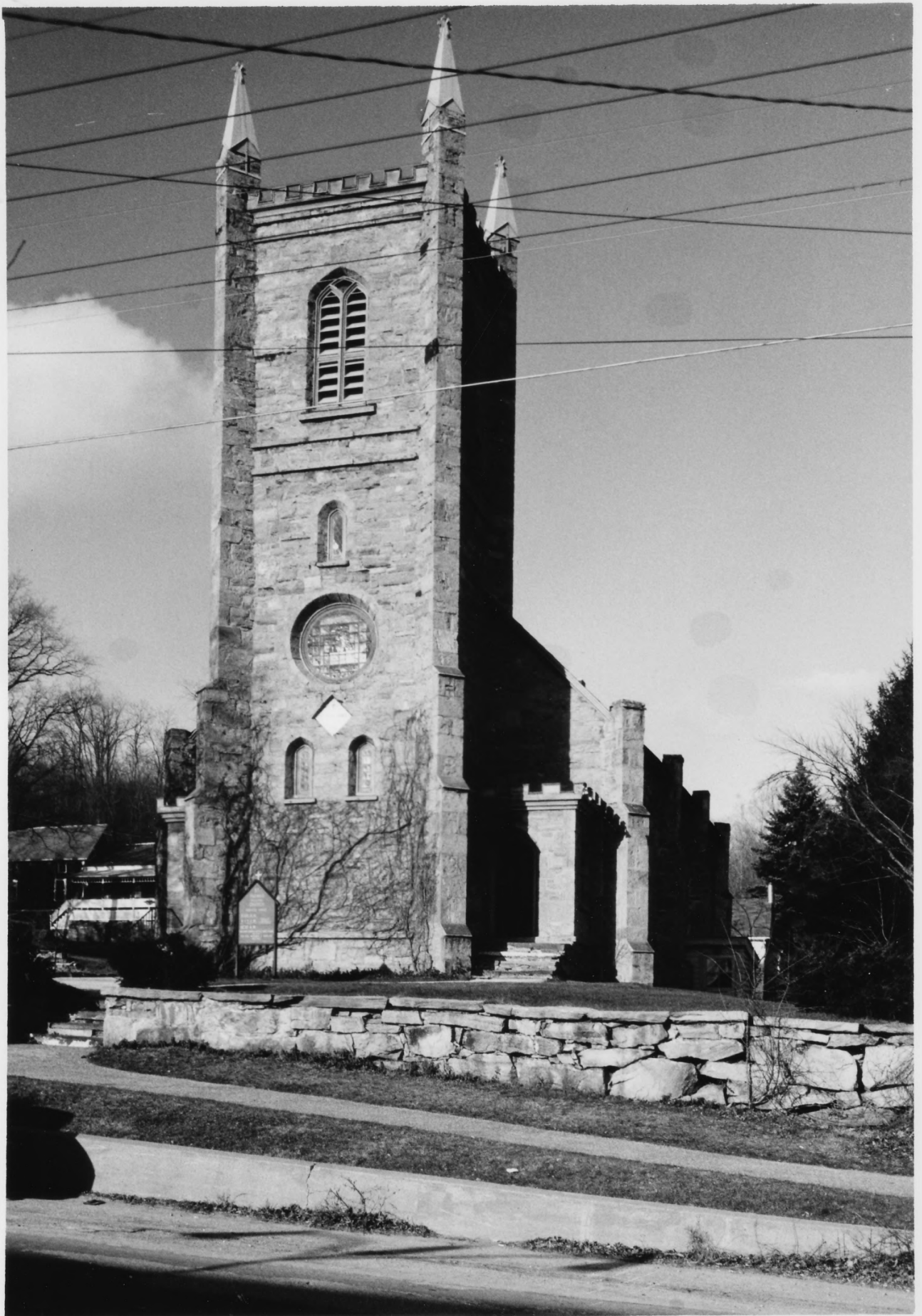
VERMONT DIVISION FOR HISTORIC PRESERVATION

CO. _____ TOWN _____ DATE _____

SUBJECT _____ VIEW _____

FILE # 75-A-46 CREDIT _____

PROPERTY OF THE NATIONAL REGISTER



Brandon Village Historic District
Brandon, Vermont
credit: Jane A. McLuckie
date: 12/75
Negative filed at Vermont Div. for Historic
Preservation
St. Thomas Episcopal Church (#177), S. facade
Photograph 50 of 55

APR 30 1976

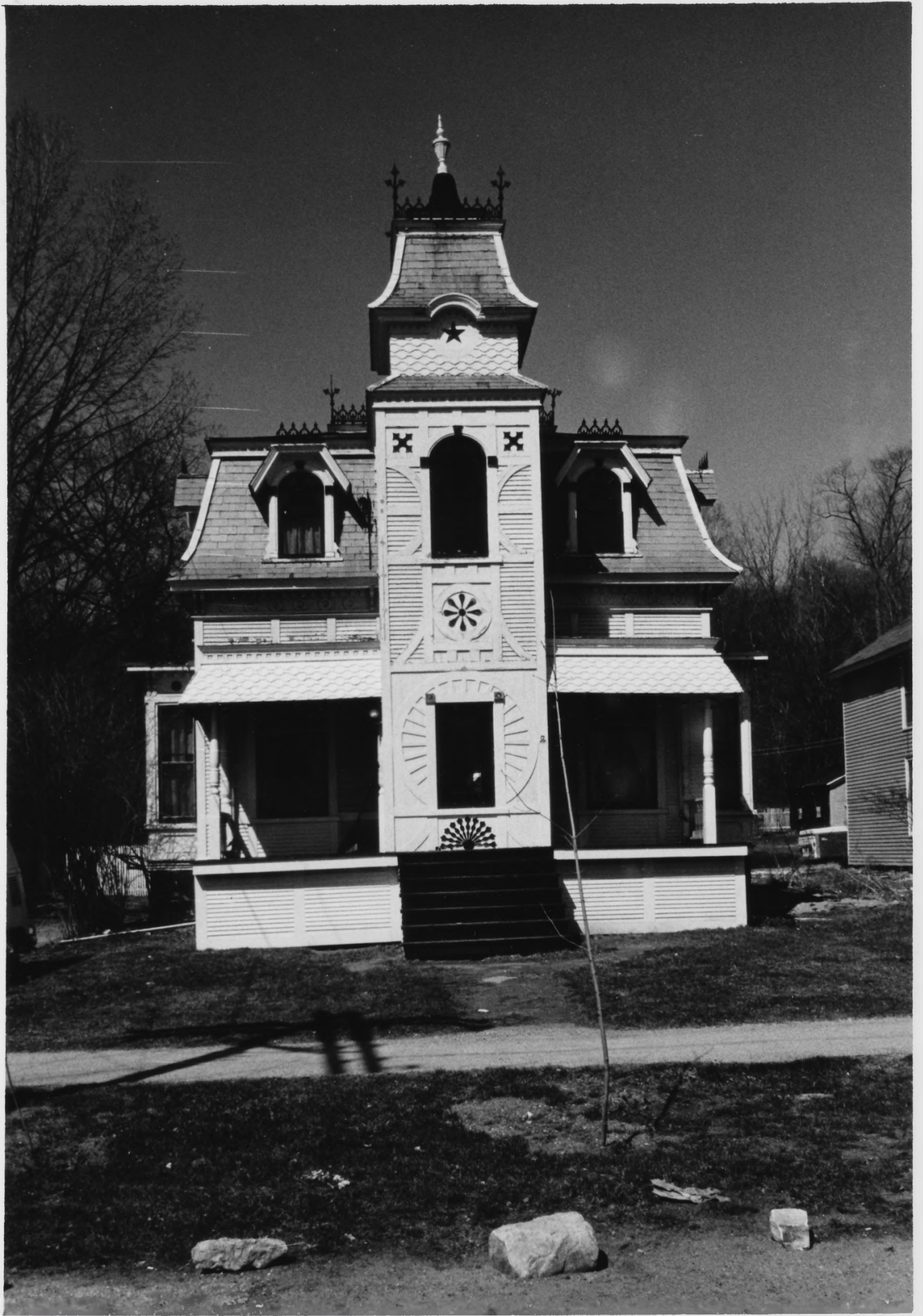
DEC 22 1975

VERMONT DIVISION OF HISTORIC SITES

COUNTY RUTLAND TOWN BRANDON
SUBJECT ST. THOMAS EPISCOPAL CHURCH
DATE 12/75 FILE # 75-A-71
CREDIT JANE A. MCLUCKIE
VIEW N

1-12 H 5 L

PROPERTY OF THE NATIONAL REGISTER



Brandon Village Historic District

Brandon, Vermont

credit: Jane A. McLuckie

date: 4/76

Negative filed at Vermont Div. for Historic
Preservation

the Bird Cage, 39 Conant Square (#191), S. facade
photograph 51 *ap 55*

APR 30 1976

APR 20 1976

DEC 22 1976

VERMONT DIVISION FOR HISTORIC PRESERVATION

CO Rutland TOWN Brandon DATE 4/76
SUBJECT The Bird Cage - 39 Conant Sq. VIEW N
FILE # 76-A-31 CREDIT JANE A. McLUCKIE

PROPERTY OF THE NATIONAL REGISTER

31



Brandon Village Historic District

Brandon, Vermont

credit: Kathlyn Hatch

date: 6/75

Negative filed at Vermont Div. for Historic Preservation

Farrington House, 39 Pearl St. (#208). SE facade

Photograph 52 of 55

APR 00 1976

DEC 22 1976

Rutland Co.

CREDIT *K. Hatch*

VIEW *K. Hatch W*

*52 Farrington House, 39 Pearl St. (#208)
southeast facade*

4

VERMONT DIVISION FOR HISTORIC PRESERVATION

CO. _____ TOWN _____ DATE _____

SUBJECT _____ VIEW _____

FILE # *75-A-46* CREDIT _____

PROPERTY OF THE NATIONAL REGISTER



Brandon Village Historic District

Brandon, Vermont

credit: Jane A. McLuckie

date: 4/76

Negative filed at Vermont Div. for Historic Preservation

Rodney V. Marsh House, 11 Pearl St. (#216), E. facade

Photograph 53 of 53-

Rutland Co.

(# 216)

APR 30 1976

DEC 22 1976

VERMONT DIVISION FOR HISTORIC PRESERVATION

CO. Rutland TOWN Brandon DATE 4/76

SUBJECT 11 Pearl St. - Rodney V. Marsh House VIEW W

FILE # 76-A-31 CREDIT JANE A. MCLUCKIE

PROPERTY OF THE NATIONAL REGISTER

76 A 31



54
Brandon Village Historic District

Brandon, Vermont

credit: Kathlyn Hatch

Rutland Co.

date: 6/75

Negative filed at Vermont Division for Historic
Preservation

Brandon Baptist Church (#225), E. facade

Photograph 54 of 55

APR 30 1976

DEC 22 1976

4

VERMONT DIVISION FOR HISTORIC PRESERVATION

CO. _____ TOWN _____ DATE _____

SUBJECT _____ VIEW _____

FILE # 75-A-46 CREDIT _____

PROPERTY OF THE NATIONAL REGISTER



STEPHEN A. DOUGLAS
Opponent of Abraham Lincoln

The first spirit of national politics
was in Douglas in 1858, when he was in
Washington to meet Lincoln and to
oppose him to Douglas.
Lincoln was elected in 1860.
Douglas was elected in 1861.
Lincoln was elected in 1862.
Douglas was elected in 1863.
Lincoln was elected in 1864.
Douglas was elected in 1865.
Lincoln was elected in 1866.
Douglas was elected in 1867.
Lincoln was elected in 1868.
Douglas was elected in 1869.
Lincoln was elected in 1870.
Douglas was elected in 1871.
Lincoln was elected in 1872.
Douglas was elected in 1873.
Lincoln was elected in 1874.
Douglas was elected in 1875.
Lincoln was elected in 1876.
Douglas was elected in 1877.
Lincoln was elected in 1878.
Douglas was elected in 1879.
Lincoln was elected in 1880.
Douglas was elected in 1881.
Lincoln was elected in 1882.
Douglas was elected in 1883.
Lincoln was elected in 1884.
Douglas was elected in 1885.
Lincoln was elected in 1886.
Douglas was elected in 1887.
Lincoln was elected in 1888.
Douglas was elected in 1889.
Lincoln was elected in 1890.
Douglas was elected in 1891.
Lincoln was elected in 1892.
Douglas was elected in 1893.
Lincoln was elected in 1894.
Douglas was elected in 1895.
Lincoln was elected in 1896.
Douglas was elected in 1897.
Lincoln was elected in 1898.
Douglas was elected in 1899.
Lincoln was elected in 1900.
Douglas was elected in 1901.
Lincoln was elected in 1902.
Douglas was elected in 1903.
Lincoln was elected in 1904.
Douglas was elected in 1905.
Lincoln was elected in 1906.
Douglas was elected in 1907.
Lincoln was elected in 1908.
Douglas was elected in 1909.
Lincoln was elected in 1910.
Douglas was elected in 1911.
Lincoln was elected in 1912.
Douglas was elected in 1913.
Lincoln was elected in 1914.
Douglas was elected in 1915.
Lincoln was elected in 1916.
Douglas was elected in 1917.
Lincoln was elected in 1918.
Douglas was elected in 1919.
Lincoln was elected in 1920.
Douglas was elected in 1921.
Lincoln was elected in 1922.
Douglas was elected in 1923.
Lincoln was elected in 1924.
Douglas was elected in 1925.
Lincoln was elected in 1926.
Douglas was elected in 1927.
Lincoln was elected in 1928.
Douglas was elected in 1929.
Lincoln was elected in 1930.
Douglas was elected in 1931.
Lincoln was elected in 1932.
Douglas was elected in 1933.
Lincoln was elected in 1934.
Douglas was elected in 1935.
Lincoln was elected in 1936.
Douglas was elected in 1937.
Lincoln was elected in 1938.
Douglas was elected in 1939.
Lincoln was elected in 1940.
Douglas was elected in 1941.
Lincoln was elected in 1942.
Douglas was elected in 1943.
Lincoln was elected in 1944.
Douglas was elected in 1945.
Lincoln was elected in 1946.
Douglas was elected in 1947.
Lincoln was elected in 1948.
Douglas was elected in 1949.
Lincoln was elected in 1950.
Douglas was elected in 1951.
Lincoln was elected in 1952.
Douglas was elected in 1953.
Lincoln was elected in 1954.
Douglas was elected in 1955.
Lincoln was elected in 1956.
Douglas was elected in 1957.
Lincoln was elected in 1958.
Douglas was elected in 1959.
Lincoln was elected in 1960.
Douglas was elected in 1961.
Lincoln was elected in 1962.
Douglas was elected in 1963.
Lincoln was elected in 1964.
Douglas was elected in 1965.
Lincoln was elected in 1966.
Douglas was elected in 1967.
Lincoln was elected in 1968.
Douglas was elected in 1969.
Lincoln was elected in 1970.
Douglas was elected in 1971.
Lincoln was elected in 1972.
Douglas was elected in 1973.
Lincoln was elected in 1974.
Douglas was elected in 1975.
Lincoln was elected in 1976.
Douglas was elected in 1977.
Lincoln was elected in 1978.
Douglas was elected in 1979.
Lincoln was elected in 1980.
Douglas was elected in 1981.
Lincoln was elected in 1982.
Douglas was elected in 1983.
Lincoln was elected in 1984.
Douglas was elected in 1985.
Lincoln was elected in 1986.
Douglas was elected in 1987.
Lincoln was elected in 1988.
Douglas was elected in 1989.
Lincoln was elected in 1990.
Douglas was elected in 1991.
Lincoln was elected in 1992.
Douglas was elected in 1993.
Lincoln was elected in 1994.
Douglas was elected in 1995.
Lincoln was elected in 1996.
Douglas was elected in 1997.
Lincoln was elected in 1998.
Douglas was elected in 1999.
Lincoln was elected in 2000.
Douglas was elected in 2001.
Lincoln was elected in 2002.
Douglas was elected in 2003.
Lincoln was elected in 2004.
Douglas was elected in 2005.
Lincoln was elected in 2006.
Douglas was elected in 2007.
Lincoln was elected in 2008.
Douglas was elected in 2009.
Lincoln was elected in 2010.
Douglas was elected in 2011.
Lincoln was elected in 2012.
Douglas was elected in 2013.
Lincoln was elected in 2014.
Douglas was elected in 2015.
Lincoln was elected in 2016.
Douglas was elected in 2017.
Lincoln was elected in 2018.
Douglas was elected in 2019.
Lincoln was elected in 2020.
Douglas was elected in 2021.
Lincoln was elected in 2022.
Douglas was elected in 2023.
Lincoln was elected in 2024.
Douglas was elected in 2025.

Brandon Village Historic District

Brandon, Vermont

credit: Kathlyn Hatch

date: 6/75

Negative filed at Vermont Division for Historic Preservation

Stephen A. Douglas House, 4 Grove St. (#230);

NE facade

photograph 55 of 55

*Stephen A. Douglas House
6/75 NE facade
Kathlyn Hatch*

DEC 22 1976

APR 30 1976

75-B-22 #10

VERMONT DIVISION FOR HISTORIC PRESERVATION

CO. _____ TOWN _____ DATE _____

SUBJECT _____ VIEW _____

FILE # 75-A-46 CREDIT _____

PROPERTY OF THE NATIONAL REGISTER