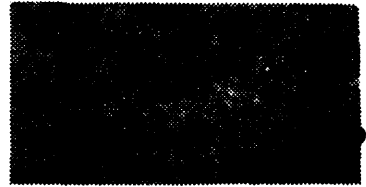


**United States Department of the Interior
National Park Service**

**National Register of Historic Places
Inventory—Nomination Form**



Inventory
Continuation sheet

Item number 7

Page 1 of 2

NAME: Evergreen Mountain Lookout

LOCATION: Mt. Baker - Snoqualmie National Forest; Congressional District 2, Skykomish Ranger District, Skykomish, Washington (53), Snohomish County (061).

ADDRESS: USDA Forest Service
Mt. Baker - Snoqualmie National Forest
1022 First Avenue
Seattle, WA 98104

CLASSIFICATION/CATEGORY: Building CONTRIBUTING RESOURCES: 1 building
NONCONTRIBUTING: 0

DESCRIPTION:

Condition

Deteriorated Altered Original Site

Evergreen Mountain Lookout is situated on the SW ridgecrest of Evergreen Mountain at an elevation of +5,587 feet. The Lookout is accessed by a 1.5 mile long Forest Service trail which transverses a previously burned forest area, fir and hemlock forests, alpine meadows and rugged rock outcrops. It commands a panoramic 360 degree view over the Rapid and Beckler River Valleys toward Mt. Rainier to the south and Glacier Peak to the north.

This one story, single room, 14' x 14' cabin is wood-frame construction and built according to standard Forest Service Lookout House plans from 1932. The floor framing system is supported on and anchored to indigenous rock outcroppings with some concrete piers at corners. The typical pyramidal roof is covered with deteriorated original cedar shingles and original galvanized metal shingle ridge flashing. The lightning protection system is in place. Exterior walls are composed of two-over-two, fixed and pivoting window sash with 1 x 6 v-groove shiplap siding below. Several window lights have been broken or removed. No window shutters remain in place although original hinges and parts of shutter support hardware remain connected to exterior walls. Original exterior door has been removed and structural frame exhibits marginally severe lateral failure. Intact interior finishes are beaded board paneling on walls and ceiling and fir flooring. Standard 2 x 2 interior window supports remain in place. Interior exhibits typical simply constructed standard bunk with robe base, table, firefinder and stand, lightning stool and built-in cabinets/shelves.

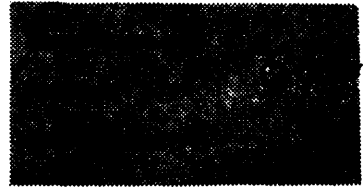
SIGNIFICANCE:

Specific Dates: c. 1934

Builder/Architect: Constructed per standard Forest Service Plan L-4 1930 (revised 1932).
Builder not known.

**United States Department of the Interior
National Park Service**

**National Register of Historic Places
Inventory—Nomination Form**



Continuation sheet

Item number 7

Page 2 of 2

History

Evergreen Mountain Lookout was constructed in 1934 or 1935 according to varied sources. Field, archival record, and oral historical research has not uncovered specific documentation regarding the initial construction or subsequent use of this Lookout. Examination of the historic building fabric clearly indicates the Lookout was constructed according to standard L-4 Lookout House plans in use by the Forest Service between 1932 and 1936. The Lookout was manned year-round during World War II as part of the U.S. Army Aircraft Warning Service.

A substantial 6,000 acre fire on the south side of Evergreen Mountain in 1967 resulted in salvage and logging operations that brought Forest Service roads within 1-1/2 miles of the Lookout. Relatively easy trail access has contributed to increased vandalism, and, in conjunction with exposure to the elements and deferred maintenance, the physical condition of the Lookout has deteriorated. Efforts are underway to encourage the formation of a "user group" to begin to undertake work to repair marginally severe structural problems, which must be addressed in the near future. The Lookout continues to be open to the public and staffed by volunteers during summer hiking season.

Statement of Significance

Evergreen Mountain Lookout, although in a deteriorated condition, remains a noteworthy and unaltered example of the Plan L-4 Lookout House typically constructed on Region 6 between 1932 and 1936 and is one of only two intact historic Lookouts to remain on the old Snoqualmie National Forest. It is among a small group of extant fire lookout buildings on the Forest that once functioned as part of an extensive fire detection and suppression network, which served to protect and conserve timber and other natural resources for over 50 years. This lookout represents an essential aspect of the system as a uniquely functional building type which was specifically designed for construction in isolated and challenging mountaintop environments. Evergreen Mountain Lookout also possesses historical associations with domestic defense during World War II due to its role as part of the U.S. Army Aircraft Warning Service.

GEOGRAPHIC DATA:

Acreage: less than one acre

UTM Reference:

<u>Point</u>	<u>Zone</u>	<u>Easting</u>	<u>Northing</u>
A	10	6300010	5299380

VERBAL BOUNDARY DESCRIPTION:

Evergreen Mountain Lookout (Building #4041) is located in a portion of NE1/4 of NE1/4, Section 16, T.27N, R.12E, Willamette Meridian. Proposed nomination to include lookout house, related rock foundations, lightning protection system and immediate access trail within a 50 foot radius of the center of the Lookout per Green Trails map MONTE CRISTO, WASH - NO 143.