

**United States Department of the Interior
National Park Service**

**National Register of Historic Places
Continuation Sheet**

Section number _____ Page _____

SUPPLEMENTARY LISTING RECORD

NRIS Reference Number 06000843

Date Listed 09/20/2006

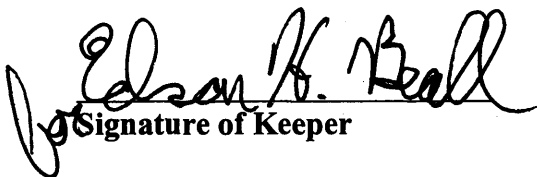
Pasco County Courthouse
Property Name

Pasco
County

Florida
State

N/A
Multiple Name

This property is listed in the National Register of Historic Places in accordance with the attached nomination documentation subject to the following exceptions, exclusions, or amendments, notwithstanding the National Park Service certification included in the nomination documentation.


Signature of Keeper

9-20-06
Date of Action

Amended Items in Nomination:

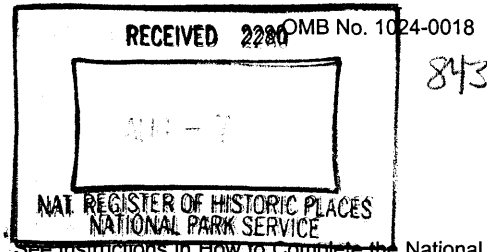
Section 6. Function or Use

Current Function "Recreation/Music Facility" is hereby added for the contributing bandstand.

This information was confirmed by Barbara Mattick of the FL SHPO by telephone.

DISTRIBUTION:

- National register property file
- Nominating Authority (without attachment)



United States Department of the Interior
National Park Service

**NATIONAL REGISTER OF HISTORIC PLACES
REGISTRATION FORM**

This form is for use in nominating or requesting determinations for individual properties and districts. See instructions in How to Complete the National Register of Historic Places Registration Form (National Register Bulletin 16A). Complete each item by marking "x" in the appropriate box or by entering the information requested. If any item does not apply to the property being documented, enter "N/A" for "not applicable." For functions, architectural classification, materials, and areas of significance, enter only categories and subcategories from the instructions. Place additional entries and narrative items on continuation sheets (NPS Form 10-900a). Use a typewriter, word processor, or computer, to complete all items.

1. Name of Property

historic name PASCO COUNTY COURTHOUSE

other names/site number FMSF# PA386

2. Location

street & number 37918 Meridian Avenue N/A not for publication

city or town Dade City N/A vicinity

state Florida code FL county Pasco code 101 zip code 33525

3. State/Federal Agency Certification

As the designated authority under the National Historic Preservation Act, as amended, I hereby certify that this nomination request for determination of eligibility meets the documentation standards for registering properties in the National Register of Historic Places and meets the procedural and professional requirements set forth in 36 CFR Part 60. In my opinion, the property meets does not meet the National Register criteria. I recommend that this property be considered significant nationally statewide locally. (See continuation sheet for additional comments.)

Barton C. Mattick / DSHPO 8/3/06
Signature of certifying official/Title Date

Division of Historical Resources, Bureau of Historic Preservation
State or Federal agency and bureau

In my opinion, the property meets does not meet the National Register criteria. (See continuation sheet for additional comments.)

Signature of certifying official/Title Date

State or Federal agency and bureau

4. National Park Service Certification

I hereby certify that the property is:

- entered in the National Register See continuation sheet
- determined eligible for the National Register See continuation sheet.
- determined not eligible for the National Register See continuation sheet.
- removed from the National Register.
- other, (explain) _____

Edson H. Beall
Signature of the Keeper

9.20.06
Date of Action

5. Classification

Ownership of Property
(Check as many boxes as apply)

- private
- public-local
- public-State
- public-Federal

Category of Property
(Check only one box)

- buildings
- district
- site
- structure
- object

Number of Resources within Property
(Do not include any previously listed resources in the count)

Contributing	Noncontributing	
2	0	buildings
0	0	sites
0	1	structures
0	3	objects
2	4	total

Name of related multiple property listings
(Enter "N/A" if property is not part of a multiple property listing.)

Number of contributing resources previously listed in the National Register

"N/A"

0

6. Function or Use

Historic Functions
(Enter categories from instructions)

GOVERNMENT: county courthouse

Current Functions
(Enter categories from instructions)

GOVERNMENT: government offices

7. Description

Architectural Classification
(Enter categories from instructions)

Late 19th & 20th Century Revival/ Neo-Classical Revival

Materials
(Enter categories from instructions)

foundation CONCRETE
walls BRICK

roof ASPHALT
other _____

Narrative Description

(Describe the historic and current condition of the property on one or more continuation sheets.)

8. Statement of Significance

Applicable National Register Criteria

(Mark "x" in one or more boxes for the criteria qualifying the property for National Register listing.)

- A** Property is associated with events that have made a significant contribution to the broad patterns of our history.
- B** Property is associated with the lives of persons significant in our past.
- C** Property embodies the distinctive characteristics of a type, period, or method of construction or represents the work of a master, or possesses high artistic values, or represents a significant and distinguishable entity whose components lack individual distinction.
- D** Property has yielded, or is likely to yield information important in prehistory or history.

Criteria Considerations

(Mark "x" in all the boxes that apply.)

Property is:

- A** owned by a religious institution or used for religious purposes.
- B** removed from its original location.
- C** a birthplace or grave.
- D** a cemetery.
- E** a reconstructed building, object, or structure.
- F** a commemorative property.
- G** less than 50 years of age or achieved significance within the past 50 years

Narrative Statement of Significance

(Explain the significance of the property on one or more continuation sheets.)

9. Major Bibliographical References

Bibliography

Cite the books, articles, and other sources used in preparing this form on one or more continuation sheets.)

Previous documentation on file (NPS):

- preliminary determination of individual listing (36 CFR 36) has been requested
- previously listed in the National Register
- previously determined eligible by the National Register
- designated a National Historic Landmark
- recorded by Historic American Buildings Survey # _____
- recorded by Historic American Engineering Record

Areas of Significance

(Enter categories from instructions)

POLITICS/GOVERNMENT

ARCHITECTURE

Period of Significance

1902-1956

Significant Dates

1909

1920

Significant Person

N/A

Cultural Affiliation

N/A

Architect/Builder

Hosford, E.C., Company

Mutual Construction Company

Primary location of additional data:

- State Historic Preservation Office
- Other State Agency
- Federal agency
- Local government
- University
- Other

Name of Repository

10. Geographical Data

Acreage of Property 1.03 acres

UTM References

(Place additional references on a continuation sheet.)

1	1 7	3 8 3 5 0 0	3 1 3 7 9 0 0
	Zone	Easting	Northing
2			

3			
	Zone	Easting	Northing
4			

See continuation sheet

Verbal Boundary Description

(Describe the boundaries of the property on a continuation sheet.)

Boundary Justification

(Explain why the boundaries were selected on a continuation sheet.)

11. Form Prepared By

name/title Streelman, Amy/Jessica Forbes, Robert O. Jones, Historic Preservationist

organization Bureau of Historic Preservation date July 2006

street & number 500 South Brounough Street telephone 850-245-6333

city or town Tallahassee state FL zip code 32399-0250

Additional Documentation

Submit the following items with the completed form:

Continuation Sheets

Maps

A USGS map (7.5 or 15 minute series) indicating the property's location.

A Sketch map for historic districts and properties having large acreage or numerous resources.

Photographs

Representative black and white photographs of the property.

Additional items

(check with the SHPO or FPO for any additional items)

Property Owner

(Complete this item at the request of SHPO or FPO.)

name Pasco County Board of County Commissioners

street & number 37918 Meridian Avenue telephone 352-521-4111

city or town Dade City state FL zip code 33525

Paperwork Reduction Act Statement: This information is being collected for applications to the National Register of Historic Places to nominate properties for listing or determine eligibility for listing, to list properties, and amend listings. Response to this request is required to obtain a benefit in accordance with the National Historic Preservation Act, as amended (16 U.S.C. 470 et seq.).

Estimated Burden Statement: Public reporting burden for this form is estimated to average 18.1 hours per response including time for reviewing instructions, gathering and maintaining data, and completing and reviewing the form. Direct comments regarding this burden estimate or any aspect of this form to the Chief, Administrative Services Division, National Park Service, P.O. Box 37127, Washington, DC 20013-7127; and the Office of Management and Budget, Paperwork Reductions Projects (1024-0018), Washington, DC 20503.

United States Department of the Interior
National Park Service

**NATIONAL REGISTER OF HISTORIC PLACES
CONTINUATION SHEET**

Section number 7 Page 1 **PASCO COUNTY COURTHOUSE, DADE CITY,
PASCO COUNTY, FLORIDA**

SUMMARY

The Pasco County Courthouse is located at 37918 Meridian Avenue, Dade City, Pasco County, Florida. The Courthouse is a two-story Neo-Classical Revival Style brick building built in 1909. Additions to the 1909 Pasco County Courthouse were made in 1920, 1938, 1952, 1956, 1958, and 1961. Restoration work to remove these additions and restore the building back to the 1920 configuration began in April 1996. The restoration project was completed in March 1999. The symmetrical building is characterized by the two-story porticoes in the center bays of the north, east, and west elevations. The massive composite columns with Corinthian capitals rise above the roofline to carry the pediment, creating a prominent centerpiece for the building on three of its elevations. The base of the building is constructed of concrete finished with stucco. Stucco also covers the pilasters at the corners and for the prominent lintels and sills. An attic story supports the drum and dome of the octagonal clock and bell tower. The Pasco County Courthouse retains its historic integrity to a high degree.

An additional historic resource on the property is a 1925 Bandstand with an attached World War II service persons memorial plaque is near the northeast corner. Non-historic resources are a paved circular plaza that includes a short wall, street lamps, and three commemorative plaques. These plaques are for Pasco County Founding Families, Commissioner Sylvia Young, and a State historic marker.

SETTING

The Pasco County Courthouse is sited on one city block containing just over one acre of land in the downtown of Dade City (Photo #1). This block is bounded on the north by Meridian Avenue, the primary east-west route through the downtown core, and on the south by Pasco Avenue. The western boundary is 7th Street, the north-south downtown transition for U.S. Highways 98/301, and the eastern boundary is 6th Street (Site Map).

A brick and wood Pasco County Bandstand is found near the northeast corner of the block (Photo #2). A veterans' memorial listing the names of armed forces servicemen and servicewomen from Pasco County was added to the exterior of the bandstand in 1950. Located near the west approach to the building is a state historical marker commemorating the establishment of Pasco County (Photo #3).

Additions to the site during the restoration work in the 1990s included a circular plaza on the north, paved with brick in a herringbone pattern. Eighteen-inch high brick seat walls are found around the plaza, each with sierra stone caps that terminate in columns topped by ball finials (Photo #4). Sidewalks leading northeast and northwest from the plaza to the edge of the block are lined with lamps to provide pedestrian lighting. These sidewalks contain 223 cast bronze plaques embedded at the sides of the concrete to commemorate the founding families of Pasco County who lived in the county prior to 1887 (Photo #5). A non-historic plaque commemorating Pasco County Commissioner Sylvia Young's efforts to restore the Pasco County Courthouse is located northeast of the courthouse (Photo #6).

United States Department of the Interior
National Park Service

**NATIONAL REGISTER OF HISTORIC PLACES
CONTINUATION SHEET**

Section number 7 Page 2 **PASCO COUNTY COURTHOUSE, DADE CITY,
PASCO COUNTY, FLORIDA**

Several notable historic buildings dating from the same era as the Pasco County Courthouse remain in its vicinity. West of the courthouse, directly across 7th Street stands the Touchton Building, built in 1908, which housed a drug store and offices, and currently houses an apparel shop. The 1900 Treiber Building, the oldest commercial building in Pasco County, and the 1905 Griffin Block Building are also located west of the courthouse.

PHYSICAL DESCRIPTION

Exterior

The two-story Neo-Classical Revival Style courthouse has a domed clock and bell tower at the center of the hipped roof and the porticoes found at the north, east, and west entrances (Photo #1). The two-story, 7,900 square foot center portion of the building was constructed in 1909. The two-story wings on the east and west ends of the courthouse were completed by 1920 (Figure #1), adding 2,016 square feet¹. The brick structural system rests on a concrete foundation, which is clad in smooth stucco. A string course, which wraps around the building, separates the foundation from the first story. Fenestration throughout the building primarily consists of one-over-one single-hung vinyl sash windows. Along the first story, these windows have a transom window and a cornice at the top portion of the window. Second-story windows consist of the single-hung sash windows topped by a cornice. An attic story is located above the second story. Four brick chimneys are found on the rooftop; these chimneys are located at the four corners of the central mass of the building. The octagonal dome of the clock and bell tower rests at the very center of the hipped roof, which is covered in metal shingles. Each side of the dome contains paired single-hung sash windows topped by louvered transoms. Paired pilasters separate the window bays. The cornice line separates the wood drum from the metal dome. Four clocks facing the four cardinal directions are found on the dome, which is topped by a lantern. The original bell tolls the hours shown on the clocks.

The north, main façade features three bays (Photo #7). The taller center bay features the main entrance to the courthouse. Concrete steps and a stair rail lead to the portico. Two pairs of Tuscan columns with Corinthian capitals support the pediment. Paired doors topped by a large transom window lead into the interior of the courthouse. A balconette, supported by scrolled brackets, is found below the paired windows at the center of the second story. Paired windows are found at the ends of this bay. Single windows are set between the paired windows on this bay. A spandrel panel separates the second story windows from the transom clerestory windows. Each of the two outer bays contains two single windows. Corner pilasters delineate the edge of the building. A cornice at the roofline, which wraps around the building, separates the parapet from the second story.

¹ n.a. Pasco County Courthouse, Dade City, Florida. n.d.

**United States Department of the Interior
National Park Service**

**NATIONAL REGISTER OF HISTORIC PLACES
CONTINUATION SHEET**

Section number 7 Page 3 **PASCO COUNTY COURTHOUSE, DADE CITY,
PASCO COUNTY, FLORIDA**

The south elevation consists of three bays, and repeats the pattern found on the north façade (Photo #8). This is the only elevation that does not feature a portico.

The east and west elevations each feature three two-story bays (Photo #9). Concrete steps lead to the pedimented portico on the west elevation, while an ADA-compliant ramp is located at the east portico (Photo #10). Both elevations feature two-story Tuscan columns with Corinthian capitals, which support a central pediment. The paired doors in these entrances are flanked by three-panel sidelights and topped by four-light transom windows. The second-story fenestration in these central bays consists of three single-hung sash windows. The outer bays contain two sets of paired single-hung sash windows.

Interior

The wooden floors are carpeted on the second floor, and the main corridors on the first floor have mosaic tiles (Photo #11). The walls are plaster finished, and most ceilings have acoustic drop ceilings. The three entrances from the porticoes on the north, east, and west elevations lead into the central hallways that divide the building into quadrants. These halls serve as the reception areas for visitors and provide access to the first floor offices of the County Administrator, Administrative Secretary, County Commissioners, and restrooms. In the west vestibule stairways on the north and south lead to the second floor. The stairs retain their original metal railings, newels, and renovated marble steps (Photo #12). From the east vestibule there is access to the second floor via an elevator on the south and enclosed stairway on the north. At the second-floor level, the County Commission meeting room accommodates public seating for seventy people and occupies the central part of the building (Photo #13), used as the courtroom in 1909. On the east, the portion of the 1920s building has the elevator and stairway, a mechanical room and a communications room. The west portion of the 1920s building has an office for a county attorney, stairways, bathroom, and break room.

Bandstand & Memorial Plaque

The Pasco County Bandstand, constructed circa 1925, has an octagonal plan (Photo #2). The elevated base is constructed from bricks that meet in open joints at the vertices. Tapered box columns and wood braces support the hipped roof, which is clad in clay tiles. Exposed jigsaw-cut rafter tails decorate the soffit. The ceiling of the bandstand is clad in beadboard. A citizens' campaign raised funds to erect the bandstand in hopes of encouraging a return trip by John Phillip Sousa.² In 1950, a veterans' memorial was inset into the base of the bandstand. This memorial lists the names of armed forces servicemen and servicewomen from Pasco County. During the 1998 restoration of the Courthouse, the bandstand was repaired and repainted.

² Horgan, James J., Alice F. Hall, and Edward J. Herrmann. The Historic Places of Pasco County. Dade City, Florida: Pasco County Historical Preservation Committee, 1992. p. 44-45.

**United States Department of the Interior
National Park Service**

**NATIONAL REGISTER OF HISTORIC PLACES
CONTINUATION SHEET**

Section number 7 Page 4 **PASCO COUNTY COURTHOUSE, DADE CITY,
PASCO COUNTY, FLORIDA**

ALTERATIONS

In 1920, extensions to the east and west elevations included porticos. In 1938, an eastern addition was erected as a Works Progress Administration (WPA) Project No. 51-30055. James Gamble Rogers II was the architect for this addition, which measured 8,925 square feet and included a basement to house jail facilities. The 3,910 square foot 1952 addition was also on the east side of the courthouse. In 1956, an addition designed by De Minicis and Patterson, Architects, with E.M. Covington as the contractor, was built on the northwest corner. A 1958 addition mirrored the 1956 addition on the southwest corner. Both the 1956 and 1958 additions included basements. In 1961, an addition was built along the entire south elevation, bringing the total area of the building to over 39,000 square feet (Figure 2).³

Renovations completed in 1998 were conducted under the supervision of Rink Reynolds Fisher Architects of Jacksonville, Florida. During the renovation the 1938, 1952, 1956, 1958, and 1961 additions were removed. The east entry has been ramped to provide disabled access. The exterior windows and doors were replaced. In the interior, original exposed bricks were repaired (Photo #13). Other walls were finished with combinations of vinyl wall covering, oak chair rails and paint. Spandrels above wood panel doors were used at high ceiling areas. Fireplace mantels and a spiral staircase saved from the Courthouse additions were installed as decorative artifacts (Photo #14 & 15). At a total restoration project cost of \$2.3 million dollars. Pasco County received \$1.1 million from the Florida Legislature under the Special Category Grant process, administered by the bureau of Historic Preservation of the Florida Department of State. The Pasco County Courthouse was rededicated in December 1998.

NON-CONTRIBUTING RESOURCES

The landscape of the courthouse block is not historic except for the placement of the bandstand. The circular plaza composed of a wall, walkways, lamps, is not historic, nor are three commemorative plaques.

³ Ibid.

United States Department of the Interior
National Park Service

**NATIONAL REGISTER OF HISTORIC PLACES
CONTINUATION SHEET**

Section number 8 Page 1 **PASCO COUNTY COURTHOUSE, DADE CITY,
PASCO COUNTY, FLORIDA**

SUMMARY

The Pasco County Courthouse is nominated to the National Register for significance at the local level under Criterion A and C in the areas of Politics and Government and Architecture. The courthouse is an excellent example of Neo-Classical Revival Style architecture applied to a government building. The Pasco County Courthouse was designed by the E.C. Hosford Company and constructed under the supervision of architect Artemus Roberts. The Courthouse has been in continuous use as a county government building since its construction in 1909. The courthouse building was expanded over the years, but was recently restored to its 1920 appearance through a series of renovations that took place from 1996 to 1999.

HISTORICAL CONTEXT

In 1887, Pasco County separated from the southern portion of Hernando County. The name "Pasco County" was chosen in an effort to gain support for a bill to help the new county secede from Hernando County. The county was named for the popular Samuel Pasco, a Confederate veteran, speaker of the Florida House, and U.S. Senator.¹ The new county was divided into five districts. Since the majority of the population of the county was located in its east side at this time, Dade City was named county seat temporarily. An election was held to determine the permanent county seat and Dade City won the election in 1889 by promising to construct a county courthouse. H.W. Coleman and W.A. Ferguson provided rent-free quarters for official county business while the first two-story, wood frame courthouse was under construction. The first courthouse in Pasco County, built by James Lee and H. C. Griffin, was completed in 1891.² On December 6, 1909, the wood frame courthouse was sold for \$500.00 to R. J. McCutcheon and burned to the ground shortly after.

HISTORICAL SIGNIFICANCE

On April 6, 1909, plans prepared by E.C. Hosford Company of Atlanta and Eastman, Georgia, and Bartow, Florida, were accepted by the Pasco County Board of County Commissioners. The lowest bid of \$34, 860.00 from the Mutual Construction Company of Louisville, Kentucky, was accepted on May 10, 1909. Architect Artemis Roberts was appointed as superintendent the following day. Roberts was a prominent Dade City architect who designed a number of buildings in downtown Dade City.³ A five mil tax was levied to finance the building. The new courthouse, completed in 1909, measured 7,900 square feet. By 1920, two-story extensions on the east and west ends of the courthouse were constructed, adding 2,016 square feet.⁴ On January 3, 1910, all officers were ordered to move into the new Courthouse. Additions to the east and west sides were constructed in 1920. A spiral staircase was included in the 1920 addition which expanded the east and west elevations.

¹ Tebeau, Charlton W. A History of Florida. Miami, Florida: University of Miami Press, 1971, p.299.

² Morris, Suzie and Cassie Dowling. History of Dade City. Dade City, Florida: Pioneer Florida Museum Newsletter, Spring 1987.

³ Hedman, Carol Jeffares. Historic courthouse's roots untangled with discovery. The Tampa Tribune, 19 July, 2000.

⁴ n.a. Pasco County Courthouse, Dade City, Florida. n.d.

**United States Department of the Interior
National Park Service**

**NATIONAL REGISTER OF HISTORIC PLACES
CONTINUATION SHEET**

Section number 8 Page 2 **PASCO COUNTY COURTHOUSE, DADE CITY,
PASCO COUNTY, FLORIDA**

The brick and wood Pasco County Bandstand found near the northeast corner of the block was built circa 1925, after a visit by John Phillip Sousa to Dade City. A citizens' campaign raised funds to erect the bandstand in hopes of encouraging a return trip by Sousa.⁵ A veterans' memorial listing the names of armed forces servicemen and servicewomen from Pasco County was added to the exterior of the bandstand in 1950.

Initial county government functions within the courthouse included the county court, sheriff's office, and county clerk. An elevator and telephone switchboard were located in the center of the east/west corridor. Due to accelerated growth in Pasco County, more additions were constructed to increase the size of the courthouse (see alterations diagram). In 1938, an eastern addition was erected as Works Progress Administration (WPA) Project No. 51-30055. James Gamble Rogers II was the architect for this addition, which measured 8,925 square feet and included a basement to house jail facilities. Additional services included in the courthouse at this time included the tax office, property records, the county commission offices, and school board. In 1938, the courtroom was still centrally located on the second floor.

In 1952, a 3,910 square foot addition was added on the east side of the courthouse. In 1956, an addition was built on the northwest corner was designed by De Minicis and Patterson, Architects, with E.M. Covington as the contractor. A 1958 addition mirrored the 1956 addition on the southwest corner; both the 1956 and 1958 additions included basements. In 1961, an addition was built along the entire south elevation, bringing the total area of the building to over 39,000 square feet.⁶

In 1979, the West Pasco Government Center was constructed in New Port Richey, located in the rapidly-growing west end of Pasco County. At this time several county government services, including the courts, were transferred to this new facility. The Pasco County Courthouse in Dade City still housed county government offices, stored records, and provided services for the eastern portion of the county. Additional government facilities were constructed in other areas of the county, including new school district offices in Land O' Lakes, southwest of Dade City.

Pasco County hired the architectural firm Rink Reynolds Fisher Architects to evaluate the feasibility of restoring the courthouse to its 1920 appearance. Extensive research with the assistance of different organizations including the Pasco County Historical Society was conducted to formulate a comprehensive restoration project. Restoration work to remove the post-1920 additions began in April 1996. The project lasted three years and was completed in March 1999, at a total cost of \$2.3 million with \$1.1 million provided from the Florida Legislature under the Special Category Grant process, administered by the Bureau of Historic Preservation of the Florida Department of State. The Pasco County Courthouse was rededicated in December

⁵ Horgan, James J., Alice F. Hall, and Edward J. Herrmann. The Historic Places of Pasco County. Dade City, Florida: Pasco County Historical Preservation Committee, 1992. p. 44-45.

⁶ n.a. Pasco County Courthouse, Dade City, Florida. n.d.

**United States Department of the Interior
National Park Service**

**NATIONAL REGISTER OF HISTORIC PLACES
CONTINUATION SHEET**

Section number 8 Page 3 **PASCO COUNTY COURTHOUSE, DADE CITY,
PASCO COUNTY, FLORIDA**

1998. Aside from the renovations in the late 1990s, the Pasco County Courthouse has been in continuous use as a county government building since its construction. The Pasco County Courthouse currently houses County Commissioner and County Administrator offices on the first floor and the Board of County Commissioners meeting room on the second floor.

ARCHITECTURAL CONTEXT

Neo-Classical Revival

The Pasco County Courthouse is an excellent example of the Neo-Classical Revival architectural style. The return to classical styles in public buildings was influenced by the 1893 World's Columbian Exposition and by the 1901 Pan-American Exposition. The Neo-Classical Revival Style, in vogue during the first quarter of the twentieth century, relied more on Greek and Roman elements and less on embellishments seen in the Beaux-Arts Classicism of the late nineteenth century. Such prominent architects as McKim, Mead and White, and John Russell Pope designed enormous buildings in New York and Washington that employed the restrained vocabulary of the ancient world. The hallmarks of the style include broad expanses of plain wall surfaces, simple roof lines, attic stories, parapets, and the use of both the Greek and Roman orders. This style incorporates lintels rather than arched windows and doorways, symmetrical plans, and full-height porticoes with pediments.⁷ The colossal columns and imposing proportions used in the Neo-Classical Revival Style convey authority, making this style well-suited for large public buildings, particularly those used in government and finance.

Vernacular

The Pasco County Bandstand is an example of the Vernacular Masonry construction. The term "vernacular" embraces a diversity of folk and mass-produced building forms. Vernacular buildings are designed and constructed by lay builders who use traditional building techniques. Locally available materials and suitability to the environment usually influenced the construction. As mass production became more common in the late nineteenth and early twentieth centuries, building materials became standardized. Builders in the early twentieth century used decorative features derived from historical architectural styles and from the then popular Craftsman and Mediterranean Revival architectural styles. Vernacular building trends are significant for their ability to define unique regional and local characteristics.

⁷ Blumenson, John J.-G. Identifying American Architecture: A Pictorial Guide to Styles and Terms, 1600-1945. New York: W.W. Norton & Company, 1981. pp. 68-69.

**United States Department of the Interior
National Park Service**

**NATIONAL REGISTER OF HISTORIC PLACES
CONTINUATION SHEET**

Section number 8 Page 4 **PASCO COUNTY COURTHOUSE, DADE CITY,
PASCO COUNTY, FLORIDA**

ARCHITECTURAL SIGNIFICANCE

The Pasco County Courthouse is an excellent example of Neo-Classical Revival architecture applied to a government building. The Courthouse was designed by the well-known architectural firm E.C. Hosford Company, and constructed under the supervision of prominent architect Artemus Roberts. The Courthouse features several distinctive elements of the Neo-Classical Revival Style, including the two-story porticoes with pediments, colossal composite columns, an attic story obscured by a pediment, lintel windows and doorways, and the central drum and dome with a bell and clock tower. Renovations to the courthouse have restored the 1920 appearance of this building. The Pasco County Courthouse retains a high degree of historic integrity.

Edward C. Hosford

Edward C. Hosford was born in Cochran, Georgia, in April 1883. He received his degree from Georgia School of Technology and began his practice in Eastman, Georgia, in 1904. Hosford moved to Lakeland, Florida, in 1920. His firm, E.C. Hosford Company of Atlanta and Eastman, Georgia, and Bartow, Florida, designed several courthouses from 1908 to 1928. Hosford-designed courthouses are found in Hendry (NR 1990), Polk (NR 1989), Baker (NR 1986), Jefferson, and Lafayette counties in Florida; Hamilton, Harris (NR 1980), Bulloch (NR 1980), Dodge (NR 1980), and Glades counties in Georgia; and Mason County, Texas. Many of the large-scale public buildings designed by E.C. Hosford Company are Neo-Classical Revival in style.

Artemus Roberts

Artemus Roberts was born in Richmond, Indiana, on October 28, 1841. He graduated from Michigan University at Ann Arbor, where he studied architecture and engineering, in 1867. In 1870, Roberts moved to Lincoln, Nebraska, where he designed several commercial and institutional buildings. He also designed a Queen Anne style home for presidential candidate William Jennings Bryan in Lincoln. Roberts designed several buildings in Dade City, including the Griffin Block and the Dade City Woman's Club (NR 2003). Roberts died in 1944 at age 102.

United States Department of the Interior
National Park Service

**NATIONAL REGISTER OF HISTORIC PLACES
CONTINUATION SHEET**

Section number 9 Page 1 **PASCO COUNTY COURTHOUSE, DADE CITY,
PASCO COUNTY, FLORIDA**

BIBLIOGRAPHY

Books

- Blumenson, John J.-G. Identifying American Architecture: A Pictorial Guide to Styles and Terms, 1600-1945. New York: W.W. Norton & Company, 1981. pp. 68-69.
- Dunson, Eleanor. East Pasco Heritage. Dade City, Florida: First Baptist Church of Dade City, 1976.
- Hendley, J.A. History of Pasco County. Dade City, Florida: Privately Published, 1940.
- Horgan, James J., Hall, Alice F., Herrmann, Edward J. The Historic Places of Pasco County. Dade City, Florida: Pasco County Historical Preservation Committee, 1992.
- Tebeau, Charlton W. A History of Florida. Miami, Florida: University of Miami Press, 1971.

Newspapers

- Hedman, Carol Jeffares, "Historic Courthouse's Roots Untangled with Discovery," The Tampa Tribune, 19 July, 2000.
- Jeffares, Carol. Pasco Heritage. Tampa, Florida: The Tribune Co., 1987.
- Morris, Suzie and Cassie Dowling. "History of Dade City." Dade City, Florida: Pioneer Florida Museum Newsletter, Spring 1987.

Government Documents

- Pasco County, Florida. Board of County Commissioners Minute Books No.1 & 2, 1887-1910.

Other

- Central Pasco Chamber of Commerce. "History of Pasco County, Florida." Online at:
<http://centralpascochamber.com/history.htm>, n.d.

**United States Department of the Interior
National Park Service**

**NATIONAL REGISTER OF HISTORIC PLACES
CONTINUATION SHEET**

Section number 10 Page 1 **PASCO COUNTY COURTHOUSE, DADE CITY,
PASCO COUNTY, FLORIDA**

VERBAL BOUNDARY DESCRIPTION

MCELROY'S ADDITION TO DADE CITY PB 1 PG13 ALL OF BLOCK 3
DB 7 PGS. 787 & 788
DB 15 PGS. 345, 618, 623, 670 671 & 791
Parcel # 27-24-21-0280-00300-00A0

BOUNDARY JUSTIFICATION

The National Register boundary encompasses the block historically associated with the Pasco County Courthouse.

**United States Department of the Interior
National Park Service**

**NATIONAL REGISTER OF HISTORIC PLACES
CONTINUATION SHEET**

Section number _____ Photo _____ Page 1 **PASCO COUNTY COURTHOUSE, DADE CITY
PASCO COUNTY, FLORIDA**

PHOTOGRAPH INVENTORY

1. Pasco County Courthouse, 37918 Meridian Avenue, Dade City
2. Pasco County, Florida
3. Elaine Lund
4. July 7, 2005
5. Janus Research, Tampa, Florida
6. North and West Elevations, Facing Southeast
7. Photo #1 of 15

The information for some items is the same for the remaining photographs, except as noted.

6. Pasco County Bandstand, facing west
7. Photo #2 of 15

6. Pasco County Historical Marker, facing east
7. Photo #3 of 15

6. Pasco County Courthouse Plaza, facing northeast
7. Photo #4 of 15

6. Pasco County Founding Families Plaque, facing southwest
7. Photo #5 of 15

6. Commissioner Sylvia Young Plaque, facing southeast
7. Photo #6 of 15

6. North Elevation, facing south
7. Photo #7 of 15

6. South Elevation, facing northwest
7. Photo #8 of 15

6. West Elevation, facing east
7. Photo #9 of 15

6. East Elevation, facing northwest
7. Photo #10 of 15

**United States Department of the Interior
National Park Service**

**NATIONAL REGISTER OF HISTORIC PLACES
CONTINUATION SHEET**

Section number _____ Photo _____ Page 2

**PASCO COUNTY COURTHOUSE, DADE CITY
PASCO COUNTY, FLORIDA**

- 6. First Story Interior Tile Floor, facing west
- 7. Photo #11 of 15

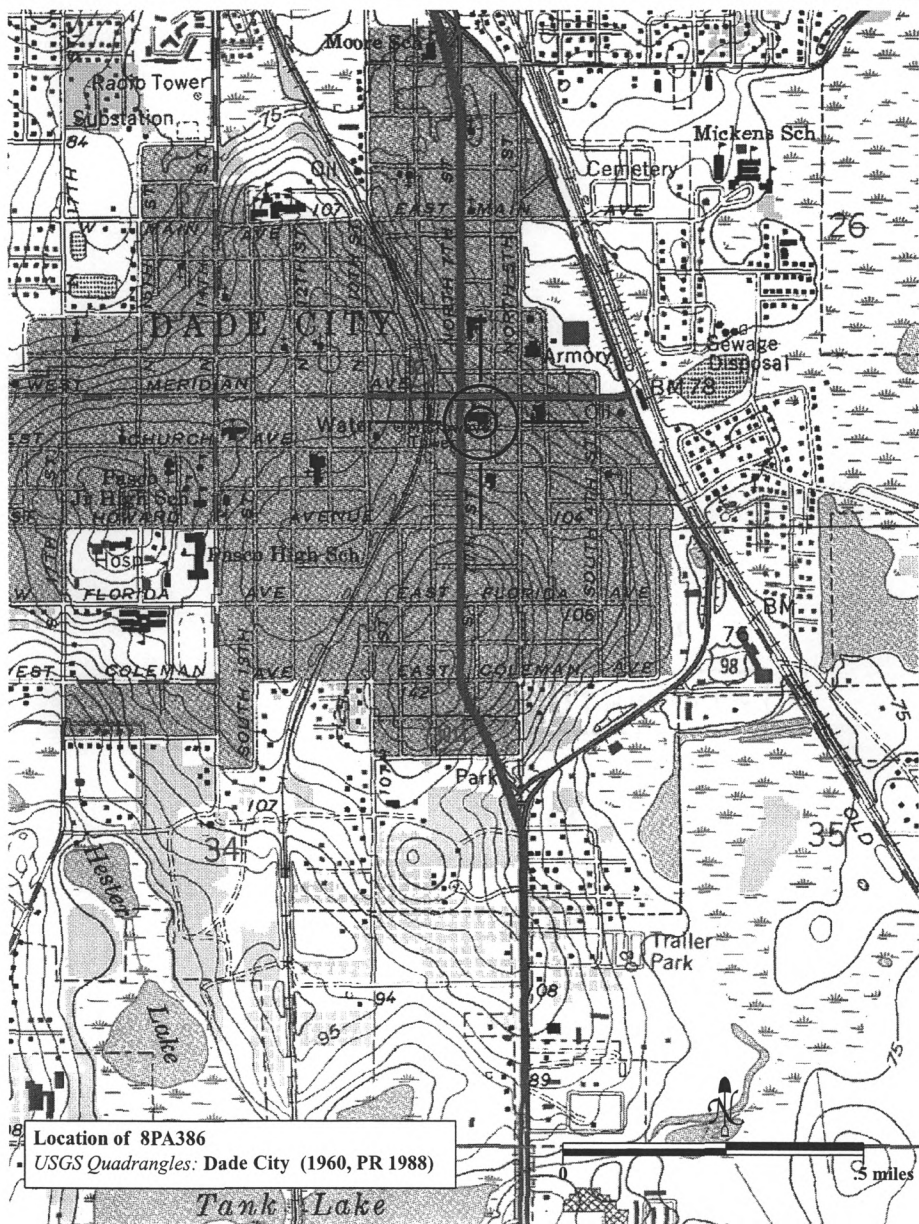
- 6. Interior West Vestibule Stairway, facing southwest
- 7. Photo #12 of 15

- 6. Interior Second Story Board of County Commissioners Meeting Room, facing south
- 7. Photo #13 of 15

- 6. Interior First Story Salvaged Spiral Staircase, facing southeast
- 7. Photo #14 of 15

- 6. Interior First Story Salvaged Fireplace Mantel, facing east
- 7. Photo #15 of 15

USGS QUADRANGLE MAP



Location of 8PA386
 USGS Quadrangles: Dade City (1960, PR 1988)

5 miles

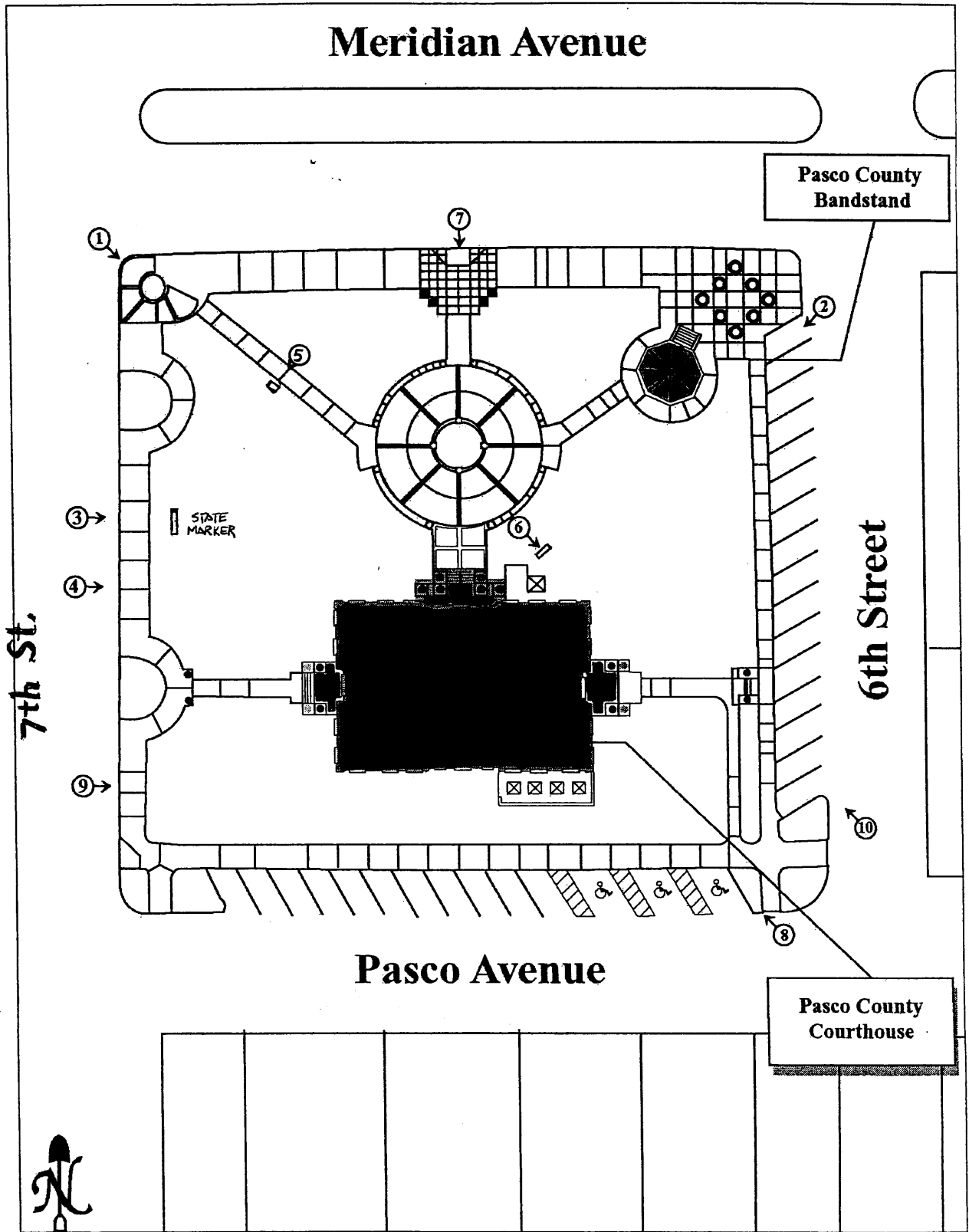
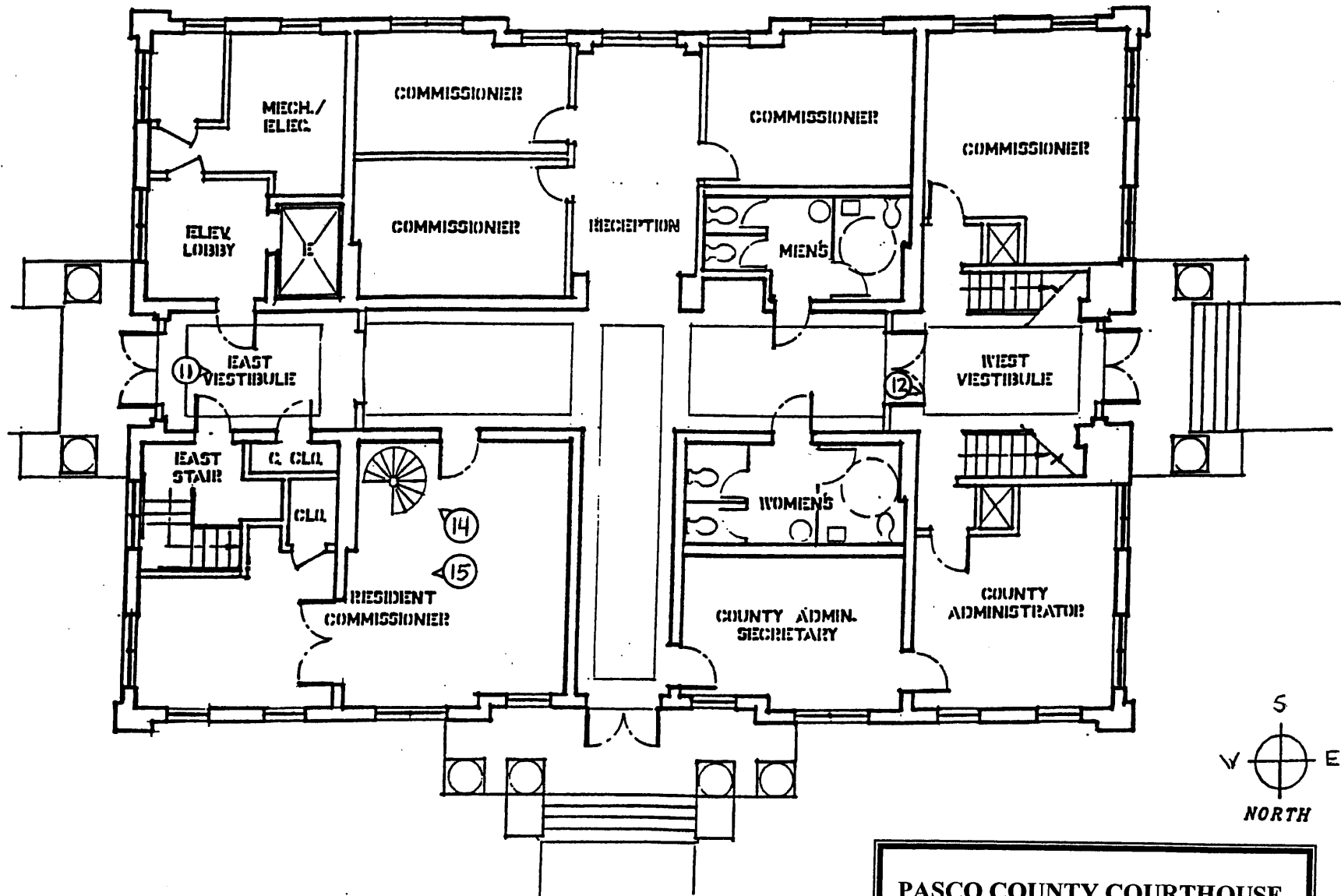

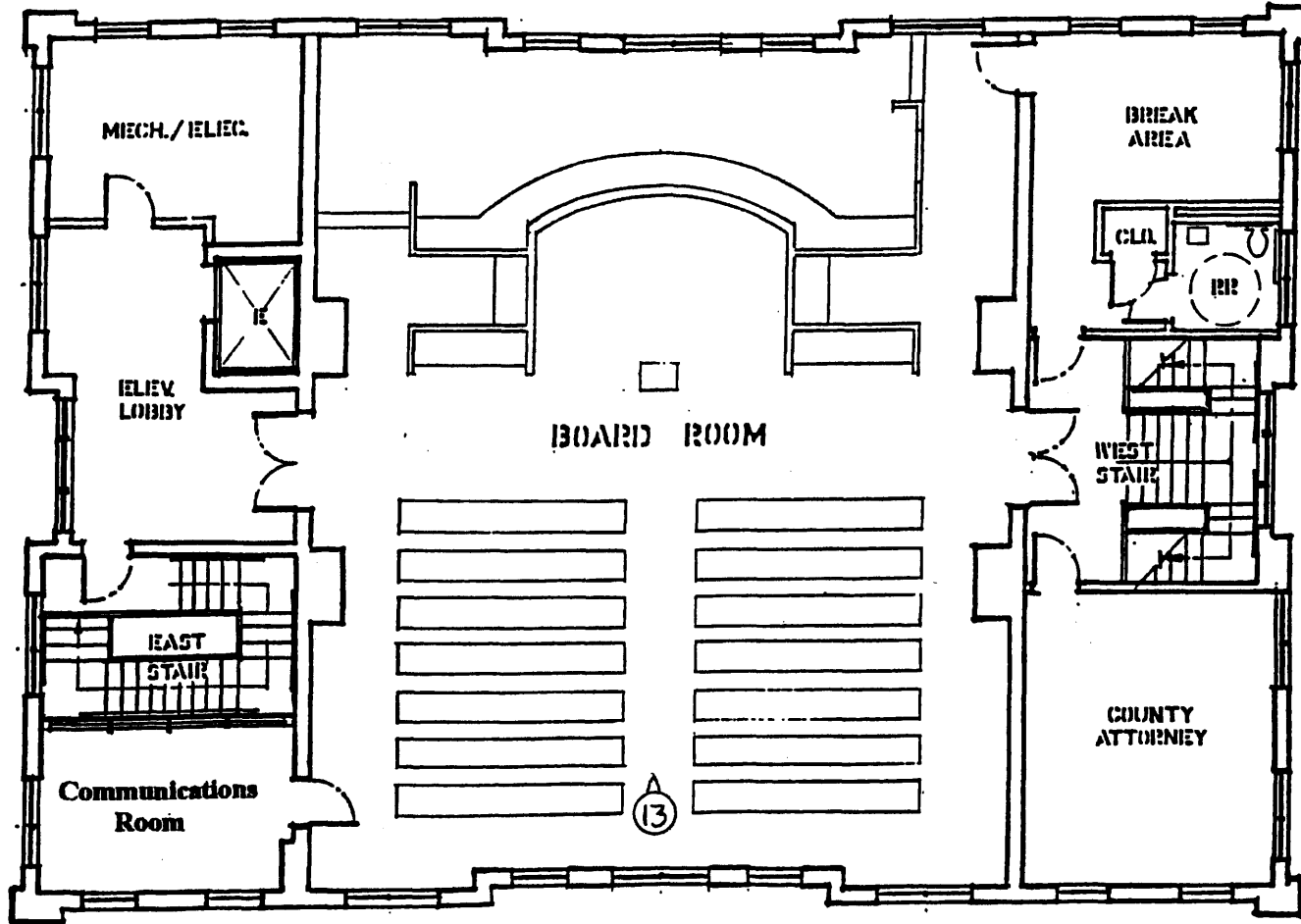


Figure 3 of 3



PASCO COUNTY COURTHOUSE
 Dade City, Pasco County, Florida

First Floor & Photo Diagram 
 not to scale



PASCO COUNTY COURTHOUSE
Dade City, Pasco County, Florida


Second Floor & Photo Diagram 
 not to scale



Figure #1 Pasco County Courthouse, 1920 configuration.
Photographic Collection, Florida State Archive.

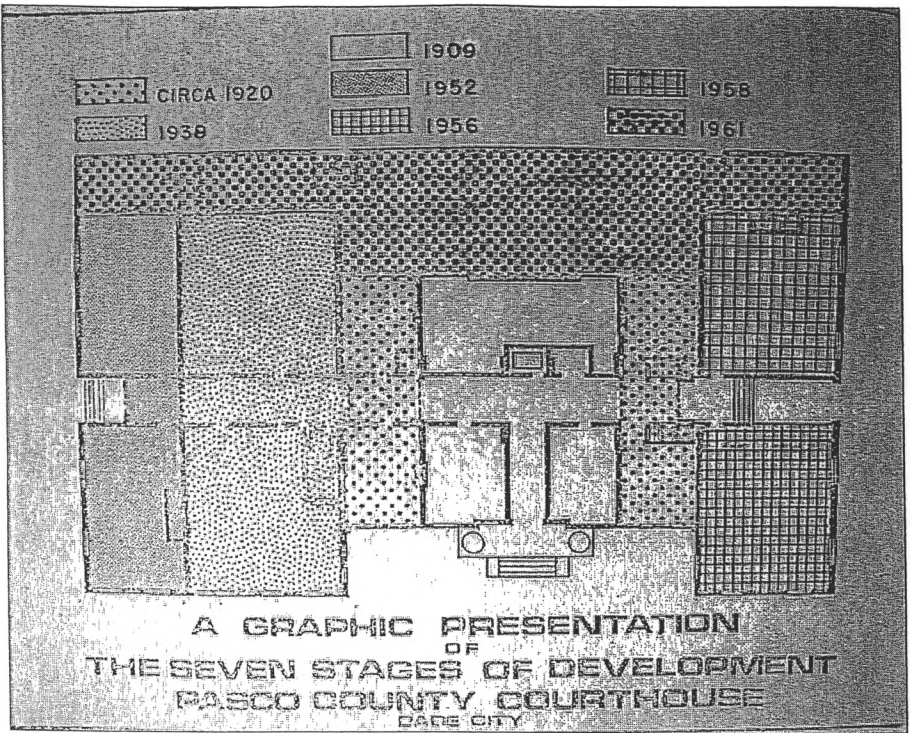


Figure #2 Pasco County Courthouse, floor plan diagram of additions to the building.