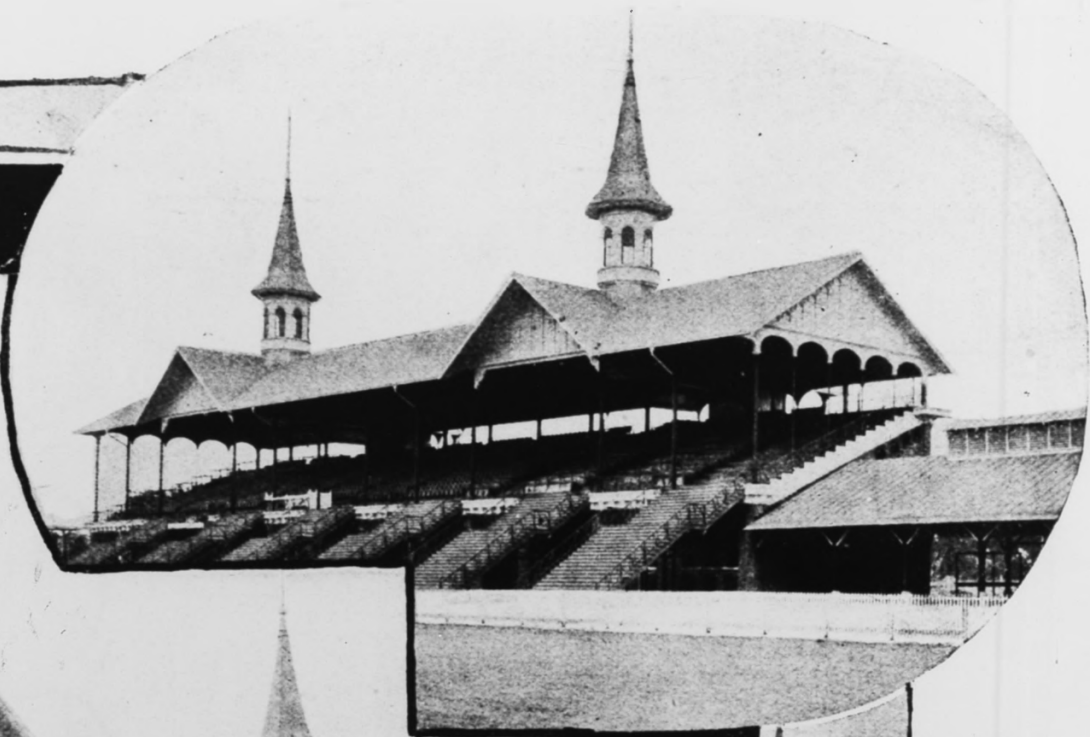




The rear of the grandstand (northwest face). The section with the famous twin spires is the oldest. (Caufield and Shook, 1974)



The original portion of the grandstand shortly after completion in 1895. (Samuel W. Thomas, ed.; Views of Louisville since 1766. [Louisville: Courier-Journal Lithographing Co., 1971])





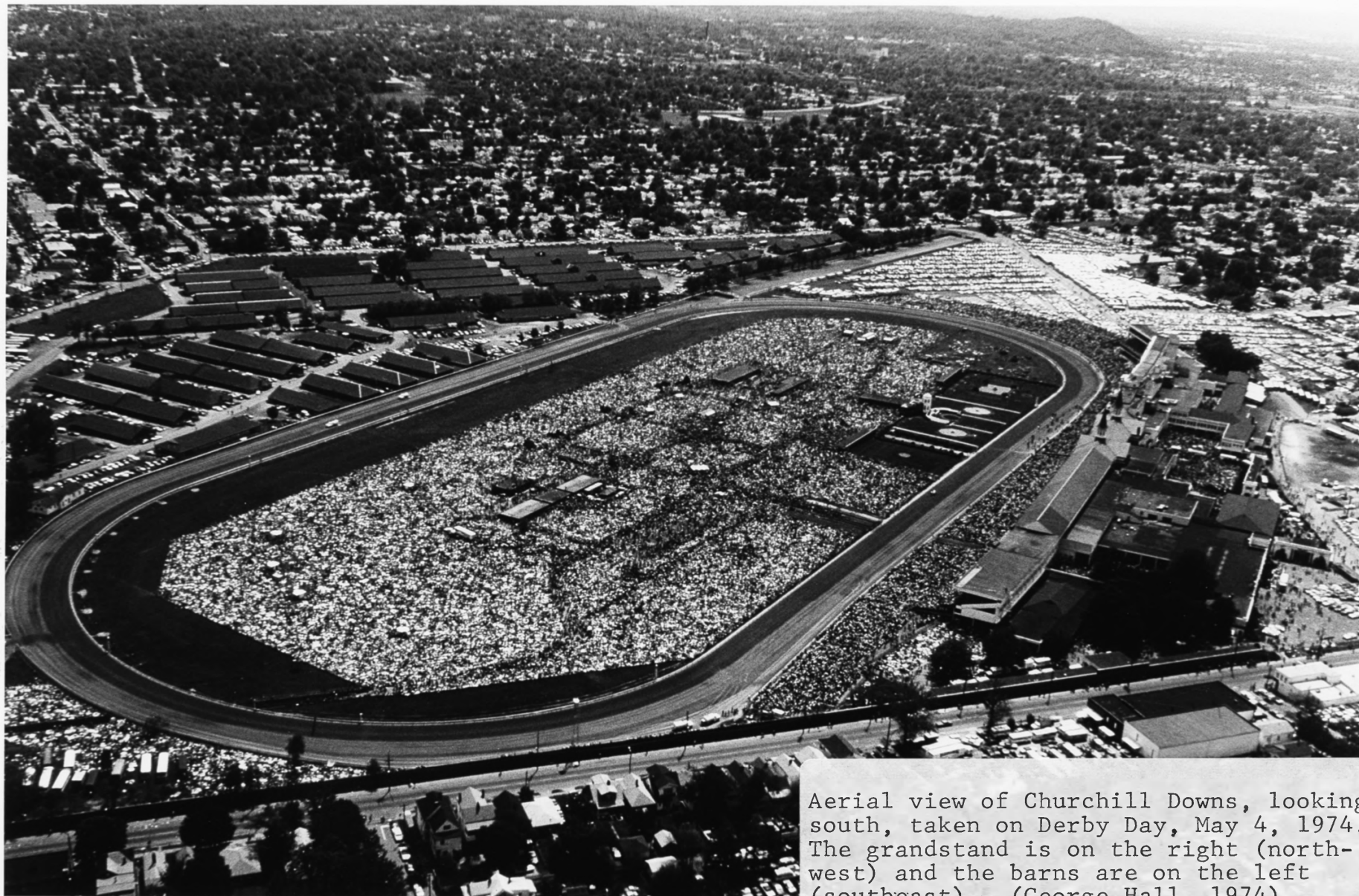
The original grandstand, west of the clubhouse, at Churchill Downs, about 1875. (Samuel W. Thomas, ed., Views of Louisville since 1766 (Louisville; Courier-Journal Lithographing Co., 1971))

GRAND STAND, RACE COURSE.



The clubhouse tulip gardens and tote board (on the left) and the paddock to the right of the tote board. This view is looking northwest. (Caufield and Shook, 1974)





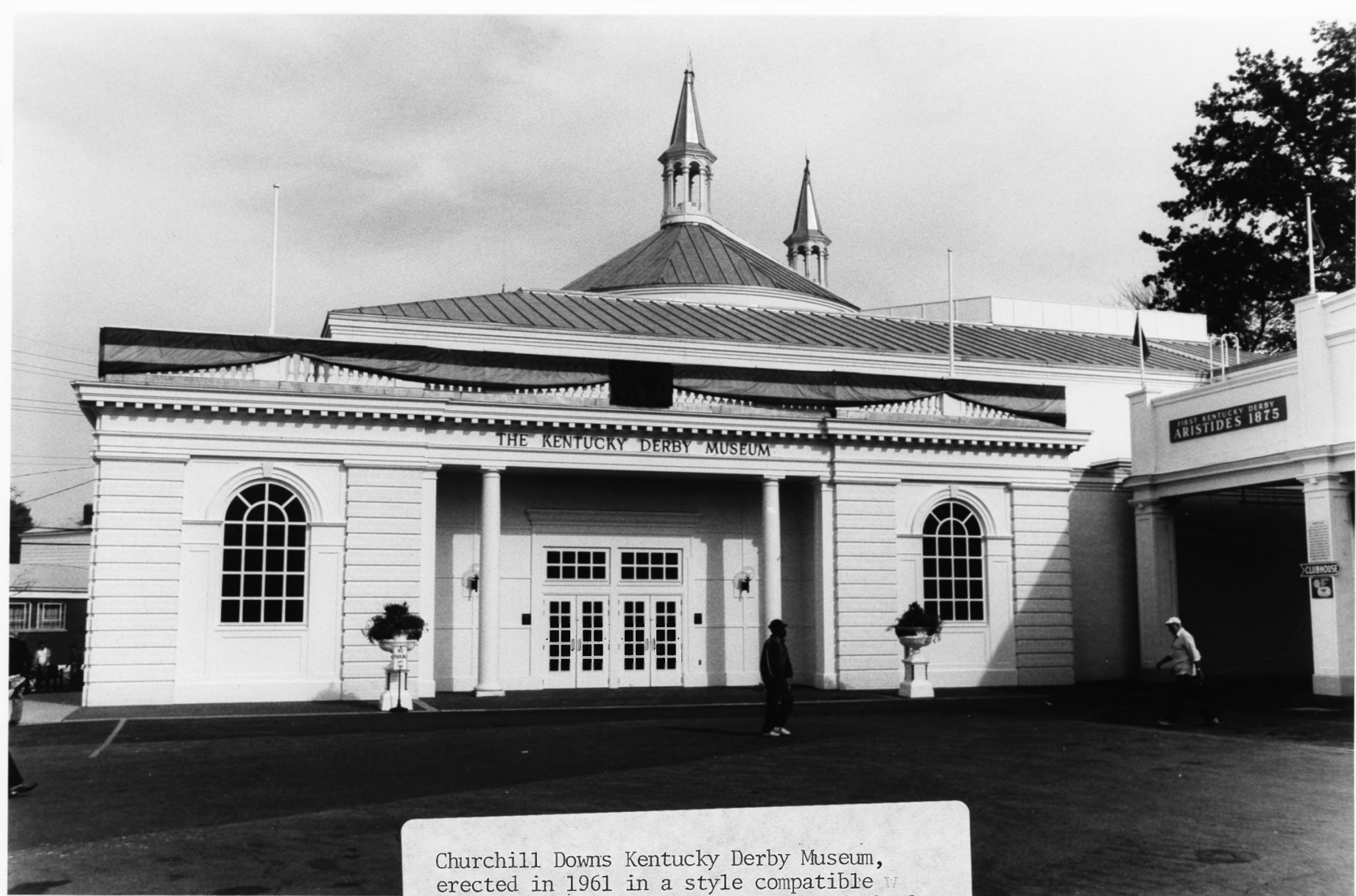
Aerial view of Churchill Downs, looking south, taken on Derby Day, May 4, 1974. The grandstand is on the right (northwest) and the barns are on the left (southeast). (George Hall, 1974)



The original Louisville Jockey Clubhouse about 1875. (Samuel W. Thomas, ed., Views of Louisville since 1766. (Louisville: Courier-Journal Lithographing Co., 1971)



1892



Churchill Downs Kentucky Derby Museum, erected in 1961 in a style compatible with other features. (Caufield and Shook, 1974)





View of typical horse barn at Churchill Downs. (Charlotte Schneider, Kentucky Heritage Commission, 1978)



The infield presentation stand and tote boards (northwest elevation) (Churchill Downs, 1985)



DERBY  
1985

EXACTA		WILL PAY		
		&		
PLACE	SHOW	ODDS		
.	.	1	5	9
.	.	2	6	10
.	.	3	7	11
TRACK CONDITION	.	4	8	12
TIME of DAY	MIN to POST	RACE		

EXACTA		WILL PAY		
		&		
ODDS			RESULTS	WIN
1	5	9	1 <sup>ST</sup>	.
2	6	10	2 <sup>ND</sup>	.
3	7	11	3 <sup>RD</sup>	.
4	8	12	4 <sup>TH</sup>	.
RACE	MIN to POST	TIME of DAY		



The main grandstand entrance (northwest facade). (Caufield and Shook, 1974)





The clubhouse entrance and garden  
(looking southeast). (Caufield and  
Shook, 1974)