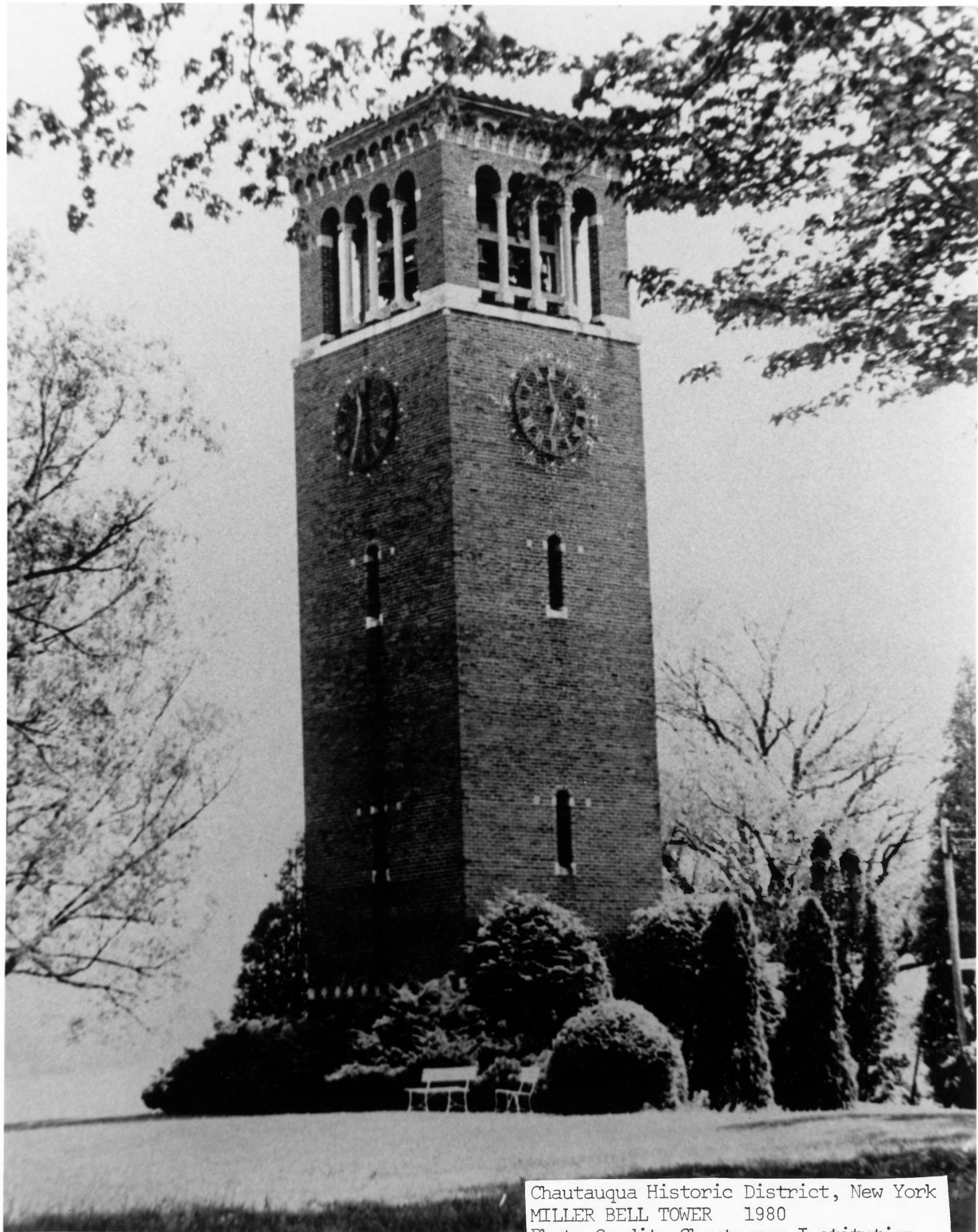




Chautauqua Historic District, New York
CHAPEL OF THE GOOD SHEPHERD 1980
Photo Credit: Chautauqua Institution

GORDON MALLORY



Chautauqua Historic District, New York
MILLER BELL TOWER 1980
Photo Credit: Chautauqua Institution



Chautauqua Historic District, New York
FRANCES WILLARD HOUSE 1980
Photo credit: Chautauqua Institution




Chautauqua Historic District, New York
PAULINE FANCHER COTTAGE. 1980

Photo credit: Chautauqua Institution



Chautauqua Historic District, New York
OCTAGON COTTAGE 1980
Photo Credit: Chautauqua Institution

A black and white photograph of a two-story cottage with a gambrel roof and a balcony, surrounded by trees and a winding path. The house features a prominent front porch with a decorative railing and a smaller porch on the right side. The path leads from the foreground towards the entrance of the house. The overall scene is peaceful and well-maintained.

Chautauqua Historic District, New York
LEWIS MILLER COTTAGE. 1980
Photo Credit: Chautauqua Institution



Chautauqua Historic District, New York
HALL OF PHILOSOPHY 1980
Photo credit: Chautauqua Institution



Chautauqua Historic District, New York
AMPHITHEATER 1980
Photo credit: Chautauqua Institution



Chautauqua Historic District, New York
HALL OF CHRIST. 1980
Photo credit: Chautauqua Institution



Chautauqua Historic District, New York
UNITED METHODIST HOUSE 1980
Photo credit: Chautauqua Institution



Chautauqua Historic District, New York
BAIRD WINEMAN COTTAGE. 1980
Photo Credit: Chautauqua Institution



Chautauqua Historic District, New York

FOLLINSBEE COTTAGE 1980

Photo credit: Chautauqua Institution



REGENCY
PROPERTY
PLAZA

Chautauqua Historic District, New York
UNITED METHODIST MISSIONARY HOME 1980

Photo Credit: Chautauqua Institution



Chautauqua Historic District, New York

MCKEE KARSLAKE COTTAGE. 1980

Photo Credit: Chautauqua Institution



Chautauqua Historic District, New York

NORMAL HALL. 1980

Photo Credit: Chautauqua Institution



Chautauqua Historic District, New York

NORTON HALL. 1928 1980

Photo credit: Chautauqua Institution



Chautauqua Historic District, New York

FRED THEURER COTTAGE. 1980

Photo Credit: Chautauqua Institution