

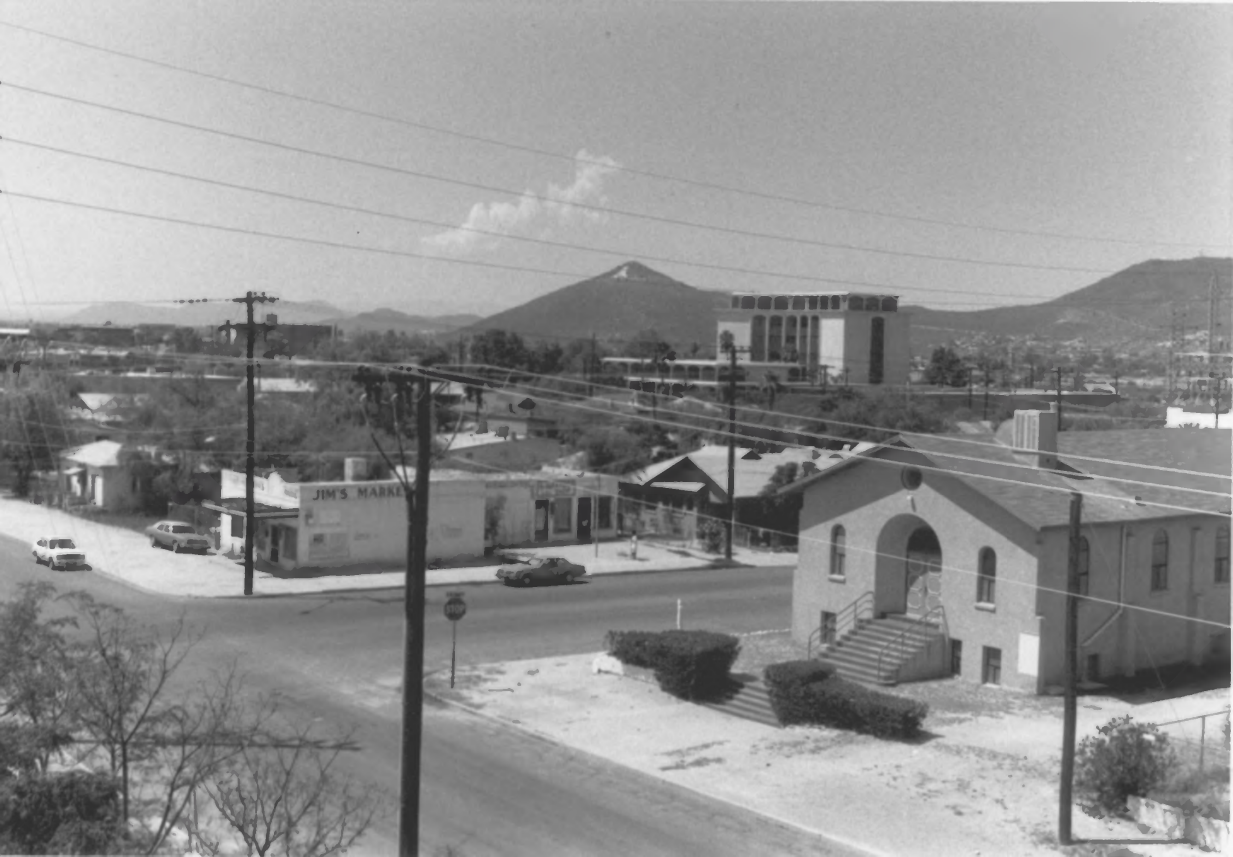


SEP 28 1967

BIRD'S EYE VIEW OF NEIGHBORHOOD/LOOKING DOWNTOWN

1 of 21

- 1) JOHN SPRING NEIGHBORHOOD MRA - HISTORIC DISTRICT
- 2) TUCSON, AZ
- 3) ELIZA HUSBAND
- 4) 7/87
- 5) SHPO ARCHIVES
NEG. JSNOM-2-7
- 6) → S side rd b/w 4 st looking S



JIM'S MARKET

STOP

BIRD'S EYE VIEW OF NEIGHBORHOOD W/PHILLIP'S CHAPEL

#2 of 21

1) JOHN SPRING NEIGHBORHOOD MRA - HISTORIC DISTRICT

2) TUCSON AZ

3) ELIZA HUSBAND

4) 7/07

5) SHPO ARCHIVES

NEG. JSNOM-2-8

6) → NW cor N 9 AV 2nd W A looking SW



BIRD'S-EYE VIEW, JOHN SPRING NEIGHBORHOOD

3 of 21

- 1) JOHN SPRING NEIGHBORHOOD NRA - HISTORIC DISTRICT
- 2) TUCSON, AZ
- 3) ELIZA HUSBAND
- 4) 7/87
- 5) SHPO ARCHIVES

NEG. JSNOM-2-10

- 6) → W side 700 bl N 9 AV looking NW



TEXACO

FORMER TOURIST COURT, LOOKING DOWNTOWN

#4 of 21

- 1) JOHN SPRING NEIGHBORHOOD NRA - HISTORIC DISTRICT
- 2) TUCSON, AZ
- 3) ELIZA HUSBAND
- 4) 7/97
- 5) SHPO ARCHIVES
NEG. JSTIOM-1-2/2A
- 6) → S side 00 b1 W 5 ST looking SE



STREETSCAPE W/
SPANISH N.E. CHURCH, ADOBE CHAPEL

82
SEP 28

#5 of 21

- 1) JOHN SPRING NEIGHBORHOOD MIRA - HISTORIC DISTRICT
- 2) TUCSON, AZ
- 3) ELIZA HUSBAND
- 4) 7/87
- 5) SHPO ARCHIVES
NEG. JSNOM-3-5A/6
- 6) → NW cor N 9 Av at W 5 St looking NW



N. 10 AV STREETSCAPE

#6 of 21

- 1) JOHN SPRING NEIGHBORHOOD MRA - HISTORIC DISTRICT
- 2) TUCSON, AZ
- 3) ELIZA HUSBAND
- 4) 7/87
- 5) SAPO ARCHIVES
NEG. JSNOM-1-5A
- 6) → W side 700 to N 10 AV looking NW

SEP 28 1988



MT. CALVARY CHURCH & PASTOR'S RESIDENCE

7 of 21

- 1) JOHN SPRING NEIGHBORHOOD NRA - HISTORIC DISTRICT
- 2) TUCSON, AZ
- 3) ELIZA HUSBAND
- 4) 7/87
- 5) SHPO ARCHIVES
NEW. JSNOM-3-22A/23
- 6) → S side 200 ft W 4 St looking SE

SEP 28 1988



"IDEAL NEGRO HOME" OF YANCY THESIS (1933)

8 of 21

- 1) JOHN SPRING NEIGHBORHOOD MRA - JSN 257 IN HISTORIC DISTRICT
- 2) TUCSON, AZ
- 3) HARRIS SOBIN
- 4) 5/85
- 5) SHPO ARCHIVES
NEG. JSN-C-17
- 6) SE cor W University 2nd N 10 AV looking SE

SEP 28 1988



FRIENDSHIP MISSIONARY BAPTIST CHURCH

MODERN FRIENDSHIP BAPTIST CHURCH

9 of 27

- 1) JOHN SPRING NEIGHBORHOOD WEA - JSN 164 IN HISTORIC DISTRICT
- 2) TUCSON, AZ
- 3) F. HERRAN / NEIGHBORHOOD ASSN.
- 4) 3/85
- 5) SHPO ARCHIVES
NEG. JSN 3-35A/36
- 6) → E side 900 to N 11 AV looking SE

APR 28 1988



PAUL DUNBAR / JOHN SPRING SCHOOL

#10 of 27

- 1) JOHN SPRING NEIGHBORHOOD URA - JSM-161 IN HISTORIC DISTRICT
- 2) TUCSON, AZ
- 3) HARRIS SOBIN
- 4) 3/85
- 5) SHPO ARCHIVES
NEG. JSM-19-2/2A
- 6) → W side 900 N 11th Av looking W



CHURCH - & - SCHOOL SQUARE

11 of 21

- 1) JOHN SPRING NEIGHBORHOOD MRA - HISTORIC DISTRICT
- 2) TUCSON, AZ
- 3) ELIZA HUSBAND
- 4) 7/87
- 5) SHPO ARCHIVES
NEG. JSNOM-2-15
- 6) → W side 900 N 11 AV looking SW

SEP 28 1989



ADOBE ROW HOUSE STREETSCAPE

12 of 21

- 1) JOHN SPRING-NEIGHBORHOOD URA - HISTORIC DISTRICT
- 2) TUESON, AZ
- 3) HARRIS SOPIN
- 4) 3/85
- 5) SHPO ARCHIVES
NEG. JSN-AA-34
- 6) → W side 800 to N Alder Av looking SW

SEP 28 1988



N. PERRY AVE. ("PENN PLACE")

#13 of 21

- 1) JOHN SPRING NEIGHBORHOOD URA-HISTORIC DISTRICT
- 2) TUCSON, AZ
- 3) ELIZA HUSBAND
- 4) 7/87
- 5) SHPO ARCHIVES
NEG. J5N0U-3-7A/E
- 6) → 900 to N Perry looking SW

SEP 28 1988



N. PERRY AVE. ("PENN PLACE")

#14 of 21

- 1) JOHN SPRING NEIGHBORHOOD NRA - HISTORIC DISTRICT
- 2) TUCSON, AZ
- 3) ELIZA HUSBAND
- 4) 7/87
- 5) SHPO ARCHIVES
NEG. JSNOM-3-8A/9
- 6) → 1000 W. N. Perry Locking NW

SEP 28 1988



N. PERRY AVE. ("PENN PLACE")

#15 of 21

- 1) JOHN SPRING NEIGHBORHOOD HISTORIC DISTRICT
 - 2) TUCSON AZ
 - 3) ELIZA HUSBAND
 - 4) 7/87
 - 5) SHPO ARCHIVES
- NEG. JSNOU-3-19A/20
- 6) → 1000 bt N Perry Av looking S

SEP 28 1988



DANIELS HOUSE

#18 of 21

- 1) JOHN SPRING - NEIGHBORHOOD MRA - AC-55 IN HISTORIC DISTRICT
- 2) TUCSON, AZ
- 3) HARRIS SOBIN
- 4) 3/85
- 5) SHPO ARCHIVES
NEG. JSN-21-10
- 6) → E side 600 to N 9 AV looking E



MACEDONIA
CHURCH - GOD - CHRIST
SUNDAY SCH. 9:45
MORN WORSHIP 11:00
Y. P. W. W. 6:30
EVEN WORSHIP 7:30
BIBLE BAND 6:30
EVANGELISTIC SERV. 7:30
PASTOR R. MAYFIELD

SPANISH METHODIST EPISCOPAL CHURCH

#19 of 21

- 1) JOHN SPRING NEIGHBORHOOD URA - AC-31
 - 2) TUCSON, AZ
 - 3) HARRIS SOBIN
 - 4) 3/85
 - 5) SAPO ARCHIVES
NEG. JSN-21-18
- NW corner N 9 Av & W 5 St looking NW



MT. CALVARY MISSIONARY BAPTIST CHURCH

#20 of 21

- 1) JOHN SPRING NEIGHBORHOOD MRA - AC-17 IN HISTORIC DISTRICT
- 2) TUCSON, AZ
- 3) HARRIS SUBIN
- 4) 3/85
- 5) SHPO ARCHIVES
NEG. 48N-21-19
- 6) → W side 600th N 10 AV looking NW



Holy Family Church

HOLY FAMILY CHURCH & RECTORY

21 of 21

- 1) JOHN SPRING-NEIGHBORHOOD MRA - JSN-163 IN HISTORIC DISTRICT
- 2) TUCSON, AZ
- 3) HARRIS SOBINT
- 4) 3/85
- 5) SHPO ARCHIVES
NEWS JSN-11-9A/10
- 6) → N side 300 W University Blvd looking N