



Hamm Building
Ramsey County, MN
Saari & Forrai Photography (photographer)

May, 1996

Saari & Forrai Photography, Mpls. MN (location of negative)

Canted Corner

Facing Northeast



FOR LEASE
RETAIL SPACE
824-2100

WELCOME
Winter
Carnival
VISITORS
Enjoy
OUR
Fabulous
HOT ADS

Park
Separate

SEVENTH BLVD

SEVENTH BLVD
P
SEVENTH BLVD



Hamm Building
Ramsey County, MN

Saari: Forrai Photography (photographer)

May, 1996

Saari: Forrai Photography, Mpls., MN (location of negative)

North Elevation

Facing Southeast




Park Square
The Women
The Crucible
Broken Class
Mornings at Noon
291-7005

MISSISSIPPI AURALS & ADRE

Hamm Building
Ramsey County, MN

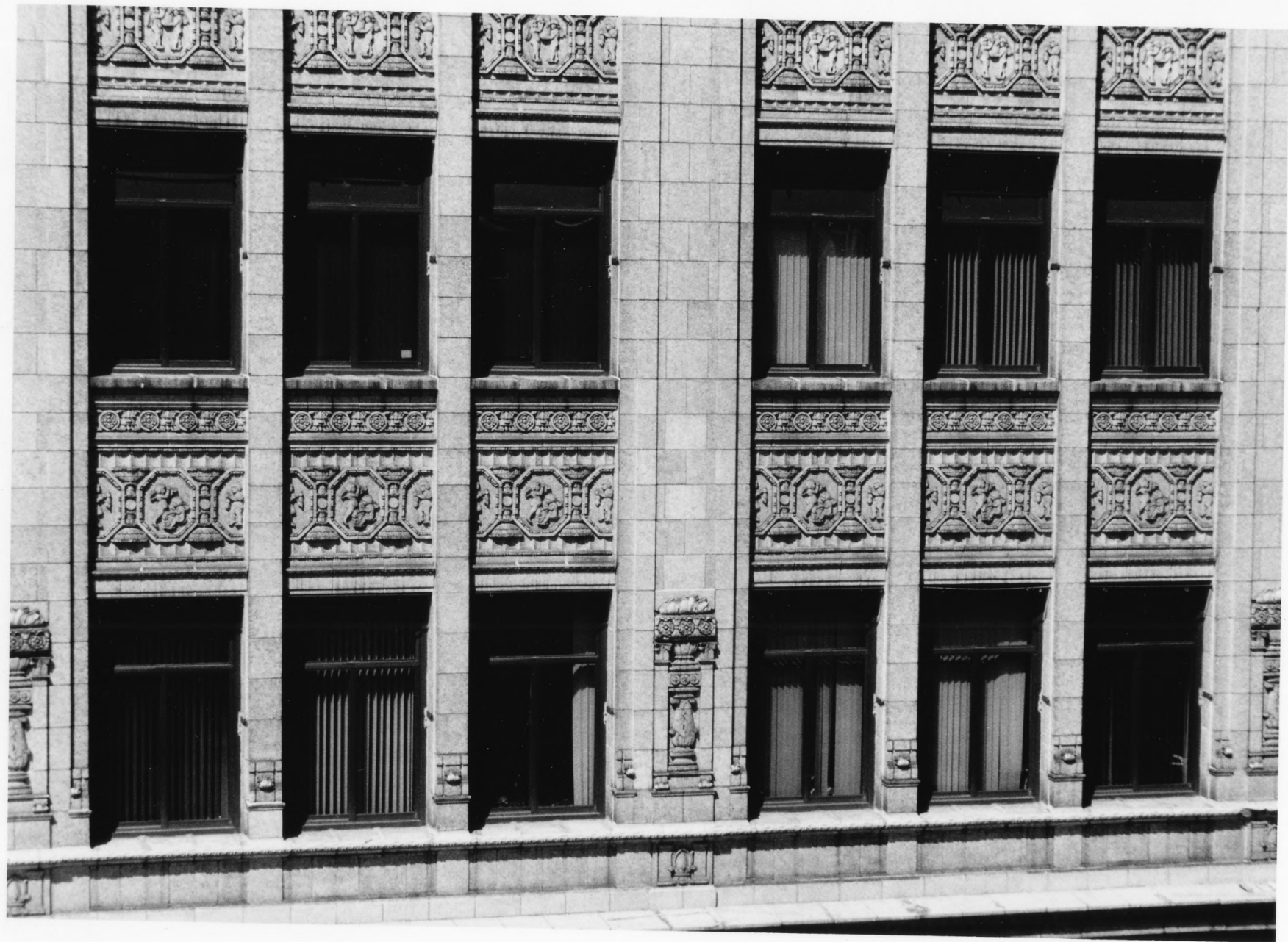
Saari & Forrai Photography (photographer)

May, 1996

Saari & Forrai Photography, Mpls. MN (Location of neg)

North Elevation

Facing Southwest



HAMM BUILDING

RAMSEY COUNTY, MINNESOTA

GABRIELLE BOURGERIE, (Photographer)

MAY, 1996

OERTEL ARCHITECTS, MPLS, MN (location of negative)

TERRA COTTA DETAIL

FACING NORTH



HAMM BUILDING

RAMSEY COUNTY, MN

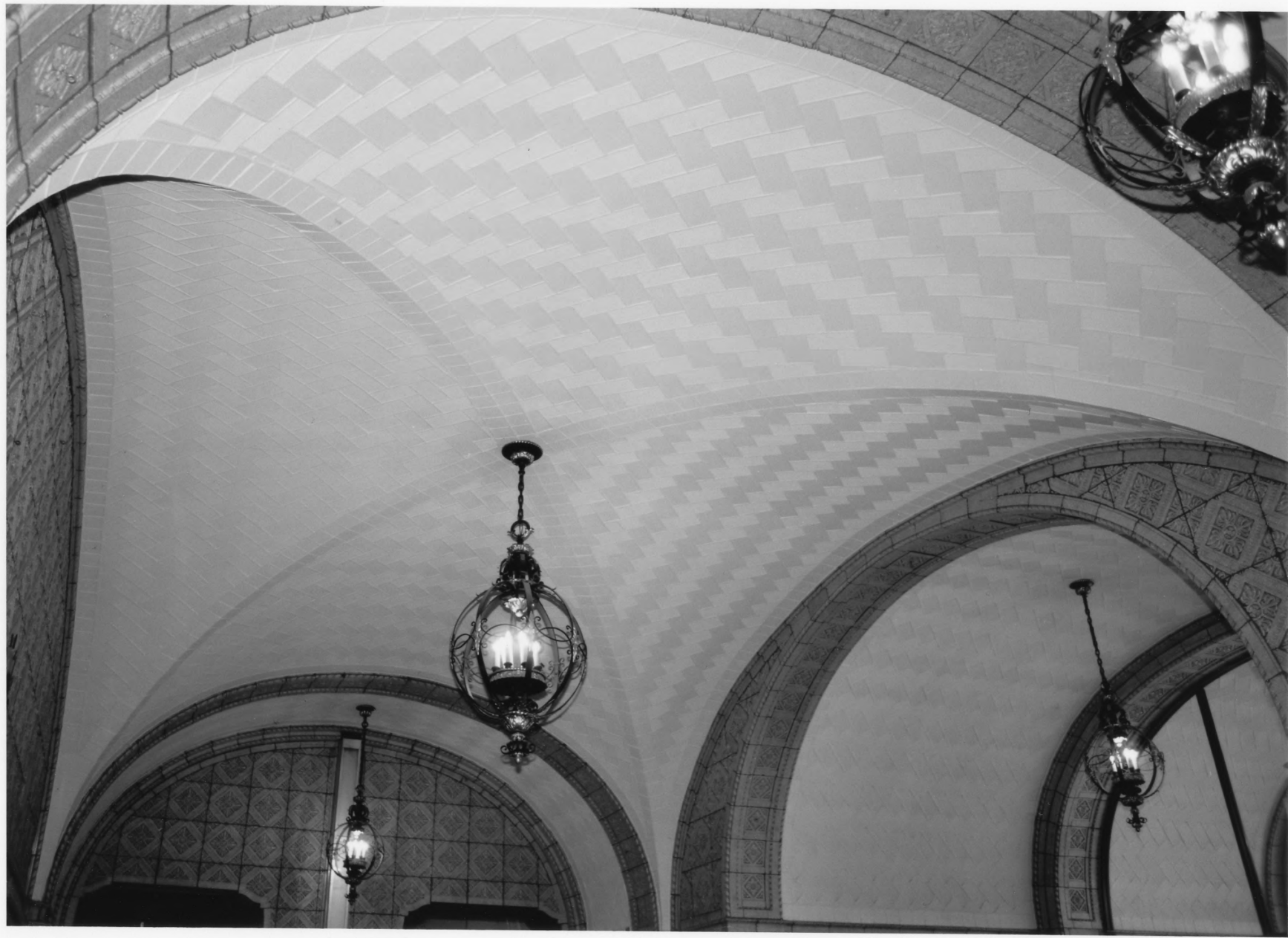
GABRIELLE BOURGERIE (photographer)

MAY, 1996

OERTEL ARCHITECTS, MPLS., MN (location of negative)

TYPICAL STOREFRONT

FACING EAST



HAMM BUILDING

RAMSEY COUNTY, MN

GABRIELLE BOURGERIE (photographer)

MAY, 1996

OERTEL ARCHITECTS, MPLS., MN (location of negative)

MAIN LOBBY- GUSTAVINO TILE VAULTED CEILING

FACING UP



HAMM BUILDING

RAMSEY COUNTY, MINNESOTA

GABRIELLE BOURGERIE, (photographer)

MAY, 1996

OERTEL ARCHITECTS. MPLS, MN (location of negative)

MAIN LOBBY

FACING NORTH



Hamm Building

Ramsey County, MN

Gabrielle Bourgerie (photographer)

May, 1996

Oertel Architects, Mpls., MN (location of negative)

Main Lobby

Facing South



HAMM BUILDING

RAMSEY COUNTY, MN

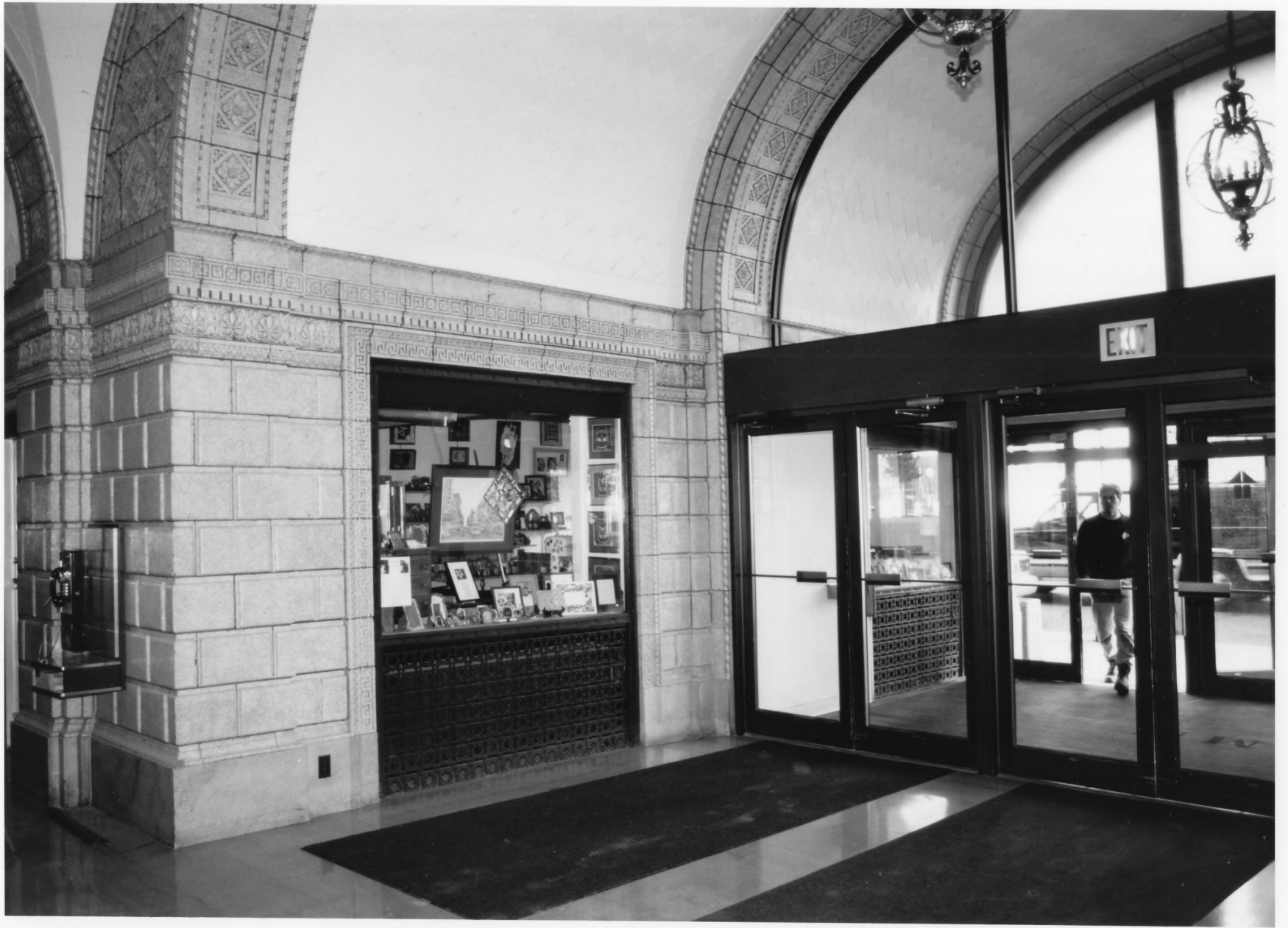
GABRIELLE BOURBERIE (photographer)

MAY 1996

OERTEL ARCHITECTS, MPLS., MN (location of negative)

MAIN LOBBY - ELEVATOR BAYS

FACING EAST



Hamm Building
Ramsey County, MN
Gabrielle Bourgerie, (photographer)

May, 1996

Oertel Architects, Mpls., MN (location of negative)

Main Lobby

Facing Southwest



WITCHER
CONSTRUCTION CO.
1612/830-9000

Hamm Building
Ramsey County, MN

Saari & Forrai Photography (photographer)

May, 1996

Saari & Forrai Photography, Mpls, MN (location of negative)

South Elevation

Facing North



Hamm Building
Ramsey County, MN
Saari & Forrai Photography (photographer)
May, 1996

Saari & Forrai Photography, Mpls., MN (location of negative)
West Elevation - northern section
Facing East



Hamm Building
Ramsey County, MN
Saari & Forrai Photography (photographer)

May, 1996

Saari & Forrai Photography, Mpls., MN (location of negative)

West Elevation - southern section

Facing East