



215 S. San Pedro (S)(\*),  
225 S. San Pedro (S), and  
233 S. San Pedro (Sup). Looking southeast.

Las Cruces Original Townsite  
(Mesquite) Historic District.

Las Cruces, Dona Ana County

Betsy Swanson

New Mexico Historic Preservation Division

April, 1984

*3/11/85*



340 E. Lohman and  
502 S. San Pedro (S)(\*). Looking south.

Las Cruces Original Townsite  
(Mesquite) Historic District.  
Las Cruces, Dona Ana County

Betsy Swanson

New Mexico Historic Preservation Division  
April, 1984





506 E. Griggs and  
101 S. Mesquite (S)(\*). Looking southeast.

Las Cruces Original Townsite  
(Mesquite) Historic District.  
Las Cruces, Dona Ana County

Betsy Swanson

New Mexico Historic Preservation Division

April, 1984



518 E. Griggs (Sup), and  
516 E. Griggs (S)(\*). Looking south.

Las Cruces Original Townsite  
(Mesquite) Historic District.  
Las Cruces, Dona Ana County

Betsy Swanson

New Mexico Historic Preservation Division  
April, 1984





128 N. Campo (S)(\*), 114 N. Campo (NC),  
108 N Campo (Sup). Looking east.

Las Cruces Original Townsite  
(Mesquite) Historic District.  
Las Cruces, Dona Ana County

Betsy Swanson

New Mexico Historic Preservation Division  
April, 1984



LAW OFFICES

215-221 S. Campo (C), 229 S. Campo (C),  
233-237-239 S. Campo (S), Looking southeast.

Las Cruces Original Townsite  
(Mesquite) Historic District.  
Las Cruces, Dona Ana County

Betsy Swanson

New Mexico Historic Preservation Division  
April, 1984





308 E. Bowman (rear)(Sup), 317-319 S.Campo (S),  
329 S. Campo (S)(\*). Looking northeast.

Las Cruces Original Townsite  
(Mesquite) Historic District.

Las Cruces, Dona Ana County

Betsy Swanson

New Mexico Historic Preservation Division

April, 1984



218 N. San Pedro (S), 202-204 N. San Pedro (C),  
405-409-413-421 E. Organ (S). Looking northeast.

Las Cruces Original Townsite  
(Mesquite) Historic District.

Las Cruces, Dona Ana County

Betsy Swanson

New Mexico Historic Preservation Division

April, 1984





309 E. Organ (S)(\*), 331 E. Organ (S),  
333-335-339 E. Organ (S)(\*). Looking northwest.

Las Cruces Original Townsite  
(Mesquite) Historic District.

Las Cruces, Dona Ana County

Betsy Swanson

New Mexico Historic Preservation Division

April, 1984



422 E. Bowman (S), 418 E. Bowman (Sup),  
305 S. San Pedro (rear) (S)(\*).

Looking southwest.

Las Cruces Original Townsite  
(Mesquite) Historic District.

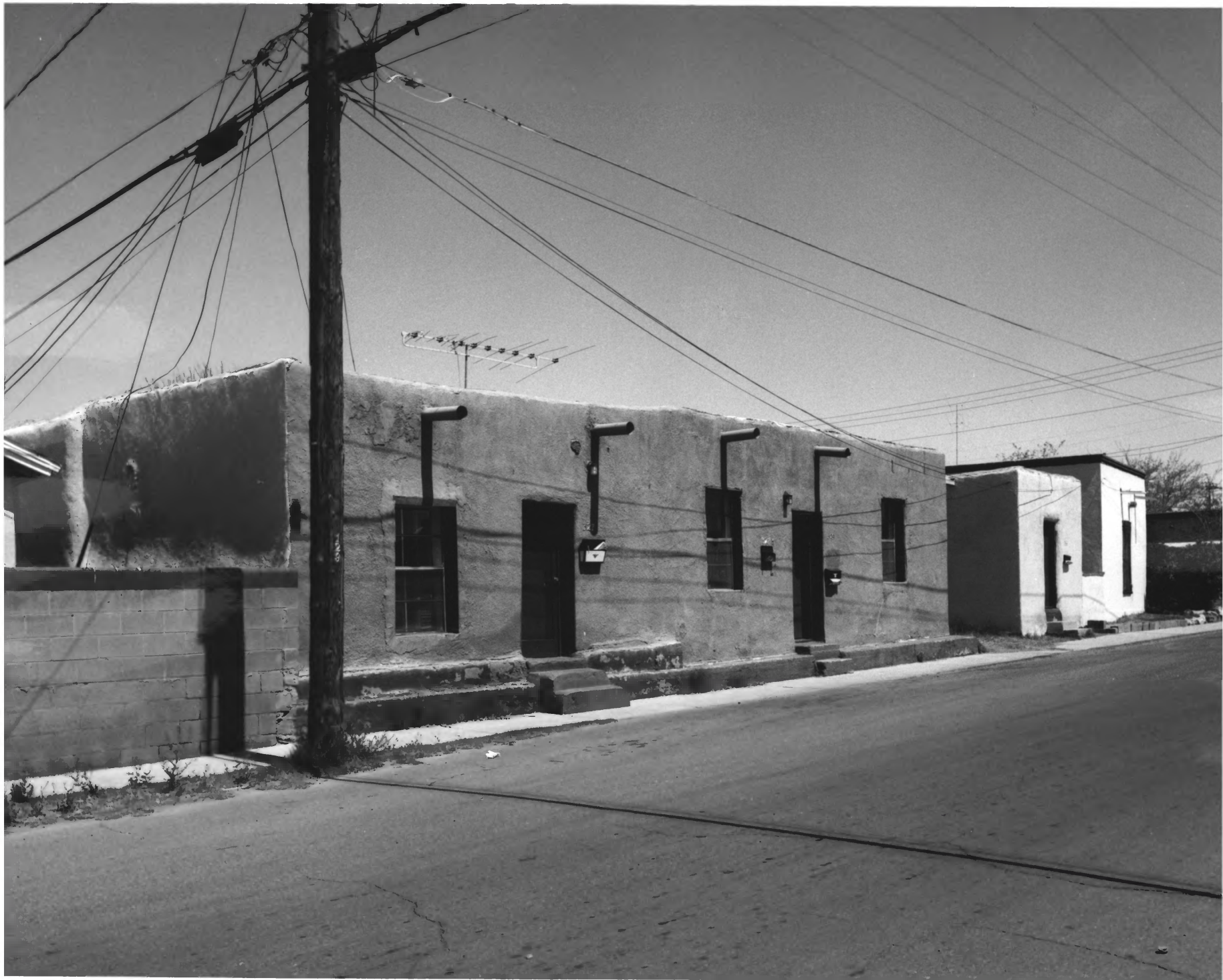
Las Cruces, Dona Ana County

Betsy Swanson

New Mexico Historic Preservation Division

April, 1984





327-327½-329 E. May (S), 333 E. May (S),  
339 E. May (S)(\*). Looking northeast.

Las Cruces Original Townsite  
(Mesquite) Historic District.

Las Cruces, Dona Ana County

Betsy Swanson

New Mexico Historic Preservation Division

April, 1984



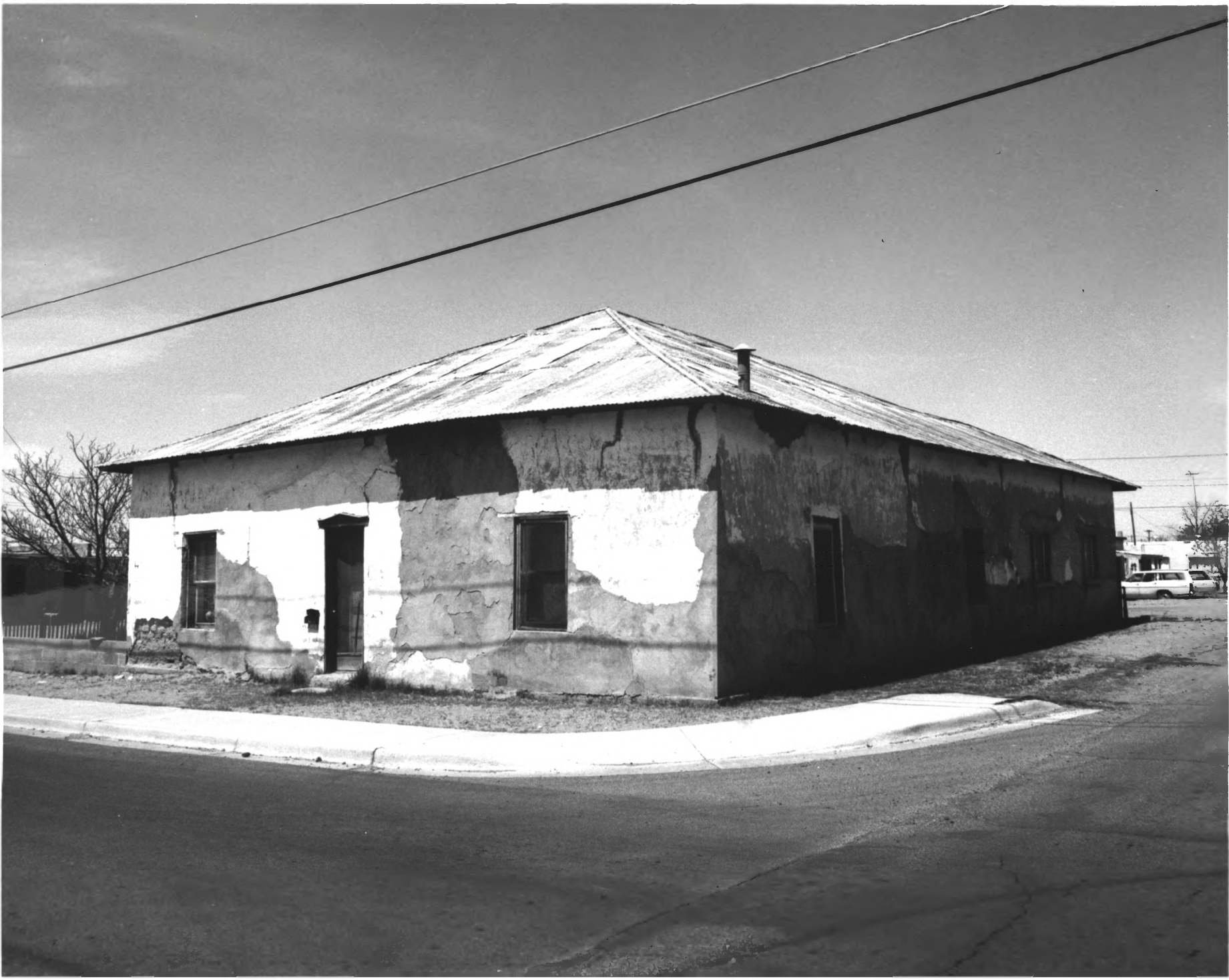
730 S. San Pedro (Sup), 710 S. San Pedro (S),  
706-700 S. San Pedro (S), 640-638 S. San  
Pedro (C). Looking northwest.

Las Cruces Original Townsite  
(Mesquite) Historic District.  
Las Cruces, Dona Ana County

Betsy Swanson

New Mexico Historic Preservation Division  
April, 1984





545 E. Bowman (S)(\*).

Looking northwest.

Las Cruces Original Townsite  
(Mesquite) Historic District.

Las Cruces, Dona Ana County

Betsy Swanson

New Mexico Historic Preservation Division

April, 1984



195 N. Mesquite (Sup), 130 N. Mesquite (Sup),  
118 N. Mesquite (Sup), 108 N. Mesquite (S),  
101 S. Mesquite (S)(\*). Looking southeast.

Las Cruces Original Townsite  
(Mesquite) Historic District.

Las Cruces, Dona Ana County

Betsy Swanson

New Mexico Historic Preservation Division

April, 1984







443 E. May (S)(\*), 127 S. Mesquite (S)(\*).  
Looking northeast

Las Cruces Original Townsite  
(Mesquite) Historic District.  
Las Cruces, Dona Ana County

Betsy Swanson

New Mexico Historic Preservation Division  
April, 1984

DONA ANA CAFE  
SPECIALIZING IN MEXICAN FOOD



125 S. Campo (NC), 325 E. May (NC),  
327-327½-399 E. May (S), 333 E. May (S),  
339 E. May (S)(\*). Looking northeast.

Las Cruces Original Townsite  
(Mesquite) Historic District.  
Las Cruces, Dona Ana County

Betsy Swanson

New Mexico Historic Preservation Division  
April, 1984



417 S. San Pedro (C), and  
429-429½ S. San Pedro (S)(\*). Looking northeast.

Las Cruces Original Townsite  
(Mesquite) Historic District.

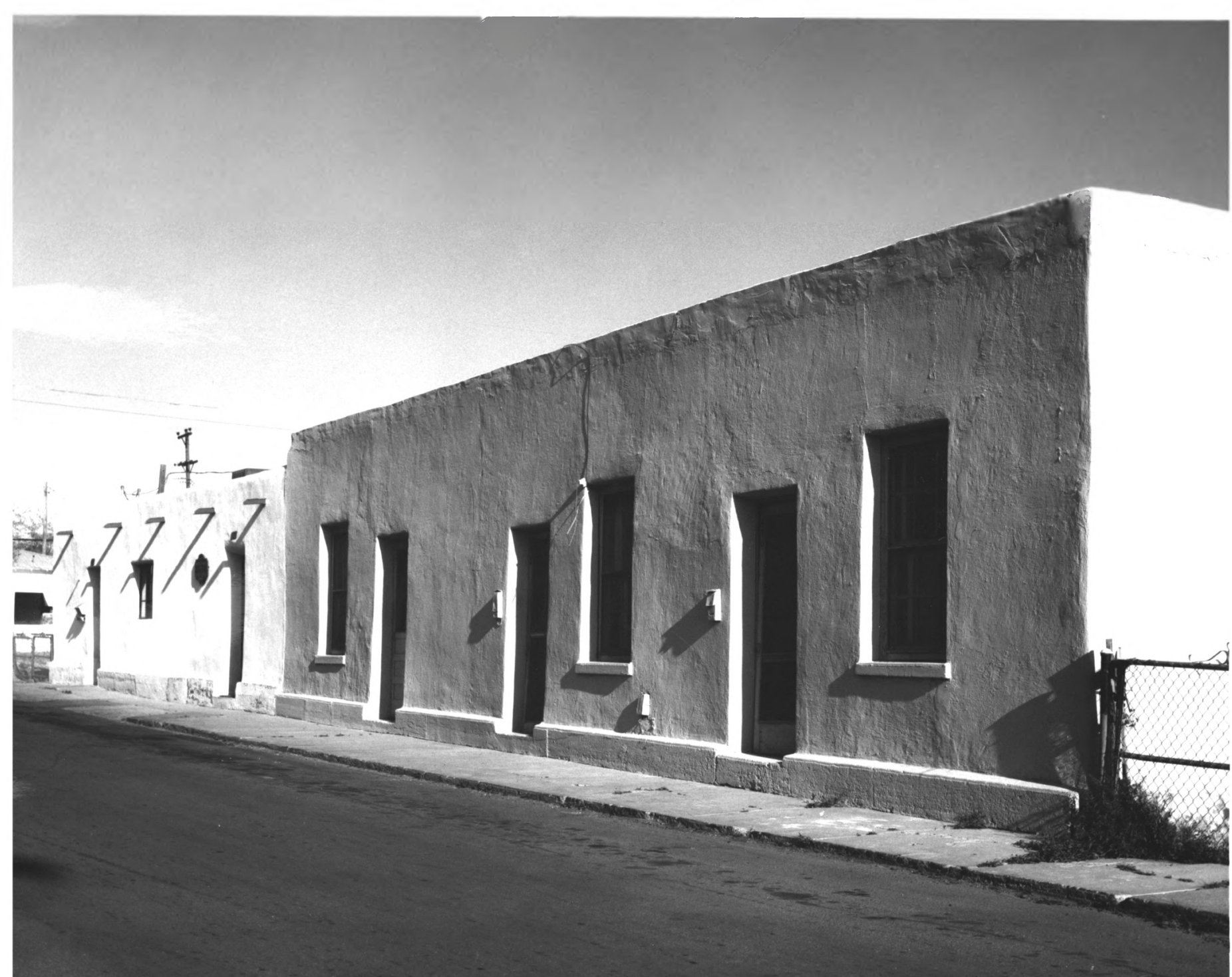
Las Cruces, Dona Ana County

Betsy Swanson

New Mexico Historic Preservation Division

April, 1984





410-412-414-420-422 E. May (S)(\*)

Looking southeast.

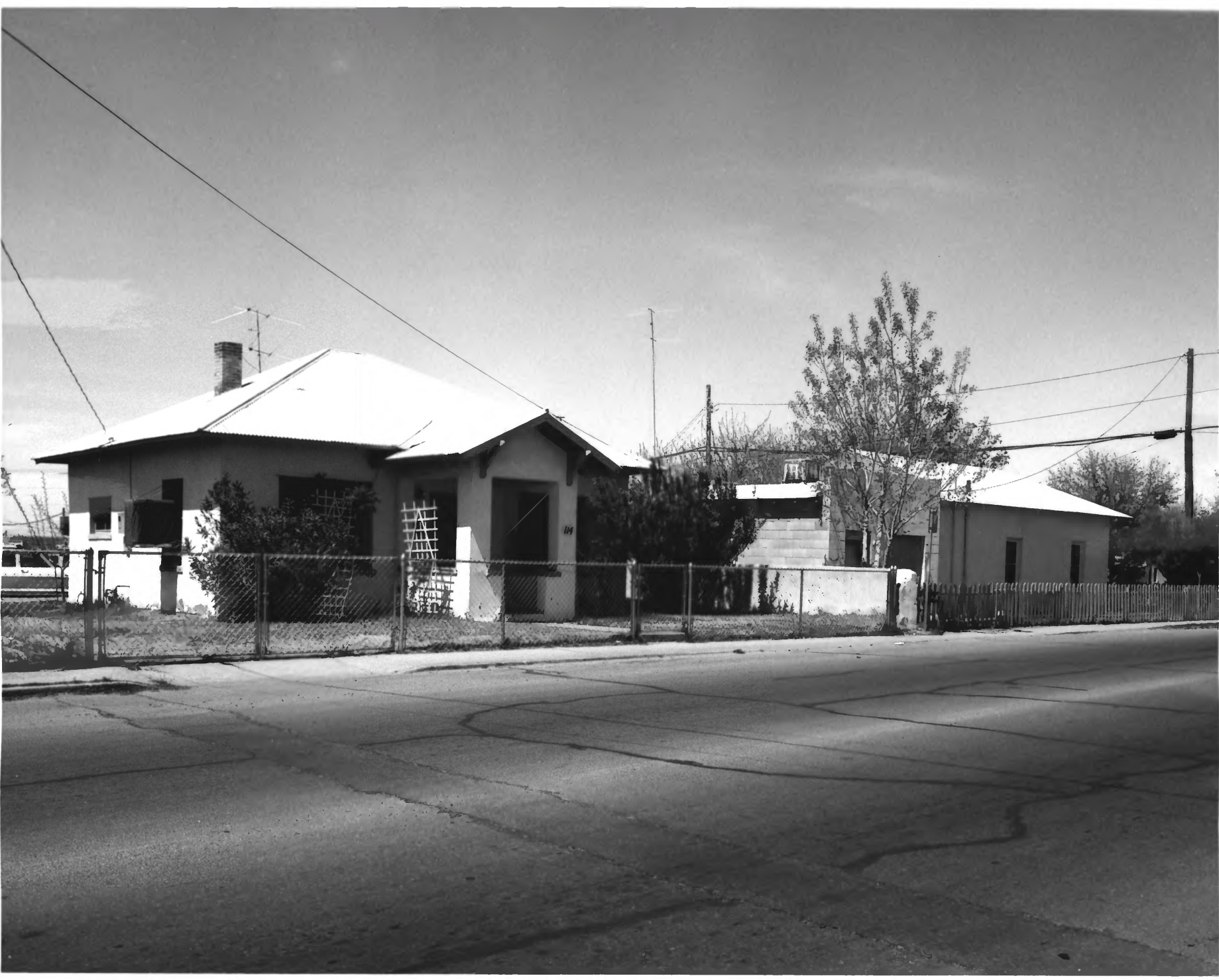
Las Cruces Original Townsite  
(Mesquite) Historic District.

Las Cruces, Dona Ana County

Betsy Swanson

New Mexico Historic Preservation Division

April, 1984



114 S. Mesquite (S) (\*), 444 E. Griggs (rear)  
(Sup), and concrete block building at rear of  
this property (NC). Looking northwest.

Las Cruces Original Townsite  
(Mesquite) Historic District.

Las Cruces, Dona Ana County

Betsy Swanson

New Mexico Historic Preservation Division

April, 1984







429 E. May (S)(\*). Looking northwest.

Las Cruces Original Townsite  
(Mesquite) Historic District.

Las Cruces, Dona Ana County

Betsy Swanson

New Mexico Historic Preservation Division

April, 1984



700-706 S. San Pedro (rear), (S),  
320 E. Soledad (S), 314-316 E. Soledad (S)(\*).  
Looking southeast.

Las Cruces Original Townsite  
(Mesquite) Historic District.  
Las Cruces, Dona Ana County

Betsy Swanson

New Mexico Historic Preservation Division  
April, 1984



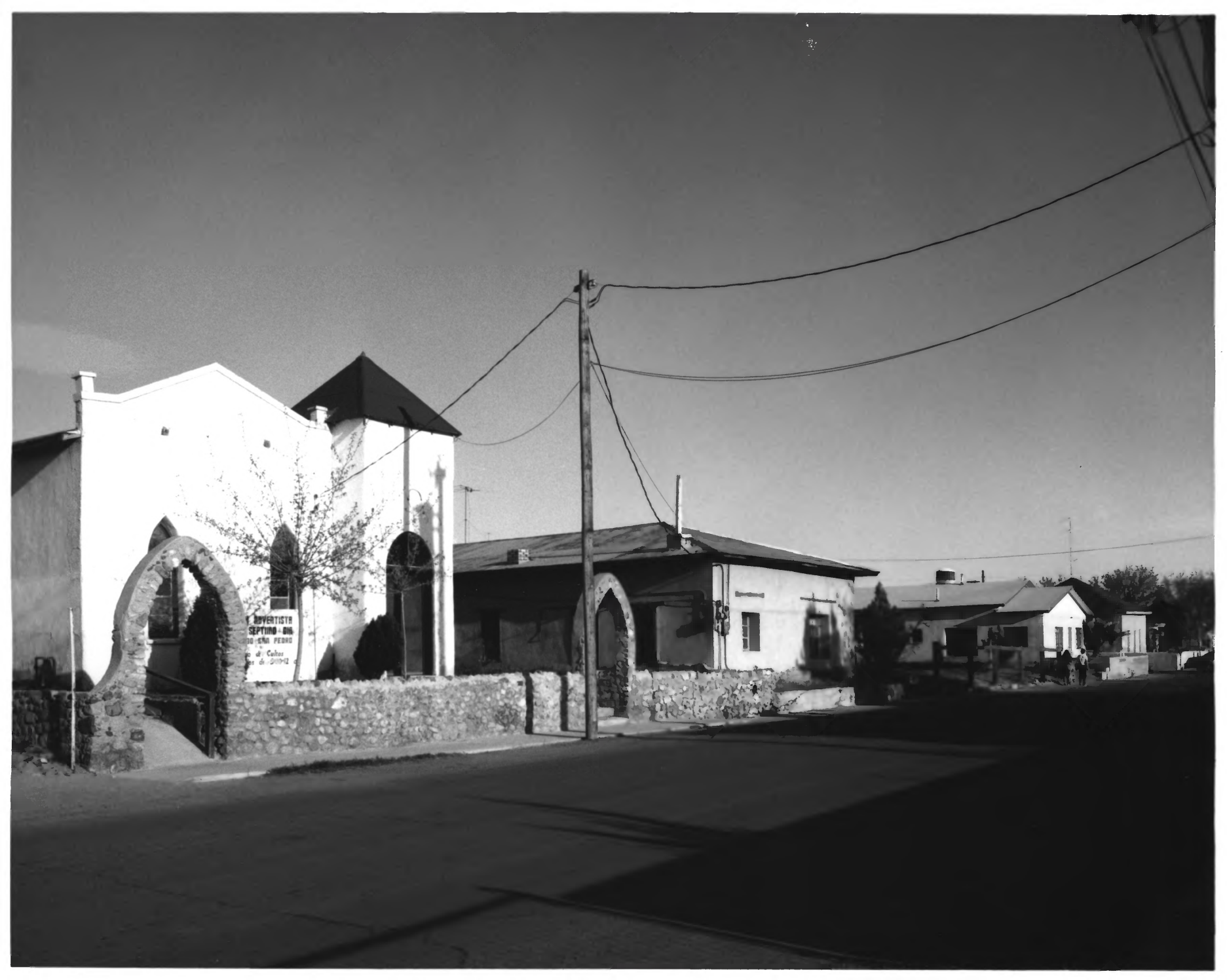
218-220-224-230-232 N. Campo (C),  
204 N. Campo and 309 E. Organ (S)(\*).  
Looking northeast.

Las Cruces Original Townsite  
(Mesquite) Historic District.  
Las Cruces, Dona Ana County

Betsy Swanson

New Mexico Historic Preservation Division  
April, 1984





A black and white photograph of a church building. The church features a prominent bell tower on the left side, topped with a dark, pointed roof. The main body of the church is white with several large, stone-arched openings. A low stone wall runs along the front of the building. In the foreground, a utility pole with several power lines stands on the left. The sky is clear and bright. In the background, other buildings and trees are visible, suggesting a small town or village setting.

ADVERTISTA  
SEPTIMO - DIA  
DE ENRI PEDRO  
de Calas  
de 2019

330 N. San Pedro (S)(\*),  
326 N. San Pedro (S)(\*),  
304 N. San Pedro (C), 226-226½ N. San Pedro  
(S)(\*). Looking southeast.

Las Cruces Original Townsite  
(Mesquite) Historic District.

Las Cruces, Dona Ana County

Betsy Swanson

New Mexico Historic Preservation Division

April, 1984



121 S. Mesquite (S)(\*)

and 127 S. Mesquite (S)(\*), looking northeast.

Las Cruces Original Townsite  
(Mesquite) Historic District.

Las Cruces, Dona Ana County

Betsy Swanson

New Mexico Historic Preservation Division

April, 1984







227 N. San Pedro (S)(\*). Looking west.

Las Cruces Original Townsite  
(Mesquite) Historic District.

Las Cruces, Dona Ana County

Betsy Swanson

New Mexico Historic Preservation Division

April, 1984



Klein Park, looking south, showing 444 E. Griggs  
(Sup), 442 E. Griggs (S) hidden behind trees,  
428 E. Griggs (Sup), 426 E. Griggs (S), and  
410 E. Griggs (S). Looking south.

Las Cruces Original Townsite  
(Mesquite) Historic District.

Las Cruces, Dona Ana County

Betsy Swanson

New Mexico Historic Preservation Division

April, 1984