



City Creek Canyon Historic District

Salt Lake City, Utah

MAR 12 1980

Salt Lake County
Canyon Road streetscape

looking west across parkway (sites 6, 5, 4)

Thomas W. Hanchett, photographer

June 1979

Negative filed at Utah State Historical Soc.

1/20

JAN 29 1980



City Creek Canyon Historic District

2/20

Salt Lake City, Utah

Sites 2, 1, 53

Salt Lake Co.
231 Canyon Road; Ottinger Hall, 233 Canyon Road
Memory Grove Gate

View of west side of Canyon Road

Photograph: Thomas W. Hanchett

October 1978

NOV 20 1978

MAR 12 1980

Negative filed at Utah State Historical
Society



Salt Lake County
City Creek Canyon Historic District 3/20

Salt Lake City, Utah

JAN 29 1980

Canyon Road streetscape

Looking south (sites 47, 46, 45) MAR 12 1980

Thomas W. Hanchett, photographer

June 1979

Negative filed at Utah State Historical Soc.



Salt Lake County

City Creek Canyon Historic District

4/20

Salt Lake City, Utah

JAN 29 1980

Canyon Road, looking south from Memory Grove
through the gates of the Grove toward
Ottinger Hall (site 1).

Thomas W. Hanchett, photographer

June 1979

Negative filed at Utah State Historical Soc.

MAR 12 1980



Salt Lake County

City Creek Canyon Historic District

5/20

Salt Lake City, Utah

JAN 29 1980

Canyon Road streetscape

looking north (sites 37, 36, 35)

Thomas W. Hanchett, photographer

June 1979

Negative filed at Utah State Historical Soc.

MAR 12 1980



SPICER 8175



Salt Lake County

City Creek Canyon Historic District . 6/20
Salt Lake City, Utah

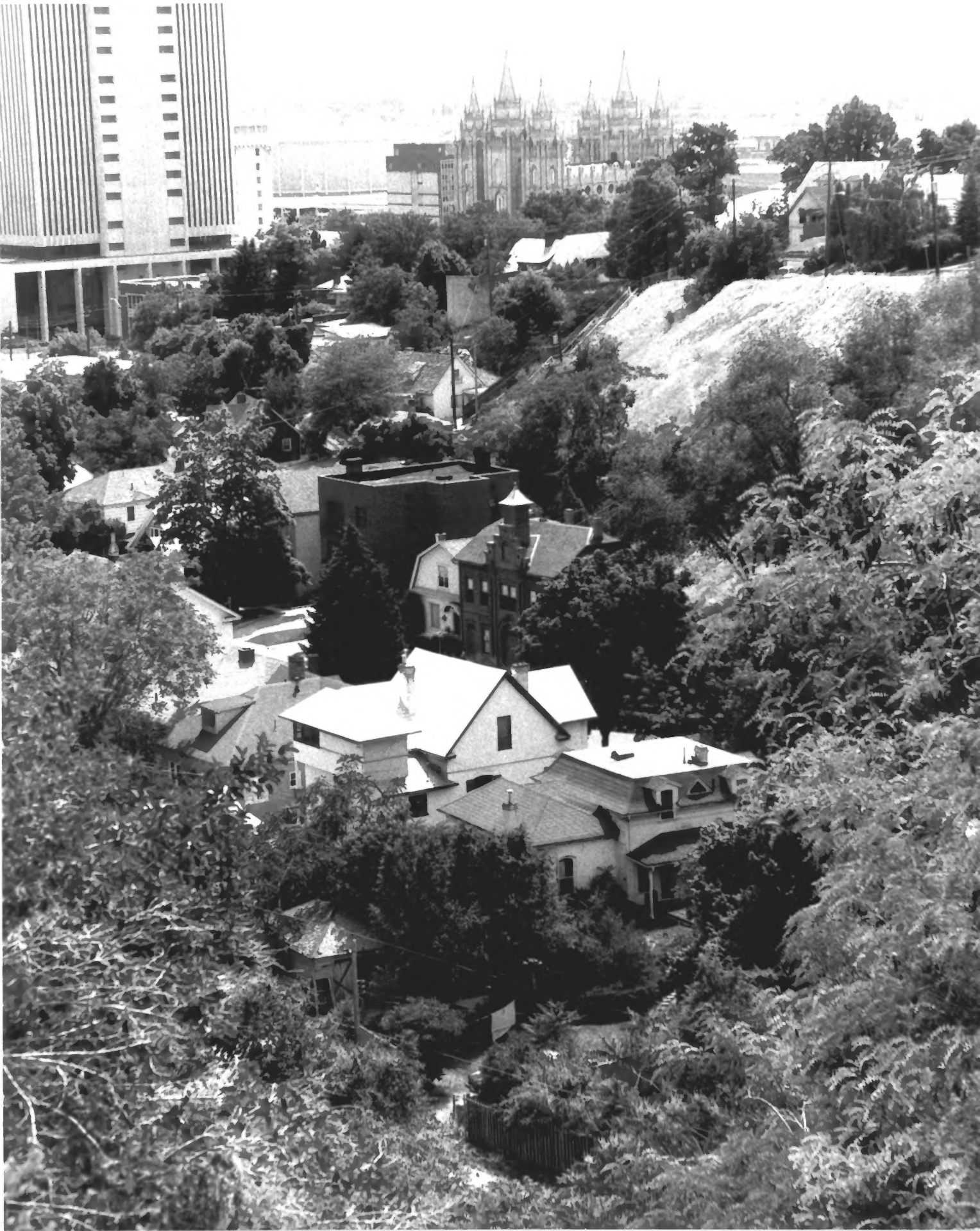
JAN 29 1980

Canyon Road streetscape
looking east from site 42 (sites 40, 39, 38,
37)

MAR 12 1980

Thomas W. Hanchett, photographer
June 1979

Negative filed at Utah State Historical Soc.



~~Salt~~ Lake County

City Creek Canyon Historic District

7/20

Salt Lake City, Utah

Looking down on the historic district (sites
42-46, 1-7) from the east side of the canyon.

Downtown Salt Lake and the LDS (Mormon)
Temple visible beyond.

MAR 12 1980
JAN 29 1980

Thomas W. Hanchett, photographer
June 1979

Negative filed at Utah State Historical Soc.

4



Salt Lake County
City Creek Canyon Historic District 8/20
Salt Lake City, Utah

JAN 29 1980

Memory Grove (site 53)

War Memorial, looking west

Stairs to the State Capitol visible at left

Phillip W. Neuberg, photographer

Spring 1979

Negative filed at Utah State Historical Soc.

MAR 12 1980



Salt Lake County
City Creek Canyon Historic District

9/20

Salt Lake City, Utah

City Creek Canyon looking north from A Street
and 9th Avenue. Trees of Memory Grove at
lower left.

MAR 12 1980

Thomas W. Hanchett, photographer
June 1979

Negative filed at Utah State Historical Soc.

JAN 29 1980



OTTUMWA
HALL
1888

VEIKAWOLLA
FREEMASONS

City Creek Canyon Historic District 10/20
Salt Lake City, Utah
Site 1

Salt Lake Co.

Ottinger Hall, 233 Canyon Road
North and east (front) facades

NOV 20 1978

Photograph: Thomas W. Hanchett
October 1978

Negative filed at Utah State Historical
Society

MAR 12 1980



City Creek Canyon Historic District

11/20

Salt Lake City, Utah

Site 4

Snow House

217 Canyon Road

East (front) facade

Photographer: Thomas W. Hanchett

October 1978

Negative filed at Utah State Historical

Society

MAR 12 1979

Salt Lake Co.

JAN 29 1980



City Creek Canyon Historic District

12/20

Salt Lake City, Utah

Site 5

Salt Lake Co.

MAR 12 1980

Elliot Kimball House, 211 Canyon Road
South and east (front) facades

Photograph: Thomas W. Hanchett

October 1978

NOV 20 1978

Negative filed at Utah State Historical
Society



City Creek Canyon Historic District 13/20
Salt Lake City, Utah
Site 6

MAR 12 1980

Hermann Anderson House, 207 Canyon Road
Detail of the east (front) facade

Photograph: Thomas W. Hanchett
October 1978

NOV 20 1978

Negative filed at Utah State Historical
Society

Salt Lake Co.



City Creek Canyon Historic District

14/20

Salt Lake City, Utah

Site 6

MAR 12 1980

Anderson House

207 Canyon Road

East (front) facade

Photographer: Thomas W. Hanchett

October 1978

Negative filed at Utah State Historical

Society

Salt Lake County JAN 29 1980



NO PARKING
10:00 PM

City Creek Canyon Historic District 15/20

Salt Lake City, Utah

Site 15

Blair-Alt House

MAR 12 1980

183 Canyon Road

East (front) facade

Photographer: Thomas W. Hanchett

October 1978

Negative filed at Utah State Historical
Society

JAN 29 1980

Salt Lake County



City Creek Canyon Historic District 16/20

Salt Lake City, Utah
Site 25

Pratt-Whitney House
160 Fourth Avenues

MAR 12 1980

South (front) facade

Photographer: Thomas W. Hanchett

October 1978

Negative filed at Utah State Historical
Society

Salt Lake Co.

JAN 29 1980



City Creek Canyon Historic District 17/20
Salt Lake City, Utah
Site 37

MAR 12 1980

Joshua Paul House, 220 Canyon Road
North and west (front) facades

Photograph: Thomas W. Hanchett
October 1978

NOV 20 1978

Negative filed at Utah State Historical
Society

Salt Lake Co.



City Creek Canyon Historic District 18/20
Salt Lake City, Utah
Site 46

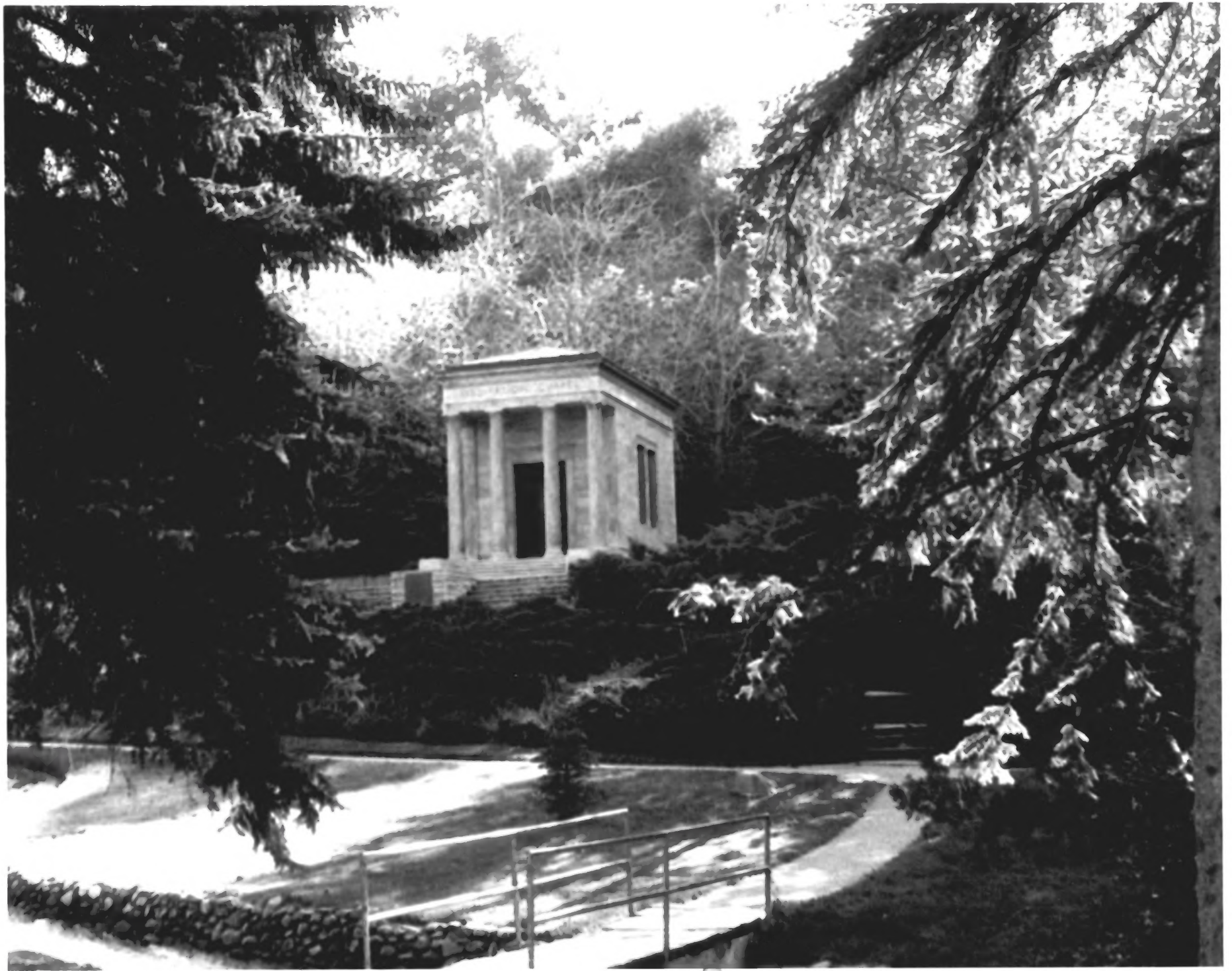
MAR 12 1980

Helaman Pratt/Franklin Richards Snow House
252 Canyon Road
West (front) and south facades

Photograph: Thomas W. Hanchett NOV 20 1978
October 1978

Negative filed at Utah State Historical
Society

Salt Lake Co.



City Creek Canyon Historic District

19/20

Salt Lake City, Utah

Site 53

MAR 12 1980

Memory Grove, Meditation Chapel

West (front) facade

Photographer: Thomas W. Hancehtt

October 1978

Negative filed at Utah State Historical

Society

Salt Lake Co, JAN 29 1980



City Creek Canyon Historic District 20/20
Salt Lake City, Utah
Site 53

MAR 12 1980

Memorial House, 485 Canyon Road
Memory Grove Park
East facade

Salt Lake Co.
NOV 20 1978

Photograph: Thomas W. Hanchett
October 1978

Negative filed at Utah State Historical
Society