



Wheeler-Beecher House

Bethany, CT

NEW Haven County

FEB 7 1977

B. Clouette Photo, 5/76

Negative with Connecticut Historical Commission
Hartford, CT

North facade, view south

JUL 15 1977

2 of 6

PROPERTY OF THE NATIONAL REGISTER



Wheeler-Beecher House

Bethany, CT

New Haven County

FEB 7 1977

B. Clouette Photo, 5/76

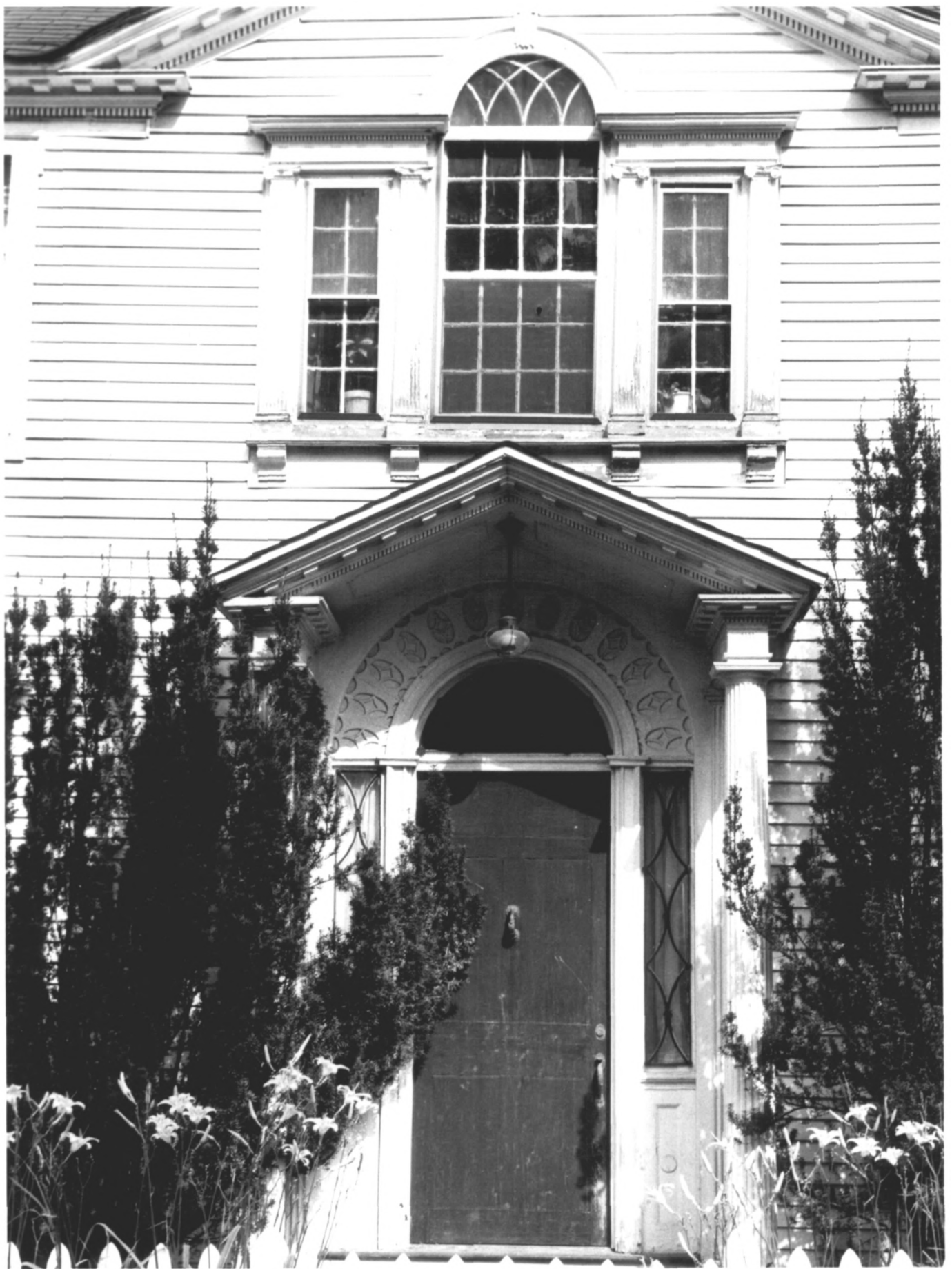
Negative with Connecticut Historical Commission
Hartford, CT

Main facade, view southeast

JUL 15 1971

1

PROPERTY OF THE NATIONAL REGISTER



Wheeler-Beecher House

FEB 7 1977

Bethany, CT

B. Clouette Photo, 7/75

New Haven County

Negative with Connecticut Historical Commission

Hartford, CT

JUL 15 1977

Detail of doorway and Palladian window, view east

3 of 6

PROPERTY OF THE NATIONAL REGISTER



Wheeler-Beecher House

Bethany, CT

New Haven County

FEB 7 1977

B. Clouette Photo, 8/76

Negative with Connecticut Historical Commission
Hartford, CT

Interior, north front room, view east

JUL 15 1977

5066

PROPERTY OF THE NATIONAL REGISTER



Wheeler-Beecher House

Bethany, CT

New Haven County

B. Clouette Photo, 8/76

Negative with Connecticut Historical Commission
Hartford, CT

Interior, hallway, view east

JUL 15 1977

FEB 7 1977

4 of 6

PROPERTY OF THE NATIONAL REGISTER



Wheeler-Beecher House

Bethany, CT

New Haven County

B. Clouette Photo, 8/76.

Negative with Connecticut Historical Commission
Hartford, CT

Interior, ballroom, view southeast

FEB 7 1977 6 of 6

JUL 15 1977

PROPERTY OF THE NATIONAL REGISTER