



Roe-Parker House      1 of 21  
416 State Street  
Hood River, Hood River County, Oregon

Historic Photo: 1909  
South elevation  
Photo courtesy of  
Bonnie Edstrom and  
Mary Harrington



Roe-Parker House

2 of 21

416 State Street

Hood River, Hood River County, Oregon

Historic Photo: 1909  
West elevation

Photo courtesy of  
Bonnie Edstrom and  
Mary Harrington



Roe-Parker House                      3 of 21  
416 State Street  
Hood River, Hood River County, Oregon

Historic Photo:     1919  
West elevation

Photo courtesy of  
Bonnie Edstrom and  
Mary Harrington



Roe-Parker House                    4 of 21  
416 State Street  
Hood River, Hood River County, Oregon

Negative of 1987 Photo by  
Historic Dimensions  
1002 SE 26th Avenue  
Portland OR 97214

#18            Roll II

Site:  
Looking north:  
Hood River County Library  
and Collinson House





Roe-Parker House                    5 of 21  
416 State Street  
Hood River, Hood River County, Oregon

Negative of 1987 Photo by  
Historic Dimensions  
1002 SE 26th Avenue  
Portland OR 97214

#13    Roll III  
Exterior:  
South Elevation



Roe-Parker House

6 of 21

416 State Street

Hood River, Hood River County, Oregon

Negative of 1987 Photo by

Historic Dimensions

1002 SE 26th Avenue

Portland OR 97214

#19 Roll III

Exterior

West Elevation



Roe-Parker House                      7 of 21  
416 State Street  
Hood River, Hood River County, Oregon

Negative of 1987 Photo by  
Historic Dimensions  
1002 SE 26th Avenue  
Portland OR 97214

#8              Roll II

Exterior:  
West elevation



Roe-Parker House

8 of 21

416 State Street

Hood River, Hood River County, Oregon

Negative of 1987 Photo by

Historic Dimensions

1002 SE 26th Avenue

Portland OR 97214

#11      Roll 11

Exterior

Rear Garage Addition

West Elevation





Roe-Parker House

9 of 21

416 State Street

Hood River, Hood River County, Oregon

Negative of 1987 Photo by

Historic Dimensions

1002 SE 26th Avenue

Portland OR 97214

#15

Roll II

Exterior/Rear porch:

Foundation



Roe-Parker House                      10 of 21  
416 State Street  
Hood River, Hood River County, Oregon

Negative of 1987 Photo by  
Historic Dimensions  
1002 SE 26th Avenue  
Portland OR 97214

#23                      Roll I

Exterior:  
East elevation



Roe-Parker House

11 of 21

416 State Street

Hood River, Hood River County, Oregon

Negative of 1987 Photo by

Historic Dimensions

1002 SE 26th Avenue

Portland OR 97214

#3      Roll I

Exterior:

East elevation



Roe-Parker House

12 of 21

416 State Street

Hood River, Hood River County, Oregon

Negative of 1987 Photo by

Historic Dimensions

1002 SE 26th Avenue

Portland OR 97214

# *CS* Roll III

Exterior:

East elevation;

foundation detail





Roe-Parker House

13 of 21

416 State Street

Hood River, Hood River County, Oregon

Negative of 1987 Photo by  
Historic Dimensions  
1002 SE 26th Avenue  
Portland OR 97214

#15 Roll III

Exterior:

South Gable End



416

Roe-Parker House            14 of 21  
416 State Street  
Hood River, Hood River County, Oregon

Negative of 1987 Photo by  
Historic Dimensions  
1002 SE 26th Avenue  
Portland OR 97214

# 16        Roll III

Exterior:  
Front porch post and  
frieze detail

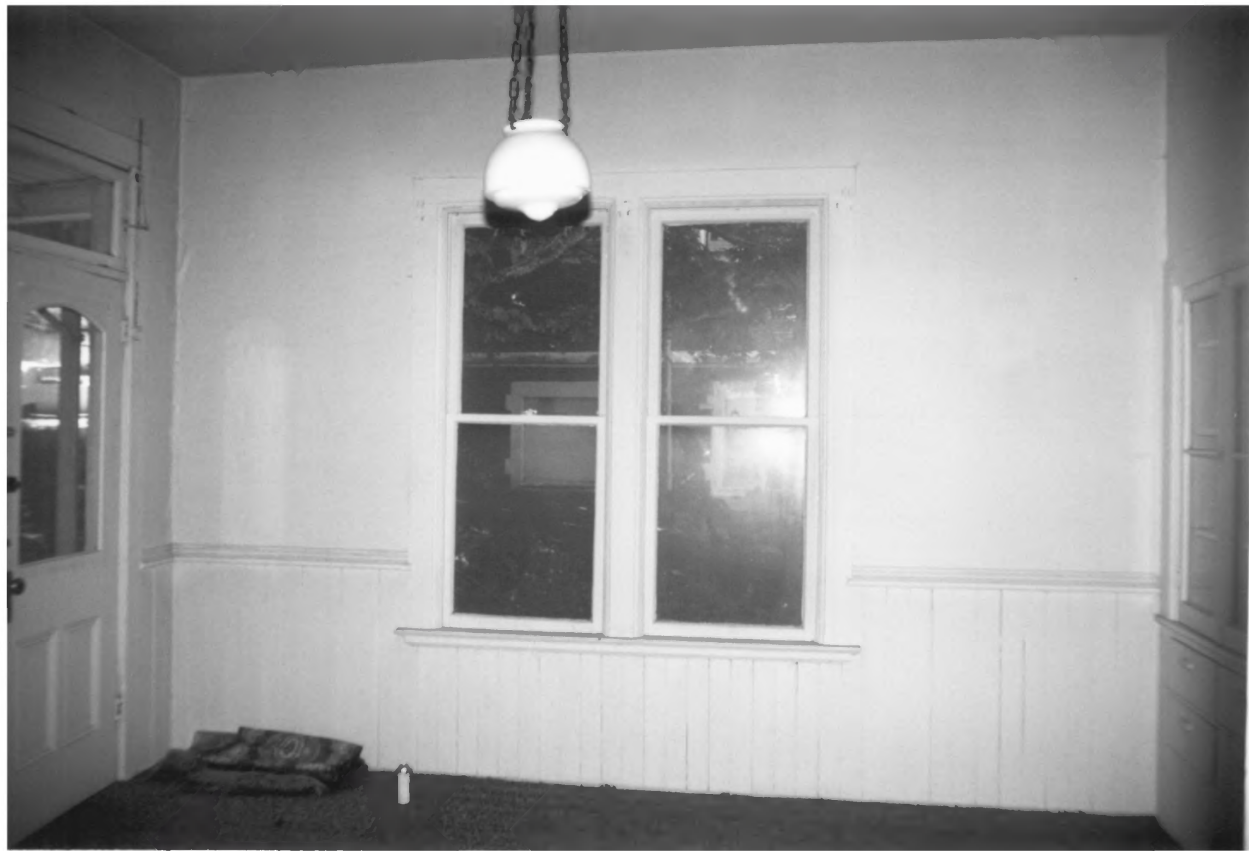


Roe-Parker House                      15 of 21  
416 State Street  
Hood River, Hood River County, Oregon

Negative of 1987 Photo by  
Historic Dimensions  
1002 SE 26th Avenue  
Portland OR 97214

# 17      Roll III

Exterior:  
Front porch door and  
transom



Roe-Parker House                      16 of 21  
416 State Street  
Hood River, Hood River County, Oregon

Negative of 1987 Photo by  
Historic Dimensions  
1002 SE 26th Avenue  
Portland OR 97214

#2              Roll I

Interior:  
Wainscoting in dining  
room; looking west





Roe-Parker House            17 of 21  
416 State Street  
Hood River, Hood River County, Oregon

Negative of 1987 Photo by  
Historic Dimensions  
1002 SE 26th Avenue  
Portland OR 97214

#3            Roll I

Interior:  
Looking south to living  
room bay window



Roe-Parker House

18 of 21

416 State Street

Hood River, Hood River County, Oregon

Negative of 1987 Photo by

Historic Dimensions

1002 SE 26th Avenue

Portland OR 97214

#1 Roll I

Interior:

Dining room looking north.



Roe-Parker House 19 of 21

416 State Street

Hood River, Hood River County, Oregon

Negative of 1987 Photo by

Historic Dimensions

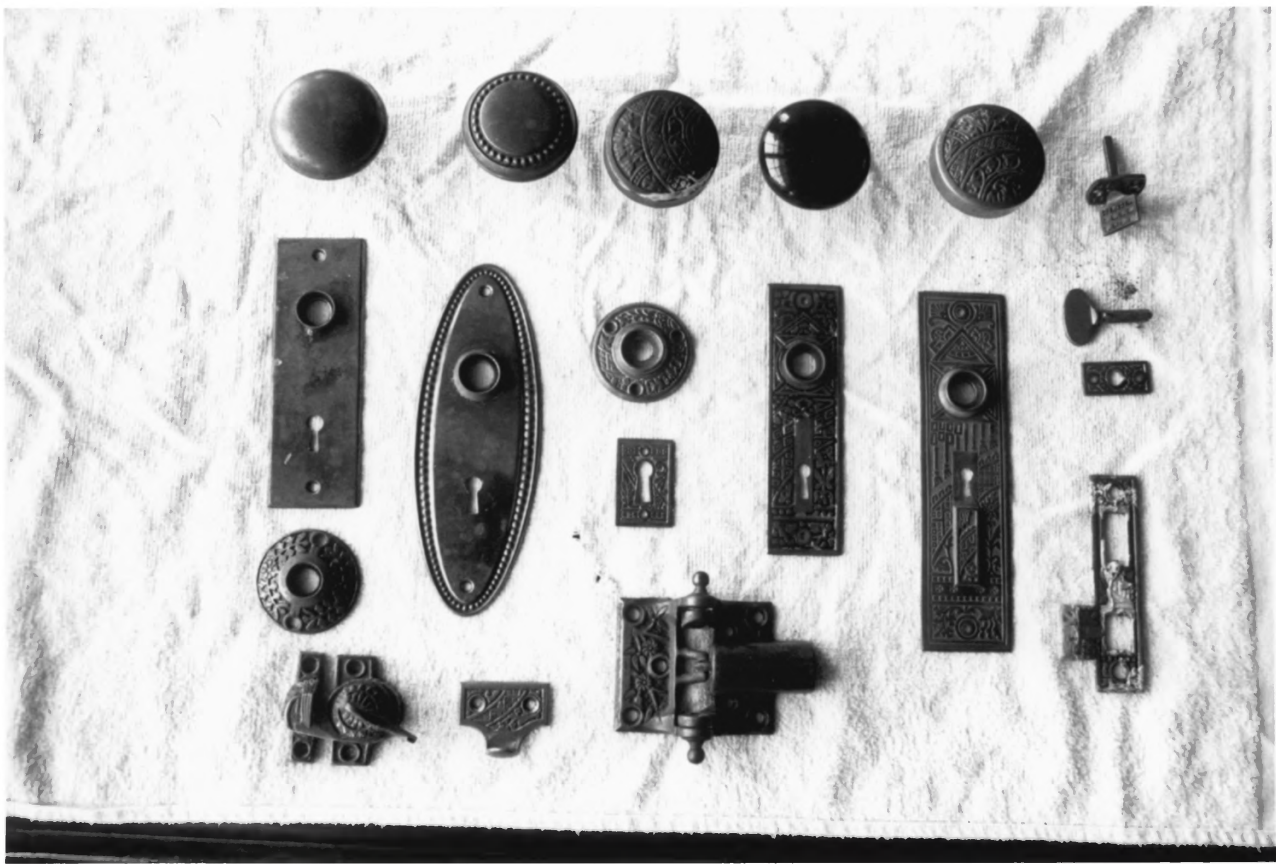
1002 SE 26th Avenue

Portland OR 97214

#14 Roll I

Interior:

Kitchen cupboards and  
dumbwaiter; looking south



Roe-Parker House            20 of 21  
416 State Street  
Hood River, Hood River County, Oregon

#2    Roll IV  
Hardware

Negative of 1987 Photo by  
Historic Dimensions  
1002 SE 26th Avenue  
Portland OR 97214





Roe-Parker House

21 of 21

416 State Street

Hood River, Hood River County, Oregon

#20          Roll I

Interior/Basement:

Coal chute in west  
foundation wall