



Lock and Dam No. 2 Hennepin and Ramsey Counties, Minnesota MHS 6972A

Lock and Dam No. 2

Hennepin and Ramsey Counties, Minnesota

photographer unknown

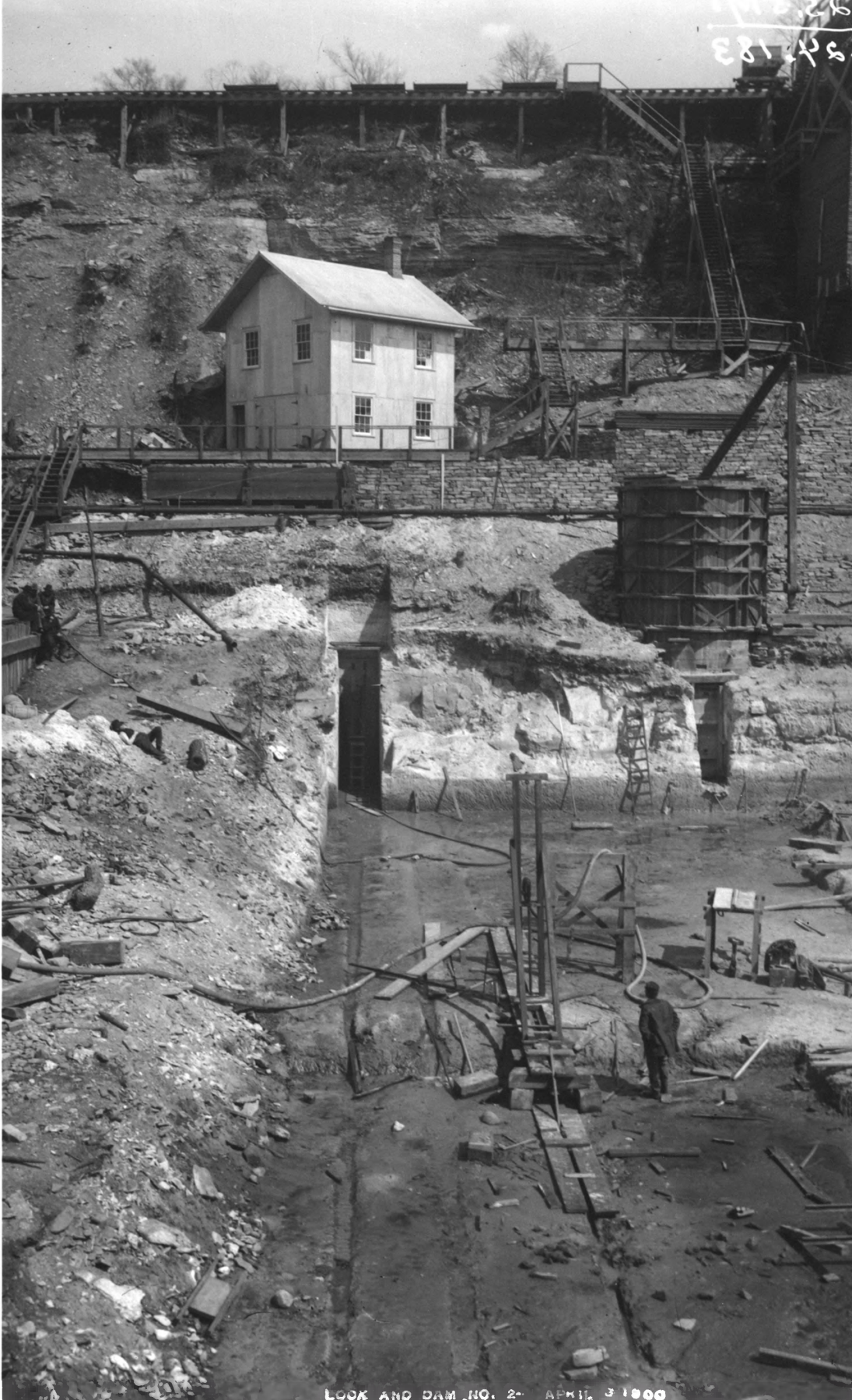
1898

Minnesota Historical Society

looking NW at east side bluff top

6972 A

Constructing U.S. Lock & Dam #2 in Minneapolis. 1898.
MHS Locator #MH5.9/MP4.2/r41. Negative #6972-A.



183
183

Lock and Dam No. 2
Hennepin and Ramsey Counties, Minnesota
MHS 6974A

Lock and Dam No. 2

Hennepin and Ramsey Counties, Minnesota

photographer unknown

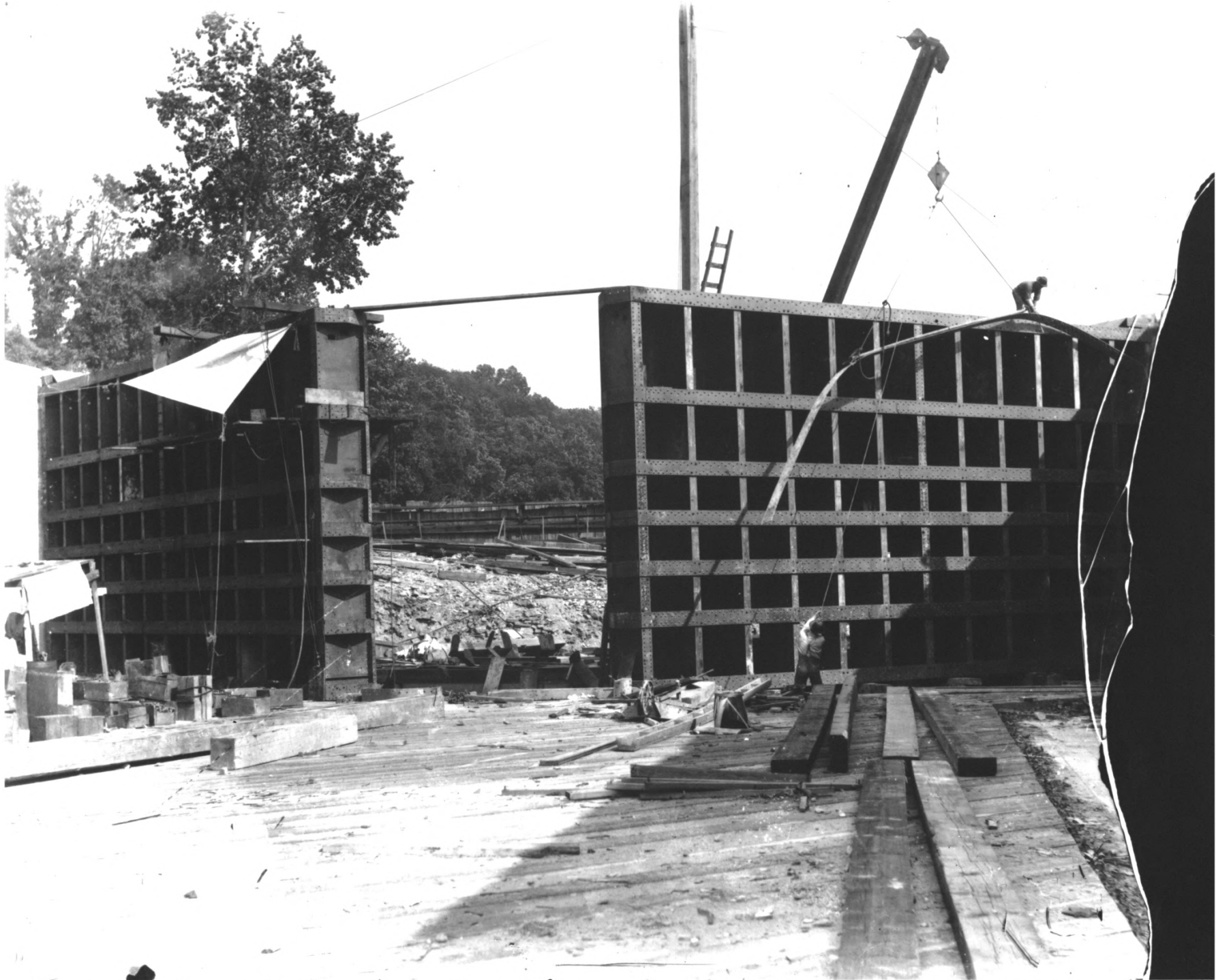
April 1900

Minnesota Historical Society

looking NE at lock sump well

6974A

U.S. Lock & Dam #2 in Minneapolis, Minnesota. 1900.
MHS Locator #MH5.9/MP4.2/r46. Negative #6974-A.



Lock and Dam No. 2 Hennepin and Ramsey Counties, Minnesota

MHS 93130

Lock and Dam No. 2

Hennepin and Ramsey Counties, Minnesota

photographer unknown

ca 1900 - 1905

Minnesota Historical Society

looking SE at lock gates

93130

Construction of U.S. Lock & Dam #2 in Minneapolis, ca. 1900-1905.
MHS Locator #HD6.4/p17. Negative #93130.



Lock and Dam No. 2 Hennepin and Ramsey Counties, Minnesota MHS 6994A

Lock and Dam No 2

Hennepin and Ramsey Counties, Minnesota

photographer unknown

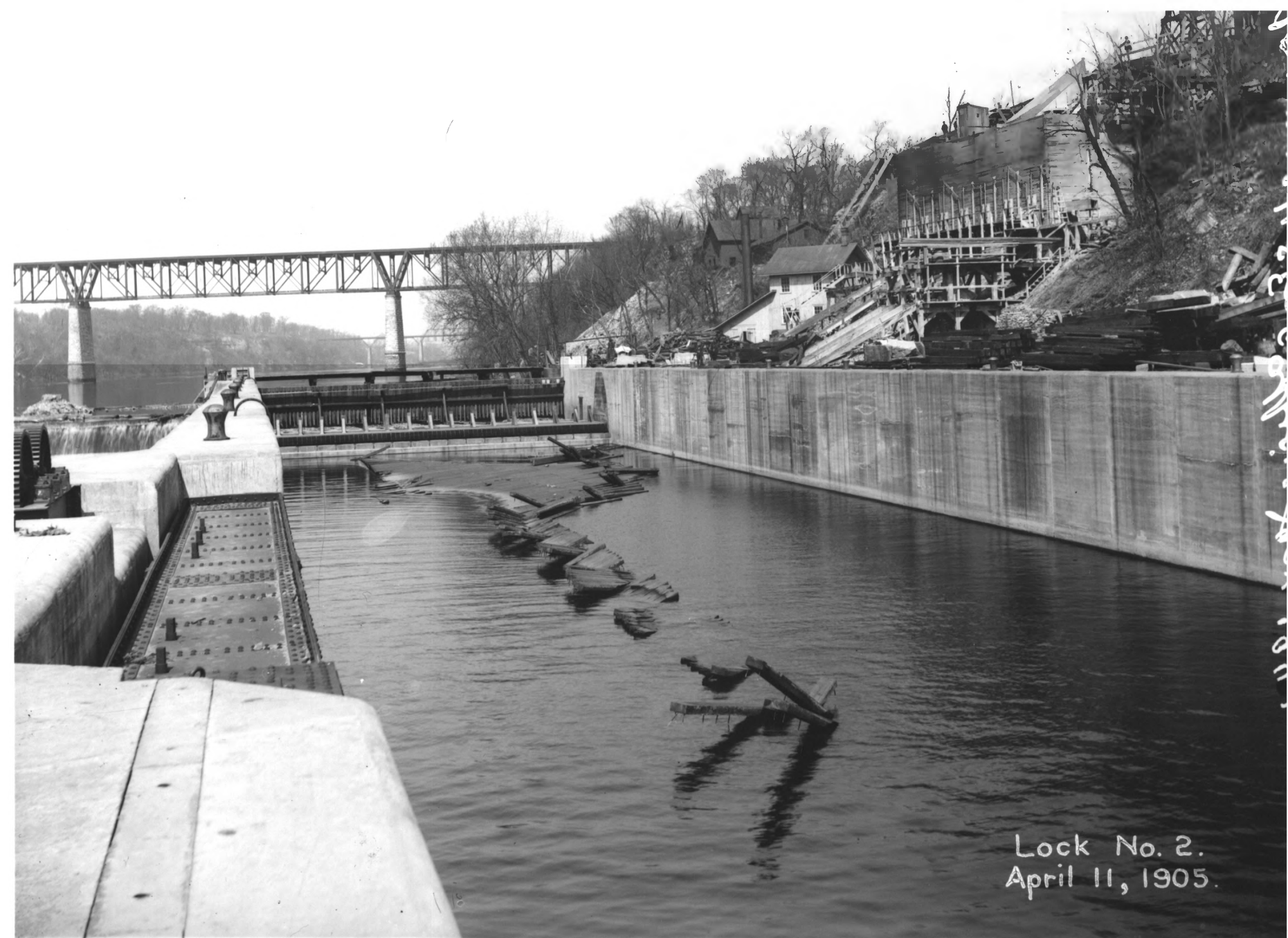
ca. 1905

Minnesota Historical Society

looking SE at lock

6994-A

Constructing U.S. Lock & Dam #2 in Minneapolis. 1901-1903.
MHS Locator #MH5.9/MP4.2/r51. Negative #6994-A.



Lock No. 2.
April 11, 1905.

Lock and Dam No. 2 Hennepin and Ramsey Counties, Minnesota

MHS 6990A

Lock and Dam No. 2
Hennepin and Ramsey Counties, Minnesota
photographer unknown
April, 1905
Minnesota Historical Society
Looking NW through lock
6990-A

Constructing U.S. Lock & Dam #2 in Minneapolis. April 11, 1905.
MHS Locator #MH5.9/MP4.2/r58. Negative #6990-A.

The future head of navigation on the Mississippi at Minneapolis.
You're invited! Minneapolis 1911 Civic Celebration, July 2 to 8.
Seven Great Days of Pageants and Spectacles



Lock and Dam No. 2
Hennepin and Ramsey Counties, Minnesota
MHS 92899

Lock and Dam No. 2

Hennepin and Ramsey Counties, Minnesota

photographer unknown

1911

Minnesota Historical Society

looking north

92899

View of the Mississippi River at Minneapolis, 1911.
MHS Locator #MH5.9/ MP4.2/r100. Negative #92899.



Lock and Dam No. 2
Hennepin and Ramsey Counties, Minnesota
MHS 014227-1

Lock and Dam No. 2

Hennepin and Ramsey counties, Minnesota

Jack Maloney

July, 2001

Minnesota Historical Society
looking SE at Lock Master's house foundation
014227-1



Lock and Dam No. 2
Hennepin and Ramsey Counties, Minnesota
MHS 014227-7

Lock and Dam No. 2.

Hennepin and Ramsey counties, Minnesota

Jack Maloney

July, 2001

Minnesota Historical Society

looking west at lock

014227-7



Lock and Dam No. 2
Hennepin and Ramsey boulevards,
Minnesota

MHS 014227-12

Lock and Dam No. 2

Hennepin and Ramsey Counties, Minnesota

Jack Maloney

July, 2001

Minnesota Historical Society

looking SE along inner lock wall

©14227-12



Lock and Dam No. 2
Hennepin and Ramsey Counties, Minnesota
MHS 014227-13

Lock and Dam No. 2

Hennepin and Ramsey Counties, Minnesota

Jack Maloney

July, 2001

Minnesota Historical Society

looking west across lock chamber

©14 227-13