



UNITED STATES DEPARTMENT OF THE INTERIOR
NATIONAL PARK SERVICE

NATIONAL REGISTER OF HISTORIC PLACES
PROPERTY PHOTOGRAPH FORM

(Type all entries - attach to or enclose with photograph)

STATE Connecticut	
COUNTY New London	
FOR NPS USE ONLY	
ENTRY NUMBER 70-10-09-0026	DATE 10/15/70

SEE INSTRUCTIONS

1. NAME			
COMMON: U.S. Customs House			
AND/OR HISTORIC:			
2. LOCATION			
STREET AND NUMBER: 150 Bank Street			
CITY OR TOWN: New London			
STATE: Connecticut	CODE 06	COUNTY: New London	CODE 011
3. PHOTO REFERENCE			
PHOTO CREDIT: Constance Luyster			
DATE OF PHOTO: July 1970			
NEGATIVE FILED AT: Connecticut Historical Commission, 75 Elm Street, Hartford, Connecticut			
4. IDENTIFICATION			
DESCRIBE VIEW, DIRECTION, ETC. View from south to north: the southwest side and part of the back of the building.			





SEE INSTRUCTIONS

NATIONAL PARK SERVICE

NATIONAL REGISTER OF HISTORIC PLACES
PROPERTY PHOTOGRAPH FORM

(Type all entries - attach to or enclose with photograph)

Connecticut

COUNTY

New London

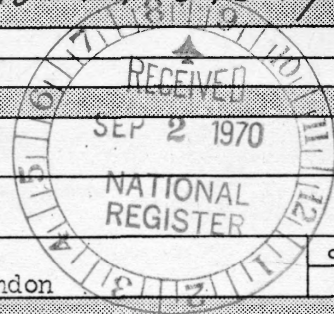
FOR NPS USE ONLY

ENTRY NUMBER

DATE

70 10.09.0026 10/15/70

1. NAME			
COMMON: U.S. Customs House			
AND/OR HISTORIC:			
2. LOCATION			
STREET AND NUMBER:			
150 Bank Street			
CITY OR TOWN:			
New London			
STATE:	CODE	COUNTY:	CODE
Connecticut	06	New London	011
3. PHOTO REFERENCE			
PHOTO CREDIT: Constance Luyster			
DATE OF PHOTO: July 1970			
NEGATIVE FILED AT:			
Connecticut Historical Commission, 75 Elm Street, Hartford, Connecticut			
4. IDENTIFICATION			
DESCRIBE VIEW, DIRECTION, ETC.			
View from southeast to northwest: the back of the building.			





NATIONAL PARK SERVICE

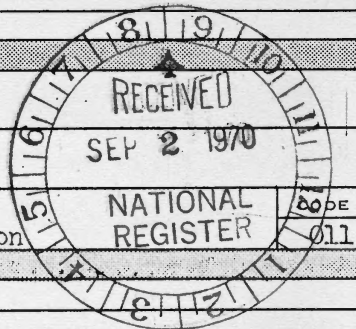
NATIONAL REGISTER OF HISTORIC PLACES
PROPERTY PHOTOGRAPH FORM

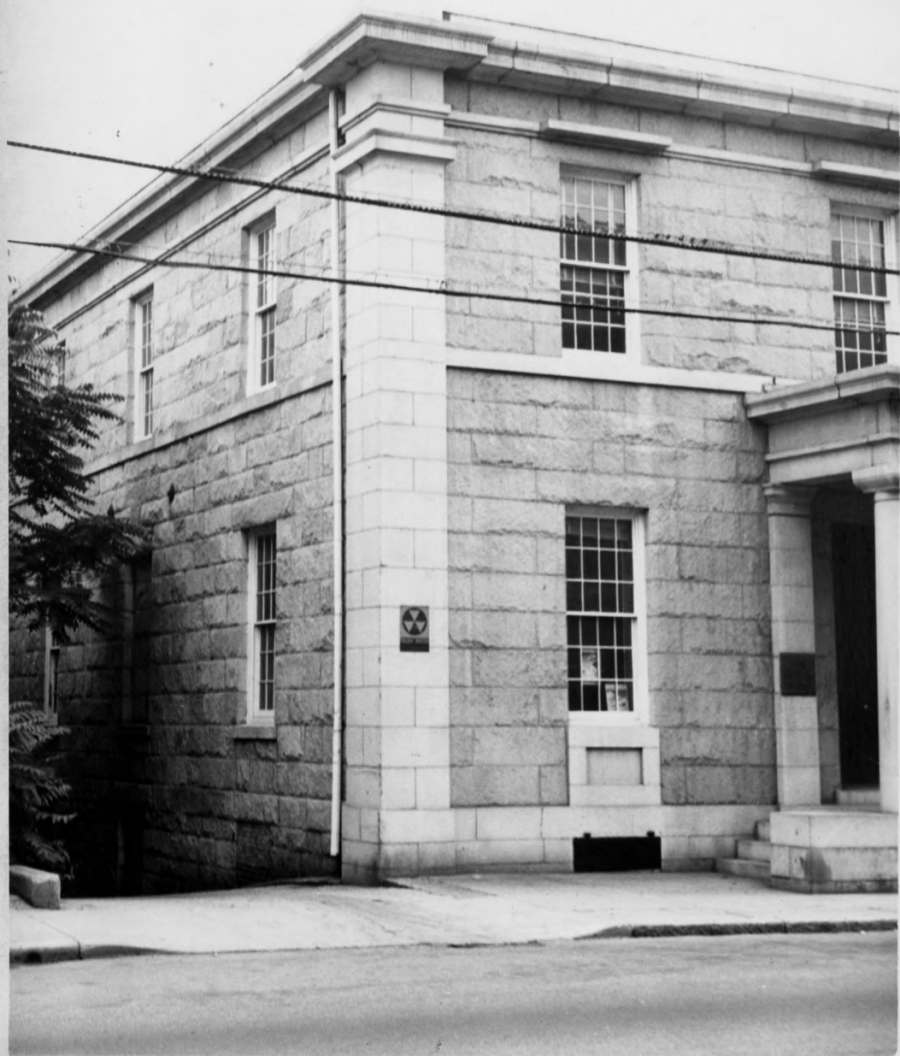
(Type all entries - attach to or enclose with photograph)

Connecticut	
COUNTY	
New London	
FOR NPS USE ONLY	
ENTRY NUMBER	DATE
70.10.09.0026	10/15/70

SEE INSTRUCTIONS

1. NAME		
COMMON: U.S. Customs House		
AND/OR HISTORIC:		
2. LOCATION		
STREET AND NUMBER:		
150 Bank Street		
CITY OR TOWN:		
New London		
STATE:	CODE	COUNTY:
Connecticut	06	New London
3. PHOTO REFERENCE		
PHOTO CREDIT: Constance Lyster		
DATE OF PHOTO: July 1970		
NEGATIVE FILED AT:		
Connecticut Historical Commission, 75 Elm Street, Hartford, Connecticut		
4. IDENTIFICATION		
DESCRIBE VIEW, DIRECTION, ETC.		
View from north to south: the facade and the northeast side.		





SEE INSTRUCTIONS

UNITED STATES DEPARTMENT OF THE INTERIOR
NATIONAL PARK SERVICE

**NATIONAL REGISTER OF HISTORIC PLACES
PROPERTY PHOTOGRAPH FORM**

(Type all entries - attach to or enclose with photograph)

Connecticut

COUNTY

New London

FOR NPS USE ONLY

ENTRY NUMBER

DATE

70-10-09-0026

10/15/70

1. NAME

COMMON: U.S. Customs House

AND/OR HISTORIC:

2. LOCATION

STREET AND NUMBER:

150 Bank Street

CITY OR TOWN:

New London

STATE:

Connecticut

CODE

COUNTY:

06

New London

CODE

011

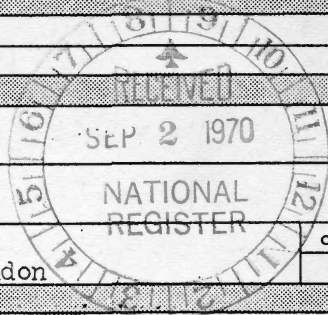
**3. PHOTO REFERENCE**

PHOTO CREDIT: Constance Luyster

DATE OF PHOTO: July 1970

NEGATIVE FILED AT:

Connecticut Historical Commission, 75 Elm Street, Hartford, Connecticut

4. IDENTIFICATION

DESCRIBE VIEW, DIRECTION, ETC.

View from north to south: part of the facade and the northeast side.