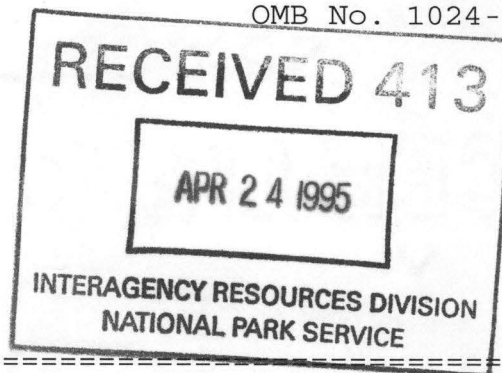


643

United States Department of the Interior
National Park Service



NATIONAL REGISTER OF HISTORIC PLACES
REGISTRATION FORM

=====

1. Name of Property

=====

historic name: Fourche LaFave River Bridge

other name/site number: PE0064

=====

2. Location

=====

street & number: State Highway 7 at crossing of Fourche LaFave River

not for publication: N/A

city/town: Nimrod

vicinity: X

state: AR county: Perry code: AR 105 zip code: 72126

=====

3. Classification

=====

Ownership of Property: Public-state

Category of Property: Structure

Number of Resources within Property:

Contributing	Noncontributing
--------------	-----------------

<u> </u>	<u> </u> buildings
<u> </u>	<u> </u> sites
<u> 1 </u>	<u> </u> structures
<u> </u>	<u> </u> objects
<u> 1 </u>	<u> 0 </u> Total

Number of contributing resources previously listed in the National Register: N/A

Name of related multiple property listing: Historic Bridges of Arkansas

=====

=====

4. State/Federal Agency Certification

=====

As the designated authority under the National Historic Preservation Act of 1986, as amended, I hereby certify that this X nomination _____ request for determination of eligibility meets the documentation standards for registering properties in the National Register of Historic Places and meets the procedural and professional requirements set forth in 36 CFR Part 60. In my opinion, the property X meets _____ does not meet the National Register Criteria. _____ See continuation sheet.

Cathryn A. Slater

Signature of certifying official

4-11-95

Date

Arkansas Historic Preservation Program
State or Federal agency and bureau

In my opinion, the property _____ meets _____ does not meet the National Register criteria. _____ See continuation sheet.

Signature of commenting or other official

Date

State or Federal agency and bureau

=====

5. National Park Service Certification

=====

I, hereby certify that this property is:

☒ entered in the National Register
_____ See continuation sheet.
☐ determined eligible for the
National Register
_____ See continuation sheet.
☐ determined not eligible for the
National Register
☐ removed from the National Register
_____ other (explain): _____

Edson H. Beall

5-12-95

Signature of Keeper

Date
of Action

=====

6. Function or Use

=====

Historic: TRANSPORTATION

Sub: Road-related

Current: TRANSPORTATION

Sub: Road-related

=====

7. Description

=====

Architectural Classification:

Other _____

Other Description: Open spandrel concrete masonry arch

Materials:	foundation	<u>Concrete</u>	roof	<u>N/A</u>
	walls	<u>Concrete balustrade</u>	other	<u>Asphalt over</u>
				<u>reinforced</u>
				<u>concrete</u>

Describe present and historic physical appearance. X See continuation sheet.

=====

8. Statement of Significance

=====

Certifying official has considered the significance of this property in relation to other properties: Local.

Applicable National Register Criteria: C

Criteria Considerations (Exceptions): N/A

Areas of Significance: ENGINEERING

Period(s) of Significance: 1941-1945 _____

Significant Dates: 1941 _____

Significant Person(s): N/A

Cultural Affiliation: N/A _____

Architect/Builder: Luten Bridge Company
Federal Works Agency Public Roads Administration

State significance of property, and justify criteria, criteria considerations, and areas and periods of significance noted above.
X See continuation sheet.

United States Department of the Interior
National Park Service

**National Register of Historic Places
Continuation Sheet**

Section number 7 Page 1

RECEIVED 413

APR 24 1995

**INTERAGENCY RESOURCES DIVISION
NATIONAL PARK SERVICE**

Description

Located on State Highway 7 at the point where it crosses the Fourche LaFave River, the Fourche LaFave River Bridge is of the open spandrel concrete masonry arch type. It consists of a total of three spans, the longest of which measures 184 feet. Its total length is 518 feet, its deck width is 26 feet and its overall width is 31.5 feet. The abutments, the two piers and the open arches that support the deck are all of reinforced concrete construction, as is the deck with its asphalt surface. A relatively elaborate concrete masonry balustrade runs the full length of each edge of the deck.

**United States Department of the Interior
National Park Service**

**National Register of Historic Places
Continuation Sheet**

Section number 8 Page 1

Significance

Constructed in 1941 the Fourche LaFave River Bridge is associated with the *World War II Era* historic context and is of the open spandrel concrete masonry deck arch type. It was erected by the Luten Bridge Company in conjunction with the Arkansas State Highway Commission and the Federal Works Agency Public Roads Administration. Given its relatively intact condition it retains sufficient integrity to remain associated with its historic period; it is thus locally eligible under Criterion C.

=====

9. Major Bibliographical References

=====

See "Historic Bridges of Arkansas" MPS Nomination, Section H.

___ See continuation sheet.

Previous documentation on file (NPS):

- preliminary determination of individual listing (36 CFR 67) has been requested.
- previously listed in the National Register
- previously determined eligible by the National Register
- designated a National Historic Landmark
- recorded by Historic American Buildings Survey # _____
- recorded by Historic American Engineering Record # _____

Primary Location of Additional Data:

- X State historic preservation office
- Other state agency
- Federal agency
- Local government
- University
- Other -- Specify Repository: _____

=====

10. Geographical Data

=====

Acreage of Property: Less than one

UTM References:	Zone	Easting	Northing	Zone	Easting	Northing
A	<u>15</u>	<u>486100</u>	<u>3867520</u>	B	<u>15</u>	_____
C	<u>15</u>	_____	_____	D	<u>15</u>	_____

___ See continuation sheet.

Verbal Boundary Description: ___ See continuation sheet.

Beginning at a point formed by the intersection of the southwestern edge of State Highway 7 with a perpendicular line running parallel with the northwestern end of the bridge and located approximately 25 feet to the northwest thereof, proceed southwesterly for a distance of approximately 25 feet to its intersection with a perpendicular line running parallel with the bridge's southwestern side; thence proceed southeasterly along said line for a distance of approximately 568 feet to its intersection with a perpendicular line; thence proceed northeasterly along said line for a distance of approximately 81.5 feet to its intersection with a perpendicular line; thence proceed northwesterly along said line for a distance of approximately 568 feet to its intersection with a perpendicular line; thence proceed southwesterly to the point of beginning.

Boundary Justification: ___ See continuation sheet.

This boundary includes all the property historically associated with this resource.

=====

11. Form Prepared By

=====

Name/Title: Ken Story, National Register/Survey Coordinator

Organization: Arkansas Historic Preservation Program Date: 04/04/95

Street & Number: 323 Center Street, Suite 1500 Telephone: (501) 324-9880

City or Town: Little Rock State: AR Zip: 72201

UNITED STATES DEPARTMENT OF THE INTERIOR
NATIONAL PARK SERVICE

NATIONAL REGISTER OF HISTORIC PLACES
EVALUATION/RETURN SHEET

REQUESTED ACTION: NOMINATION

PROPERTY Fourche LaFave River Bridge
NAME:

MULTIPLE Historic Bridges of Arkansas MPS
NAME:

STATE & COUNTY: ARKANSAS, Perry

DATE RECEIVED: 4/24/95 DATE OF PENDING LIST: 5/10/95
DATE OF 16TH DAY: 5/26/95 DATE OF 45TH DAY: 6/08/95
DATE OF WEEKLY LIST:

REFERENCE NUMBER: 95000643

NOMINATOR: STATE

REASONS FOR REVIEW:

APPEAL: N DATA PROBLEM: N LANDSCAPE: N LESS THAN 50 YEARS: N
OTHER: N PDIL: N PERIOD: N PROGRAM UNAPPROVED: N
REQUEST: N SAMPLE: N SLR DRAFT: N NATIONAL: N

COMMENT WAIVER: N

___ACCEPT ___RETURN ___REJECT _____DATE

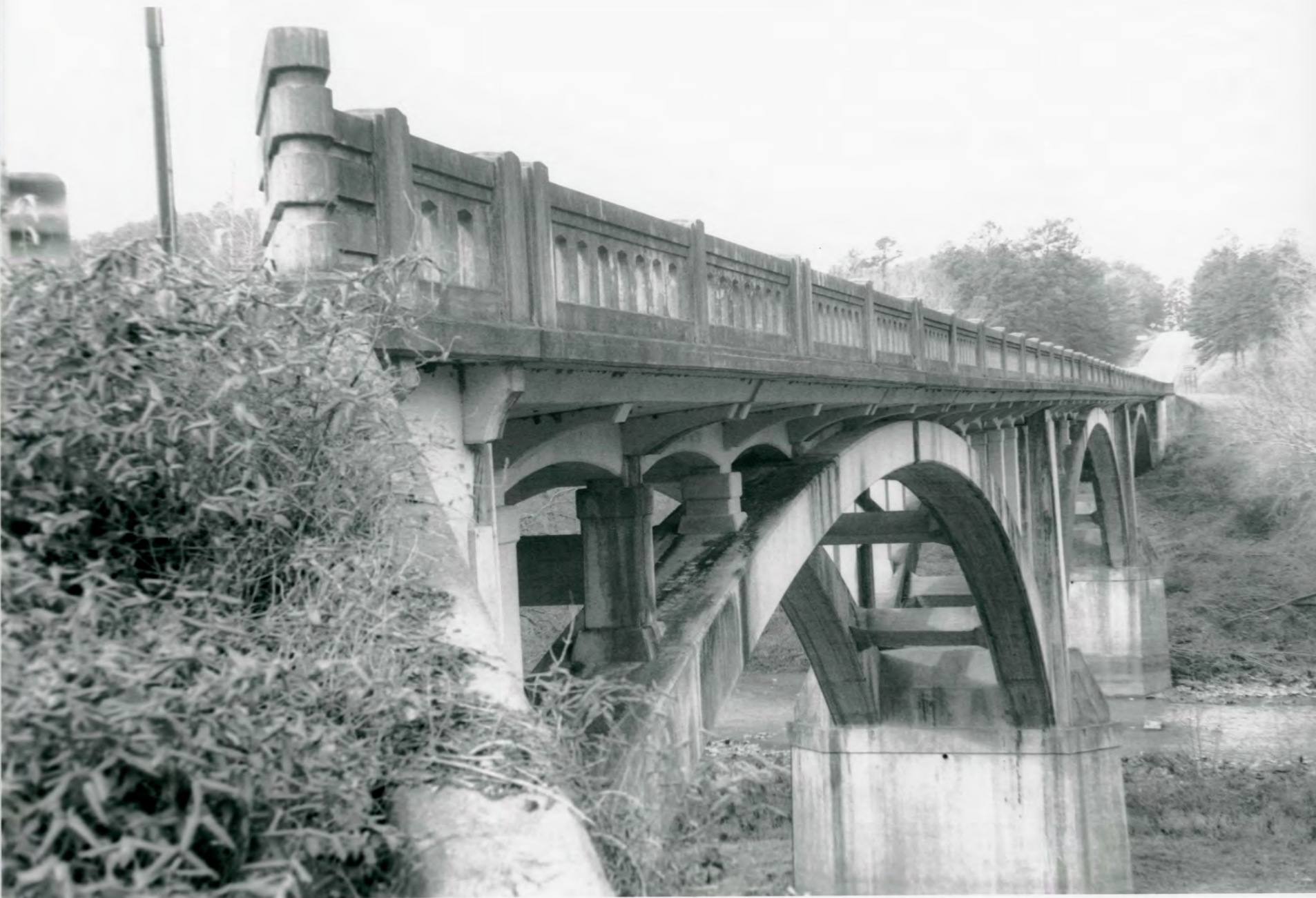
ABSTRACT/SUMMARY COMMENTS:

RECOM./CRITERIA _____

REVIEWER _____ DISCIPLINE _____

TELEPHONE _____ DATE _____

DOCUMENTATION see attached comments Y/N see attached SLR Y/N



FOURCHE LAFAYETTE RIVER BRIDGE

NIMROD VIC., PERRY CO., AR

PHOTO BY T. FERGUSON

1/93

NEG. ON FILE AT AHP

VIEW FROM NW

FOURCHE LA FAVE RIVER
LUTEN BRIDGE COMPANY
CONTRACTOR.

ARKANSAS
STATE HIGHWAY COMMISSION
AND THE
FEDERAL WORKS AGENCY
PUBLIC ROADS ADMINISTRATION

1940

BRIDGE NO.

FOURCHE LAFAUE RIVER BRIDGE

NIMROD VIC., PERRY CO., AR

PHOTO BY T. FERGUSON

1/93

NEG. ON FILE AT AHPP

PLAQUE DETAIL



FOURCHE LAFAUE RIVER BRIDGE

NIMROD VIC., PERRY CO., AR

PHOTO BY T. FERGUSON

1/93

NEG. ON FILE AT AHPP

PIER DETAIL



FOURCHE LAFOUR RIVER BRIDGE

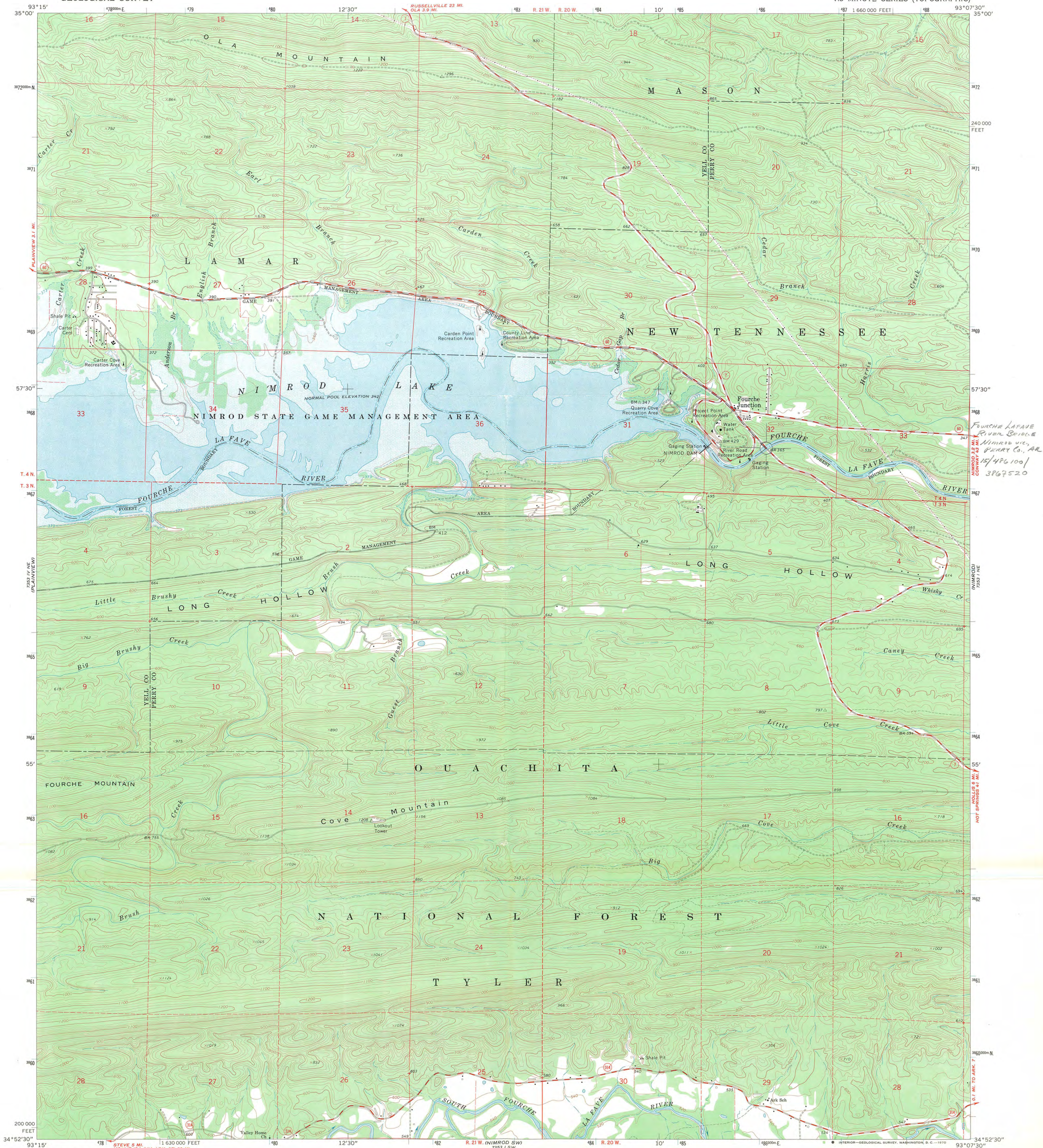
NIMROD VIC., PERRY CO., AR

PHOTO BY T. FERGUSON

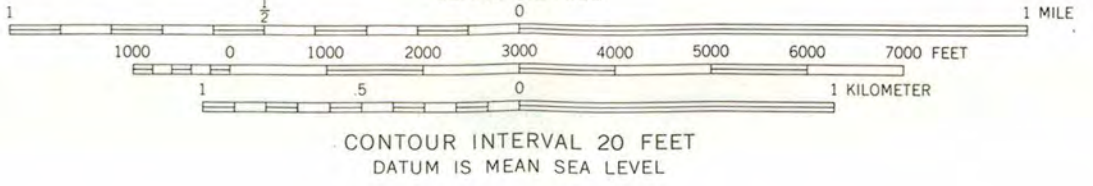
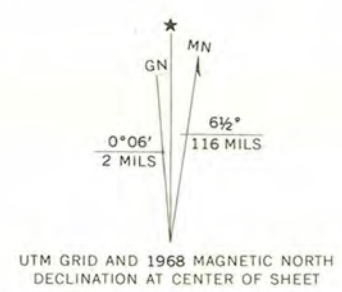
1/93

NEG. ON FILE AT AHPP

VIEW FROM SW



Maped by U. S. Forest Service
Edited and published by the Geological Survey
Control by USGS, USC&GS, and USCE
Topography by photogrammetric methods from aerial
photographs taken 1961 and 1963. Field checked 1968
Polyconic projection. 1927 North American datum
10,000-foot grid based on Arkansas coordinate system, north zone
1000-meter Universal Transverse Mercator grid ticks,
zone 15, shown in blue
Areas covered by dashed light-blue pattern
are subject to controlled inundation
Fine red dashed lines indicate selected fence and field lines where
generally visible on aerial photographs. This information is unchecked



ROAD CLASSIFICATION
Medium-duty ——— Light-duty ———
Unimproved dirt ———
State Route ———

FOR SALE BY U.S. GEOLOGICAL SURVEY, DENVER, COLORADO 80225, OR WASHINGTON, D. C. 20242
AND BY THE ARKANSAS GEOLOGICAL COMMISSION, LITTLE ROCK, ARKANSAS 72201
A FOLDER DESCRIBING TOPOGRAPHIC MAPS AND SYMBOLS IS AVAILABLE ON REQUEST

NIMROD DAM, ARK.
N3452.5—W9307.5/7.5
1968
AMS 7353 1 NW—SERIES V884