

ited hall er Site

id invitation
e new parish
arish in Van-
d, The Most
A. Conholly,
diocese, an-

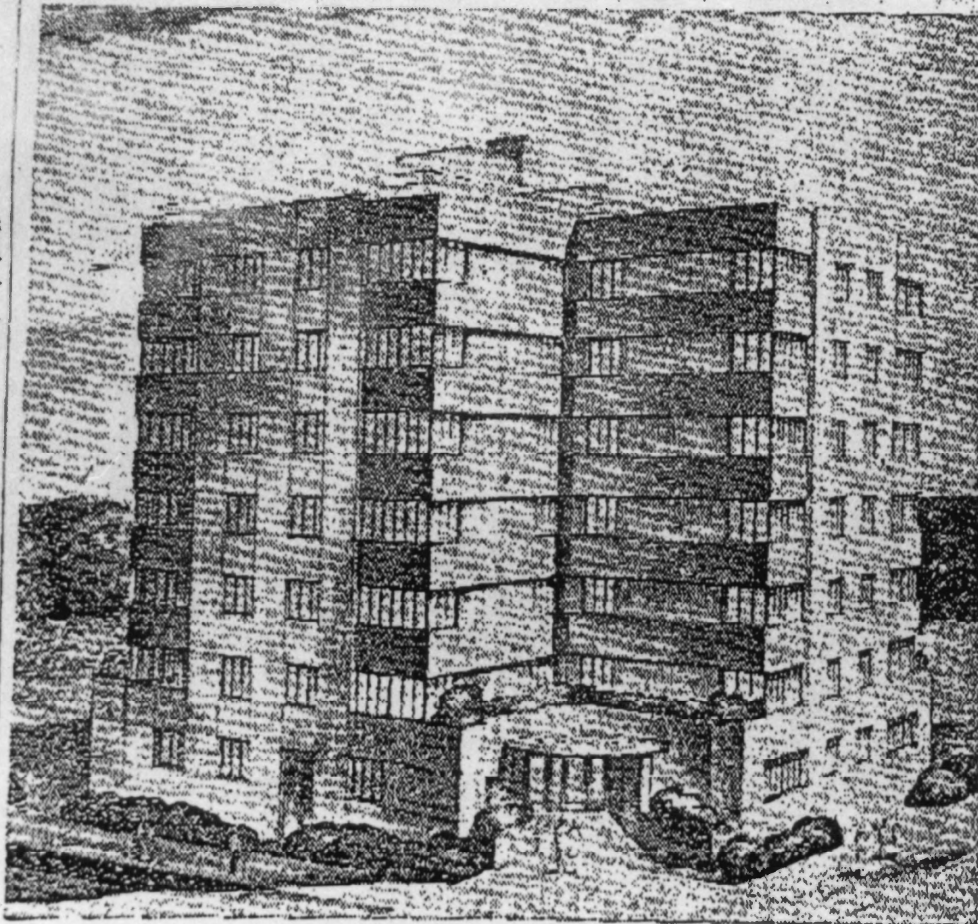
at the bish-
Ave., Seattle,

re requested
hey may bid

ite, 210 W.
R. Nieman,
r; L. O. Col-
Vancouver;
o., 213 East
L. Beadle,
ancouver; A.
andy Blvd.,
son, 2306 N.
S. P. Lon-
Portland;
5226 N. -E.

lurabing &
ned Equip-

Medford Apartment



Pictured above is the Medford Plaza Apartments, to be built by a recently-incorporated group of Medford and Portland men. The unfinished project was purchased from the Coates Construction Co. Plans were prepared by Architect Don Byers and Harry Boland, de-

Medford Group Formed to Build New Apartment

(D. J. of C.—October 30, 1950)

Medford.—Articles of incorporation were filed in Salem last week for Medford Plaza Apartments, Inc., of Medford. Ben J. Trowbridge, partner in Trowbridge & Flynn Electric Co.; Contractor M. O. Bessonette, and Denton G. Burdick, Jr., signed the incorporation papers.

The apartment building will be constructed by Plaza Builders. M. O. Bessonette is resident agent for both Medford Plaza Apartments, Inc., and Plaza Builders, with headquarters at 613 E. Jackson St. in Medford.

The Coates Construction Co. of Portland originally had planned to construct the building, and had received a \$376,400 commitment for its construction. However, due to delays caused by other projects and by the necessity of city council approval of a setback requirement to conform with the building plans, Coats decided to sell his share of the project.

School F At Euge

(D. J. of

Eugene,

here has a

new Euge

the bid i

sued imm

The dis

hold a

school-bid

The str

Eugene A

Smith, wi

\$3,000,000

Office To Ser

(D. J. of

Another

importance

Columbia

Washington

taken Nov.

mission of

branch off

tion is bei

amount of

destined t

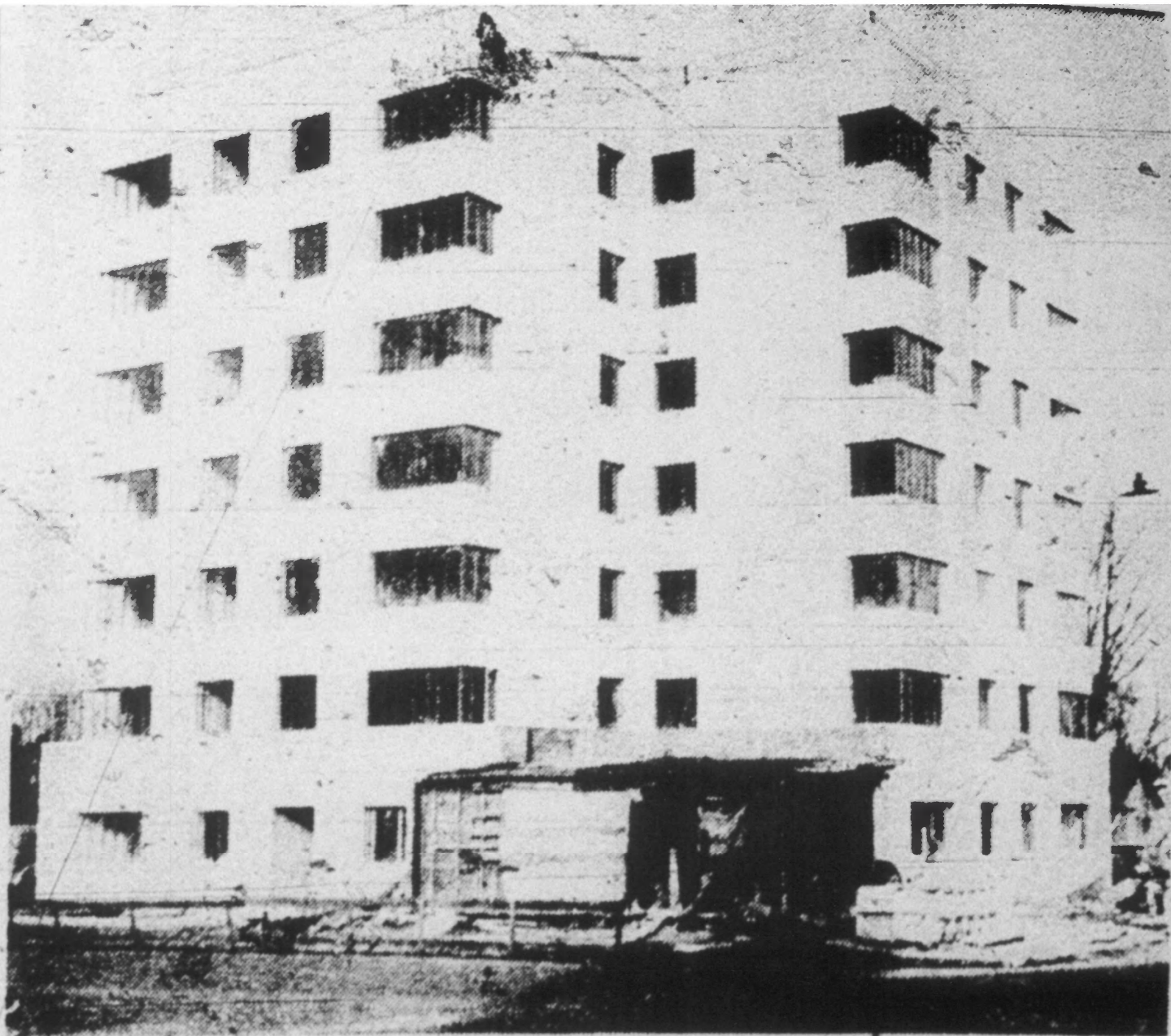
midcentie

Commissio

MEDFORD PLAZA APTS.

MEDFORD, JACKSON CTY, OR

1 of 12



NEWEST, BIGGEST APARTMENT—Medford's newest and biggest apartment house, the Plaza, located at West 11th street and Oakdale avenue, is nearing completion as shown in the picture above. It was built by a group of Medford men, and when completed will have cost some \$550,000. The seven-story structure has been under construction since early this year.

MEDFORD PLAZA APTS
MEDFORD, JACKSON CTY, OR

2 of 12



MEDFORD

PLAZA

APTS

WISOPROD.

JACKSON

CITY, OR

3 of 12



MSDFORD PLAZA APTS

MSDFORD, JACKSON CTY, OR

4 OF 12



MEDFORD

PLAZA

APTS

WILSONFORD,

JACKSON

CTY, OR

5

of

12



MSO FORD PLAZA APTS

MSO FORD, JACKSON CITY, OR

6 of 12

Medford Plaza

235



MSDFORD PLAZA APTS

MSDFORD, JACKSON CTY, OR

10 p 12



MSDF020 PLAZA APTS

MSDF020, JACKSON CTY. OR

9 of 12



MEDFORD PLAZA APTS

MEDFORD, WILKSON CITY, OR

10 or 12



MISFORD PLAZA APTS

MISFORD, JACKSON CTY, OR

11 of 12



MEDFORD PLAZA APTS

MEDFORD, JACKSON CITY, OR

12 of 12