







FRANKLIN DELANO ROOSEVELT

PRESIDENT OF THE UNITED STATES
1933 - 1945



SEE ONE-THIRD OF A NATION ILL-HOUSED ILL-CARED ILL-NOURISHED

THE NATIONAL HOUSING AND COMMUNITY DEVELOPMENT ACT OF 1961 WAS THE FIRST FEDERAL LAW TO REQUIRE FEDERAL AGENCIES TO CONSIDER THE NEEDS OF THE HOMELESS AND UNDERHOUSED IN THEIR PLANNING AND PROGRAMS

HOUSED, ILL-CLAD, ILL-NOURISHED

PROGRESS
ADD MORE
OF THOSE
S WHETHER
IGH FOR
OO LITTLE.






I HAVE SEEN WAR

I HAVE SEEN WAR ON LAND AND SEA. I HAVE SEEN
BLOOD RUNNING FROM THE WOUNDED. I HAVE
SEEN THE DEAD IN THE MUD. I HAVE SEEN CITIES
DESTROYED. I HAVE SEEN CHILDREN STARVING.
I HAVE SEEN THE AGONY OF MOTHERS AND WIVES.

I HATE WAR



THEY (WHO) SEEK TO ESTABLISH
SYSTEMS OF GOVERNMENT BASED ON
THE REGIMENTATION OF ALL HUMAN
BEINGS BY A HANDFUL OF INDIVIDUAL
RULERS... CALL THIS A NEW ORDER.
IT IS NOT NEW AND IT IS NOT ORDER.

















THE FIRST
JAPANESE CHERRY TREES
PRESENTED TO
THE CITY OF WASHINGTON
AS A GESTURE OF FRIENDSHIP
AND GOOD WILL BY THE CITY OF
TOKYO, WERE PLANTED ON THIS SITE,
MARCH 27, 1912.

NATIONAL CAPITAL SESQUICENTENNIAL COMMISSION
1950











EAST WINDSOR BANK
BATAVIA, N.Y.





ICE

COLD



NO PARKING

NO ENTRY

NO ENTRY

NO PARKING

NO PARKING

NO PARKING

NO PARKING

NO PARKING

NO PARKING

NO PARKING

NO PARKING

NO PARKING

NO PARKING

NO PARKING

NO PARKING

NO PARKING

NO PARKING

NO PARKING

NO PARKING

NO PARKING

NO PARKING

NO LITTER

NO LITTER

NO LITTER

NO LITTER

NO LITTER

NO LITTER

NO LITTER

NO LITTER

NO LITTER

NO LITTER

NO LITTER

NO LITTER

NO LITTER

NO LITTER





THESE 1,800 FLOWERING CHERRIES
AND OTHER TREES WERE PLANTED
ON HAINS POINT IN 1966-1968
IN HONOR OF
PRESIDENT AND MRS. LYNDON B. JOHNSON
BY FRIENDS IN GRATITUDE FOR
THEIR INSPIRING LEADERSHIP
AND EFFORTS TO ENHANCE
THE BEAUTY OF AMERICA.

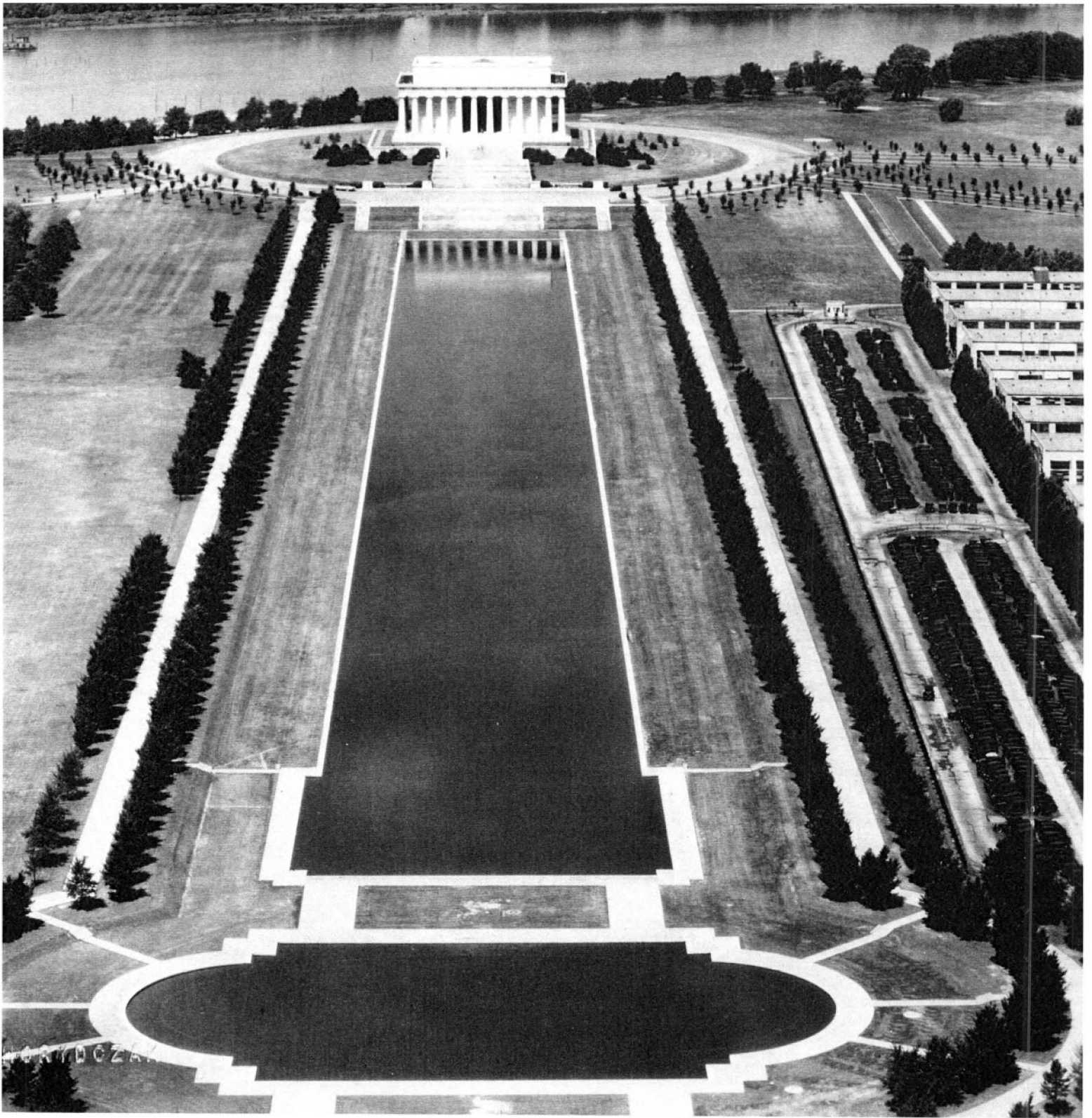






GRAFFITI: "DANNY" "MIRAGE" "1988"

12-10



East and West Potomac Parks
Historic District

Washington, DC

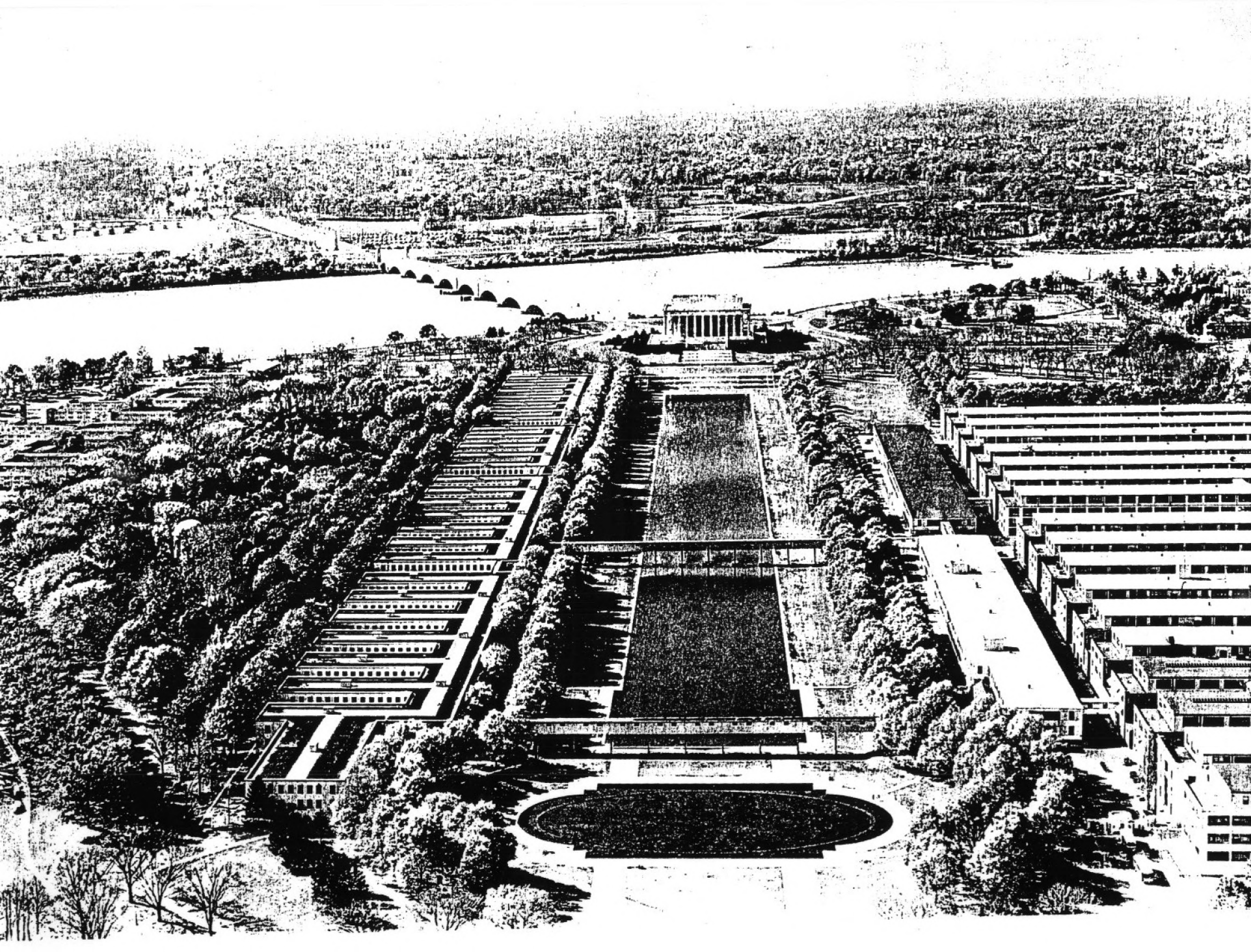
Historic Photo 1 of 31



East and West Potomac Parks
Historic District

Washington, DC

Historic Photo 2 of 31



East and West Potomac Parks

Historic District

Washington, DC

Historic Photo 3 of 31



Photograph by Capt. Albert W. Stevens

EVEN AS THE MOODS OF NATURE VARY, SO THE LINCOLN MEMORIAL REFLECTS NEW BEAUTY IN CHANGING LIGHTS AND SHADOWS

The soothing harmony of its line and form, with its colossal approaches, is fully appreciated when seen from the air. What infinite melody it suggests to those who feel that "architecture is frozen music"! The Arlington Memorial Bridge in the background (see, also, opposite page, and Color Plate XVI).

East and West Potomac Parks

Historic District

Washington, DC

Historic Photo 4 of 31



© National Geographic Society

Finlay Direct Color Photograph by Clifton Adams

STROLLERS ON THE GRASSY BANKS OF THE LINCOLN MEMORIAL POOL

Its placid waters reflect both the impressive temple to Lincoln and Washington's towering shaft. Although more than 2000 feet long and 160 feet wide, the pool nowhere attains a depth greater than three feet and affords a safe and popular place for the activities of juvenile yachtsmen and for skaters in winter. At the left are the wartime emergency Munitions Buildings, and topping the trees the old Post Office tower. Domes of the National Museum and Capitol flank the Monument.

east and west Potomac Parks
Historic District
Washington, DC
Historic Photo 5 of 31



© National Geographic Society

Finlay Photograph by Clifton Adams

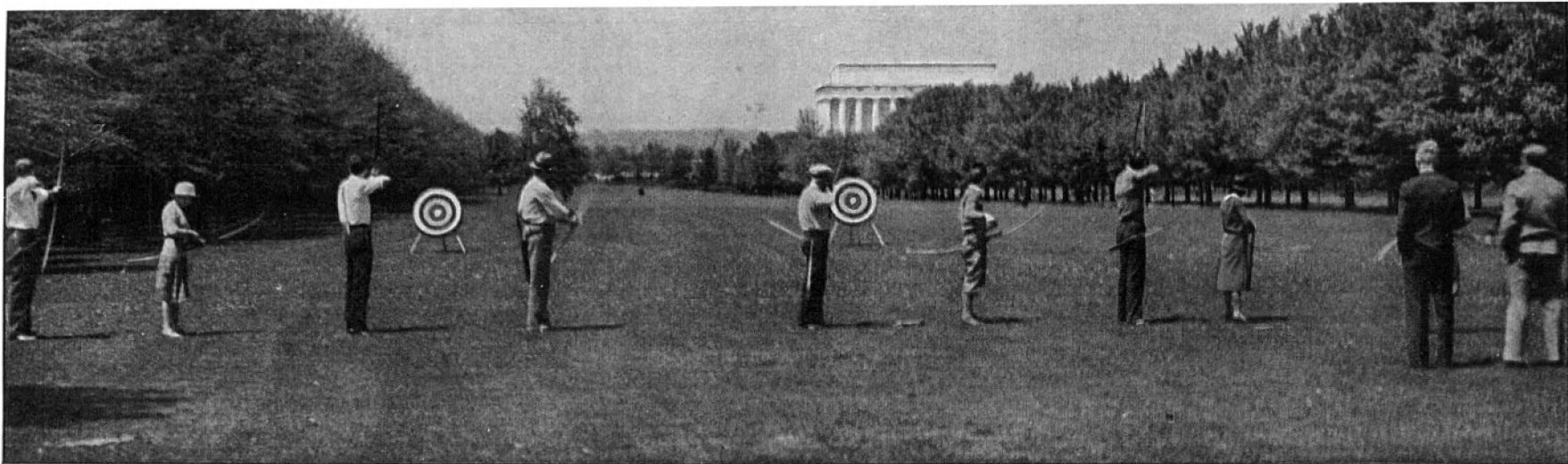
THE NEW WORLD'S NOBLEST OBELISK

Washington Monument towers to a height of $555\frac{7}{8}$ feet. It was begun in 1848 but not completed until 1885. The line visible in the masonry just above the tree tops marks the place where construction was suspended for 23 years. At night from the chamber at the top of the Monument airplane signal lights warn night flyers of the towering shaft's whereabouts.

East and West Potomac Park
Historic District

Washington, DC

Historic Photo 6 of 31



THE WITCHERY OF ARCHERY

On summer afternoons devotees of the ancient sport practice for their annual tournament.



© National Geographic Society

Finlay Direct Color Photographs by Clifton Adams

WASHINGTON PARKS AFFORD A PEERLESS PLAYGROUND

Golf, tennis, polo, horseback riding, croquet, miniature golf, motoring, picnicking, and to a limited extent bathing and boating are among the

East and West Potomac Parks
Historic District
Washington, DC

Historic Photo 7 of 31



© National Geographic Society

Natural Color Photograph by Maynard Owen Williams

IN COMMEMORATION OF THE INVENTOR OF THE "MONITOR"

John Ericsson's craft was instrumental in revolutionizing naval warfare. His memorial, erected jointly by the United States Government and private contributions from Americans of Scandinavian descent, was dedicated May 29, 1926. For sentimental and historical reasons it was placed near the Lincoln Memorial, which is visible through the trees at the right.

East and West Potomac Parks

Historic District

Washington, DC

Historic Photo 8 of 31



© Theodor Horydczak

JAPANESE CHERRY BLOSSOMS IN BLOOM AROUND THE TIDAL BASIN

A gift from the Municipal Council of Tokyo, many hundreds of these trees line the banks of the Tidal Basin and the Potomac Park Driveway, made largely of land reclaimed from the Potomac River by dredging and filling (see, also, text, page 590, and Color Plate V).

East and West Potomac Parks

Historic District

Washington, DC

Historic Photo 9 of 31



east and west Potomac Parks
Historic District

Washington, DC

Historic Photo 10 of 31



1000A.

East and West Potomac Parks
Historic District

Washington, DC

Historic Photo 11 of 31



Jefferson Memorial, Washington, D.C., 1941.

East and West Potomac Parks
Historic District

Washington, DC

Historic Photo 12 of 31



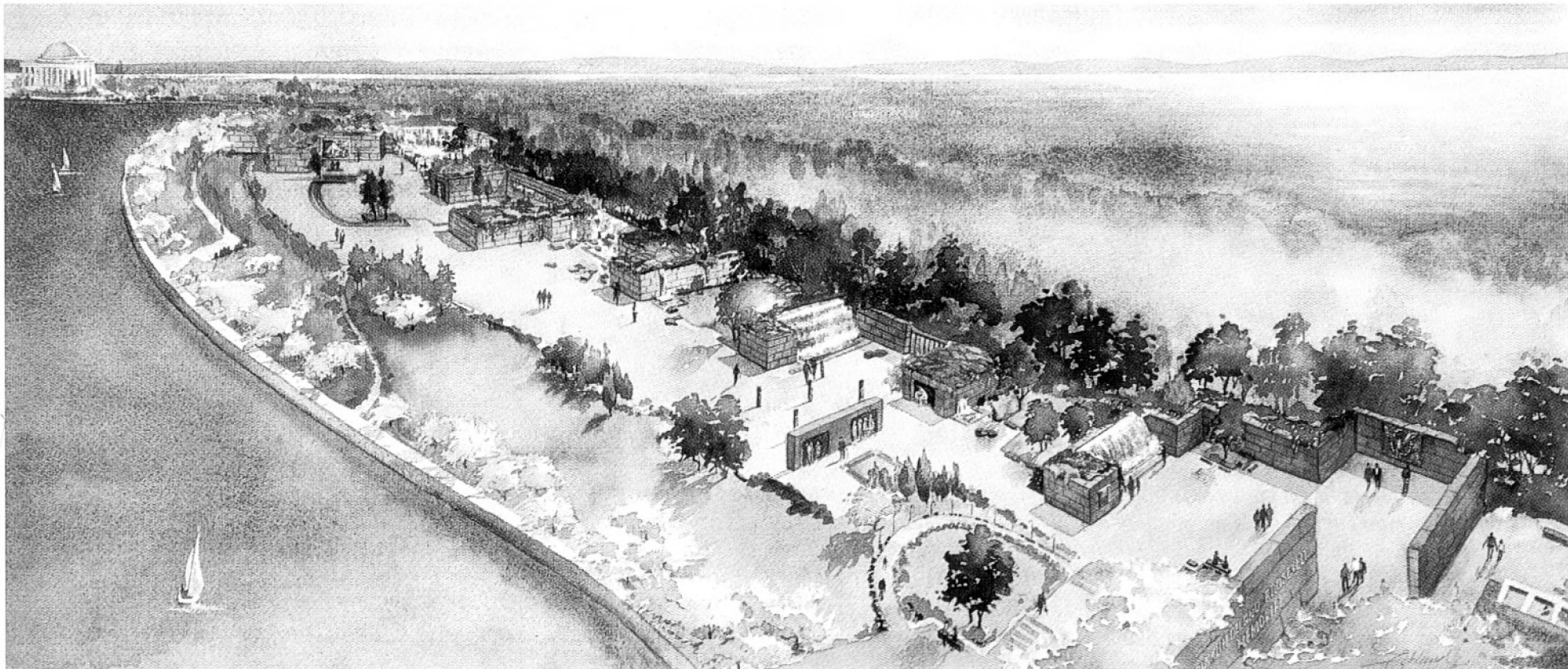
east and west Potomac Parks
Historic District
Washington, DC

Historic Photo 13 of 31



East and West Potomac Parks
Historic District
Washington, DC

Historic Photo 14 of 31



East and West Potomac Parks
Historic District

Washington, DC

Historic Photo 15 of 31



East and West Potomac Parks
Historic District
Washington, DC

Photo 16 of 31



East and West Potomac Parks

Historic District

Washington, DC

Photo 17 of 31



East and West Potomac Parks

Historic District

Washington, DC

Historic Photo 18 of 31



East and West Potomac Parks

Historic District

Washington, DC

Historic Photo 19 of 31



AIR PICTURE OF EAST POTOMAC
PARK
1922

east and west Potomac Parks
Historic District

washington, DC

Historic photo 20 of 31



POTOMAC PARK, WASH. D.C.

East and West Potomac Parks
Historic District

Washington, DC

Historic photo 21 of 31



East and West Potomac Parks
Historic District

Washington, DC

Historic Photo 22 of 31



East and West Potomac Parks

Historic District

Washington DC

Historic Photo 23 of 31



East and West Potomac Parks

Historic District

Washington, DC

Historic Photo 24 of 31

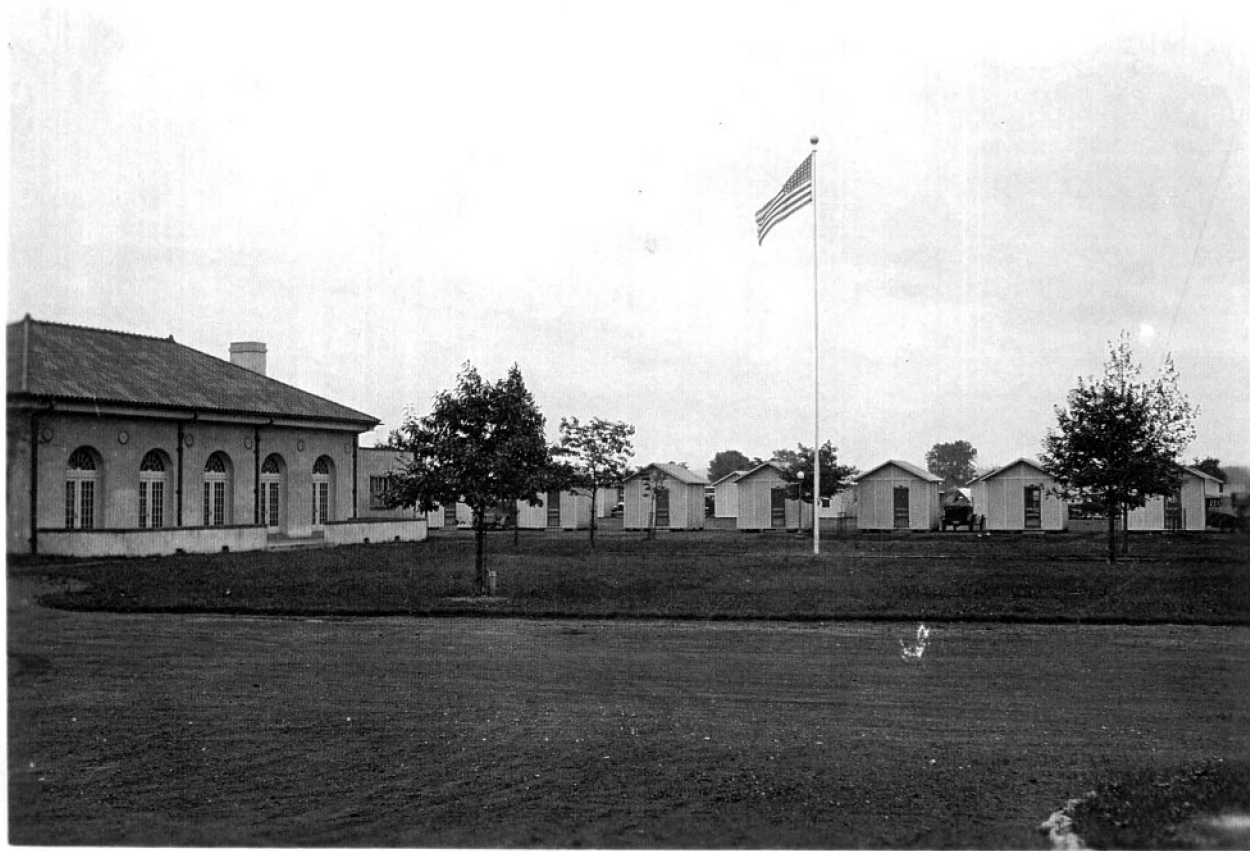


East and West Potomac Parks

Historic District

Washington, DC

Historic Photo 25 of 31



EAST POTOMAC PARK~ TOURIST CAMP
SHOWING FIELD HOUSE & NEW BUNGALOWS
June 26, 1927

ast and west Potomac Parks
Historic District

Washington, DC

Historic Photo 26 of 31



Photograph by Capt. Albert W. Stevens

WASHINGTON'S TOURIST CAMP FOR THOSE WHO TAKE THE OPEN ROAD

Since 1921 thousands of travelers have made good use of the model tourist camp in East Potomac Park. Here are permanent tents for rent, with hot and cold water, shower baths, a gasoline filling station, a laundry, and a commissariat where provisions may be obtained at cost. Equipped with playgrounds for children, well-laid-out streets, sanitary sewerage, the camp is a city in miniature. It is screened by trees from Potomac Park Driveway, which surrounds it.

East and West Potomac Parks

Historic District

Washington, DC

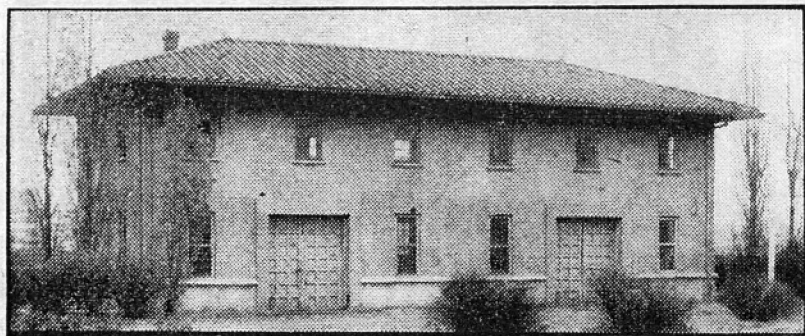
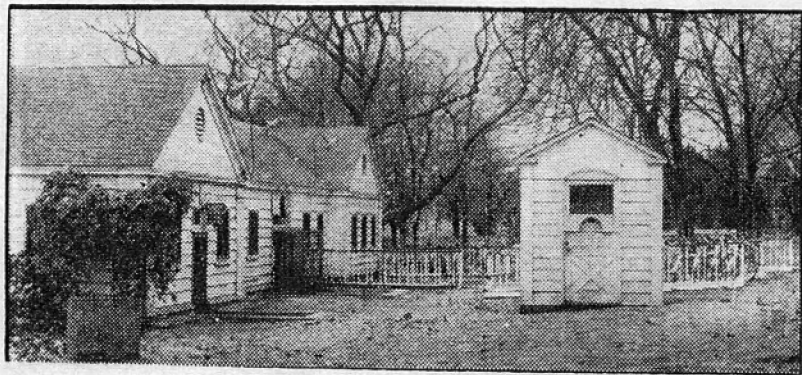
Historic Photo 27 of 31



East and West Potomac Parks
Historic District

Washington, DC

Historic Photo 28 of 31



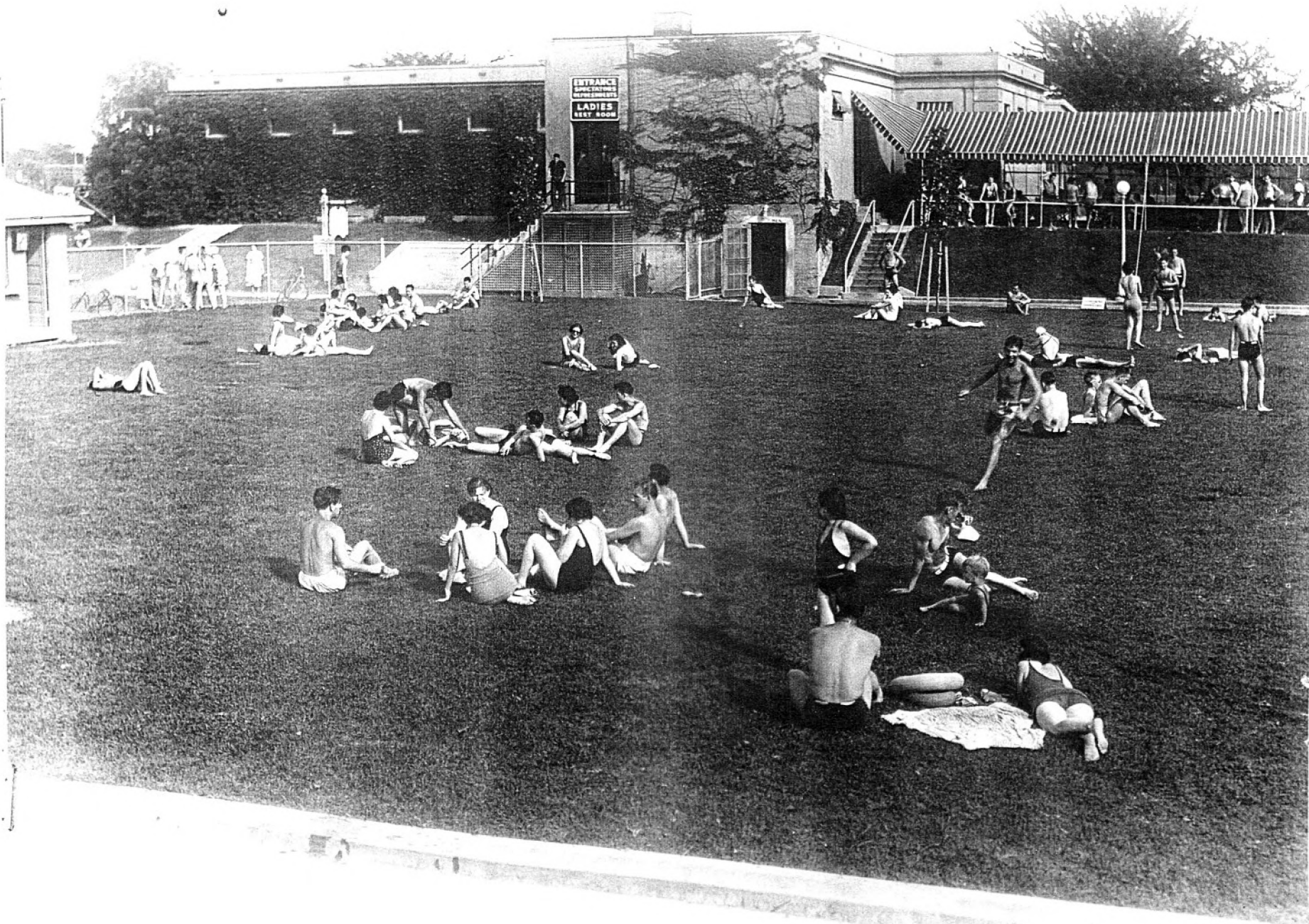
Top, the present bicycle "base" at the Tidal Basin. Below, its future home near the Railroad Bridge.

east and west Potomac Parks

Historic District

Washington, DC

Historic Photo 29 of 31

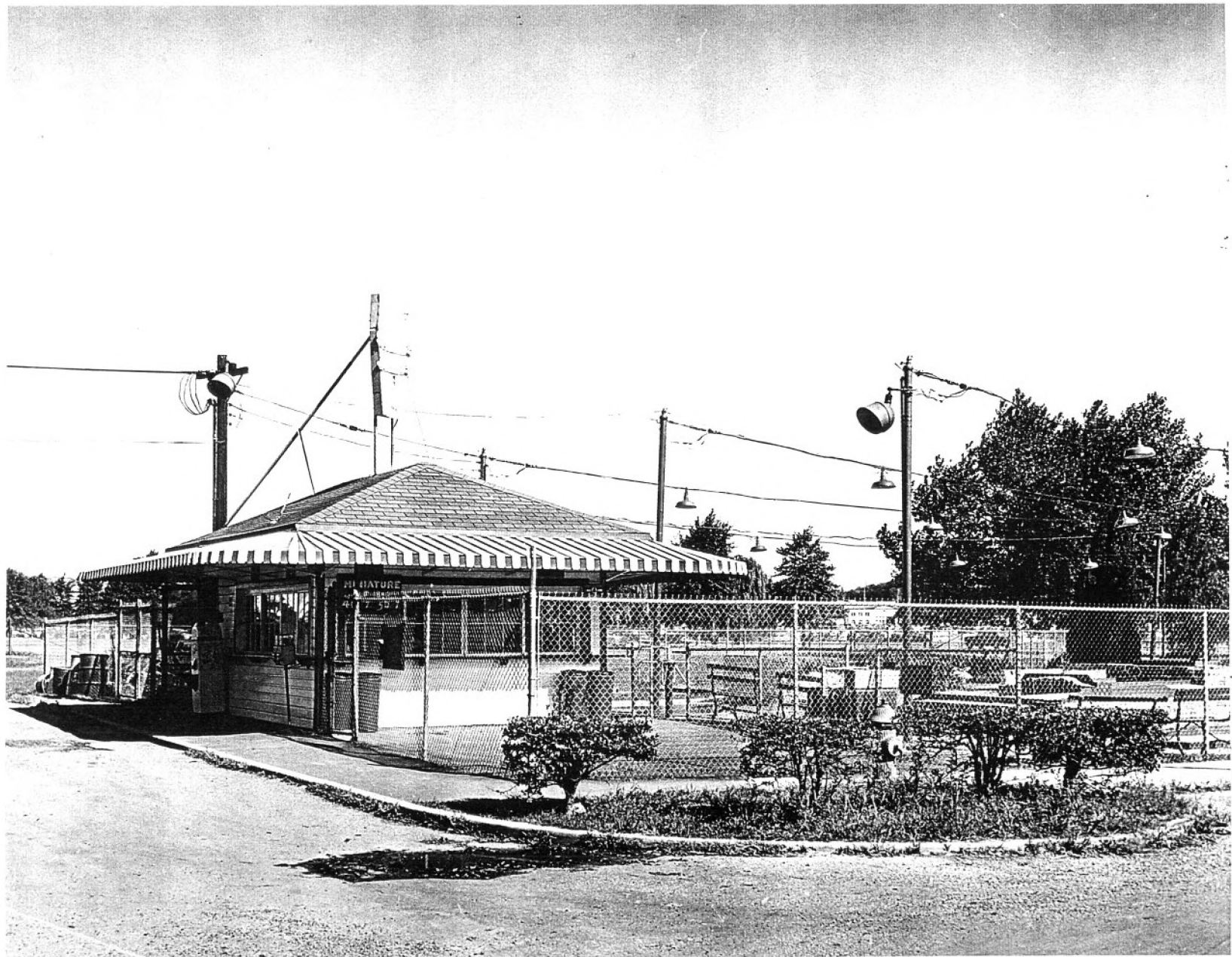


East and West Potomac Parks

Historic District

Washington, DC

Historic Photo 30 of 31



East and West Potomac Parks

Historic District

Washington, DC

Historic Photo 31 of 31



UNITED STATES DEPARTMENT OF THE INTERIOR
NATIONAL PARK SERVICE

**NATIONAL REGISTER OF HISTORIC PLACES
PROPERTY PHOTOGRAPH FORM**

(Type all entries - attach to or enclose with photograph)

1. NAME		
COMMON	AND/OR HISTORIC	NUMERIC CODE (Assigned by NPS)
East and West Potomac Parks	Potomac Flats	11/30/73
2. LOCATION		
STATE	COUNTY	TOWN
District of Columbia	District of Columbia	Washington
STREET AND NUMBER area bounded by Constitution Avenue, 17th Street, Independence Avenue, Washington Channel, Potomac River, and Rock Creek Park		
3. PHOTO REFERENCE		
PHOTO CREDIT	DATE	NEGATIVE FILED AT
National Park Service, National Capital Parks	April 7, 1957	National Capital Parks 1100 Ohio Drive, S.W.
4. IDENTIFICATION		
DESCRIBE VIEW, DIRECTION, ETC.		

West Potomac Park area around the Tidal Basin, Jefferson Memorial on the left, inlet bridge in the background on the right. Boat ride concession around the Tidal Basin in the foreground.



NATIONAL REGISTER OF HISTORIC PLACES
PROPERTY PHOTOGRAPH FORM

(Type all entries - attach to or enclose with photograph)



1. NAME		
COMMON	AND/OR HISTORIC	NUMERIC CODE (Assigned by NPS)
East and West Potomac Parks	Potomac Flats	NOV 30 1973
2. LOCATION		
STATE District of Columbia	COUNTY District of Columbia	TOWN Washington
STREET AND NUMBER area bounded by Constitution Avenue, 17th Street, Independence Avenue, Washington Channel, Potomac River and Rock Creek Park		
3. PHOTO REFERENCE		
PHOTO CREDIT National Park Service National Capital Parks	DATE April 7, 1957	NEGATIVE FILED AT National Capital Parks National Park Service
4. IDENTIFICATION		
DESCRIBE VIEW, DIRECTION, ETC.		

Tidal Basin with Japanese Cherry Trees bordering it, Kutz Memorial Bridge to the right. Washington Monument in the background.