

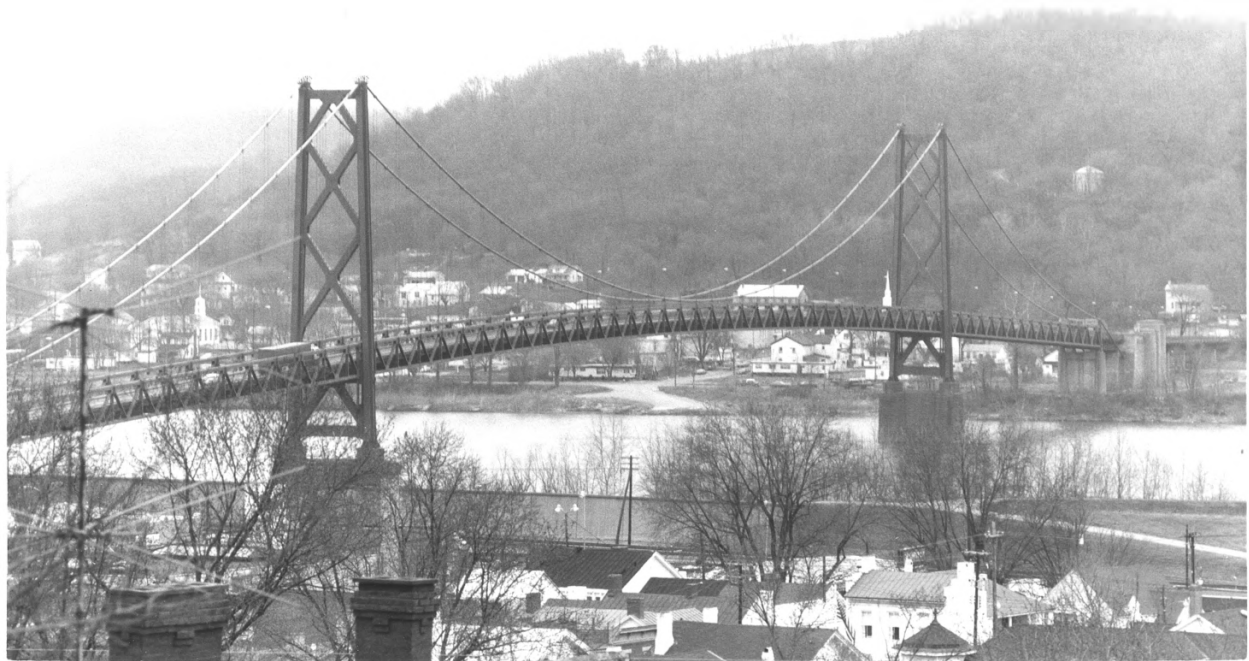
1. MAYSVILLE-ABERDEEN BRIDGE
2. Aberdeen, Brown County, Ohio
Maysville, Mason County, Kentucky
3. Doug Loescher
4. February, 1983
5. City of Maysville, Maysville, Kentucky
6. Bridge and Kentucky approach, looking
north toward Ohio.
7. Photo # **1**



- 1) MAYSVILLE--ABERDEEN BRIDGE
- 2) Aberdeen, Brown County, Ohio
Maysville, Mason County, Kentucky
- 3) Steve Gordon
- 4) March 9, 1983
- 5) Kentucky Heritage Council
- 6) Bridge, looking S toward Maysville
- 7) Photo #2



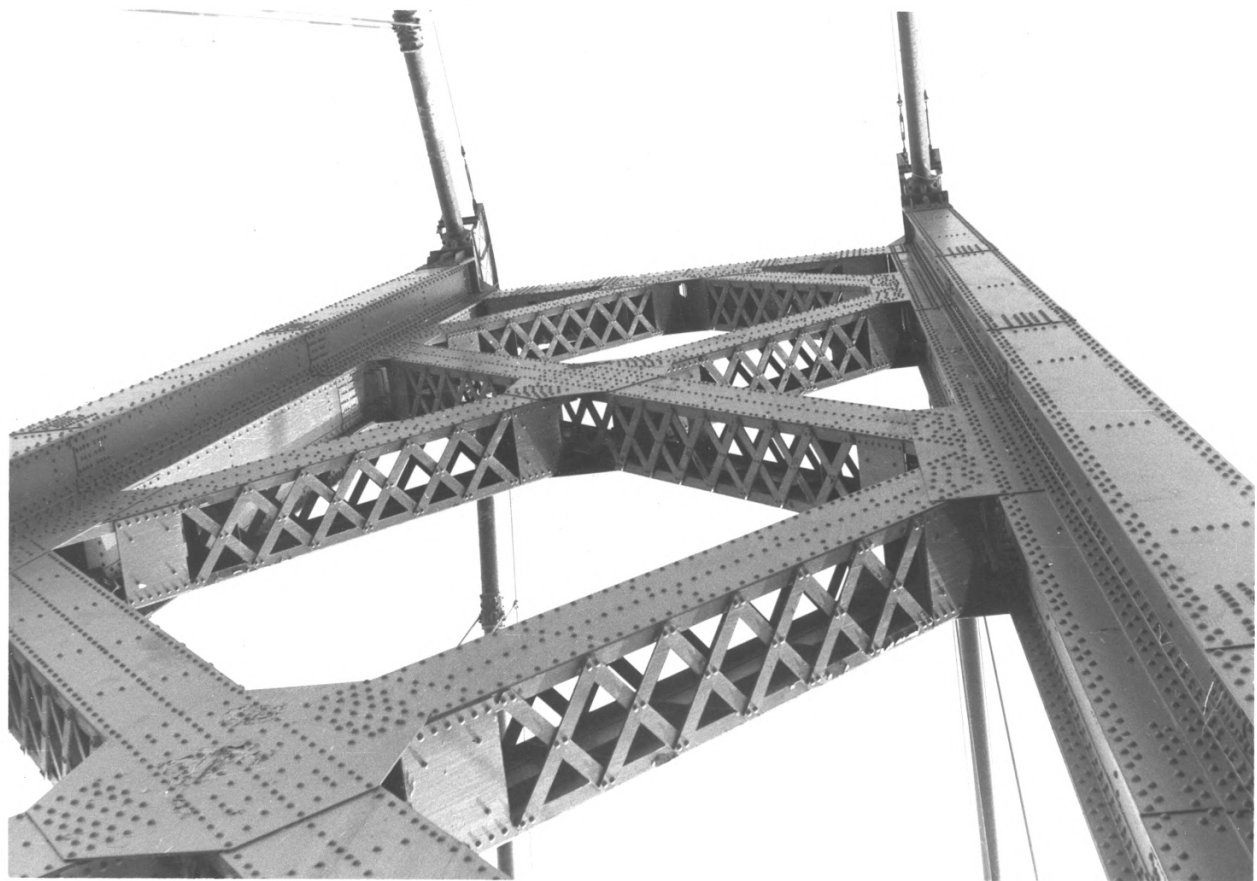
- 1) MAYSVILLE-ABERDEEN BRIDGE
- 2) Aberdeen, Brown County, Ohio
Maysville, Mason County, Kentucky
- 3) Steve Gordon
- 4) March 9, 1983
- 5) Kentucky Heritage Council
- 6) Bridge, looking downriver towards
Maysville
- 7) Photo #3



- 1) MAYSVILLE-ABERDEEN BRIDGE
- 2) Aberdeen, Brown County, Ohio
Maysville, Mason County, Kentucky
- 3) Steve Gordon
- 4) March 9, 1983
- 5) Kentucky Heritage Council
- 6) Bridge, looking N toward Aberdeen
- 7) Photo #4



1. MAYSVILLE-ABERDEEN BRIDGE
2. Aberdeen, Brown County, Ohio
Maysville, Mason County, Kentucky
3. Doug Loescher
4. February, 1983
5. City of Maysville, Maysville, Kentucky
6. South tower, looking north
7. Photo # 5



1. MAYSVILLE-ABERDEEN BRIDGE
2. Aberdeen, Brown County, Ohio
Maysville, Mason County, Kentucky
3. Doug Loescher
4. February, 1983
5. City of Maysville, Maysville, Kentucky
6. South tower, detail view.
7. Photo # 6



1. MAYSVILLE-ABERDEEN BRIDGE
2. Aberdeen, Brown County, Ohio
Maysville, Mason County, Kentucky
3. Doug Loescher
4. February, 1983
5. City of Maysville, Maysville, Kentucky
6. South tower, looking NE
7. Photo # 7



1. MAYSVILLE-ABERDEEN BRIDGE
2. Aberdeen, Brown County, Ohio
Maysville, Mason County, Kentucky
3. Doug Loescher
4. February, 1983
5. City of Maysville, Maysville, Kentucky
6. Base of south tower, looking north toward
Aberdeen.
7. Photo # 8

MAYSVILLE - ABERDEEN
BRIDGE

OHIO RIVER

BUILT BY
THE
STATE HIGHWAY COMMISSION
OF KENTUCKY, 1931.

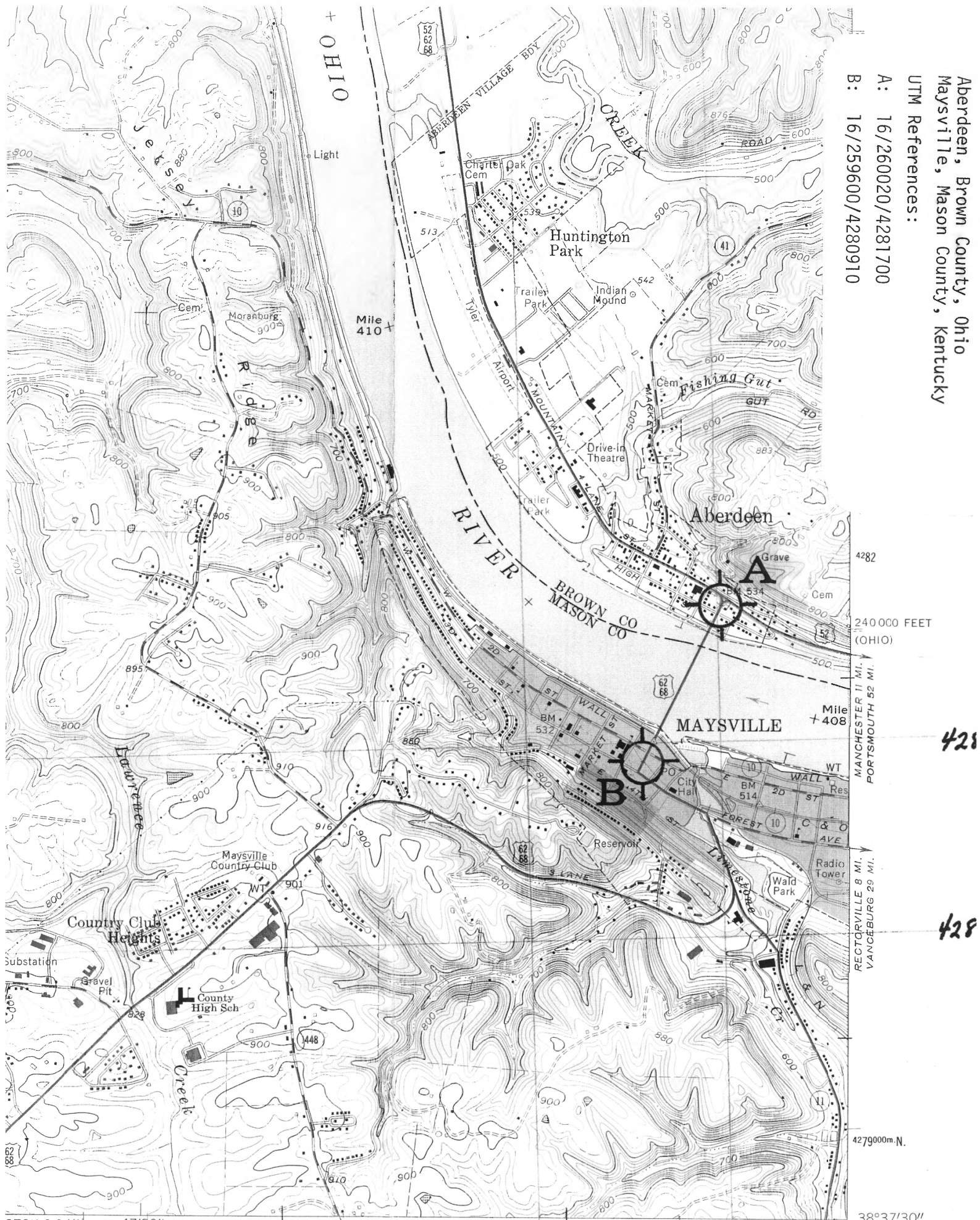
CAPACITY - 15 TON TRUCKS

1. MAYSVILLE-ABERDEEN BRIDGE
2. Aberdeen, Brown County, Ohio
Maysville, Mason County, Kentucky
3. Doug Loescher
4. February, 1983
5. City of Maysville, Maysville, Kentucky
6. Bronze plaque, south anchorage
7. Photo # 9

Aberdeen, Brown County, Ohio
 Maysville, Mason County, Kentucky

UTM References:

- A: 16/260020/4281700
- B: 16/259600/4280910



428

428

GTON 0.8 MI. 47'30" 2.2 MI. TO KY. II INTERIOR-GEOLOGICAL SURVEY, RESTON, VIRGINIA-1976 1640000 FEET (OHIO) 38°37'30"
 CON 61 MI. 259000m.E. LEWISBURG 6 MI. 83°45'

1 MILE
 7000 FEET

ROAD CLASSIFICATION

Heavy duty Light duty

(ORANGE)
 4261 11