



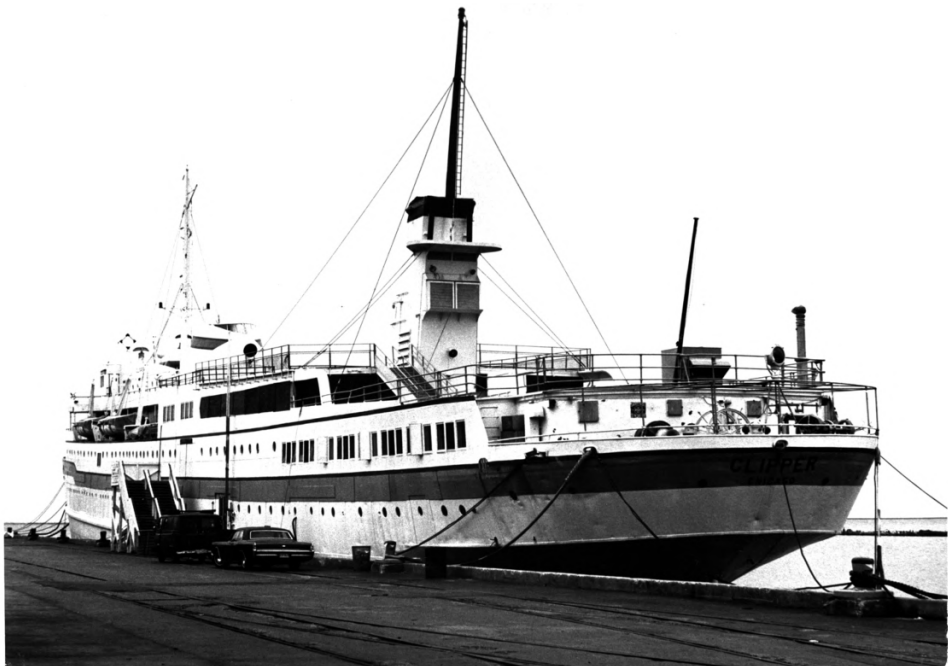
S/S CLIPPER
Chicago, Illinois

November 14, 1982

Harry Weese and Associates
10 West Hubbard
Chicago, Illinois 60610

photo number 1

Bow and port sides of the S/S Clipper as moored
at the south dock at Navy Pier, Chicago.



S/S CLIPPER
Chicago, Illinois

November 14, 1982

Harry Weese and Associates
10 West Hubbard
Chicago, Illinois 60610

photo number 2

Stern and port sides of the S/S Clipper as moored
at the south dock at Navy Pier, Chicago.



S/S CLIPPER

November 14, 1982

Chicago, Illinois

Harry Weese and Associates

10 West Hubbard

Chicago, Illinois 60610

photo number 3

The smoke stack in this photograph, taken across the Sun Deck looking toward the bow, serves only an aesthetic function.



S/S CLIPPER
Chicago, Illinois

November 14, 1982

Harry Weese and Associates
10 West Hubbard
Chicago, Illinois 60610

photo number 4

The CLIPPER has two promenades on the Sports Deck. This is the one of the port side. The promenades flank a 144 seat motion picture theater and a snack bar called the Soda Bowl.



S/S CLIPPER
Chicago, Illinois

November 14, 1982

Harry Weese and Associates
10 West Hubbard
Chicago, Illinois 60610

photo number 6

This view of the starboard side dining room on the upper deck, looking toward the stern, shows furniture that survives from the 1940's.



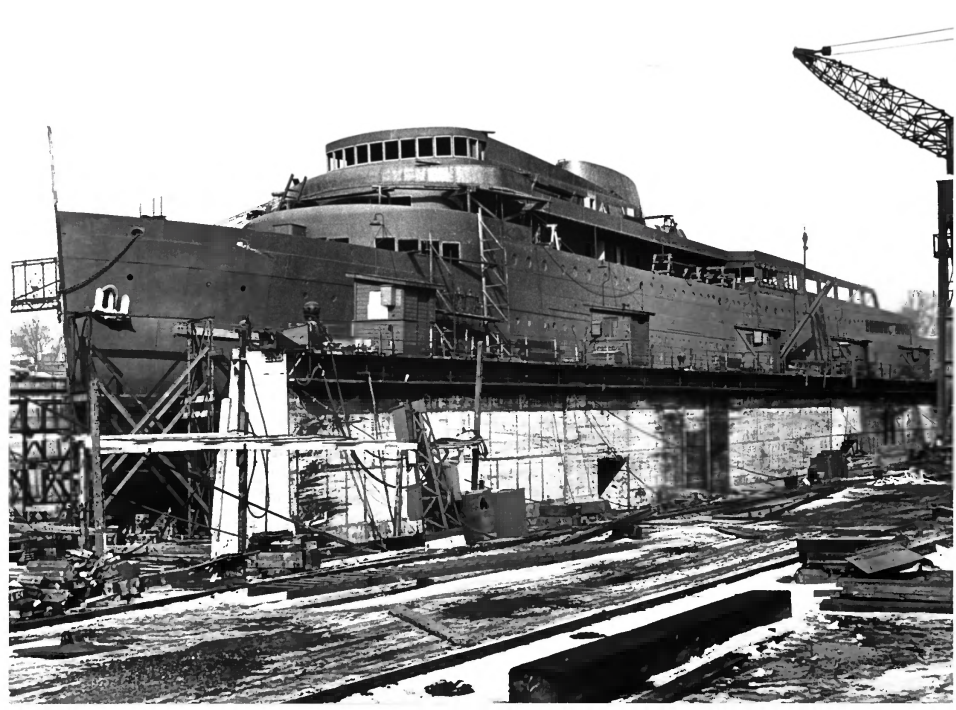
S/S CLIPPER
Chicago, Illinois

November 14, 1982

Harry Weese and Associates
10 West Hubbard
Chicago, Illinois 60610

photo number 7

At one time, automobiles were carried on the main deck. This photo is of the port side looking toward the stern.



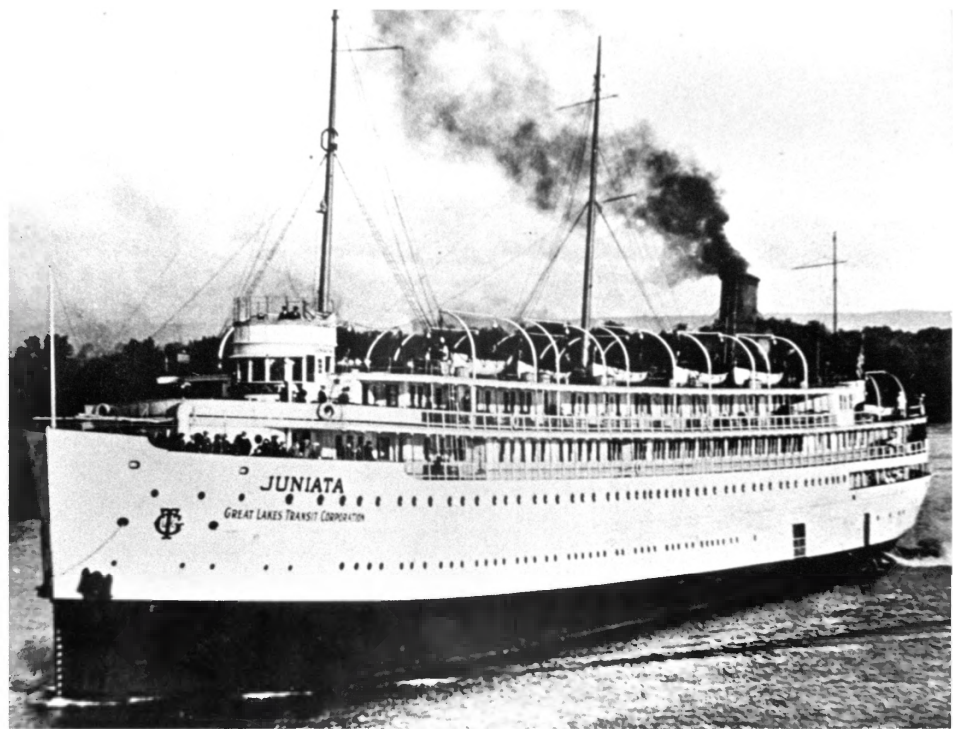
S/S Clipper
Chicago, Illinois

April, 1941

Wisconsin & Michigan
Steamship Company

photo number 8

The JUANITA at Manitowoc, Wisconsin being
rebuilt as the MILWAUKEE CLIPPER.



JUNIATA

GREAT LAKES TRANSIT CORPORATION

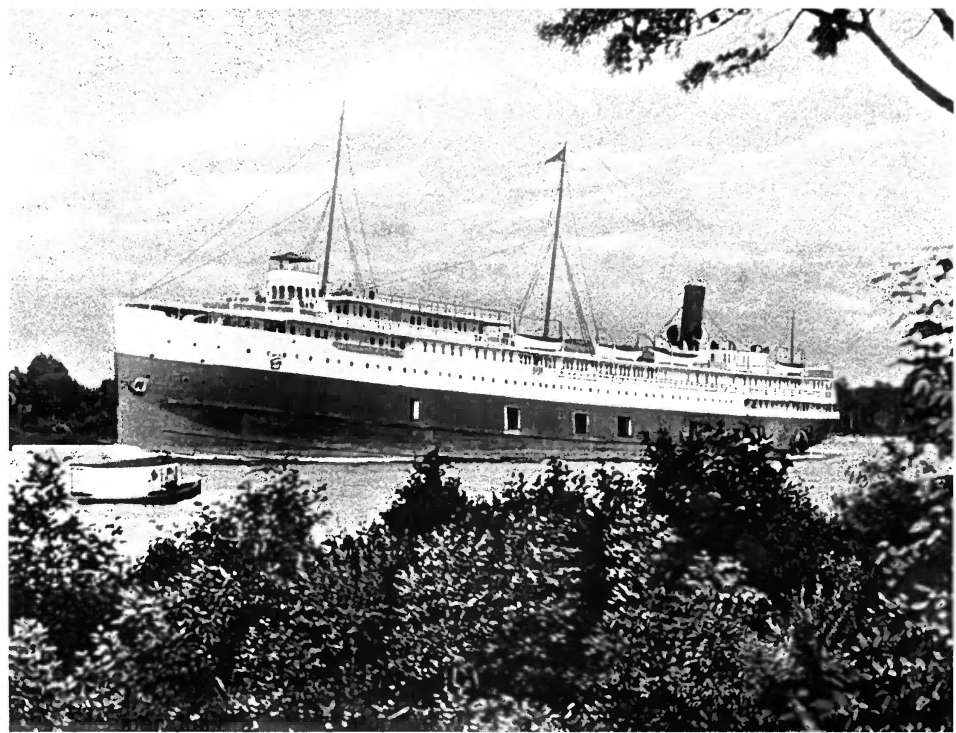
S/S Clipper
Chicago, Illinois

1924

Charles H. Truscott Collection
P. O. Box 478
Mackinac Island, Michigan 49757

photo number 9

The JUNIATA after her first alteration.



S/S Clipper
Chicago, Illinois

1906 (?)

Charles H. Truscott Collection
P. O. Box 478
Mackinac Island, Michigan 49757

photo number 10

The JUNIATA in Hay Lake cut appeared in this lithograph on a penny post card by the Hugh C. Leighton Company of Portland, Maine.



GREAT LAKES TRANSIT CORPORATION

THE GREAT LAKES TRANSIT CORPORATION

begs to announce that it has taken over and will operate the magnificent and modern passenger steamships

Octorara, Juniata and Tionesta

formerly owned and operated by the

Erie & Western Transportation Company, Anchor Line

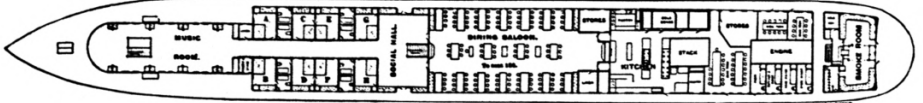
We desire to express our appreciation of the generous patronage accorded the Anchor Line for so many years and to bespeak for the new Company a continuance of the same, and at the same time to assure our patrons that the same high standard that has characterized the service of the Anchor Line will be maintained under the new ownership.

The Steamships Tionesta, Juniata and Octorara are exactly the same size, built from the same model and furnished and equipped alike.

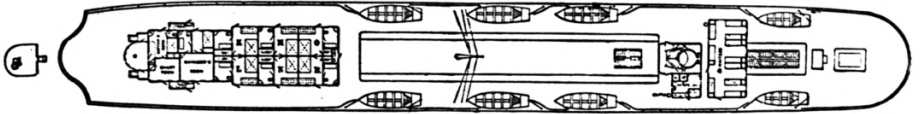
Cabin diagrams of Great Lakes Transit Corporation Passenger Steamers, Octorara, Juniata and Tionesta



BERTH DECK.



SALON DECK.



BOAT DECK.

S/S Clipper
Chicago, Illinois

About 1916

Charles H. Truscott Collection
P. O. Box 478
Mackinac Island, Michigan 49757

photo number 11

When the Erie & Western Transportation Company, a subsidiary of the Pennsylvania Railroad, was forced by the Federal government to divest itself of its steamship interests in 1916, the Great Lakes Transit Corporation bought the Anchor Line i.e., the JUNIATA and her two sister ships.

The company then announced their intentions in this advertisement to continue the high standards of service and printed diagrams of the ships comodious internal arrangements.