



F. E. MILLER CO.
SALES & SERVICE SINCE 1926

DOWNTOWN

M-163

NOV 01 1979
205 N Queen St

by Tony Wrenn

August 1978

Berkeley Co. Mult. Res.
W.D.

065B

DEC 10 1980



DOWNTOWN

NOV 01 1979

M-163

201 N Queen St

by Tony Wrenn

August 1978

Berkeley Co. Mult. Res.
WC

065B

DEC 10 1980

201 N. Queen



1902

ER CO.
SINCE 1926

STATE STORE

NO LEFT TURN

DOWNTOWN

M-163

NOV 01 1979

201 N Queen St

by Tony Wrenn

August 1978

Berkeley Co. 300 plt. Res.
WJ

0658

DEC 10 1980

201 N. Wrenn



DOWNTOWN NOV 01 1979 M-163

200 block of N Queen St
(looking north from Martin St inter-
section-eastern side)

by Don C Wood

June 1979

8605

Berkley Co. Mult. Res.
WU

DEC 10 1980



DOWNTOWN

NOV 01 1979

M-163

200 block of N Queen St
(looking north from the Martin St
intersection-western side)

by Don C Wood

June 1979

8605

Berkley Co. Mult. Res.
WV

DEC 10 1980



LEFT
TURN

diamond's

SUMMER
CLEARANCE

DOWNTOWN

NOV 01 1979

M-163

151-155 N Queen St

by Tony Wrenn

August 1978

Berkeley Co. Mult. Res.
WJ

0658

DEC 10 1980

155 -
151 -
Wrenn
David Allen's
Diamonds



DOWNTOWN

M-163

NOV 01 1979

150-152 N Queen St
(Martin St facade)

by Tony Wrenn

August 1978

Berkeley Co. Mult. Res.
WD

068B

DEC 10 1980

101 W. Martin
St. John's
(Martin St.)



DOWNTOWN

NOV 01 1979

M-163

148 N. Queen St

by Tony Wrenn

August 1978

Berkley Co. Mult. Res.
WJ

DEC 10 1980

0688



DOWN TOWN MARTINSBURG
HISTORIC DISTRICT
135, 137, 139 N. QUEEN ST

M 163

Do N. WOOD

NOV 1980



WESTVIRGINIAN
RESTAURANT

TILE LINOLEUM
The FLOOR SHOP

Armstrong
floor fashion
carpet

CARRIET
CLEANING TILE

4330

DOWN TOWN MARTINSBURG
HISTORIC DISTRICT
127, 123, 121 N. QUEEN ST.

H M 163

DON WOOD NOV 1980



DOWNTOWN

M-163

NOV 01 1979

109 N Queen St

by Tony Wrenn

August 1978

*Bentley Co. Milt. Res.
W.D.*

1678



DOWNTOWN

NOV 01 1979 63

109 N Queen St

by Tony Wrenn

August 1978

DEC 10 1980

Berkeley Co. Mult. Co.
WV

0658



DOWNTOWN

NOV 01 1979

M-163

105 N Queen St

by Tony Wrenn

August 1978

*Bentley Co. Mult. Pla.
WV*

DEC 10 1980

167B



DOWNTOWN

M-163

NOV 01 1979
105 N Queen St

by Tony Wrenn

August 1978

Blue white grill and light

Dentley Co. - M. J. H. Co.

001 0 1330

06590



DOWNTOWN

NOV 01 1979

M-163

100 block of N Queen St
(looking north from Burke Street
intersection-eastern side)

by Don C Wood

June 1979

DEC 10 1980

8605

Berkely Co. Mult. Res.
WV



DÉCOR
INC

Argenbright's, Inc
QUALITY FOOTWEAR

WDZ-DTC
BUSRAJECH

WRIERS

4328

DOWN TOWN MARTINSBURG
HISTORIC DISTRICT
M163 100 N QUEEN ST
NOV 1980 DON WOOD



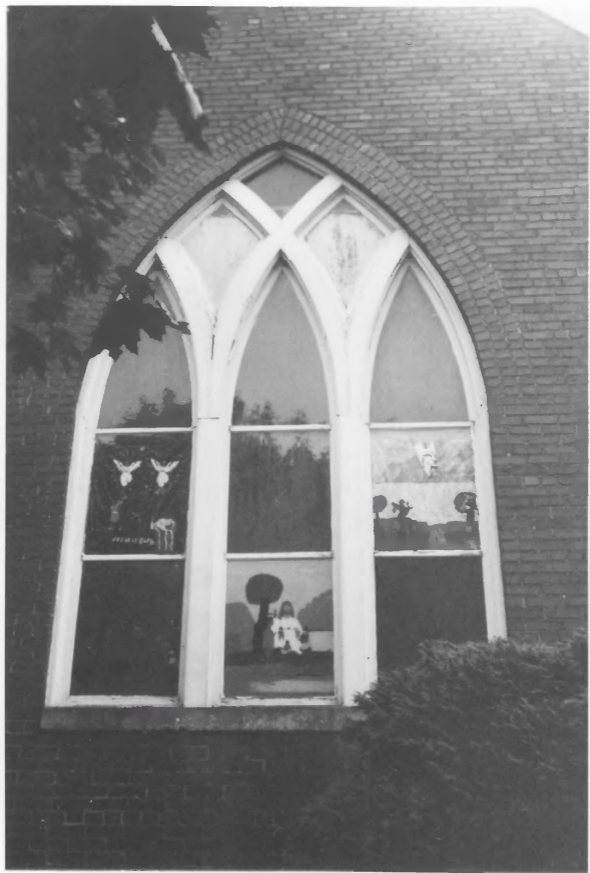
3578

Downtown Mortensby 19163

Intuition

People's Bank

corner of main and Burke
Don't see good news 1980



DOWNTOWN

M-163

NOV 01 1979

615 W Martin St

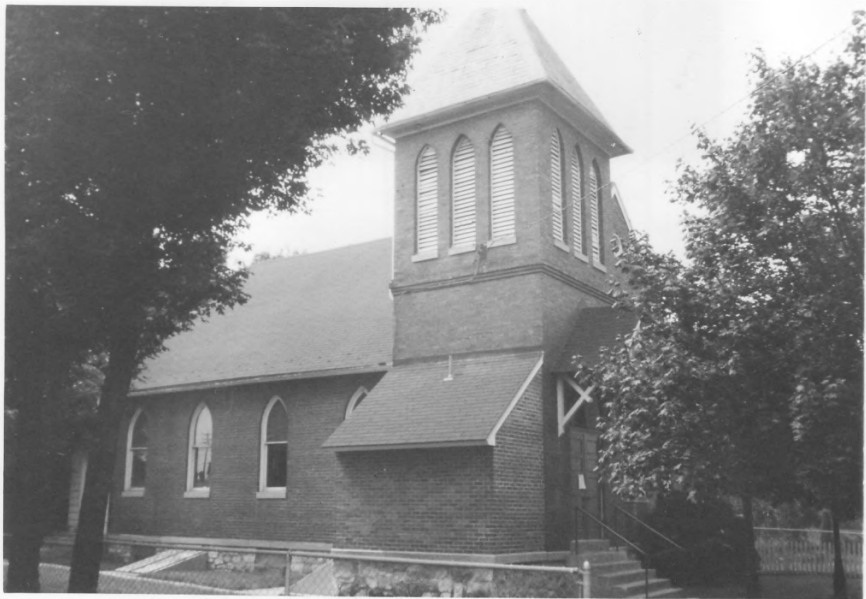
by Tony Wrenn

Aug 1978

DEC 10 1980

Berkeley Co. Mult. Res.
WJ

8040



DOWNTOWN

M-163

NOV 01 1979

615 W Martin St.

by Tony Wrenn

Aug 1978

DEC 10 1981

615 W Martin

Berkeley Co. Mult. Res.
WU

804B



DOWNTOWN

NOV 01 1979

M-163

DEC 10 1980

524 W Martin St (right)

by Tony Wrenn

Aug 1978

0211
7728

Berkeley Co. Mult. Res.
WU

*Building on right
524 W. Martin*

THIS PAPER
MANUFACTURED
BY MODAK

THIS PAPER
MANUFACTURED
BY MODAK



DOWNTOWN

M-163

NOV 01 1979
515 W Martin St

by Tony Wrenn

Aug 1978

DEC 10 1980

515 ?

7728

Berkeley Co. Mult. Res.
WV

Martin



DOWNTOWN

NOV 01 1979

M-163

430-430 $\frac{1}{2}$ -432 W Martin St

by Tony W^Renn

Aug 1978

DEC 10 1980

0211

Berkeley Co. Mult. Res. Area
WJ

430 1/2 W Martin



DOWNTOWN

NOV 01 1979

M-163

400-402 W Martin St

by Tony Wrenn

Aug 1978

DEC 10 1980

Berkeley Co. Mult. Res.
WV

7728

400-402
W. Martin



Downtown

NOV 01 1979

M-163

324 W Martin St

DEC 10 1980

by Tony Wrenn

Aug 1978

7720

Berkeley Co. Mgmt. Res.
WV

324 W. Martin



DOWNTOWN

NOV 01 1979

M-163

DEC 10 1980

305 W Martin St

by Tony Wrenn

Aug 1978

7728

Berkeley Co. Mult. Res. Area

305 W. Martin



DOWNTOWN

M-163

110 N Queen St

6/6/10 AON

by Tony Wrenn

August 1978

Bertaleny Co. Mult. Res.
W.V.

DEC 10 1980

065B

Comments
110 N. Queen



DOWNTOWN

M-163

NOV 01 1979

DEC 10 1980

129 E John St

by Tony Wrenn

Aug 1978

Berkeley Co. Mult. Res. Area/WV

5308

129 E. John



DOWNTOWN

M-163

NOV 01 1979
109 W John St

by Tony Wrenn Aug 1978

DEC 10 1980

Berkeley Co. Multiple Res. Area/WV

7770

109 W John St



DOWNTOWN

NOV 01 1979

M-163

201 E John St

DEC 10 1980

by Tony Wrenn

Aug 1978

Berkeley Co. Mult. Res. ARea/WV

5308



4334

DOWN TOWN MARTINSBURG
HISTORIC DISTRICT.

CORNER JOHN & RALEIGH

M 163 NOV. 1980 DON WOOD



DOWNTOWN

NOV 01 1979 M-163

204 W John St

by Tony Wrenn

Aug 1978

Berkeley Co. Multiple Res. Area/WV

777B

DEC 10 1980



DOWNTOWN

NOV 01 1979

M-163

211 W John St

DEC 10 1980

by Tony Wrenn

Aug 1978

Berkeley Co. Mult. Res. Area/WV

777B

211 W. John



DOWNTOWN

M-163

NOV 01 1979

313 W John St

DEC 10 1980

by Tony Wrenn

Aug 1978

Berkeley Co. Mult. Res. Area/WV

760B

313 W. John



DOWNTOWN

M-163

NOV 01 1979
324 W John St

DEC 10 1980

by Tony Wrenn

Aug 1978

Berkeley Co. Mult. Res. Area/WV

7770

324 W. John



DOWNTOWN

M-163

NOV 01 1979

411 W John St

DEC 10 1980

by Tony Wrenn

Aug 1978

Berkeley Co. Mult. Res. Area/WV

7778

411 W. John St.



DOWNTOWN

M-163

NOV 0 1979

423 W John St DEC 10 1980

by Tony Wrenn

Aug 1978

Berkeley Co. Mult. Res. Area/WV

7770

423 W. John



DOWNTOWN

M-163

NOV 01 1979

506 W John St

by Tony Wrenn

Aug 1978

DEC 10 1980

Berkeley Co. Mult. Res. Area/WV

7770

506 W. John



DOWNTOWN

M-163

NOV 01 1979

DEC 10 1980

509 W John St

by Tony Wrenn

Aug 1978

Berkeley Co. Mult. Res. Area/WV

777B

509 W. John



DOWNTOWN

M-163

NOV 01 1979

DEC 10 1980

515 W John St (brick)

by Tony Wrenn

Aug 1978

Berkeley Co. Mult. Res. Area/WV

7770

5/5-20 John



DOWNTOWN

M-163

NOV 01 1979

516 W John St

DEC 10 1980

by Tony Wrenn

Aug 1978

Berkeley Co. Multiple Res. Area/WV

7770

516 W John



DOWNTOWN

M-163

533-535-537 W John St

NOV 01 1979

by Tony Wrenn

Aug 1978

DEC 10 1980

Berkeley Co. Mult. Res. Area/WV

7778

533-535-537

W. John



DOWNTOWN

M-163

NOV 01 1979

120 E King St

DEC 10 1980

by Tony Wrenn

August 1978

Berkeley Co. Mult. Res. Area/WV

5308

120 E King



DOWNTOWN

NOV 01 1979

M-163

200 E King St (four story)

208 E King St (three story)

DEC 10 1980

by Tony Wrenn

August 1978

Berkeley Co. Mult. Res. Area/WV

5308



DOWNTOWN

NOV 01 1979 M-163

210-212 E King St

by Tony Wrenn

August 1978

530B

Berkeley Co. Mult. Res. Area/WV

DEC 10 1980



DOWNTOWN

M-163

DEC 10 1980

NOV 01 1979
214 E King St

by Tony Wrenn

August 1978

Berkeley Co. Mult. Res. Area/WV

805



DOWNTOWN

M-163

NOV 01 1979
219 E King St

by Tony Wrenn

August 1978

5308

Berkeley Co. Mult. Res. Area/WV

DEC 10 1980

PER
TURED
DAX

THIS PAPER
MANUFACTURED
BY KODAK

THIS PAPER
MANUFACTURED
BY KODAK

THIS PA
MANUFAC
BY K

PER
D

PER
CO



4148

M163 Bountown
Federal Building
W. Kinge Maple St
Don Wood Nov 1980



4148

M-163 downtown
Lebrauf corner
W. King st N. Queen st
Nov 1980 Leon Wood



3578

Downtown Anstensen M163
Intuition
City Bank 100 Block West
King St. On Wood Nov 1990



DOWNTOWN NOV 01 1979 M-163
100 block of W King St
(looking west from the Queen St
intersection-southern side)
by Don C Wood June 1979

8605

Berkeley Co. Mult. Res. Area/WV

DEC 10 1980



DOWNTOWN

M-163

NOV 01 1979

150-152 N Queen St

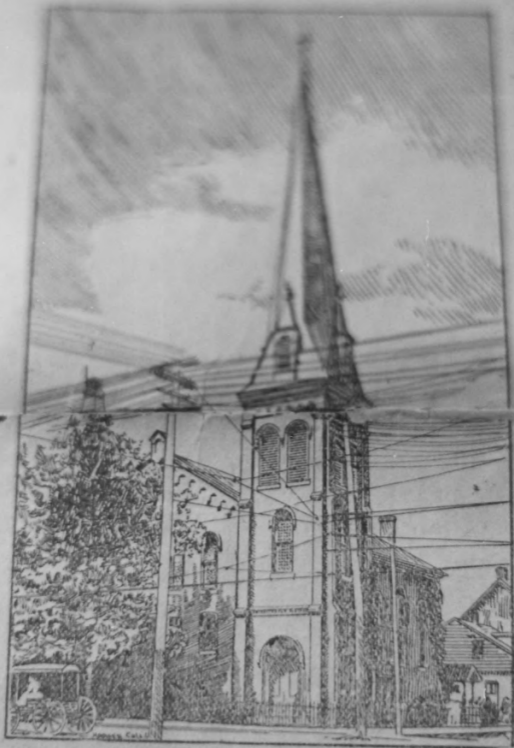
by Tony Wrenn

August 1978

*Berkeley Co. Mult. Res
WV*

DEC 10 1980

0688



ST. JOHN'S LUTHERAN CHURCH.

[From a photograph by C. C. Bennet, Martinsburg.]

DOWNTOWN

M-163

NOV 01 1979
150-152 N Queen St

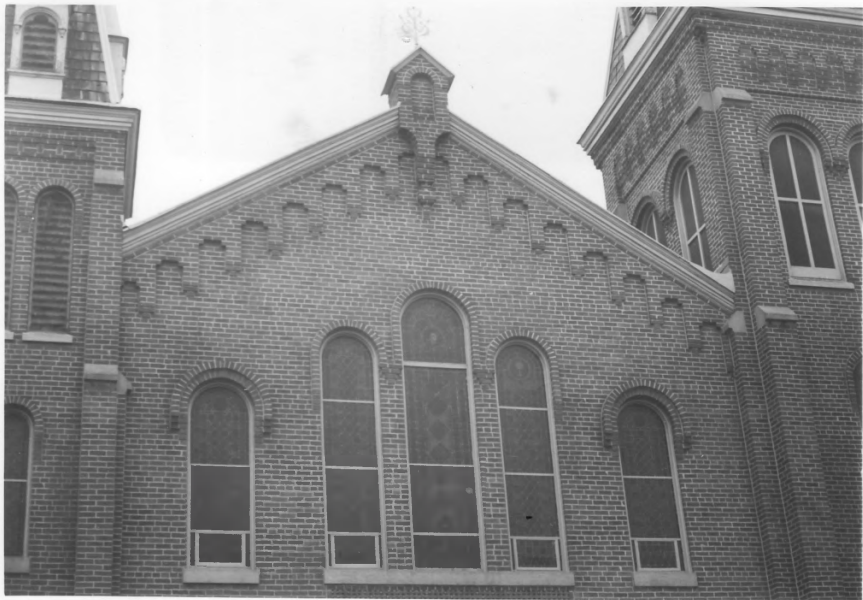
by Tony Wrenn

August 1978

Berkley Co. Mult. Rec.
WJ

749B

DEC 10 1990



DOWNTOWN

M-163

NOV 01 1979
150-152 N Queen St
(Queen St Facade)

by Tony Wrenn

August 1978

Berkley Co. Mult. Res.
WJ

068B

DEC 10 1979

101 W. Martin
St. John's
(Queen St. Facade)



DOWNTOWN

NOV 01 1979 M-163

100 N Queen St

by Tony Wrenn

August 1978

DEC 10 1980

Ernest's Windows

*Berkeley Co. Mult, Res.
WD*

1670



NO. 1, CITY MARKET.—NO. 2, CITY HALL.

[From a photograph by C. C. Bennet, Martinsburg.]

DOWNTOWN

NOV 01 1979

M-163

100 N Queen St

DEC 10 1980

by Tony Wrenn

August 1978

005L

Berkely Co. Mult. Res / W /



DOWNTOWN NOV 01 1979 M-163

100 block of N Queen St
(looking north from the Burke St
intersection-western side)

by Don C Wood June 1979

DEC 10 1980

0605

Berkley Co. Mult. Res. / W V



DOWNTOWN

NOV 01 1979

M-163

218-220-222 W King St

by Tony Wrenn

August 1978

Berkeley Co. Multiple Res. Area/WV

DEC 10 1980

218-220-222

W. King



DOWNTOWN

M-163

NOV 01 1979

125 W Burke St

DEC 10 1980

by Tony Wrenn

Aug 1978

DEC 10 1980

Berkeley Co. Mult. Res. Area

WV

7768

210



DOWNTOWN

NOV 01 1979
210 W Race St

M-163

by Tony Wrenn

August 1978

Berkeley Co. Mult. Res. Area

WD

0656

210 W. RACE



DOWNTOWN

M-163

NOV 01 1979

210 W Race St

DEC 10 1980

by Tony Wrenn

August 1978

Berkley Co. Mult. Res. Area

WV

9590



DOWNTOWN

M-163

NOV 01 1979

DEC 10 1980

210 W Race St

by Tony Wrenn

August 1978

Berkeley Co. Mult. Res. Area
WU

959B



DOWNTOWN NOV 01 1979

M-163

127 W Race St

DEC 10 1980

by Tony Wrenn

August 1978

Berkeley Co. Mult. Res. Area
W O

9598



8222

DOWNTOWN MARTINSBURG
HISTORIC DISTRICT
125-127 W RACE ST

M 163 NOV 1980 DON WOOD



DOWNTOWN

M-163

NOV 01 1979

136-138 E Race St

DEC 10 1980

by Tony Wrenn

August 1978

0808

Berkeley Co. Multiple Res. Area
WU



DOWNTOWN

M-163

NOV 01 1979

126 E Race St

by Tony Wrenn

August 1978

BOOK

Berkley Co. Mill. Exp. Area
WLD

DEC 10 1980

126 E. RACE



DOWNTOWN NOV 01 1979

M-163

404-406-408 N Queen Street

by Tony Wrenn

August 1978

8808

DEC 10 1980

Berkeley Co. Mult. Res.
WV

THIS PAPER MANUFACTURED BY KODAK



DOWNTOWN

DEC 10 1980

M-163

NOV 01 1979

404-406-408 S Queen St

by Tony Wrenn

August 1978

8808

Berkley Co. Mult. Res.

WV

404-406-08

N. Wrenn



DOWNTOWN

M-163

NOV 01 1979

401-403 S Queen St

DEC 10 1980

by Tony Wrenn

August 1978

8808

Berkley Co. Mult. Res.
WV



DOWNTOWN

NOV 01 1979

M-163

335 S Queen St

DEC 10 1980

by Tony Wrenn

August 1978

Berkeley Co. Mult. Res. Area
WJ

7808



DOWNTOWN NOV 01 1979

M-163

DEC 10 1980

331 S. Queen St (with shutters)

by Tony Wrenn

August 1978

Berkeley Co. Mult. Res. Area
WU

780B

331 S. Queen



DOWNTOWN NOV 01 1979 M-163

242-244-246 S Queen St 79

by Tony Wrenn

August 1978

Berkley Co. Mult. Res.
WU

0680

DEC 10 1980

242-244-246
M. Wrenn



DOWNTOWN

NOV 01 1979

M-163

134 S Queen St

by Tony Wrenn

August 1978

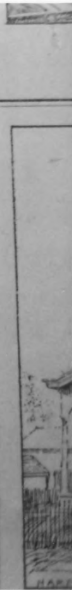
Berkeley Co. Mult. Res. Area/WV

7770

DEC 10 1980

134 S. Queen

nd
Developing



DOWNTOWN NOV 01 1979

M-163

139-141-143 S Queen St (1892)

by Tony Wrenn

August 1978

0647

Berkeley Co.

Malt

Doc

Area/WV

DEC 10 1980



ARMED FORCES
RECRUITING CENTER
ALL BRANCHES OPEN

LANDMARK FINANCE
PHARMACY
LOANS

Broadstair Opticians

DOWNTOWN

M-163

6/6/1 TO AOM

139-141-143 S Queen St

Tony Wrenn

August 1978

Berkeley Co. Mult. Res. Area / WV

7630

DEC 10 1980

J. Wrenn

139-141-143



DOWNTOWN

M-163

NOV 01 1979
145 S Queen Street

by Tony Wrenn

August 1978

Berkley Co. Mult. Res. Area

WJ

7630

DEC 10 1980



DOWNTOWN

M-163

200 block of S Queen St
(looking south from King St inter-
section; west side. Library in
the foreground.)

by Don C Wood

June 1979

NOV 01 1979

Beckley Co. Mult. Pos. WU

DEC 1 0 1980



DOWNTOWN

NOV 01 1979

M-163

208 S Queen Street

by Tony Wrenn

August 1978

Berkeley Co. Mult. Res.
Area WU

7808

DEC 10 1980

208 S. Queen
Berkeley Bldg



DOWNTOWN

M-163

NOV 01 1979

125-127-129 S Queen St

by Tony Wrenn

August 1978

Berkeley Co. Mult. Res. Area/WV

7638

DEC 10 1980



DOWNTOWN

M-163

NOV 01 1979

124 S Queen St

by Tony Wrenn

August 1978

DEC 10 1980

Berkley Co. - Mult. Res.
WV

7778



DOWNTOWN

NOV 01 1979

M-163

DEC 10 1980

212. (right)-214 W Burke St.

by Tony Wrenn

Aug 1978

Berkeley Co. Mult. Res. Area
WV

7768

W. Burke
212 (Right) + 214



DEC 10 1978

DOWNTOWN

NOV 01 1979

M-163

213 W Burke St

by Tony Wrenn

Aug 1978

5980

Berkeley Co. Mult. Res. Area
WJ

THIS PAPER MANUFACTURED BY KODAK



DOWNTOWN

NOV 01 1979 M-163

224-226 W King St

by Tony Wrenn

August 1978

503B

Berkeley Co. Mult. Res. Area/FWV

DEC 10 1980

THIS PAPER
MANUFACTURED
BY KODAK

THIS PAPER
MANUFACTURED
BY KODAK

THIS PAPER
MANUFACTURED
BY KODAK

THIS PAPER
MANUFACTURED
BY KODAK

THIS PAPER
MANUFACTURED
BY KODAK

THIS PAPER
MANUFACTURED
BY KODAK



DOWNTOWN

M-163

NOV 01 1979
125-127-129 S. Queen St

(five-bay brick structure)

131 S Queen St (columned stone)
by Tony Wrenn August 1978

7630

DEC 10 1980

Berkeley Co. Mult. Res. Area/ WV

125-127-129 S. Queen



DOWNTOWN NOV 01 1979 M-163

219 S Queen St

by Tony Wrenn August 1978

Berkeley co. Mult. Res.
Wrenn WJ

DEC 10 1980

7638



PRESBYTERIAN CHURCH, SOUTH QUEEN STREET.

DOWNTOWN NOV 01 1979

M-163

220 S Queen St

by Tony Wrenn

August 1978

0354

Berkeley ~~CA~~ Mult Res. WD

DEC 10 1980



DOWNTOWN

NOV 01 1979

M-163

220 S Queen St

by Tony Wrenn

August 1978

Berkeley Co. Mult.
Res Area WU

777B

DEC 10 1980



ONE OF MARTINSBURG'S MANY HANDSOME RESIDENCES—HOME OF CHARLES G. SMITH.

242

S

DOWNTOWN

NOV 01 1979

M-163

242 S Queen St

DEC 10 1980

by Tony Wrenn

August 1978

8352

Berkeley Co. Mult. Res. Area
WU



DOWNTOWN

NOV 01 1979

M-163

242 S Queen St

DEC 10 1980

by Tony Wrenn

August 1978

Berkeley Co. Mult. Res. Area
WU

7808

242 S. Queen



DOWNTOWN NOV 01 1979

M-163

126 E Race St

DEC 10 1980

by Tony Wrenn

August 1978

0808

Berkeley Co. Multis Res. Area
WU



GOODWILL
INDUSTRIES STORE

GENERAL
STORE
APPLIANCES • ANTIQUES • TOYS • MISC.

GENERAL STORE

GENERAL STORE

DOWNTOWN

NOV 01 1979

M-163

225-227-229-231 N Queen Street

by Tony Wrenn

August 1978

229

227

225

Berkaley Co. Mult. Res.

WD

065B

DEC 10 1980



DOWNTOWN

M-163

NOV 01 1979

225-227-229-231 N Queen St

by Tony Wrenn

August 1978

Bentley Co. Mult. Rls.

WJ

065B

DEC 10 1980



DOWNTOWN

NOV 01 1979

M-163

DEC 10 1980

504-506 W Burke St

by Tony Wrenn Aug 1978

0185

Berkeley Co. Mult. Res. Area/WV

504
506
W Burke



DOWNTOWN

M-163

NOV 01 1979

DEC 10 1980

417 W Burke St

by Tony Wrenn

Aug 1978

0185

Berkeley Co. Mult. Res. Area/WV

417 W. Burke



DOWNTOWN

M-163

NOV 01 1979

401 W. Burke St

DEC 10 1980

by Tony Wrenn

Aug 1978

0185

Berkeley Co. Multiple Res. Area/WV

401 W. Burke St



DOWNTOWN

M-163

NOV 01 1979

400 W Burke St

DEC 10 1980

by Tony Wrenn

Aug 1978

0185

Berkeley Co. Multiple Res. Area/WV

400 W. Burke



DOWNTOWN

M-163

NOV 01 1979

320 W Burke St

by Tony Wrenn

Aug 1978

NOTE: Wooden porch has pierced
pendants and brackets.

DEC 10 1980

Berkeley Co. Mult. Res. Area/WV



DOWNTOWN

NOV 01 1979

M-163

310 W Burke St

by Tony Wrenn

Aug 1978

Berkeley Co. Mult. Res. Area 0:85
WW

"Phillips House"
310 W. Burke

DEC 10 1980



DOWNTOWN

NOV 01 1979

M-163

310 W Burke St (west Side)

BY Tony Wrenn

Aug 1978

NOTE: Western side-stained oval stair window with four key-stones; oriel window with demi-octagonal bell cast roof and support. To rear; round bay window with buldging balustrade/conical hood in cross gable. Metal cresting course runs along roof peak.

Berkley Co. Mult. Res. Area
WU

DEC 10 1980



DOWNTOWN

M-163

NOV 01 1979

309 W Burke St

by Tony Wrenn

Aug 1978

Berkeley Co. Mult. Res. Area 8 1 8 5
WV

DEC 1 0 1980

309 W Burke St



DOWNTOWN

NOV 01 1979

M-163

302-304-306 W Burke St

by Tony Wrenn

Aug 1978

Berkeley Co. Mult. Plo. Area
WD

DEC 10 1980

7768

302-304-306

Burke



DOWNTOWN

NOV 01 1979

M-163

220-220 $\frac{1}{2}$ W Burke St

DEC 10 1980

by Tony Wrenn

Aug 1978

Berkeley Co. Mult. Res. Area/w/d

5468



DOWNTOWN

NOV 01 1979

M-163

DEC 10 1980

216 & 218 (white) W Burke St

by Tony Wrenn

Aug 1978

Berkeley Co. Mult. Res Area/WU

7768

218 (white) W. Burke
216 W. Burke



DOWNTOWN

M-163

NOV 01 1979

211-211 $\frac{1}{2}$ W Burke St

DEC 10 1980

by Tony Wrenn

Aug 1978

7768

211-211 $\frac{1}{2}$ W Burke St



DOWNTOWN

NOV 01 1979

M-163

DEC 1 0 1980

200 W Burke St

by Tony Wrenn

Aug 1978

Berkeley Co. Mult. Res. Area
WU

776B

200 W. Burke



DOWNTOWN

M-163

NOV 01 1979

DEC 10 1990

127-129 W Burke St

by Tony Wrenn

Aug 1978

Berkeley Co. Mult. Res. Area
WV

7768

127-129 W. Burke



DOWNTOWN

NOV 01 1979

M-163

300 W Martin St

DEC 10 1980

by Tony Wrenn

Aug 1978

7720

Berkley Co. Mult. Res.
WV

300 W. Martin



DOWNTOWN

NOV 01 1979

M-163

204-218 W Martin St

by Tony Wrenn

Aug 1978

DEC 10 1980

Berkeley Co. Mult. Res.

WV

763B



DOWNTOWN

NOV 01 1979

M-163

126 W Martin St

by Tony WRenn

Aug 1978

DEC 10 1980

Berkeley Co. Mill Res.
WV

7630

126 W Martin St
126 W Martin St
126 W Martin St



DOWNTOWN

NOV 01 1979

M-163

125 W Martin St

DEC 10 1980

by Tony Wrenn

Aug 1978

Berkeley Co. Mult. Res
NW

7630

125 W. Martin



DOWNTOWN

NOV 01 1979

M-163

120-122 W Martin St

by Tony Wrenn

Aug 1978

DEC 10 1980

Berkley Co. mult. Res.
WJ

7630

120-122 W. Martin



DOWNTOWN

NOV 01 1979

M-163

119-121 W Martin St

DEC 10 1980

by Tony Wrenn

Aug 1978

*Berkeley co. Mult fcs -
WJ*

7630

151 W. Martin



DOWNTOWN

NOV 01 1979

M-163

118 W Martin St

DEC 10 1980

by Tony Wrenn

Aug 1978

Berkeley Co. Mult. Res.
WW

7630

118 W. Martin



DOWNTOWN

NOV 01 1979

M-163

115-117 W Martin St

by Tony Wrenn

Aug 1978

Berkeley Co. Mult. Res. Area/WV

DEC 1 0 1980

7630

113 W. Martin
Bernstein



DOWNTOWN

M-163

NOV 01 1979

100 W Martin St

by Tony Wrenn

Aug 1978

Berkeley Co. Mult. Res. Area/WV

DEC 10 1980

7630

100 W Martin



DOWNTOWN

NOV 01 1979

M-163

220-222-224-226 E Martin St

by Tony Wrenn

Aug 1978

DEC 10 1980

BERKELEY CO. MULTIPLE RESOURCE AREA/WV

7630

220-224-
1868 Hotel
226 E Martin



DOWNTOWN

NOV 01 1979 M-163

DEC 10 1980

100 block of E Burke St
(looking east from Queen St inter-
section-northern side)

NOTE: Shows sites of three
demolished buildings
adjacent to church.
113, 125 & 127 E Burke St

by Don C Wood

June 1979

Bertaly Co - Mult. Res. / W.D.



0016

M-163 downtown
People's drop store
W. Burke & N. Davenport St
Nov 1980 Don Wood



Berkeley Co. Multiple Resource Area WV

DEC 10 1980

Iron Power poles
on Burke Street
Emory Kemp
1978

NOV 01 1980



DOWNTOWN

NOV 01 1979

M-163

S Church St Cemetery

by Tony Wrenn

Aug 1978

Berkeley Co. Multiple REs. Area/WV

9570

DEC 10 1980



VIEW OF MAIN STREET, LOOKING NORTH FROM C. H. WOLFES' BUILDING.

[From a photograph by C. C. Bennet, Martinsburg.]

225-

DOWNTOWN NOV 01 1979 M-163

Wren

225-227-229-231 N Queen St
(center bldg)

892

1892

by Tony Wrenn

August 1978

Berkley Co. Malt, Res.

8644

WJ

DEC 10 1980



ED LIGHTS
Discount
STORE

1001 NEW YORK STREET

FRANK
EDG
L

DOWNTOWN

M-163

NOV 01 1979

214-216 N Queen St

by Tony Wrenn

August 1978

Berkeley Co. Mult. Res.

WJ

0688

DEC 10 1961



4378

DOWN TOWN MARTINSBURG
HISTORIC DISTRICT
209 N Queen St

M 163 NOV 1980 DON WOOD



3578

Downtown Webster M163
Submission
Old National Bank on
the Square
Don Woodgrove 1980

**DISCOUNT
JEANS**



DOWNTOWN NOV 01 1979 M-163

242-244-246 N Queen St

by Tony Wrenn

August 1978

Berkley Co. Mkt. Co.
WV

065B

DEC 10 1980



DOWNTOWN

NOV 01 1979 M-163

235 N Queen St

by Tony Wrenn

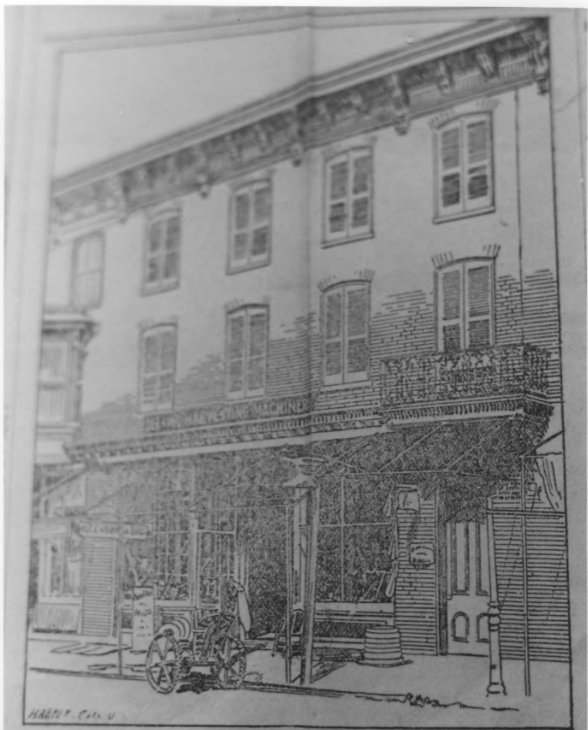
August 1978

Bentley co. Mult. Res.

WV

0650

DEC 10 1980



BUSINESS PLACE OF H. T. CUSHWA & BRO.

[From a Photograph by C. C. Bennett, Martinsburg.]

DOWNTOWN

NOV 01 1979

M-163

235 N Queen St

by Tony Wrenn

August 1978

Berkley Co. Mkt. Res.

WV

DEC 10 1980

7540



DOWNTOWN NOV 01 1979

M-163

230-232-234 ^N Queen St

by Tony Wrenn

August 1978

Berkeley Co. Mult. Res.

WU

068B

DEC 10 1980

230-232-234

Washington

Queen



DOWNTOWN

NOV 01 1979

M-163

DEC 10 1980

123 W Commerce St

by Tony Wrenn

Aug 1978

8808

Berkeley Co. Multiple Res. Area/WV

123 W. Commerce



DOWNTOWN

NOV 01 1979

M-163

222 N College St

by Tony Wrenn

Aug 1978

BERKELEY CO. MULTIPLE RESOURCE AREA/WV

8596

DEC 10 1980



DOWNTOWN

M-163

NOV 01 1979

117 E Burke St

by Tony Wrenn

Aug 1978

017E

Berkeley Co. Mult. Res. Area/WV

DEC 10 1980



3578

Downtown Washinsh M 163
corner of Rose and north green
of Intuition
Don Wood Nov 1990



3578

Downtown Martineby 11/16/3
Linton
Cot. Allenmore building
corner of Spring and Bush
Oak Wood Nov 1980



PRIVATE
PARKING
ONLY
FINED FOR
TRESPASSING

1

DOWNTOWN

M-163

NOV 01 1979

S Spring St

by Tony Wrenn

Aug 1978

Berkeley Co. Mult. Res. Area/WV

9570

DEC 10 1980



DOWNTOWN

NOV 01 1979

M-163

217 N Spring St

by Tony Wrenn

Aug 1978

BERKELEY CO. MULT. RES. AREA/WV

9578

DEC 1 0 1980



DOWNTOWN

M-163

NOV 01 1979

220-222 N Spring St

by Tony Wrenn

Aug 1978

BERKELEY CO. MULTIPLE RESOURCE AREA

WV

DEC 10 1980

957B



DOWNTOWN

M-163

225-227 N Spring St (brick
on right-nearest)

229-231 N Spring St (other
brick) DEC 10 1980

by Tony Wrenn

Aug 1978

NOV 01 1979

9578

WM



DOWNTOWN

NOV 01 1979

M-163

DEC 10 1980

222 W Burke St

by Tony Wrenn

Aug 1978

Berkeley Co. Mattie's
Reserve Area/wv

7768

222 W. Burke



4198

M-163 downtown
Clark Beattate
W King st & Maple st
Nov 1980 Don Wood



DOWNTOWN

NOV 01 1979

M-163

The Dough-Boy

W W I Memorial on W King St

by Tony Wrenn

August 1978

805B

DEC 10 1980

Berkeley Co. Mult. Res. Area/WV



DOWNTOWN

NOV 01 1979

M-163

209 S Maple Ave

by Tony Wrenn

August 1978

Berkeley Co. Mult. Res.

(WU) Arden

765B



DOWNTOWN NOV 01 1979 M-163

217 N Maple Ave

DEC 10 1980

by Tony Wrenn Aug 1978

Berkeley Co. Mult. Res.

WW

7600

217 N. Maple



DOWNTOWN

M-163

NOV 01 1979

DEC 10 1980

110-112 S Maple Ave

by Tony Wrenn

Aug 1978

Berkeley Co. Multiple Res. Area/WV

7600

110-112 S Maple



DOWNTOWN

M-163

NOV 01 1979

123 S Maple Ave

DEC 10 1980

by Tony Wrenn

Aug 1978

Berkeley Co. Mult. Res.
WV

7668

123 S. Maple



DOWNTOWN

M-163

NOV 01 1979

301 S Maple Ave

DEC 10 1980

by Tony Wrenn

Aug 1978

Berkley Co. Mult. Res.
WV

7608

301 S Maple



DOWNTOWN

NOV 01 1978 M-163

319 S Maple Ave

by Tony Wrenn

Aug 1978

Bentley Co. Mult. Res.
WV

7600



DOWNTOWN

M-163

NOV 01 1979

128 E Martin St

by Tony Wrenn

Aug 1978

DEC 10 1978

Berkley Co. Mult. Res.
WV

7638



DOWNTOWN

NOV 01 1979

M-163

201-03, 207-09,

213 E Martin St

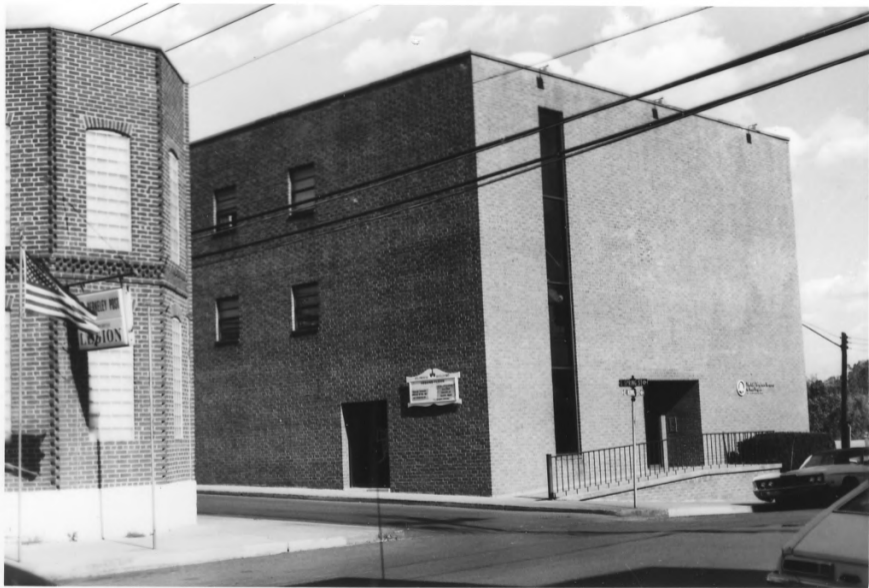
by Tony Wrenn

Aug 1978

Berkeley Co. Mult. Res.
WU

7638

201-03 }
207-09 }
213 E Martin St }
E. Wrenn }
Aug 1978 }



11-103. Downtown
American Legion building
~~Telephone~~ W. King St &
Springs

M-163 Down town
Telephone building corner
W. King & Spring St
700 So Leon Wood



DEC 10 1980

8496

Berkeley Co. Mult. Res. Area/WV

by Tony Wrenn Aug 1978

201 1/2 English St

NOV 01 1979

M-163

DOWNTOWN



DOWNTOWN

NOV 01 1979

M-163

202 English St

by Tony Wrenn

Aug 1978

Berkeley Co. Multiple Resource Area/WV

9640

DEC 10 1980



DOWNTOWN

NOV 01 1979 M-163

203 English St

by Tony Wrenn

Aug 1978

Berkeley Co. Mult. Res. Area/WV

9648

203 ENGLISH ST.

DEC 10 1980



DOWNTOWN

M-163

NOV 01 1979

205 English St

by Tony Wrenn

Aug 1978

Berkeley Co. Mult. Res. Area/WV

9648

DEC 10 1980



DOWNTOWN

NOV 01 1979

M-163

205 English St

by Tony Wrenn

Aug 1978

Berkeley Co. Multiple Res. Area/WV

9648

DEC 10 1980



DOWNTOWN

NOV 01 1979 M-163

100 W King St

by Tony Wrenn

August 1978

DEC 10 1980

Berkeley Co. Mult. Res. Area/ WW

777B

101 W. King



DOWNTOWN

NOV 01 1979

M-163

110-112 S Queen St

by Tony Wrenn

August 1978

DEC 10 1980

Bentley Co. Mult. Res.

WV

777B



DOWNTOWN

M-163

NOV 01 1979

100 W King St

by Tony Wrenn

August 1978

8 E 0 9

Berkeley Co. Mult. Res. Area / WV



DOWNTOWN

NOV 01 1979

M-163

127 W King St

by Tony Wrenn

August 1978

DEC 10 1980

0 0 0 9

Berkeley Co. Mult. Res. Area/WV



DEPARTMENT OF HEALTH
ENVIRONMENTAL HEALTH SERVICE
REGIONAL OFFICE
SECOND FLOOR

DOWNTOWN

M-163

NOV 01 1979

127 W King St

by Tony Wrenn

August 1978

DEC 10 1980

503B

Berkeley Co. Mult. Res. Area/WV

127 W. King



DOWNTOWN

NOV 01 1979

M-163

137-139 W King St

by Tony Wrenn

August 1978

8 3 0 9

Berkeley Co. Mult. Res. Area/WV



DOWNTOWN

M-163

NOV 01 1979

200 block of W King St
(looking west from near College St)

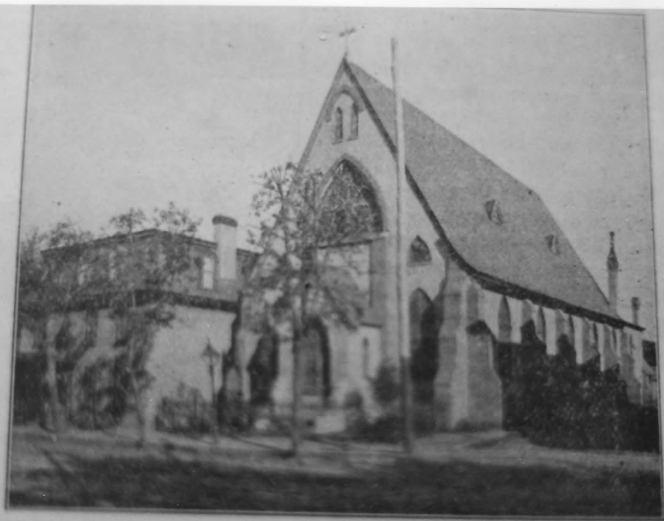
by Tony Wrenn

August 1978

0 0 0 9

Berkeley Co. Mult. Res. Area/WV

DEC 10 1980



TRINITY P. E. CHURCH, WEST KING STREET.

DOWNTOWN

NOV 01 1979

M-163

200 W King St

by Tony Wrenn

August 1978

8 3 5 7

Berkeley Co. Mult. Res. Area/WV

DEC 10 1980



DOWNTOWN

M-163

NOV 01 1979

200 W King St

by Tony Wrenn

August 1978

8 E 0 9

BERKELEY CO. MULTIPLE RES. AREA/WV

DEC 10 1980



DOWNTOWN

NOV 01 1979 M-163

216 W King St

by Tony Wrenn

August 1978

5038

DEC 10 1980

Berkeley Co. Mult. Res. Area/ WV



DOWNTOWN

NOV 01 1979

M-163

300 W. King St

by Tony Wrenn

August 1978

9038

Berkeley Co. Mult. Res. Area/WV

DEC 10 1980

300 W. King

DOWNTOWN

NOV 01 1979

M-163

300 W King St

by Tony Wrenn

August 1978

0352

Berkeley Co. Mult. Res. Area/WV

DEC 10 1980



Professional
Personnel
Agency

The

DOWNTOWN

M-163

NOV 01 1979
301-305 W King St

by Tony Wrenn

August 1978

BERKELEY CO. MULTIPLE RES. AREA/WV

B
O
S
B

DEC 10 1980



DOWNTOWN

NOV 01 1979 M-163

301-305 W King St

by Tony Wrenn

August 1978

0058

Berkeley Co. Mult. RES. Area/ WV

DEC 10 1980



DOWNTOWN

M-163

NOV 01 1979

301-303-305 W King St

by Tony Wrenn

August 1978

8 5 0 8

BERKELEY CO. MULT. RES. AREA/WV

DEC 10 1980

301 thru 305 W King



DOWNTOWN

NOV 01 1979

M-163

410 W King St

by Tony Wrenn

August 1978

DEC 10 1980

8508

Berkeley Co. Mult. Res. Area/WV



DOWNTOWN

NOV 01 1979

M-163

500 W King St

by Tony Wrenn

August 1978

8508

Berkeley Co. Mult. Res. Area/ WV

DEC 10 1980

500 W. King St



DOWNTOWN

NOV 01 1979

M-163

506 W King St

by Tony Wrenn

August 1978

0508

DEC 10 1980

Berkeley Co. Mult. Res. Area/WV

506 W. King



DOWNTOWN

NOV 01 1979

M-163

506 W King St

by Tony Wrenn

August 1978

Berkeley Co. Mult. Res. Area/WV

8508

DEC 10 1980

506 W. King



DOWNTOWN

NOV 01 1979

M-163

506 W King St

by Tony Wrenn

August 1978

DEC 10 1980

305B

Berkeley Co. Multiple Res. Area/WV



10 BARTHOLOMEW
HOME SAFETY CENTER

Beauty Shop

Beauty Shop

DOWNTOWN

NOV 01 1979

M-163

509-519 W King St and
521-523 W King St (last dble)

by Tony Wrenn

August 1978

Berkeley Co. Mult. Res. Area/ WV

8508

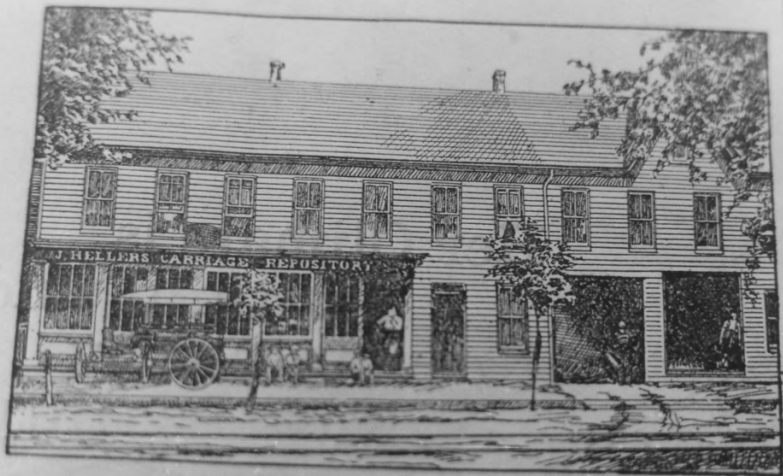
W. King St
509-519-523

W. King St

509-11-13-15-17-19

DEC 10 1980

its center of collection and distribution, | by using a large and profitable busi-
ness. The entire cost of the building.



Business Place of John Heller.

ing
by
ly
wi
ar
m
m
d
p
a
i
n
t

DOWNTOWN

NOV 01 1979

M-163

509-519 W King St.

by Tony Wrenn

August 1978

0152

Berkeley Co. Mult. Res. Area/WV

DEC 10 1980



DOWNTOWN

NOV 01 1979

M-163

512 W King St

by Tony Wrenn

August 1978

DEC 10 1980

8 5 0 8

Berkeley Co. Mult. Res. Area/WV

512 W King



8548

DOWN TOWN MARTINSBURG
HISTORIC DISTRICT
CORNER MAPLE & BURKE

M 163

NOV 1980

DON WOOD



DOWNTOWN

NOV 01 1979 M-163

100 N Maple Ave

by Tony Wrenn

Aug 1978

7
7
2
B

THIS PAPER
MANUFACTURED
BY KODAK

THIS PAPER
MANUFACTURED
BY KODAK

THIS PAPER
MANUFACTURED
BY KODAK

THIS PA
MANUFAC
BY K

IS PAPER
CTURED
AK

IS PAPER
CTURED
AK



DOWNTOWN

NOV 01 1979

M-163

120 N Maple Ave

by Tony Wrenn

Aug 1978

1720

Berkeley Co. Mult. Res. Area/W

DEC 10 1980

120 N. Maple



DOWNTOWN

M-163

NOV 01 1979

121 N Maple Ave

by Tony Wrenn

Aug 1978

Berkeley Co. Mult. Res.
WV

DEC 10 1980

7668

121 N. Maple



DOWNTOWN

M-163

NOV 01 1979

122 N Maple Ave

DEC 10 1980

by Tony Wrenn

Aug 1978

7728

Berkley Co. Mult. Res.
WU

122 N. Maple



DOWNTOWN

M-163

NOV 01 1979

123 N Maple Ave

DEC 10 1980

by Tony Wrenn

Aug 1978

123 N. Maple

Berkley CO. Mult. Res.
WV

7668



DOWNTOWN

NOV 01 1979

M-163

DEC 10 1980

530 W Burke St

by Tony Wrenn

Aug 1978

Berkeley Co. Multiple Res. Area/WV

8048



8 P... NE GROUP
1.95...

**BARGAIN
HOUSE**

PHONE 63-6845

**BARGAIN
HOUSE**

PHONE 263-6845

DOWNTOWN

NOV 01 1979

M-163

242-244-246 N Queen St

by Tony Wrenn.

August 1978

DEC 10 1980

Berkeley Co. Mult. Res.
WJ

0688



DOWNTOWN

M-163

249 N. Queen St (Margo's)

DEC 10

251 N. Queen St (Lewis')

253 N. Queen St (door beside
Lewis' paint)

255 N. Queen St (Adult Book Store)

NOV 01 1979

by Tony Wrenn

August 1978

068B

Berkeley Co.
Mult. Res.

WJ

255 N. Queen (Sweden
Adult Book Store)
(Door beside Lewis)



DOWNTOWN

NOV 01 1979

M-163

255 N. Queen St

by Tony Wrenn

August 1978

DEC 10 1980

Berkley Co. Mult. Res.

WJ

0688

LU



3578

Downtown Mortuary M163
300 block north Green
was Gayles chief.
Don Wood Nov 1920



DOWNTOWN NOV 01 1979 M-163

100 block of S Queen St

(looking north from mid-block-
western side: City Market in ctr)

by Don C Wood

June 1979

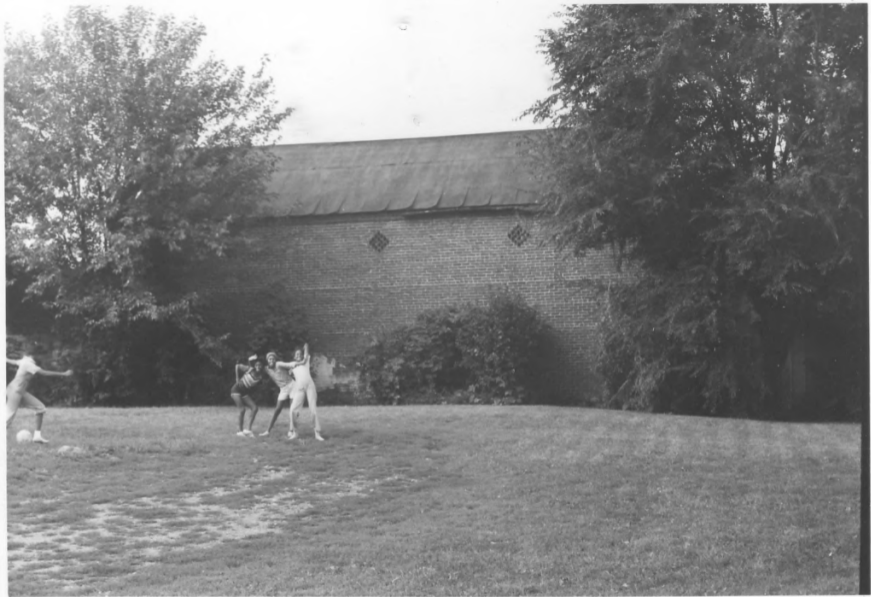
DEC 10 1980 605

Berkeley Co. Mult. Res.
WV



3578

Downtown Martinsburg
11/63 Instruction
Bob's carry out
Corner of Raleigh and Martinsburg
Oakwood Nov 1980



DOWNTOWN

NOV 01 1979 M-163

N Raleigh St at W Race St

by Tony Wrenn

August 1978

Berkeley Co. Mult. Res. Area/ WV

964B

DEC 10 1980



NO
DOWNTOWN

M-163 CE

NOV 01 1979

N Raleigh St at W Race St

by Tony Wrenn

August 1978

Berkeley Co. Mult. Res. Area/WV

9648

DEC 10 1980



015E

Downtown Grafton N163
Service Station corner of
Raleigh and Pine.
Don Wood Nov 1980



DOWNTOWN

NOV 01 1979

M-163

117 N Raleigh St

by Tony Wrenn

Aug 1978

DEC 10 1980

Berkeley Co. Mult. Res. Area/WV

9638



DOWNTOWN

M-163

NOV 01 1978

226-242 N Raleigh St

by Tony Wrenn

Aug 1978

9640

Berkeley Co. Mult. Res. Area/WV

DEC 10 1980



DOWNTOWN NOV 01 1979 M-163

226-242 N. Raleigh St

by Tony Wrenn Aug 1978

963

Berkeley Co. Mult. Res. Area/WV

DEC 10 1980



DOWNTOWN NOV 01 1979 M-163

226-242 N Raleigh St

by Tony Wrenn Aug 1978

9630

Berkeley Co. Mult. Res. Area/ WV

DEC 10 1980

2312



DOWNTOWN

M-163

NOV 01 1979

226-242 N Raleigh St

by Tony Wrenn

Aug 1978

Berkeley Co. Mult. Res. Area/WV

963B

DEC 10 1980



DOWNTOWN

NOV 01 1979

M-163

226-242 N Raleigh St

by Tony Wrenn

Aug 1978

000010000

EC 103

Berkeley Co. Mult. Res. Area/WV

964B



DOWNTOWN

M-163

NOV 01 1979

101 S Raleigh St

by Tony Wrenn

Aug 1978

Berkeley Co. Mult. Res. Area/WV

963B

DEC 10 1980



DOWNTOWN

NOV 01 1979

M-163

101 S Raleigh St

by Tony Wrenn

Aug 1978

Berkeley Co. Mult. Res. Area/WV

963B

DEC 10 1980



DOWNTOWN

NOV 01 1979

M-163

107 S Raleigh St

by Tony Wrenn

Aug 1978

9638

Berkeley Co. Mult. Res. Area. WV



DOWNTOWN NOV 01 1979 M-163

107 S Raleigh St

by Tony Wrenn Aug 1978

Berkeley Co. Mult. Res. Area/WV

963B

DEC 10 1980



DOWNTOWN

NOV 01 1979

M-163

107 S Raleigh St

by Tony Wrenn

Aug 1978

Berkley Co. Milt. Res. Area/WV

963B

DEC 10 1980



DOWNTOWN NOV 01 1979 M-163

107 S Raleigh St

by Tony Wrenn Aug 1978

Berkeley Co. Mult. Res. Area / MW

9638

DEC 10 1980



DOWNTOWN NOV 01 1979 M-163

111 S Raleigh St

by Tony Wrenn Aug 1978

Berkeley Co. Mult. Res. Area/ WV

9630

DEC 10 1980



DOWNTOWN

NOV 01 1979

M-163

209 S Raleigh St

by Tony Wrenn

Aug 1978

Berkeley Co. Mult. Res. Area/WV

0856



DOWNTOWN

NOV 01 1979

M-163

213 S Raleigh St

by Tony Wrenn

Aug 1978

Berkeley Co. Mult. Res. Area/WV

9588

DEC 10 1980



DOWNTOWN NOV 01 1979

M-163

219 S Raleigh St (nearest)

by Tony Wrenn

Aug 1978

Berkeley Co. Multiple Res. Area/WV

9588

DEC 10 1980



DOWNTOWN

NOV 01 1979

M-163

522 W Burke St (center);

526 W Burke St (left)

by Tony Wrenn Aug 1978.

8185

BERKELEY CO. MULT. RES. AREA/WV

522
22



DOWNTOWN

M-163

522 W. **NOV 01 1979** Burke St

by Tony Wrenn Aug 1978

Berkeley Co. Multiple Resource Area/WV

804B

DEC 10 1980



DEC 10 1980

DOWNTOWN

M-163

NOV 01 1979

527 W Burke St

by Tony Wrenn Aug 1978

5

8 1 8

Berkeley Co. Multiple REsource Area/WV

THIS PAPER MANUFACTURED BY KODAK



DOWNTOWN

NOV 01 1979

M-163

DEC 10 1980

100 N Raleigh St

by Tony Wrenn

August 1978

Berkeley Co. Mult. Res. Area/ WV

8 E 9 6



DOWNTOWN

M-163

NOV 01 1979

125 E Burke St

by Tony Wrenn

Aug 1978

Berkeley Co. Mult. Res. Area/ WV

546B

DEC 10 1980



DOWNTOWN

M-163

NOV 01 1979

127 E. Burke St

by Tony Wrenn

Aug 1978

Berkeley Co. Multiple Res. Area
WV
demolished, 1979

DEC 10 1980



DOWNTOWN

M-163

NOV 01 1979

205-207 E Burke St

DEC 10 1980
by Tony Wrenn

Aug 1978

Berkeley Co. Mult. Res. Area / W

7638

*205-207
E. Burke St*



DOWNTOWN

M-163

NOV 01 1979

203 E Burke St

by Tony Wrenn

Aug 1978

Berkeley Co. Multiple Resource
Area (WV)

5408

DEC 10 1980

THIS PAPER MANUFACTURED BY KODAK



DOWNTOWN

M-163

DEC 1 0 1980

NOV 01 1979
219 E Burke St

by Tony Wrenn

Aug 1978

Berkeley Co. Multiple Res. *Wrenn*

546B

DEC 1 0 1980



DOWNTOWN

M-163

NOV 01 1979

NOV 01 1979

123-125 W Burke St

by Tony Wrenn

Aug 1978

0309

Berkely Co. Multiple
Res. Area. / wv



DEC 10 1980

DOWNTOWN

M-163

NOV 01 1979

123 W Burke St

by Tony Wrenn

Aug 1978

Berkley Co. Mutt, Res. Area

WV

776B



3578

Downtown Northumbria N11 63

100 Bloch Wood College

Don Wood

Intrusion Nov
1980



DOWNTOWN

NOV 01 1979

M-163

100 W King St

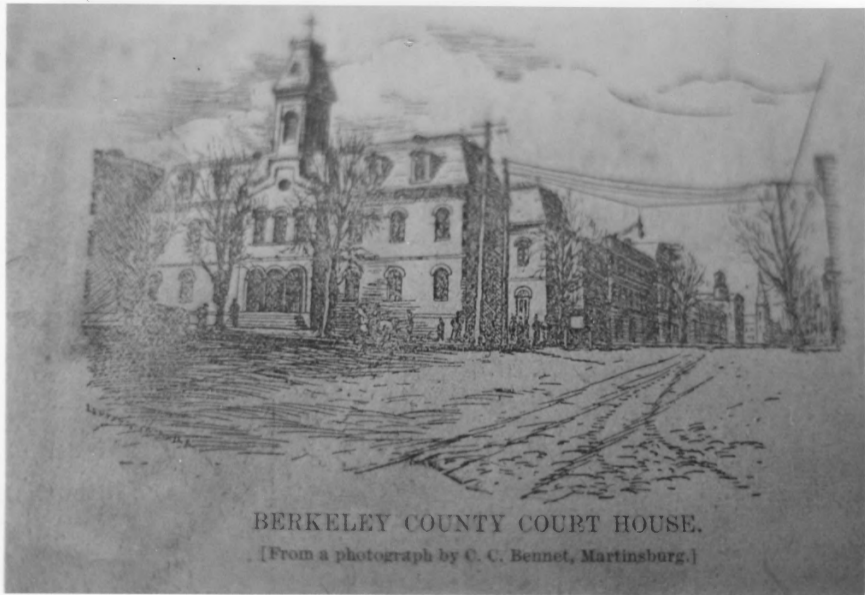
DEC 10 1980

by Tony Wrenn

August 1978

0 6 0 9

Berkeley Co. Mult. Res. Area/WV



BERKELEY COUNTY COURT HOUSE.

[From a photograph by C. C. Bennet, Martinsburg.]

DOWNTOWN

NOV 01 1979

M-163

100 W King St

DEC 10 1980

by Tony Wrenn

August 1978

015L

Berkeley Co. Mult. Res. Area/WV



DOWNTOWN

NOV 01 1979

M-163

527 W Burke St

by Tony Wrenn

Aug 1978

8185

Berkeley Co. Mult. Res. Area/WV

DEC 10 1980

ER
CURED
KODAK

THIS PAPER
MANUFACTURED
BY KODAK

THIS PA
MANUFAC
BY K

THIS PAPER
MANUFACTURED
BY KODAK

THIS PAPER
MANUFACTURED
BY KODAK



212 W Race Street

by Tony Wrenn

August 1978.

DEC 10 1980

Berkeley Co. Mult. Res.

WJ

9598



DOWNTOWN

M-163

NOV 01 1979

214 W Race Street

DEC 10 1980

by Tony Wrenn

August 1978

Berkeley Co. Mult. Res. Area

WC

214

9598



DOWNTOWN

M-163

NOV 01 1979

218 W Race Street

by Tony Wrenn

August 1978

DEC 1 0 1980

Berkeley Co. Mult. Res.
WV

9610



DOWNTOWN NOV 01 1979 M-163

223 W Race Street (left)

by Tony Wrenn August 1978

DEC 10 1980

Berkley Family Rec.
WV

9610

223-225



DOWNTOWN NOV 01 1979

M-163

224-226-228 W Race Street

by Tony Wrenn

August 1978

DEC 10 1980

Berkeley Co. Mult. Co.
Wd

961B

224-6-V



DOWNTOWN

NOV 01 1979 M-163

311 W Race St

by Tony Wrenn

August 1978

REC 10 1980

Berkeley Co. Mult. Res.
WV

8196



DOWNTOWN NOV 01 1979

M-163

314 W Race Street

DEC 10 1980

by Tony Wrenn

August 1978

Berkeley Co. Mult. Res.
W D

9610



DOWNTOWN

M-163

NOV 01 1979
314 W Race St

by Tony Wrenn

August 1978

DEC 10 1980

Berkeley Co. Mult. Res.
WJ

9618



DOWNTOWN NOV 01 1979

M-163

322 W Race St (right)
324 W Race St (left)

by Tony Wrenn

August 1978

DEC 10 1980

Berkeley Co. mult. Res.
WJ

9618



322 W Race St

by Tony Wrenn

August 1978

Berkley Co. Mult. Res.
WJ

961B

DEC 10 1980



DOWNTOWN

NOV 01 1979

M-163

324 W Race St

by Tony Wrenn

August 1978

Berkeley Co. Mult. Res.
WV

DEC 10 1980

9610



DOWNTOWN

M-163

NOV 01 1979
396 W Race St

by Tony Wrenn

August 1978

Berkeley Co. Mult. Res. Area/WV

NOTE: Triple windows (gabled dormers) with segmental arched openings are c.1900.

DEC 10 1980



396 W Race St

by Tony Wrenn

August 1978

Berkeley Co. Mult. Res. Area

W

NOTE: Elliptical fanlighted entrance
with diamond panel sidelights
are c.1900.

NOV 10 1979

DEC 10 1980



DOWNTOWN

NOV 01 1979

M-163

396 W Race St

by Tony Wrenn

August 1978

Berkeley Co. Multiple Res. Area/WV
DEC 10 1980

NOTE: Gabled dormers with segmental arched openings and porch with chamfered posts, sawn brackets are c.1900.



DOWNTOWN

NOV 01 1979

M-163

401 W Race St

by Tony Wrenn

August 1978

DEC 10 1980

Berkeley Co. Multiple Res. Area/WV

964B



DOWNTOWN

NOV 01 1979

M-163

401 W Race St

by Tony Wrenn

August 1978

Berkeley Co. Multiple Resource Area/WV

NOTE: Random width siding and
returning molded cornice.



DOWNTOWN

M-163

401 W Race St

by Tony Wrenn

August 1978

Berkeley Co. Multiple Resource Area/WV

NOTE: Random width siding and 9/6 windows on first level, in stepped wooden surrounds.

NOV 01 1979



DOWNTOWN

NOV 01 1979

M-163

406-408 W Race St

by Tony Wrenn

August 1978

DEC 10 1980

Berkeley Co. Mult. Res Area
WV

964B



DOWNTOWN

NOV 01 1979

M-163

409 W Race St

by Tony Wrenn

August 1978

DEC 10 1981

Berkeley Co. Mult. Res. Area
WU

964B



DOWNTOWN NOV 01 1979

M-163

411 W Race St

by Tony Wrenn

August 1978

*Berkeley Co. Mult. Res. Area
WW*

964B

DEC 10 1980

THIS PAPER IS MANUFACTURED BY KODAK



DOWNTOWN

NOV 01 1979

M-163

510 W Race St

DEC 10 1980

by Tony Wrenn

August 1978

Berkeley Co. Mult. Res. Area/ WV

9648



DOWNTOWN

M-163

NOV 01 1979

125 (light) & 127 E Burke St

by Tony Wrenn

Aug 1978

017E

dismalished, 1979

RSC

Berkeley Co. Mult. Res. Area/ WV.

DEC 10 1980



DOWNTOWN

M-163

NOV 01 1979

410 W Race St

Tony Wrenn

August 1978

DEC 10 1989

Berkeley Co. Mult. Res. Area

WV

9640

ADMIRAL BOARMAN HOUSE

EXTERIOR RESTORATION

July 1983
Before



July 1984
After



ADMIRAL BOARMAN HOUSE
EXTERIOR RESTORATION

July 1983
Before



July 1984
After

