



1. Estate Mount Victory-Sugar Factory
2. Frederiksted, St. Croix, U.S.V.I.
3. Russell Wright
4. May 3, 1977
5. V.I. Planning Office  
P.O. Box 2606  
St. Thomas, Virgin Islands 00801
6. Northeast
7. Photograph number - 126

AUG 15 1977

FEB 17 1978



1. Estate Mount Victory-Sugar Factory
2. Frederiksted, St. Croix, U.S.V.I
3. Russell Wright
4. May 4, 1977
5. V.I. Planning Office  
P.O. Box 2606  
St. Thomas, Virgin Islands 00801
6. Interior
7. Photograph number -2 of 6

FEB 17 1978

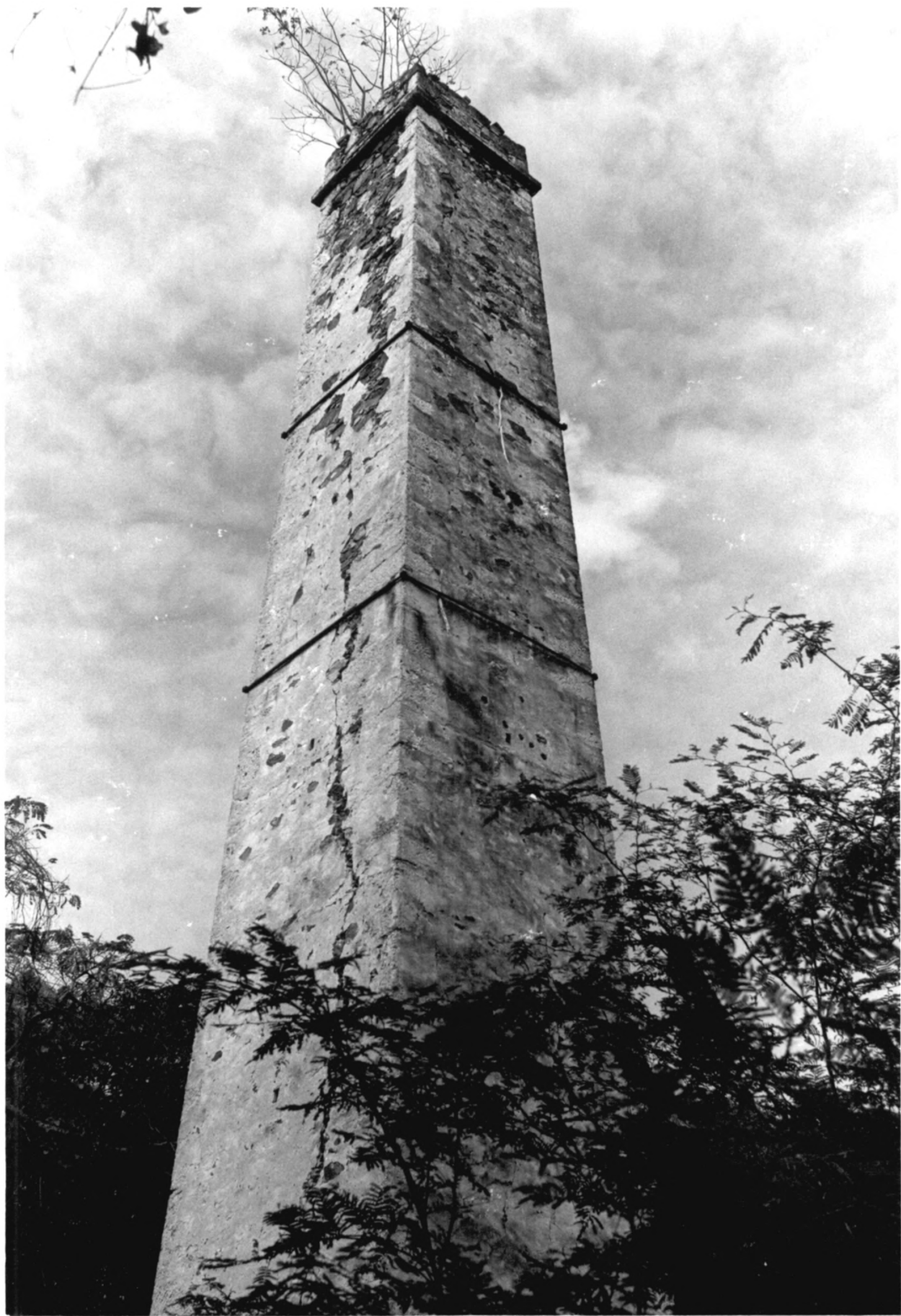
AUG 15 1977



1. Estate Mount Victory-Sugar Factory
2. Frederiksted, St. Croix, U.S.V.I.
3. Russell Wright
4. May 3, 1977
5. V.I. Planning Office  
P.O. Box 2606  
St. Thomas, Virgin Islands 00801
6. Southeast
7. Photograph number -3 *g6*

FEB 17 1978

AUG 15 1977



1. Estate Mount Victory-Chimney
2. Frederiksted, St. Croix, U.S.V.I.
3. Russell Wright
4. May 3, 1977
5. V.I. Planning Office  
P.O. Box 2606  
St. Thomas, Virgin Islands 00801
6. Southeast
7. Photograph number -426

AUG 15 1977

FEB 17 1978

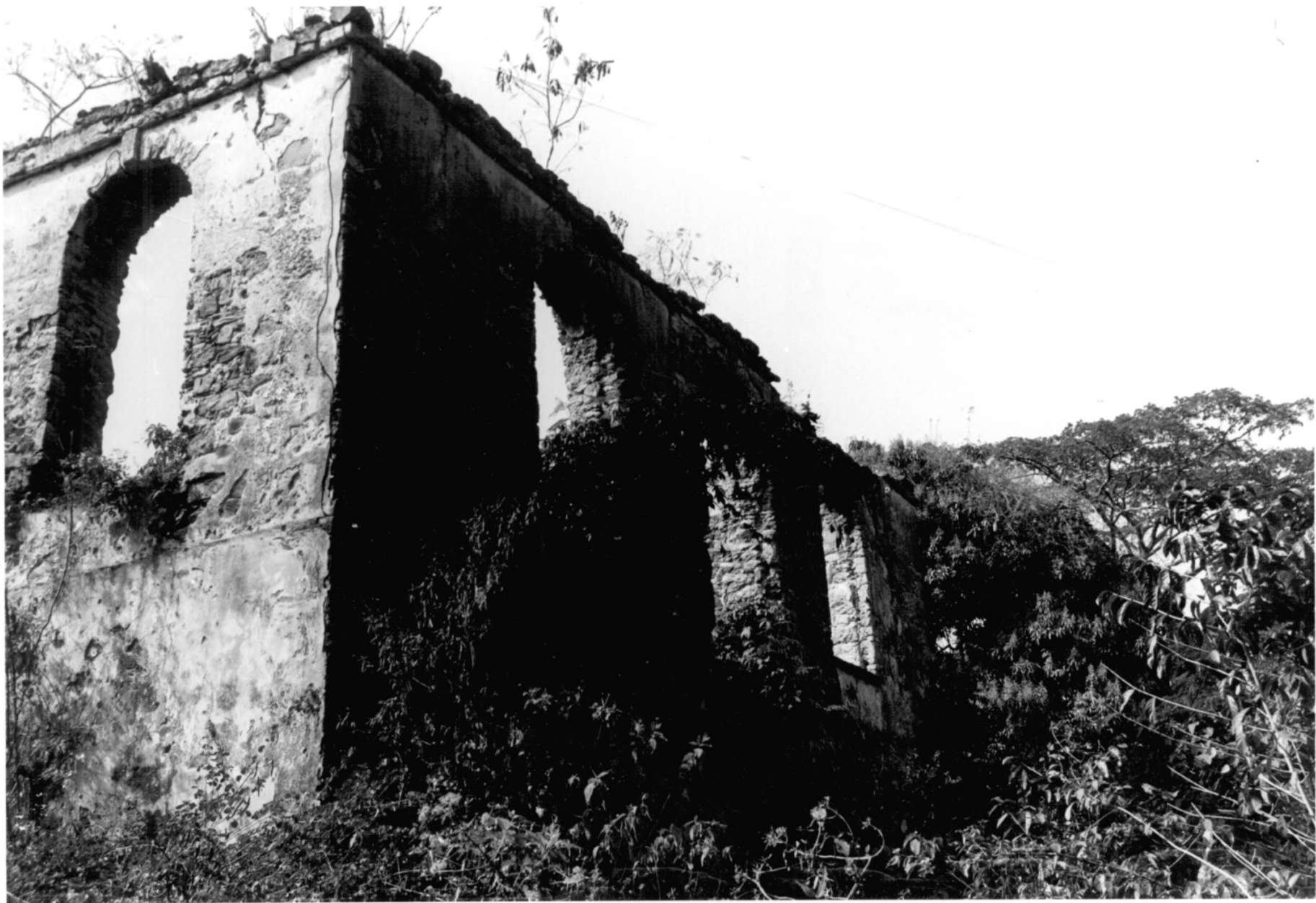




1. Estate Mount Victory-School
2. Frederiksted, St. Croix, U.S.V.I.
3. Russell Wright
4. May 3, 1977
5. V.I. Planning Office  
P.O. Box 2606  
St. Thomas, Virgin Islands 00801
6. Southeast
7. Photograph number -5 96

FEB 17 1978

AUG 15 1977



1. Mount Victory-School
2. Frederiksted, St. Croix, U.S.V.I.
3. Russell Wright
4. May 3, 1977
5. V.I. Planning Office  
P.O. Box 2606  
St. Thomas, Virgin Islands 00801
6. West
7. Photograph number -6 **96**

**AUG 15 1977**

**FEB 17 1978**