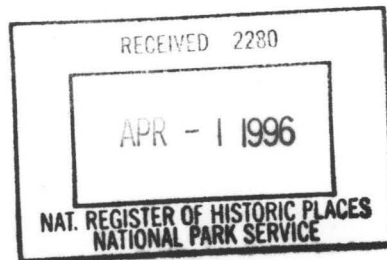


504

United States Department of the Interior  
National Park Service



NATIONAL REGISTER OF HISTORIC PLACES  
REGISTRATION FORM

=====

1. Name of Property

=====

historic name: Batesville Confederate Monument

other name/site number: IN0579S

=====

2. Location

=====

street & number: Courthouse Lawn (at the courthouse's northeastern corner,  
next to the intersection of S. Broad St. and W. Main St.)

not for publication: N/A

city/town: Batesville

vicinity: N/A

state: AR county: Independence code: AR 063 zip code: 72501

=====

3. Classification

=====

Ownership of Property: Public-local

Category of Property: Object

Number of Resources within Property:

Contributing	Noncontributing
--------------	-----------------

<u>      </u>	<u>      </u> buildings
<u>      </u>	<u>      </u> sites
<u>      </u>	<u>      </u> structures
<u>  1  </u>	<u>      </u> objects
<u>  1  </u>	<u>  0  </u> Total

Number of contributing resources previously listed in the National Register: N/A

Name of related multiple property listing: "Something So Dim It Must Be Holy:" Civil War Commemorative Sculpture in Arkansas, 1886-1934

=====  
**4. State/Federal Agency Certification**  
=====

As the designated authority under the National Historic Preservation Act of 1986, as amended, I hereby certify that this X nomination \_\_\_\_\_ request for determination of eligibility meets the documentation standards for registering properties in the National Register of Historic Places and meets the procedural and professional requirements set forth in 36 CFR Part 60. In my opinion, the property X meets \_\_\_\_\_ does not meet the National Register Criteria. \_\_\_\_\_ See continuation sheet.

Cathryn A. Slater  
Signature of certifying official

3-19-96  
Date

Arkansas Historic Preservation Program  
State or Federal agency and bureau

In my opinion, the property X meets \_\_\_\_\_ does not meet the National Register criteria. \_\_\_\_\_ See continuation sheet.

\_\_\_\_\_  
Signature of commenting or other official

\_\_\_\_\_  
Date

\_\_\_\_\_  
State or Federal agency and bureau

=====  
**5. National Park Service Certification**  
=====

I, hereby certify that this property is:

- ☒ entered in the National Register  
\_\_\_\_\_ See continuation sheet.  
☐ determined eligible for the  
National Register  
\_\_\_\_\_ See continuation sheet.  
☐ determined not eligible for the  
National Register  
☐ removed from the National Register  
\_\_\_\_\_ other (explain): \_\_\_\_\_

Edson R. Beal 5-3-96

Entered in the  
National Register

\_\_\_\_\_  
Signature of Keeper

\_\_\_\_\_  
Date  
of Action

=====  
**6. Function or Use**  
=====

Historic: RECREATION AND CULTURE

Sub: Monument/marker

Current: RECREATION AND CULTURE

Sub: Monument/marker

=====

## 7. Description

=====

Architectural Classification:

Neoclassical

\_\_\_\_\_

\_\_\_\_\_

Other Description: N/A

Materials:	foundation	<u>STONE/Limestone</u>	roof	<u>N/A</u>
	walls	<u>STONE/Limestone</u>	other	_____

Describe present and historic physical appearance. \_\_\_\_\_ See continuation sheet.

\_\_\_\_\_

### Summary

The Batesville Confederate Monument is located in the northeast corner of the Independence County Courthouse lawn at the corner of Main and Broad Sts. Designed by Otto Pfeiffer, it is vertically divided into four tiers or levels, with the two lower levels divided by a protruding tray. The three upper levels are capped by battlements with protruding turrets on each face. Made of limestone (Batesville marble), the work stands approximately 9' square at the base, 6' square on the upper level, and approximately 20' tall.

### Elaboration

The Batesville Confederate Monument is located in the northeast corner of the Independence County Courthouse lawn at the corner of Main and Broad Sts. Designed by Otto Pfeiffer, it is vertically divided into four tiers or levels, with the two lower levels divided by a protruding tray. The three upper levels are capped by battlements with protruding turrets on each face. Made of limestone (Batesville marble), the work stands approximately 9' square at the base, 6' square on the upper level, and approximately 20' tall.

Inscribed on the north side of the base is "IN MEMORY OF / THE SONS OF INDEPENDENCE COUNTY / WHO SERVED IN THE / CONFEDERATE ARMY, / THEIR MOTHERS, WIVES, SISTERS AND DAUGHTERS, / WHO, WITH PATRIOTIC DEVOTION / REMAINED STEADFAST TO THEIR CAUSE, / DURING THE / WAR PERIOD. / 1861,---1865." Near the top of the north side is a relief of crossed Confederate flags and "C S A." At the bottom of the north side is the inscription "*Designed & Executed / by / OTTO PFEIFFER / Pfeiffer Ark.*"

The south side of the base contains the inscription "ERECTED BY / SIDNEY JOHNSTON CAMP, NO. 863, / UNITED CONFEDERATE VETERANS, / SIDNEY JOHNSTON CHAPTER, NO. 135, / UNITED DAUGHTERS OF THE CONFEDERACY, / AND MANY FRIENDS. / 1907."

The east side of the base (facing Broad St.) is inscribed with the names of the 10 companies of cavalry from Independence County who served in the Civil War. It has a Confederate flag relief and "C S A" identical to the north face.

The west side of the base (opposite Broad St.) is inscribed with the names of

the 13 infantry companies from Independence County who served in the war.

The sculpture suffers from black crusting, bird guano, sugaring, and spalling. The base is experiencing black crusting, organic growth, and spalling. Two turret details on the west side of the sculpture are missing, and the southeast and northeast turrets are missing pieces. The Confederate flags on the north and east side of the sculpture are badly eroded. Overall, however, a 1995 SOS! survey notes that this monument is well-maintained.

=====

## 8. Statement of Significance

=====

Certifying official has considered the significance of this property in relation to other properties: Statewide.

Applicable National Register Criteria: A

Criteria Considerations (Exceptions): F

Areas of Significance: SOCIAL HISTORY  
\_\_\_\_\_  
\_\_\_\_\_  
\_\_\_\_\_  
\_\_\_\_\_

Period(s) of Significance: 1907 \_\_\_\_\_

Significant Dates: 1907 \_\_\_\_\_

Significant Person(s): N/A  
\_\_\_\_\_

Cultural Affiliation: N/A \_\_\_\_\_

Architect/Builder: Pfeiffer, Otto  
\_\_\_\_\_  
\_\_\_\_\_

State significance of property, and justify criteria, criteria considerations, and areas and periods of significance noted above.  
\_\_\_\_ See continuation sheet.

---

<b>Summary</b>	Criterion A, statewide significance
	Criterion Consideration F

The Batesville Confederate Monument is associated with the historic context **"Something So Dim It Must Be Holy": Civil War Commemorative Sculpture in Arkansas, 1886-1934** as a commemorative monument financed and erected through the efforts of both a descendants' and a veterans' organization in Arkansas. As such, it is eligible under Criterion A with statewide significance for its associations with the efforts of the Sidney Johnston Camp No. 135 of the United Daughters of the Confederacy and the Sidney Johnston Camp No. 863 of the United Confederate Veterans to reflect members' perceptions of the noble character and valor of the veterans and their cause. Thus, it also meets the eligibility requirements of Criteria Consideration F: Commemorative Properties.



## Elaboration

In July 1906 the Sidney Johnston Camp No. 135 of the United Daughters of the Confederacy and the Sidney Johnston Camp No. 863 of the United Confederate Veterans, both located in Batesville, decided to erect a monument to the Confederate soldiers and women of Independence County. By August 31 of that year a contract for the design and building of the monument had been signed with Otto Pfeiffer's marble quarry in nearby Pfeiffer, Arkansas. The project was completed and its cost of \$831.40, which included grading and cleaning around it, was paid for in January 1907.

The Batesville Confederate Monument was dedicated at the county courthouse on May 1, 1907. The featured orators for the occasion were Sen. James H. Berry, commander of the Arkansas Division of the U.C.V., and Gen. Robert G. Shaver, who commanded two Arkansas Confederate regiments during the Civil War. The U.D.C.'s book Confederate Monuments and Markers in Arkansas described it as an "impressive ceremony," and stated that "[the monument] has a massive appearance with dignity and grace, symbolizing the cause." The night before the unveiling, a ceremony had been held in honor of Sen. Berry featuring "Confederate flags decorated in profusion."

The Batesville Confederate Monument is associated with the historic context "Something So Dim It Must Be Holy": Civil War Commemorative Sculpture in Arkansas, 1886-1934 as a commemorative monument financed and erected through the efforts of both a descendants' and a veterans' organization in Arkansas. As such, it is eligible under Criterion A with statewide significance for its associations with the efforts of the Sidney Johnston Camp No. 135 of the United Daughters of the Confederacy and the Sidney Johnston Camp No. 863 of the United Confederate Veterans to reflect members' perceptions of the noble character and valor of the veterans and their cause. Thus, it also meets the eligibility requirements of Criteria Consideration F: Commemorative Properties.

## 9. Major Bibliographical References

Arkansas Gazette, May 16, 1911, p. 10.

Letter dated November 20, 1992, from Anna Parks to Toni Davidson, included in SOS! survey files on file at Arkansas Historic Preservation Program.

"Confederate Monuments and Markers in Arkansas," Arkansas Division U.D.C., 1960, pp. 9-11.

\_\_\_ See continuation sheet.

Previous documentation on file (NPS):

- preliminary determination of individual listing (36 CFR 67) has been requested.
- previously listed in the National Register
- previously determined eligible by the National Register
- designated a National Historic Landmark
- recorded by Historic American Buildings Survey # \_\_\_\_\_
- recorded by Historic American Engineering Record # \_\_\_\_\_

Primary Location of Additional Data:

X State historic preservation office  
- Other state agency  
- Federal agency  
- Local government  
- University  
- Other -- Specify Repository: \_\_\_\_\_

=====

### 10. Geographical Data

=====

Acreage of Property: Less than one

UTM References:	Zone	Easting	Northing	Zone	Easting	Northing
A	<u>15</u>	<u>621780</u>	<u>3959120</u>	B	<u>15</u>	_____
C	<u>15</u>	_____	_____	D	<u>15</u>	_____

\_\_\_\_ See continuation sheet.

Verbal Boundary Description: \_\_\_\_ See continuation sheet.

An area around the monument defined by a 25 foot radius centered on the monument itself.

Boundary Justification: \_\_\_\_ See continuation sheet.

This boundary includes all the property historically associated with this resource.

=====

### 11. Form Prepared By

=====

Name/Title: John Slater, Special Projects Intern/AHPP Staff

Organization: Arkansas Historic Preservation Program Date: 03/13/96

Street & Number: 323 Center Street, Suite 1500 Telephone: (501) 324-9880

City or Town: Little Rock State: AR Zip: 72201

UNITED STATES DEPARTMENT OF THE INTERIOR  
NATIONAL PARK SERVICE

NATIONAL REGISTER OF HISTORIC PLACES  
EVALUATION/RETURN SHEET

REQUESTED ACTION: NOMINATION

PROPERTY Batesville Confederate Monument  
NAME:

MULTIPLE  
NAME:

STATE & COUNTY: ARKANSAS, Independence

DATE RECEIVED: 4/01/96 DATE OF PENDING LIST: 4/16/96  
DATE OF 16TH DAY: 5/02/96 DATE OF 45TH DAY: 5/16/96  
DATE OF WEEKLY LIST:

REFERENCE NUMBER: 96000509

NOMINATOR: STATE

REASONS FOR REVIEW:

APPEAL: N DATA PROBLEM: N LANDSCAPE: N LESS THAN 50 YEARS: N  
OTHER: Y PDIL: N PERIOD: N PROGRAM UNAPPROVED: N  
REQUEST: N SAMPLE: N SLR DRAFT: Y NATIONAL: N

COMMENT WAIVER: N

☒ ACCEPT ☐ RETURN ☐ REJECT 5-3-96 DATE

ABSTRACT/SUMMARY COMMENTS:

Entered in the  
National Register

RECOM./CRITERIA \_\_\_\_\_

REVIEWER \_\_\_\_\_ DISCIPLINE \_\_\_\_\_

TELEPHONE \_\_\_\_\_ DATE \_\_\_\_\_

DOCUMENTATION see attached comments Y/N see attached SLR Y/N



Batesville Confederate Monument

Batesville, Independence Co., Arkansas

Photo by Helen Bonny

July 1995

negative in file @ NHPP

View from Northwest





Batesville Confederate Monument

Batesville, Independence Co., Arkansas

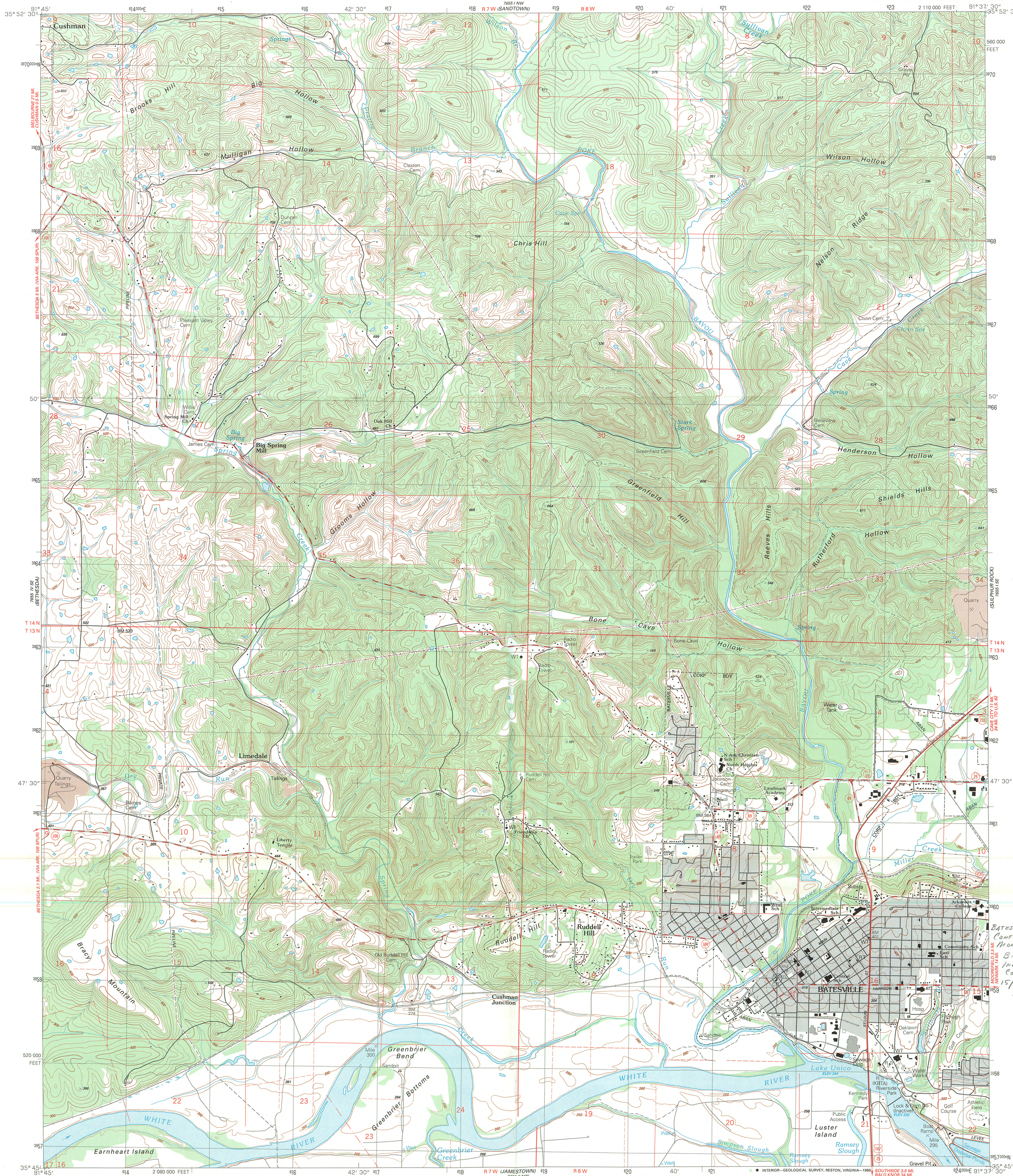
Photo by Helen Bonny

July 1995

Negative on file @ AHPP

View from Northeast





Produced by the United States Geological Survey

Control by USGS and NOS/NOAA

Topography by photogrammetric methods from aerial photographs taken 1986. Field checked 1987. Map edited 1989. Supersedes Batesville map dated 1943.

Projection and 10,000-foot grid ticks: Arkansas coordinate system, north zone (Lambert conformal conic)

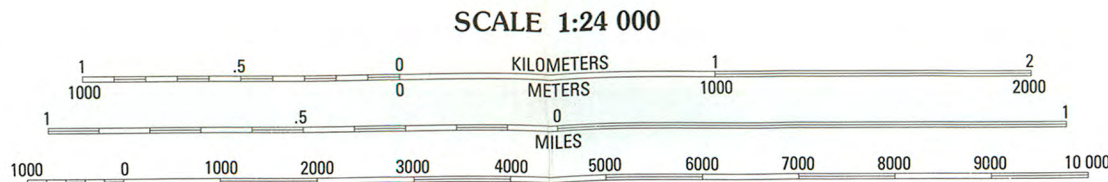
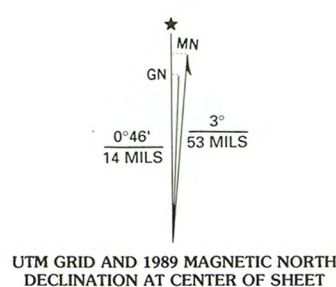
1000-meter Universal Transverse Mercator grid, zone 15

1927 North American Datum

To place on the predicted North American Datum 1983, move the projection lines 5 meters south and 13 meters east as shown by dashed corner ticks

Gray tint indicates areas in which only landmark buildings are shown

Fine red dashed lines indicate selected fence and field lines where generally visible on aerial photographs. This information is unchecked



CONTOUR INTERVAL 20 FEET  
SUPPLEMENTARY CONTOUR INTERVAL 10 FEET  
NATIONAL GEODETIC VERTICAL DATUM OF 1929



ROAD CLASSIFICATION	
Primary highway, hard surface	Light-duty road, hard or improved surface
Secondary highway, hard surface	Unimproved road
Interstate Route	U. S. Route
	State Route

BATESVILLE, ARK.

35091-G6-TF-024

1989

DMA 7655 1-SERIES V884

THIS MAP COMPLIES WITH NATIONAL MAP ACCURACY STANDARDS  
FOR SALE BY U. S. GEOLOGICAL SURVEY, DENVER, COLORADO 80225 OR RESTON, VIRGINIA 22092  
AND ARKANSAS GEOLOGICAL COMMISSION, LITTLE ROCK, ARKANSAS 72204  
A FOLDER DESCRIBING TOPOGRAPHIC MAPS AND SYMBOLS IS AVAILABLE ON REQUEST