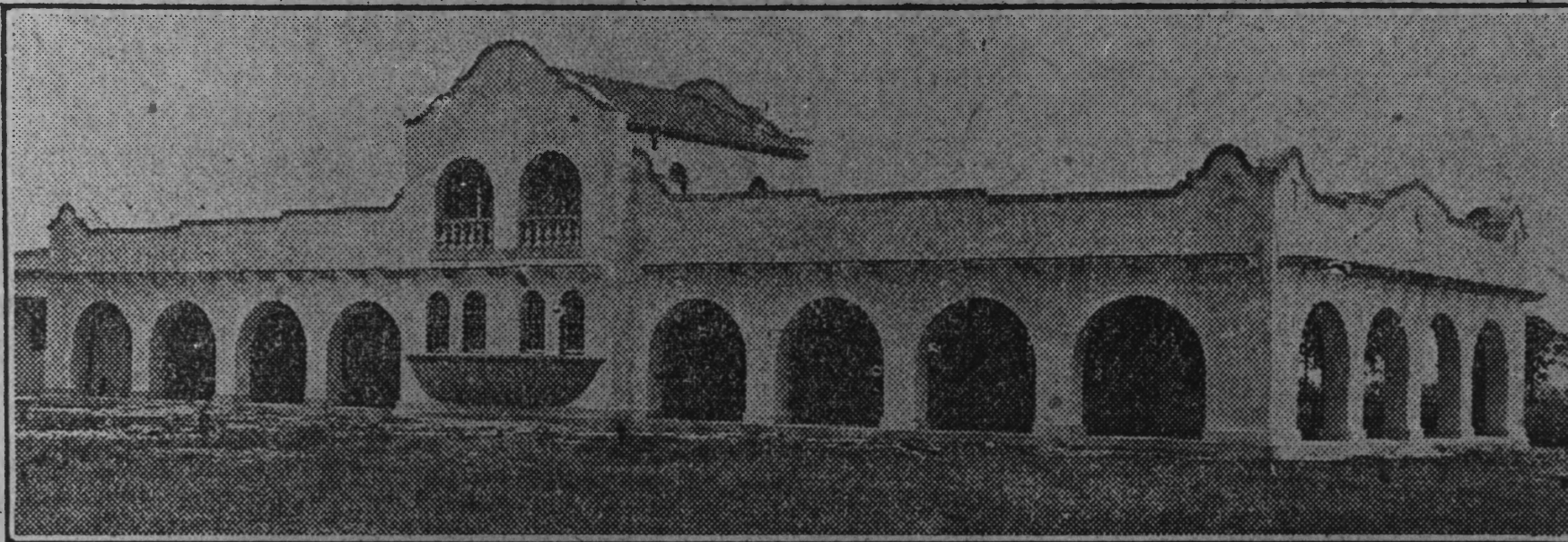


1. MRNS #30 A.C.L. Depot
2. 1 South School Avenue , Sarasota  
( Sarasota County , Florida )
3. John McCarthy , County Historian
4. May 31 1983
5. Planning Dept. , Sarasota City Hall
6. Chamber of Commerce Brochure 1925 pg20
7. Roll# B : 18A



## A. C. L. STATION HERE



The Atlantic Coast Lines have one of the most striking examples of Spanish architecture in the city in that beautiful station at the foot of Main street.

(Photo by San Leon Studio)

1. MRNS #30 A.C.L. Depot
2. 1 South School Avenue , Sarasota  
( Sarasota County , Florida )
3. John McCarthy , County Historian
4. May 31 1983
5. Planning Dept. , Sarasota City Hall
6. Sara. Herald 15 Dec 1926 pg 12
7. Roll# B : 34A



1. MRNS #30 A.C.L. Depot
2. 1 South School Avenue, Sarasota  
(Sarasota County, Florida)
3. John McCarthy, County Historian
4. March 26, 1983
5. Planning Department, Sarasota City Hall
6. West Elevation
7. Roll #1: 35





1. MRNS #30 A.C.L. Depot
2. 1 South School Avenue , Sarasota  
( Sarasota County , Florida )
3. John McCarthy , County Historian
4. March 29 1983
5. Planning Dept., Sarasota City Hall
6. East Elevation
7. Roll# 2 : 10



A black and white photograph of a building facade. The building has a light-colored, possibly stucco, exterior. At the top, there is a decorative, arched pediment with a central floral or geometric motif. Below the pediment, a dark rectangular sign with the word "SARASOTA" in white, serif capital letters is mounted on the wall. A horizontal line of utility wires or pipes runs across the middle of the facade, supported by small brackets. Below this line, there is a small, dark doorway or entrance. The foreground is filled with tall grasses and some palm fronds. A large palm tree trunk is visible on the right side of the frame. The sky is dark and overcast.

SARASOTA

1. MRNS #30 A.C.L. Depot
2. 1 South School Avenue , Sarasota  
( Sarasota County , Florida )
3. John McCarthy , County Historian
4. March 29 1983
5. Planning Dept. , Sarasota City Hall
6. East Elevation
7. Roll# 2 : 11



1. MRNS #30 A.C.L. Depot
2. 1 South School Avenue , Sarasota  
( Sarasota County , Florida )
3. John McCarthy , County Historian
4. March 26 1983
5. Planning Dept. , Sarasota City Hall
6. South Elevation
7. Roll# 1 : 36



47



1. MRNS #30 A.C.L. Depot
2. 1 South School Avenue , Sarasota  
( Sarasota County , Florida )
3. John McCarthy , County Historian
4. April 30 1983
5. Planning Dept. , Sarasota City Hall
6. North Elevation
7. Roll# 16 : 31