



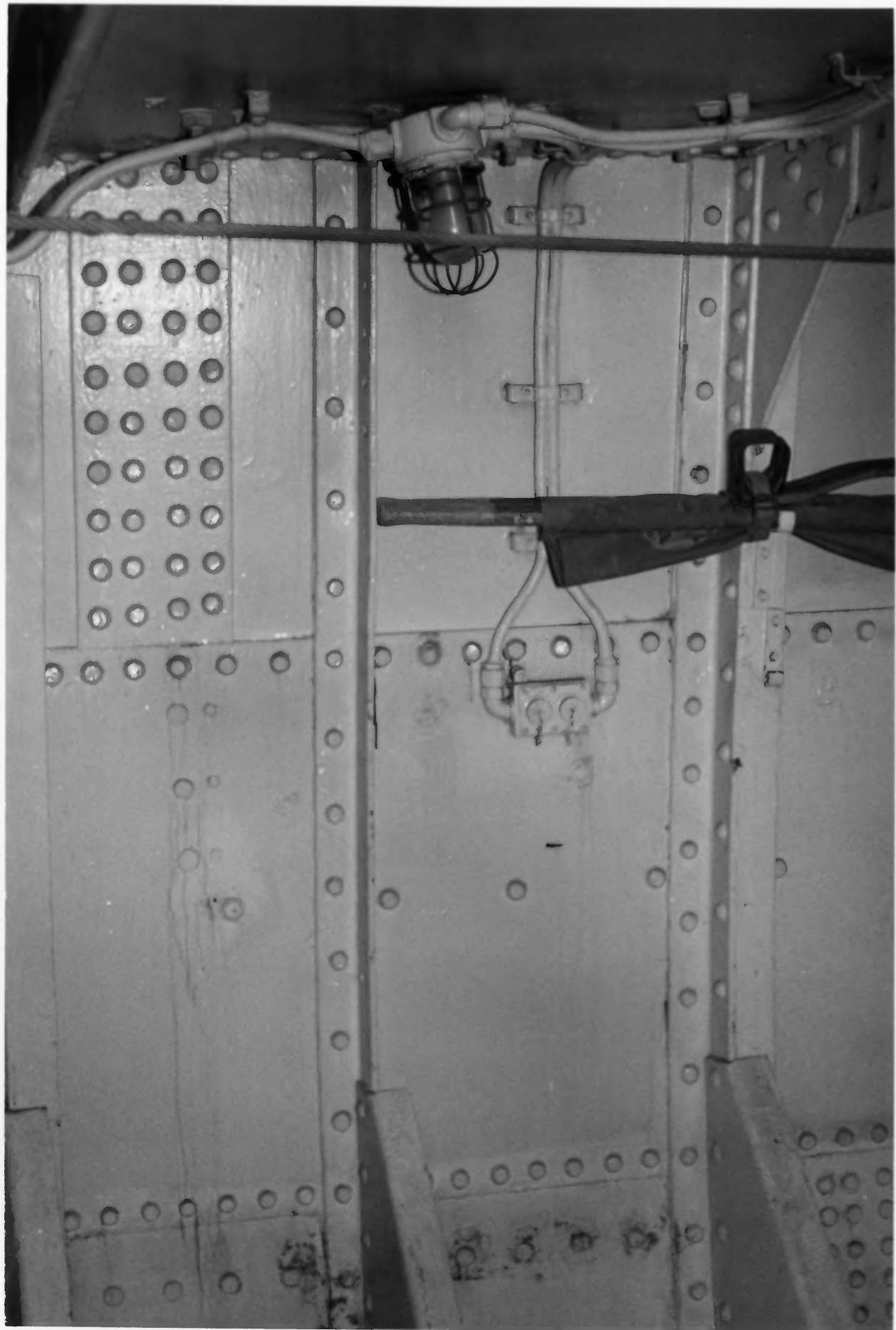
DUWAMISH, Seattle, Washington
Photo by James P. Delgado, 1988 (NPS)
Seattle Fire Department
Port bow view. Photo #1



DUWAMISH, Seattle, Washington
Photo by James P. Delgado, 1988 (NPS)
Seattle Fire Department
Outboard profile. Photo #2



DUWAMISH, Seattle, Washington
Photo by James P. Delgado, 1988 (NPS)
Seattle Fire Department
Trunk deck, showing monitors and stack.
Photo #3

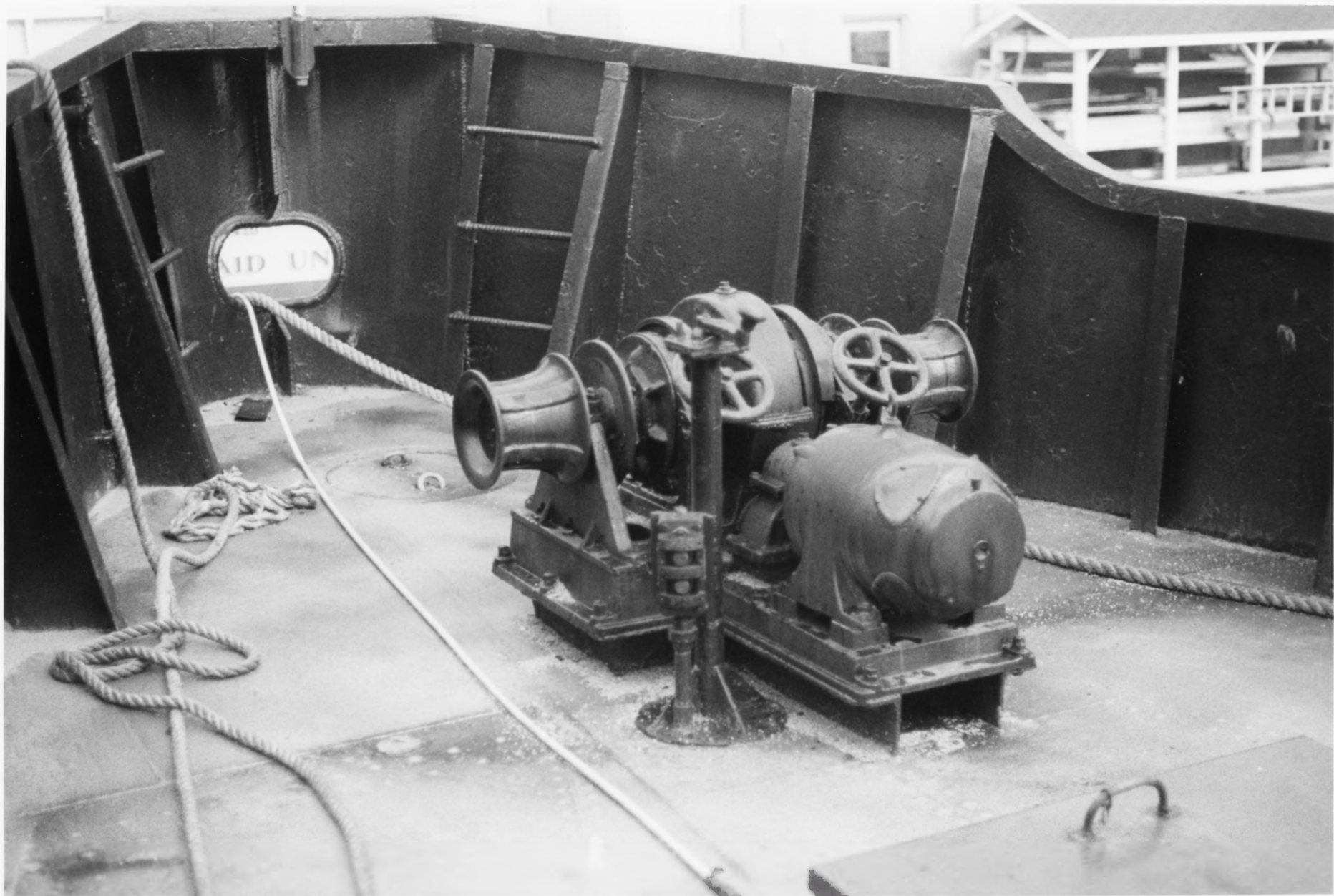


DUWAMISH, Seattle, Washington

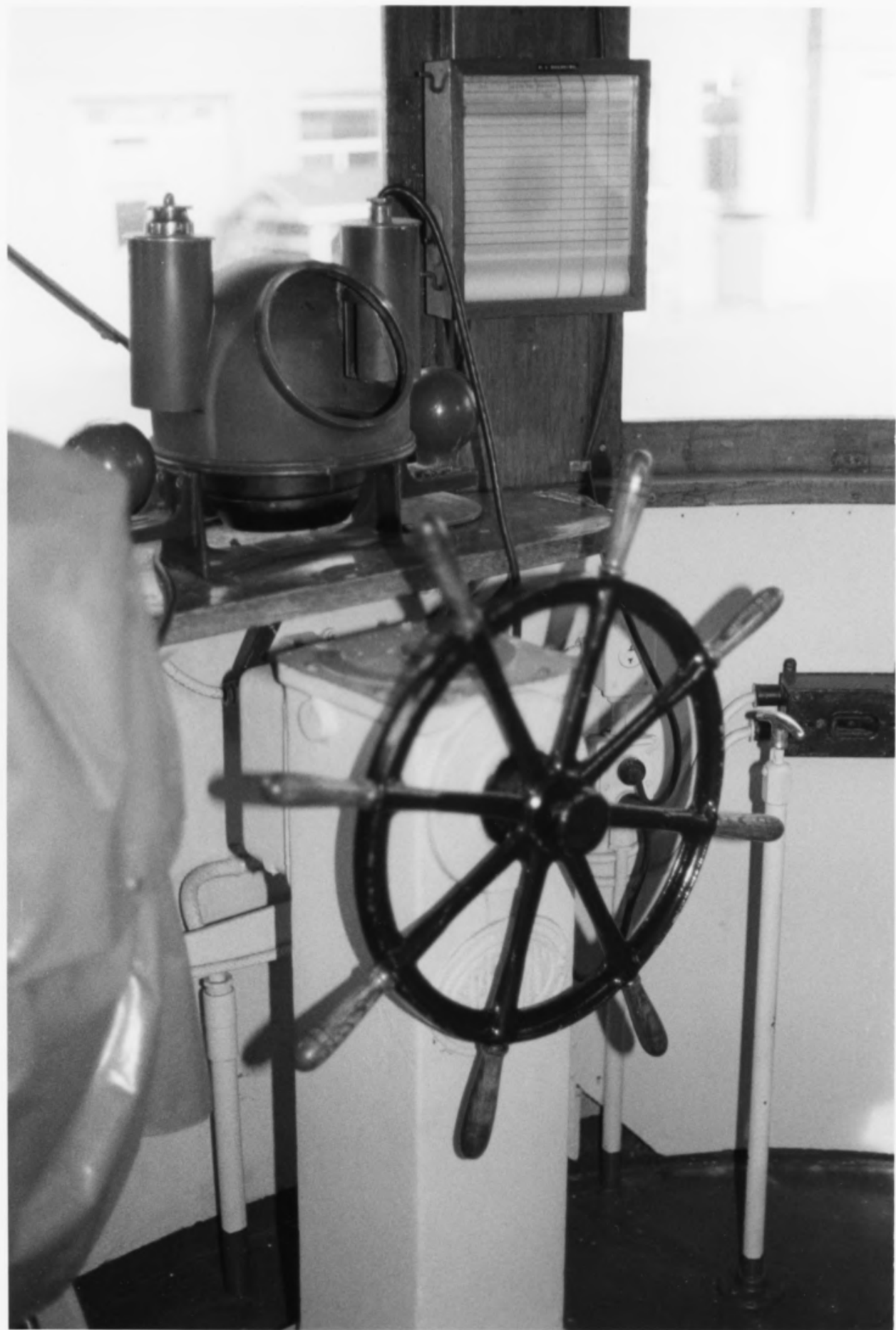
Photo by James P. Delgado, 1988 (NPS)

Seattle Fire Department

Typical construction of hull. Photo #4



DUWAMISH, Seattle, Washington
Photo by James P. Delgado, 1988 (NPS)
Seattle Fire Department
Windlass on foredeck. Photo #5

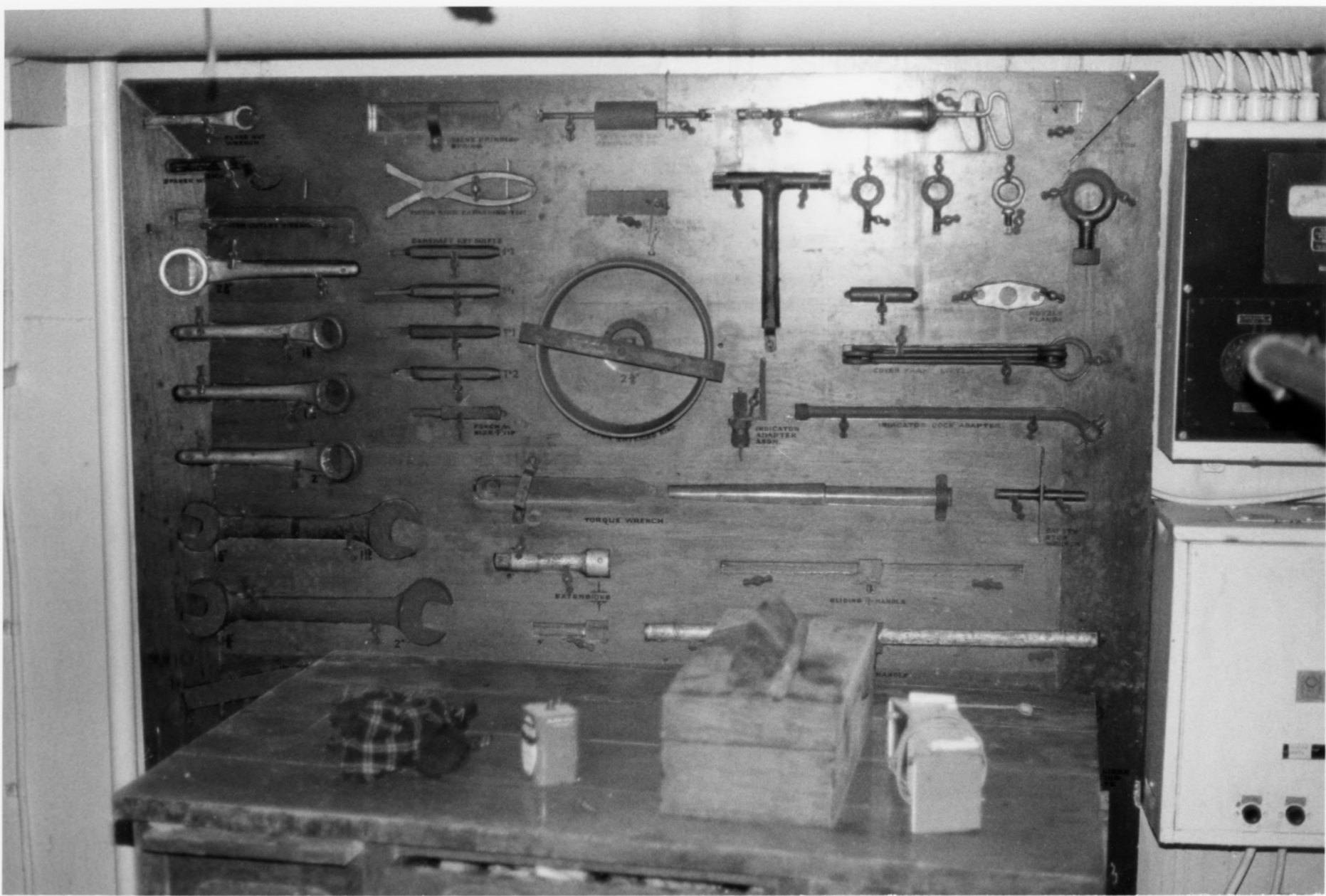


DUWAMISH, Seattle, Washington

Photo by James P. Delgado, 1988 (NPS)

Seattle Fire Department

Wheel and binnacle. Photo #6

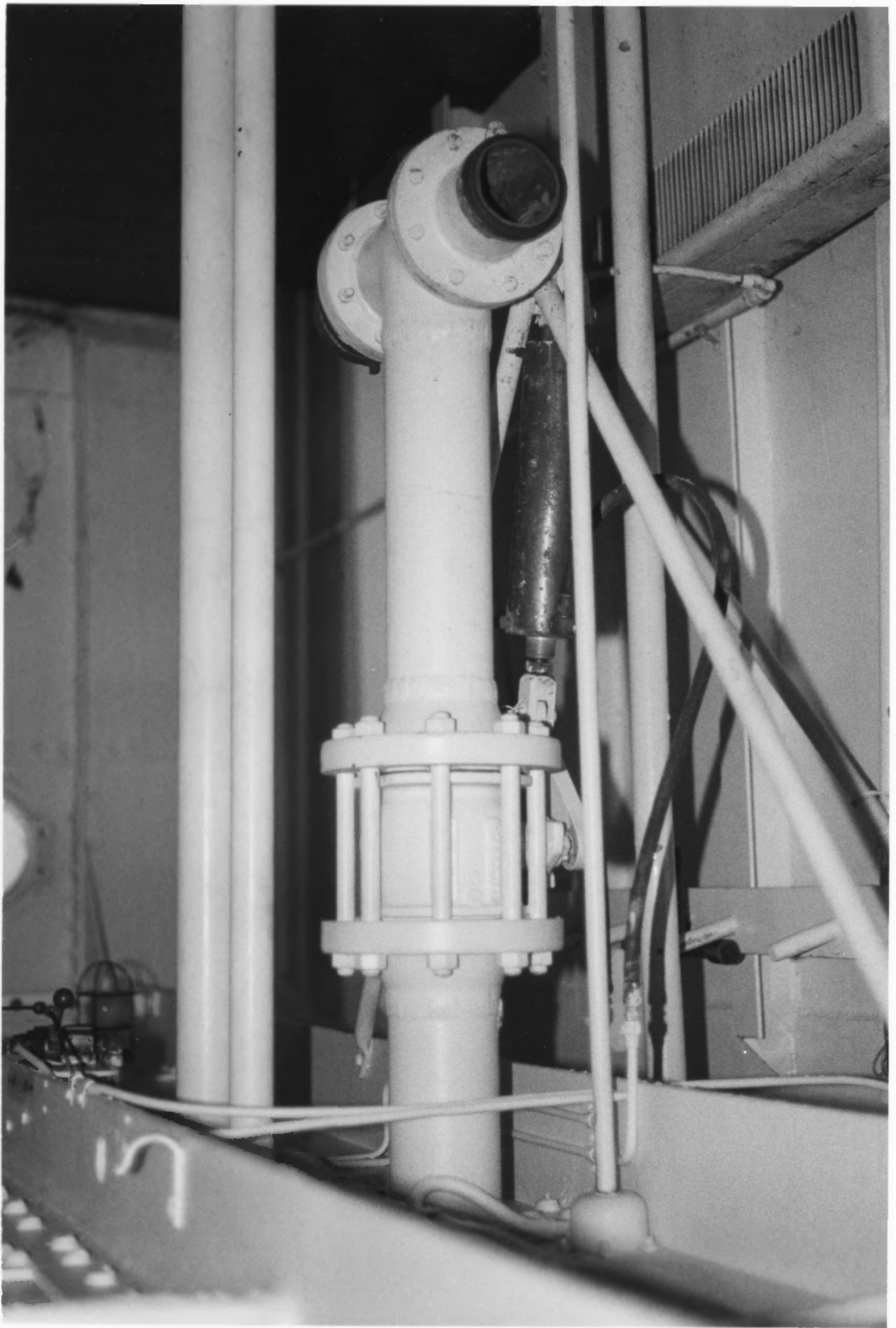


DUWAMISH, Seattle, Washington

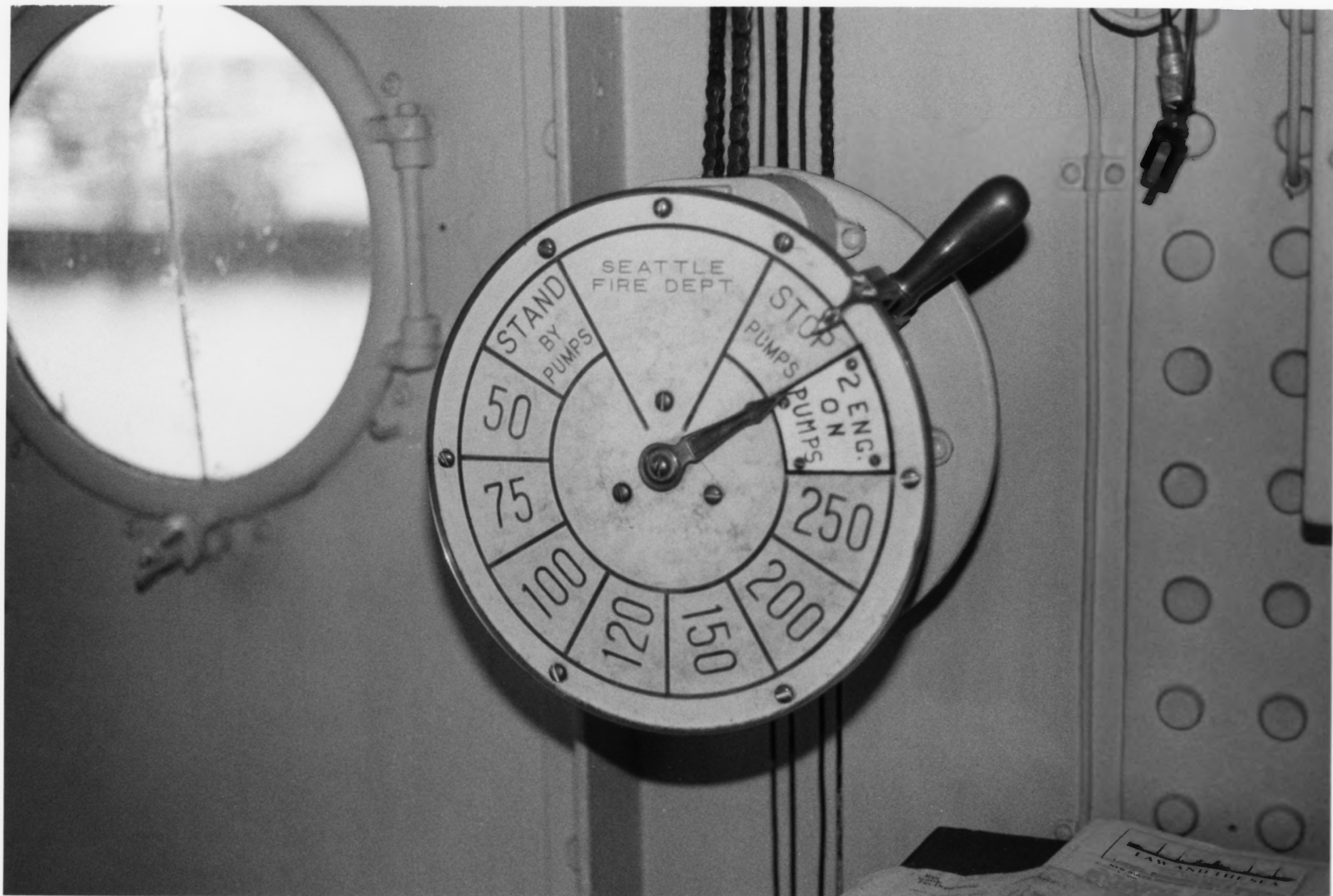
Photo by James P. Delgado, 1988 (NPS)

Seattle Fire Department

Tools in engineroom. Photo #7



DUWAMISH, Seattle, Washington
Photo by James P. Delgado, 1988 (NPS)
Seattle Fire Department
Pumphouse telegraph in wheelhouse.
Photo #8



DUWAMISH, Seattle, Washington
Photo by James P. Delgado, 1988 (NPS)
Seattle Fire Department
Special hydrant in forecandle. Photo #9



FIREBOAT NO. 1, Tacoma, Washington
Washington Historical Society Photo 1929
Tacoma Fire Department
Vessel underway.
Photo #1