



UNIONTOWN H.D.

1. CARR-189 Uniontown Store & P.O.
2. Carroll County, Maryland 3444 U. RD.
3. Joe Getty
4. November 1984
5. Md. Historical Trust, Annapolis, Md.
6. South elevation (camera facing north)
7. 1/1

#1174



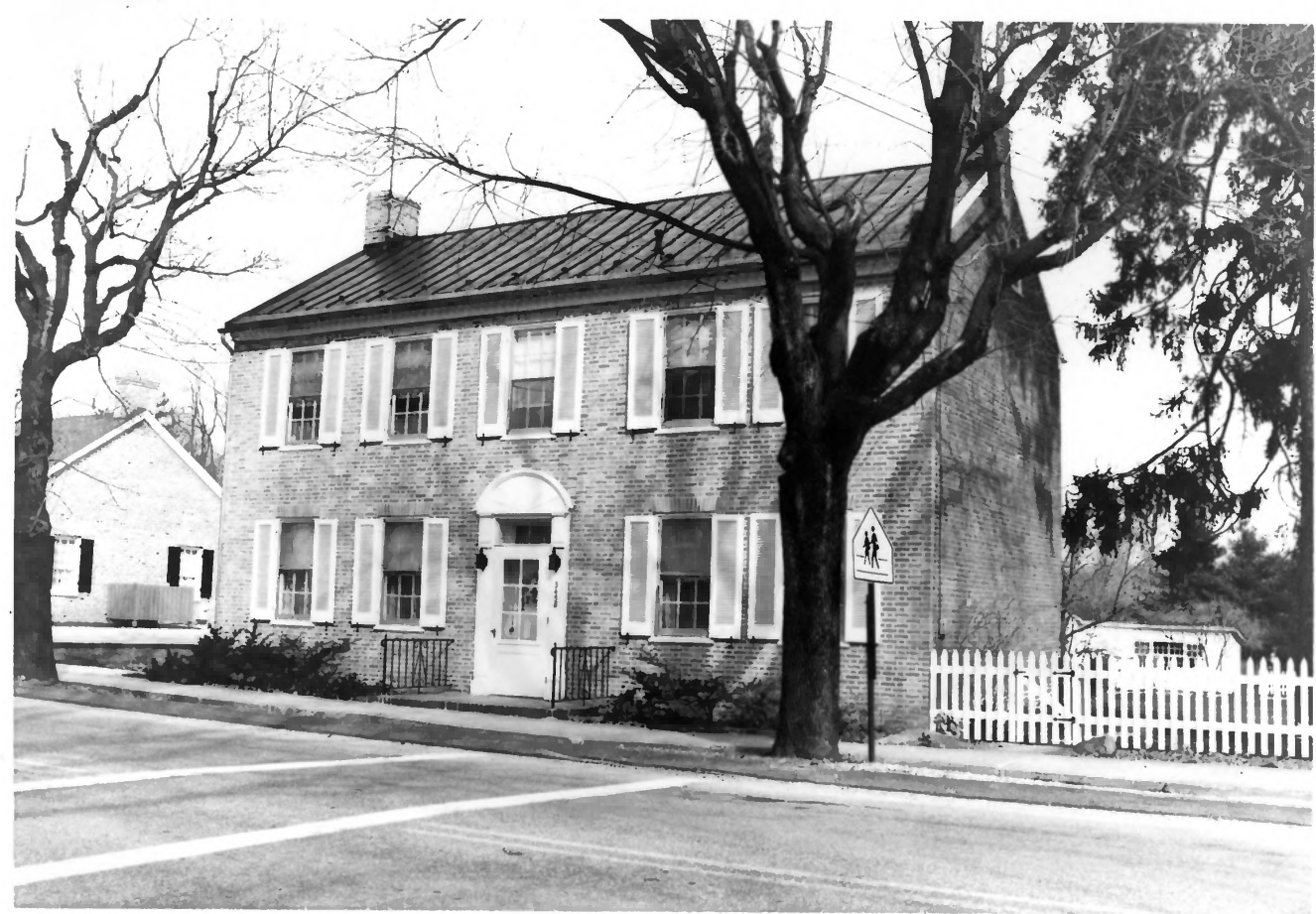
1. CARR-190 David Stouffer House, 3440
2. Carroll County, Maryland U. RD.
3. Joe Getty
4. November 1984
5. Md. Historical Trust, Annapolis, Md.
6. South elevation (camera facing north)
7. 1/1 UNIONTOWN H.D. #2/74



1. CARR-188 James Weller House, 3450 U. RD.
2. Carroll County, Maryland
3. Joe Getty
4. November 1984
5. Md. Historical Trust, Annapolis, Md.
6. South & east elevations (camera facing northwest)
7. 1/1 UNIONTOWN H.D. #3/74



1. CARR-187 Henry Herbaugh House, 3454
2. Carroll County, Maryland U. R.D.
3. Joe Getty
4. November 1984
5. Md. Historical Trust, Annapolis, Md.
6. South & east elevations (camera facing northwest)
7. 1/1 UNIONTOWN H.D. #4/74



1. CARR-186 John Smith House, 3458 U. RD.
2. Carroll County, Maryland
3. Joe Getty
4. November 1984
5. Md. Historical Trust, Annapolis, Md.
6. South & east elevations (camera facing northwest)
7. 1/1 UNIONTOWN H.D. #5/74



1. CARR-185 3462 Uniontown Road
2. Carroll County, Maryland
3. Joe Getty
4. November 1984
5. Md. Historical Trust, Annapolis, Md.
6. South & east elevations (camera facing northwest)
7. 1/2 UNIONTOWN H.D. #6/74



1. CARR-184 Abraham Shriver House, 3468
2. Carroll County, Maryland V. R.D.
3. Joe Getty
4. November 1984
5. Md. Historical Trust, Annapolis, Md.
6. South & east elevations (camera facing northwest)
7. 1/1 UNIONTOWN H.D. #7/74



1. CARR-183 Daniel Cover House, 3472 U. RD.
2. Carroll County, Maryland
3. Joe Getty
4. November 1984
5. Md. Historical Trust, Annapolis, Md.
6. South elevation (camera facing north)
7. 1/1

UNIONTOWN H.D. #8/74



1. CARR-182 Crossed Keys Tavern, 3476 U. RD
2. Carroll County, Maryland
3. Joe Getty
4. November 1984
5. Md. Historical Trust, Annapolis, Md.
6. South elevation (camera facing north)
7. 1/1

UNION TOWN H.D.

#9/74



1. CARR-353 Wm. Hiteshew House, 705
2. Carroll County, Maryland TREVANION
3. Joe Getty RD.
4. November 1984
5. Md. Historical Trust, Annapolis, Md.
6. North & west elevations; camera facing southeast
7. 1/1 UNIONTOWN H.D. #10/74



1. CARR-354 George Slonaker House, 795
2. Carroll County, Maryland
3. Joe Getty
4. November 1984
5. Md. Historical Trust, Annapolis, Md.
6. South & west elevations; camera facing
northeast
7. 1/1 UNIONTOWN H.D. # 11/74



1. CARR-369 Rentzel House, 800 TREVANION
2. Carroll County, Maryland, RD.
3. Joe Getty
4. November 1984
5. Md. Historical Trust, Annapolis, Md.
6. East & south elevations; camera facing northwest
7. 1/1 UNIONTOWN H.D. #12/74

IN
MEMORY
OF

SIVILLA RECK
WIFE OF JOHN RECK
OF JOHN WHO DEPARTED
THIS LIFE MARCH
15TH 1826 AGED 27 YEARS
1 MONTH & 3 DAYS

ALL YOU THAT DO THIS
GRAVE COME PAST THINK ON
THE DEBT YOU WILL PAY
LAST PREPARE YOUR SELVS.
WITH OUT DELAY, WHEN GOD
DOETH CALL WE MUST OBEY.

1. CARR-362 St. Lucas Church Cemetery,
2. Carroll County, Maryland TREVANION
RD.
3. Joe Getty
4. November 1984
5. Md. Historical Trust, Annapolis, Md.
6. Tombstone - 1826
7. 1/1 UNIONTOWN H.D. #13/74



1. CARR-181 3484 Uniontown Road
2. Carroll County, Maryland
3. Joe Getty
4. November 1984
5. Md. Historical Trust, Annapolis, Md.
6. South & west elevations (camera facing northeast)
7. 2/2 UNIONTOWN¹¹ H. D. # 14/74



1. CARR-181 **IORM** Lodge Hall **IORM, 3476**
 2. Carroll County, Maryland **U. RD**
 3. Joe Getty
 4. November 1984
 5. Md. Historical Trust, Annapolis, Md.
 6. South elevation (camera facing north)
 7. 1/2 **#15/74**
- UNIONTOWN N.D.**



1. CARR-180 Nicholas Hiteshew House, 3488
2. Carroll County, Maryland, U. R.D.
3. Joe Getty
4. November 1984
5. Md. Historical Trust, Annapolis, Md.
6. East & south elevations (camera facing northwest)
7. 1/1 UNIONTOWN H.D. #16/74



1. CARR-350 Charles Devilbiss House, 3485
2. Carroll County, Maryland U. Rd.
3. Joe Getty
4. November 1984
5. Md. Historical Trust, Annapolis, Md.
6. East & North elevations, camera facing southwest
7. 1/1 UNIONTOWN H.D. #17/74



1. CARR-349 William Segafoose House, 3481
2. Carroll County, Maryland U. RD.
3. Joe Getty
4. November 1984
5. Md. Historical Trust, Annapolis, Md.
6. North & east elevations; camera facing southwest
7. 1/1 UNIONTOWN H.D. #18/74



1. CARR-348 Uniontown Hotel, 3477 U.R.D.
2. Carroll County, Maryland
3. Joe Getty
4. November 1984
5. Md. Historical Trust, Annapolis, Md.
6. North & east elevations, camera facing southwest
7. 1/1 UNIONTOWN H.D. #19/74



1. CARR-347 John Kurtz House, 3473 U. RD.
2. Carroll County, Maryland
3. Joe Getty
4. November 1984
5. Md. Historical Trust, Annapolis, Md.
6. North elevation, camera facing south
7. 1/1

UNION TOWN H. D. #20/74



1. CARR-346 Jacob R. Thomas House, 3471
2. Carroll County, Maryland U. RD.
3. Joe Getty
4. November 1984
5. Md. Historical Trust, Annapolis, Md.
6. North & west elevation, camera facing
southeast
7. 1/1 UNIONTOWN H.D. #21/74



1. CARR-345 Jonathan Davis House, 3469
2. Carroll County, Maryland U. RD.
3. Joe Getty
4. November 1984
5. Md. Historical Trust, Annapolis, Md.
6. North & east elevations, camera facing southwest
7. 1/1 UNIONTOWN H.D. #22/74



1. CARR-320 Crumbacker/Curry House, 3467
2. Carroll County, Maryland U. RD.
3. Joe Getty
4. November 1984
5. Md. Historical Trust, Annapolis, Md.
6. North & west elevations, camera facing
southeast
7. 1/1 UNIONTOWN H.D. #23/74



5465

1. CARR-319 Crumbacker/Graves House, 3465
2. Carroll County, Maryland U. RD.
3. Joe Getty
4. November 1984
5. Md. Historical Trust, Annapolis, Md.
6. North elevation, camera facing south
7. 1/1

UNIONTOWN

H.D.

24/74



1. CARR-318 John Shriver House, 3463
2. Carroll County, Maryland U. RD.
3. Joe Getty
4. November 1984
5. Md. Historical Trust, Annapolis, Md.
6. North & east elevations, camera facing southwest
7. 1/1 UNIONTOWN H.D. #25/74



1. CARR-316 William A. Anders House, 3451
2. Carroll County, Maryland U. RD.
- 3 Joe Getty
- 4 November 1984
- 5 Md. Historical Trust, Annapolis, Md.
- 6 North & east elevation; camera facing southwest
7. 1/1 UNIONTOWN H.D. #26/74



1. CARR-315 Stephan Bower House Site, 3443
2. Carroll County, Maryland U. RD.
3. Joe Getty
4. November 1984
5. Md. Historical Trust, Annapolis, Md.
6. North & east elevations, camera facing southwest
7. 1/1 UNIONTOWN H.D. #27/74



1. CARR-314 Sarah Herbach House, 3441
2. Carroll County, Maryland U. RD.
3. Joe Getty
4. November 1984
5. Md. Historical Trust, Annapolis, Md.
6. North & east elevations, camera facing southwest
7. 1/1 UNIONTOWN H.D. #28/74



1. CARR-313 Susan Brown House, 3437
2. Carroll County, Maryland U. R. D.
3. Joe Getty
4. November 1984
5. Md. Historical Trust, Annapolis, Md.
6. North elevation, camera facing south
7. 1/1

UNIONTOWN H. D. #29/74



1. CARR-312 Edwin G. Gilbert House, 3435
2. Carroll County, Maryland U. RD.
3. Joe Getty
4. November 1984
5. Md. Historical Trust, Annapolis, Md.
6. North elevation, camera facing south
7. 1/1

UNIONTOWN H.D. #30/74



1. CARR-289 Charles Stevenson House, 3429
2. Carroll County, Maryland U. RD.
3. Joe Getty
4. November 1984
5. Md. Historical Trust, Annapolis, Md.
6. North & east elevations, camera facing southwest
7. 1/1 UNIONTOWN W.D. #31/74



1. CARR-288 Jonas Crumbacker House, 3423
U. RD.
2. Carroll County, Maryland
3. Joe Getty
4. November 1984
5. Md. Historical Trust, Annapolis, Md.
6. North & east elevations, camera facing
northwest
7. 1/1 UNIONTOWN H.D. #32/74



1. CARR-287 Missouri Routson House, 3413
2. Carroll County, Maryland U. RD.
3. Joe Getty
4. November 1984
5. Md. Historical Trust, Annapolis, Md.
6. North & west elevations, camera facing southwest
7. 1/1 UNIONTOWN H.D. #33/74



1. CARR-4 Weaver - Fox House, 3411 U. RD.
2. Carroll County, Maryland
3. Joe Getty
4. November 1984
5. Md. Historical Trust, Annapolis, Md.
6. North elevation (camera facing south)
7. 1/1

UNIONTOWN

H.D.

#34/74



1. CARR-245 Uniontown Methodist Church
2. Carroll County, Maryland
3. Joe Getty
4. November 1984
5. Md. Historical Trust, Annapolis, Md.
6. North & east elevations, camera facing southwest
7. 1/1

35/74



1. CARR-244 Methodist Parsonage, 3403
2. Carroll County, Maryland U. R. D.
3. Joe Getty
4. November 1984
5. Md. Historical Trust, Annapolis, Md.
6. North & east elevations, camera facing southwest
7. 1/1 UNIONTOWN H. D. #36/74



1. CARR-243 David Stem House, 3367 U. RD.
2. Carroll County, Maryland
3. Joe Getty
4. November 1984
5. Md. Historical Trust, Annapolis, Md.
6. East & north elevations, camera facing southwest
7. 1/1 UNIONTOWN H.D. #37/74



1. CARR-235 Henry Guishard House, 3349
2. Carroll County, Maryland U. R.D.
3. Joe Getty
4. November 1984
5. Md. Historical Trust, Annapolis, Md.
6. North & east elevations, camera facing southwest
7. 1/1 UNIONTOWN H.D. #38/74



1. CARR-26 Uniontown Academy
2. Carroll County, Maryland
3. Joe Getty
4. November 1984
5. Md. Historical Trust, Annapolis, Md.
6. North & west elevations (camera facing southeast)
7. 1/1 UNIONTOWN H.D. #39/74



1. CARR-234 Margaret Ferguson House, 3341
2. Carroll County, Maryland U. RD.
3. Joe Getty
4. November 1984
5. Md. Historical Trust, Annapolis, Md.
6. North & west elevations, camera facing southeast
7. 1/1 UNIONTOWN H.D. #40/74



1. CARR-233 Emanuel Formwalt House, 3339
Carroll County, Maryland U. RD.
- 2.
3. Joe Getty
4. November 1984
5. Md. Historical Trust, Annapolis, Md.
6. North & west elevations, camera facing
southeast
7. 1/1 UNIONTOWN H.D. #41/74



1. CARR-232 David Yingling House site,
2. Carroll County, Maryland 3333 U. RD.
3. Joe Getty
4. November 1984
5. Md. Historical Trust, Annapolis, Md.
6. North & west elevations, camera facing southeast
7. 1/1 UNIONTOWN H.D. #42/74



1. CARR-231 Harvey Erb House, 3329 U. RD.
2. Carroll County, Maryland
3. Joe Getty
4. November 1984
5. Md. Historical Trust, Annapolis, Md.
6. North & east elevation, camera facing southwest
7. 1/1 UNIONTOWN H.D. #43/74



1. CARR-230 Ella May Will House, 3325
2. Carroll County, Maryland U. RD.
3. Joe Getty
4. November 1984
5. Md. Historical Trust, Annapolis, Md.
6. North & east elevations, camera facing southwest
7. 1/1 UNIONTOWN H.D. #44/74



1. CARR-229 James M. Slemmons House, 3321
2. Carroll County, Maryland, U. RD.
3. Joe Getty
4. November 1984
5. Md. Historical Trust, Annapolis, Md.
6. North and east elevations
7. 1/1

UNIONTOWN H. D. #45/74



1. CARR-228 Samuel Brown House, 3317
2. Carroll County, Maryland U. R. D.
3. Joe Getty
4. November 1984
5. Md. Historical Trust, Annapolis, Md.
6. North & east elevations, camera facing southwest
7. 1/1 UNIONTOWN H. D. #46/74



1. CARR-227 Anna Hays House, 3313 U.R.D.
2. Carroll County, Maryland
3. Joe Getty
4. November 1984
5. Md. Historical Trust, Annapolis, Md.
6. North & west elevations, camera facing southeast
7. 1/1 UNIONTOWN H.D. #47/74



1. CARR-226 Dennis Chase House, 3309 U. RD.
2. Carroll County, Maryland
3. Joe Getty
4. November 1984
5. Md. Historical Trust, Annapolis, Md.
6. North & East elevation, camera facing southwest.
7. 1/1 UNIONTOWN H.D. ~~48~~ #48/74



1. CARR-225 John B. Williams House, 3201
2. Carroll County, Maryland U.R.D.
3. Joe Getty
4. November 1984
5. Md. Historical Trust, Annapolis, Md.
6. North elevation
7. 1/1

UNIONTOWN H.D. #49/74



1. CARR-224 Jacob Smith House, 3204
2. Carroll County, Maryland U. RD.
3. Joe Getty
4. November 1984
5. Md. Historical Trust, Annapolis, Md.
6. South elevation (camera facing north)
7. 1/1

UNIONTOWN H.D. #50/74



1. CARR-223 William Smith House, 3208
2. Carroll County, Maryland U. R. D.
3. Joe Getty
4. November 1984
5. Md. Historical Trust, Annapolis, Md.
6. South and east elevations (camera facing northwest)
7. 1/1 UNIONTOWN H.D. #51/74



1. CARR-222 Charles Haines House, 3212
2. Carroll County, Maryland U. RD.
3. Joe Getty
4. November 1984
5. Md. Historical Trust, Annapolis, Md.
6. South & east elevation (camera facing northwest)
7. 1/2 UNIONTOWN H.D. #52/74



1. CARR-222 Charles Haines House, 3212
2. Carroll County, Maryland U. R. D.
3. Joe Getty
4. November 1984
5. Md. Historical Trust, Annapolis, Md.
6. Adjoining building - southeast elevation
7. 2/2

UNIONTOWN H. D. #53/74



1. CARR-221 Henrietta Dugan House, 3216
2. Carroll County, Maryland U. R. D.
3. Joe Getty
4. November 1984
5. Md. Historical Trust, Annapolis, Md.
6. South & east elevations (camera facing northwest)
7. 1/1. UNIONTOWN H.D. #54/74



1. CARR-220 William Thomas House, 3300 U. RD.
2. Carroll County, Maryland
3. Joe Getty
4. November 1984
5. Md. Historical Trust
6. South & east elevations (camera facing northwest)
7. 1/1 UNIONTOWN H.D. #55/74



1. CARR-219 John W. Ferguson House, 3304
2. Carroll County, Maryland U. RD.
3. Joe Getty
4. November 1984
5. Md. Historical Trust, Annapolis, Md.
6. South & east elevations (camera facing northwest)
7. 1/1 UNIONTOWN H.D. #56/74



1. CARR-218 - Tollgate House, 3310 U. RD.
2. Carroll County, Maryland
3. Joe Getty
4. November 1984
5. Md. Historical Trust, Annapolis, Md.
6. South & east elevations (camera facing northwest)
7. 1/1 UNIONTOWN H.D. #57/74



1. CARR-217 St. Paul's Lutheran Church
2. Carroll County, Maryland
3. Joe Getty
4. November 1984
5. Md. Historical Trust, Annapolis, Md.
6. South & east elevations (camera facing northwest)
7. 1/1 UNIONTOWN H.D. #58/74



1. CARR-216 Lutheran Parsonage, 3332 U. RD.
2. Carroll County, Maryland
3. Joe Getty
4. November 1984
5. Md. Historical Trust, Annapolis, Md.
6. South & west elevation (camera facing northeast)
7. 1/1 UNIONTOWN H.D. #59/74



1. CARR-215 Jacob Royer House, 3336 U. RD.
2. Carroll County, Maryland
3. Joe Getty
4. November 1984
5. Md. Historical Trust, Annapolis, Md.
6. South & east elevations (camera facing northwest)
7. 1/1 UNIONTOWN H.D. #60/74



1. CARR-214 Daniel Sullivan House, 3348
2. Carroll County, Maryland U. RD.
3. Joe Getty
4. November 1984
5. Md. Historical Trust, Annapolis, Md.
6. South elevation (camera facing north)
7. 1/1

UNION TOWN H.D. #61/74



1. CARR-212 Lewis Myers House, 3352 U.R.D.
2. Carroll County, Maryland
3. Joe Getty
4. November 1984
5. Md. Historical Trust, Annapolis, Md.
6. South & west elevations (camera facing northeast)
7. 1/1 UNIONTOWN H.D. #62/74



1. CARR-211 Beam House, 3358 U. RD.
2. Carroll County, Maryland
3. Joe Getty
4. November 1984
5. Md. Historical Trust, Annapolis, Md.
6. South & west elevation (camera facing northeast)
7. 1/1 UNIONTOWN H.D. #63/74



1. CARR-209 Robert Dods House, 3364 U. RD.
2. Carroll County, Maryland
3. Joe Getty
4. November 1984
5. Md. Historical Trust, Annapolis, Md.
6. South & west elevation (camera facing northeast)
7. 1/1 UNIONTOWN H.D. #64/74



1. CARR-208 John Hyder House, 3400 U. RD.
2. Carroll County, Maryland
3. Joe Getty
4. November 1984
5. Md. Historical Trust, Annapolis, Md.
6. South & west elevation (camera facing northeast)
7. 1/1 UNIONTOWN H.D. #65/74



1. CARR-207 Dr. J. J. Weaver, Sr., House,
2. Carroll County, Maryland 3406 U. RD.
3. Joe Getty
4. November 1984
5. Md. Historical Trust, Annapolis, Md.
6. South elevation (camera facing north)
7. 1/1

UNIONTOWN H.D. #66/74



1. CARR-198 Jacob Appller, Sr., House, 3412
2. Carroll County, Maryland U. RD.
3. Joe Getty
4. November 1984
5. Md. Historical Trust, Annapolis, Md.
6. South elevation (camera facing north)
7. 1/1

UNIONTOWN H.D. #67/74



1. CARR-197 Dr. Charles Hubbs House, 3416
2. Carroll County, Maryland U. RD.
3. Joe Getty
4. November 1984
5. Md. Historical Trust, Annapolis, Md.
6. South & east elevations (camera facing northwest)
7. 1/1 UNIONTOWN H.D. #68/74



1. CARR-196 Christian Hershberger House
2. Carroll County, Maryland 3420 U. RD.
3. Joe Getty
4. November 1984
5. Md. Historical Trust, Annapolis, Md.
6. South & east elevations (camera facing northwest)
7. 1/1 UNIONTOWN H.D. #69/74



1. CARR-195 1907 Uniontown Bank
2. Carroll County, Maryland
3. Joe Getty
4. November 1984
5. Md. Historical Trust, Annapolis, Md.
6. South & east elevations (camera facing northwest)
7. 1/1 UNIONTOWN H.D. #70/74



1. CARR-194 Dr. Luther Kemp House, 3428
2. Carroll County, Maryland U.R.D.
3. Joe Getty
4. November 1984
5. Md. Historical Trust, Annapolis, Md.
6. South & west elevations (camera facing
7. 1/1

UNIONTOWN N.D. # 71/74



1. CARR-193 John Gore House, 3432 U. RD.
2. Carroll County, Maryland
3. Joe Getty
4. November 1984
5. Md. Historical Trust, Annapolis, Md.
6. South & east elevations (camera facing northwest)
7. 1/1 UNIONTOWN H.D. #72/74



1. CARR-192 Isaiah Pearce House, 3434
2. Carroll County, Maryland U. R. D.
3. Joe Getty
4. November 1984
5. Md. Historical Trust, Annapolis, Md.
6. South elevation (camera facing north)
7. 1/1

UNIONTOWN N.D. #73/74



1. CARR-191 Reuben Gist House, 3436 U. RD.
2. Carroll County, Maryland
3. Joe Getty
4. November 1984
5. Md. Historical Trust, Annapolis, Md.
6. South elevation (camera facing north)
7. 1/1

UNIONTOWN N. D.

#74/74