

**United States Department of the Interior
National Park Service**

**National Register of Historic Places
Continuation Sheet**

Section number _____ Page _____

SUPPLEMENTARY LISTING RECORD

NRIS Reference Number: 05000303

Date of Listing: April 20, 2005

Property Name: West End Hills Missionary Baptist Church

County: Jefferson

State: Alabama

The Civil Rights Movement in Birmingham, Alabama, 1933-1979
Multiple Name

This property is listed in the National Register of Historic Places in accordance with the attached nomination documentation subject to the following exceptions, exclusions, or amendments, notwithstanding the National Park Service certification included in the nomination documentation.

for Daniel J. Viana
Signature of the Keeper

April 20, 2005
Date of Action

Amended Items in Nomination:

Section 8. Statement of Significance

The period of significance is hereby changed to 1959-ca. 1967 to more accurately reflect the period in which the church and its congregation played an important role in the Civil Rights movement in Birmingham.

This change was discussed with and approved by the National Register staff of the Alabama SHPO.

The Alabama State Historic Preservation Office was notified of this amendment.

DISTRIBUTION:

- National Register property file**
- Nominating Authority (without nomination attachment)**

United States Department of the Interior
National Park Service

National Register of Historic Places Registration Form

This form is for use in nominating or requesting determinations for individual properties and districts. See instructions in *How to Complete the National Register of Historic Places Registration Form* (National Register Bulletin 16A). Complete each item by marking "x" in the appropriate box or by entering the information requested. If an item does not apply to the property being documented, enter "N/A" for "not applicable." For functions, architectural classification, materials, and areas of significance, enter only categories and subcategories from the instructions. Place additional entries and narrative items on continuation sheets (NPS Form 10-900a). Use a typewriter, word processor, or computer, to complete all items.

1. Name of Property

historic name West End Hills Missionary Baptist Church

other names/site number N/A

2. Location

street & number 1680 19th Place S.W.

N/A not for publication

city or town Birmingham

N/A vicinity

state Alabama

code AL

county Jefferson

code 073

zip code 35211

3. State/Federal Agency Certification

As the designated authority under the National Historic Preservation Act, as amended, I hereby certify that this nomination request for determination of eligibility meets the documentation standards for registering properties in the National Register of Historic Places and meets the procedural and professional requirements set for in 36 CFR Part 60. In my opinion, the property meets does not meet the National Register criteria. I recommend that this property be considered significant nationally statewide locally. (See continuation sheet for additional comments.)

[Signature]
Signature of certifying official/Title

March 3, 2005
Date

State Historic Preservation Office, Alabama Historical Commission

State or Federal agency and bureau

In my opinion, the property meets does not meet the National Register criteria. (See Continuation sheet for additional comments.)

Signature of certifying official/Title

Date

State or Federal agency and bureau

4. National Park Service Certification

I hereby certify that the property is:

entered in the National Register.

See continuation sheet

determined eligible for the National Register.

See continuation sheet

determined not eligible for the National Register.

removed from the National Register.

other,

(explain.)

for Signature of the Keeper

Date of Action

Daniel J. Visser 4/20/05

West End Hills Missionary Baptist Church

Name of Property

Jefferson County, Alabama

County and State

5. Classification

Ownership of Property

(Check as many boxes as apply)

- private, public-local, public-State, public-Federal

Category of Property

(Check only one box)

- building(s), district, site, structure, object

Number of Resources within Property

(Do not include previously listed resources in count.)

Table with columns: Contributing, Noncontributing, buildings, sites, structures, objects, Total. Values: Contributing=1, Noncontributing=0, Total=1.

Name of related multiple property listing

(Enter "N/A" if property is not part of a multiple property listing.)

Birmingham Civil Rights Movement, 1933-1979 MPS

Number of Contributing resources previously listed in the National Register

0

6. Function or Use

Historic Functions

(Enter categories from instructions)

RELIGIOUS: church

Current Functions

(Enter categories from instructions)

RELIGIOUS: church

7. Description

Architectural Classification

(Enter categories from instructions)

Colonial Revival

Materials

(Enter categories from instructions)

foundation Brick; Concrete

walls Brick

roof Asphalt Shingle

other Metal; Wood; Glass

Narrative Description

(Describe the historic and current condition of the property on one or more continuation sheets.)

See continuation sheets.

West End Hills Missionary Baptist Church

Jefferson County, Alabama

Name of Property

County and State

8. Statement of Significance

Applicable National Register Criteria

(Mark "x" in one or more boxes for the criteria qualifying the property for National Register listing.)

- Criteria A, B, C with checkboxes and descriptions.

Areas of Significance

(Enter categories from instructions)

Social History
Ethnic Heritage: African American

Period of Significance

1959-1967

Significant Dates

1963, 1965

Significant Person

(Complete if Criterion B is marked)
N/A

Cultural Affiliation

N/A

Architect/Builder

N/A

- Criteria D with checkbox and description.

Criteria Considerations

(Mark "x" in all the boxes that apply.)

Property is:

- Criteria A-G with checkboxes and descriptions.

Narrative Statement of Significance

(Explain the significance of the property on one or more continuation sheets.)

9. Major Bibliographical References

Bibliography

(Cite the books, articles, and other sources used in preparing this form on one or more continuation sheets.)

Previous documentation on file (NPS): N/A

- Documentation checkboxes: preliminary determination, previously listed, designated landmark, recorded by Historic American Buildings Survey, recorded by Historic American Engineering Record.

Primary location of additional data:

- Location checkboxes: State Historic Preservation Office, Other State Agency, Federal Agency, Local Government, University, Other.

Name of repository: Birmingham Historical Society, Birmingham Public Library; Birmingham Civil Rights Institute

West End Hills Missionary Baptist Church

Jefferson County, Alabama

Name of Property

County and State

10. Geographical Data

Acreage of Property Approximately one acre

UTM References

(Place additional UTM references on a continuation sheet.)

1	<u>16</u>	<u>512120</u>	<u>3703180</u>	3	<u> </u>	<u> </u>	<u> </u>
	Zone	Easting	Northing		Zone	Easting	Northing
2	<u> </u>	<u> </u>	<u> </u>	4	<u> </u>	<u> </u>	<u> </u>
					<input type="checkbox"/>	See continuation sheet	

Verbal Boundary Description

(Describe the boundaries of the property on a continuation sheet.)

Boundary Justification

(Explain why the boundaries were selected on a continuation sheet.)

11. Form Prepared By

name/title Carroll Van West, with earlier material by Linda Nelson and Marjorie White
organization Center for Historic Preservation date March 22, 2004
street & number Middle Tennessee State University—Box 80 telephone 615-898-2947
city or town Murfreesboro state TN zip code 37132

Additional Documentation

Submit the following items with the completed form:

Continuation Sheets

Maps

- A **USGS map** (7.5 or 15 minute series) indicating the property's location
- A **Sketch map** for historic districts and properties having large acreage or numerous resources.

Photographs

Representative **black and white photographs** of the property.

Additional items

(Check with the SHPO or FPO for any additional items.)

Property Owner

(Complete this item at the request of SHPO or FPO.)

name West End Hills Missionary Baptist Church (Rev. W. J. Jackson)
street & number 1680 19th Place S.W. telephone 205-923-5347
city Birmingham state Alabama zip code 35211

Paperwork Reduction Act Statement: This information is being collected for applications to the National Register of Historic Places to nominate properties for listing or determine eligibility for listing, to list properties, and to amend existing listing. Response to this request is required to obtain a benefit in accordance with the National Historic Preservation Act, as amended (16 U.S.C. 470 *et seq.*)

Estimated Burden Statement: Public reporting burden for this form is estimated to average 18.1 hours per response including time for reviewing instructions, gathering and maintaining data, and completing and reviewing the form. Direct comments regarding this burden estimate or any aspect of this form to the Chief, Administrative Services Division, National Park Service, P. O. Box 37127, Washington, DC 20013-7127; and the Office of Management and Budget, Paperwork Reductions Projects (1024-0018), Washington, DC 20303.

United States Department of the Interior
National Park Service
National Register of Historic Places
Continuation Sheet

7

Page

1West End Hills Missionary Baptist Church, Jefferson
County, AL

VII. Description

West End Hills Missionary Baptist Church, built in stages between 1959 and 1965, is at 1680 19th Place S.W. in a small 1950s and 1960s working-class neighborhood on the southwest outskirts of Birmingham. It is a one-story brick veneer building, Colonial Revival in style, which rests on a brick and concrete basement. It has an asphalt shingle gable roof and is surrounded by a large asphalt parking lot.

The east facade has a single bay, composed of a shallow projecting gabled portico with pediment on wrought iron post supports, over two sets of double metal doors with translucent glass and large plate overlights. The door bays are defined by slim setback piers, the only really decorative element in an otherwise austere façade. A ghost from an earlier, steeper pediment is above the present one, but church members do not recall when the earlier pediment was replaced. There are eight concrete steps up to the front porch, with metal rails on the side and a metal rail in the center, dividing the dual entrances. A handicap accessible ramp with an iron railing, c. 1990, reaches the porch from the south side. There are an octagonal belfry, lantern and pointed spire on the front roofbeam, the exterior's best example of Colonial Revival style.

The south elevation contains nine rectangular metal-frame translucent jalousie windows, seven of them serving the sanctuary and all but the front one in bays defined by small capped buttresses; all windows have concrete sills. The basement level contains smaller windows in every other bay (except bay 9, which is blind), with metal mesh screens over them. This elevation is also where the handicap access ramp begins, between bays 5 and 6.

The north elevation is similar to the south.

The west (rear) elevation has six asymmetrical bays. On the basement level, metal doors are at the northwest and southwest corners. Between the two doors are three metal-framed fixed windows. Halfway above the southwest door is a wood-frame one-over-one window. On the sanctuary level, in the middle of the wall, are two rectangular metal-frame translucent jalousie windows. At the gable point is a rectangular metal ventilation grille. Two brick stacks, with minimal buttresses, are symmetrically placed offset the gable peak.

The vestibule contains restrooms on either side of the hallway and a set of stairs to the basement. The sanctuary is entered by wooden double-doors and it strongly retains its early 1960s appearance in the arrangement of the pews in auditorium style, its furniture, its pulpit, its wood wainscoting, its drywall walls and lay-in acoustical tile ceiling, its frosted lantern light fixtures, and its concrete floor, which is covered in carpet. The ceiling angles down to the eave lines from the aisle lines, and is covered in stamped acoustical tiles with cylindrical suspended fixtures and some ceiling-mounted fixtures nearer the dais. There is no balcony, and the rear sanctuary wall is unbroken except for the central double doors from the vestibule. There are three sections of pews served by two aisles, the center section the wider. In a typical arrangement, the dais and choir are in a narrower chancel created by the side walls of rear anterooms, of which the north one is the pastor's office. The pulpit is central with five chairs for the clergy. The three-row choir section is fitted with theatre seats. The rear wall is curtained, but the baptistery itself is underneath the pulpit.

The basement, finished in 1959, was the original church sanctuary while the remainder of the building was constructed in the early 1960s. It has a central kitchen on the southern end, then a large open space that support posts divide into three sections. Restrooms also are located in the basement.

West End Hills Missionary Baptist Church meets the registration requirements for church buildings listed in the Civil Rights Movement in Birmingham, 1933-1979 MPS. It retains a high degree of integrity in setting, location, design, materials, workmanship, and association. Other elements of the church's original design, materials, and craftsmanship remain in the extant pulpit furniture and the pews.

Archaeological Component

Although no formal archaeological testing has been conducted, the potential for subsurface materials remains.

United States Department of the Interior
National Park Service
National Register of Historic Places
Continuation Sheet

8

Page

2

West End Hills Missionary Baptist Church, Jefferson
County, AL

VIII. Significance

Organized in 1921 as the Collage [sic] Park Church, the West End Hills Missionary Baptist Church has been a southwest Birmingham fixture since the late 1950s. The church is eligible for listing in the National Register of Historic Places under Criterion A, as one of the churches involved in the Alabama Christian Movement for Human Rights in the Civil Rights era. It meets the registration requirements for Criterion A as found in the Birmingham's Civil Rights Movement, 1933-1979 MPS.

Rev. H. B. Brown, head of the Collage Park Church trustees, purchased the present lot from the West Hills, Inc., in 1947. It was over ten years, however, before the congregation moved to its new location and began holding worship services. The congregation initially met in a tent at this location, then in 1959 it began the construction of a full basement, under the direction of Rev. Coleman M. Smith. Once the basement was completed, it was fitted with a flat roof and the congregation began using it immediately in late 1959. Here is where they met, held services, and hosted Civil Rights events as they also raised the funds to complete the building with a stylish sanctuary. The sanctuary was not substantially complete until late 1964 and was dedicated on May 31, 1965. By this time Henry Crumpton was the chairman of the Board of Deacons while Wilmer Jackson was chairman of the Board of Trustees.

West End Hills Missionary Baptist Church is an outstanding example of the smaller, working-class based congregations that supported the Alabama Christian Movement for Human Rights from 1959 to 1965. Many members of the congregation regularly attended and participated in ACMHR meetings. While the unassuming church was too small to host a regular ACMHR meeting, congregation members, guided by Rev. Coleman M. Smith, met here and planned how they would participate in the mass demonstrations of Project C in the spring of 1963. The strategy sessions also were important tools of oral communication for a society that had few other public options, since open discussion of civil rights strategies over the airwaves or in print could provoke severe reactions from white extremists. Furthermore, activists knew that to reach the core working-class residents of their neighborhoods, meetings in the churches were much more effective venues than print or electronic media. It was thus at the churches where activists relayed the important messages and key strategies to be debated and carried out. The churches were safe havens in an often hostile environment.

Rev. Coleman M. Smith had been an active member of the Alabama Christian Movement for Human Rights. According to church member and deacon, Mark Jackson, several members participated in the Project C marches of 1963. According to an interview with Rev. W. J. Jackson, who became the pastor in 1967, the church was the location of meetings about the implementation of the Civil Rights Act of 1964 and the Voting Rights Act of 1965. Voter registration workshops, guided by the Southern Christian Leadership Conference, the NAACP, and the Southern Conference Educational Fund, took place at the church during the mid- to late 1960s. Rev. Jackson currently serves on the board of the National Association of Christian Educators.

West End Hills Missionary Baptist Church meets the registration requirements for Criterion A as listed in the Birmingham's Civil Rights Movement, 1933-1979 MPS. The church was an important strategy center and source of activism in the southwest African-American neighborhoods of Birmingham.

United States Department of the Interior
National Park Service
National Register of Historic Places
Continuation Sheet

West End Hills Missionary Baptist Church, Jefferson
County, AL

9, 10

Page

3

IX. Bibliography

Birmingham City Directories, 1959-1966.

Fieldwork notes. July 23, 2003. In possession of author.

Hendricks, Lola. Interviews with Marjorie L. White. 1999. Birmingham Historical Society.

Jackson, Mark. Interview. July 23, 2003. Notes in possession of author.

Jackson, Rev. W. J. Interview. July 23, 2003. Notes in possession of author.

West End Hills Missionary Baptist Church Files, Birmingham Historical Society Civil Rights Collection-Alabama Christian Movement for Human Rights and Civil Rights Churches Files, Birmingham Historical Society, Birmingham, Alabama. Files include Board of Equalization Records, City Directory Trace, and Photographs.

White, Marjorie L., *A Walk to Freedom-The Reverend Fred Shuttlesworth and the Alabama Movement for Human Rights*. Birmingham: Birmingham Historical Society, 1998.

X. Verbal Boundary Description and Justification

The nominated boundaries of West End Hills Missionary Baptist Church at 1680 19th Place S. W. are represented by Lots 1-3, block 5 of West End Hills as indicated on the attached Jefferson County Tax Map 01-29-17-4, Sections SE ¼ 17, Township 18 South, Range 3 West. The boundaries contain all of the historic property significantly associated with the West End Hills Missionary Baptist Church.

United States Department of the Interior
National Park Service
National Register of Historic Places
Continuation Sheet

West End Hills Missionary Baptist Church, Jefferson
County, AL

Photographs Page

4

West End Hills Missionary Baptist Church
Birmingham, Jefferson Co., AL
Photographs by: Carroll Van West
MTSU Center for Historic Preservation
July 2003

East façade, facing west
1 of 9

Church sign and east façade, facing northwest
2 of 9

West elevation and north elevation, facing southeast
3 of 9

South elevation, facing north
4 of 9

Sanctuary, facing west
5 of 9

Pulpit, facing northwest
6 of 9

Sanctuary, facing northeast
7 of 9

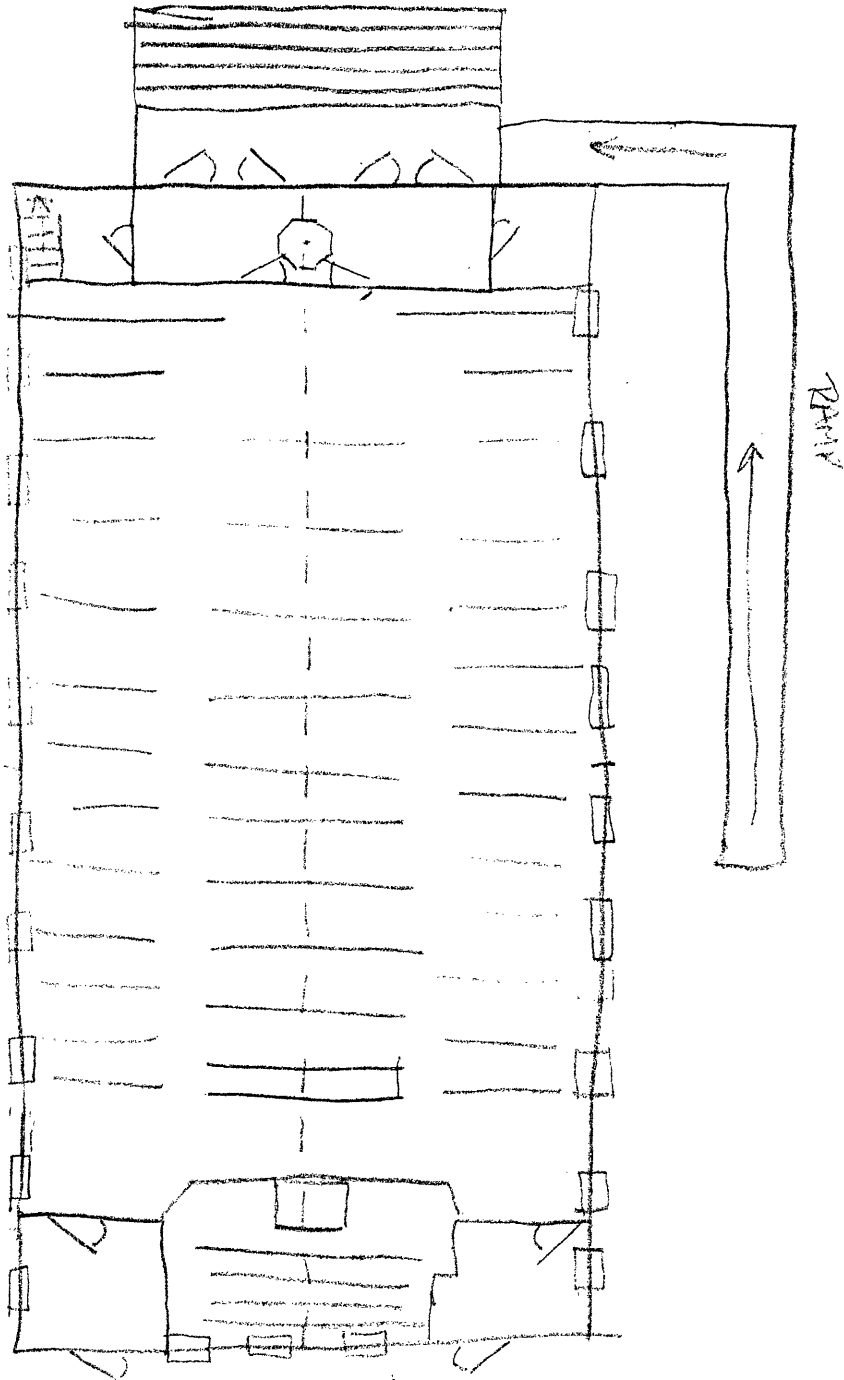
Sanctuary, facing southeast
8 of 9

Pulpit and sanctuary, facing west
9 of 9

West End Hills Missionary Baptist Church
1680 19th Place, S.W., Birmingham



POULSON R



N →
NTS:2003