



Newark City Hall

Richard Rozewski

Negative in Newark Engineering Office  
June, 1976

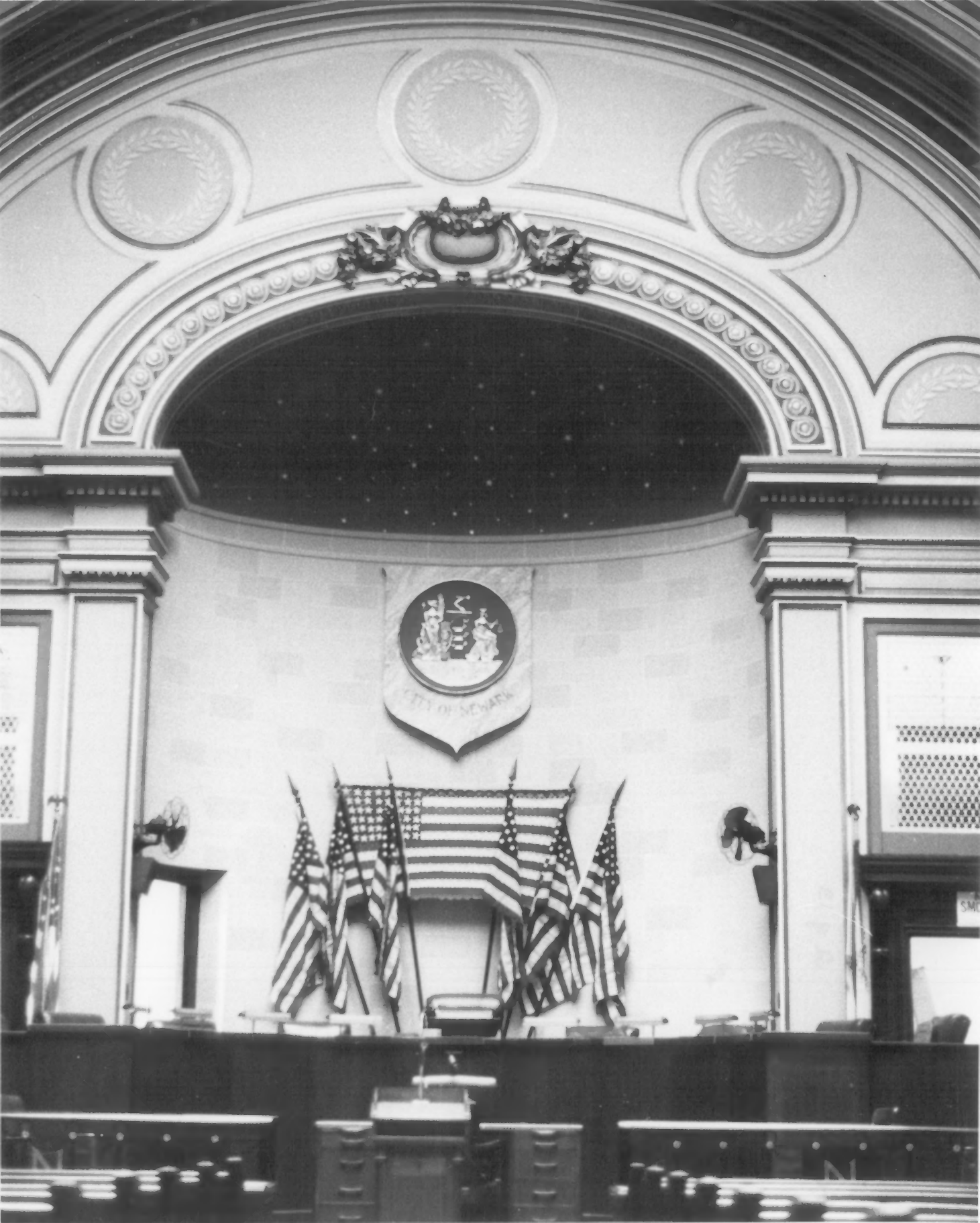
North well arcades

FEB 17 1978

SEP 21 1977

*Essex County*

*1 of 13*



Newark City Hall

Richard Rozewski

Negative in Newark Engineering Office

June, 1976

Detail-Council chamber rostrum and center  
arcade

SEP 21 1977

FEB 17 1978

Essex County

2 4 13



Newark City Hall

FEB 17 1978

Richard Rozewski

Negative in Newark Engineering Office

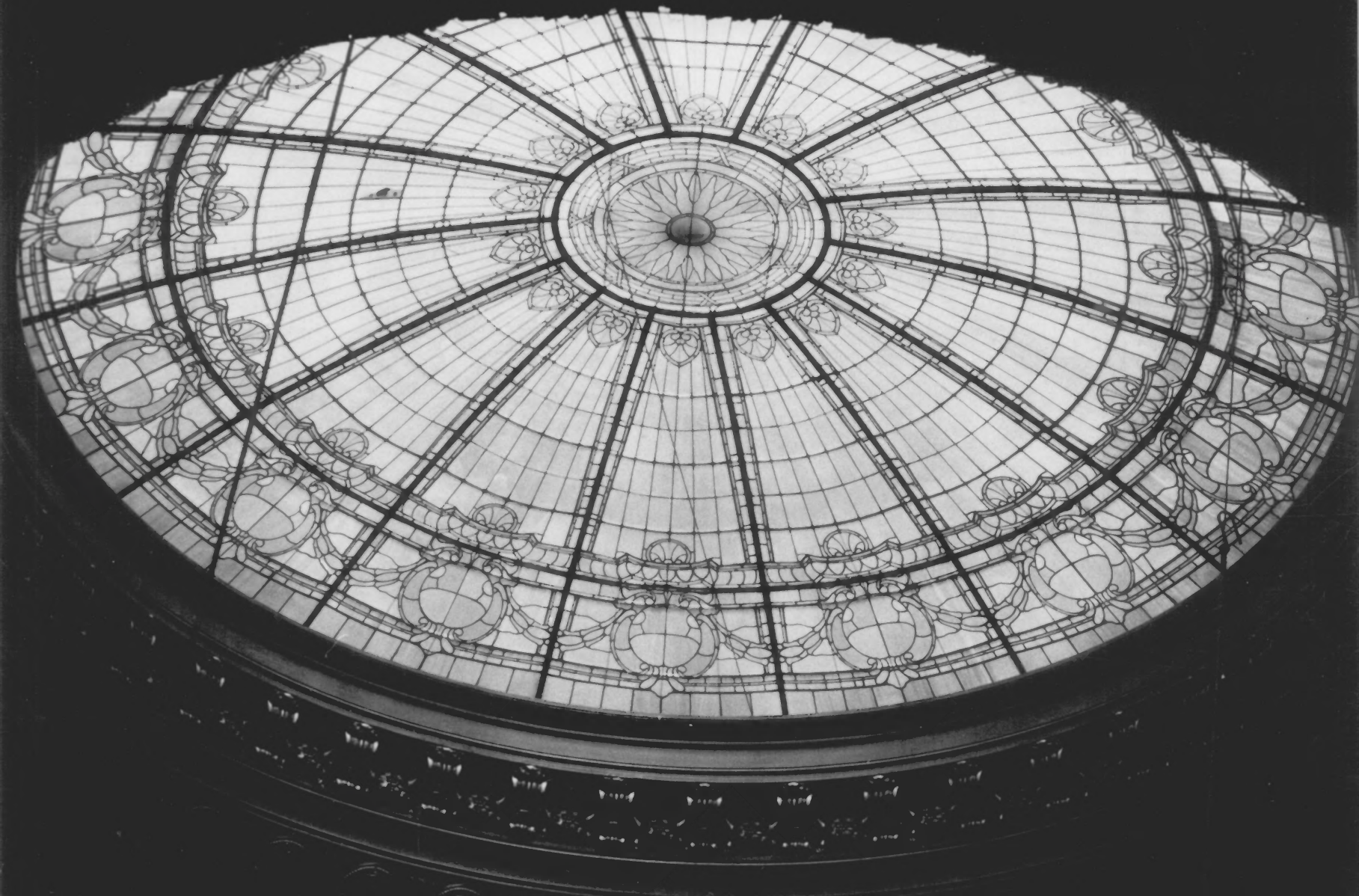
June, 1976

Detail - Rotunda pendentive

SEP 21 1977

Essex County

3 of 13



Newark City Hall

FEB 17 1978

Richard Rozewski

Negative in Newark Engineering Office

June, 1976

Rotunda skylight

SEP 21 1977

Essex County

4 of 13





Newark City Hall

Richard Rozewski

Negative in Newark Engineering Office

June, 1976

Divided main stair

SEP 21 1977

FEB 17 1978

Essex County

5 of 13



CITY HALL

FEB 17 1978

Newark City Hall

Richard Rozewski

Negative in Newark Engineering Office

June, 1976

SEP 21 1977

Detail - Entrance Portals

Essex County

6 9 13



Newark City Hall

Richard Rozewski

Negative in Newark Engineering Office  
June, 1976

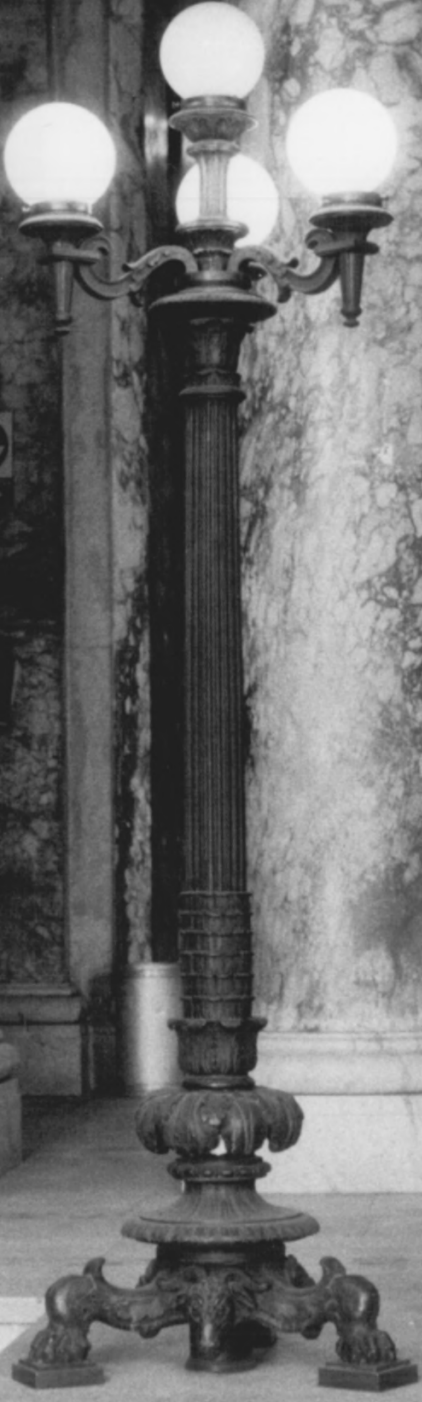
West elevation - detail

FEB 17 1978

SEP 21 1977

Essex County

7813



SCOUT  
LOOK UP

Newark City Hall

SEP 21 1977

Richard Rozewski

Negative in Newark Engineering Office

June, 1976

Detail - Entrance lobby lamp standard

---

ESSEX County

FEB 17 1978

8 of 13





Newark City Hall

SEP 21 1977

Richard Rozewski

Negative in Newark Engineering Office

June, 1976

West elevation (Broad Street) FEB 17 1978

**ESSEX** County

9813



FALLOUT SHELTER

Newark City Hall

SEP 21 1977

Richard Rozewski

Negative in Newark Engineering Office

June, 1976

Detail - side entrance (Franklin Street)

**Essex County**

FEB 17 1978

10 g 13



Newark City Hall

FEB 17 1978

Richard Rozewski

Negative in Newark Engineering Office  
June, 1976

Frescoes - North Wall

SEP 21 1977

---

Essex County

11 of 13



Newark City Hall FEB 17 1978

Richard Rozewski SEP 21 1977

Negative in Newark Engineering Office  
June, 1976

Detail - Composite entablature

**Essex County**

**12813**





Newark City Hall

Richard Rozewski

Negative in Newark Engineering Office

June, 1976

Detail - Bronze Lamp Standard

SEP 21 1977

FEB 17 1978

Essex County

13 of 13