

RECEIVED 2280

MAR 08 2013

192

National Register of Historic Places Registration Form

This form is for use in nominating or requesting determinations for individual properties and districts. See instructions in National Register Bulletin, *How to Complete the National Register of Historic Places Registration Form*. If any item does not apply to the property being documented, enter "N/A" for "not applicable." For functions, architectural classification, materials, and areas of significance, enter only categories and subcategories from the instructions. Place additional certification comments, entries, and narrative items on continuation sheets if needed (NPS Form 10-900a).

1. Name of Property

Historic name Mount Washington School

Other names/site number N/A

Name of related Multiple Property Listing Historic Resources of the Kansas City Missouri School District Pre-1970

2. Location

Street & number 570 S. Evanston Avenue

N/A	not for publication
-----	---------------------

City or town Independence

N/A	vicinity
-----	----------

State Missouri Code MO County Jackson Code 095 Zip code 64053

3. State/Federal Agency Certification

As the designated authority under the National Historic Preservation Act, as amended,

I hereby certify that this nomination request for determination of eligibility meets the documentation standards for registering properties in the National Register of Historic Places and meets the procedural and professional requirements set forth in 36 CFR Part 60.

In my opinion, the property meets does not meet the National Register Criteria. I recommend that this property be considered significant at the following level(s) of significance:

national statewide local

Applicable National Register Criteria: A B C D

Mark A. Miles

February 25, 2013

Signature of certifying official/Title Mark A. Miles, Deputy SHPO

Date

Missouri Department of Natural Resources
State or Federal agency/bureau or Tribal Government

In my opinion, the property meets does not meet the National Register criteria.

Signature of commenting official _____ Date _____

Title _____ State or Federal agency/bureau or Tribal Government _____

4. National Park Service Certification

I hereby certify that this property is:

entered in the National Register determined eligible for the National Register

determined not eligible for the National Register removed from the National Register

other (explain:)

Jon Edson H. Beall

4.23.13

Signature of the Keeper

Date of Action

Mount Washington School
Historic Resources of the Kansas City Missouri
School District Pre-1970
Name of Property

Jackson County, Missouri
County and State

5. Classification

Ownership of Property
(Check as many boxes as apply.)

<input type="checkbox"/>	private
<input checked="" type="checkbox"/>	public - Local
<input type="checkbox"/>	public - State
<input type="checkbox"/>	public - Federal

Category of Property
(Check only **one** box.)

<input checked="" type="checkbox"/>	building(s)
<input type="checkbox"/>	district
<input type="checkbox"/>	site
<input type="checkbox"/>	structure
<input type="checkbox"/>	object

Number of Resources within Property
(Do not include previously listed resources in the count.)

Contributing	Noncontributing	
1	1	buildings
		sites
		structures
		objects
1	1	Total

Number of contributing resources previously listed in the National Register

0

6. Function or Use

Historic Functions
(Enter categories from instructions.)

EDUCATION – School

Current Functions
(Enter categories from instructions.)

VACANT/NOT IN USE

7. Description

Architectural Classification
(Enter categories from instructions.)

LATE 19TH AND 20TH CENTURY REVIVALS –
Classical Revival; Spanish/Colonial Revival
LATE 19TH AND EARLY 20TH CENTURY
AMERICAN MOVEMENTS – Prairie School

Materials
(Enter categories from instructions.)

foundation: STONE; CONCRETE
walls: BRICK
roof: ASPHALT
other: WOOD

NARRATIVE DESCRIPTION ON CONTINUATION PAGES

Mount Washington School
Historic Resources of the Kansas City Missouri
School District Pre-1970

Jackson County, Missouri

Name of Property

County and State

8. Statement of Significance

Applicable National Register Criteria

(Mark "x" in one or more boxes for the criteria qualifying the property for National Register listing.)

- A Property is associated with events that have made a significant contribution to the broad patterns of our history.
- B Property is associated with the lives of persons significant in our past.
- C Property embodies the distinctive characteristics of a type, period, or method of construction or represents the work of a master, or possesses high artistic values, or represents a significant and distinguishable entity whose components lack individual distinction.
- D Property has yielded, or is likely to yield, information important in prehistory or history.

Criteria Considerations

(Mark "x" in all the boxes that apply.)

Property is:

- A Owned by a religious institution or used for religious purposes.
- B removed from its original location.
- C a birthplace or grave.
- D a cemetery.
- E a reconstructed building, object, or structure.
- F a commemorative property.
- G less than 50 years old or achieving significance within the past 50 years.

STATEMENT OF SIGNIFICANCE ON CONTINUATION PAGES

9. Major Bibliographical References

Bibliography (Cite the books, articles, and other sources used in preparing this form.)

Previous documentation on file (NPS):

- preliminary determination of individual listing (36 CFR 67 has been requested)
- previously listed in the National Register
- previously determined eligible by the National Register
- designated a National Historic Landmark
- recorded by Historic American Buildings Survey # _____
- recorded by Historic American Engineering Record # _____
- recorded by Historic American Landscape Survey # _____

Areas of Significance

EDUCATION

ARCHITECTURE

Period of Significance

1903-1963

Significant Dates

1903, 1910, 1913, 1924

Significant Person

(Complete only if Criterion B is marked above.)

N/A

Cultural Affiliation

N/A

Architect/Builder

Anderson, A. B. (Architect, 1903 and 1910)

Smith, Charles A. (Architect, 1924)

Primary location of additional data:

- State Historic Preservation Office
- Other State agency
- Federal agency
- Local government
- University
- Other

Name of repository: Missouri Valley Special Collections, KCPL
Western Historical Manuscript Coll., UMKC

Mount Washington School
Historic Resources of the Kansas City Missouri
School District Pre-1970
Name of Property

Jackson County, Missouri
County and State

Historic Resources Survey Number (if assigned): N/A

10. Geographical Data

Acreeage of Property 3.26

Latitude/Longitude Coordinates

Datum if other than WGS84: _____
(enter coordinates to 6 decimal places)

1	_____	_____	3	_____	_____
	Latitude:	Longitude:		Latitude:	Longitude:
2	_____	_____	4	_____	_____
	Latitude:	Longitude:		Latitude:	Longitude:

UTM References

(Place additional UTM references on a continuation sheet.)
_____ NAD 1927 or X NAD 1983

1	<u>15</u>	<u>373589</u>	<u>4329256</u>	3	_____	_____	_____
	Zone	Easting	Northing		Zone	Easting	Northing
2	_____	_____	_____	4	_____	_____	_____
	Zone	Easting	Northing		Zone	Easting	Northing

Verbal Boundary Description (On continuation sheet)

Boundary Justification (On continuation sheet)

11. Form Prepared By

name/title Elizabeth Rosin (Principal), Rachel Nugent, Kristen Ottesen, Rebecca Reese (Associates)

organization Rosin Preservation, LLC date October 23, 2012

street & number 215 W. 18th Street, Ste. 150 telephone 816-472-4950

city or town Kansas City state MO zip code 64108

e-mail elizabeth@rosinpreservation.com

Additional Documentation

Submit the following items with the completed form:

- **Maps:**
 - A **USGS map** (7.5 or 15 minute series) indicating the property's location.
 - A **Sketch map** for historic districts and properties having large acreage or numerous resources. Key all photographs to this map.
- **Continuation Sheets**
- **Photographs**
- **Owner Name and Contact Information**
- **Additional items:** (Check with the SHPO or FPO for any additional items.)

Mount Washington School
Historic Resources of the Kansas City Missouri
School District Pre-1970
Name of Property

Jackson County, Missouri

County and State

Paperwork Reduction Act Statement: This information is being collected for applications to the National Register of Historic Places to nominate properties for listing or determine eligibility for listing, to list properties, and to amend existing listings. Response to this request is required to obtain a benefit in accordance with the National Historic Preservation Act, as amended (16 U.S.C.460 et seq.).

Estimated Burden Statement: Public reporting burden for this form is estimated to average 18 hours per response including time for reviewing instructions, gathering and maintaining data, and completing and reviewing the form. Direct comments regarding this burden estimate or any aspect of this form to the Office of Planning and Performance Management, U.S. Dept. of the Interior, 1849 C. Street, NW, Washington, DC.

Photographs

Submit clear and descriptive photographs. The size of each image must be 1600x1200 pixels (minimum), 3000x2000 preferred, at 300 ppi (pixels per inch) or larger. Key all photographs to the sketch map. Each photograph must be numbered and that number must correspond to the photograph number on the photo log. For simplicity, the name of the photographer, photo date, etc. may be listed once on the photograph log and doesn't need to be labeled on every photograph.

Photo Log:

Name of Property: Mount Washington School
City or Vicinity: Independence
County: Jackson County State: Missouri
Photographer: Brad Finch
Date Photographed: August 2012

Description of Photograph(s) and number, include description of view indicating direction of camera:

- 1 of 16. 1924 block, south and east elevations, view NW.
- 2 of 16. 1903/1910 block and 1924 block, south elevation, view NW.
- 3 of 16. 1903/1910 block and 1924 block, south elevation, view NE.
- 4 of 16. 1903 block, west elevation, view E.
- 5 of 16. 1903/1910 block and 1924 section, north and west elevations, view SE.
- 6 of 16. South Arlington Street, view N.
- 7 of 16. East 7th Street, view W.
- 8 of 16. South Evanston Avenue, view S.
- 9 of 16. Corridor connecting 1903/1910 block with 1924 block, view W.
- 10 of 16. 1903 block, main entrance, view W.
- 11 of 16. 1924 block, 2nd floor, typical classroom, view NE.
- 12 of 16. 1924 block, 2nd floor, typical classroom, view SW.
- 13 of 16. 1924 block, Gymnasium, view SW.
- 14 of 16. 1924 block, Auditorium, view NW.

Mount Washington School
Historic Resources of the Kansas City Missouri
School District Pre-1970

Jackson County, Missouri

Name of Property

County and State

15 of 16. 1924 block, Auditorium, view SE.

16 of 16. 1924 block, Branch Library, view SW.

Figure Log:

Include figures on continuation pages at the end of the nomination.

Figure 1. Ground floor plan, 1924. Historic Plans, Charles A. Smith. Courtesy of the Kansas City Missouri School District Archives.

Figure 2. First floor plan, 1924. Historic Plans, Charles A. Smith. Courtesy of the Kansas City Missouri School District Archives.

Figure 3. Second floor plan, 1924. Historic Plans, Charles A. Smith. Courtesy of the Kansas City Missouri School District Archives.

Figure 4. Elevations, 1924. Historic Plans, Charles A. Smith. Courtesy of the Kansas City Missouri School District Archives.

Figure 5. Historic photograph, 1903 Section (west elevation) c. 1903, reprinted in *Intercity News*, September 7, 1956, Vertical file: Mount Washington School, Missouri Valley Special Collections, Kansas City Public Library.

Figure 6. Historic photograph, 1903 and 1910 Sections (west and south elevations) c. 1910. Vertical file: Mount Washington School, Missouri Valley Special Collections, Kansas City Public Library.

Figure 7. Historic photograph, 1924 Addition (south and east elevations), c. 1925. Courtesy of Missouri Valley Special Collections, Kansas City Public Library.

Figure 8. Historic photograph, Branch Library interior, c. 1925. Courtesy of Missouri Valley Special Collections, Kansas City Public Library.

Figure 9. Photo Map. Exterior and First Floor.

Figure 10. Photo Map. Ground Floor.

Figure 11. Photo Map. Second Floor.

National Register of Historic Places
Continuation Sheet

Section number 7 Page 1

Mount Washington School
Name of Property
Jackson County, Missouri
County and State
Historic Resources of the Kansas City Missouri School District Pre-1970
Name of multiple listing (if applicable)

SUMMARY

Mount Washington School at 570 S. Evanston Avenue, Independence, Jackson County, Missouri, is a two-story T-shaped brick building comprised of two distinct sections that illustrate three separate building campaigns. The square west leg of the T is the earliest section with the west half built in 1903 and the east half built in 1910. The long east leg of the T, built in 1924, connects to the east elevation of the earlier block. While all three sections have red brick walls, they differ in architectural style, fenestration, and roof form. Buff brick quoins at the corners, flat arches over the first floor windows, and corbelling above the second floor windows communicate the Classical Revival style of the 1903 block. Bands of windows, unadorned masonry, and hipped roof with wide overhanging eaves communicate Prairie style influences on the 1910 block. The T-shape 1924 addition uses the same red brick and limestone to evoke the Spanish Revival style with arched door and window openings, ornamental brickwork, and red clay tile pent roofs. The interior remains intact. The 1903 and 1910 blocks contain classrooms, while the 1924 block has classrooms and support spaces, like the gymnasium, auditorium, cafeteria, and a branch of the public library, which had its own exterior entrance. Central halls and radiating classrooms define the 1903/1910 block, while double-loaded linear corridors organize the later addition. Corridors and classrooms retain historic finishes, such as wood trim, built-ins, and chalkboards. Classroom doors were replaced throughout the building. Exterior windows and doors were also replaced, but the historic masonry openings remain intact. These changes do not diminish one's understanding of the building as a school. It retains integrity of location, setting, design, materials, workmanship, feeling, and association. Mount Washington School is an excellent example of the evolution of public school architecture in Jackson County, Missouri and includes both the Ward School/Graded School and the Early Twentieth Century/Progressive Era School property subtypes defined in the Multiple Property Documentation Form (MPDF) "Historic Resources of the Kansas City Missouri School District Pre-1970."

ELABORATION

SETTING

Mount Washington School sits on the north side of Independence Avenue between Evanston and Arlington Avenues in Independence, Missouri. The expansive lot occupies the summit of a large hill with the school building anchoring the southeast corner of the property. Paved play areas surround the school on the north, south and west.

A stone retaining wall runs along the south side of the lot, curving to the north at the southwest corner. Public sidewalks line the west, south, and east sides of the lot. Concrete stairs rise from the sidewalks along Independence Avenue and Arlington Avenue to the building and playground. A concrete driveway north of the building accesses the property from Evanston

National Register of Historic Places
Continuation Sheet

Section number 7 Page 2

Mount Washington School
Name of Property
Jackson County, Missouri
County and State
Historic Resources of the Kansas City Missouri School District Pre-1970
Name of multiple listing (if applicable)

Avenue. The non-contributing one-story brick garage or storage building sits just north of the driveway.

Mount Washington School sits at the heart of a small residential enclave three miles northwest of downtown Independence. U.S. Highway 24, which corresponds to Independence Avenue/Winner Road as it travels east from Kansas City, dips to the south between E. 18th Street and East Wilson Road. This bend in the road along with curving railroad alignments to the east and west encircle the neighborhood. One- and two-story single family dwellings that date to the early twentieth century surround the school property. The neighborhood also includes a few modest churches and a lodge hall of similar vintage along Independence Avenue.

MOUNT WASHINGTON SCHOOL – 1903, 1910, 1924 (CONTRIBUTING)

Exterior

The original four-room school (1903) is now the west end of the building. In 1910 a four-room block was added to the end east of the 1903 school. The 1910 addition mimicked the 1903 block in size, massing, and roof shape with differences evident in the fenestration and architectural details. The T-shaped 1924 addition attached to the east end of the 1910 block. The 1903 and 1910 blocks housed classrooms, while the 1924 addition contained regular and specialty classrooms as well as support spaces (cafeteria, library, gymnasium, and auditorium). The library at the south end of the 1924 addition was historically the public library branch serving the area surrounding the school. It had a dedicated exterior entrance.

The 1903 and 1910 blocks are rectangular in plan and appear to match at first glance due to their identical massing and common materials. Both blocks have flat red brick walls, limestone foundations, and hipped roofs. Hipped dormers rise from the north and south roof slopes and the wide eaves overhang the walls on each elevation. Dentiled molding rings the top of the blocks below the eaves, further unifying their appearance.

Differences in masonry detailing and fenestration communicate subtle variations in architectural style. Elements of the Classical Revival Style on the 1903 block include buff brick quoining at the corners, flat arches over the first-floor windows, and corbelling above the second-floor windows. The recessed central portion of the west wall (the 1903 front entrance) has an arched doorway on the first floor and arched windows on the second floor, both executed in buff brick. A stone tablet above the doorway is etched with the words "Mt-Washington School, Jan. 1 1903."

The 1910 block lacks the masonry details that grace the 1903 block, and it has ribbons of windows that span the north and south elevations instead of individual punched openings. The

National Register of Historic Places
Continuation Sheet

Section number 7 Page 3

Mount Washington School
Name of Property
Jackson County, Missouri
County and State
Historic Resources of the Kansas City Missouri School District Pre-1970
Name of multiple listing (if applicable)

unadorned masonry and the fenestration pattern, together with the massing, the hip roof and wide eaves, suggests Prairie Style influences.

When the 1910 addition was constructed the main entrance to the school was reoriented to the south elevation, facing Independence Avenue. A portico with brick pillars supporting a gable roof was added between the blocks to shelter the recessed entry at the top of the stairs.

The 1924 addition, facing Evanston Avenue, presents a third architectural variant with very different massing and styling from the earlier blocks. Although it shares the vocabulary of red brick walls and limestone windowsills, the brick is more polychromatic and the long rectangular facades have elements of Spanish Revival styling, including arched doorways and windows, red clay tile on pent roofs and ornamental brickwork at the parapet, stringcourse, and above the doorways.

The 1924 block also accommodated different functions. In addition to classrooms, the north end of the 1924 addition houses the gymnasium on the lower level and the auditorium on the upper floor. A branch of the local public library occupied the first floor at the south end of the block. The stone tablet above the library entrance is inscribed "PUBLIC LIBRARY WASHINGTON BRANCH." Entrances at the center of the east elevation provide access to classrooms, gymnasium, and auditorium and in the south elevation access to the library.

Today, non-historic aluminum doors and windows fill the original openings of the school. Historic evidence indicates that the 1903 block had two-over-two hung windows; the 1910 block had one-over-one hung windows; and the 1924 block had six-over-six hung windows in most openings. Above the library was a "fresh air" classroom. Because the windows of this classroom were left open almost year round, it had twelve-pane steel windows with center pivot sashes.

Interior

The historic building plan remains intact on the interior. The 1903 and 1910 blocks have classrooms arranged around a central hall on the first and second floors. Stair halls on the east and west sides provide vertical circulation between the basement and the second floor. The east stair also connects the 1910 and 1924 blocks, which have different floor heights at each level. The 1924 block has classrooms flanking double-loaded corridors. A stair hall at the center of the east wall provides vertical circulation in this block.

Throughout the building, classrooms retain historic wood trim, built-ins, and chalkboards. Corridors retain historic trim but classroom doors have been replaced with non-historic wood doors and frames. Historic doors, multi-light sidelights and transoms remain at the entry

National Register of Historic Places
Continuation Sheet

Section number 7 Page 4

Mount Washington School
Name of Property
Jackson County, Missouri
County and State
Historic Resources of the Kansas City Missouri School District Pre-1970
Name of multiple listing (if applicable)

vestibules throughout the building. With the exception of the gym, which has an exposed wood floor, carpet covers the building's historic wood (1903 and 1910) and concrete (1924) floors.

AUXILIARY BUILDING – 1986 (NON-CONTRIBUTING)

A one-story red brick building with a concrete base stands just north of the driveway that runs along the north elevation of the 1924 block. The building has an overhead metal garage door in the south elevation, a single opening with a metal slab door on the north elevation, and a single window opening on the west elevation. This small building was constructed outside the period of significance in 1986 and is therefore non-contributing.

INTEGRITY

Mount Washington School retains excellent integrity. It is an outstanding example of both a Ward/Graded School and an Early Twentieth Century/Progressive Era School, property types defined in the MPDF "Historic Resources of the Kansas City Missouri School District Pre-1970." The property reflects the evolution of public school architecture in connection with the Kansas City, Missouri School District (District). The property meets the general registration requirements of the MPDF, while each section of the building meets the registration requirements specific to its property subtype. The Mount Washington School retains excellent architectural integrity to communicate the sequential building campaigns and the design styles popular at the time of construction. On the exterior and interior, the property clearly conveys its historic educational function, while the massing, materials, and ornament communicate vernacular expressions of Classical Revival, Prairie School, and Spanish Revival styling, architectural idioms commonly applied to school buildings of this era. The 1924 block illustrates the design aesthetic of Kansas City Board of Education Architect Charles A. Smith. Features of Progressive Era programs implemented in schools throughout the District also remain evident, including the branch library, the "fresh air" classroom, and the integrated, stacked auditorium and gymnasium. Although the original windows and doors have been replaced, the new fenestration does not alter the historic masonry openings. The configuration of corridors, gymnasium, and auditorium remain intact. The majority of the classrooms retain their original configurations and some finishes. The alterations exhibited by Mount Washington School are common among educational resources and do not compromise its integrity. Overall the building clearly communicates feelings about and associations with its original design and educational function.

National Register of Historic Places
Continuation Sheet

Section number 8 Page 5

Mount Washington School
Name of Property
Jackson County, Missouri
County and State
Historic Resources of the Kansas City Missouri School District Pre-1970
Name of multiple listing (if applicable)

SUMMARY

Mount Washington School, located at 570 S. Evanston Avenue, Independence, Jackson County, Missouri, is locally significant under National Register Criterion A for the area of EDUCATION and Criterion C for the area of ARCHITECTURE. Built over the course of twenty years, the property reflects the evolution of public school architecture and educational philosophy. The sections of the Mount Washington School illustrate two different property types identified in the Multiple Property Documentation Form (MPDF) "Historic Resources of the Kansas City Missouri School District Pre-1970." The earliest section of the building was constructed in 1903 for the Mount Washington School District. The growing local student population required additional space, resulting in two additional building campaigns in 1910 and 1924, each of which roughly doubled the size of the existing school. Andrew B. Anderson designed the 1903 block and, presumably, the 1910 block.¹ These sections illustrate the Ward School/Graded School property type. The Kansas City Missouri School District (District) annexed the Mount Washington School District in 1911 and operated the school until 2007. Charles A. Smith, the Kansas City, Missouri Board of Education Architect, designed the 1924 addition, incorporating many of the Progressive Era features he promoted for schools in the District, such as a branch of the public library, a large "fresh air" classroom, and an integrated auditorium and gymnasium. The historic configuration and many finishes remain intact on both the exterior and interior of Mount Washington School, reflecting the evolution of educational philosophies discussed in the context "Public Education in Kansas City, Missouri (1867-1970)," specifically the "Early Years (1867-1899)" and "Progressive Era (1900-1932)" sub-contexts. The nominated resource also reflects the architectural evolution of school buildings, as described in the context "Public School Buildings in Kansas City, Missouri," specifically the "Late Nineteenth Century Schools (1867-1899)" and "Early Twentieth Century Schools (1900-1940)" sub-contexts. The Mount Washington School continues to communicate its historic educational function and the eras in which it was constructed. The period of significance is 1903 through 1963, beginning with the date of construction and ending with the fifty-year closing date for periods of significance where activities begun historically continue to have importance but no more specific date can be defined.

ELABORATION

Mount Washington was a small town located between the larger cities of Kansas City and Independence in unincorporated Jackson County, Missouri.² The original Mount Washington

¹ Drawings or building permits confirming Anderson as the architect of the 1910 block were not found. However, in 1909 Anderson was listed in city directories as a resident of Mount Washington, having moved from Kansas City, where he still maintained his practice.

² "The Past and Present," *Comprehensive Plan*, City of Independence, <http://www.ci.independence.mo.us/comdev/ComprehensivePlan.aspx>, (accessed November 8, 2011). The City of Independence annexed Mount Washington in the mid-twentieth century.

National Register of Historic Places
Continuation Sheet

Section number 8 Page 6

Mount Washington School
Name of Property
Jackson County, Missouri
County and State
Historic Resources of the Kansas City Missouri School District Pre-1970
Name of multiple listing (if applicable)

School was built in 1861 at Kentucky and Home Avenues (now the site of Fairmount School). It served children in a district that extended from Beaumont Street on the west, Van Horn Road on the south, the Missouri River on the north, and the Independence city limit (Forest Avenue) on the east. As the population grew through the end of the century, the school became overcrowded and the Mount Washington School District built a second school for local students.

Shortly after 1900, the State Superintendent of Public Schools advocated the consolidation of rural districts to pool resources for larger student populations. Having more students in each age group meant that a district could implement graded schools, which provided a more focused curriculum than rural school houses.³ Once the Mount Washington district consolidated, it needed a new school to serve all of its students. In 1903 the district erected a four-room graded school on Independence Avenue between Evanston and Arlington Avenues.⁴ The nameplate above the main entrance to this section of the building is inscribed with the name of the school "Mount Washington School" and the date of construction "Jan 1 1903." While this building was constructed shortly after 1899, the architecture resembles other Kansas City School District schools constructed in the late 1800s, as described in the context "Public School Buildings of Kansas City (1867-1970): Late Nineteenth Century Schools (1867-1899)," highlighting local design trends.

The student population of the Mount Washington School quickly outgrew the four-room building. In 1910 an addition that mimicked the plan and massing of the original building was constructed to the east, doubling the size of the school. The district also built the Fairmount School two blocks north and four blocks east in 1909.⁵

The Mount Washington School as it stood in 1910 reflects the prevailing educational philosophy of the late nineteenth century, particularly in a more rural area. Rather than have students of all ages in a single classroom, the eight nearly identical classrooms were each dedicated to a separate grade. This arrangement along with the building form and massing typifies the Ward School/Graded School property type defined in the MPDF. While the earliest sections of the Mount Washington School resemble the graded schools designed throughout the Kansas City School District in the late nineteenth century, the treatment of each section (Classical Revival on the west and Prairie School on the east) illustrates the variety of architectural influences present at the turn of the twentieth century. The 1903/1910 portion of the school meets the registration requirements for the Ward School/Graded School property type, specifically retaining its historic square form and vertical massing, the hipped roof with wide overhanging eaves and dormers, the brick cladding with limestone trim, and its historic fenestration patterns.

³ Missouri Department of Education, *Fifty-third Report of the Public Schools of the State of Missouri for the School Year Ending Jun 30, 1902*, (Jefferson City, MO: Tribune Printing Company, 1902)

⁴ "Mount Washington School History," Vertical file: Mount Washington School, Kansas City (Missouri) Public Library Missouri Valley Room.

⁵ "Mount Washington School History."

National Register of Historic Places
Continuation Sheet

Section number 8 Page 7

Mount Washington School
Name of Property
Jackson County, Missouri
County and State
Historic Resources of the Kansas City Missouri School District Pre-1970
Name of multiple listing (if applicable)

The symmetrical west (originally the front) façade has a recessed entry. The central halls that organize the interior are surrounded by classrooms along the perimeter walls. Although the 1910 section exhibits slight differences in architectural treatment, it exhibits the same form and materials as the 1903 section. The buff brick quoining, flat-arched lintels, and round-arches that ornament the symmetrical west façade communicate the Classical Revival style on the 1903 section. The banded windows and lack of ornament on the 1910 section reflect the Prairie School influence. These were architectural styles commonly employed in school design at the turn of the twentieth century.

In 1911 the Mount Washington School Board called a special election, asking voters whether Mount Washington should seek annexation by the Kansas City, Missouri School District. This would provide students access to better quality high schools and other advantages associated with a much larger school district. Voters unanimously agreed with the proposition, with 95 votes in favor of annexation and none against it. Mount Washington became part of the Kansas City School District by 1913. At the time, the two Mount Washington schools (Mount Washington School and Fairmount School) had a total enrollment of 350 students, led by ten teachers.⁶

Enrollment at Mount Washington South reached 600 pupils by 1920, and the building was bursting at its seams. A two-room frame annex was built east of the school to ease the overcrowding, but it did not provide enough relief. In 1924 Charles A. Smith, Kansas City Board of Education Architect, designed a large addition for the east end of the 1910 block, providing twelve additional classrooms, a gymnasium, an auditorium, and a cafeteria.⁷ The earlier building was also renovated. Basement rooms were converted to playrooms and a manual training room, new openings were cut to connect to the addition, and new linoleum flooring was installed in classrooms and offices.⁸

The 1924 addition to the Mount Washington School meets the registration requirements for the Early Twentieth Century/Progressive Era School, specifically the Elementary School subtype defined in the MPDF. The addition to Mount Washington shares many architectural attributes with other schools designed by Smith during this period, including the Spanish Revival façade treatments, the fresh air classroom, and the integration of a branch library. The plan highlights the Progressive Era programs implemented throughout the District that provided a diverse curriculum and emphasized improved hygiene and safety, as described in the historic context "Public Education in Kansas City, Missouri (1867-1970): Progressive Era (1900-1932)" and "Public School Buildings in Kansas City, Missouri (1867-1970): Early Twentieth Century Schools (1900-1940)." Specialty classrooms at the Mount Washington School designated for vocational

⁶ *Kansas City Times*, October 19, 1911. Clippings file, Kansas City (Missouri) Public Library Missouri Valley Room.

⁷ Charles A. Smith, "Addition to Mount Washington School," Kansas City, Missouri, 1923. Kansas City Missouri Public School Archives.

⁸ *Kansas City Times*, August 22, 1924. Clippings file, Kansas City (Missouri) Public Library Missouri Valley Room.

National Register of Historic Places
Continuation Sheet

Section number 8 Page 8

Mount Washington School
Name of Property
Jackson County, Missouri
County and State
Historic Resources of the Kansas City Missouri School District Pre-1970
Name of multiple listing (if applicable)

training included cooking, sewing, and manual training. The basement had large lavatories, showers and locker rooms, while the second floor held a fresh air classroom. This expansive room had operable steel windows on three sides to accommodate children deemed at risk for tuberculosis. Smith's addition retains its historic irregular form, horizontal massing, and flat roof. The stacked auditorium and gymnasium and the outdoor play areas are extant, illustrating the importance of recreation during this period. Although it is an addition, this section of the building could stand on its own as a separate school with its own regular and specialty classrooms and support spaces.

Public Library

The Kansas City Board of Education established the Public Library of Kansas City in 1873 as an important resource for collecting and disseminating information for use by officers, teachers, and pupils in the District.⁹ Kansas City touted itself as the first city to establish branches of the public library in its public school buildings.¹⁰ As the library system grew during subsequent decades, branch libraries opened in new and existing buildings throughout the city. Despite the long-standing association of the public library with the public school system, the first branch library incorporated into an existing public school did not arrive until 1911 with the opening of Switzer School. The first schools specifically designed with branch libraries were Karnes School (1913), Northeast High School (1914), and Swinney School (1914). The 1924 addition to the Mount Washington School included the Washington Branch of the public library. This room had its own entrance facing Independence Avenue, illustrating its important tie to the community.

Mount Washington School remained in the Kansas City, Missouri School District until 2007 when Independence voters elected to transfer seven schools from the Kansas City, Missouri School District to the Independence School District. The Independence School District did not reopen Mount Washington School, and it has been vacant since 2008.

⁹ Carrie Westlake Whitney, *Kansas City Missouri: Its History and Its People 1808-1908*, Vol. 1 (Chicago: The S. J. Clarke Publishing Co., 1908) 349.

¹⁰ "Library, Public, Branches, High School – First in the U.S." *Kansas City Star*, September 11, 1927. Microfilm, Mounted Clippings: Library, Public, Missouri Valley Special Collections, Kansas City Public Library.

National Register of Historic Places
Continuation Sheet

Section number 9 & 10 Page 9

Mount Washington School
Name of Property Jackson County, Missouri
County and State Historic Resources of the Kansas City Missouri School District Pre-1970
Name of multiple listing (if applicable)

BIBLIOGRAPHY

Kansas City Times, August 22, 1924. "Schools-Public, Mount Washington" Clippings File. Kansas City (Missouri) Public Library Missouri Valley Room.

Kansas City Times, October 19, 1911. "Schools-Public, Mount Washington" Clippings File. Kansas City (Missouri) Public Library Missouri Valley Room.

Map of Greater Kansas City and Suburbs. Berry Publishing Company, 1912. http://www.kchistory.org/cdm4/item_viewer.php?CISOROOT=/Maps&CISOPTR=1547&CISOBOX=1&REC=7 (accessed November 9, 2011).

"Mount Washington School." Vertical File. Kansas City (Missouri) Public Library, Missouri Valley Room.

Rosin Preservation. National Register of Historic Places Multiple Property Documentation Form "Historic Resources of the Kansas City Missouri School District Pre-1970." Kansas City, Missouri, 2012.

Sanborn Map and Publishing Company, Ltd. *Sanborn Fire Insurance Map of Kansas City, Missouri*. New York: Sanborn Map Company, 1932. Kansas City (Missouri) Library website, <http://sanborn.umi.com.proxy.kclibrary.org/cgi-bin/auth.cgi?command=AccessOK&CCSI=121n> (accessed November 7, 2011).

"The Past and Present," *Comprehensive Plan, City of Independence*, <http://www.ci.independence.mo.us/comdev/ComprehensivePlan.aspx>, (accessed November 8, 2011).

VERBAL BOUNDARY DESCRIPTION

All of Lots 9 to 14, both inclusive, and the South ½ (50 feet) of Lot 15, Block 9, NORTH EVANSTON, a subdivision in Independence, Jackson County, Missouri.

BOUNDARY JUSTIFICATION

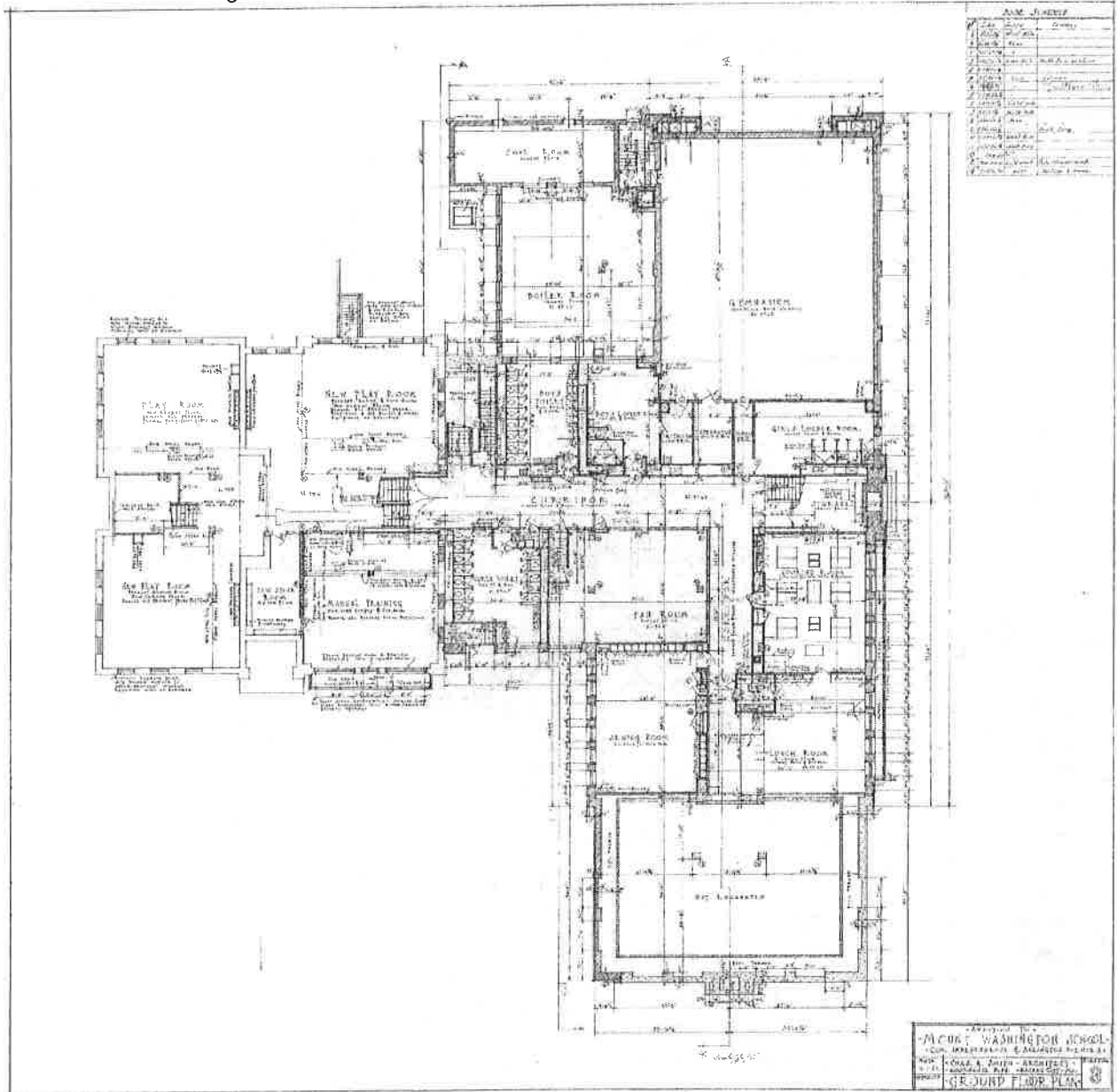
The boundary of the nominated resource includes the parcels of land historically associated with the property.

National Register of Historic Places
Continuation Sheet

Section number Figures Page 10

Mount Washington School
Name of Property
Jackson County, Missouri
County and State
Historic Resources of the Kansas City Missouri School District Pre-1970
District Pre-1970
Name of multiple listing (if applicable)

Figure 1. Ground Floor Plan, Historic Plans, Charles A. Smith, 1924.

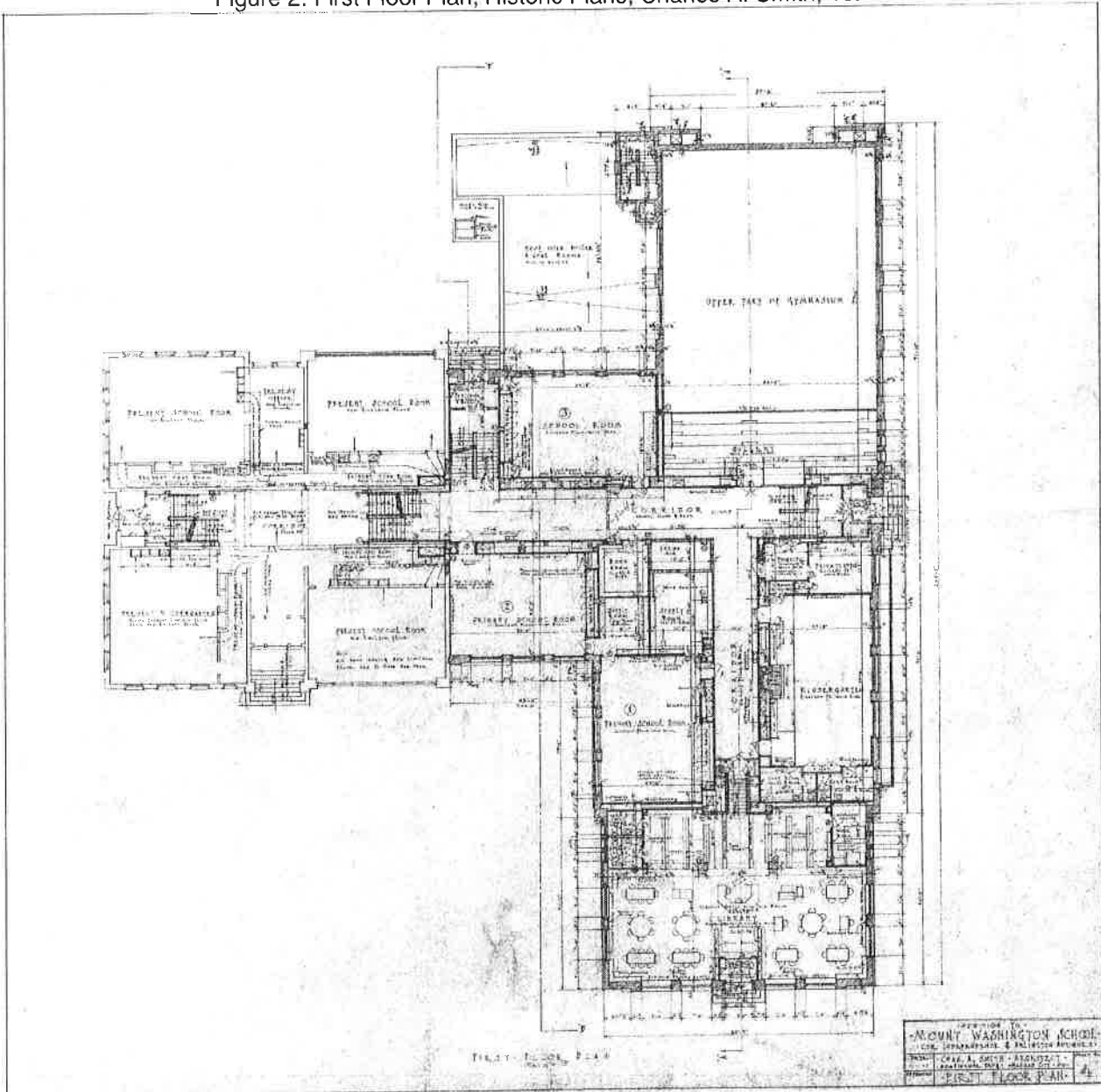


National Register of Historic Places
Continuation Sheet

Section number Figures Page 11

Mount Washington School
Name of Property
Jackson County, Missouri
County and State
Historic Resources of the Kansas City Missouri School District Pre-1970
Name of multiple listing (if applicable)

Figure 2. First Floor Plan, Historic Plans, Charles A. Smith, 1924.

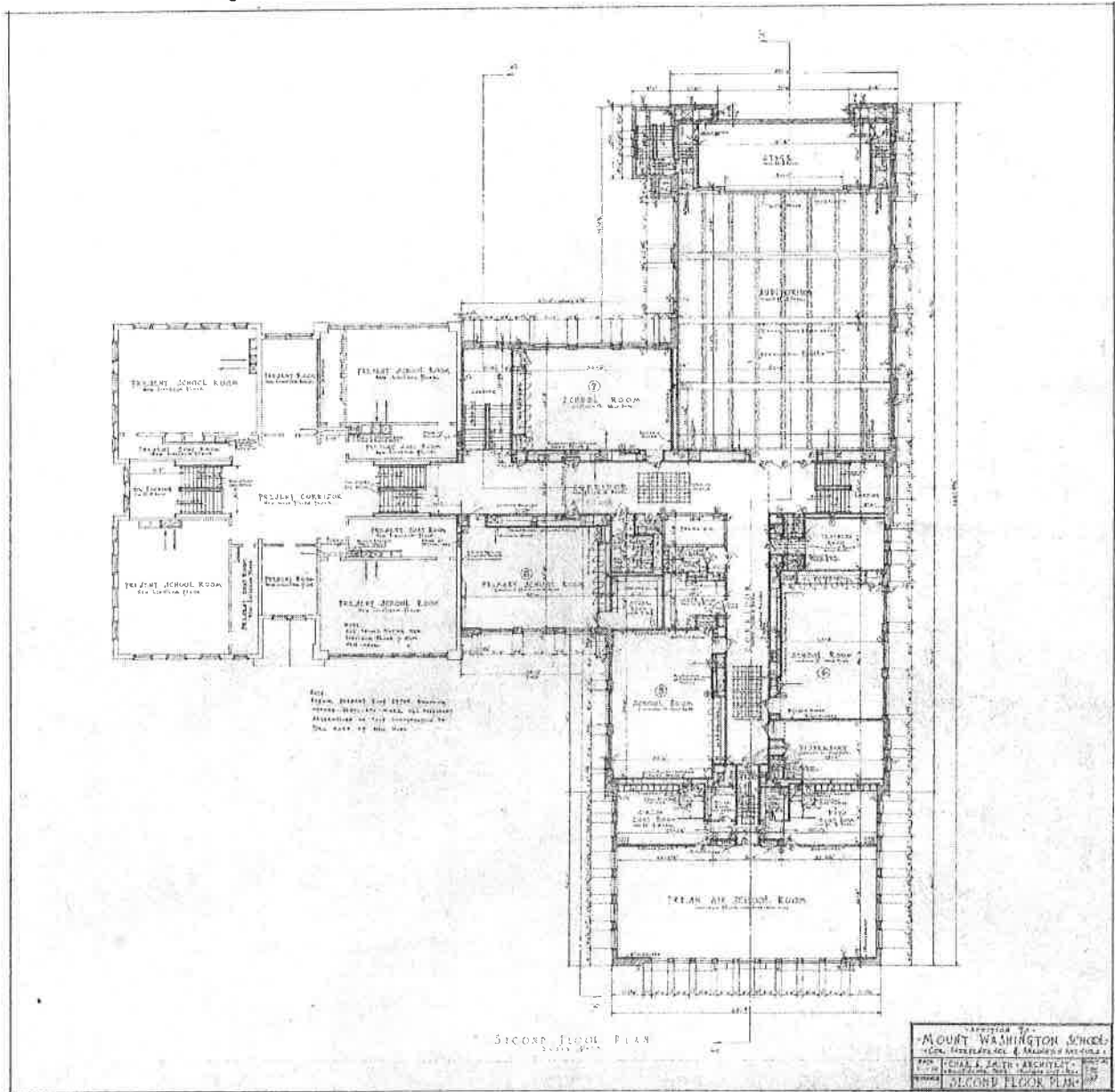


National Register of Historic Places
Continuation Sheet

Section number Figures Page 12

Mount Washington School
Name of Property
Jackson County, Missouri
County and State
Historic Resources of the Kansas City Missouri School District Pre-1970
Name of multiple listing (if applicable)

Figure 3. Second Floor Plan, Historic Plans, Charles A. Smith, 1924.



National Register of Historic Places
Continuation Sheet

Section number Figures Page 13

Mount Washington School
Name of Property
Jackson County, Missouri
County and State
Historic Resources of the Kansas City Missouri School District Pre-1970
Name of multiple listing (if applicable)

Figure 4. Elevations, Historic Plans, Charles A. Smith, 1924.



National Register of Historic Places
Continuation Sheet

Section number Figures Page 14

Mount Washington School

Name of Property

Jackson County, Missouri

County and State

Historic Resources of the Kansas City Missouri School

District Pre-1970

Name of multiple listing (if applicable)

Figure 5. Historic Photograph, 1903 Section (west elevation), c. 1903, reprinted 1956.

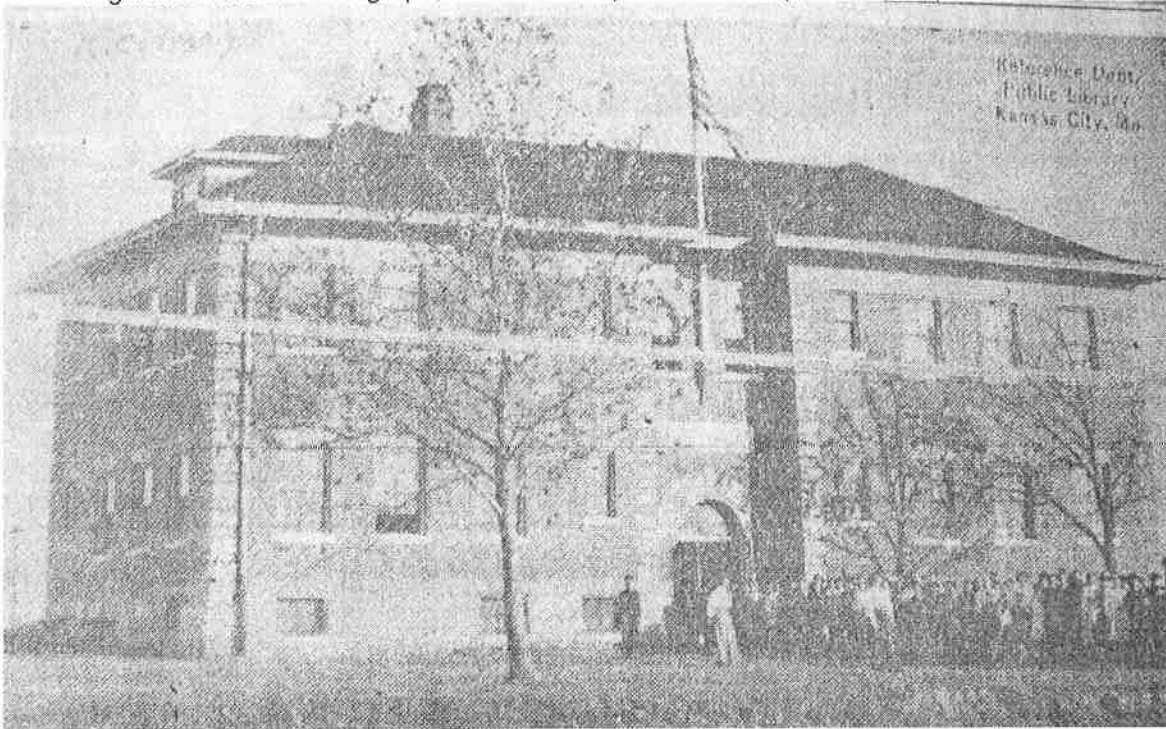
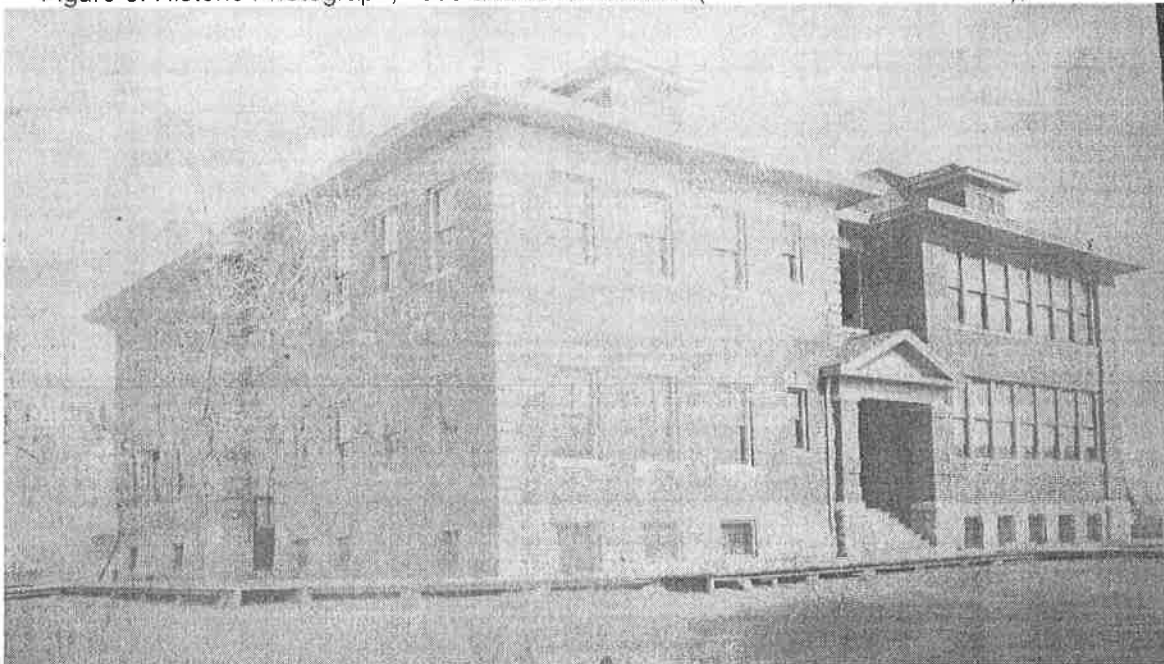


Figure 6. Historic Photograph, 1903 and 1910 Sections (west and south elevations), c. 1910.



National Register of Historic Places
Continuation Sheet

Section number Figures Page 15

Mount Washington School
Name of Property
Jackson County, Missouri
County and State
Historic Resources of the Kansas City Missouri School District Pre-1970
Name of multiple listing (if applicable)

Figure 7. Historic Photograph, 1924 Addition (south and east elevations), c. 1924.

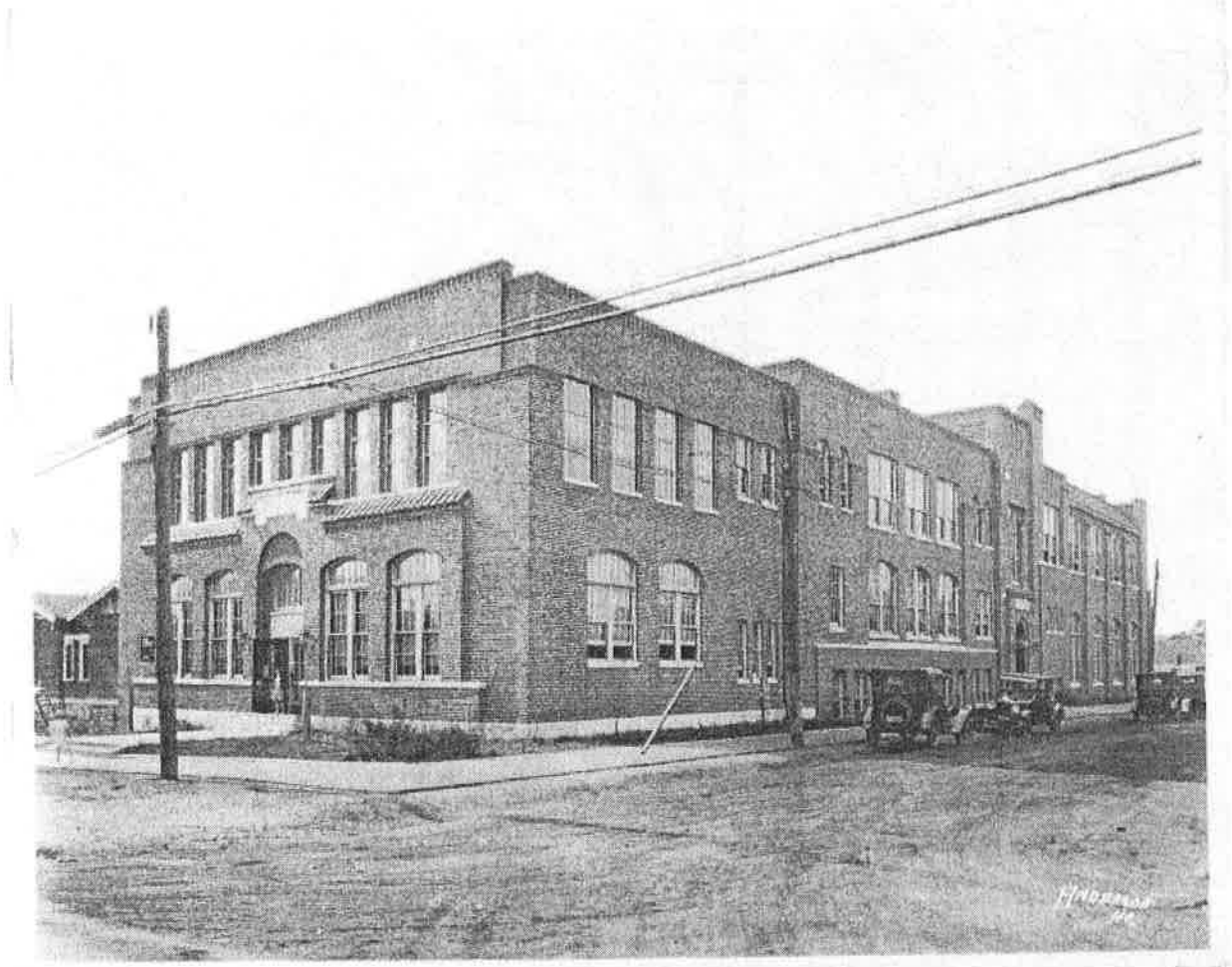


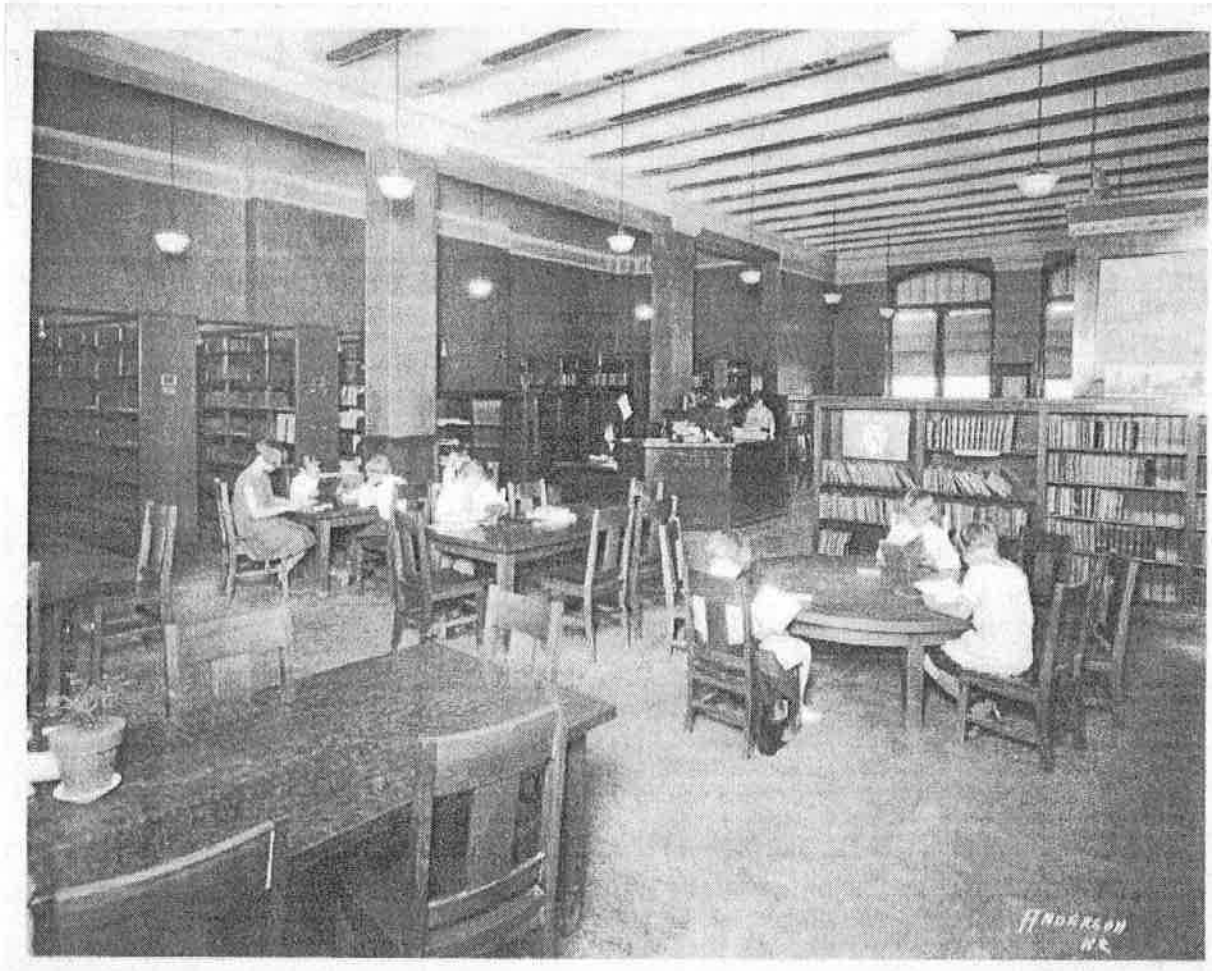
FIGURE 7. SOUTH AND EAST ELEVATIONS

National Register of Historic Places
Continuation Sheet

Section number Figures Page 16

Mount Washington School
Name of Property
Jackson County, Missouri
County and State
Historic Resources of the Kansas City Missouri School District Pre-1970
Name of multiple listing (if applicable)

Figure 8. Historic Photograph, Branch Library, c. 1924.

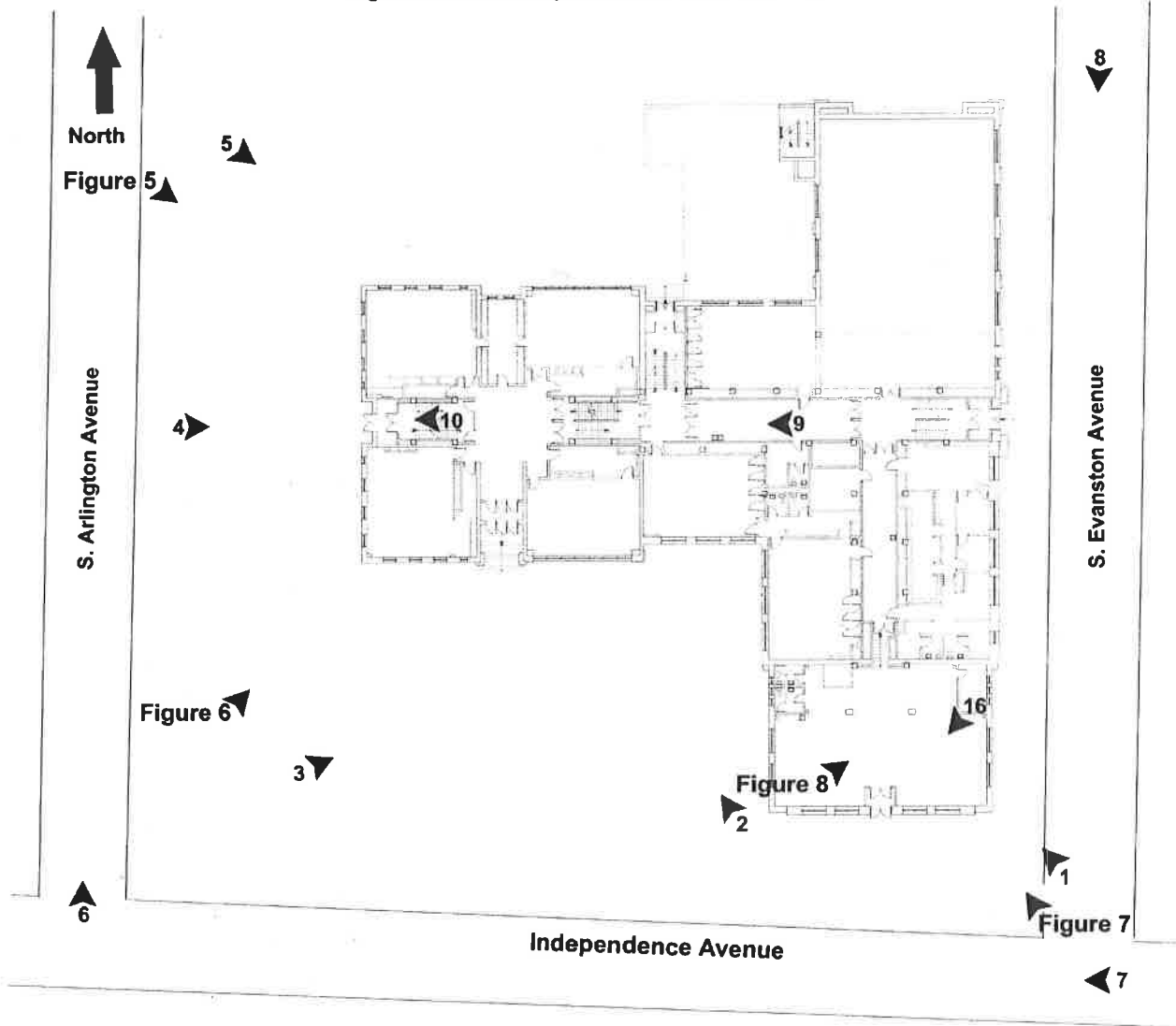


National Register of Historic Places
Continuation Sheet

Section number Figures Page 17

Mount Washington School
Name of Property
Jackson County, Missouri
County and State
Historic Resources of the Kansas City Missouri School District Pre-1970
Name of multiple listing (if applicable)

Figure 9. Photo Map. Exterior and First Floor

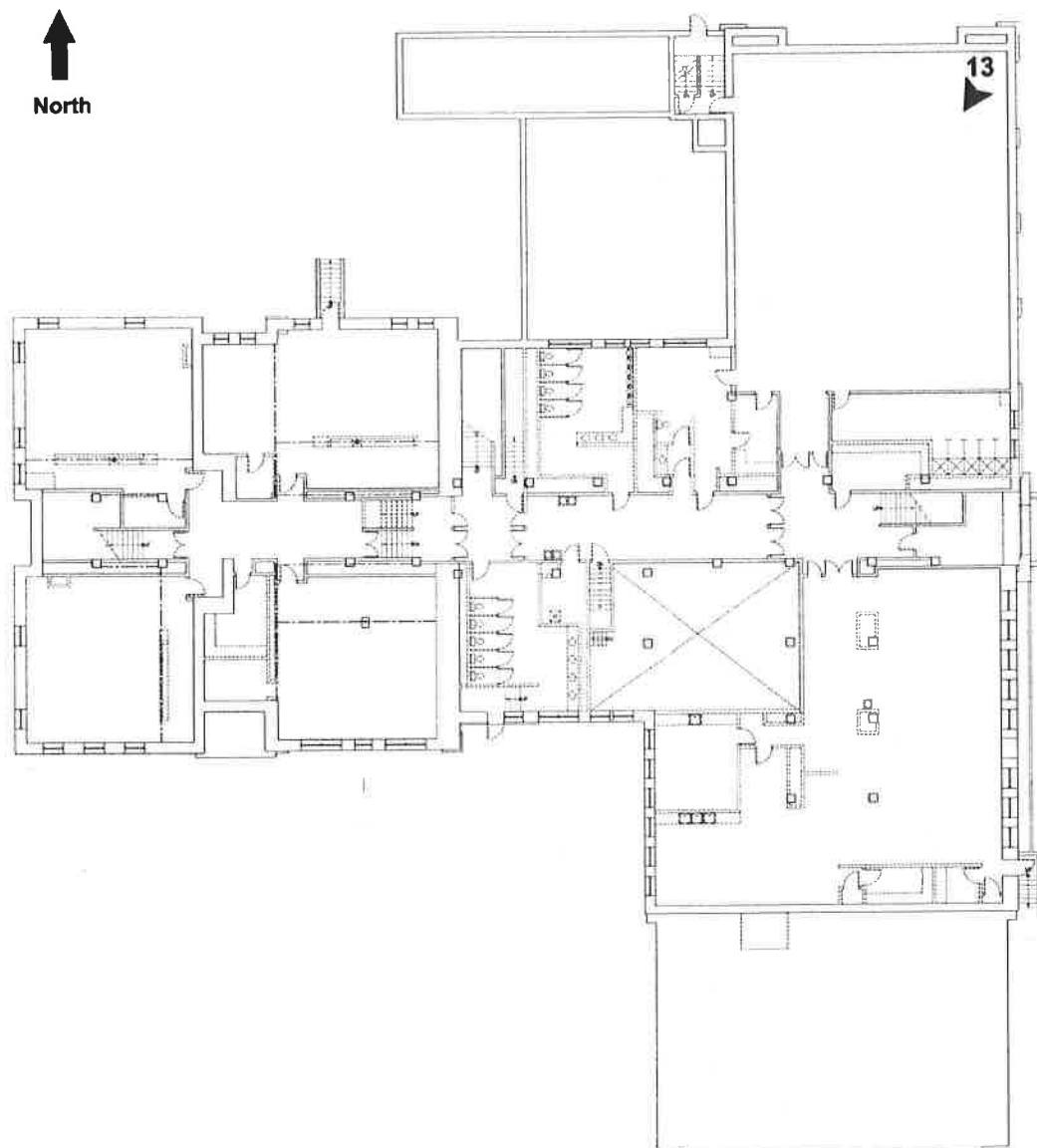


National Register of Historic Places
Continuation Sheet

Section number Figures Page 18

Mount Washington School
Name of Property
Jackson County, Missouri
County and State
Historic Resources of the Kansas City Missouri School District Pre-1970
Name of multiple listing (if applicable)

Figure 10. Photo Map. Ground Floor

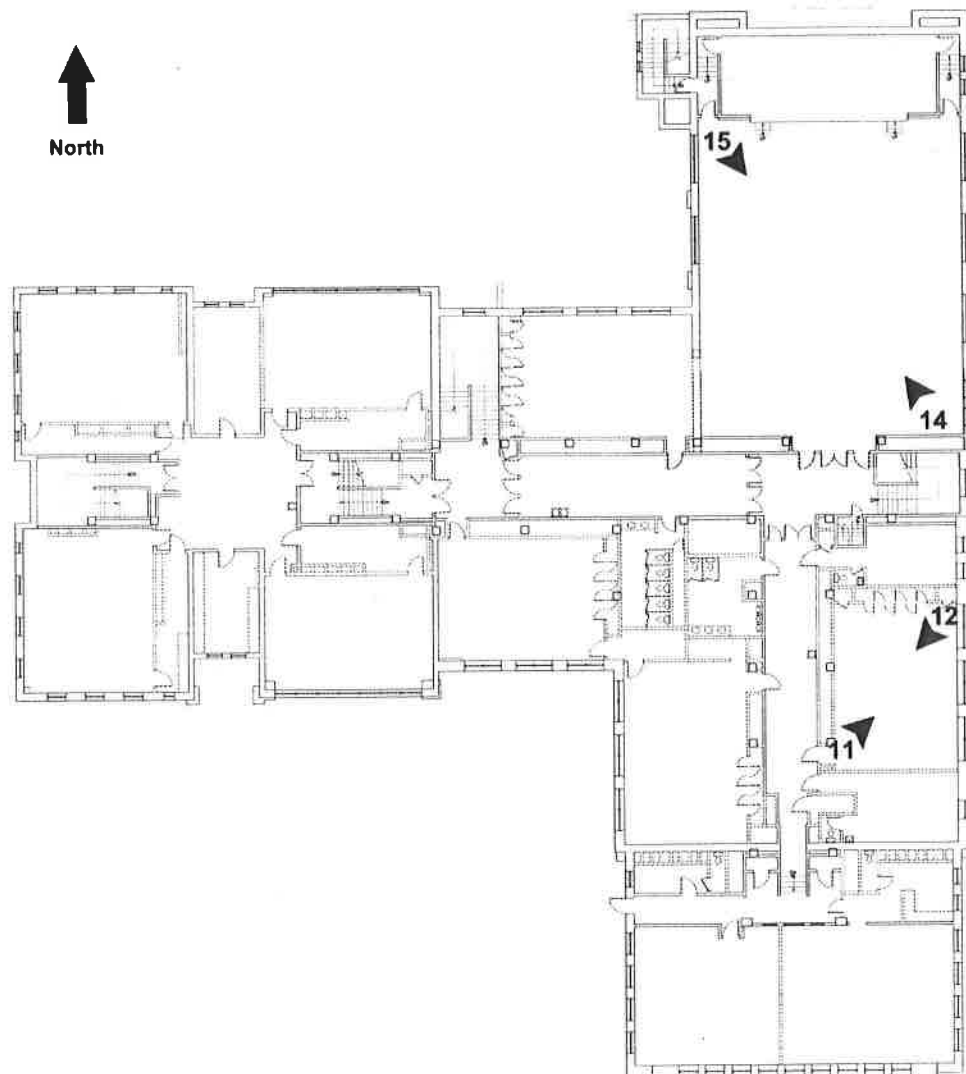


National Register of Historic Places
Continuation Sheet

Section number Figures Page 19

Mount Washington School
Name of Property
Jackson County, Missouri
County and State
Historic Resources of the Kansas City Missouri School
District Pre-1970
Name of multiple listing (if applicable)

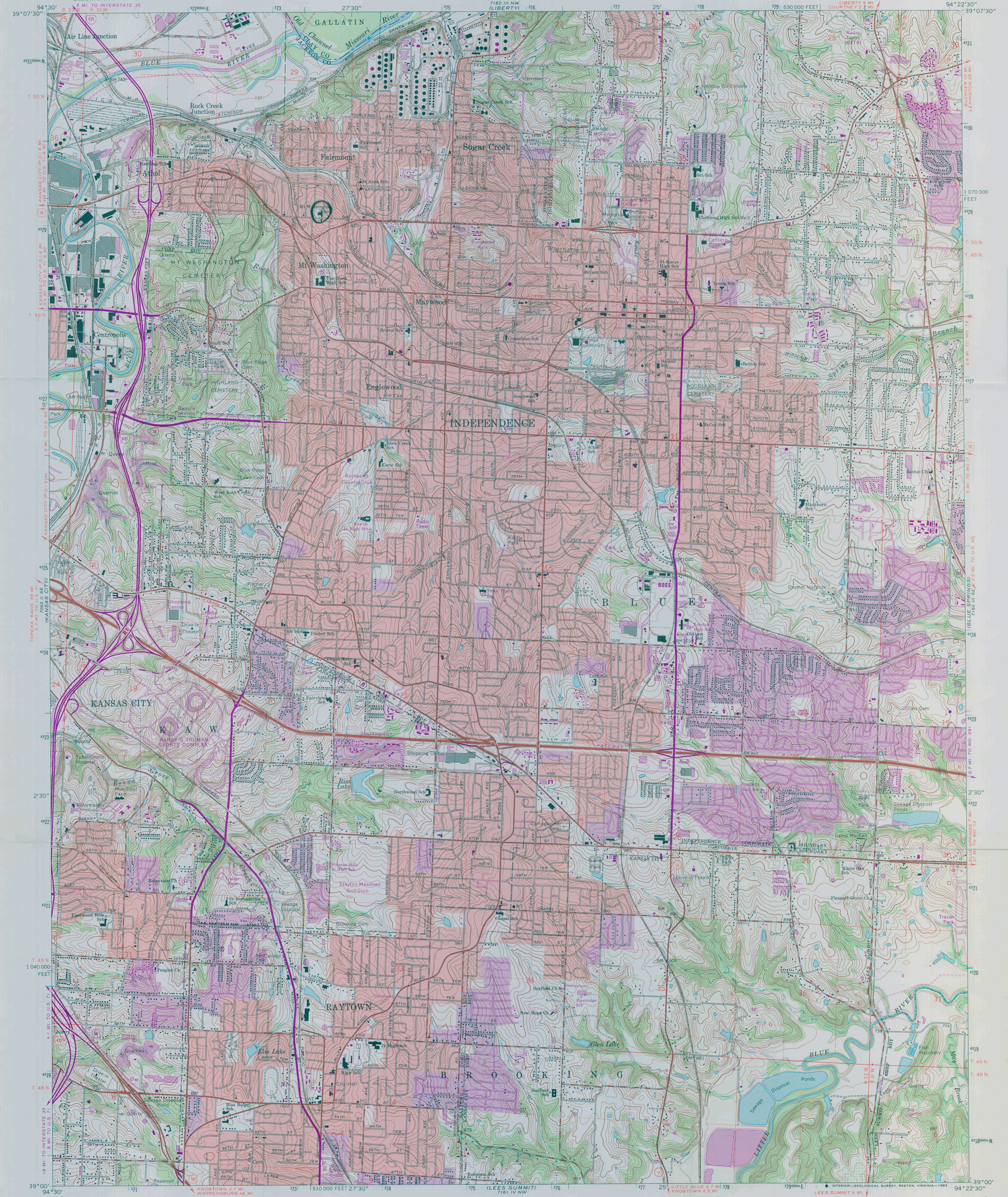
Figure 11. Photo Map. Second Floor



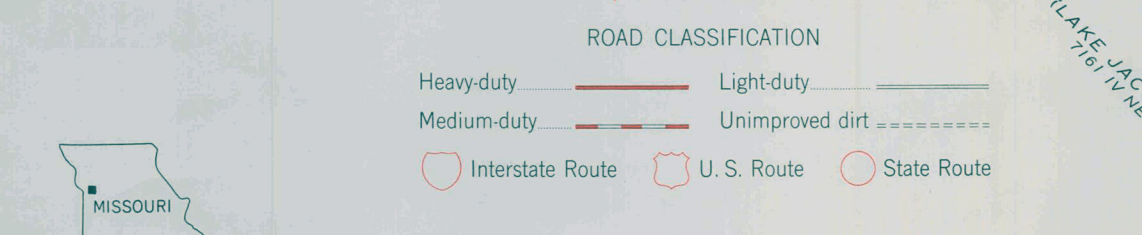
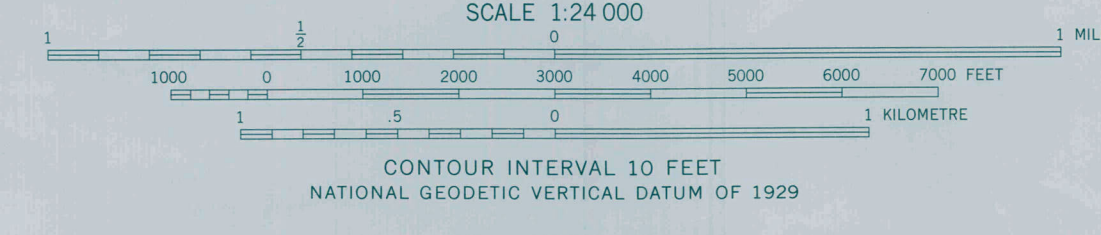
Mt. Washington School
570 S. Evanson, Independence,
Jackson Co., Missouri
15 373589 4329256

UNITED STATES
DEPARTMENT OF THE INTERIOR
GEOLOGICAL SURVEY

INDEPENDENCE QUADRANGLE
MISSOURI
7.5 MINUTE SERIES (TOPOGRAPHIC)



Mapped, edited, and published by the Geological Survey in cooperation with State of Missouri Geological Survey and Water Resources Control by USGS, USC&GS, and USCE
Planimetry by photogrammetric methods from aerial photographs taken 1955. Topography by planetable surveys 1934
Revised 1964
Polyconic projection. 1927 North American datum, 10,000-foot grid based on Missouri coordinate system, west zone 1000-metre Universal Transverse Mercator grid ticks, zone 15, shown in blue
To place on the predicted North American Datum 1983 move the projection lines 3 meters north and 19 meters east as shown by dashed corner ticks
Red tint indicates areas in which only landmark buildings are shown



THIS MAP COMPLIES WITH NATIONAL MAP ACCURACY STANDARDS FOR SALE BY U. S. GEOLOGICAL SURVEY, DENVER, COLORADO 80225, OR RESTON, VIRGINIA 22092 AND DIVISION OF GEOLOGY AND LAND SURVEY MISSOURI DEPARTMENT OF NATURAL RESOURCES, ROLLA, MISSOURI 65401 A FOLDER DESCRIBING TOPOGRAPHIC MAPS AND SYMBOLS IS AVAILABLE ON REQUEST

Revisions shown in purple compiled from aerial photographs taken 1970 and 1975. This information not field checked
Purple tint indicates extension of urban areas

INDEPENDENCE, MO.
N3900-W9422 5/7.5
1964
PHOTOREVISED 1970 AND 1975
AMS 7162 III SW-SERIES V879



1000 W
E Independence Ave

1000 W











MOUNT WASHINGTON ELEMENTARY SCHOOL



MT. WASHINGTON BAPTIST

WEDNESDAY 10:00 AM
SUNDAY 10:00 AM
SUNDAY 5:00 PM

Evansville Ave

100 W



OPERATING
WARD
CESS
TH
OF
POSE
ING
LENGTHS
WERMENT
WITH
SIBILITY

ST. MARGARET
WISCONSIN
SCHOOL

LEAVE NO EAT, DRINK OR DISHWASH

- 1. Wash your hands before and after eating.
- 2. Do not drink from the water fountain.
- 3. Do not drink from the water cooler.
- 4. Do not drink from the water tap.
- 5. Do not drink from the water pitcher.
- 6. Do not drink from the water bottle.
- 7. Do not drink from the water can.
- 8. Do not drink from the water jug.
- 9. Do not drink from the water container.
- 10. Do not drink from the water vessel.
- 11. Do not drink from the water receptacle.
- 12. Do not drink from the water container.
- 13. Do not drink from the water vessel.
- 14. Do not drink from the water receptacle.
- 15. Do not drink from the water container.
- 16. Do not drink from the water vessel.
- 17. Do not drink from the water receptacle.
- 18. Do not drink from the water container.
- 19. Do not drink from the water vessel.
- 20. Do not drink from the water receptacle.

101

EXIT

205

EXIT















UNITED STATES DEPARTMENT OF THE INTERIOR
NATIONAL PARK SERVICE

NATIONAL REGISTER OF HISTORIC PLACES
EVALUATION/RETURN SHEET

REQUESTED ACTION: NOMINATION

PROPERTY Mount Washington School
NAME:

MULTIPLE Kansas City, Missouri School District Pre-1970 MPS
NAME:

STATE & COUNTY: MISSOURI, Jackson

DATE RECEIVED: 3/08/13 DATE OF PENDING LIST: 4/03/13
DATE OF 16TH DAY: 4/18/13 DATE OF 45TH DAY: 4/24/13
DATE OF WEEKLY LIST:

REFERENCE NUMBER: 13000192

REASONS FOR REVIEW:

APPEAL: N DATA PROBLEM: N LANDSCAPE: N LESS THAN 50 YEARS: N
OTHER: N PDIL: N PERIOD: N PROGRAM UNAPPROVED: N
REQUEST: N SAMPLE: N SLR DRAFT: N NATIONAL: N

COMMENT WAIVER: N

ACCEPT RETURN REJECT 4.23.13 DATE

ABSTRACT/SUMMARY COMMENTS:

**Entered in
The National Register
of
Historic Places**

RECOM./CRITERIA _____

REVIEWER _____ DISCIPLINE _____

TELEPHONE _____ DATE _____

DOCUMENTATION see attached comments Y/N see attached SLR Y/N

If a nomination is returned to the nominating authority, the nomination is no longer under consideration by the NPS.

City of Independence

111 EAST MAPLE • P.O. BOX 1019 • INDEPENDENCE, MISSOURI 64051-0519

www.ci.independence.mo.us • (816) 325-7000



January 16, 2013

Ms. Tiffany Patterson
National Register Coordinator
Missouri Department of Natural Resources
State Historic Preservation Office
P.O. Box 176
Jefferson City, Missouri 65102-0176

RECEIVED

JAN 23 2013

STATE HISTORIC
PRESERVATION OFFICE

Re: *Mount Washington School (Historic Resources of the Kansas City, Missouri School District MPDF), 570 South Evanston Avenue, Independence, Jackson County*

Dear Ms. Patterson,

The City of Independence, as a Certified Local Government, is pleased to submit its review and comments on the draft National Register of Historic Places Registration Form for Mount Washington School. The Independence Heritage Commission reviewed the draft nomination at its January 8, 2013 meeting. No members of the public spoke either for or against the nomination; the Heritage Commission expressed its support for the nomination and voted unanimously to recommend "that the property is significant, retains integrity and is eligible for listing in the National Register of Historic Places." The City Manager, as the City's designee, has also reviewed the nomination and chosen to support it. These comments are included on the enclosed Missouri CLG National Register of Historic Places Nomination Review Report Form.

If you require additional information or have any questions, please do not hesitate to contact me by phone, at 816-325-7419, or via e-mail at hcarpini@indepmo.org. Thank you for your consideration of this project

Sincerely,

Heather L. Carpini
Historic Preservation Manager
City of Independence

Enclosure: Missouri CLG National Register of Historic Places Nomination Review Report Form

cc: School District of the City of Independence (owner)

Missouri CLG National Register of Historic Places
Nomination Review Report Form

RECEIVED

JAN 23 2013

STATE HISTORIC
PRESERVATION OFFICE

Property Name: Mount Washington School (Historic Resources of the Kansas City, Missouri

School District MPDF)

Address: 570 S. Evanston Ave., Independence, Jackson County

Certified Local Government: City of Independence

Date of public meeting at which nomination was reviewed: January 8, 2013

Criteria of Significance Please check below the responses appropriate to the nomination review.

NOTE: For more information on the criteria, see *National Register Bulletin: How to Apply the National Register Criteria for Evaluation*.

- Criterion A. Property is associated with events that have made a significant contribution to our history.
- Criterion B. Property is associated with the lives of persons significant in our past.
- Criterion C. Property embodies the distinctive characteristics of a type, period or method of construction, or represents a work of a master, or possesses high artistic values, or represents a significant and distinguishable entity whose components may lack individual distinction (a district).
- Criterion D. Property has yielded or may be likely to yield information important in prehistory or history.
- None of the Above

Integrity Please check below the responses appropriate to the nomination review.

NOTE: For more information on integrity, see *National Register Bulletin: How to Apply the National Register Criteria for Evaluation*.

- The property retains authentic historic character from its period of significance.
- The property has been significantly altered and no longer retains authentic historic character from its period of significance.

Review Comments Please check below the responses appropriate to the nomination review.

Commission/Board

- The commission/board recommends that the property is significant, retains integrity and is eligible for listing in the National Register of Historic Places.
- The commission/board recommends that the property does not meet the criteria of significance and/or no longer retains integrity and is not eligible for listing in the National Register of Historic Places.
- The commission/board chooses not to make a recommendation on the nomination. An explanation of the lack of a recommendation is attached.

Chief Elected Official

- The chief elected official recommends that the property is significant, retains integrity and is eligible for listing in the National Register of Historic Places.
- The chief elected official recommends that the property does not meet the criteria of significance and/or no longer retains integrity and is not eligible for listing in the National Register of Historic Places.
- The chief elected official chooses not to make a recommendation on the nomination. An explanation of the lack of a recommendation is attached.

Attach additional sheets for further comments.

CLG Commission/Board Chair or Representative

Print Name: MICHAEL W. CALVERT

Signature and Date: [Signature] 1/8/13

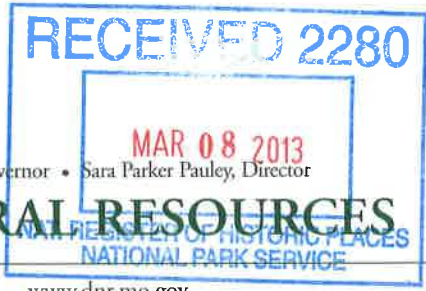
Chief Elected Official or Designee

Print Name: Robert Heacock

Signature and Date: [Signature] 1/11/13



Jeremiah W. (Jay) Nixon, Governor • Sara Parker Pauley, Director



www.dnr.mo.gov

DEPARTMENT OF NATURAL RESOURCES

Memorandum

Date: February 27, 2013

To: Keeper, National Register of Historic Places

From: Mark A. Miles, Deputy SHPO and Director, Missouri State Historic Preservation Office *MAM*

Subject: Mount Washington School, Jackson County, Missouri, National Register Nomination
Historic Resources of the Kansas City Missouri School District Pre-1970 MPDF

Our state review board, the Missouri Advisory Council on Historic Preservation, approved the above nomination on February 8, 2013. All owners and appropriate elected public officials were notified and provided at least thirty (30) days to comment on the above nomination in accordance with Section 36CFR60.6, interim regulations, using the exact notification format recommended by the National Register.

Please find enclosed the following documentation:

- 1 Original National Register of Historic Places registration form
- Multiple Property Documentation Form
- 16 Photographs
- 1 CD with electronic images
- 1 Original USGS map(s)
- Sketch map(s)/figures(s)/exhibits not on continuation sheets
- Piece(s) of correspondence
- 2 Other: CLG support letter and report form from Independence Heritage Commission

Comments:

- Please insure that this nomination is reviewed
- The enclosed owner objection(s) do do not constitute a majority of property owners.
- Other: _____