



UNITED STATES DEPARTMENT OF THE INTERIOR  
NATIONAL PARK SERVICE

NATIONAL REGISTER OF HISTORIC PLACES  
PROPERTY PHOTOGRAPH FORM

(Type all entries - attach to or enclose with photograph)

STATE Georgia	
COUNTY Oconee	
FOR NPS USE ONLY	
ENTRY NUMBER 70-5-10-0005	DATE 5/13/70

SEE INSTRUCTIONS

1. NAME

COMMON: Eagle Tavern

AND/OR HISTORIC:

2. LOCATION

STREET AND NUMBER:

U.S. Highway 129

CITY OR TOWN:

Watkinsville

STATE:

Georgia

CODE

13

COUNTY:

Oconee

CODE

219

3. PHOTO REFERENCE

PHOTO CREDIT: Bob Irwin

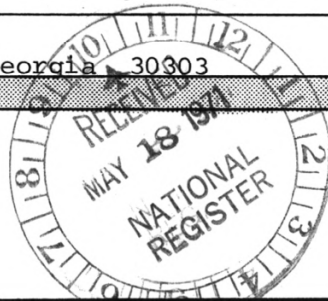
DATE OF PHOTO: Fall 1970

NEGATIVE FILED AT: Georgia Historical Commission  
116 Mitchell St., S.W., Atlanta, Georgia 30303

4. IDENTIFICATION

DESCRIBE VIEW, DIRECTION, ETC.

Front Facade, facing west.







UNITED STATES DEPARTMENT OF THE INTERIOR  
NATIONAL PARK SERVICE

NATIONAL REGISTER OF HISTORIC PLACES  
PROPERTY PHOTOGRAPH FORM

(Type all entries - attach to or enclose with photograph)

STATE Georgia	
COUNTY Oconee	
FOR NPS USE ONLY	
ENTRY NUMBER 70.5.10.0005	DATE 5/13/70

SEE INSTRUCTIONS

1. NAME

COMMON: Eagle Tavern

AND/OR HISTORIC:

2. LOCATION

STREET AND NUMBER:

U.S. Highway 129

CITY OR TOWN:

Watkinsville

STATE:

Georgia

CODE

13

COUNTY:

Oconee

CODE

219

3. PHOTO REFERENCE

PHOTO CREDIT: Bob Irwin

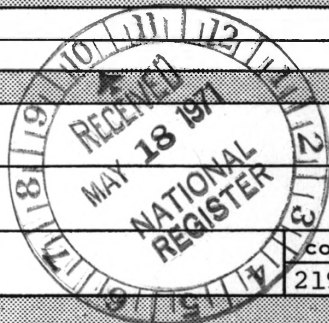
DATE OF PHOTO: Fall 1970

NEGATIVE FILED AT: Georgia Historical Commission  
116 Mitchell St., S.W., Atlanta, Georgia 30303

4. IDENTIFICATION

DESCRIBE VIEW, DIRECTION, ETC.

Rear Facade, facing east.





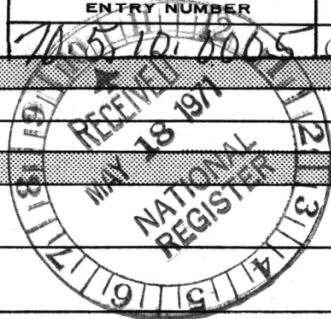


UNITED STATES DEPARTMENT OF THE INTERIOR  
NATIONAL PARK SERVICE

NATIONAL REGISTER OF HISTORIC PLACES  
PROPERTY PHOTOGRAPH FORM

(Type all entries - attach to or enclose with photograph)

STATE Georgia	
COUNTY Oconee	
FOR NPS USE ONLY	
ENTRY NUMBER 70-5510-8065	DATE 5/13/70



1. NAME

COMMON: Eagle Tavern

AND/OR HISTORIC:

2. LOCATION

STREET AND NUMBER:  
U.S. Highway 129

CITY OR TOWN:  
Watkinsville

STATE: Georgia	CODE 13	COUNTY: Oconee	CODE 219
-------------------	------------	-------------------	-------------

3. PHOTO REFERENCE

PHOTO CREDIT: Bob Irwin

DATE OF PHOTO: Fall 1970

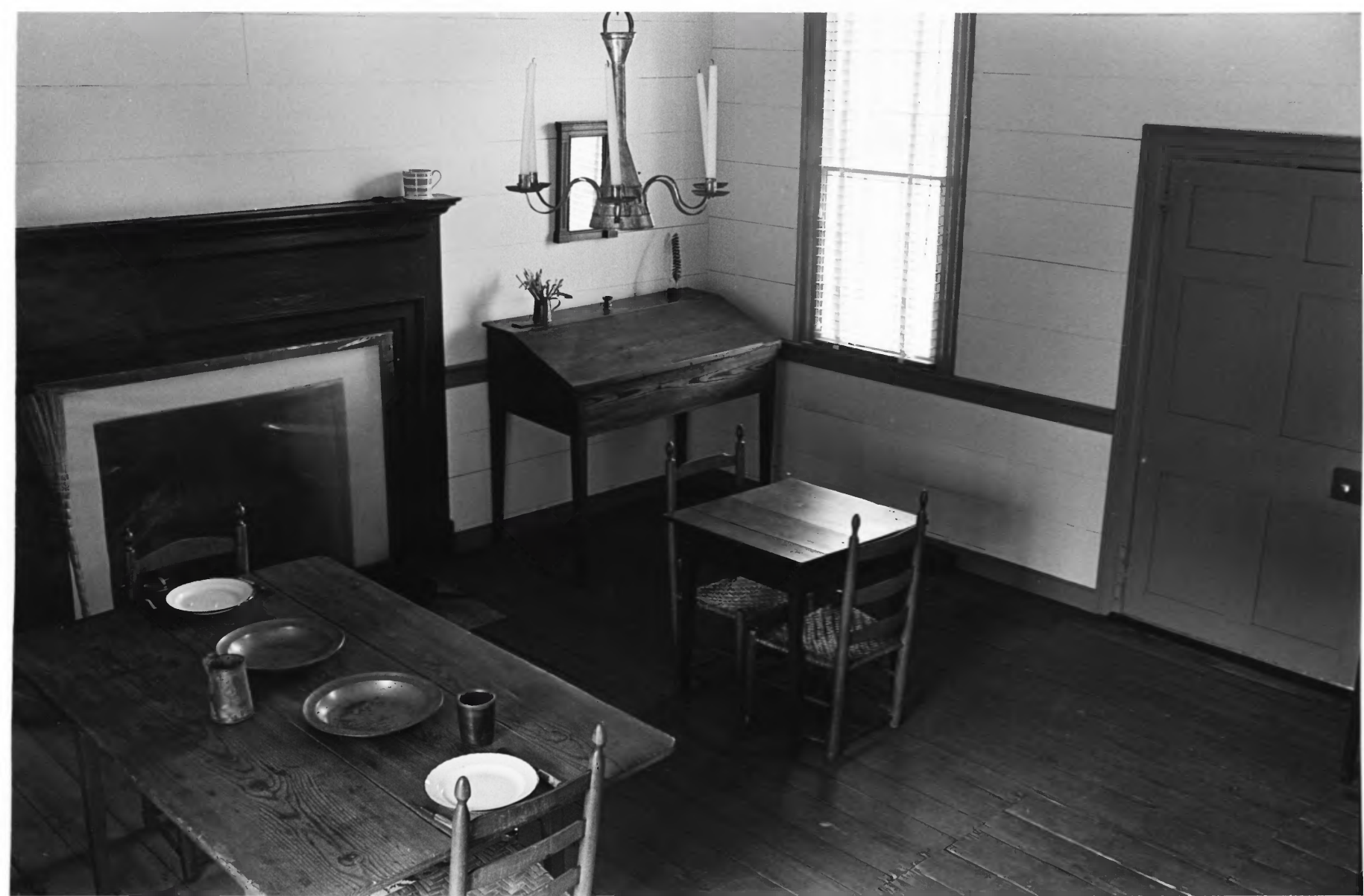
NEGATIVE FILED AT: Georgia Historical Commission  
116 Mitchell St., S.W., Atlanta, Georgia 30303

4. IDENTIFICATION

DESCRIBE VIEW, DIRECTION, ETC.

Looking north into store area from tavern room.

SEE INSTRUCTIONS



UNITED STATES DEPARTMENT OF THE INTERIOR  
NATIONAL PARK SERVICE

NATIONAL REGISTER OF HISTORIC PLACES  
PROPERTY PHOTOGRAPH FORM

(Type all entries - attach to or enclose with photograph)

STATE Georgia	
COUNTY Oconee	
FOR NPS USE ONLY	
ENTRY NUMBER 70.5.10.000.5	DATE 5/13/70

1. NAME

COMMON: Eagle Tavern

AND/OR HISTORIC:

2. LOCATION

STREET AND NUMBER:

U.S. Highway 129

CITY OR TOWN:

Watkinsville

STATE:

Georgia

CODE

13

COUNTY:

Oconee

CODE

219

3. PHOTO REFERENCE

PHOTO CREDIT: Bob Irwin

DATE OF PHOTO: Fall 1970

NEGATIVE FILED AT: Georgia Historical Commission

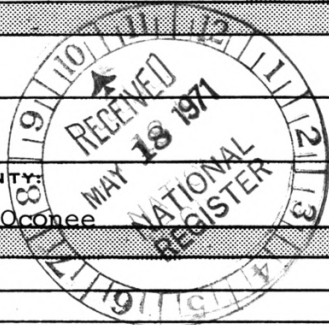
116 Mitchell St., S.W., Atlanta, Georgia 30303

4. IDENTIFICATION

DESCRIBE VIEW, DIRECTION, ETC.

Tavern Room, looking southwest.

SEE INSTRUCTIONS







UNITED STATES DEPARTMENT OF THE INTERIOR  
NATIONAL PARK SERVICE

NATIONAL REGISTER OF HISTORIC PLACES  
PROPERTY PHOTOGRAPH FORM

(Type all entries - attach to or enclose with photograph)

STATE Georgia	
COUNTY Oconee	
FOR NPS USE ONLY	
ENTRY NUMBER 10.5-10.0005	DATE 5/13/70

1. NAME

COMMON: Eagle Tavern

AND/OR HISTORIC:

2. LOCATION

STREET AND NUMBER:

U.S. Highway 129

CITY OR TOWN:

Watkinsville

STATE:

Georgia

CODE

13

COUNTY:

Oconee

CODE

219

3. PHOTO REFERENCE

PHOTO CREDIT: Bob Irwin

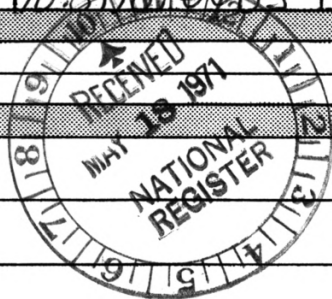
DATE OF PHOTO: Fall 1970

NEGATIVE FILED AT: Georgia Historical Commission  
116 Mitchell St., S.W., Atlanta, Georgia 30303

4. IDENTIFICATION

DESCRIBE VIEW, DIRECTION, ETC.

Upstairs bedroom, looking south.



SEE INSTRUCTIONS