



Photo # 1021

CECIL'S MILL HISTORIC DISTRICT  
Great Mills, St. Mary's County, Md.

Photo by Pamela James, MHT

January 1976

Exterior

From southeast

AUG 2 1977

JAN 30 1978

house

house from SE



*Photo # 2 of 21*

CECIL'S MILL HISTORIC DISTRICT

Great Mills, St. Mary's County, Md.

Photo by Pamela James, MHT

January 1976

JAN 30 1978

Exterior of Mill

West elevation

AUG 2 1977



Photo # 3921

CECIL'S MILL HISTORIC DISTRICT  
Great Mills, St. Mary's County, Md.  
Photo by Pamela James, MHT  
January 1976  
Store  
East elevation

JAN 30 1978

AUG 2 1977

east elevation, store



*Photo #4 of 21*

CECIL'S MILL HISTORIC DISTRICT  
Great Mills, St. Mary's County, Md.  
Photo by John K. Brutton  
April 1976  
Cecil's Mill  
Rear (East) elevation

JAN 30 1978

AUG 2 1977





PROPERTY OF THE NATIONAL REGISTER

*Photo #5 of 21*

CECIL'S MILL HISTORIC DISTRICT  
Great Mills, St. Mary's County, Md.  
Photo by Pamela James, MHT  
January 1976  
Outbuildings  
from southeast

JAN 30 1978

AUG 2 1977

*outbldgs. from SE*



PROPERTY OF THE NATIONAL REGISTER

JAN 30 1978

Photo # 6921

Cecil Mill, St. Mary's County, Maryland

Pamela James, Maryland Historical Trust,  
Annapolis, Md. 21401 Jan. 1976

South end of mill  
AUG 2 1977



CECIL'S MILL HISTORIC DISTRICT  
Great Mills, St. Mary's County, Md.  
Photo by John K. Brutton  
April 1976  
Cecil's Mill  
North facade  
Gearhouse for saw mill on right

AUG 2 1977

JAN 30 1978

7/76 J.K.B.

Photo # 7 of 21  
with (now cleared)

PROPERTY OF THE NATIONAL REGISTER



J.K.B.

CECIL'S MILL HISTORIC DISTRICT  
Great Mills, St. Mary's County, Md.  
Photo by John K. Brutton

April 1976

Second floor, view of dowel mounted  
shaker

The Level Sifter AUG 2 1977

JAN 3 0 1978

*copying see inventory*

*Photo # 8721*

**PROPERTY OF THE NATIONAL REGISTER**





CECIL'S MILL HISTORIC DISTRICT  
Great Mills, St. Mary's County, Md.  
Photo by John K. Brutton 4/76  
Second floor, Receiving separator  
Wolf Perfected Compound Drive  
Receiving Separator AUG 2 1977  
Built by the Wolf Co., Chambersburg  
Pa. Size 770, No. 913 Style AA

Second Floor, Receiving Separator 4/76 J.K.B.

WOLF PERFECTED COMPOUND DRIVE RECEIVING SEPARATOR

BUILT BY THE WOLF CO., CHAMBERSBURG PA.

Size 770

No. 913

Style AA

Photo  
#9721

JAN 30 1978

PROPERTY OF THE NATIONAL REGISTER



CECIL'S MILL HISTORIC DISTRICT  
Great Mills, St. Mary's County, Md.  
Photo by John K. Brutton  
April 1976  
Main Drive, Cellar  
May have been part of original mill

AUG 2 1977

JAN 30 1978

*JKB.*

*Photo  
#  
10921*

**PROPERTY OF THE NATIONAL REGISTER**



CECIL'S MILL HISTORIC DISTRICT  
Great Mills, St. Mary's County, Md.  
Photo by John K. Brutton  
April 1976

1st Floor, Equipment      AUG 2 1977  
South view, East bay  
Double Scouner machine      JAN 30 1978  
Flour packer-compact bagger

*Photo #*

*110721*

**PROPERTY OF THE NATIONAL REGISTER**



CECIL'S MILL HISTORIC DISTRICT  
Great Mills, St. Mary's County, Md.  
Photo by John K. Brutton  
April 1976

JAN 30 1978

1st Floor, Equipment  
North view, East bay  
Elevator chutes, galvanized steel  
dust collector. double millstones

AUG 2 1977

J.K.B

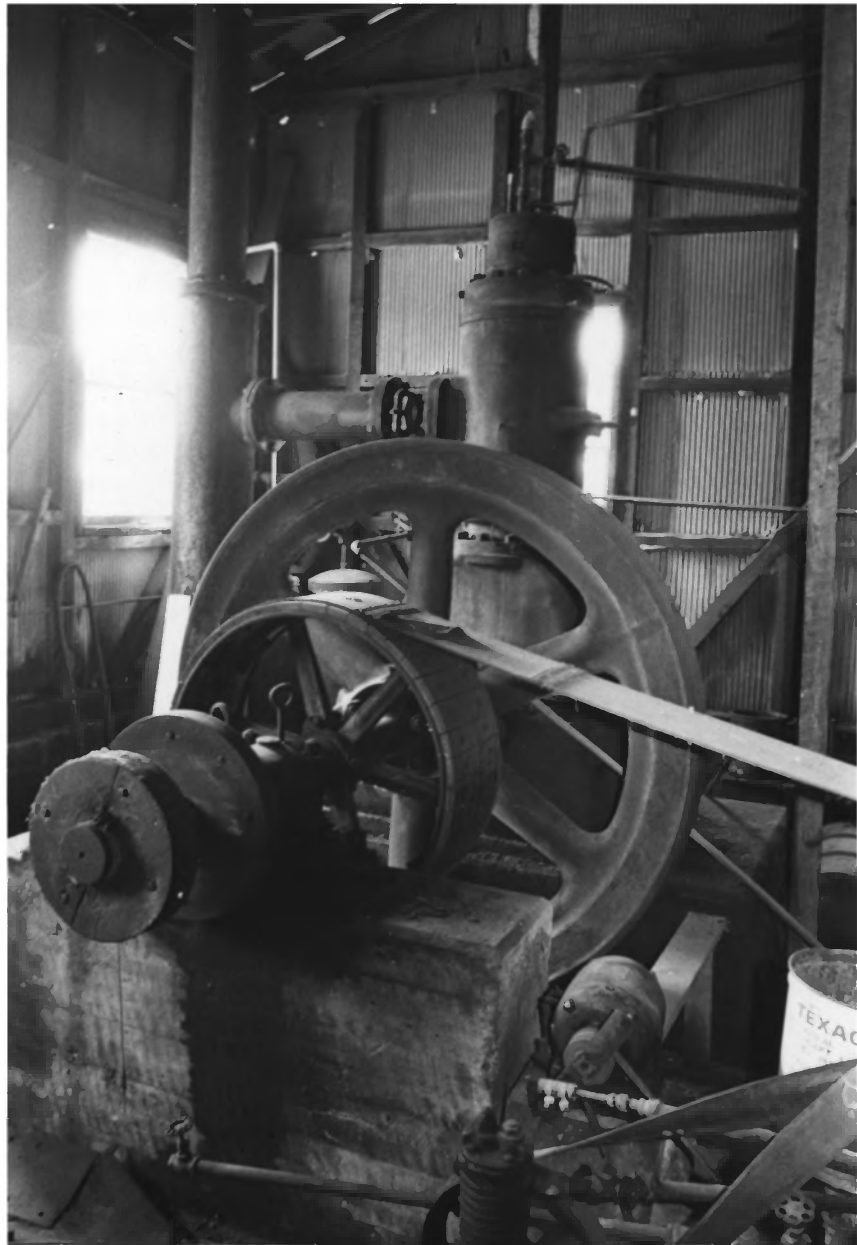
Photo

#12 of 21

-- exits chaff to exterior of bldg  
Feed corn into stones above.

PROPERTY OF THE NATIONAL REGISTER





CECIL'S MILL HISTORIC DISTRICT  
Great Mills, St. Mary's County, Md.

Photo by John K. Brutton

April 1976

AUG 2 1977

Diesel Engine

Main Drive installed c. 1924

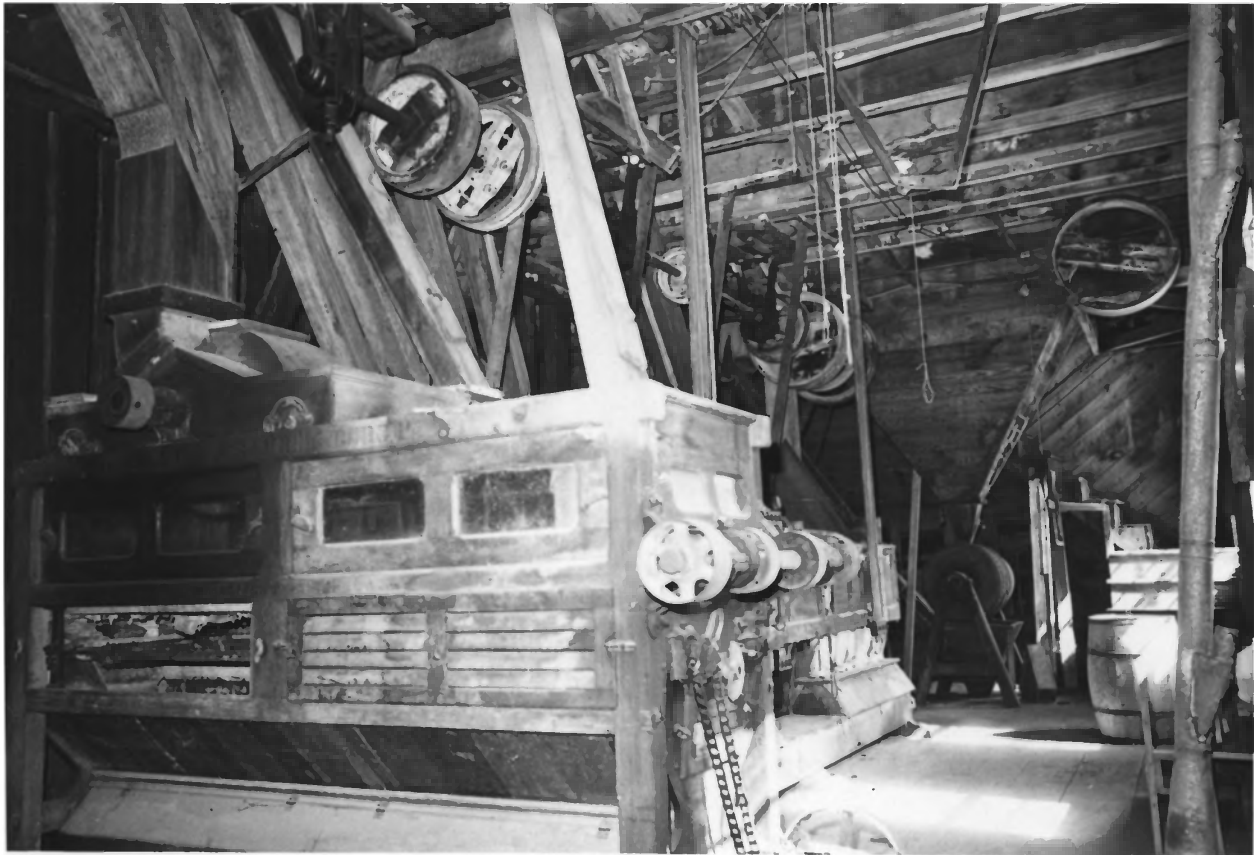
Fairbanks & Morse Diesel Generator

JAN 30 1978

*Photo*

*#  
13921*

**PROPERTY OF THE NATIONAL REGISTER**



CECIL'S MILL HISTORIC DISTRICT  
Great Mills, St. Mary's County, Md.

Photo by John K. Brutton

April 1976

Second Floor of Mill

Wolf Company Middling Purifier

Speed 550 Rev.

Directly behind, level sifter, fed

by chutes.

To right-steel drum for mixing, fed  
by hopper above. Steps lead to 3rd  
floor under gable.

AUG 2 1977

JAN 30 1978

*Photo*  
*#14 of 21*

PROPERTY OF THE NATIONAL ARCHIVES



CECIL'S MILL HISTORIC DISTRICT  
Great Mills, St. Mary's County, Md.  
Photo by John K. Brutton  
April 1976

Diesel Engine, installed c. 1924  
Once drove electric generator for  
all of Leonardtown, Md.

JAN 30 1978

AUG 2 1977

FAIRBANKS + MORSE DIESEL GENERATOR

Y ENGINE

HP 50

RPM 257

STYLE Y

PATENT + PAT. APPLIED FOR —

*Photo*  
# 15721

PROPERTY OF THE NATIONAL REGISTER



CECIL'S MILL HISTORIC DISTRICT  
Great Mills, St. Mary's County, Md.  
Photo by John K. Brutton  
April 1976

AUG 2 1977

"Case" Double Roller Mill  
1st floor. Railing on right is  
around unused wheel of main drive.

J.K.B.

Photo  
#16721

JAN 30 1978

**PROPERTY OF THE NATIONAL REGISTER**





CECIL'S MILL HISTORIC DISTRICT  
Great Mills, St. Mary's County, Md.

Photo by John K. Brutton

April 1976

AUG 2 1977

South wall, 1st floor, west bay

Roller Mill-foreground

Along west wall is flour & bag bin

JAN 3 0 1978

J.K.B.

Photo

#

17 of 21

PROPERTY OF THE NATIONAL REGISTER



CECIL'S MILL HISTORIC DISTRICT  
Great Mills, St. Mary's County, Md.  
Photo by John K. Brutton  
April 1976  
Office, 1st floor  
CECIL'

176

*Photo*

*#18921*

JAN 30 1978    AUG 2 1977

**PROPERTY OF THE NATIONAL REGISTER**



CECIL'S MILL HISTORIC DISTRICT  
Great Mills, St. Mary's County, Md.  
Photo by John K. Brutton  
April 1976  
North cellar wall showing store  
believed to be from 1810 Mill

JAN 30 1978      AUG 2 1977

7/76  
Photo  
# 19921

PROPERTY OF THE NATIONAL REGISTER



CECIL'S MILL HISTORIC DISTRICT  
Great Mills, St. Mary's County, Md.  
Photo by John K. Brutton

April 1976

Mill, first floor

Monarch Corn Graper, Style TT, No.  
60 ca.1900-20.

JAN 30 1978

AUG 2 1977

*Photo*

*#20 g 21*

**PROPERTY OF THE NATIONAL REGISTER**





CECIL'S MILL HISTORIC DISTRICT  
Great Mills, St. Mary's County, Md.  
Photo by John K. Brutton  
April 1976  
Mill  
Overshot wheel and gearing

JAN 30 1978

AUG 2 1977

J.K.B.  
John K Brutton

Photo

# 21 of 21

PROPERTY OF THE NATIONAL REGISTER