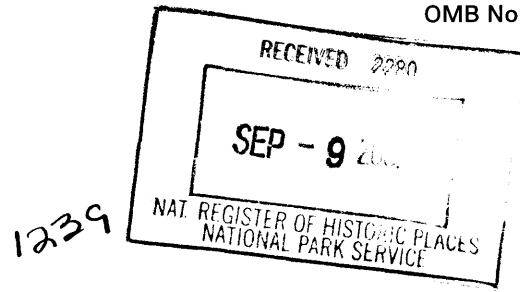


AUG 27 2002

United States Department of the Interior
National Park Service

**NATIONAL REGISTER OF HISTORIC PLACES
REGISTRATION FORM**



This form is for use in nominating or requesting determinations for individual properties and districts. See instructions in How to Complete the National Register of Historic Places Registration Form (National Register Bulletin 16A). Complete each item by marking "x" in the appropriate box or by entering the information requested. If any item does not apply to the property being documented, enter "N/A" for "not applicable." For functions, architectural classification, materials, and areas of significance, enter only categories and subcategories from the instructions. Place additional entries and narrative items on continuation sheets (NPS Form 10-900a). Use a typewriter, word processor, or computer, to complete all items.

1. Name of Property

historic name Lincoln School

other names/site number

2. Location

street & number 318 East 7th Street not for publication N/A
city or town Davenport vicinity N/A
state Iowa code IA county Scott code 163 zip code 52803

3. State/Federal Agency Certification

As the designated authority under the National Historic Preservation Act of 1966, as amended, I hereby certify that this nomination request for determination of eligibility meets the documentation standards for registering properties in the National Register of Historic Places and meets the procedural and professional requirements set forth in 36 CFR Part 60. In my opinion, the property meets does not meet the National Register Criteria. I recommend that this property be considered significant nationally statewide locally.

(See continuation sheet for additional comments.)

Rowell J. Soike August 28, 2002
Signature of certifying official Date

STATE HISTORICAL SOCIETY OF IOWA

State or Federal agency and bureau

In my opinion, the property meets does not meet the National Register criteria.
(See continuation sheet for additional comments.)

Signature of commenting or other official Date

State or Federal agency and bureau

4. National Park Service Certification

I hereby certify that this property is:

- entered in the National Register
See continuation sheet.
- determined eligible for the National Register
See continuation sheet.
- determined not eligible for the National Register
- removed from the National Register
- other (explain):

Daniel J. Vician 10/24/02

D _____ Signature of the Keeper Date of Action

5. Classification

- Ownership of Property**
(Check as many boxes as apply.)
- private
 - public-local
 - public-State
 - public-Federal

- Category of Property**
(Check only one box.)
- building(s)
 - district
 - site
 - structure
 - object

Number of Resources within Property

Contributing	Noncontributing	
<u> 1 </u>	<u> 0 </u>	buildings
<u> </u>	<u> </u>	sites
<u> </u>	<u> </u>	structures
<u> </u>	<u> </u>	objects
<u> 1 </u>	<u> 0 </u>	Total

Number of contributing resources previously listed in the National Register: 0

Name of related multiple property listing (enter "N/A" if property is not part of a multiple property listing):

Public Schools for Iowa: Growth and Change, 1848-1966

6. Function or Use

Historic Functions (enter categories from instructions)

Cat: EDUCATION Sub: School

Current Functions (enter categories from instructions)

Cat: EDUCATION Sub: School

7. Description

Architectural Classification (enter categories from instructions):

LATE 19TH AND 20TH CENTURY REVIVALS

Materials (enter categories from instructions):

foundation Concrete

roof Asphalt

walls Brick

other

Narrative Description (Describe the historic and current condition of the property on one or more continuation sheets.)

8. Statement of Significance

Applicable National Register Criteria

(Mark "x" in one or more boxes for the criteria qualifying the property for National Register listing.)

- A Property is associated with events that have made a significant contribution to the broad patterns of our history.
- B Property is associated with the lives of persons significant in our past.
- C Property embodies the distinctive characteristics of a type, period, or method of construction or represents the work of a master, or possesses high artistic values, or represents a significant and distinguishable entity whose components lack individual distinction.
- D Property has yielded, or is likely to yield information important in prehistory or history.

Criteria Considerations

(Mark "x" in all the boxes that apply.)

- A owned by a religious institution or used for religious purposes
- B removed from its original location
- C a birthplace or a grave
- D a cemetery
- E a reconstructed building, object, or structure
- F a commemorative property
- G less than 50 years of age or achieved significance within the past 50 years

Areas of Significance (enter categories from instructions):

Architecture
 Social History

Period of Significance

1940-1952

Significant Dates

1940
1952

Significant Person (complete if Criterion B is marked above)

N/A

Cultural Affiliation

Architect/Builder

Muesse, Howard S.
Langlois Construction Co

Narrative Statement of Significance (Explain the significance of the property on one or more continuation sheets.)

9. Major Bibliographical References

(Cite the books, articles, and other sources used in preparing this form on one or more continuation sheets.)

Previous documentation on file (NPS)

- preliminary determination of individual listing (36 CFR 67) has been requested.
- previously listed in the National Register
- previously determined eligible by the National Register
- designated a National Historic Landmark
- recorded by Historic American Buildings Survey #
- recorded by Historic American Engineering Record #

Primary Location of Additional Data

- State Historic Preservation Office
- Other State agency
- Federal agency
- Local government
- University
- Other

Name of repository

10. Geographical Data

Acreage of Property: 3.31 Acres

UTM References (Place additional UTM references on a continuation sheet)

	Zone	Easting	Northing	Zone	Easting	Northing
1	<u>15</u>	<u>702720.251</u>	<u>4599905.835</u>	3	<u> </u>	<u> </u>
2	<u> </u>	<u> </u>	<u> </u>	4	<u> </u>	<u> </u>

See continuation sheet.

Verbal Boundary Description (Describe the boundaries of the property on a continuation sheet.)

Boundary Justification (Explain why the boundaries were selected on a continuation sheet.)

11. Form Prepared By

name/title Peggy Beedle, Architectural Historian

organization The Louis Berger Group, Inc.

date 7/24/02

street & number 950 50th Street

telephone 319-373-3043

city or town Marion

state Iowa

zip code 52302

Additional Documentation

(Submit the following items with the completed form.)

Continuation Sheets

Maps: A USGS map (7.5 or 15 minute series) indicating the property's location.

A sketch map for historic districts and properties having large acreage or numerous resources.

Photographs: Representative black and white photographs of the property.

Additional items (check with the SHPO or FPO for any additional items)

Property Owner

(Complete this item at the request of the SHPO or FPO.)

name Davenport Community Schools

street & number 1606 Brady Street #10100

telephone 563_336_5000

city or town Davenport

state Iowa

zip code 52803

Paperwork Reduction Act Statement: This information is being collected for applications to the National Register of Historic Places to nominate properties for listing or determine eligibility for listing, to list properties, and to amend existing listings. Response to this request is required to obtain a benefit in accordance with the National Historic Preservation Act, as amended (16 U.S.C. 470 et seq.).

Estimated Burden Statement: Public reporting burden for this form is estimated to average 18.1 hours per response including the time for reviewing instructions, gathering and maintaining data, and completing and reviewing the form. Direct comments regarding this burden estimate or any aspect of this form to the Chief, Administrative Services Division, National Park Service, P.O. Box 37127, Washington, DC 20013-7127; and the Office of Management and Budget, Paperwork Reductions Project (1024-0018), Washington, DC 20503.

United States Department of the Interior
National Park Service

NATIONAL REGISTER OF HISTORIC PLACES CONTINUATION SHEET

Section 7 Page 1

name of property: Lincoln School
county, state: Scott County, Iowa

DESCRIPTION SUMMARY

The Lincoln School was constructed in 1939, and designed by the Chicago architectural firm of Smith & Childs, and the Davenport architect Howard S. Muesse in a Colonial Revival style. The Langlois Construction Company was the general contractor. The Lincoln School is located East Seventh Street, between Pershing and Iowa streets. It is set on a steep promontory, and much of downtown Davenport is visible from the front entrance. It is located in a neighborhood of old houses, apartments, and commercial buildings.

GENERAL DESCRIPTION

The school is three stories in height, set on basement and of steel-reinforced concrete and load-bearing brick construction. Above ground, it is finished with light brown brick and accented with limestone. It has a flat roof. There was a classroom wing added in 1952, and second story classrooms on the projecting ends of the school. There are no outbuildings. The school is composed of the two-story I-shaped classroom block, with the auditorium/gymnasium ell centered on the north elevation. The third floor, which consists of the library, science, music and art rooms, is set atop the auditorium/gymnasium ell. In 1952 an addition was constructed on the northwest corner of the school.

The symmetrical, south-facing front facade of the school faces East Seventh Street and is composed of the main entrance, and classrooms on either side. The kindergarten room and the west end classroom project beyond the plane of the front wall, with bay windows on the south, and separate entrances. The main entrance is dominated by four Corinthian columns that rise to the roof. The entrance is a double door with a large transom, capped with decorative stone. Wrought iron balconies project from the second story library windows. The balanced fenestration consists of six-over-six light, double-hung windows, with a six light transom above. The windows are set in groups of two, with decorative stone lintels, which are connected to a stone belt-course.

The east and west elevations are symmetrical, with entrances composed of double doors with transoms and sidelights, flanked by the balanced fenestration of the classroom windows. The addition is constructed of the same brick, but has band of four windows separated by brick pilasters. The north elevation is composed of the auditorium/gymnasium ell, topped with the round wall of the music room. The Lincoln School has retained most of its original exterior finishes.

The interior arrangement features a central octagonal hall, with the community room entrance in the center, flanked by the auditorium and gymnasium doors. The hall is adorned with fluted square columns, wood paneling, a Greek key frieze, and terrazzo floor. The corridor, with glazed tile walls, extends to the exits on the east and west elevations. The kindergarten room is on the far east end. The second floor contains the library, set over the main entrance, and the upper level classrooms. The third floor contains the music, science and art rooms.

The community room has a large glass block window on the north, curved moldings over the storage on the sides, and a tile floor. The auditorium has a semi-octagonal front, with vertical panels on the walls, a small balcony, and the original brocaded seating. The gymnasium is finished with brick and glazed tiles. The balcony has been closed off.

United States Department of the Interior
National Park Service

**NATIONAL REGISTER OF HISTORIC PLACES
CONTINUATION SHEET**

Section 7 Page 2

name of property: Lincoln School
county, state: Scott County, Iowa

The kindergarten room features a fireplace on the north wall, a balcony playroom on the west, with a child-sized cloakroom and kitchen beneath. The fish pond is set underneath the south bay window, surrounded by knotty pine bookcases and storage.

The classrooms have three sets of double windows, storage on the interior walls, tile floors, original blackboards with wood chalk trays, and block glass insets in the interior wall to bring light into the hall.

The art and science rooms on the third floor have storage for the specialized equipment needed for those subjects. The music room has a curved north wall, and the side walls narrow to the entrance. The original large side windows have been bricked over.

United States Department of the Interior
National Park Service

NATIONAL REGISTER OF HISTORIC PLACES CONTINUATION SHEET

Section 8 Page 3

name of property: Lincoln School
county, state: Scott County, Iowa

Architect/Builder Smith & Childs

SIGNIFICANCE SUMMARY

The Lincoln School is locally significant under Criterion A, as an example of a PWA school, and Criterion C as an excellent example of a modern elementary school. Evaluation of the Lincoln Elementary School for National Register eligibility is based upon criteria outlined in the Multiple Property Documentation Form *Public Schools for Iowa: Growth and Change, 1848-1966* (Beedle and Deiber 2002), under the property type "Elementary School." The school is typical of the modern elementary school with large kindergarten rooms and facilities for community use. Funding from the PWA helped many communities to construct public buildings during the depression. The school has retained its integrity of location, design, setting, materials, workmanship, feeling and association.

RESOURCE HISTORY AND HISTORIC CONTEXT

In the 1920s the Davenport Board of Education surveyed the eighteen elementary schools regarding modern facilities, projected city growth, and the direction of this growth. They projected that the number of elementary school students would rise by almost three thousand between 1930 and 1950, however no building plan was developed based on these statistics. By 1936, the elementary population had risen to the 1950 figure, and new buildings were needed. Twelve of the old elementary schools were to be abandoned, and six new ones constructed: Monroe Elementary, Lincoln School, Madison Elementary, Washington Elementary, Jefferson Elementary, and McKinley Elementary. This was a PWA project; the federal government contributed 45% of the 2.5 million dollars needed to fund the project.

The Chicago architectural firm of Smith & Childs designed the floor plans, which were similar for all six schools. Local architectural firms were hired to design the stylistic features. The elementary buildings were "designed to accommodate a new instructional plan. The buildings contained central libraries, special science, art and vocal music rooms as well as gymnasiums and auditoriums" (Davenport Democrat 30 June 1938 page 2).

In addition each school had a community room, or a "social and recreational unit for the citizenry." Besides this room, the gymnasium, auditorium, music, science and art rooms, which were located in the center of the school: "These compactly grouped activity units may be completely separated from the classroom areas for use at night as a social center" (Schmitt and Childs 1941:22).

Ground was broken in 1939. Lincoln was the only school constructed on a previous school site. The schools opened in the fall of 1940. Teachers were positive in their assessment of the schools. Kindergarten rooms, located at the ends of the buildings, had separate entrances and outdoor play areas. The three upper grades spent half of the day in the homeroom, and half in the special rooms, as an introduction to the junior/senior high school regimen. Students at lunch went home or ate in the balcony overlooking the gymnasium. As the student population grew, the gymnasium was used as a lunch room.

After the end of World War II, there was a population increase in Davenport. In 1952, besides constructing second-story classrooms on the projecting ends of the school, a two-story classroom addition, with a cafeteria in the lower

United States Department of the Interior
National Park Service

**NATIONAL REGISTER OF HISTORIC PLACES
CONTINUATION SHEET**

Section 8 Page 4

name of property: Lincoln School
county, state: Scott County, Iowa

level, was constructed on the northwest corner of Lincoln Elementary. It was constructed of the same brick, but has a different fenestration pattern. Another elementary school, Hoover, was constructed in 1955 to relieve some of the congestion. Enrollment continued to rise through the 1950s and 1960s. The 1970s began a decline that is still going today.

United States Department of the Interior
National Park Service

**NATIONAL REGISTER OF HISTORIC PLACES
CONTINUATION SHEET**

Section 9 Page 5

name of property: Lincoln School
county, state: Scott County, Iowa

MAJOR BIBLIOGRAPHICAL REFERENCES

Baker, Mary A.

1978 *A History of Davenport Schools*. Davenport Community School District, Davenport, Iowa.

Davenport Community School District

1980 *A History of Washington School*. Davenport Community School District, Davenport, Iowa.

Davenport Democrat

1938 "12 Elementary Schools Abandoned in Favor of Six New" *Davenport Democrat*. June 30, 1938, page 2.

Schmitt, Irvin H. and Frank A. Childs

1941 "Six Schools With Social Centers" *Nation's Schools* pp 20-22 Volume 27 February 1941.

United States Department of the Interior
National Park Service

**NATIONAL REGISTER OF HISTORIC PLACES
CONTINUATION SHEET**

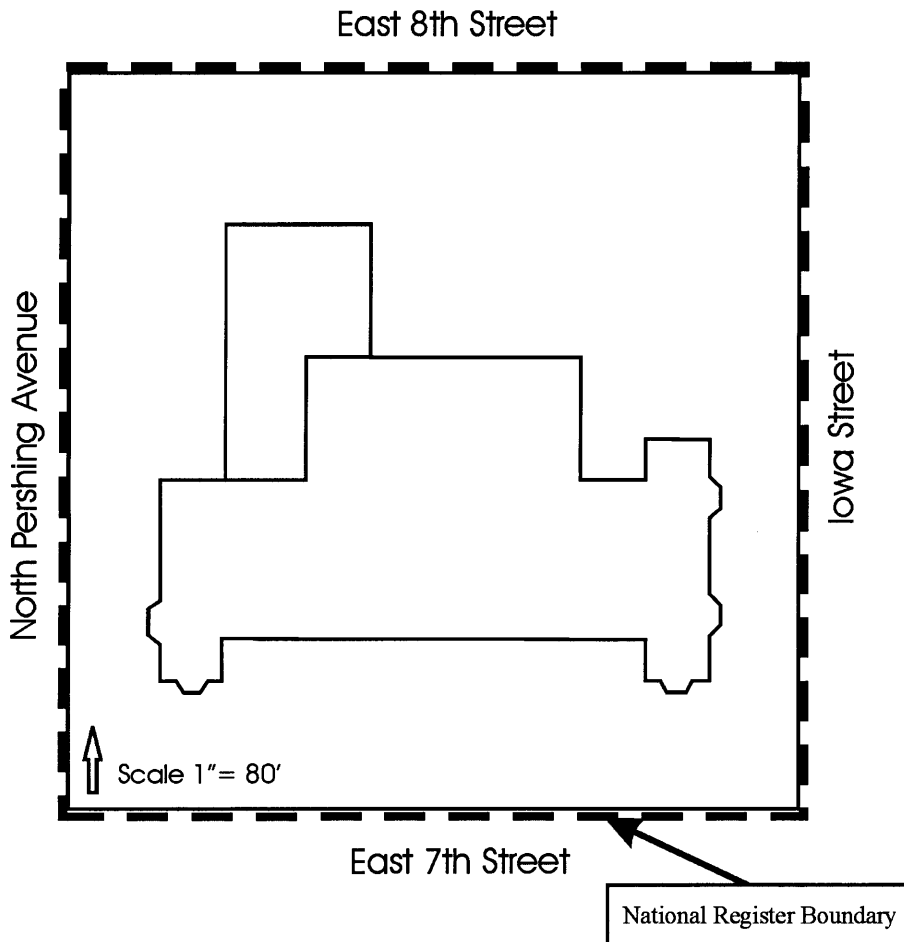
Section 10 Page 6

name of property: Lincoln School
county, state: Scott County, Iowa

GEOGRAPHICAL DATA

Verbal Boundary Description

The proposed boundary for the Lincoln Elementary School includes the main block of the school and the open space around it. The boundary consists of East Seventh Street to the south, Pershing and Iowa streets on the north and south, and East Eighth Street on the north.



Boundary Justification

The proposed boundary includes the school and its associated open space that contribute to the setting of the architecturally significant resource. This includes all the historic features of the property but does not exceed the area of significance.

United States Department of the Interior
National Park Service

**NATIONAL REGISTER OF HISTORIC PLACES
CONTINUATION SHEET**

Section Photos Page 7 name of property: Lincoln School
county, state: Scott County, Iowa

The following items apply to all photographs:

Property Name: Lincoln School

Location: Davenport, Scott County, Iowa

Photographer: Peggy Beedle

Date of Photographs: 2002

Location of Negatives: The State Historical Society of Iowa, Community Programs Bureau, 600 E. Locust, Des Moines, Iowa.

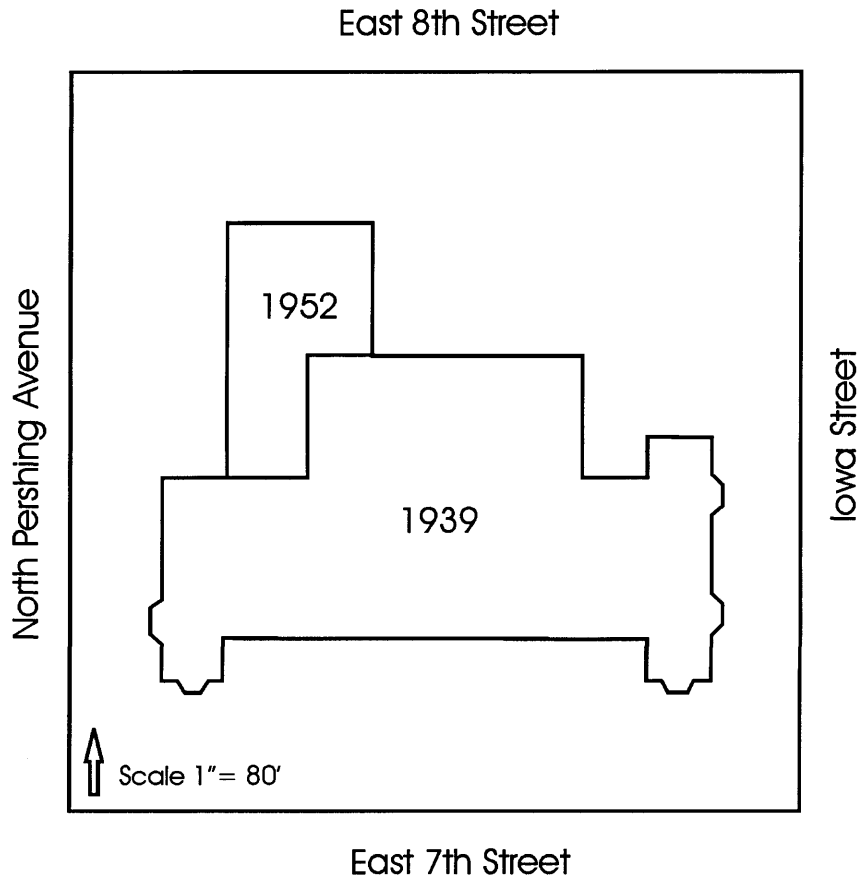
Individual Photograph Identifications:

1. South elevation and grounds, facing northeast
2. View from main entrance, facing south
3. South elevation, facing east
4. South elevation, main entrance, facing north
5. Addition, facing southeast
6. North elevation, facing southeast
7. West elevation, facing east
8. West elevation, facing southeast
9. Central hall, facing northeast
10. Music room, facing northeast
11. Classroom, facing southeast
12. Kindergarten, fish pond underneath the window, facing south
13. Auditorium, facing northwest
14. Gymnasium, facing northeast

United States Department of the Interior
National Park Service

**NATIONAL REGISTER OF HISTORIC PLACES
CONTINUATION SHEET**

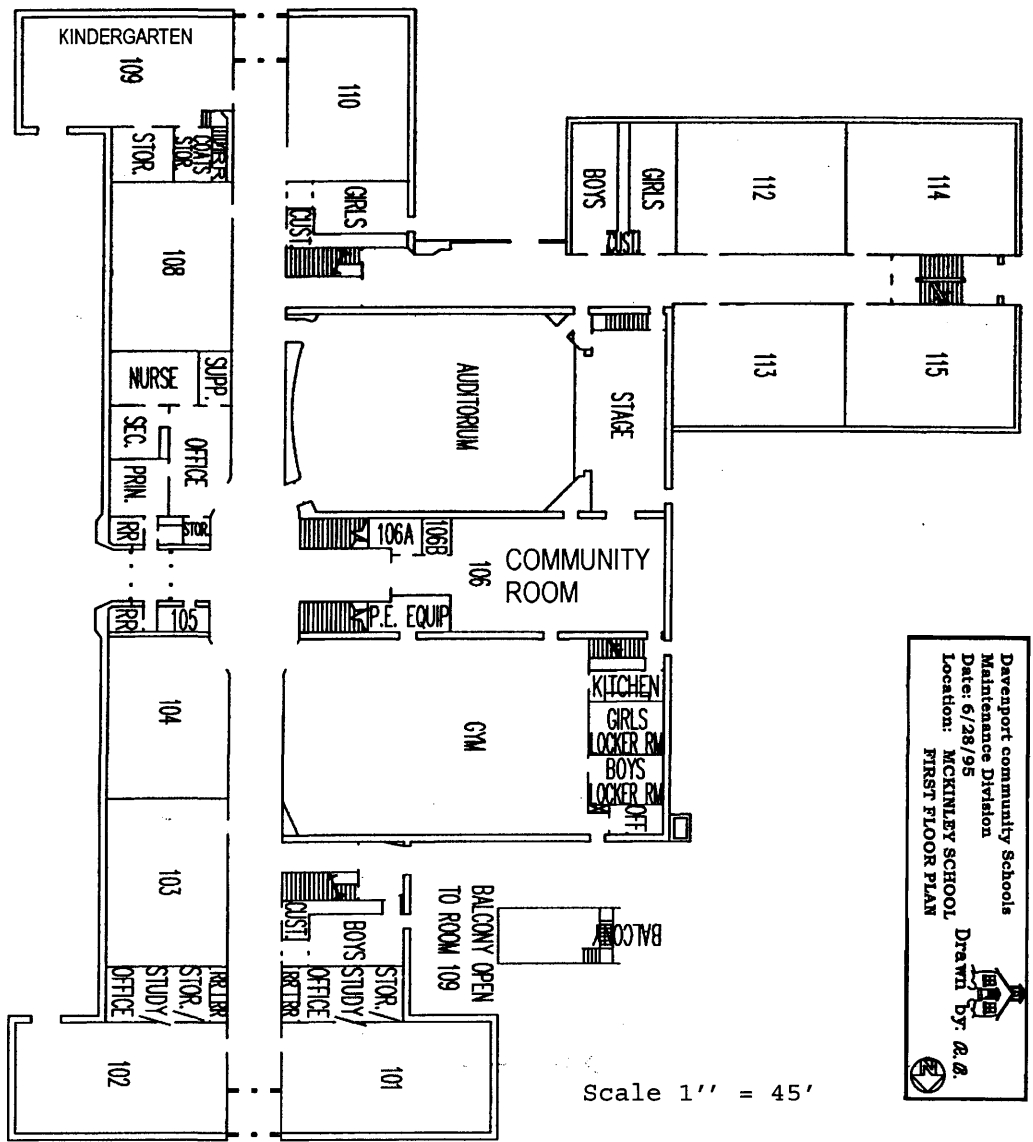
Section Floor Plans Page 8 name of property: Lincoln School
county, state: Scott County, Iowa



United States Department of the Interior
National Park Service

NATIONAL REGISTER OF HISTORIC PLACES CONTINUATION SHEET

Section Floor Plans Page 9 name of property: Lincoln School
county, state: Scott County, Iowa



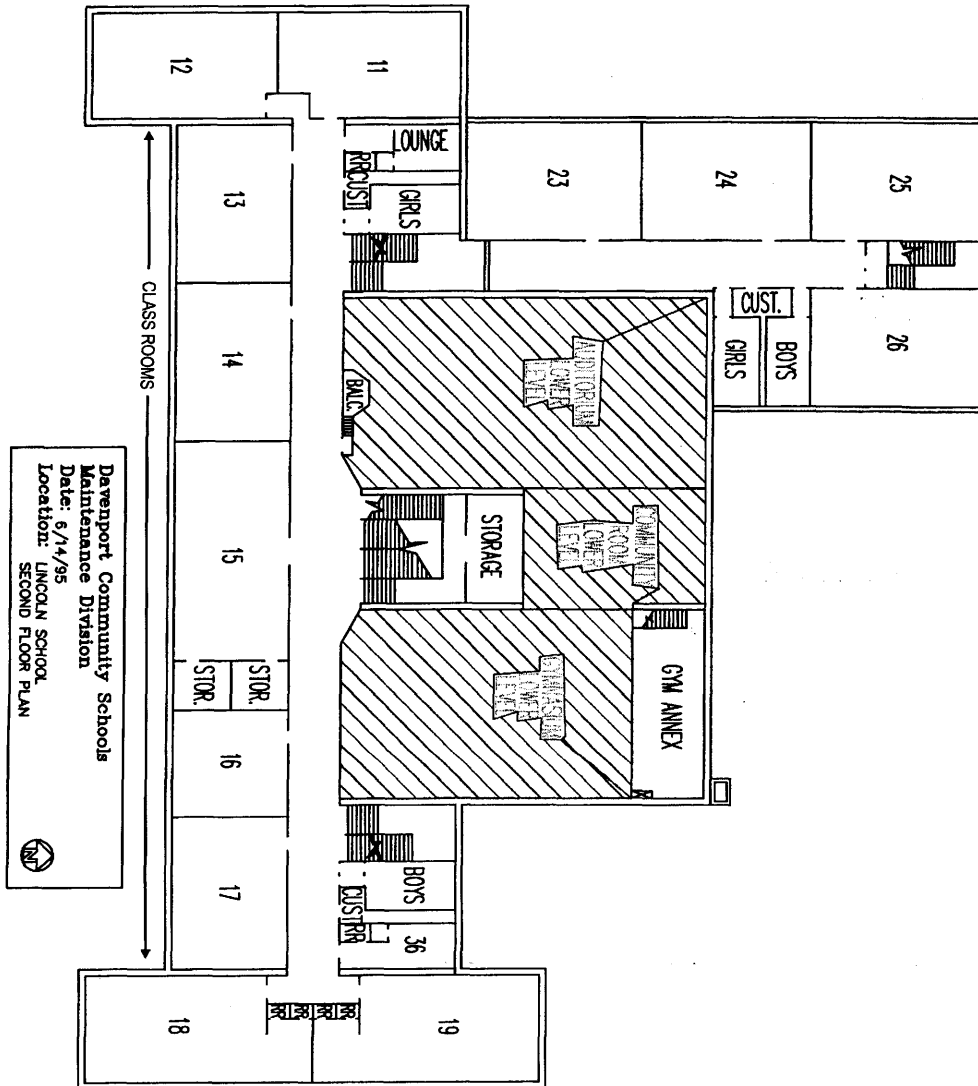
Davenport Community Schools
Maintenance Division
Date: 6/28/95
Location: MCKINLEY SCHOOL
FIRST FLOOR PLAN
Drawn by: R. G.
[Signature]

Main Office, Davenport Community School District, Davenport, Iowa.

United States Department of the Interior
National Park Service

NATIONAL REGISTER OF HISTORIC PLACES CONTINUATION SHEET

Section Floor Plans Page 10 name of property: Lincoln School
county, state: Scott County, Iowa

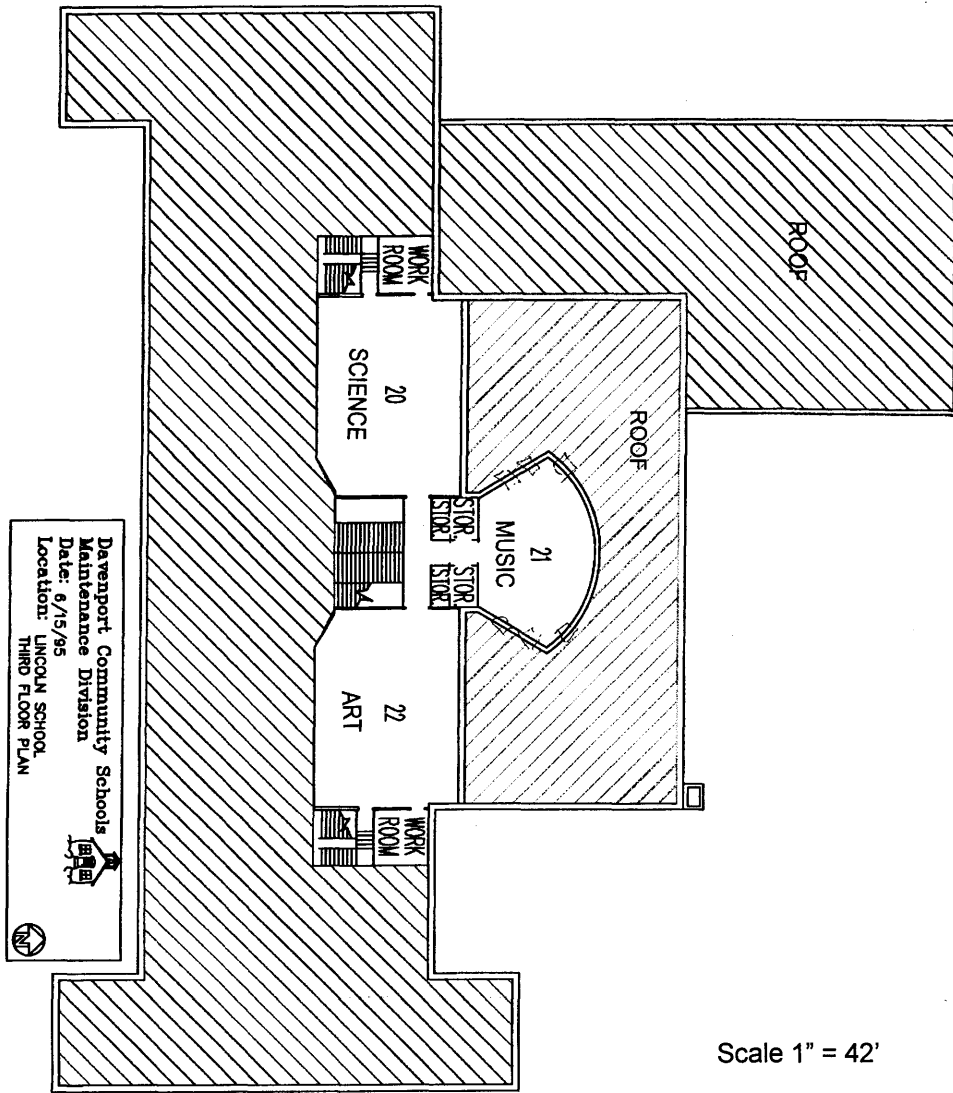


Main Office, Davenport Community School District, Davenport, Iowa.

United States Department of the Interior
National Park Service

**NATIONAL REGISTER OF HISTORIC PLACES
CONTINUATION SHEET**

Section Floor Plans Page 11 name of property: Lincoln School
county, state: Scott County, Iowa



Scale 1" = 42'

Main Office, Davenport Community School District, Davenport, Iowa.