

**NATIONAL REGISTER OF HISTORIC PLACES
PROPERTY PHOTOGRAPH FORM**

(Type all entries - attach to or enclose with photograph)

1. NAME

COMMON Old Arkansas City High School (preferred name)	AND/OR HISTORIC Arkansas City High School	NUMERIC CODE <i>(Assigned by NPS)</i> NOV 21 1974
--	--	--

2. LOCATION

STATE Kansas	COUNTY Cowley	TOWN Arkansas City
STREET AND NUMBER 300 West Central		

3. PHOTO REFERENCE

PHOTO CREDIT Unknown	DATE c. 1895	NEGATIVE FILED AT Photo Archives, Kansas State Historical Society
-------------------------	-----------------	--

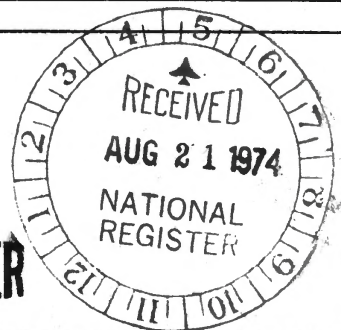
4. IDENTIFICATION

DESCRIBE VIEW, DIRECTION, ETC.

View of Old Arkansas City High School from the southeast.

#1 of 9

PROPERTY OF THE NATIONAL REGISTER





UNITED STATES DEPARTMENT OF THE INTERIOR
NATIONAL PARK SERVICE

NATIONAL REGISTER OF HISTORIC PLACES
PROPERTY PHOTOGRAPH FORM

(Type all entries - attach to or enclose with photograph)

1. NAME		
COMMON	AND/OR HISTORIC	NUMERIC CODE (Assigned by NPS)
Old Arkansas City High School (preferred name)	Arkansas City High School	NOV 21 1974

2. LOCATION		
STATE	COUNTY	TOWN
Kansas	Cowley	Arkansas City
STREET AND NUMBER		
300 West Central		

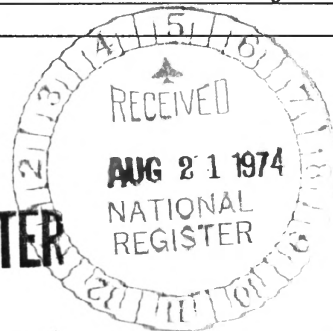
3. PHOTO REFERENCE		
PHOTO CREDIT	DATE	NEGATIVE FILED AT
Cowley County Community College	July, 1974	Historic Sites Survey, Kansas State Historical Society

4. IDENTIFICATION
DESCRIBE VIEW, DIRECTION, ETC.

View of the north side of the high school.

#2 of 9

PROPERTY OF THE NATIONAL REGISTER





UNITED STATES DEPARTMENT OF THE INTERIOR
NATIONAL PARK SERVICE

NATIONAL REGISTER OF HISTORIC PLACES
PROPERTY PHOTOGRAPH FORM

(Type all entries - attach to or enclose with photograph)

1. NAME

COMMON Old Arkansas City High School (preferred name)	AND/OR HISTORIC Arkansas City High School	NUMERIC CODE (Assigned by NPS) NOV 21 1974
--	--	---

2. LOCATION

STATE Kansas	COUNTY Cowley	TOWN Arkansas City
-----------------	------------------	-----------------------

STREET AND NUMBER

300 West Central

3. PHOTO REFERENCE

PHOTO CREDIT Cowley County Community College	DATE July, 1974	NEGATIVE FILED AT Historic Sites Survey, Kansas State Historical Society
---	--------------------	---

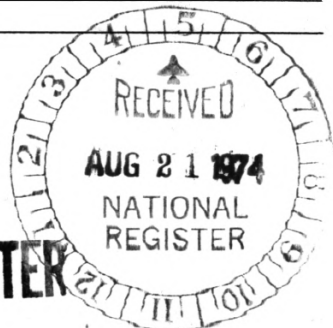
4. IDENTIFICATION

DESCRIBE VIEW, DIRECTION, ETC.

View of the west side of the high school.

3 of 9

PROPERTY OF THE NATIONAL REGISTER



HIGH SCHOOL

1890

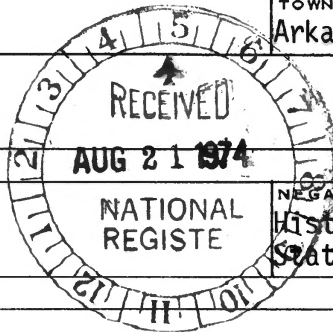


UNITED STATES DEPARTMENT OF THE INTERIOR
NATIONAL PARK SERVICE

NATIONAL REGISTER OF HISTORIC PLACES
PROPERTY PHOTOGRAPH FORM

(Type all entries - attach to or enclose with photograph)

1. NAME		
COMMON Old Arkansas City High School (preferred name)	AND/OR HISTORIC Arkansas City High School	NUMERIC CODE (Assigned by NPS) NOV 21 1974
2. LOCATION		
STATE Kansas	COUNTY Cowley	TOWN Arkansas City
STREET AND NUMBER 300 West Central		
3. PHOTO REFERENCE		
PHOTO CREDIT Cowley County Community College	DATE July, 1974	NEGATIVE FILED AT Historic Sites Survey, Kansas State Historical Society
4. IDENTIFICATION		
DESCRIBE VIEW, DIRECTION, ETC.		



View of the main entrance from the north showing the carved ornamentation around the entrance.

#4 of 9

PROPERTY OF THE NATIONAL REGISTER



UNITED STATES DEPARTMENT OF THE INTERIOR
NATIONAL PARK SERVICE

NATIONAL REGISTER OF HISTORIC PLACES
PROPERTY PHOTOGRAPH FORM

(Type all entries - attach to or enclose with photograph)

1. NAME		
COMMON Old Arkansas City High School (preferred name)	AND/OR HISTORIC Arkansas City High School	NUMERIC CODE (Assigned by NPS) NOV 21 1974
2. LOCATION		
STATE Kansas	COUNTY Cowley	TOWN Arkansas City
STREET AND NUMBER 300 West Central		
3. PHOTO REFERENCE		
PHOTO CREDIT Dumenil Photography	DATE September, 1973	NEGATIVE FILED AT 726 North Summit Arkansas City, Kansas

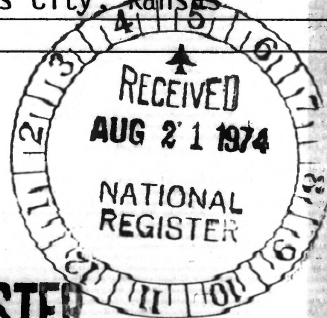
4. IDENTIFICATION

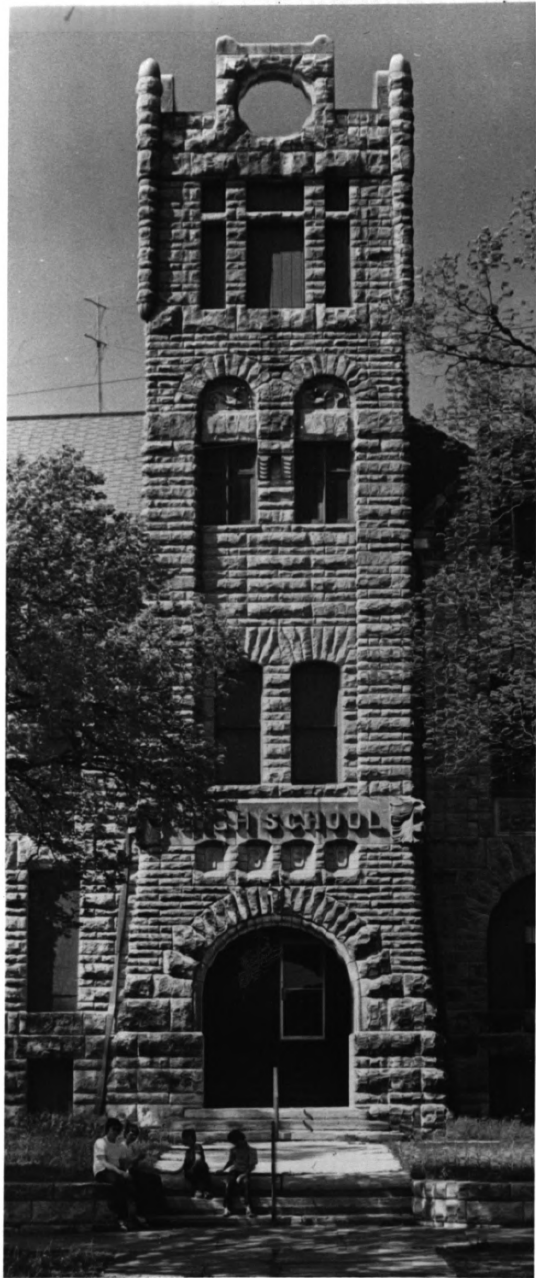
DESCRIBE VIEW, DIRECTION, ETC.

View of Old Arkansas City High School from the southeast.

5 9 9

PROPERTY OF THE NATIONAL REGISTER





UNITED STATES DEPARTMENT OF THE INTERIOR
NATIONAL PARK SERVICE

NATIONAL REGISTER OF HISTORIC PLACES
PROPERTY PHOTOGRAPH FORM

(Type all entries - attach to or enclose with photograph)

1. NAME		
COMMON Old Arkansas City High School (preferred name)	AND/OR HISTORIC Arkansas City High School	NUMERIC CODE (Assigned by NPS) NOV 21 1974
2. LOCATION		
STATE Kansas	COUNTY Cowley	TOWN Arkansas City
STREET AND NUMBER 300 West Central		
3. PHOTO REFERENCE		
PHOTO CREDIT Cowley County Community College	DATE July, 1974	NEGATIVE FILED AT Historic Sites Survey, Kansas State Historical Society

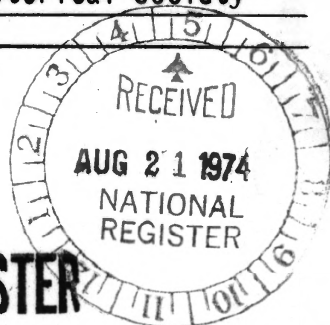
4. IDENTIFICATION

DESCRIBE VIEW, DIRECTION, ETC.

View of the tower from the north.

6 49

PROPERTY OF THE NATIONAL REGISTER



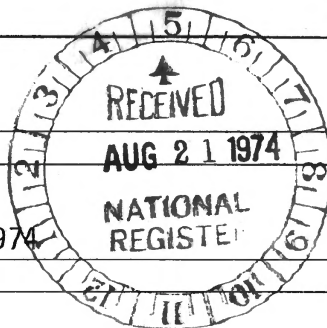


UNITED STATES DEPARTMENT OF THE INTERIOR
NATIONAL PARK SERVICE

NATIONAL REGISTER OF HISTORIC PLACES
PROPERTY PHOTOGRAPH FORM

(Type all entries - attach to or enclose with photograph)

1. NAME		
COMMON	AND/OR HISTORIC	NUMERIC CODE (Assigned by NPS)
Old Arkansas City High School (preferred name)	Arkansas City High School	NOV 21 1974
2. LOCATION		
STATE	COUNTY	TOWN
Kansas	Cowley	Arkansas City
STREET AND NUMBER		
300 West Central		
3. PHOTO REFERENCE		
PHOTO CREDIT	DATE	NEGATIVE FILED AT
Cowley County Community College	July, 1974	Historic Sites Survey, Kansas State Historical Society
4. IDENTIFICATION		
DESCRIBE VIEW, DIRECTION, ETC.		



View of the carved stone dragons located above the tower's third floor windows.

7 of 9

PROPERTY OF THE NATIONAL REGISTER

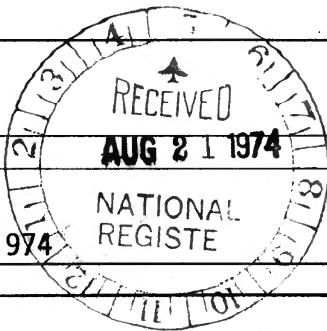


UNITED STATES DEPARTMENT OF THE INTERIOR
NATIONAL PARK SERVICE

NATIONAL REGISTER OF HISTORIC PLACES
PROPERTY PHOTOGRAPH FORM

(Type all entries - attach to or enclose with photograph)

1. NAME		
COMMON	AND/OR HISTORIC	NUMERIC CODE (Assigned by NPS)
Old Arkansas City High School (preferred name)	Arkansas City High School	NOV 21 1974
2. LOCATION		
STATE	COUNTY	TOWN
Kansas	Cowley	Arkansas City
STREET AND NUMBER		
300 West Central		
3. PHOTO REFERENCE		
PHOTO CREDIT	DATE	NEGATIVE FILED AT
Cowley County Community College	July, 1974	Historic Sites Survey, Kansas State Historical Society
4. IDENTIFICATION		
DESCRIBE VIEW, DIRECTION, ETC.		



View of carved stone leaf designs between first and second floor windows (just west of the main entrance).

8 of 9

PROPERTY OF THE NATIONAL REGISTER



UNITED STATES DEPARTMENT OF THE INTERIOR
NATIONAL PARK SERVICE

**NATIONAL REGISTER OF HISTORIC PLACES
PROPERTY PHOTOGRAPH FORM**

(Type all entries - attach to or enclose with photograph)

1. NAME

COMMON

Old Arkansas City High School (preferred name)

AND/OR HISTORIC

Arkansas City High School

NUMERIC CODE *(Assigned by NPS)*

NOV 21 1974

2. LOCATION

STATE

Kansas

COUNTY

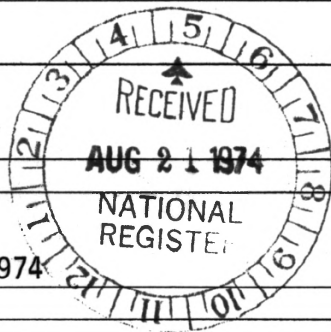
Cowley

TOWN

Arkansas City

STREET AND NUMBER

300 West Central



3. PHOTO REFERENCE

PHOTO CREDIT

Cowley County Community College

DATE

July, 1974

NEGATIVE FILED AT

Historic Sites Survey, Kansas State Historical Society

4. IDENTIFICATION

DESCRIBE VIEW, DIRECTION, ETC.

View of carved stone leaf designs between first and second floor windows (just east of the main entrance).

9

PROPERTY OF THE NATIONAL REGISTER