



UNITED STATES DEPARTMENT OF THE INTERIOR  
NATIONAL PARK SERVICE

NATIONAL REGISTER OF HISTORIC PLACES  
PROPERTY PHOTOGRAPH FORM

(Type all entries - attach to or enclose with photograph)

1. NAME		
COMMON	AND/OR HISTORIC	NUMERIC CODE (Assigned by NPS)
Bristol Waterfront Historic District		MAR 18 1975

2. LOCATION		
STATE	COUNTY	TOWN
Rhode Island	Bristol	Bristol

STREET AND NUMBER

See Continuation Sheet 1

3. PHOTO REFERENCE		
PHOTO CREDIT	DATE	NEGATIVE FILED AT
Elizabeth S. Warren	1974	Rhode Island Historical Preservation Commission, John Brown House 52 Power Street, Providence Rhode Island 02906

4. IDENTIFICATION

DESCRIBE VIEW, DIRECTION, ETC.

Doran House ( 1891 ), 99 Franklin Street, Built by Dennis Doran, a noted local carpenter for himself.

# 1 of 13

PROPERTY OF THE NATIONAL REGISTER



UNITED STATES DEPARTMENT OF THE INTERIOR  
NATIONAL PARK SERVICE

NATIONAL REGISTER OF HISTORIC PLACES  
PROPERTY PHOTOGRAPH FORM

(Type all entries - attach to or enclose with photograph)

1. NAME		
COMMON	AND/OR HISTORIC	NUMERIC CODE (Assigned by NPS)
Bristol Waterfront Historic District		MAR 18 1975

2. LOCATION		
STATE	COUNTY	TOWN
Rhode Island	Bristol	Bristol

STREET AND NUMBER		
See Continuation Sheet 1		

3. PHOTO REFERENCE		
PHOTO CREDIT	DATE	NEGATIVE FILED AT
Elizabeth S. Warren	1974	Rhode Island Historical Preservation Commission, John Brown House 52 Power Street, Providence Rhode Island, 02906

4. IDENTIFICATION
DESCRIBE VIEW, DIRECTION, ETC.

Herreshoff Manufacturing Co. - Machine and Pattern Shop ( c. 1873), 20-30 Burnside Street.

#2 of 12

PROPERTY OF THE NATIONAL REGISTER



UNITED STATES DEPARTMENT OF THE INTERIOR  
NATIONAL PARK SERVICE

NATIONAL REGISTER OF HISTORIC PLACES  
PROPERTY PHOTOGRAPH FORM

(Type all entries - attach to or enclose with photograph)

<b>1. NAME</b>		
COMMON	AND/OR HISTORIC	NUMERIC CODE (Assigned by NPS)
Bristol Waterfront Historic District		MAR 18 1975
<b>2. LOCATION</b>		
STATE	COUNTY	TOWN
Rhode Island	Bristol	Bristol
STREET AND NUMBER		
See Continuation Sheet 1		
<b>3. PHOTO REFERENCE</b>		
PHOTO CREDIT	DATE	NEGATIVE FILED AT
Elizabeth S. Warren	1974	Rhode Island Historical Preservation Commission, John Brown House 42 Power Street, Providence Rhode Island, 02906
<b>4. IDENTIFICATION</b>		
DESCRIBE VIEW, DIRECTION, ETC.		

Codman House (1870), 42 High Street, Built for Catherine Codman and now home of the late Senator Edward L. Leahy's family.

#3 of 12

**PROPERTY OF THE NATIONAL REGISTER**



UNITED STATES DEPARTMENT OF THE INTERIOR  
NATIONAL PARK SERVICE

NATIONAL REGISTER OF HISTORIC PLACES  
PROPERTY PHOTOGRAPH FORM

(Type all entries - attach to or enclose with photograph)

1. NAME

COMMON

Bristol Waterfront Historic District

AND/OR HISTORIC

NUMERIC CODE (Assigned by NPS)

MAR 18 1975

2. LOCATION

STATE

Rhode Island

COUNTY

Bristol

TOWN

Bristol

STREET AND NUMBER

See Continuation Sheet 1

NOV 6 1974

3. PHOTO REFERENCE

PHOTO CREDIT

Ancelin V. Lynch

DATE

1974

NEGATIVE FILED AT Rhode Island

Historical Preservation  
Commission

4. IDENTIFICATION

DESCRIBE VIEW, DIRECTION, ETC.

Mrs. E. H. Pearce House (c. 1865), 274 Wood Street  
Built as a mirror image to Capt. L. W. Horton House (c. 1865) at 275 Wood Street

#4 of 13

PROPERTY OF THE NATIONAL REGISTER





UNITED STATES DEPARTMENT OF THE INTERIOR  
NATIONAL PARK SERVICE  
**NATIONAL REGISTER OF HISTORIC PLACES**  
**PROPERTY PHOTOGRAPH FORM**

*(Type all entries - attach to or enclose with photograph)*

**1. NAME**

COMMON

Bristol Waterfront  
Historic District

AND/OR HISTORIC

NUMERIC CODE *(Assigned by NPS)*

02148 1 8 1974

**2. LOCATION**

STATE

Rhode Island

COUNTY

Bristol

TOWN

Bristol

STREET AND NUMBER

See Continuation Sheet 1

**3. PHOTO REFERENCE**

PHOTO CREDIT

Elizabeth S. Warren

DATE

1974

NEGATIVE FILED AT Rhode Island  
Historical Preservation  
Commission, John Brown House  
52 Power Street, Providence  
Rhode Island, 02906

**4. IDENTIFICATION**

DESCRIBE VIEW, DIRECTION, ETC.

Capt. Josiah Talbot House (1838), 647 Hope Street, designed by architect Russell Warren .

#5 of 13

**PROPERTY OF THE NATIONAL REGISTER**



UNITED STATES DEPARTMENT OF THE INTERIOR  
NATIONAL PARK SERVICE  
**NATIONAL REGISTER OF HISTORIC PLACES**  
**PROPERTY PHOTOGRAPH FORM**

*(Type all entries - attach to or enclose with photograph)*

<b>1. NAME</b>		<b>NUMERIC CODE</b> <i>(Assigned by NPS)</i>
<b>COMMON</b> Bristol Waterfront Historic District	<b>AND/OR HISTORIC</b>	MAR 18 1975

<b>2. LOCATION</b>		
<b>STATE</b> Rhode Island	<b>COUNTY</b> Bristol	<b>TOWN</b> Bristol

**STREET AND NUMBER**  
See Continuation Sheet 1

<b>3. PHOTO REFERENCE</b>		
<b>PHOTO CREDIT</b> Elizabeth S. Warren	<b>DATE</b> 1974	<b>NEGATIVE FILED AT</b> Rhode Island Historical Preservation Commission, John Brown House 52 Power Street, Providence Rhode Island, 02906

**4. IDENTIFICATION**  
DESCRIBE VIEW, DIRECTION, ETC.

Dimond-Gardner House ( 1838 ), 617 Hope Street, designed by architect Russell Warren for Governor Francis Dimond.

# 6 of 12

**PROPERTY OF THE NATIONAL REGISTER**



UNITED STATES DEPARTMENT OF THE INTERIOR  
NATIONAL PARK SERVICE  
**NATIONAL REGISTER OF HISTORIC PLACES**  
**PROPERTY PHOTOGRAPH FORM**

(Type all entries - attach to or enclose with photograph)

1. NAME

COMMON <b>Bristol Waterfront Historic District</b>	AND/OR HISTORIC	NUMERIC CODE (Assigned by NPS) <b>MAR 18 1975</b>
---	-----------------	--

2. LOCATION

STATE <b>Rhode Island</b>	COUNTY <b>Bristol</b>	TOWN <b>Bristol</b>
------------------------------	--------------------------	------------------------

STREET AND NUMBER

See Continuation Sheet 1

3. PHOTO REFERENCE

PHOTO CREDIT <b>Elizabeth S. Warren</b>	DATE <b>1974</b>	NEGATIVE FILED AT <b>Rhode Island Historical Preservation Commission, John Brown House 92 Power Street, Providence Rhode Island, 02906</b>
--	---------------------	--

4. IDENTIFICATION

DESCRIBE VIEW, DIRECTION, ETC.

Linden Place ( 1810 ), 500 Hope Street, designed by architect Russell Warren for General George DeWolf.

# 7 of 13

**PROPERTY OF THE NATIONAL REGISTER**



UNITED STATES DEPARTMENT OF THE INTERIOR  
NATIONAL PARK SERVICE

NATIONAL REGISTER OF HISTORIC PLACES  
PROPERTY PHOTOGRAPH FORM

(Type all entries - attach to or enclose with photograph)

1. NAME

COMMON	<b>Bristol Waterfront Historic District</b>	AND/OR HISTORIC	NUMERIC CODE (Assigned by NPS)
			<b>WAR 1 8 1975</b>

2. LOCATION

STATE	<b>Rhode Island</b>	COUNTY	<b>Bristol</b>	TOWN	<b>Bristol</b>
STREET AND NUMBER					
<b>See Continuation Sheet 1</b>					

3. PHOTO REFERENCE

PHOTO CREDIT	DATE	NEGATIVE FILED AT
<b>Elizabeth S. Warren</b>	<b>1974</b>	<b>Rhode Island Historical Preservation Commission, John Brown House Copper Street, Providence Rhode Island, 02906</b>

4. IDENTIFICATION

DESCRIBE VIEW, DIRECTION, ETC.

John Howe House or "House With the Eagles" (1807 - 1808), 341 Hope Street,  
Noted for Chippendale balustrade with hand-carved eagles made aboard the  
"Yankee" and cornice from Asher Benjamin.

# 8 of 13

PROPERTY OF THE NATIONAL REGISTER





UNITED STATES DEPARTMENT OF THE INTERIOR  
NATIONAL PARK SERVICE

NATIONAL REGISTER OF HISTORIC PLACES  
PROPERTY PHOTOGRAPH FORM

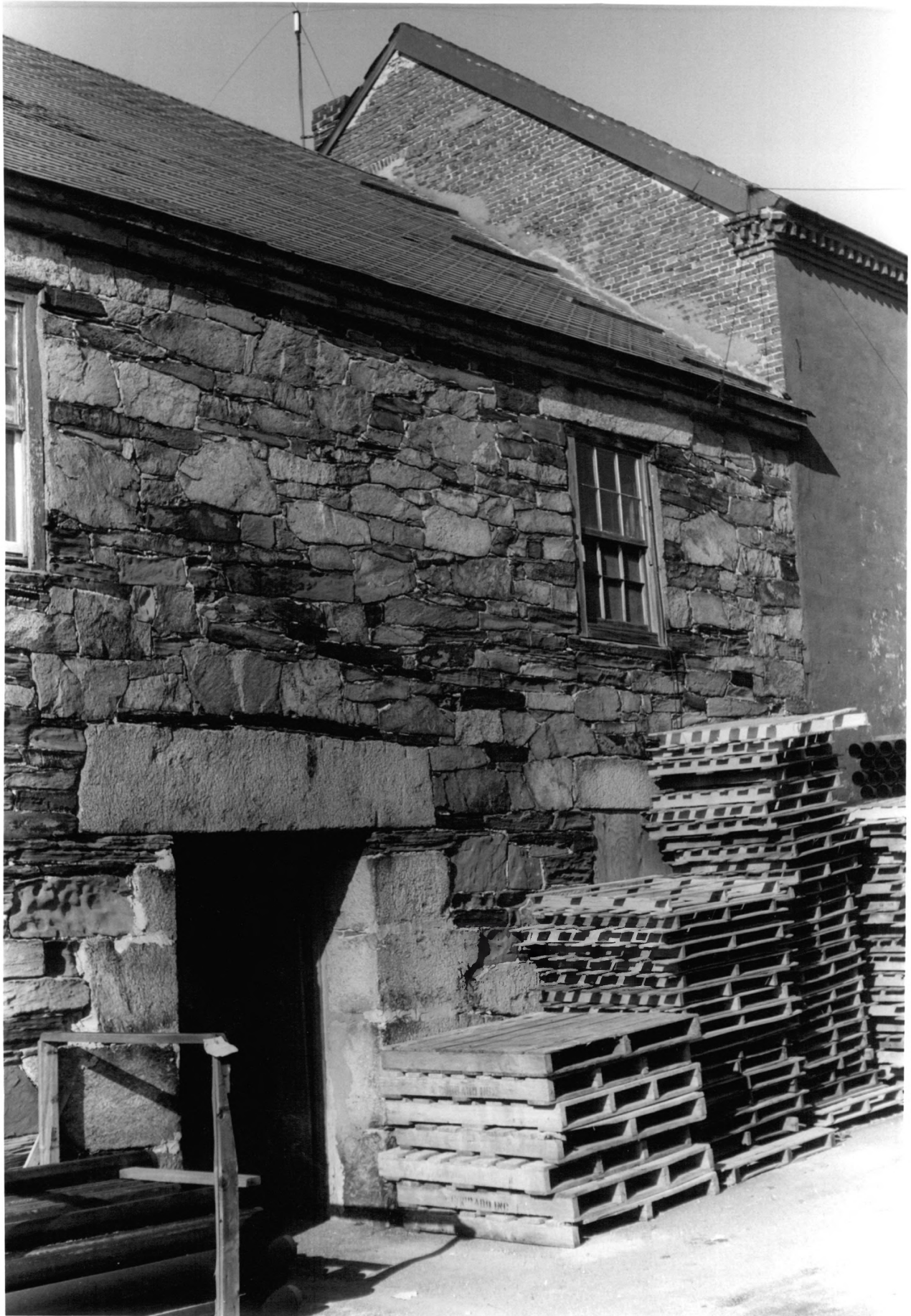
(Type all entries - attach to or enclose with photograph)

<b>1. NAME</b>		
COMMON Bristol Waterfront Historic District	AND/OR HISTORIC	NUMERIC CODE (Assigned by NPS) MAR 18 1975
<b>2. LOCATION</b>		
STATE Rhode Island	COUNTY Bristol	TOWN Bristol
STREET AND NUMBER See Continuation Sheet 1		
<b>3. PHOTO REFERENCE</b>		
PHOTO CREDIT Elizabeth S. Warren	DATE 1974	NEGATIVE FILED AT Rhode Island Historical Preservation Commission, John Brown House 52 Power Street, Providence Rhode Island, 02906
<b>4. IDENTIFICATION</b>		
DESCRIBE VIEW, DIRECTION, ETC.		

Hope Street, view north along its west side showing John Russell or Holmes House (1810), 399 Hope Street, Godding House (1807), 407-409 Hope Street, Usher House (1804), 417 Hope Street and the Herreshoff House (1901), 423 Hope Street.

# 9 of 13

PROPERTY OF THE NATIONAL REGISTER



UNITED STATES DEPARTMENT OF THE INTERIOR  
NATIONAL PARK SERVICE  
**NATIONAL REGISTER OF HISTORIC PLACES**  
**PROPERTY PHOTOGRAPH FORM**

*(Type all entries - attach to or enclose with photograph)*

1. NAME COMMON <b>Bristol Waterfront Historic District</b>		AND/OR HISTORIC	NUMERIC CODE <i>(Assigned by NPS)</i>  <b>MAR 18 1975</b>
2. LOCATION STATE <b>Rhode Island</b>		COUNTY <b>Bristol</b>	TOWN <b>Bristol</b>
STREET AND NUMBER <b>See Continuation Sheet 1</b>			
3. PHOTO REFERENCE PHOTO CREDIT <b>Elizabeth S. Warren</b>		DATE <b>1974</b>	NEGATIVE FILED AT <b>Rhode Island Historical Preservation Commission, John Brown House 32 Power Street, Providence Rhode Island, 02906</b>
4. IDENTIFICATION DESCRIBE VIEW, DIRECTION, ETC.			

DeWolf Warehouse (1818), Built by James DeWolf from African stone carried as ballast in Bristol slavers; joined to Byron Diman's Counting House ( c.1840); now J. T. Oconnell's Warehouse at 267 Thames Street.

#10 of 12

**PROPERTY OF THE NATIONAL REGISTER**



TOWN

TOWNE  
COFFEE SHOPPE  
Coca-Cola

DR. R.C. DYER  
DENTIST

W. HENRY  
COLEMAN  
REALTORS  
Dial 253-8381

59

FOOD - SPIRITS

UNITED STATES DEPARTMENT OF THE INTERIOR  
NATIONAL PARK SERVICE

NATIONAL REGISTER OF HISTORIC PLACES  
PROPERTY PHOTOGRAPH FORM

(Type all entries - attach to or enclose with photograph)

<b>1. NAME</b>		
COMMON Bristol Waterfront Historic District	AND/OR HISTORIC	NUMERIC CODE (Assigned by NPS)  MAR 18 1975
<b>2. LOCATION</b>		
STATE Rhode Island	COUNTY Bristol	TOWN Bristol
STREET AND NUMBER See Continuation Sheet 1		
<b>3. PHOTO REFERENCE</b>		
PHOTO CREDIT Elizabeth S. Warren	DATE 1974	NEGATIVE FILED AT Rhode Island Historical Preservation Commission, John Brown House 52 Power Street, Providence Rhode Island, 02906
<b>4. IDENTIFICATION</b>		
DESCRIBE VIEW, DIRECTION, ETC.		

State Street, view west along its north side showing Old Customs House (1815), 39 State Street, row of eighteenth and early nineteenth century shops and the Holmes Block (c. 1885 ) at 1 State Street.

# 11 of 13

PROPERTY OF THE NATIONAL REGISTER



UNITED STATES DEPARTMENT OF THE INTERIOR  
NATIONAL PARK SERVICE

NATIONAL REGISTER OF HISTORIC PLACES  
PROPERTY PHOTOGRAPH FORM

(Type all entries - attach to or enclose with photograph)

1. NAME		
COMMON Bristol Waterfront Historic District	AND/OR HISTORIC	NUMERIC CODE (Assigned by NPS)  MAR 18 1975

2. LOCATION		
STATE Rhode Island	COUNTY Bristol	TOWN Bristol

STREET AND NUMBER  
See Continuation Sheet 1

3. PHOTO REFERENCE		
PHOTO CREDIT Elizabeth S. Warren	DATE 1974	NEGATIVE FILED AT Rhode Island Historical Preservation Commission, John Brown House, 52 Power Street, Providence Rhode Island, 02906

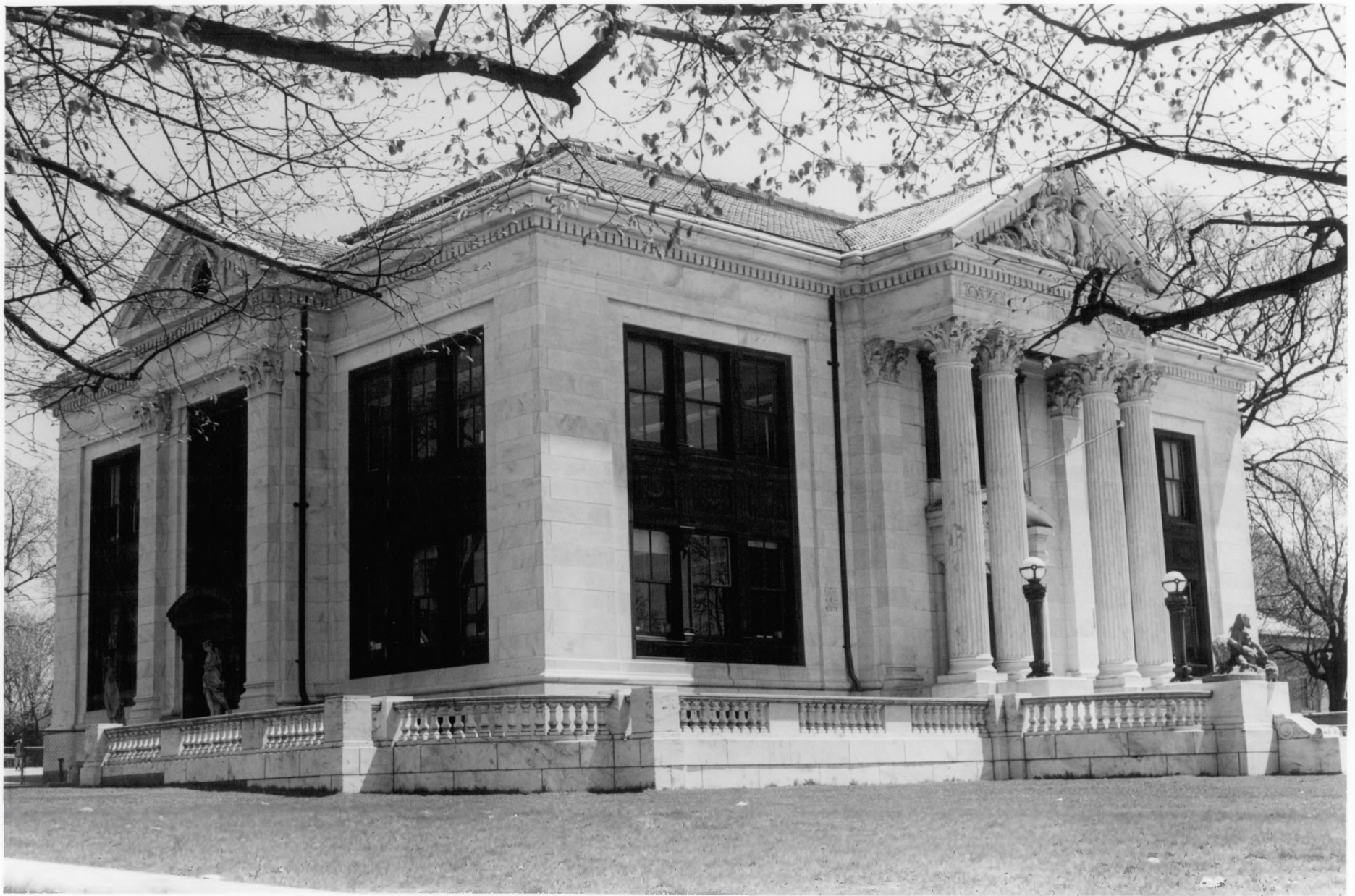
4. IDENTIFICATION  
DESCRIBE VIEW, DIRECTION, ETC.

View north along west side of Hope Street showing Henry Peck House (1784), 649 Hope Street and Nye-Perry House (c. 1770), 675 Hope Street.

# 12 413

PROPERTY OF THE NATIONAL REGISTER





UNITED STATES DEPARTMENT OF THE INTERIOR  
NATIONAL PARK SERVICE

NATIONAL REGISTER OF HISTORIC PLACES  
PROPERTY PHOTOGRAPH FORM

(Type all entries - attach to or enclose with photograph)

1. NAME		
COMMON Bristol Waterfront Historic District	AND/OR HISTORIC	NUMERIC CODE (Assigned by NPS) MAR 18 1975
2. LOCATION		
STATE Rhode Island	COUNTY Bristol	TOWN Bristol
STREET AND NUMBER See Continuation Sheet 1		
3. PHOTO REFERENCE		
PHOTO CREDIT Elizabeth S. Warren	DATE 1974	NEGATIVE FILED AT Rhode Island Historical Preservation Commission, John Brown House 52 Power Street, Providence Rhode Island, 02906
4. IDENTIFICATION		
DESCRIBE VIEW, DIRECTION, ETC.		

Colt Memorial School ( 1906 ), 550 Hope Street, designed by Cooper and Bailey,  
Boston, Massachusetts; given to the Town of Bristol by Samuel Pomeroy Colt.

# 13  
PROPERTY OF THE NATIONAL REGISTER