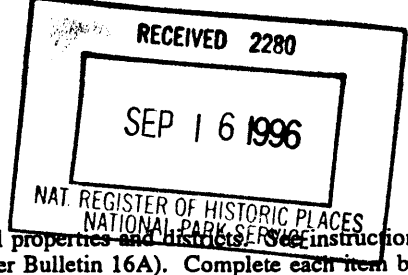


United States Department of the Interior
National Park Service

National Register of Historic Places
Registration Form



This form is for use in nominating or requesting determinations for individual properties and historic districts. See instructions in *How to Complete the National Register of Historic Places Registration Form* (National Register Bulletin 16A). Complete each item by marking "x" on the appropriate line or by entering the information requested. If an item does not apply to the property being documented, enter "N/A" for "not applicable." For functions, architectural classification, materials, and areas of significance, enter only categories and subcategories from the instructions. Place additional entries and narrative items on continuation sheets (NPS Form 10-900a). Use a typewriter, word processor, or computer, to complete all items.

1. Name of Property

historic name WILLIAM A. AND ETTA BAUM COTTAGE

other names/site number _____

2. Location

street & number 1604 8th Street N/A not for publication

city or town Des Moines N/A vicinity

state Iowa code IA county Polk code 153 zip code 50314

3. State/Federal Agency Certification

As the designated authority under the National Historic Preservation Act, as amended, I hereby certify that this (nomination request for determination of eligibility) meets the documentation standards for registering properties in the National Register of Historic Places and meets the procedural and professional requirements set forth in 36 CFR Part 60. In my opinion, the property (meets does not meet) the National Register criteria. I recommend that this property be considered significant (nationally statewide locally). (See continuation sheet for additional comments.)

Pattina Christy DSHPO 9-12-96
Signature of certifying official/Title Date
State Historical Society of Iowa
State or Federal agency and bureau

In my opinion, the property (meets does not meet) the National Register criteria. (See continuation sheet for additional comments.)

Signature of certifying official/Title Date

State or Federal agency and bureau

4. National Park Service Certification

I hereby certify that the property is :

- entered in the National Register.
 See continuation sheet.
- determined eligible for the National Register
 See continuation sheet
- determined not eligible for the National Register
- removed from the National Register.
- Other, (Explain)

for
Signature of Keeper Date of Action
Edson H. Ball 10-25-98

William A. and Etta Baum Cottage
Name of Property

Polk County, Iowa
County and State

5. Classification

Ownership of Property
(Check as many lines as apply)

- private
- public-local
- public-State
- public-Federal

Category of Property
(Check only one line)

- building(s)
- district
- site
- structure
- object

Number of Resources within Property
(Do not include previously listed resources in the count.)

Contributing	Noncontributing	
<u>1</u>	<u>0</u>	buildings
		sites
		structures
		objects
<u>1</u>	<u>0</u>	Total

Name of related multiple property listing
(Enter "N/A" if property is not part of a multiple property listing)

Towards a Greater Des Moines

Number of contributing resources previously listed in the National Register

0

6. Function or Use

Historic Functions
(Enter categories from instructions)

DOMESTIC/single dwelling

Current Functions
(Enter categories from instructions)

DOMESTIC/single dwelling

7. Description

Architectural Classification
(Enter categories from instructions)

LATE VICTORIAN/Queen Anne

Materials
(Enter categories from instructions)

foundation Brick
walls Wood
roof Asphalt
other Glass

Narrative Description

(Describe the historic and current condition of the property on one or more continuation sheets.)

William A. and Etta Baum Cottage
Name of Property

Polk County, Iowa
County and State

8. Statement of Significance

Applicable National Register Criteria
(Mark "x" on one or more lines for the criteria qualifying the property for National Register listing)

- A** Property is associated with events that have made a significant contribution to the broad patterns of our history.
- B** Property is associated with the lives of persons significant in our past.
- C** Property embodies the distinctive characteristics of a type, period, or method of construction or represents the work of a master, or possesses high artistic values, or represents a significant and distinguishable entity whose components lack individual distinction.
- D** Property has yielded, or is likely to yield, information important in prehistory or history.

Areas of Significance
(Enter categories from instructions)

ARCHITECTURE

Period of Significance

1891

Significant Dates

1891

Significant Person

(Complete if Criterion B is marked above)

N/A

Cultural Affiliation

Architect/Builder

Unknown

Narrative Statement of Significance - (Explain the significance of the property on one or more continuation sheets)

9. Major Bibliography References

Bibliography

(Cite the books, articles and other sources used in preparing this form on one or more continuation sheets.)

Previous documentation on file (NPS):

- previous determination of individual listing (36 CFR 67) has been requested
- previously listed in the National Register
- previously determined eligible by the National Record
- designated a National Historic Landmark
- recorded by American Buildings Survey # _____
- recorded by Historic American Engineering Record # _____

Primary location of additional data:

- State Historical Preservation Office
- Other State agency
- Federal agency
- Local government
- University
- Other

Name of repository

William A. and Etta Baum Cottage
Name of Property

Polk County, Iowa
County and State

10. Geographical Data

Acreage of Property Less than one acre

UTM References

(Place additional UTM references on a continuation sheet.)

1 | 15 | 4 47 688 | 46 06 240 |

Zone Easting Northing

2 | | | |

Zone Easting Northing

3 | | | |

Zone Easting Northing

4 | | | |

Verbal Boundary Description

(Describe the boundaries of the property on a continuation sheet)

Boundary Justification

(Explain why the boundaries were selected on a continuation sheet)

11. Form Prepared By

name/title William C. Page, Public Historian

organization River Bend Neighborhood Association date June 30, 1995

street & number 520 East Sheridan Avenue telephone 515-243-5740; FAX 515-243-7285

city or town Des Moines state Iowa zip code 50313

Additional Documentation

Submit the following items with the completed form:

Continuation Sheets

Maps

A USGS map (7.5 or 15 minute series) indicating the property's location.

A Sketch map for historic districts and properties having large acreage or numerous resources.

Photographs - Representative black and white photographs of the property.

Additional items - (Check with the SHPO or FPO for any additional items)

Property Owner

(Complete this item at the request of SHPO or FPO.)

name Marlene Doby

street & number Post Office Box 4782 telephone 515-243-1297 (O); 515-244-4602 (H)

city or town Des Moines state Iowa zip code 50306

Paperwork Reduction Act Statement: This information is being collected for applications to the National Register of Historic Places to nominate properties for listing or determine eligibility for listing, to list properties, and to amend existing listings. Response to this request is required to obtain a benefit in accordance with the National Historic Preservation Act, as amended (16 U.S.C. 470 et seq.).

Estimated Burden Statement: Public reporting burden for this form is estimated to average 18.1 hours per response including time for reviewing instructions, gathering and maintaining data, and completing and reviewing the form. Direct comments regarding this burden estimate or any aspect of this form to the Chief, Administrative Services Division, National Park Service, P.O. Box 37127, Washington, DC 20013-7127; and the Office of Management and Budget, Paperwork Reductions Projects (1024-0018), Washington, DC 20503.

United States Department of the Interior
National Park Service

**NATIONAL REGISTER OF HISTORIC PLACES
CONTINUATION SHEET**

Section number 7 Page 1

CFN-259-1116

William A. and Etta Baum Cottage, Polk County, Iowa.

GENERAL DESCRIPTION

This is a 1-1/2 story, frame single-family dwelling. Built in 1891, this building features a gable-end facade, brick foundation, and front porch covered by a gable-end roof and supported by wood columns. The roof on this cottage is complex for its small size and features a gable-on-hip configuration among other roofs.

The integrity of this building is good, with few discernible alterations from its time of significance.

COTTAGE

The main portion of the cottage measures 28' x 32' (width by depth), with half-width porch on the facade, which measures 14' x 4'.

The building rests on a brick foundation. Of balloon frame construction, the building is clad with clapboard siding. The roof is covered with asphalt shingles. The facade features canted corners on the south and north. A porch is situated on the facade. Three wooden posts support a half-story above this porch, which is covered by a facade gable roof intersecting with the main hip roof of the house and projecting beyond the facade line of the building (see Continuation Sheet 7-4).

On the interior, the cottage features five rooms on the first floor and two rooms on the half story. Hardwood flooring covers the first floor, while those on the second floor are softwood. Wall finishes on both floors are plaster. The first floor contains 932 square feet. A part basement is situated under the cottage. It contains 216 square feet. The basement floor is poured concrete, and the walls are unfinished.

SITE

This cottage is situated on Lot 7 in Block 13 of Polk County Homestead & Trust Company's Addition to the City of Des Moines, Iowa. This parcel measures 50' x 128' (width by depth). This is the second city lot north of the intersection of College Avenue and 8th Street on the west side of 8th Street. The cottage faces east. The cottage itself is the only improvement on this lot. Although a stable and an outbuilding once stood on the site (Sanborn 1901), these resources were already nonextant in 1920 (Sanborn 1920).

Although the front yard of Baum Cottage slopes slightly to 8th Street, the immediate site of this property is generally level in topography.

The nearby intersection of College Avenue and 8th Street is of some importance in North Des Moines. Although College Avenue serves as a traffic collector rather than a traffic artery, two significant institutions stand at its intersection with 8th Street. The former North Des Moines High School (now Moulton Elementary School) stands on the southeast corner, and Trinity United Methodist Church is

United States Department of the Interior
National Park Service

NATIONAL REGISTER OF HISTORIC PLACES CONTINUATION SHEET

Section number 7 Page 2

CFN-259-1116

William A. and Etta Baum Cottage, Polk County, Iowa.

located on the southwest corner. The imposing size of these institutions contributes a sense of place to this intersection (see Continuation Sheet 7-3).

The area in general is densely built. The two institutions mentioned above contribute partially to this feeling, as well as the fact that the relatively small size of city lots in this area have encouraged construction of cottages and houses close to one another. A brick double house stands across the street from the Baum Cottage at 1603-1605 8th Street. Most of the city lots in the area feature buildings of contemporary age.

A major city route, 6th Avenue, is situated two blocks east of 8th Street and serves as an artery into Des Moines' central business district from the north. It carries heavy traffic flow, and a commercial node stands at its intersection with College Avenue. Land use immediately surrounding the Baum Cottage remains generally residential.

United States Department of the Interior
National Park Service

NATIONAL REGISTER OF HISTORIC PLACES CONTINUATION SHEET

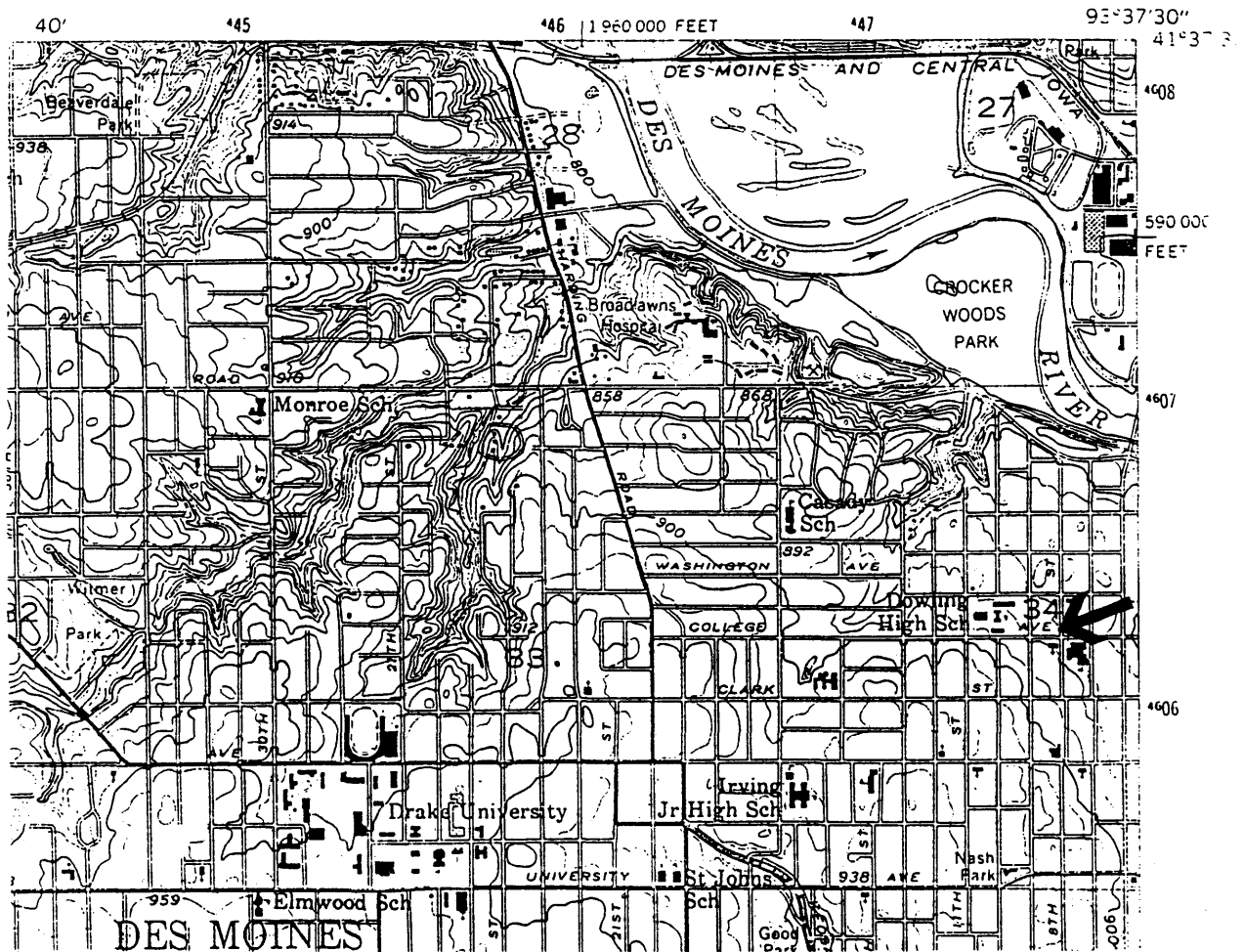
Section number 7 Page 3

CFN-259-1116

William A. and Etta Baum Cottage, Polk County, Iowa.

SITE MAP

ARROW LOCATES PROPERTY



United States Department of the Interior
National Park Service

NATIONAL REGISTER OF HISTORIC PLACES CONTINUATION SHEET

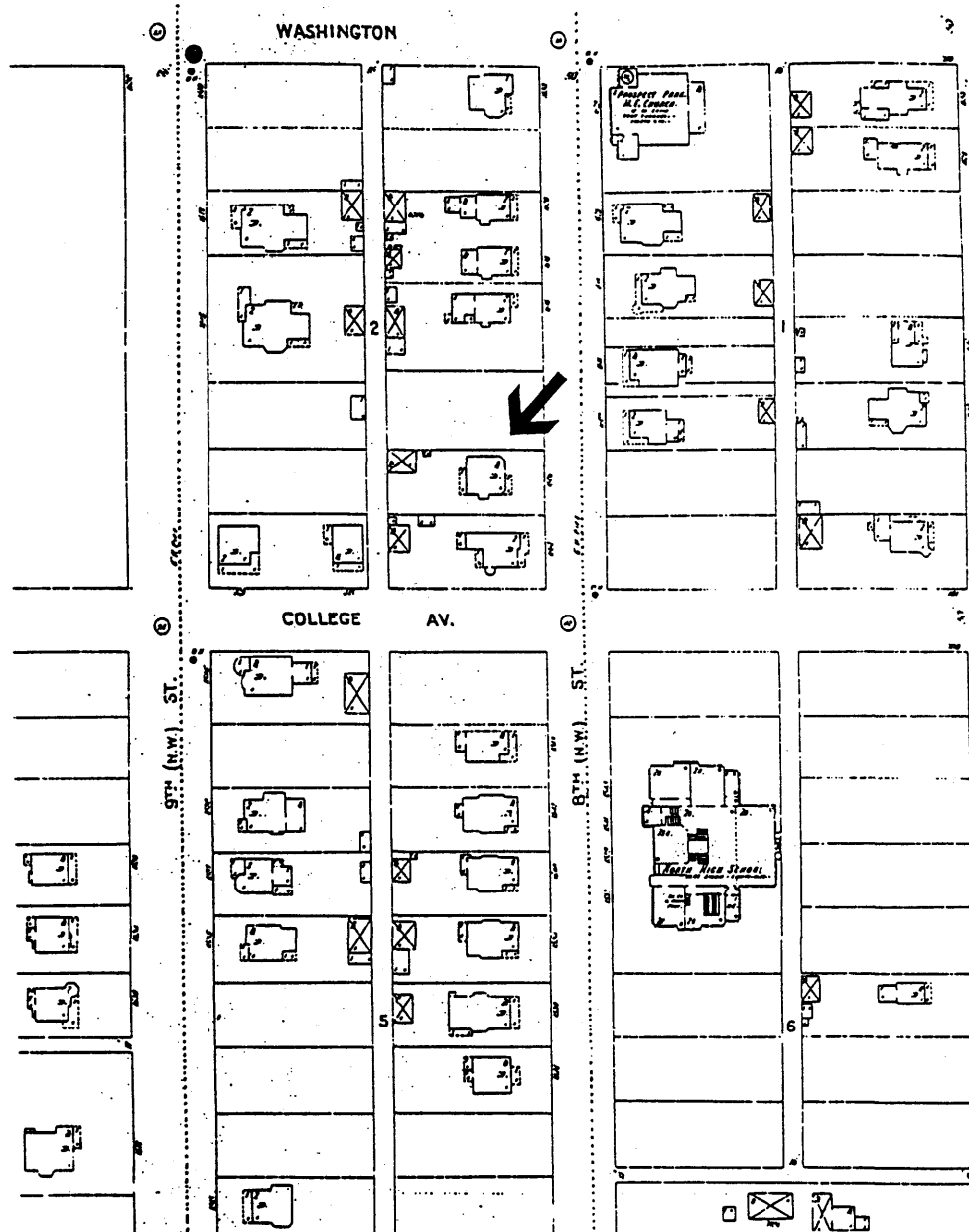
Section number 7 Page 4

CFN-259-1116

William A. and Etta Baum Cottage, Polk County, Iowa.

1901 PLAT MAP

ARROW LOCATES PROPERTY



United States Department of the Interior
National Park Service

NATIONAL REGISTER OF HISTORIC PLACES CONTINUATION SHEET

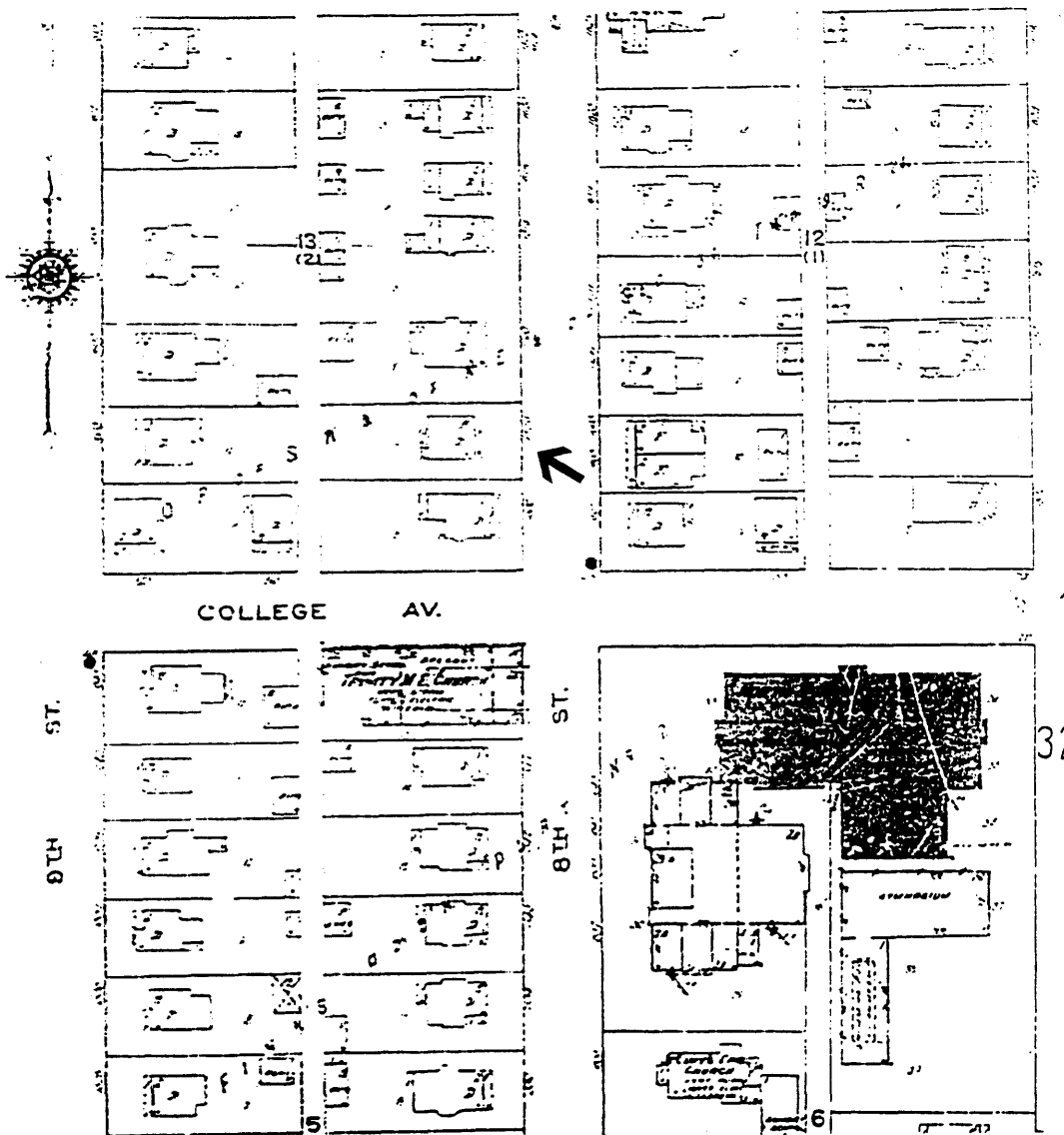
Section number 7 Page 5

CFN-259-1116

William A. and Etta Baum Cottage, Polk County, Iowa.

1920 PLAT MAP

ARROW LOCATES PROPERTY



United States Department of the Interior
National Park Service

NATIONAL REGISTER OF HISTORIC PLACES CONTINUATION SHEET

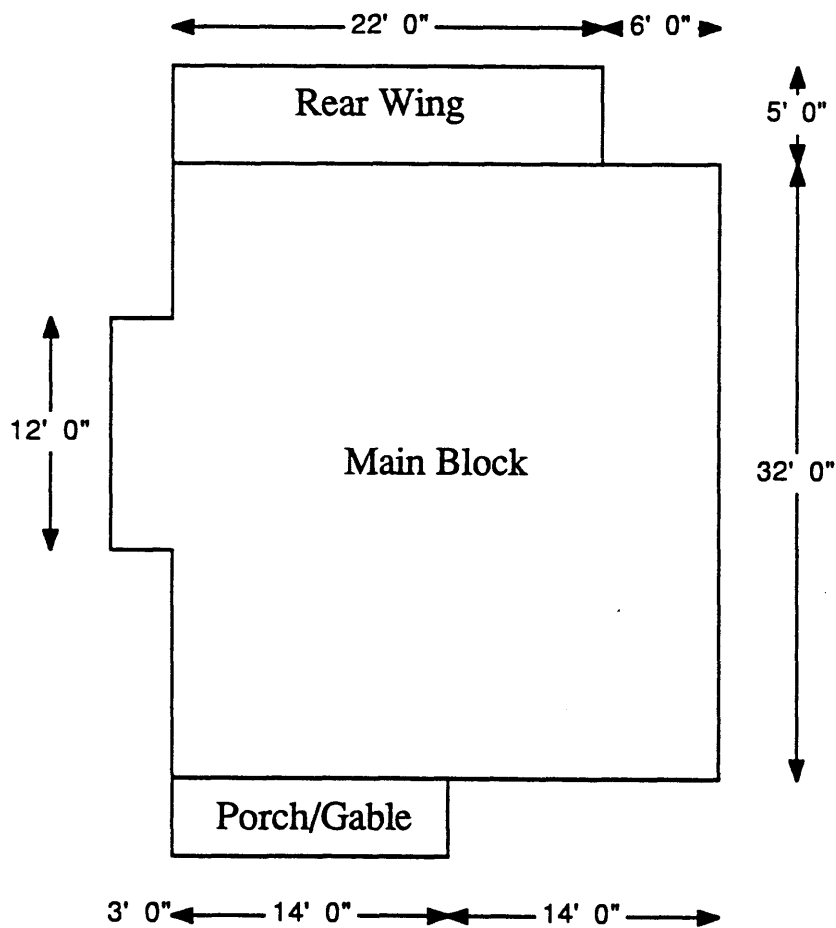
Section number 7

Page 6

CFN-259-1116

William A. and Etta Baum Cottage, Polk County, Iowa.

FOOTPRINT SKETCH PLAN



United States Department of the Interior
National Park Service

NATIONAL REGISTER OF HISTORIC PLACES CONTINUATION SHEET

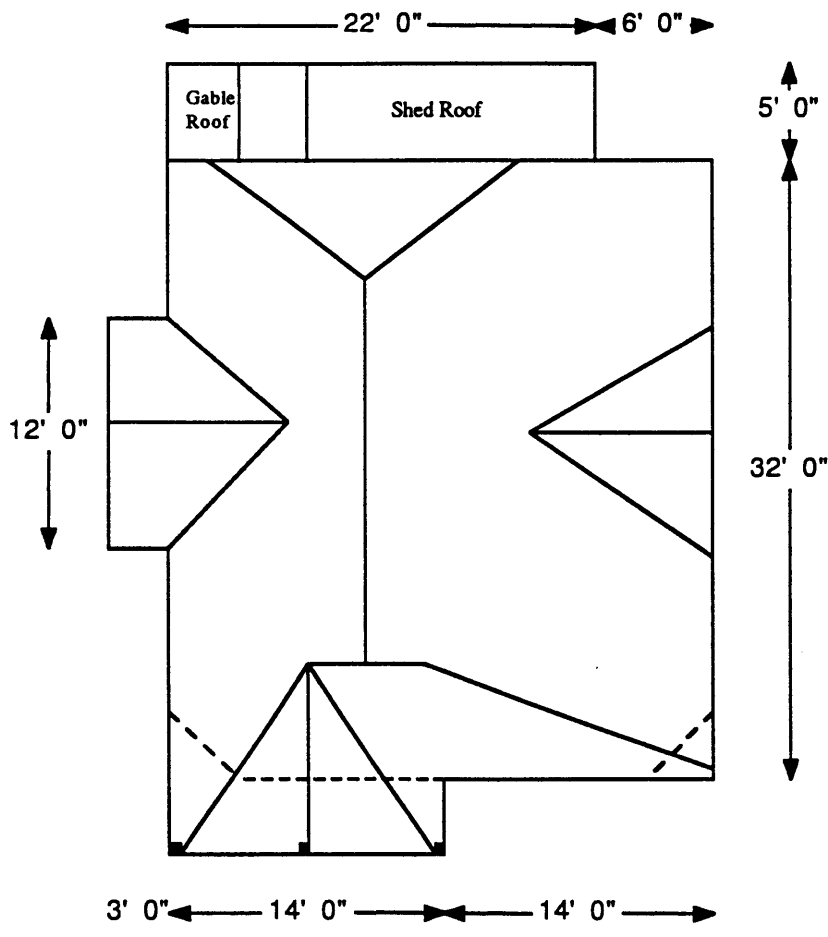
Section number 7

Page 7

CFN-259-1116

William A. and Etta Baum Cottage, Polk County, Iowa.

ROOF SKETCH PLAN



Source: Field inspection and computer drawing by William C. Page, Public Historian.

United States Department of the Interior
National Park Service

NATIONAL REGISTER OF HISTORIC PLACES CONTINUATION SHEET

Section number 8 Page 8

CFN-259-1116

William A. and Etta Baum Cottage, Polk County, Iowa.

SUMMARY OF SIGNIFICANCE

The William A. and Etta Baum Cottage is locally significant, under National Register Criterion C, as a fine example of the Queen Anne cottage, particularly the gable-on-hip subtype of that mode. The Baum Cottage is one of the handful of examples of that subtype constructed with 1-1/2 stories, two stories being much more common. The building retains a high degree of exterior integrity. Constructed in 1891, the Baum Cottage with its complex roof, canted facade, richly embellished front porch, and variety of wall surface textures provides an excellent illustration of the Queen Anne style's fascination with picturesque architectural elements and detailing.

The period of significance, under Criterion C, for this cottage is 1891, the year when it was constructed.

The property contains one resource for this nomination--the cottage.

ARCHITECTURE

Design

The Queen Anne gable-on-hip cottage is significant as a subtype because it demonstrates how a modest-sized dwelling could convey a picturesque design so admired by that mode of architecture. The Baum Cottage demonstrates that roof configuration is a critical element to that end. The employment of a gable roof--set atop the hip roof covering the main block--provides a striking visual accent to the composition. The building also features other roof details, including two intersecting gables tying into the main roof. One gable roof covers a wing on the south, while the other provides an added note of detailing on the north. (See Roof Sketch Plan on Continuation Sheet 7-7.) While such a complex roof system might seem common on a house of large scale, such complexity on a small building is unusual.

Although it is not presently known if the Baum Cottage was a professional design or the expression of a local contractor-builder, the complexity of its roof configuration suggests a professional source.

Refer to Chapter V in Section E of the Multiple Property Documentation Form for additional information about this architectural subtype.

Ownership

Although the Des Moines City Assessor Office lists "1881" as the year of construction for this building, this date appears to be incorrect. William A. Baum purchased this property from the Polk County Homestead & Trust Company in 1891 (Polk County Recorder's Office Title Transfer Book V2a). It is known that the Polk County Homestead & Trust Company acted as a land holding company but did not develop real estate. The year 1891 accurately dates the Baum Cottage's

**United States Department of the Interior
National Park Service**

**NATIONAL REGISTER OF HISTORIC PLACES
CONTINUATION SHEET**

Section number 8 Page 9

CFN-259-1116

William A. and Etta Baum Cottage, Polk County, Iowa.

construction. William A. Baum purchased the city lot on which it stands on February 24, 1891. He is also shown living at the site in the city directory for that year.

William A. Baum lived at 1604 8th Street from 1891 to 1894 (Des Moines City Directories). He is no longer listed after 1894. In 1900 William A. Baum sold this property to Mr. Chynowith (Chenowith).

By 1908, Samuel Goldberg, foreman of the Capital City Woolen Mills, was living at 1606 8th Street (City Directory). Prior to this time, Goldberg boarded at 620 East 2nd Street (City Directory 1905). Goldberg's purchase of the building provides an example of the growing Jewish presence in this neighborhood of Des Moines. Indeed, the area roughly north of University and south of College Avenues became an emergence zone of Jewish settlement during the early Twentieth Century. Jewish residential settlement was followed by a growing institutional presence in the neighborhood, including the Congregation Bethel Jacob at 5th and University Avenue and the Jewish Community Center at 801 Forest Avenue.

REPRESENTATION IN OTHER CULTURAL RESOURCES SURVEYS

This cottage was surveyed in 1994 as part of the "Towards a Greater Des Moines" reconnaissance survey of Des Moines' Victorian suburbs. As one resource within the intensive survey of the River Bend neighborhood, (another part of this project), this cottage was identified as one example of the gable-on-hip architectural subtype of the Queen Anne style as it found expression in Des Moines (Page and Walroth: I E59).

PRESENT STATUS OF PROPERTY

After standing vacant for some period of time, this resource is again in use for its original purpose as a single-family dwelling.

POTENTIAL FOR HISTORICAL ARCHAEOLOGY

The site's potential for archaeological significance is, as yet, unevaluated. Although historical archaeological investigations may uncover traces of previous construction on the site, this is unlikely. From abstract records, it appears that this was the first permanent habitation on the site.

The location of ancillary structures associated with this property, such as the stable and outbuilding shown on the 1901 Sanborn fire insurance map, or a privy associated with this cottage, might be identified and yield information.

United States Department of the Interior
National Park Service

NATIONAL REGISTER OF HISTORIC PLACES CONTINUATION SHEET

Section number 9

Page 10

CFN-259-1116

William A. and Etta Baum Cottage, Polk County, Iowa.

BIBLIOGRAPHY

Please refer to Section I of the Multiple Property Documentation Form for complete bibliography.

PRIMARY

Des Moines City Directories for 1889-1890, 1891, 1892, 1893, 1894, 1895, 1896, 1897, 1905, and 1908.

Sanborn Fire Insurance Maps for 1901 and 1920.

United States Census for 1900; Des Moines, Iowa; Ward 3, p. 73A.

Lists the following individuals living at 1606 (*sic*) 8th Street and their ages ():
William, head (37), Etta, wife (32), Berta, daughter, (11), Leander, son (9), Vernon,
son (5), and Clara M. Bertensen, servant (21).

SECONDARY

Brigham, Johnson; *Des Moines, the Pioneer of Municipal Progress and Reform of the Middle West together with the History of Polk County, Iowa, the Largest, Most Populous and Most Prosperous County in the State of Iowa*; Chicago: The S. J. Clarke Publishing Company; 1911; 2 volumes.

Des Moines City Assessor's Office, Property Record Card.

Page, William C., and Joanne R. Walroth; *Towards a Greater Des Moines: Early Suburbanization and Development, circa 1880-circa 1920*; Intensive cultural resources report prepared for and on file at the Des Moines Historic District Commission and State Historical Society of Iowa, Des Moines; 1992.

United States Department of the Interior
National Park Service

NATIONAL REGISTER OF HISTORIC PLACES
CONTINUATION SHEET

Section number 10 Page 11

CFN-259-1116

William A. and Etta Baum Cottage, Polk County, Iowa.

VERBAL BOUNDARY DESCRIPTION

Lot 7 in Block 13 of Polk County Homestead & Trust Company's Addition to the City of Des Moines, Iowa. Also known as Lot 7 in Block 13 of the Official Plat of the Southwest Quarter of the Northeast Quarter of Section 34 in Township 79 Range 24.

BOUNDARY JUSTIFICATION

Contains all land associated historically with the resource.

United States Department of the Interior
National Park Service

NATIONAL REGISTER OF HISTORIC PLACES CONTINUATION SHEET

Section number 10 Page 12

CFN-259-1116

William A. and Etta Baum Cottage, Polk County, Iowa.

LIST OF PHOTOGRAPHS

1. William A. and Etta Baum Cottage
1604 8th Street
Des Moines, IA 50314
Looking northwest
William C. Page, Photographer
August 16, 1995

2. William A. and Etta Baum Cottage
1604 8th Street
Des Moines, IA 50314
Looking west
William C. Page, Photographer
August 16, 1995

3. William A. and Etta Baum Cottage
1604 8th Street
Des Moines, IA 50314
Looking southwest
William C. Page, Photographer
August 16, 1995