



David McEwen House(WM-70), east of Franklin Rd

Williamson County Multiple Resource Area

Williamson County, TN

Date: July, 1987

Photo by: Thomason and Associates

Neg: TN Historical Commission

Nashville, TN

View: North, of south(main) facade

Photo #: 1 of 7



David McEwen House (WM-70)-east of FranklinRd
Williamson County Multiple Resource Area
Williamson County, TN

Date: July, 1987

Photo by: Thomason and Associates .

Neg: TN Historical Commission
Nashville, TN

View: Northwest, of south and east facades

Photo #: 2 of 7



David McEwen House (WM-70)-east of Franklin Rd
Williamson County Multiple Resource Area
Williamson County, TN

Date: July, 1987

Photo by: Thomason and Associates

Neg: TN Historical Commission
Nashville, TN

View: Southeast of north facade

Photo#: 3 of 7



David McEwen House (WM-70)-east of Franklin RD
Williamson County Multiple Resource Area
Williamson County, TN

Date: July, 1987

Photo by: Thomason and Associates

Neg: TN Historical Commission
Nashville, TN

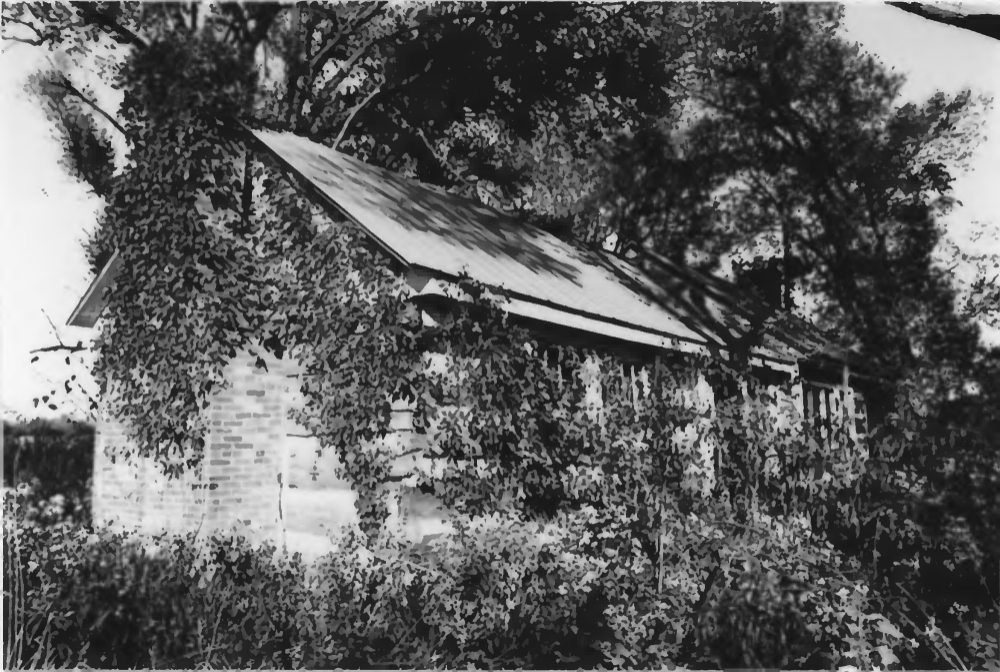
View: South, of north facade

Photo #: 4 of 7



David McEwen House (WM-70)-east of Franklin Rc
Williamson County Multiple Resource Area
Williamson County, TN
Date: July, 1987
Photo by: Thomason and Associates
Neg: TN Historical Commission
Nashville, TN
View: South, of north facade

Photo #: 5 of 7



David McEwen House (WM-70)-east of Franklin Rc
Williamson County Multiple Resource Area

Williamson County, TN

Date: July, 1987

Photo by: Thomason and Associates

Neg: TN Historical Commission

Nashville, TN

View: Northeast, of west facade

Photo #: 6 of 7



David McEwen House (WM-70). east of Franklin Rd
Williamson County Multiple Resource Area
Williamson County, TN
Date: July, 1987
Photo by: Thomason and Associates
Neg: TN Historical Commission
Nashville, TN
View: Interior view of mantle in east pen
Photo #: 7 of 7