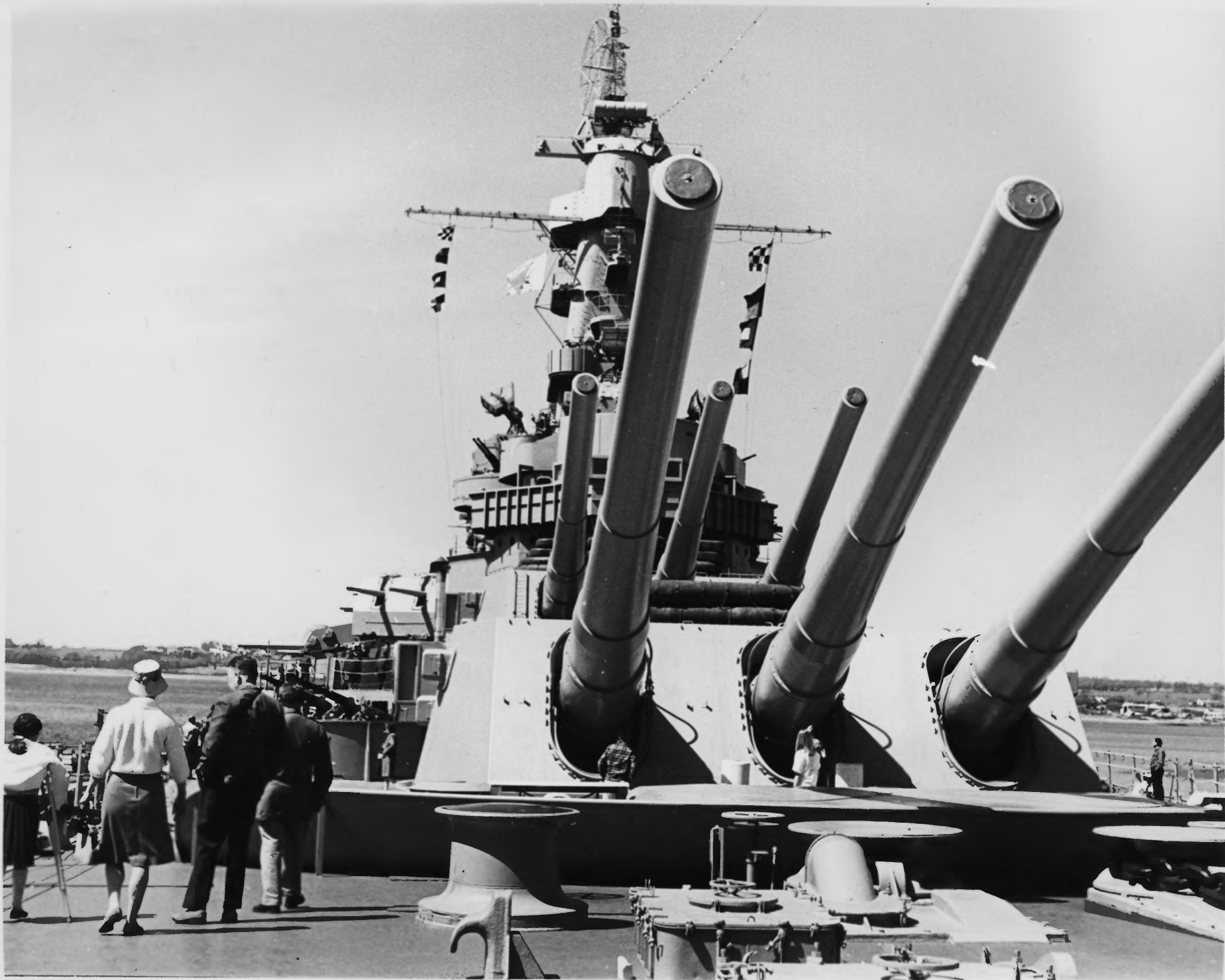




1. USS Massachusetts
2. Fall River, Massachusetts
3. USS Massachusetts Memorial Committee
4. Late 1970s
5. USS Massachusetts Memorial Committee
6. Exterior Side View
7. Photo #1



1. USS Massachusetts
2. Fall River, Massachusetts
3. US Navy
4. 1942
5. USS Massachusetts Memorial Committee
6. Exterior Side View
7. Photo #2



1. USS Massachusetts
2. Fall River, Massachusetts
3. Martin R. Adler
4. 1984
5. USS Massachusetts Memorial Committee
6. Main Battery and Superstructure from Bow
7. Photo #3

**MAIN BATTERY PLOTTING ROOM**  
IN THIS ROOM THE MAIN BATTERY TARGETS ARE CONTROLLED BY THE  
ACCOMMODATION OFFICER OR THE MAIN BATTERY DIRECTOR...  
SOME REGULATIONS... AND A MASTER... THE MAIN BATTERY  
ELEMENTS IN THE PLOTTING ROOM...  
THE MAIN BATTERY BUNKERS CAN ALSO BE CONTROLLED  
FROM THE MARK 35 GYRO DIRECTOR...  
ONE ON TOP OF THE SUPER-STRUCTURE  
AND ONE JUST FORWARD OF TURRET 3...  
OR BY SAILORS IN THE TURRETS THEMSELVES

**MARK 41**  
**(CAL)**

...ATE AND  
...IN ORDER TO  
...ROSS-LEAF  
...AND  
...THE  
...MERCURY  
...MOVEMENT  
...LEVEL (F...  
...OF THE  
...AIN A TRUE  
...STARBOARD), AND  
...THE COMPUTED ANGLES  
...KEEPER. A GYROSCOPE  
...SHIP. WAS THE HEAR... OF THE  
...PROVIDED WITH INFORMATION  
...COURSE-LEVEL,  
...COURSE AND TARGET  
...PROVIDE  
...ANGLES  
...ARE VISIBLE

1. USS Massachusetts
2. Fall River, Massachusetts
3. USS Massachusetts Memorial Committee
4. 1984
5. USS Massachusetts Memorial Committee
6. Main Battery Plot
7. Photo #4



## 40MM HEAVY MACHINE GUN

THE 40MM IS A WATER-COOLED HAND-FED, RECOIL-OPERATED HEAVY MACHINE GUN DESIGNED FOR USE AGAINST AIRCRAFT. THE AMMUNITION IS LOADED IN CLIPS OF FOUR ROUNDS EACH. EACH OF THE CARTRIDGES WEIGHS 48 LBS. AND THE PROJECTILE ITSELF WEIGHS JUST UNDER TWO POUNDS. MUZZLE VELOCITY WAS 2800 FEET PER SECOND (1900 MPH). THE GUN HAD A MAXIMUM HORIZONTAL RANGE OF 8.25 MILES BUT, UNLESS THE PROJECTILE HIT THE TARGET, IT WOULD NORMALLY SELF-DESTRUCT AT ABOUT 2.5 MILES. IT HAS A NOMINAL RATE OF FIRE OF 120 ROUNDS PER MINUTE.

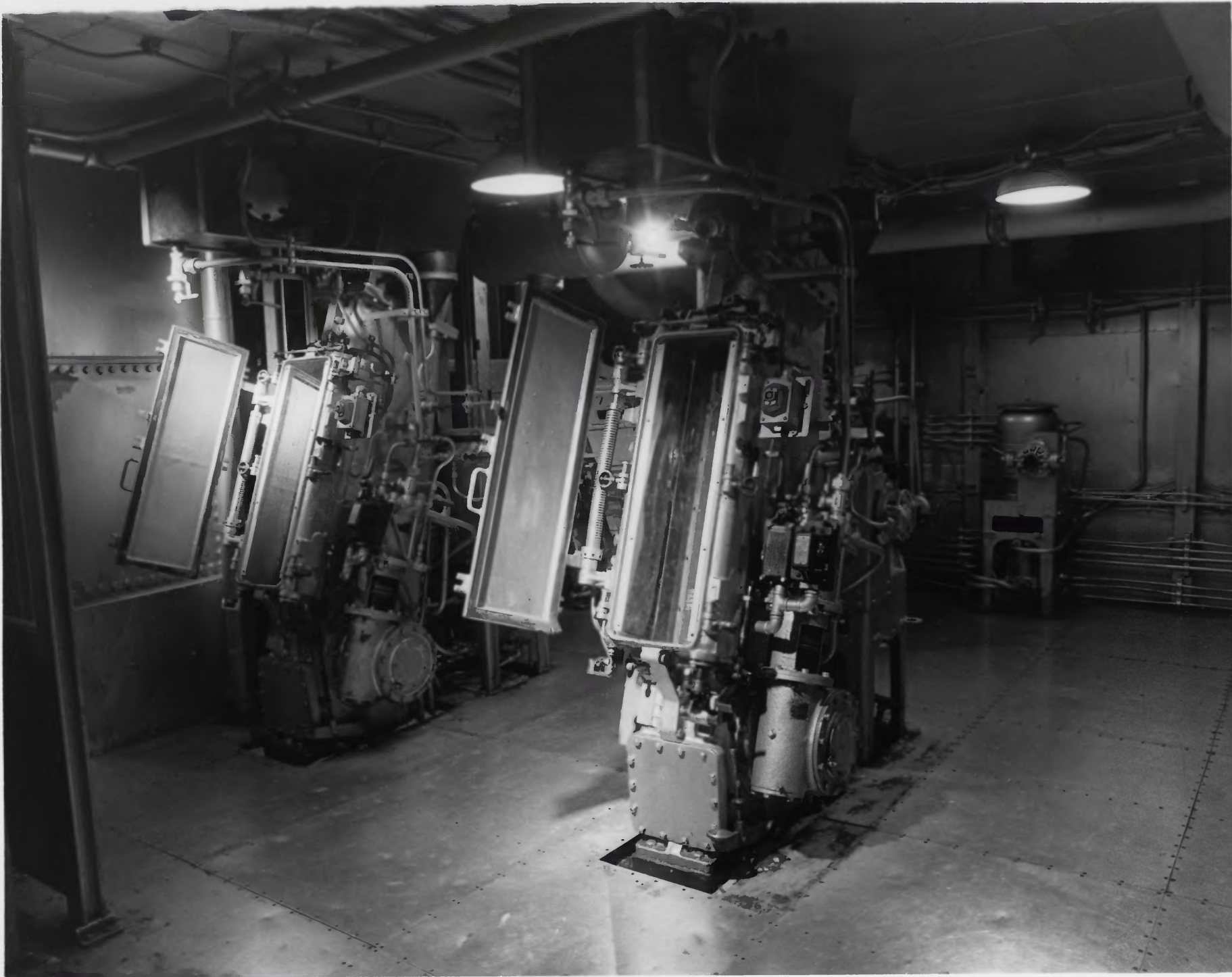
## SECONDARY BATTERY PLOTTING ROOM

THIS ROOM ORIGINALLY CONTAINED FIRE CONTROL INSTRUMENTS SIMILAR TO THOSE IN MAIN BATTERY PLOT, FOR THE SHIP'S SECONDARY BATTERY OF 20 5" GUNS. THE INSTRUMENTS WERE REMOVED FOR USE ON ACTIVE VESSELS AFTER THE MASSACHUSETTS WENT INTO MOTHBALLS.

## 16" PROJECTILE BAGS FOR MAIN

THIS 16" PRACTICE PROJECTILE AS AN ACTUAL CHARGE WOULD PENETRATE INTO THE BREACH OF THE 8" ARMOR-PIERCING PROJ. WHICH WEIGHS 2700 LBS. DEFENSIVE PIONEER BAG WEIGHS 90 LBS. MUZZLE VELOCITY WAS 2800 FT. PER SEC. CHAMBER PRESSURE WAS 18 TONS PER SQUARE INCH. GOOD DAY WITH LIGHT PROJECTILES COULD BE IN FLIGHT TIME OF 10 SECONDS. RANGE SPEED OF

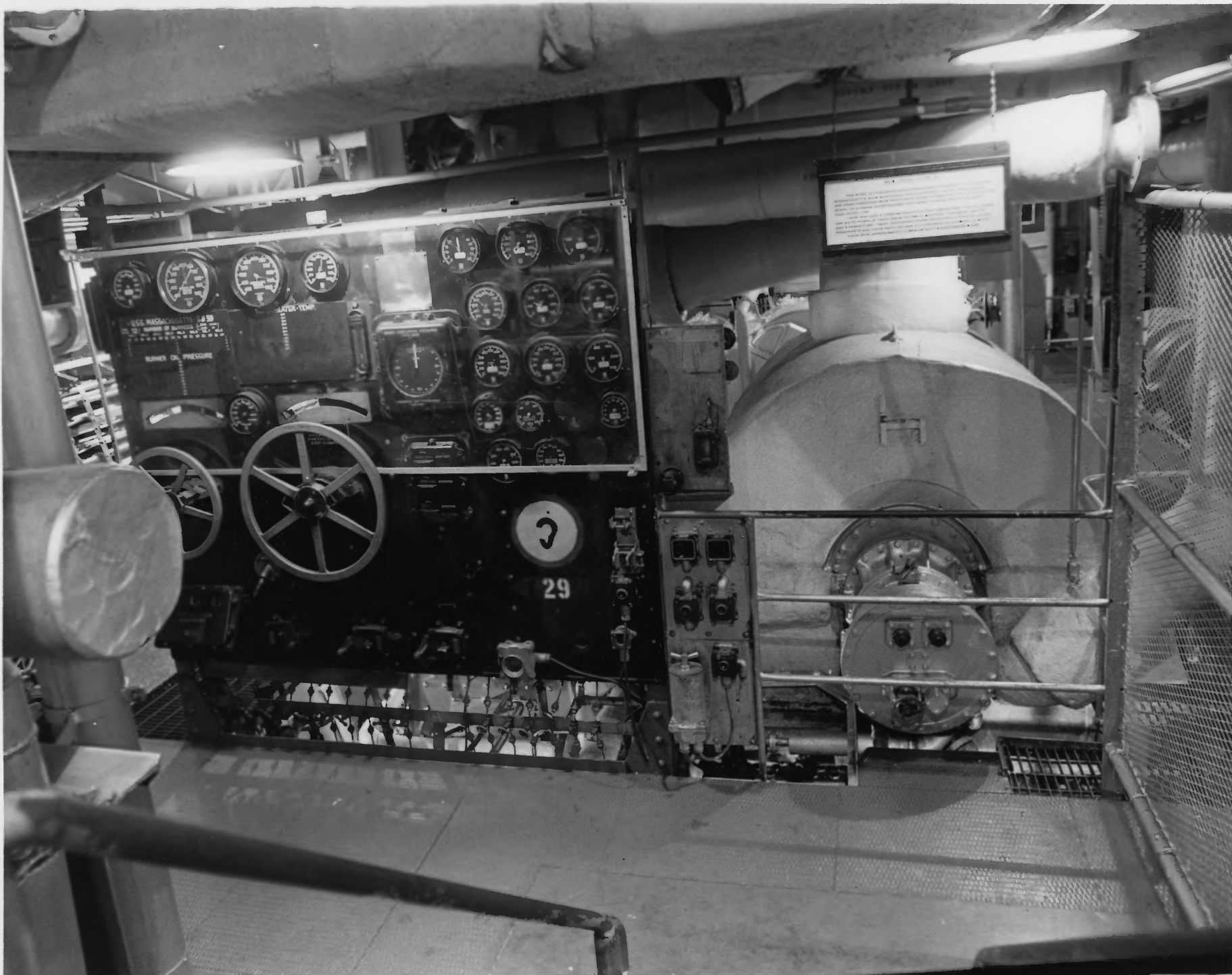
1. USS Massachusetts
2. Fall River, Massachusetts
3. USS Massachusetts Memorial Committee
4. 1984
5. USS Massachusetts Memorial Committee
6. Ordnance exhibit in secondary battery plot
7. Photo #5



1. USS Massachusetts
2. Fall River, Massachusetts
3. USS Massachusetts Memorial Committee
4. 1984
5. USS Massachusetts Memorial Committee
6. 5" ammunition handling room
7. Photo #6

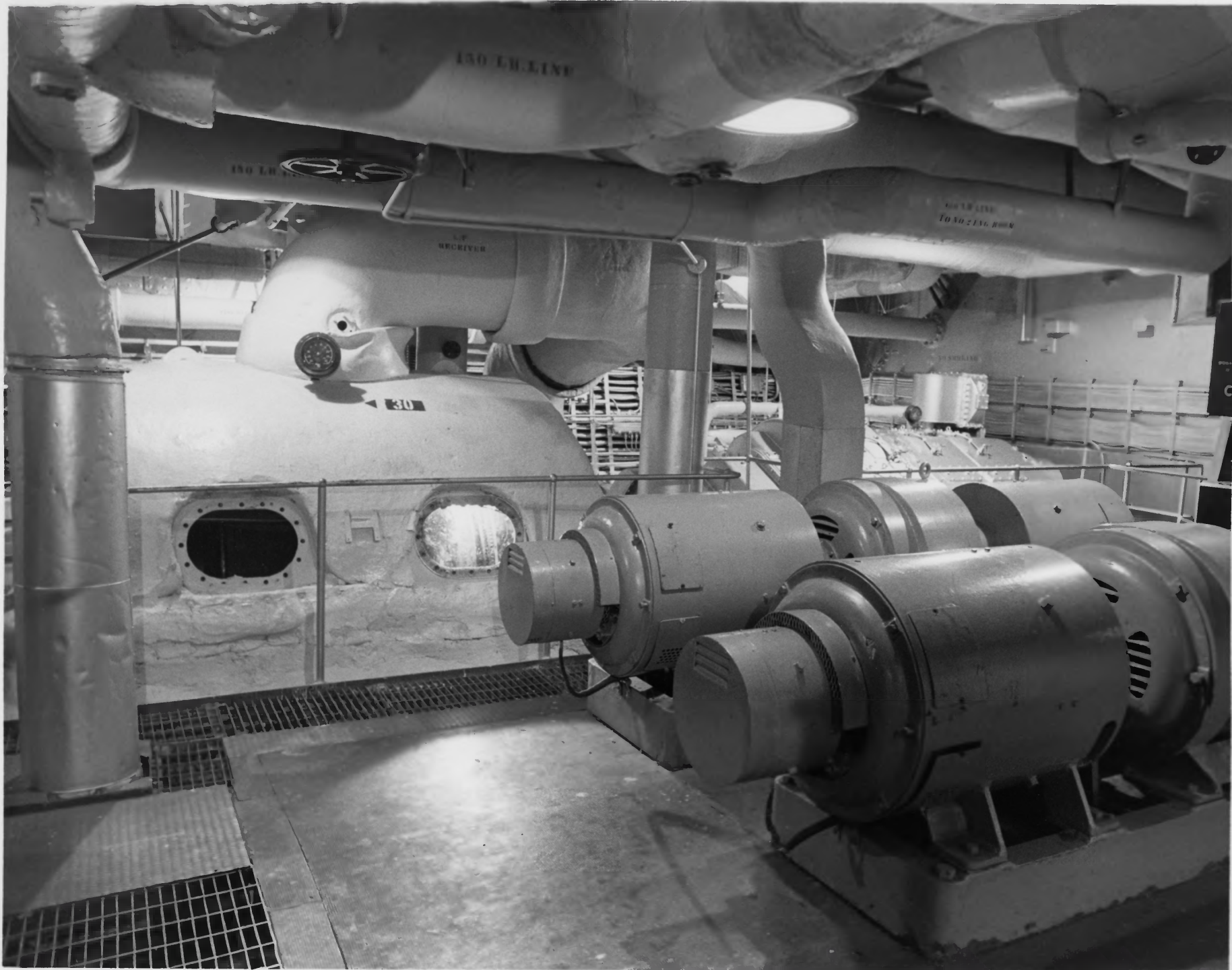


1. USS Massachusetts
2. Fall River, Massachusetts
3. USS Massachusetts Memorial Committee
4. 1984
5. USS Massachusetts Memorial Committee
6. Berthing in Chief Petty Officer's Quarters
7. Photo #7



1. USS Massachusetts
2. Fall River, Massachusetts
3. USS Massachusetts Memorial Committee
4. 1984
5. USS Massachusetts Memorial Committee
6. Entrance to engine room B-1
7. Photo #8





1. USS Massachusetts
2. Fall River, Massachusetts
3. USS Massachusetts Memorial Committee
4. 1984
5. USS Massachusetts Memorial Committee
6. Turbines and electric generators in Engine Room B-1
7. Photo #9



1. USS Massachusetts
2. Fall River, Massachusetts
3. USS Massachusetts Memorial Committee
4. 1984
5. USS Massachusetts Memorial Committee
6. Machine Shop
7. Photo #10